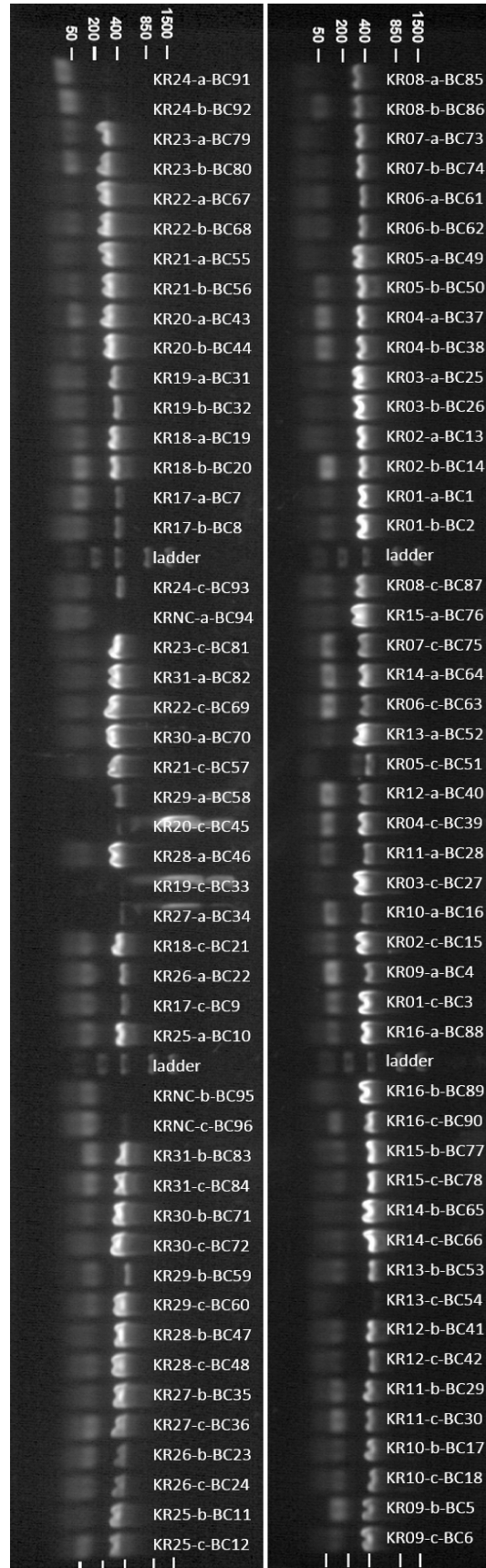


S 2. Gel electrophoresis images. This images contains the information on amplification of all 62 amplicon libraries, of all three technical replicates, for ITS2 and the negative controls (also in triplicate), including DNA extraction negative and PCR negative. The gel image was acquired and analyzed using the ChemiDoc™ Touch Imaging System with Image Lab™ Touch Software, version 6.0.0 (Bio-Rad).



KR18-48-a	KR18-32-a
KR18-48-b	KR18-32-b
KR18-49-a	KR18-33-a
KR18-49-b	KR18-33-b
KR18-50-a	KR18-34-a
KR18-50-b	KR18-34-b
KR18-51-a	KR18-35-a
KR18-51-b	KR18-35-b
KR18-52-a	KR18-36-a
KR18-52-b	KR18-36-b
KR18-53-a	KR18-37-a
KR18-53-b	KR18-37-b
KR18-54-a	KR18-38-a
KR18-54-b	KR18-38-b
KR18-55-a	KR18-39-a
KR18-55-b	KR18-39-b
ladder	ladder
KR18-48-c	KR18-32-c
KR18-56-a	KR18-40-a
KR18-49-c	KR18-33-c
KR18-57-a	KR18-41-a
KR18-50-c	KR18-34-c
KR18-58-a	KR18-42-a
KR18-51-c	KR18-35-c
KR18-59-a	KR18-43-a
KR18-52-c	KR18-36-c
KR18-60-a	KR18-44-a
KR18-53-c	KR18-37-c
KR18-61-a	KR18-45-a
KR18-54-c	KR18-38-c
KR18-62-a	KR18-46-a
KR18-55-c	KR18-39-c
Ex.Neg-a	KR18-47-a
ladder	ladder
KR18-56-b	KR18-40-b
KR18-56-c	KR18-40-c
KR18-57-b	KR18-41-b
KR18-57-c	KR18-41-c
KR18-58-b	KR18-42-b
KR18-58-c	KR18-42-c
KR18-59-b	KR18-43-b
KR18-59-c	KR18-43-c
KR18-60-b	KR18-44-b
KR18-60-c	KR18-44-c
KR18-61-b	KR18-45-b
KR18-61-c	KR18-45-c
KR18-62-b	KR18-46-b
KR18-62-c	KR18-46-c
Ex.Neg-b	KR18-47-b