

Supplementary Material

Table S1. CTC counts of 20 GBM patients (before and after surgery)

	CTC (spiral/ml of blood)	Marker	Collection	CTC (spiral/ml of blood)	Marker	Collection
	Before surgery			After surgery		
1	1	GFAP*	2 days before surgery	2	GFAP	5 days after surgery
2	1	GFAP	3 days before surgery	3	GFAP	4 days after surgery
3	1	GFAP	Same day	0	-	3 days after surgery
4	0	-	1 day before surgery	0	-	3 days after surgery
5	17 [#]	GFAP CSV	Same day	3 [#]	GFAP CSV*	9 days after surgery
6	5	GFAP*	1 day before surgery	5	GFAP	2 days after surgery
7	0	-	Same day	0	-	3 days after surgery
8	1	GFAP	1 day before surgery	0	-	3 days after surgery
9	0	-	3 days before surgery	2	GFAP	10 days after surgery
10	3	GFAP	1 day before surgery	2	GFAP	7 days after surgery
11	0	-	Same day	3	GFAP	5 days after surgery

12	0	-	Same day	1	GFAP CSV	6 days after surgery
13	0	-	1 day before surgery	0	-	5 days after surgery
14	0	-	1 day before surgery	1	CSV	6 days after surgery
15	24 [#]	GFAP	Same day	3	GFAP CSV	2 days after surgery
16	0	-	3 days before surgery	0	-	4 days after surgery
17	0	-	Same day	N/A	-	-
18	0	-	Same day	0	-	3 days after surgery
19	2	GFAP CSV	Same day	1	GFAP	5 days after surgery
20	0	-	Same day	0	-	5 days after surgery

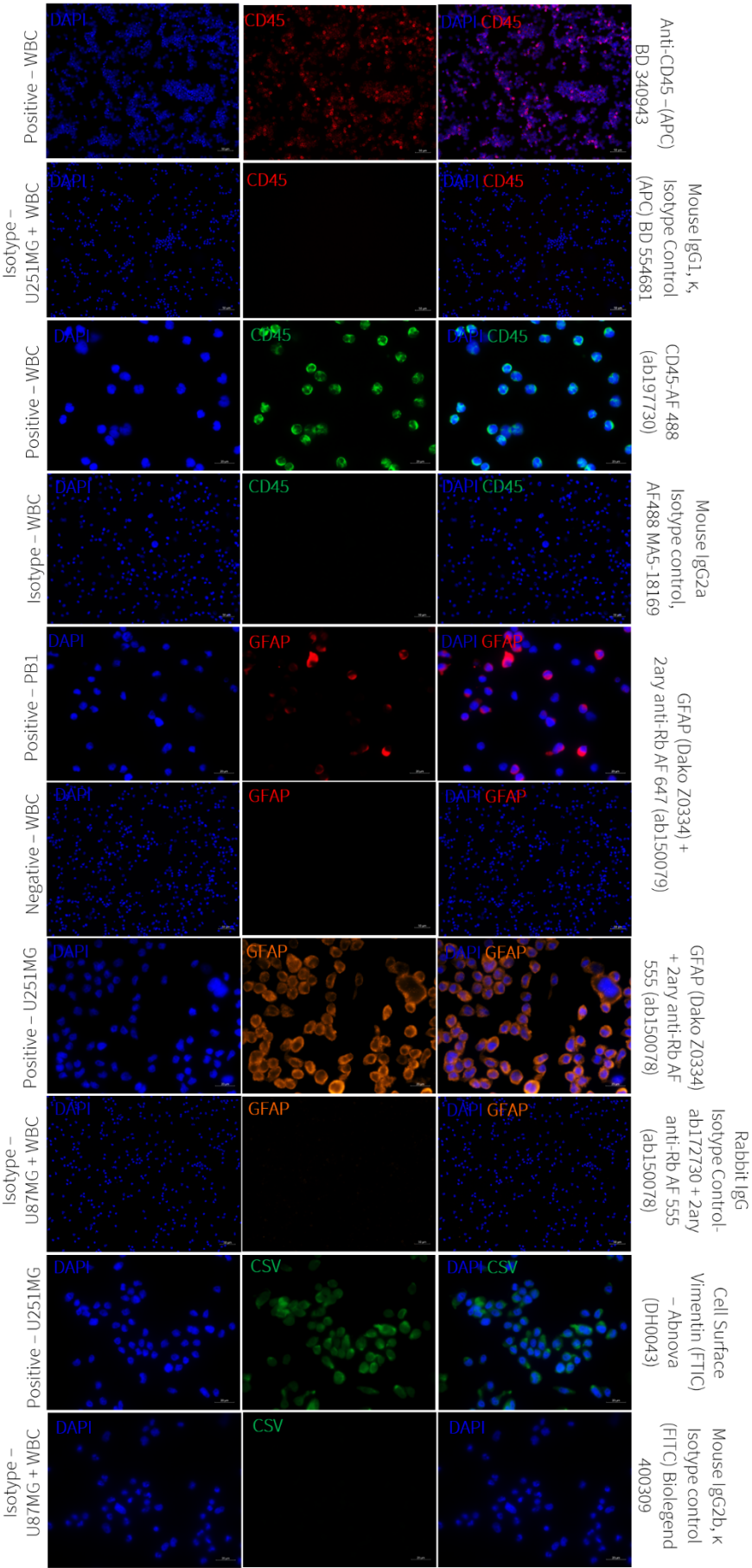
* = EGFR amplified; N/A = not available; [#] = cluster found

Table S2. Antibodies used and staining conditions

Primary antibody	Dilution and incubation time	Secondary antibody	Concentration and incubation time	Isotype Control (same concentration and incubation time)
Anti-Glial Fibrillary Acidic Protein (GFAP) unconjugated. Dako –Z0334	1:500 3 h - RT	Goat Anti-Rabbit IgG (Alexa Fluor 647) Abcam – ab150079 or Goat Anti-Rabbit IgG (Alexa Fluor	1:1000 1 h -RT Or	Rabbit IgG Isotype Control Abcam - ab172730

		555) Abcam – ab ab150078)	1:2000 1 h -RT	
Anti-CD45 (Alexa Fluor 488) Abcam – ab197730	1:200 1:30h - RT	-	-	Mouse IgG2a Isotype control (PPV-04), Alexa Fluor 488 Thermo Fischer Scientific – MA5-18169
Anti-CD45 – (APC) BD 340943	1:50 1h - RT	-		Mouse IgG1, κ , Isotype Control (APC) BD 554681
Cell Surface Vimentin (FTIC) - Abnova DH0043	1:150 1h - RT	-		Mouse IgG2b, κ Isotype control (FITC) Biolegend 400309

A)



B)

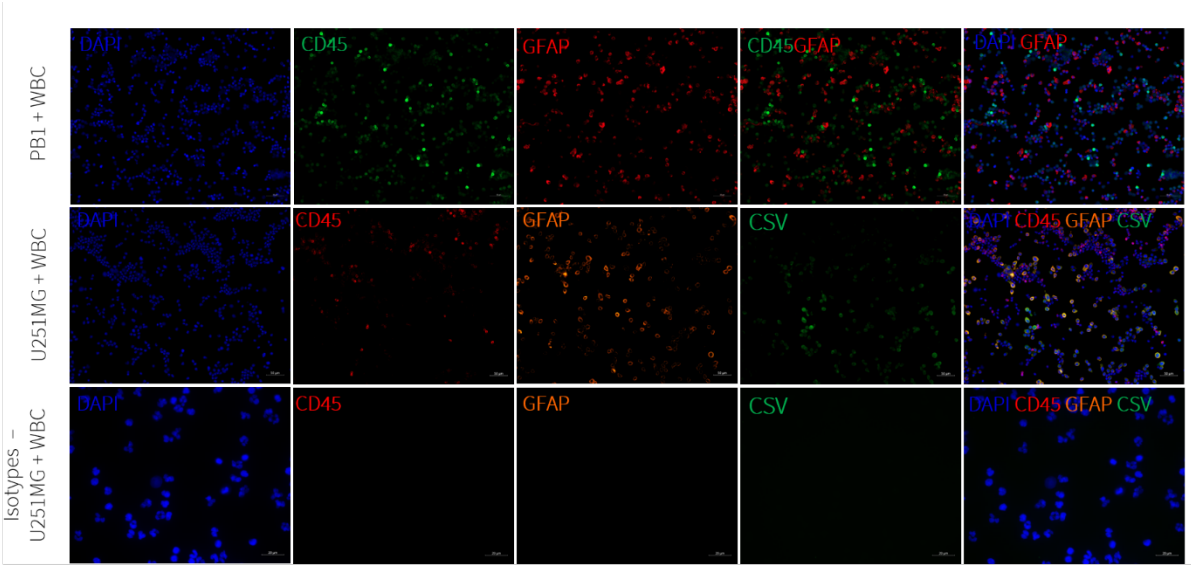


Figure S1. Validation panel of antibody. A panel of representative images consisting of negative and positive controls for all antibodies used in this study individually (A) and in combination (B).