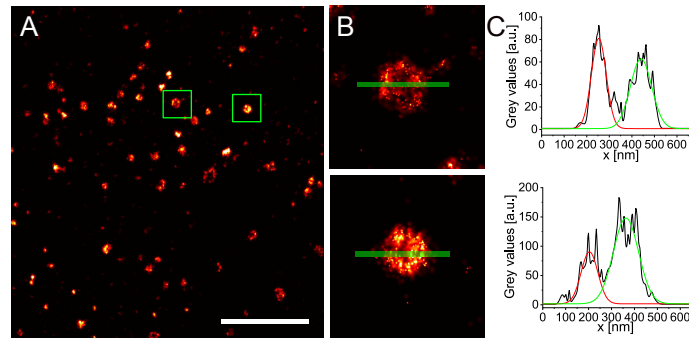


---

# Supplementary Material

## 1 SUPPLEMENTARY FIGURES



**Figure S1. Clathrin-coated pit size** (A) HeLa cells with stable expression of CLC-GFP were stained with anti-GFP nanobody labeled with Alexa Fluor 647, and *(d)*STORM images were taken. The scale bar is 3  $\mu\text{m}$ . (B) Zoom-in on two individual clathrin-coated pits in (A) and line profiles were taken. The size of the image is 1  $\mu\text{m}$  x 1  $\mu\text{m}$ . (C) Fitting the line profiles with two Gaussians results in a diameter of  $126 \pm 24$  nm (mean  $\pm$  standard deviation,  $N = 9$ ).