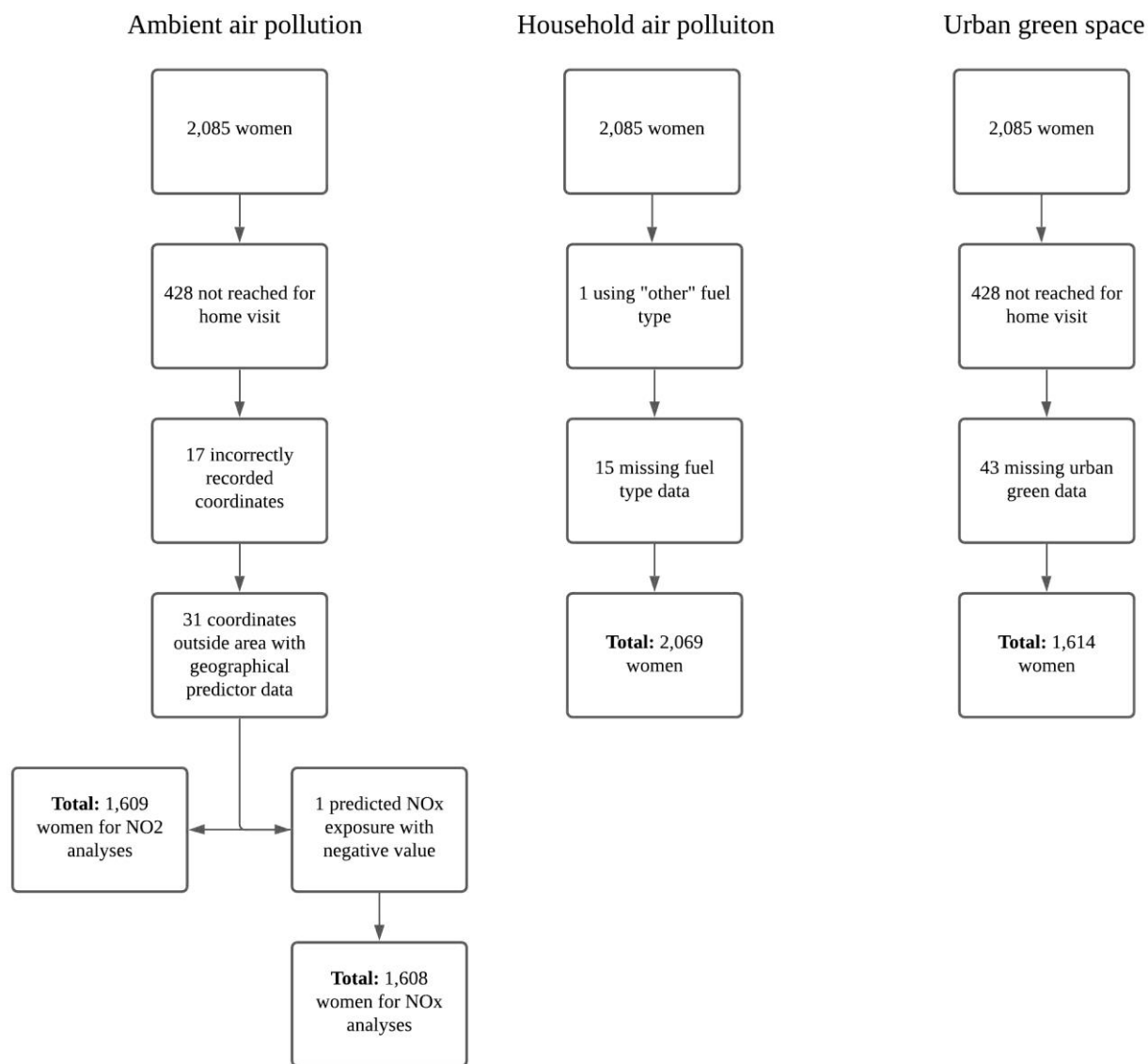


Supplementary Material

Study population flowchart: Environmental exposures



Supplementary Figure 1. Flowchart of the study population according to available data on environmental exposures.

Supplementary Table 1. Sensitivity analysis excluding women whose coordinates were recorded as “degree, minute, and second” (n = 238) for exploring the odds of being exposed to levels of NO₂ and NO_x above the mean (13.70 and 29.89 µg/m³, respectively) associated with education level and occupation among women in the Adama Mother and Child cohort.

	OR (95% CI)	
	NO₂	NO_x
Education level	N = 1,368	N = 1,367
Illiterate and < Grade 6	1.67 (1.12-2.49)*	2.08 (1.39-3.12)**
Grades 6-12	1.59 (1.08-2.32)*	1.72 (1.17-2.53)**
> Grade 12	REF	REF
Education level^a	N = 1,368	N = 1,367
Low	1.13 (0.90-1.42)	1.31 (1.04-1.65)*
High	REF	REF
Occupation	N = 470	N = 469
Daily laborer	1.17 (0.80-1.70)	1.16 (0.80-1.68)
Permanent employment	REF	REF

Number of included participants (N) is presented.

OR, Odds ratio. CI, Confidence interval. ^aLow = Illiterate and < Grade 6, High = Grades 6-12 and > Grade 12. REF, reference category. * $p \leq 0.05$. ** $p \leq 0.01$.

Supplementary Table 2. Sensitivity analysis excluding women whose coordinates were recorded as “degree, minute, and second” (n = 238) for exploring the odds of being exposed to levels of NO₂ and NO_x above 20 µg/m³ associated with education level and occupation among women in the Adama Mother and Child cohort.

	OR (95% CI)	
	NO₂	NO_x
Education level	N = 1,368	N = 1,367
Illiterate and < Grade 6	5.33 (2.41-11.77)**	1.31 (0.76-2.26)
Grades 6-12	4.16 (1.90-9.08)**	1.63 (0.97-2.75)
> Grade 12	REF	REF
Education level^a	N = 1,368	N = 1,367
Low	1.48 (1.11-1.98)**	0.88 (0.61-1.26)
High	REF	REF
Occupation	N = 470	N = 469
Daily laborer	1.64 (0.98-2.74)	1.23 (0.62-2.47)
Permanent employment	REF	REF

Number of included participants (N) is presented.

OR, Odds ratio. CI, Confidence interval. ^aLow = Illiterate and < Grade 6, High = Grades 6-12 and > Grade 12. REF, reference category. **p* ≤ 0.05. ***p* ≤ 0.01.

Supplementary Table 3. Socioeconomic characteristics of the women who were reached for a home visit and those who were not (N = 428).

	Reached for home visit, n (%)	
	Yes	No
Education level		
Illiterate	195 (11.8)	71 (16.7)
< Grade 6	326 (19.7)	84 (19.7)
Grades 6-12	939 (56.8)	233 (54.7)
> Grade 12	193 (11.7)	38 (8.9)
Occupation		
Daily laborer	198 (12.0)	50 (11.8)
Permanent employment	236 (14.3)	38 (8.9)
Self-employed	124 (7.5)	39 (9.2)
Homemaker	1,041 (63.1)	278 (65.4)
Student	29 (1.8)	13 (3.1)
Unemployed	22 (1.3)	7 (1.6)

Supplementary Table 4. Socioeconomic characteristics of the women with missing data on the presence of green space, including those not reached for a home visit, in their residential area (N = 471).

	Presence of green space, n (%)		
	Yes	No	Missing
Education level			
Illiterate	93 (35.0)	95 (35.7)	78 (29.3)
< Grade 6	165 (40.2)	155 (37.8)	90 (22.0)
Grades 6-12	543 (46.3)	370 (31.6)	259 (22.1)
> Grade 12	142 (61.5)	47 (20.3)	42 (18.2)
Occupation			
Daily laborer	76 (30.6)	113 (45.6)	59 (23.8)
Permanent employment	153 (55.8)	77 (28.1)	44 (16.1)
Self-employed	59 (36.2)	62 (38.0)	42 (25.8)
Homemaker	619 (46.9)	398 (30.2)	302 (22.9)
Student	22 (52.4)	6 (14.3)	14 (33.3)
Unemployed	13 (44.8)	9 (31.0)	7 (24.1)