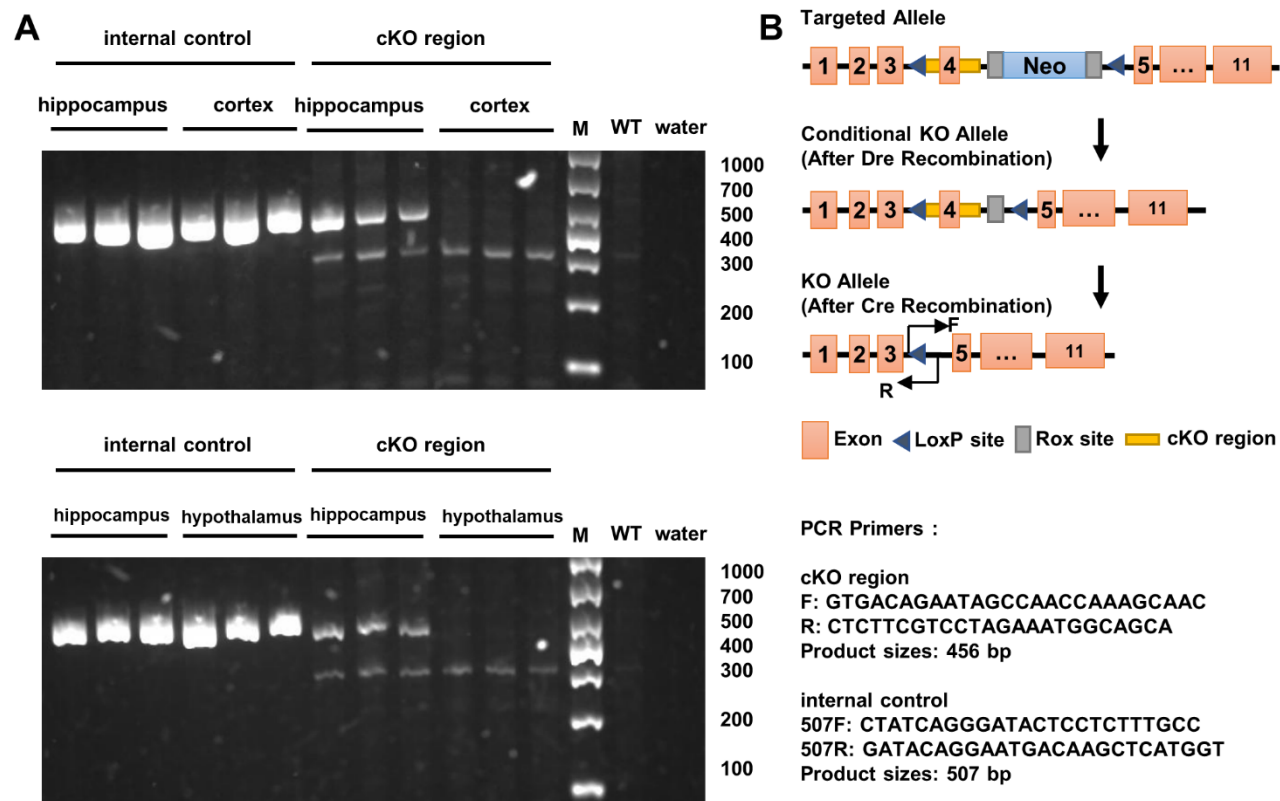
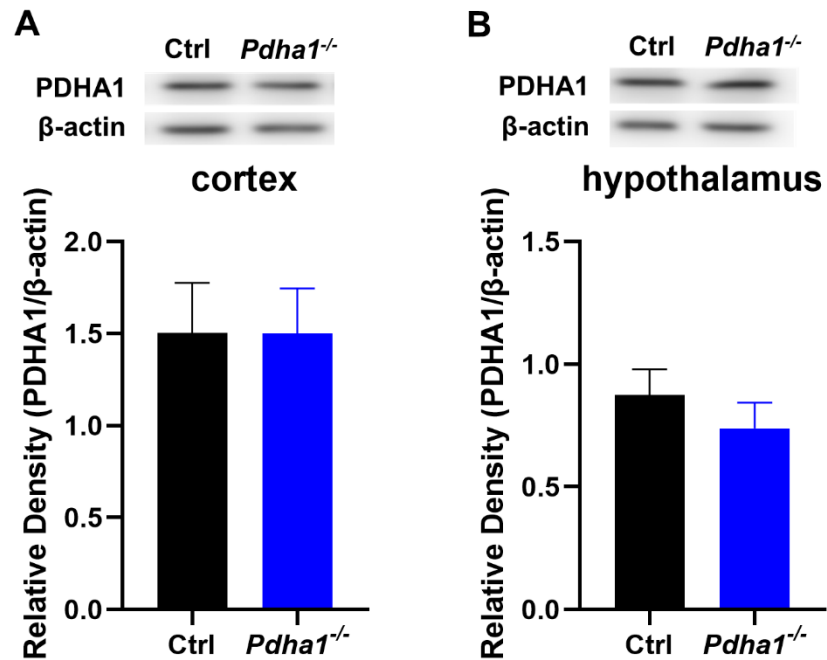


## Supplementary Material

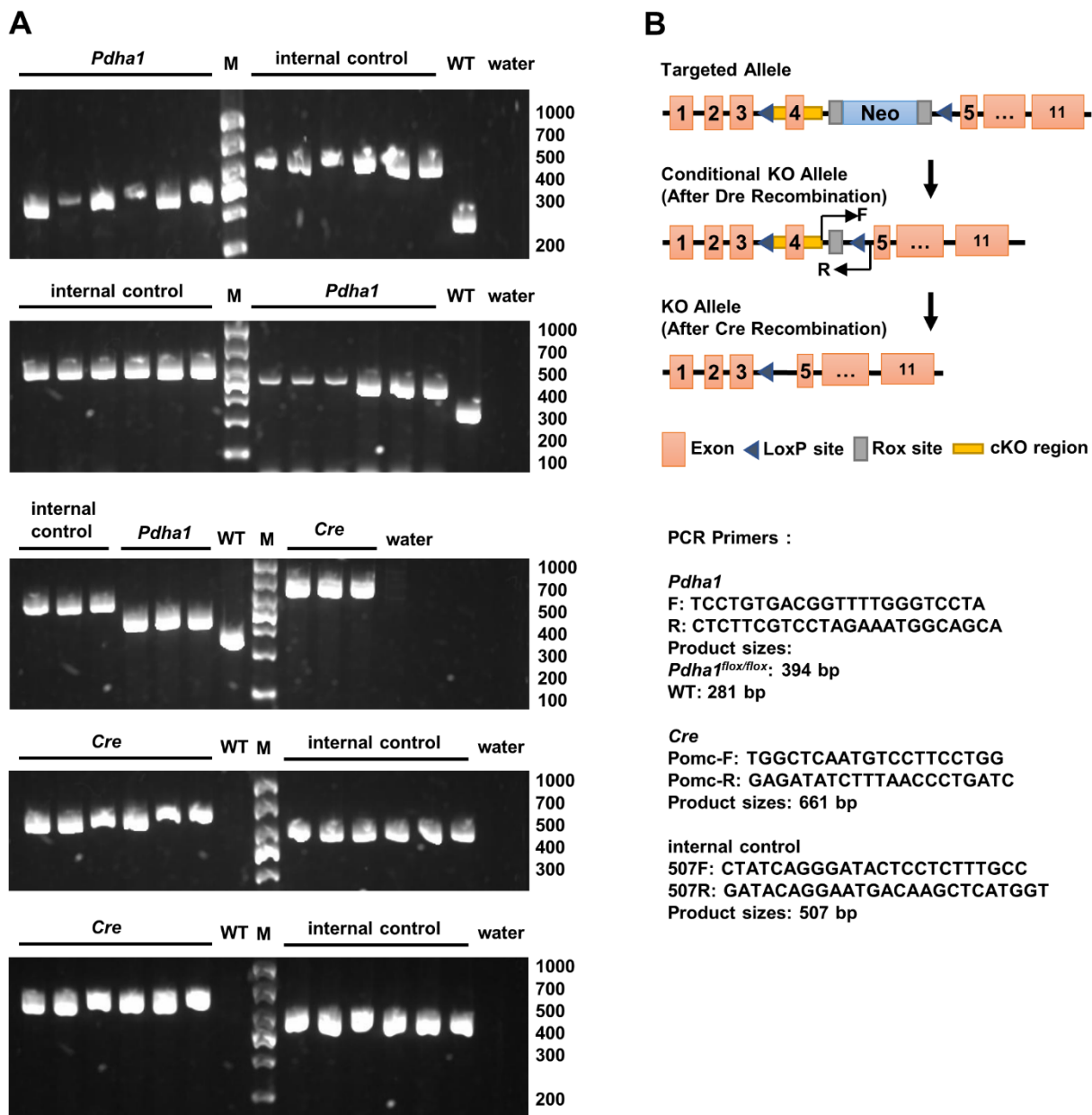
### 1 Supplementary Figures



**Supplementary Figure 1. *Pdh1l* knockout occurred in the hippocampus rather than in the cortex and hypothalamus. (A)** Genotyping of *Pdh1l*<sup>-/-</sup> mice by PCR analysis. The target bands appeared at 456 bp only in the hippocampus ( $n = 3$ ). **(B)** The information of PCR primers.



**Supplementary Figure 2. There was no change in the expression of PDHA1 protein in cortex and hypothalamus of *Pdha1*<sup>-/-</sup> mice. (A)** Representative immunoblots of PDHA1 protein and quantification of PDHA1 protein levels in the cortex of *Pdha1*<sup>-/-</sup> mice and control mice ( $n = 4$ ). **(B)** Representative immunoblots of PDHA1 protein and quantification of PDHA1 protein levels in the hypothalamus of *Pdha1*<sup>-/-</sup> mice and control mice ( $n = 4$ ). All data are expressed as means  $\pm$  SEM.



**Supplementary Figure 3. The genotyping results of all *Pdha1*<sup>-/-</sup> mice. (A) Genotyping of *Pdha1*<sup>-/-</sup> mice by PCR analysis ( $n = 15$ ). (B) The information of PCR primers.**