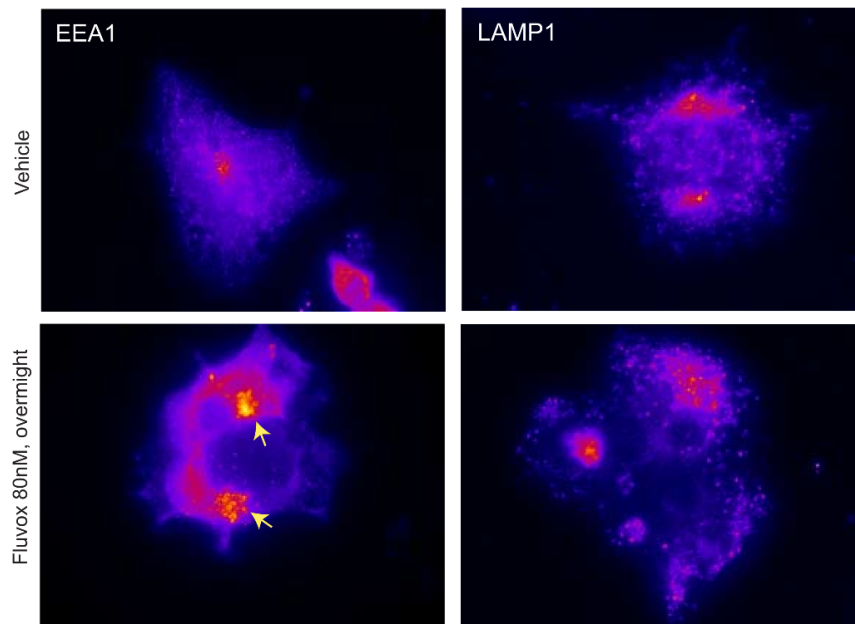
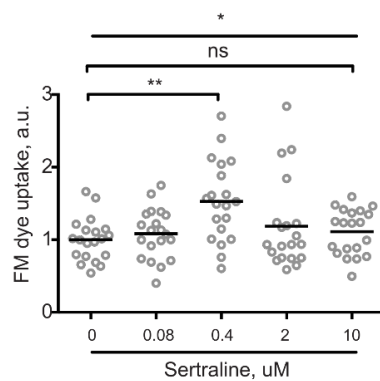


Figure S1

a



b



c

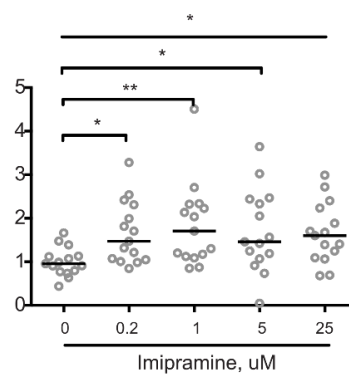


Figure S1. Supplementary data. **a**, HEK293T cells were treated with vehicle or 80 nM fluvoxamine overnight and immunostained for EEA1 or LAMP1. Arrows denote enlarged early endosomes following fluvoxamine treatment. **b**, Quantification of FM dye uptake experiments for various concentrations of sertraline. * $P < 0.05$, Kruskal-Wallis test. ** $P < 0.01$, Dunn's multiple comparisons test. **c**, Quantification of FM dye uptake experiments for various concentrations of imipramine. * $P < 0.05$, Kruskal-Wallis test. * $P < 0.05$, ** $P < 0.01$, Dunn's multiple comparisons test. Scale bar, 20 μ m