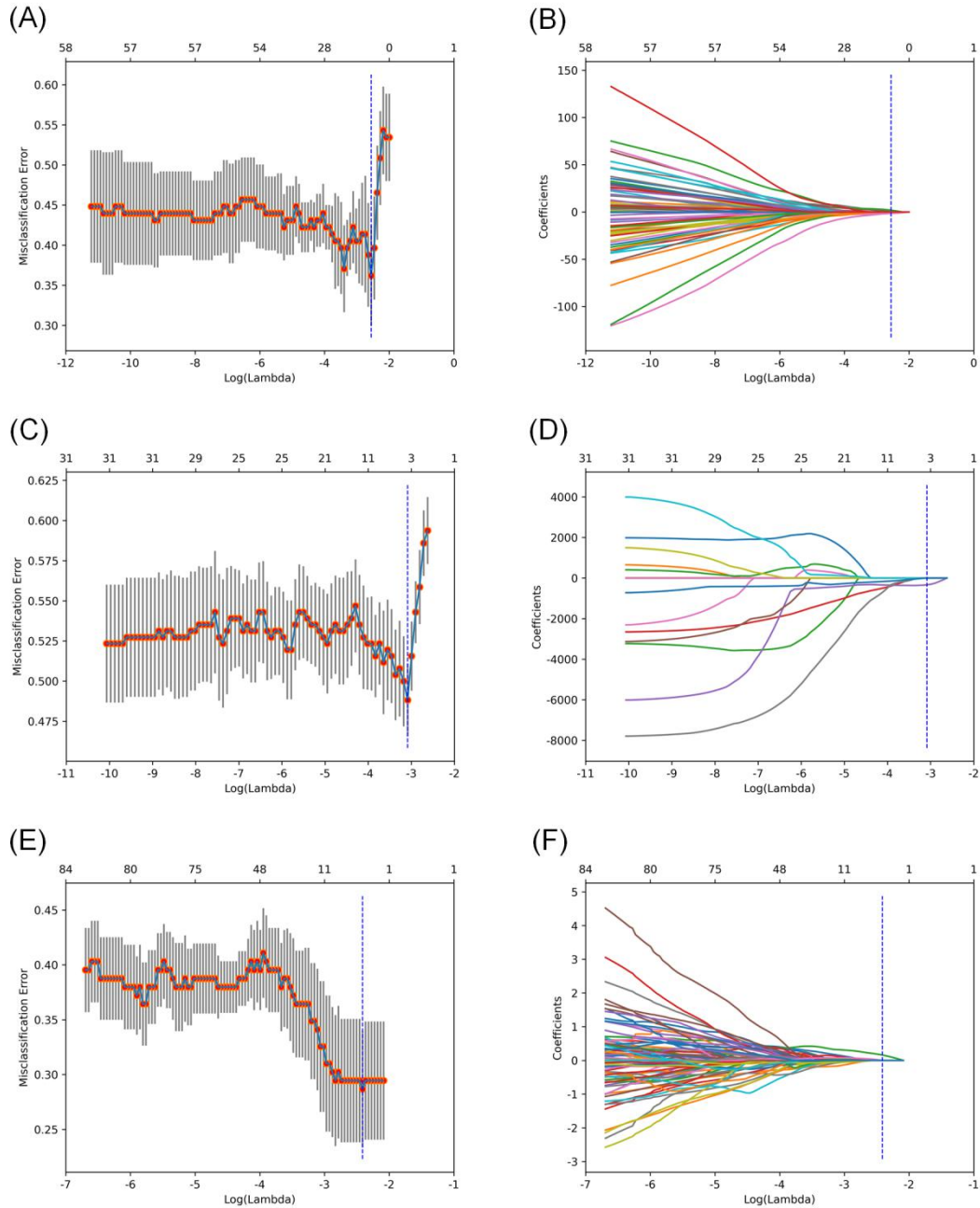
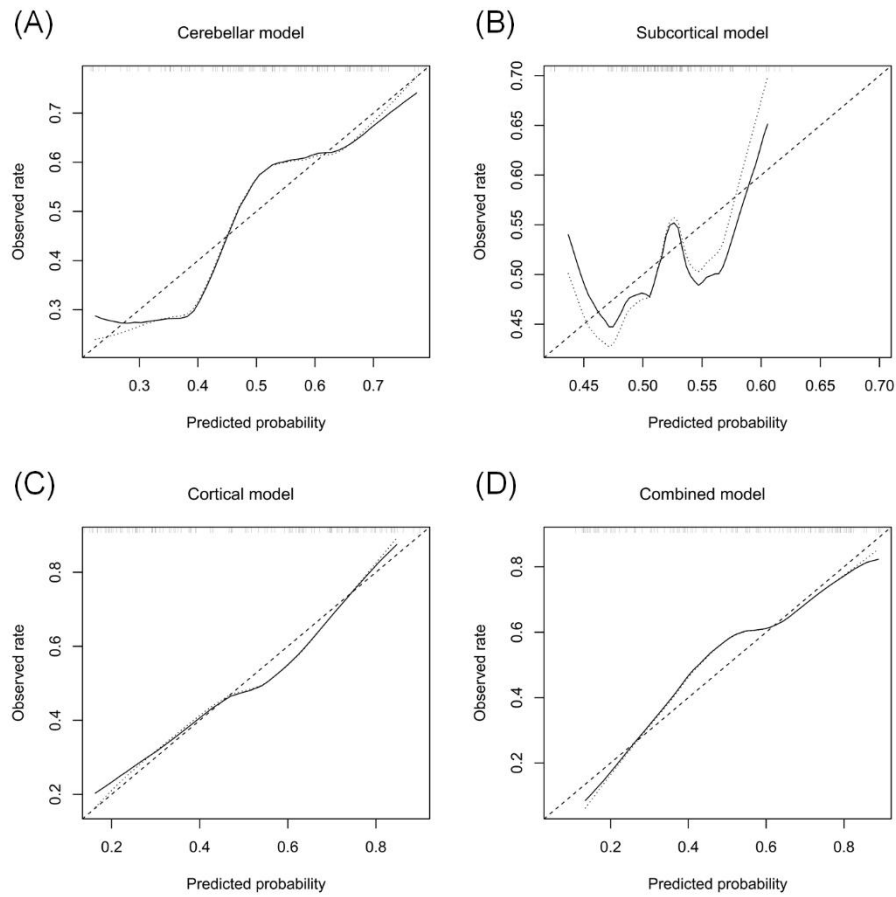


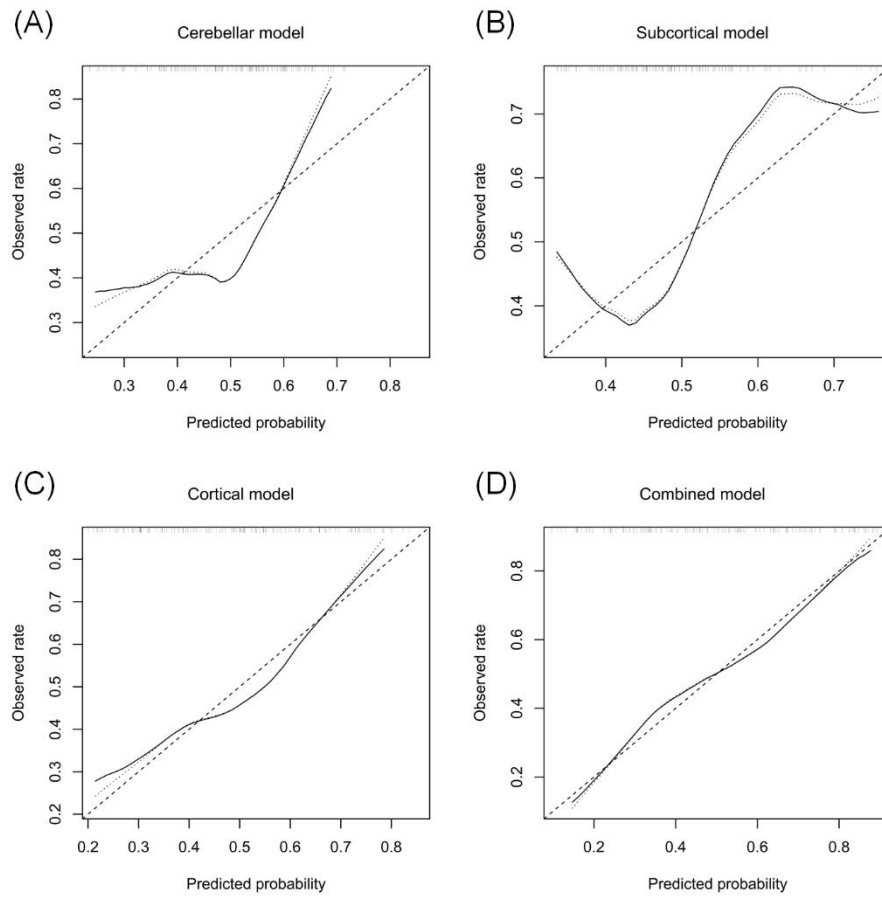
Supplementary figures



Supplementary Figure 1. LASSO regression-based feature selection. The variance threshold approach-based dimensionality reduction profile showed that the optimal $\log(\lambda)$ values were -2.5576, -3.0871 and -2.4132 for the cerebellar features (A), subcortical features (C) and cortical features (E), respectively. There were 5, 3 and 4 non-zero coefficients against the optimal $\log(\lambda)$ sequence for the cerebellar features (B), subcortical features (D) and cortical features (F), respectively.



Supplementary Figure 2. Calibration curve analysis of the Cerebellar model (A), Subcortical model (B), Cortical model (C) and Combined model (D) in the internal validation dataset.



Supplementary Figure 3. Calibration curve analysis of the Cerebellar model (A), Subcortical model (B), Cortical model (C) and Combined model (D) in the independent test dataset.