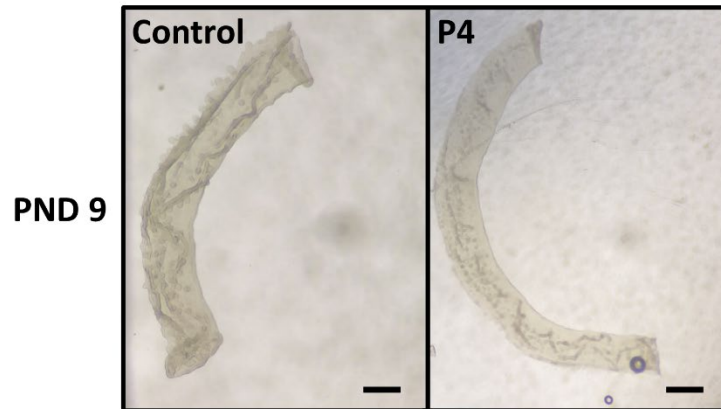


(A)



(B)

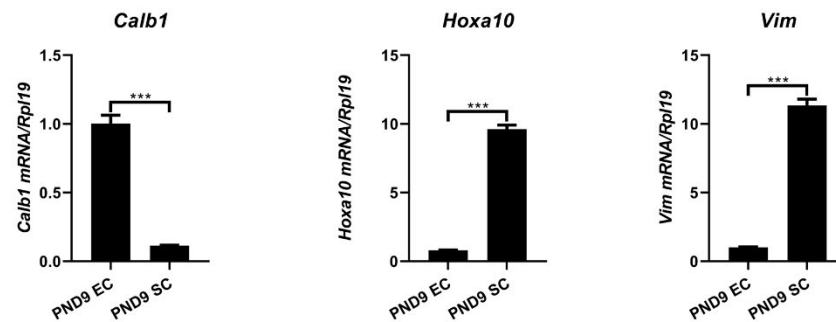


Figure S1 Intact uterine epithelium was digested and isolated from neonatal mice and its purity verification. Representative pictures of Endometrial epithelium digested and isolated from neonatal mice, Scale bar, 500 μ m (A). The expression of epithelial cell marker *Calbindin 1* (*Calb1*) and stromal cell marker *Homeobox A10* (*Hoxa10*) and *Vimentin* (*Vim*) in EC or SC on PND9 (B). EC, epithelium cell; SC, stroma cell. Results are means \pm SEM (n = 5). Bars with different superscripts are significantly different (P < 0.05).