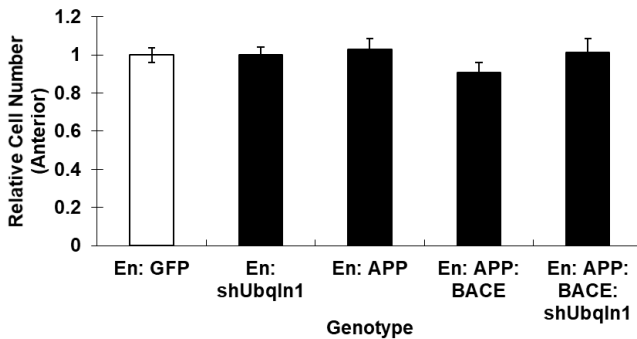


SUPPLEMENTARY MATERIAL

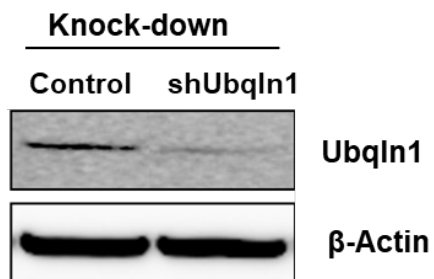
SUPPLEMENTARY FIGURES and FIGURE LEGENDS

Association of the Protein-Quality-Control Protein Ubiquilin-1 With Alzheimer's Disease Both in vitro and in vivo

Can Zhang, Shivangi M. Inamdar, Swathi Swaminathan, Daniel R. Marenda, and
Aleister J. Saunders



Supplementary Figure 1. Analysis of anterior compartments of *Drosophila* wing cell number. *Drosophila* wing cell numbers of the anterior compartments showed no significant differences comparing animals with different *UAS* constructs expressed in their posterior domain of wings. $p > 0.05$ (compared to En:GFP). Abbreviations: En=engrailed.



Supplementary Figure 2: Analysis of ubiquilin-1 knockdown in cells expressing shUbqln1 or control shRNA. SY5Y-APP-Gal4 cells were transfected with control shRNA with scrambled sequence or shUbqln1 and selected with 2 µg/ml puromycin for 7 days. Then the clonal cells of puromycin-resistant constructs were selected and analyzed for ubiquilin-1 levels by Western blotting analysis. β-Actin served as a loading control.