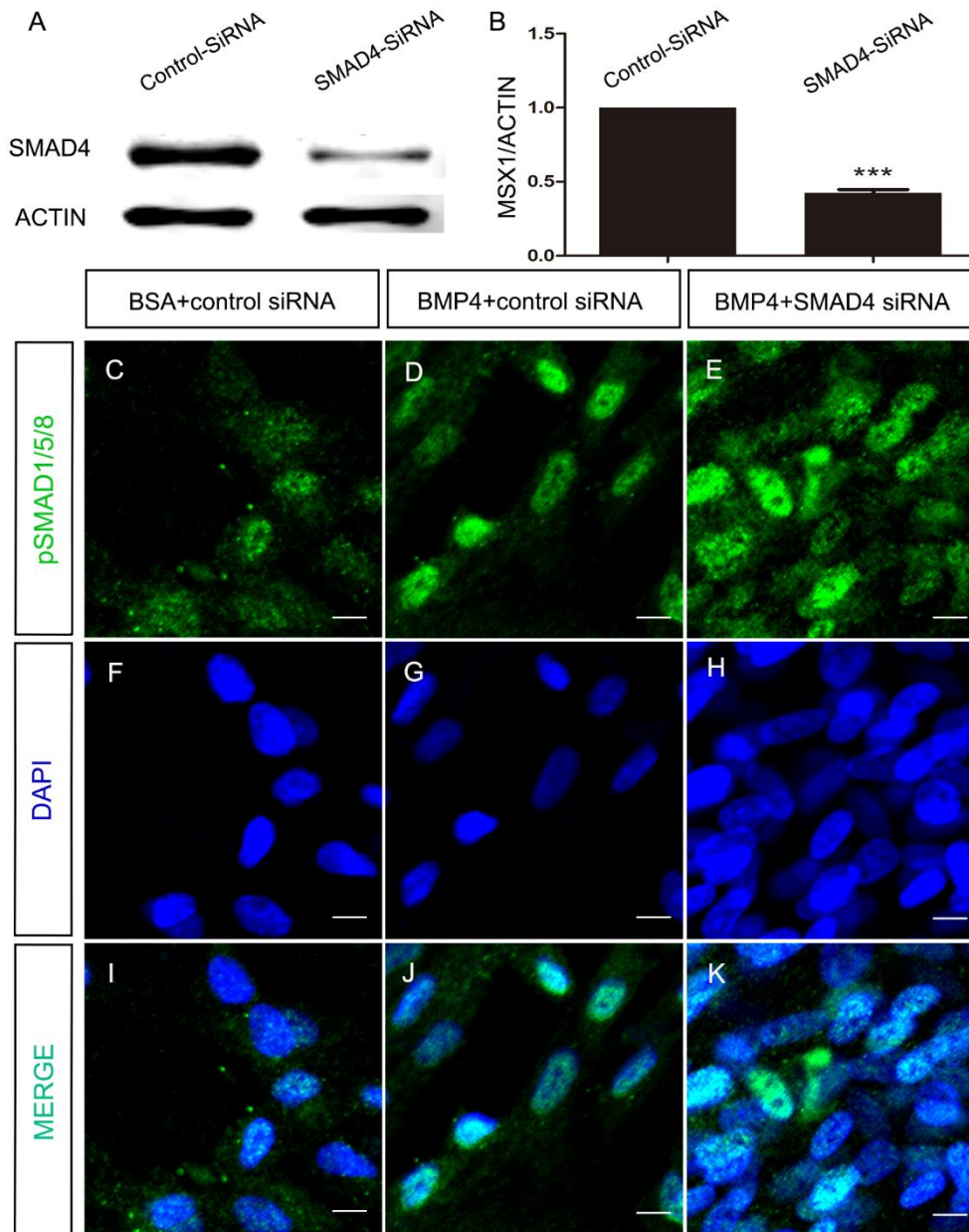
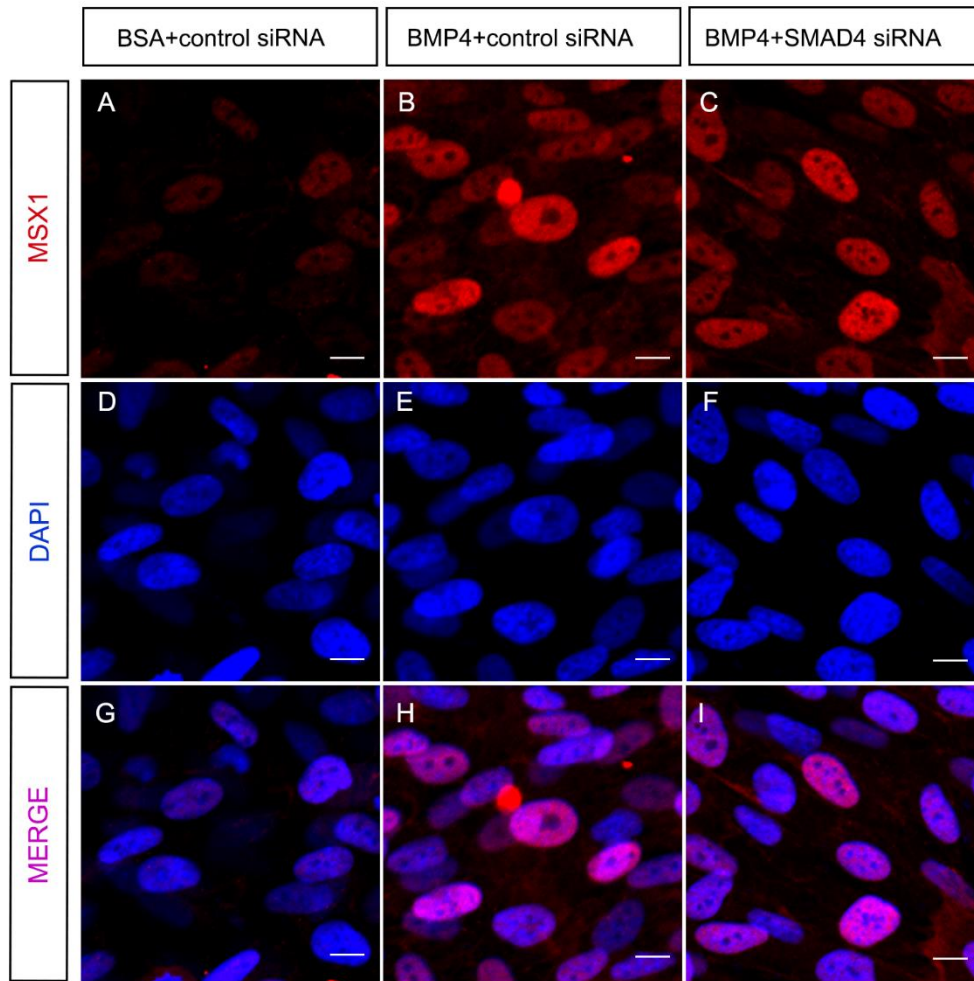


1 **Operation of the atypical canonical BMP signaling pathway during early human**
2 **odontogenesis**
3 **Supplementary material**



4

5 **Supplementary Figure 1. SMAD4 is not required for BMP4-**
6 **induced pSMAD1/5/8 nuclear translocation in the ihDMCs.** (A, B) Western blot
7 shows about 60% knockdown efficiency of SMAD4 siRNA. (C-K) Immunostaining
8 shows that BMP4-induced nuclear translocation of pSMAD1/5/8 is not effected by
9 knockdown of *SMAD4*. Error bars represent standard deviation. ***, p < 0.001.
10 Bar=10um.



11

12 **Supplementary Figure 2. SMAD4 is not required for BMP4-**
 13 **induced Msx1 expression in the ihDMCs. (A-I)** Immunostaining shows that BMP4-
 14 induced MSX1 expression is not effected by knockdown of *SMAD4*. Bar=10um