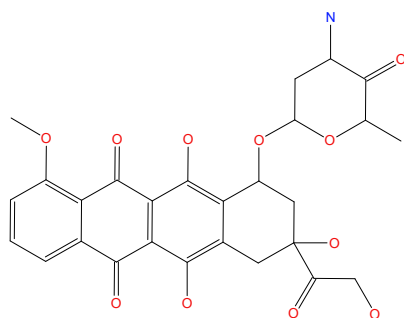
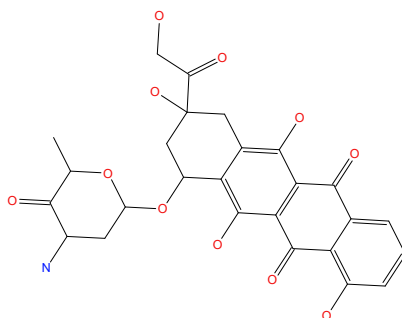


Table S3. Structures of Dox metabolites predicted by the knowledge-based expert system Meteor Nexus (v. 3.1.0, Meteor KB 2018 1.0.0, Lhasa Ltd., <https://www.lhasalimited.org/>) with the minimal level of likelihood "plausible". The numbers of metabolites are listed below the structures (see also Table S1); 0 codes for metabolites that appear in the metabolic tree of Dox only and 1 codes for metabolites that appear in the metabolic trees of both, Dox and Sdox (see Table S5).

Enzyme: ADH

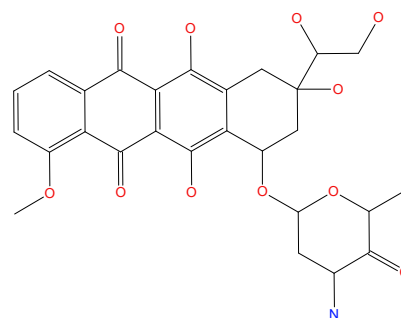
M1

1

Enzyme: CYP450

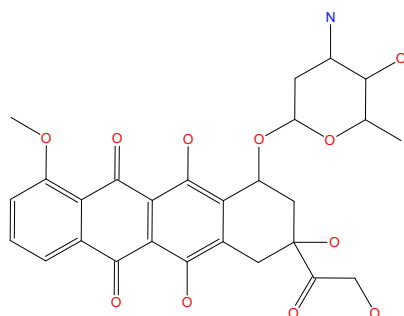
M15

1

Enzyme: ADH

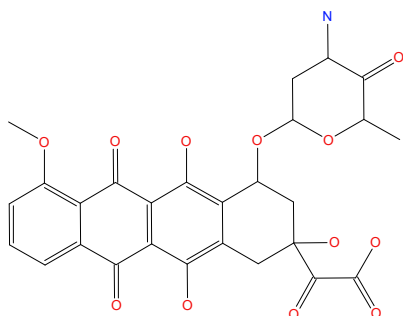
M16

1

Enzyme: ADH

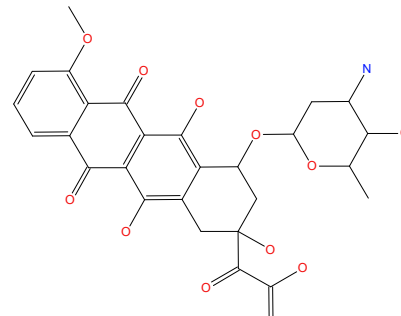
Dox

1

Enzyme: ADH

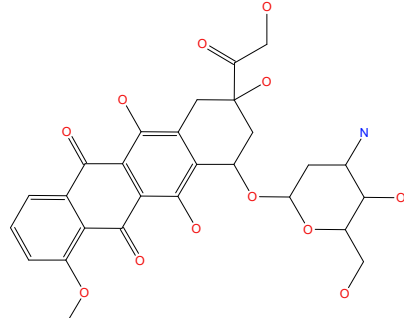
M17

1

Enzyme: ADH

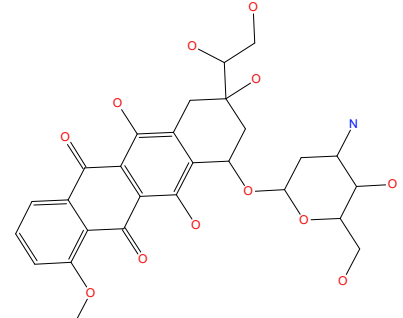
M8

1

Enzyme: CYP450

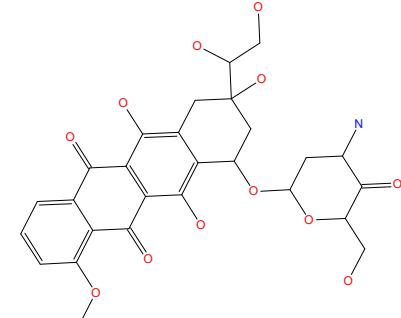
M2

1

Enzyme: ADH

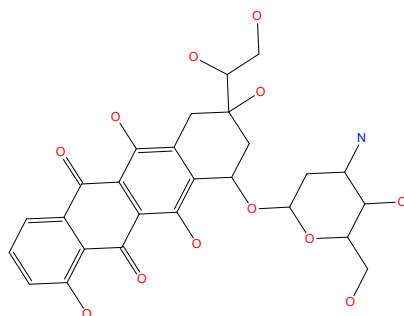
M24

1

Enzyme: ADH

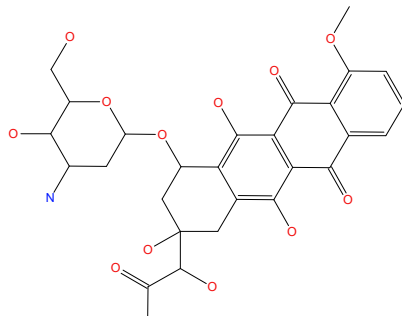
M61

0

Enzyme: CYP450

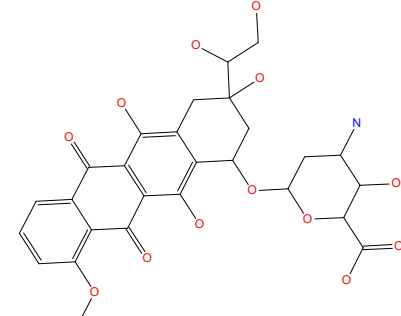
M78

0

Enzyme: ADH

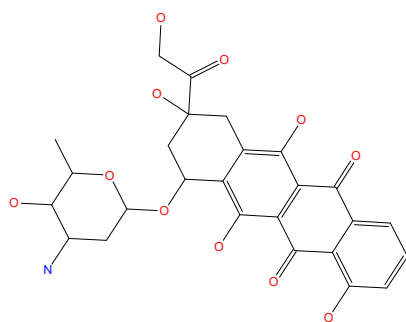
M79

0

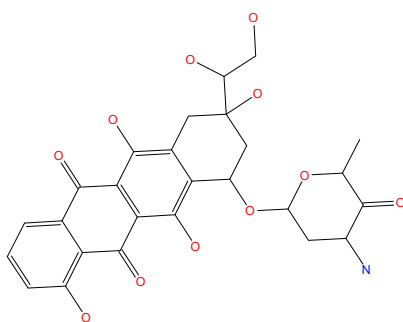
Enzyme: ADH

M80

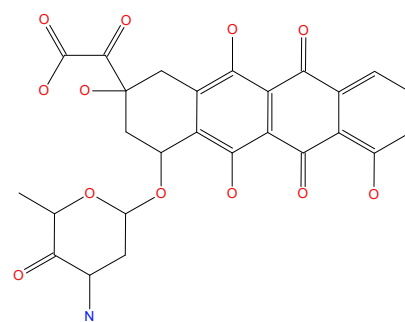
0

Enzyme: CYP450

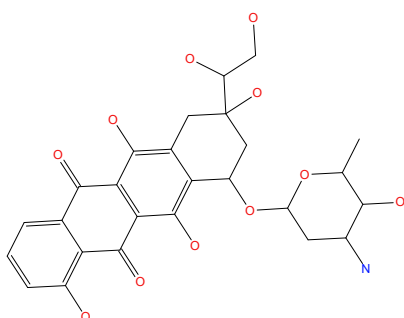
M6
1

Enzyme: ADH

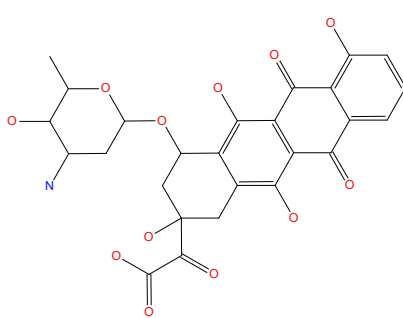
M57
0

Enzyme: ADH

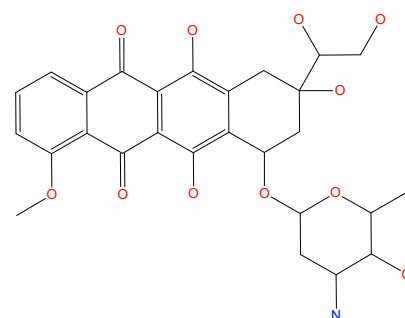
M58
0

Enzyme: ADH

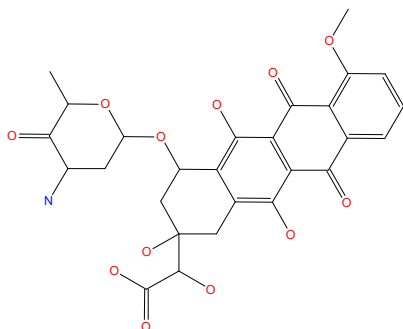
M32
1

Enzyme: ADH

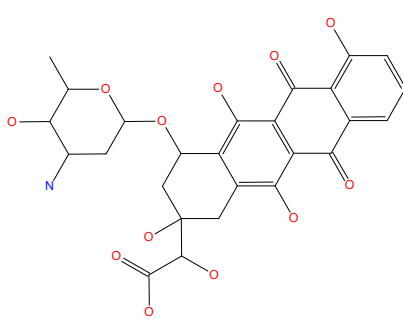
M33
1

Enzyme: ADH

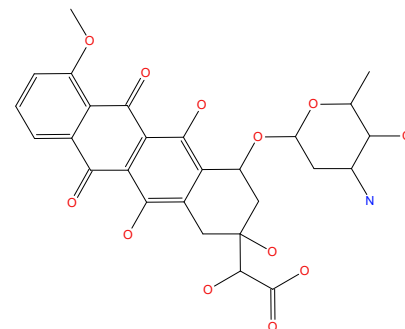
M7
1

Enzyme: ADH

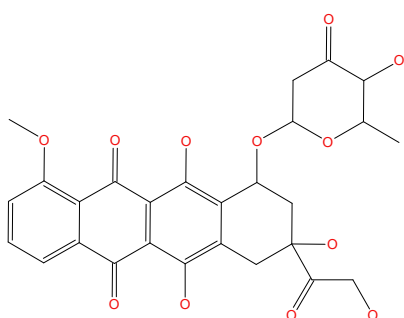
M65
0

Enzyme: ADH

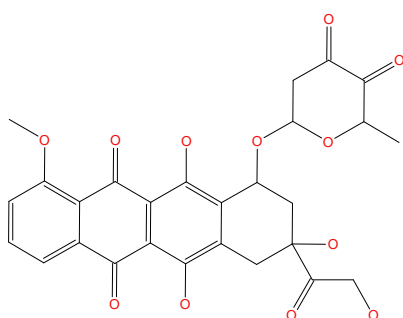
M86
0

Enzyme: ADH

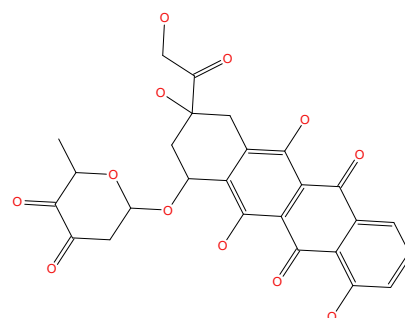
M39
1

Enzyme: CYP450

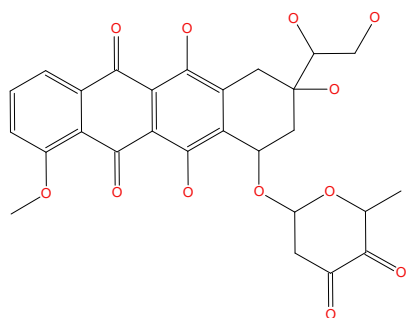
M9
1

Enzyme: ADH

M18
1

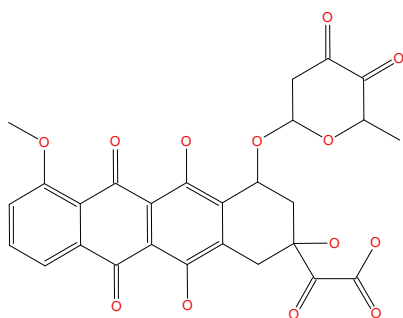
Enzyme: CYP450

M59
0

Enzyme: ADH

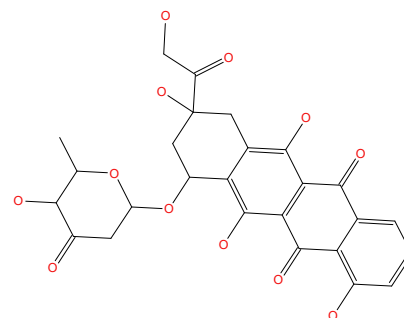
M66

0

Enzyme: ADH

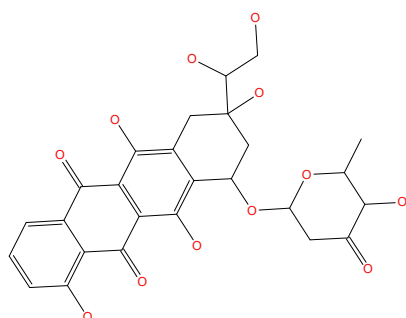
M72

0

Enzyme: CYP450

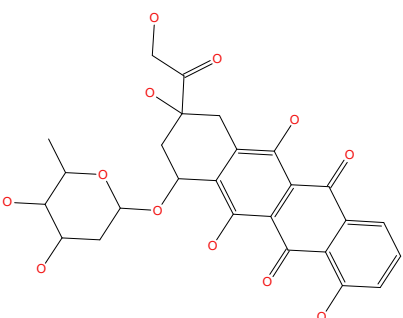
M34

1

Enzyme: ADH

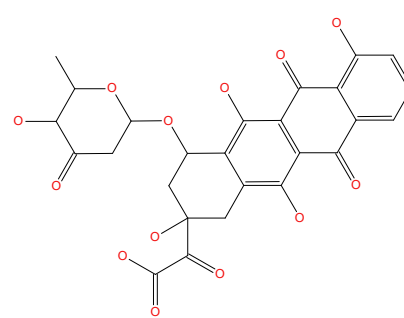
M87

0

Enzyme: ADH

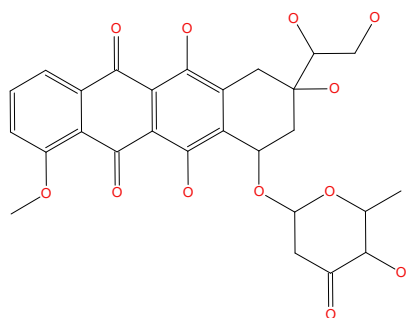
M109

0

Enzyme: ADH

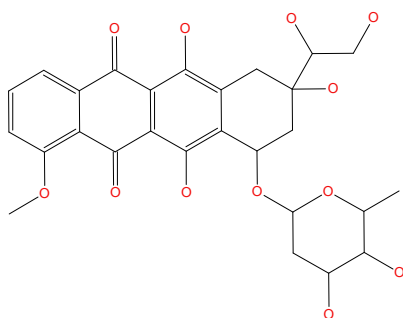
M93

0

Enzyme: ADH

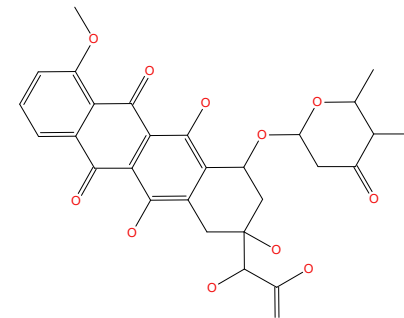
M40

1

Enzyme: ADH

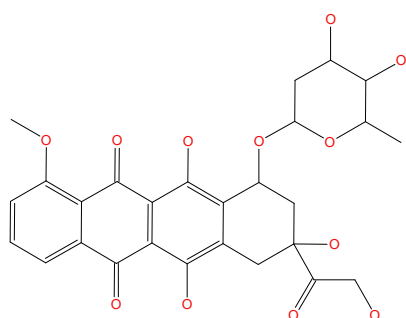
M114

0

Enzyme: ADH

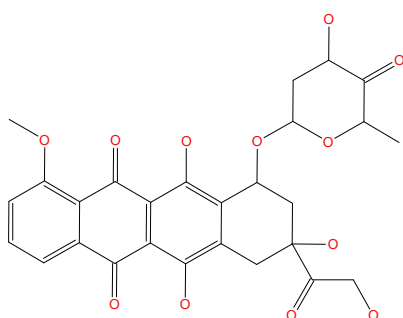
M99

0

Enzyme: ADH

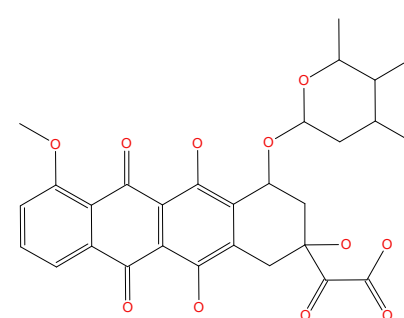
M50

1

Enzyme: ADH

M124

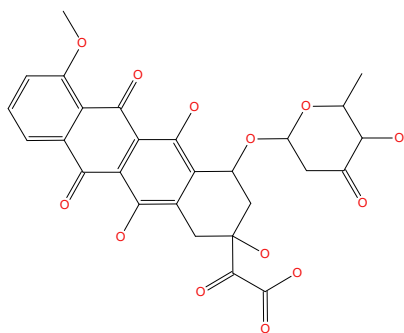
0

Enzyme: ADH

M120

0

Enzyme: ADH



M45

1