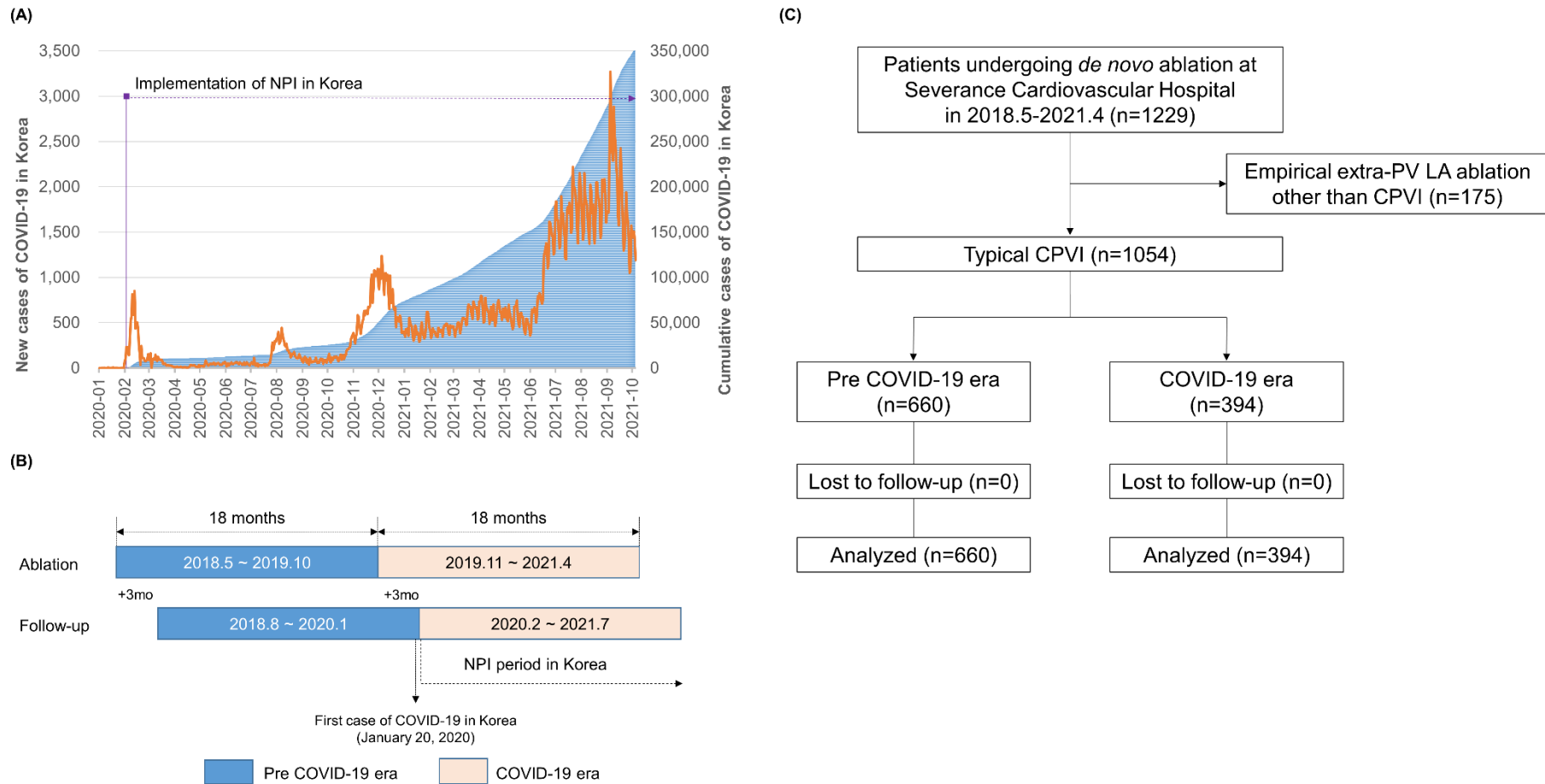


Supplemental Figure 1. (A) Number of COVID-19 cases in Korea, (B) study inclusion criteria and follow-up periods, and (C) flowchart of the study.



AF, atrial fibrillation; COVID-19, coronavirus disease 2019; CPVI, circumferential pulmonary vein isolation; NPI, nonpharmaceutical intervention; PV, pulmonary vein.