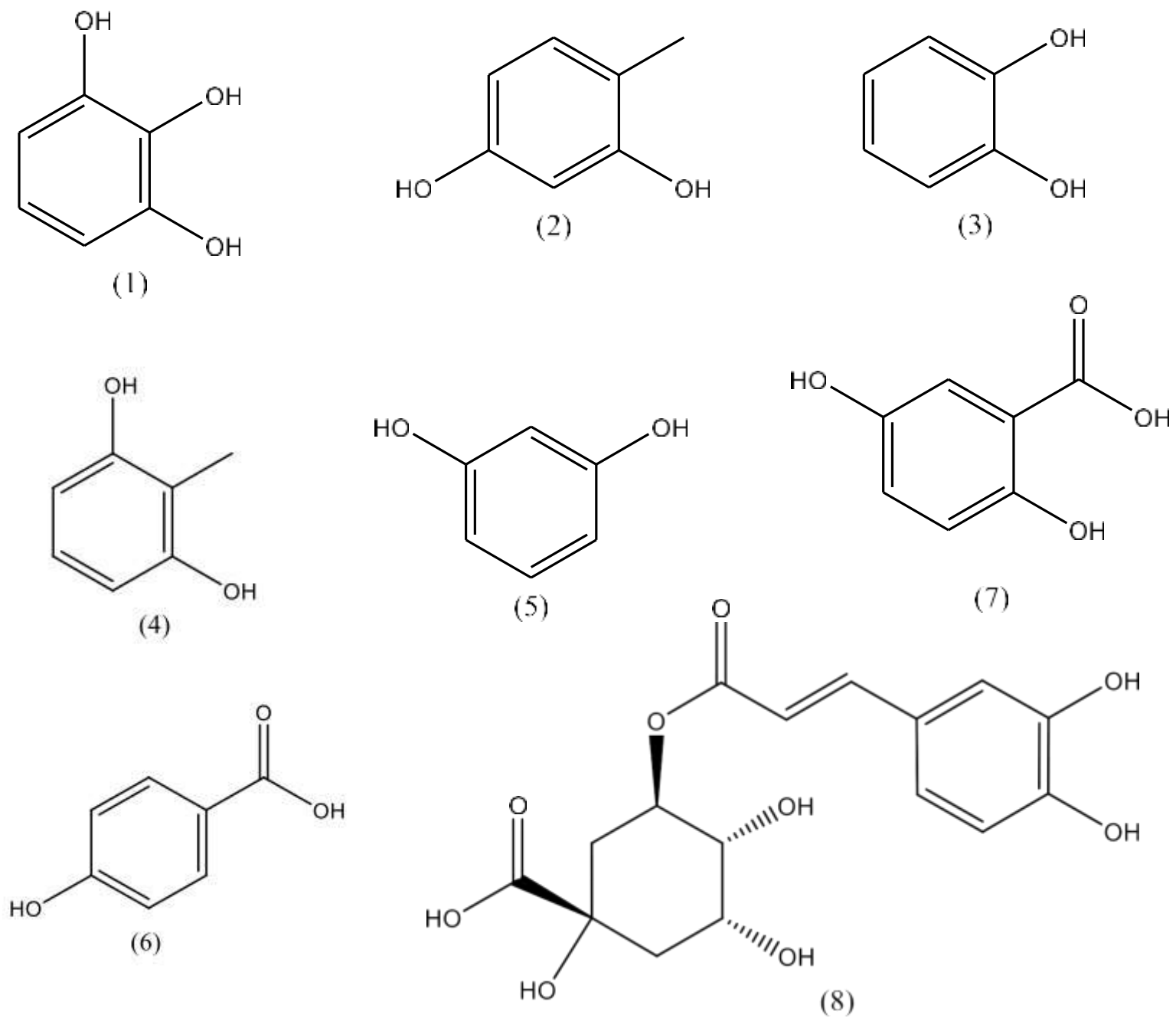


Supplementary Material

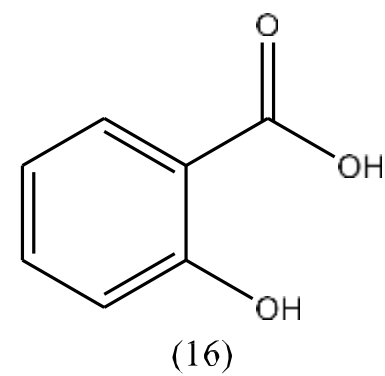
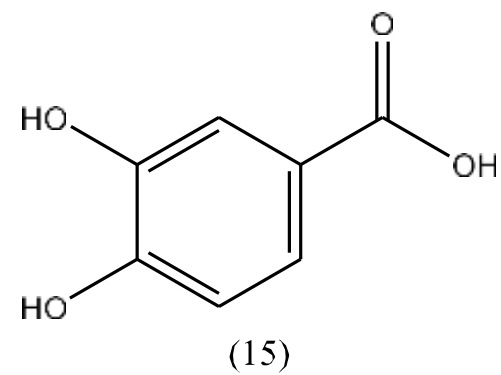
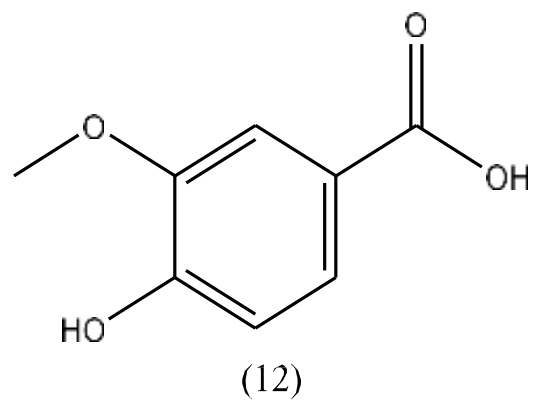
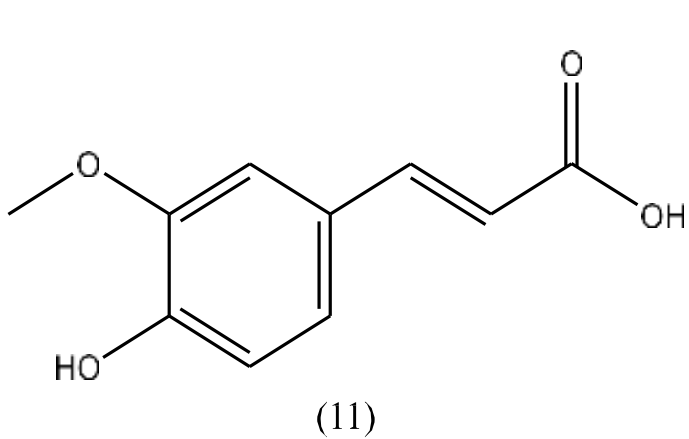
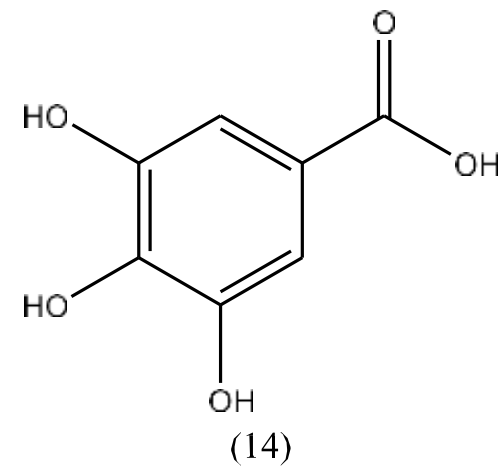
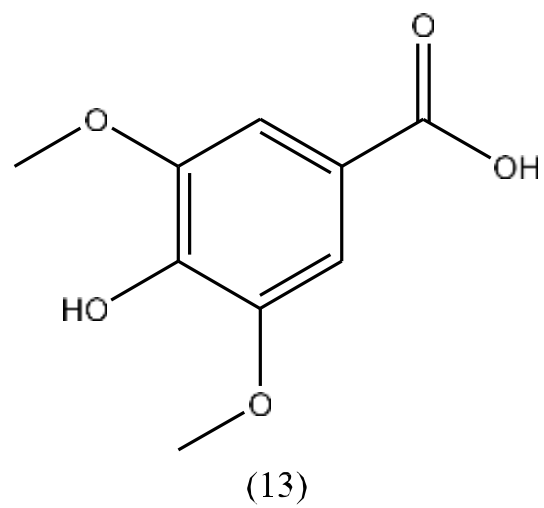
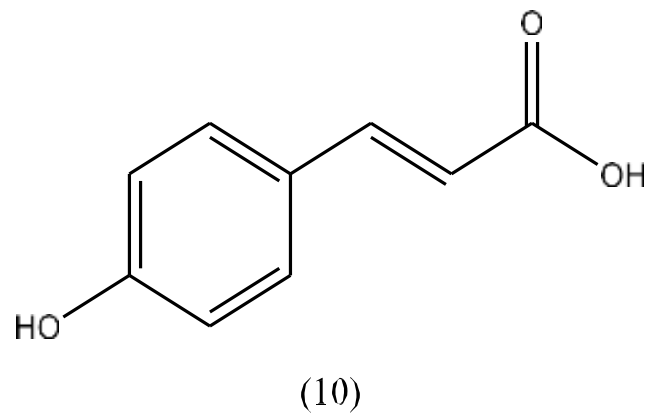
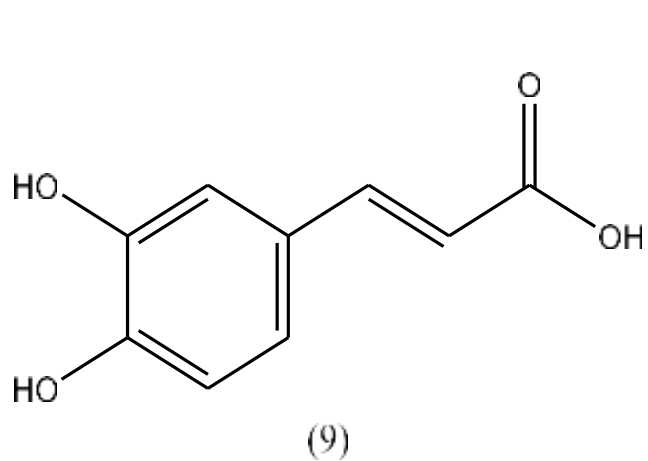
***Eichhornia crassipes* Mart.: A comprehensive review of its chemical composition, traditional use, and value-added products**

Widad Ben Bakrim ^{1,2}, Amine Ezzariai ¹, Fadoua Karouach ¹, Mansour Sobeh ², Mulugeta Kibret ^{1,3}, Mohamed Hafidi ^{2,4}
*, Lamfeddal Kouisni ¹, Abdelaziz Yasri ^{2,5}

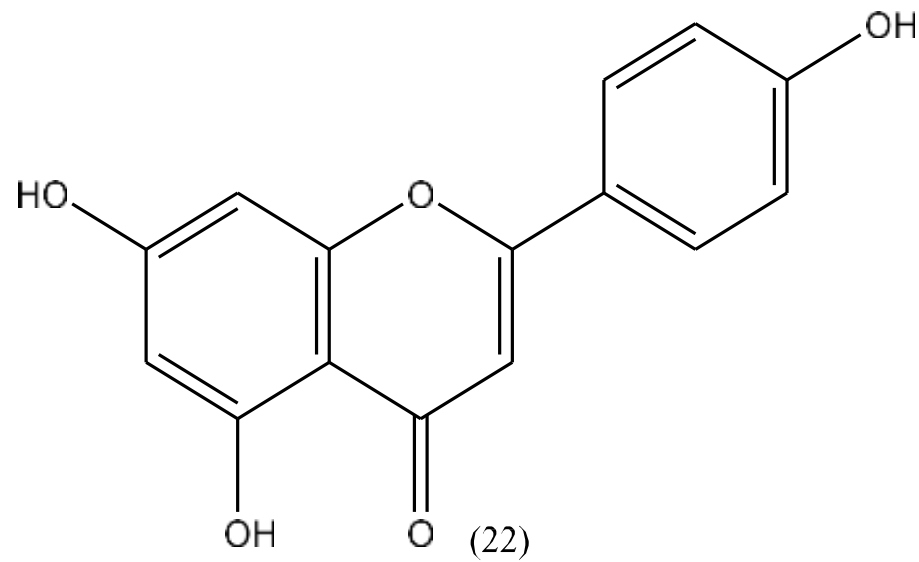
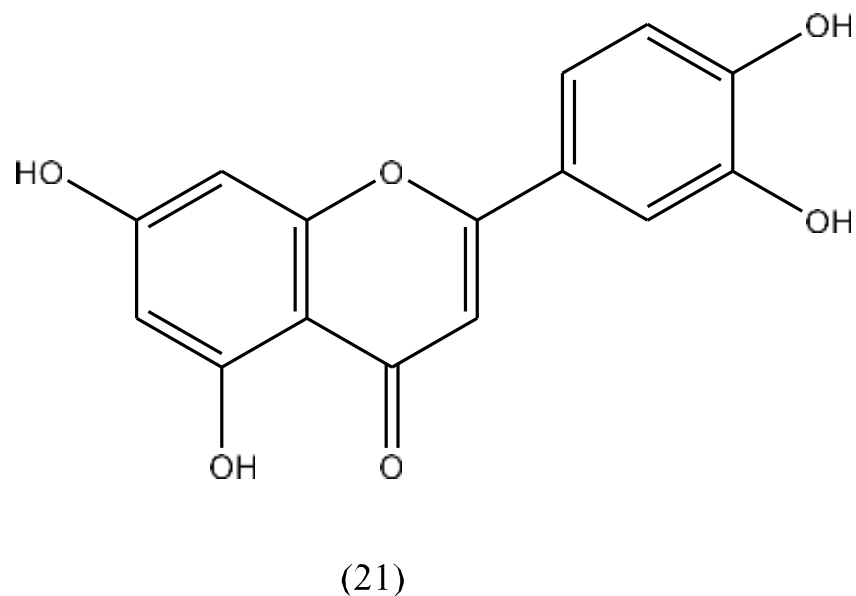
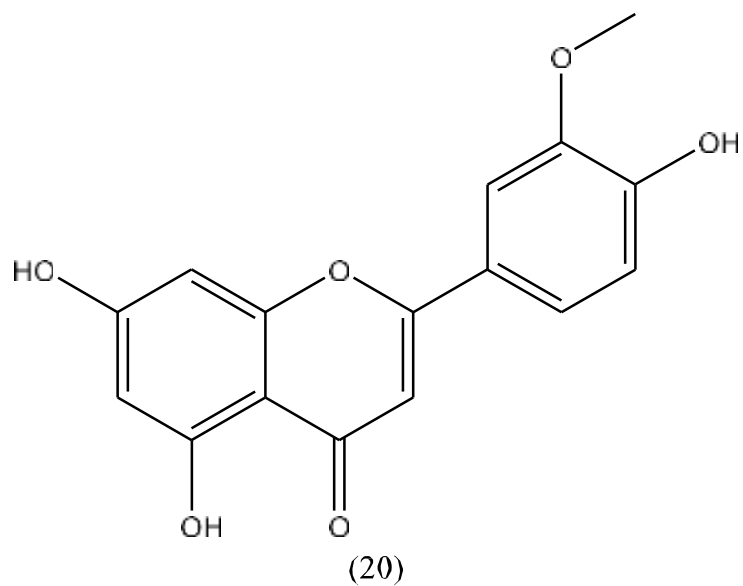
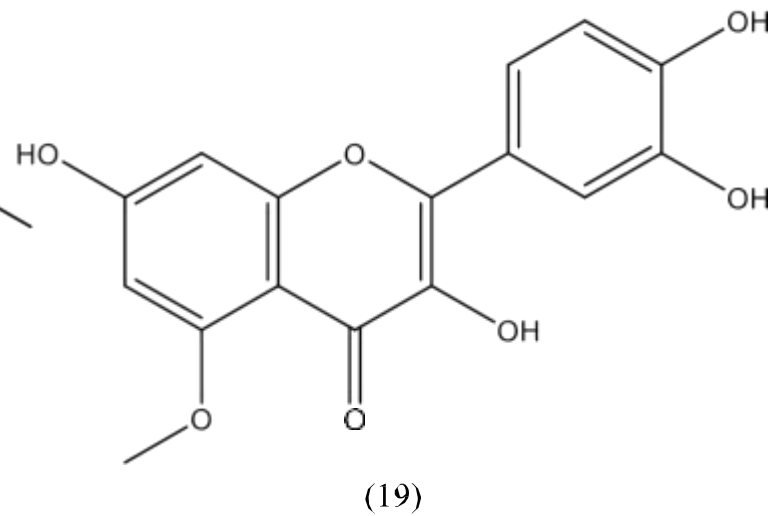
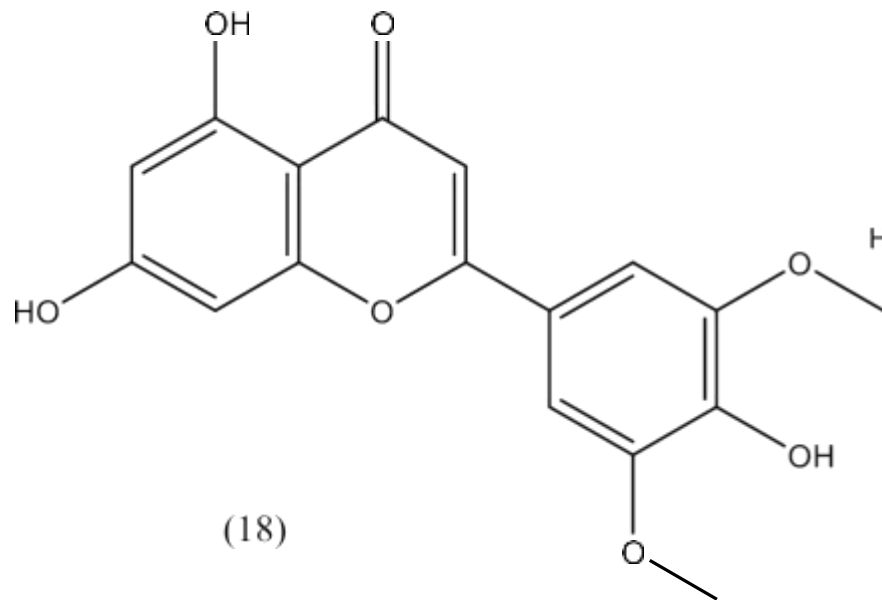
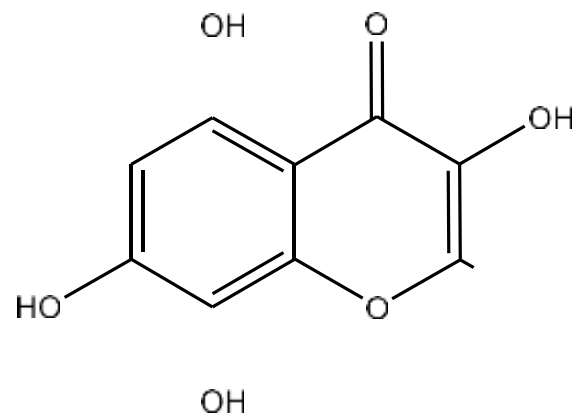
*** Correspondence: Mohamed Hafidi**
hafidi@uca.ac.ma



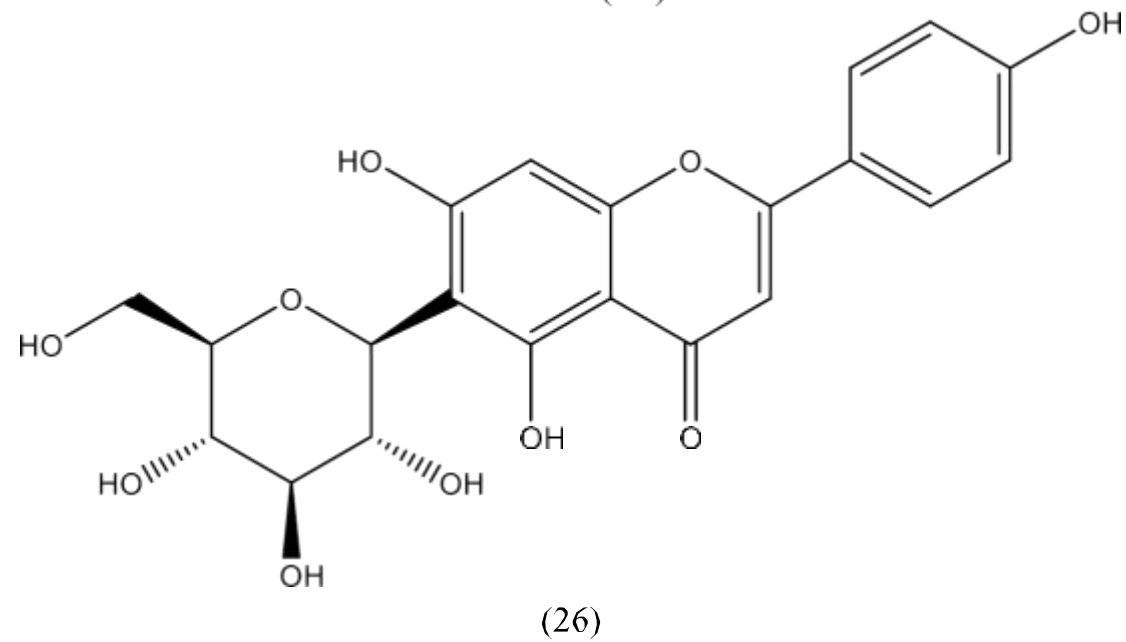
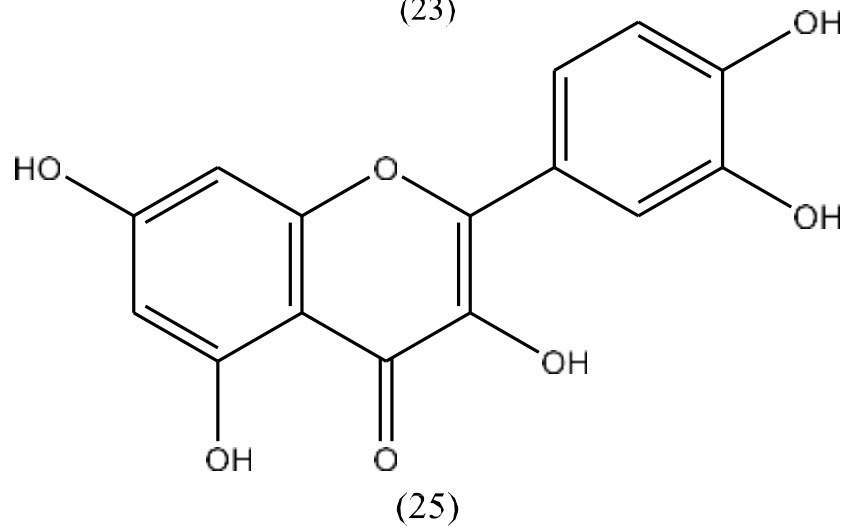
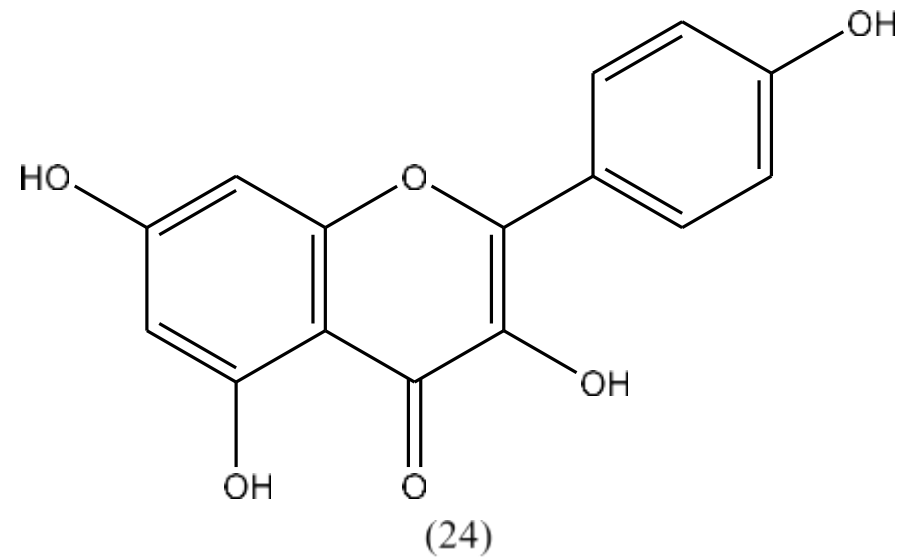
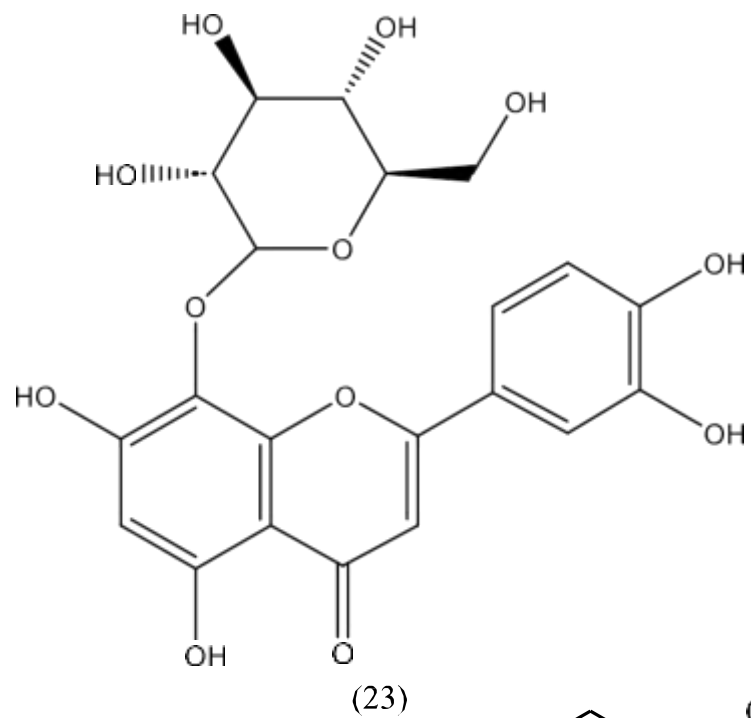
Supplementary Figure 1S. Structure of reported phenolic compounds from *E. crassipes*.



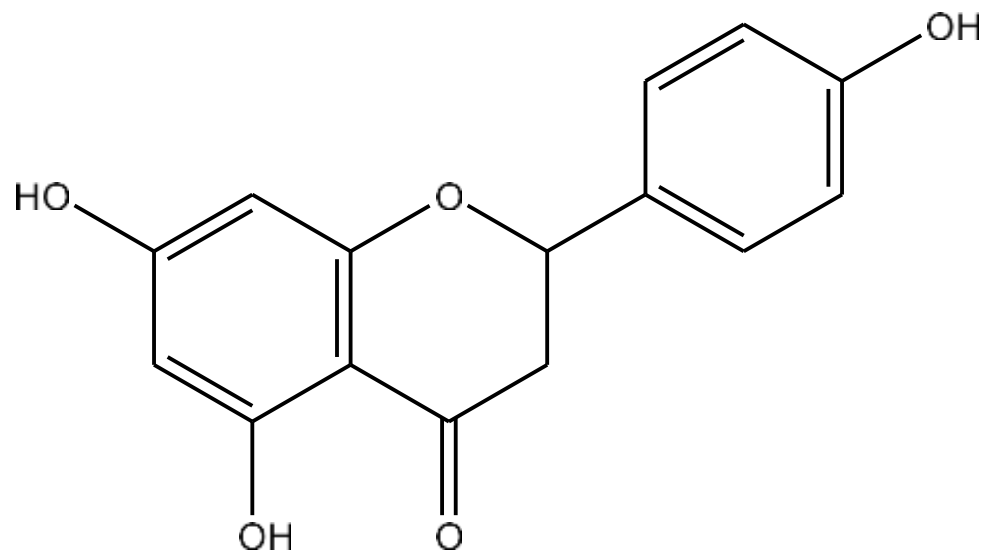
Supplementary Figure 1S. Continued.



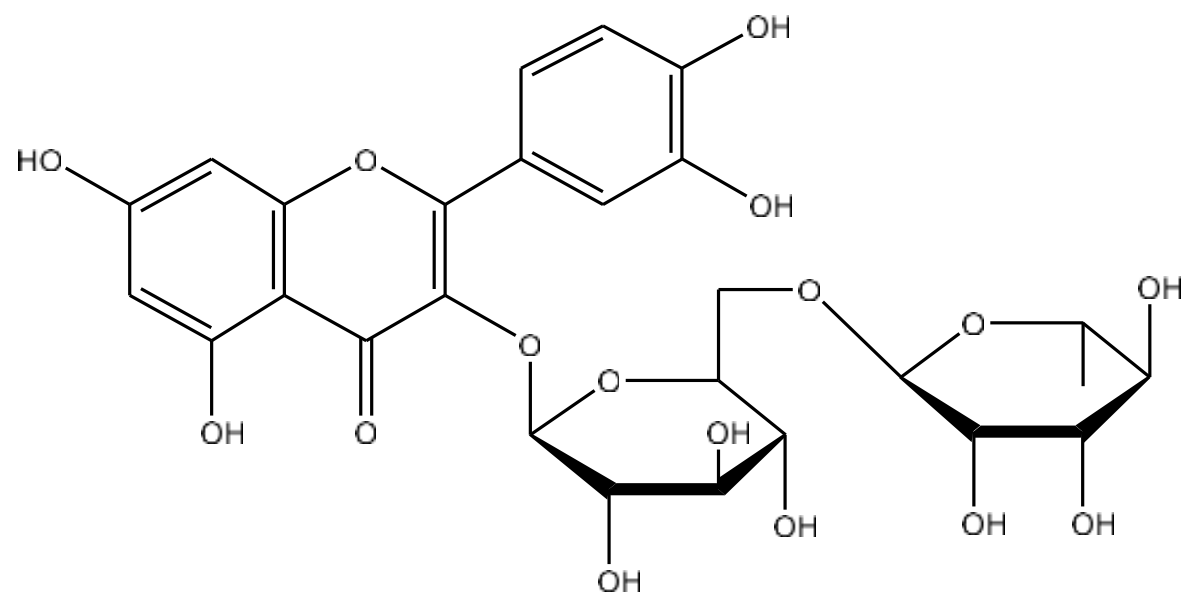
Supplementary Figure 2S. Structure of reported flavonoids from *E. crassipes*.



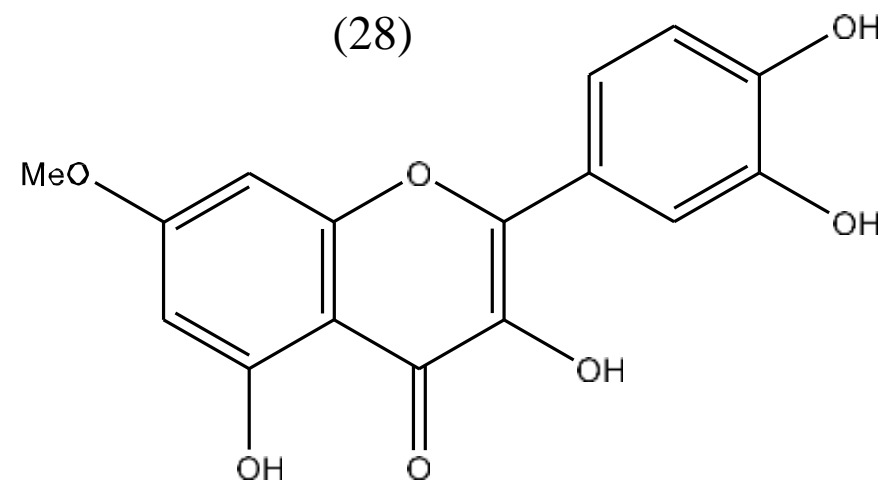
Supplementary Figure 2S. *Continued.*



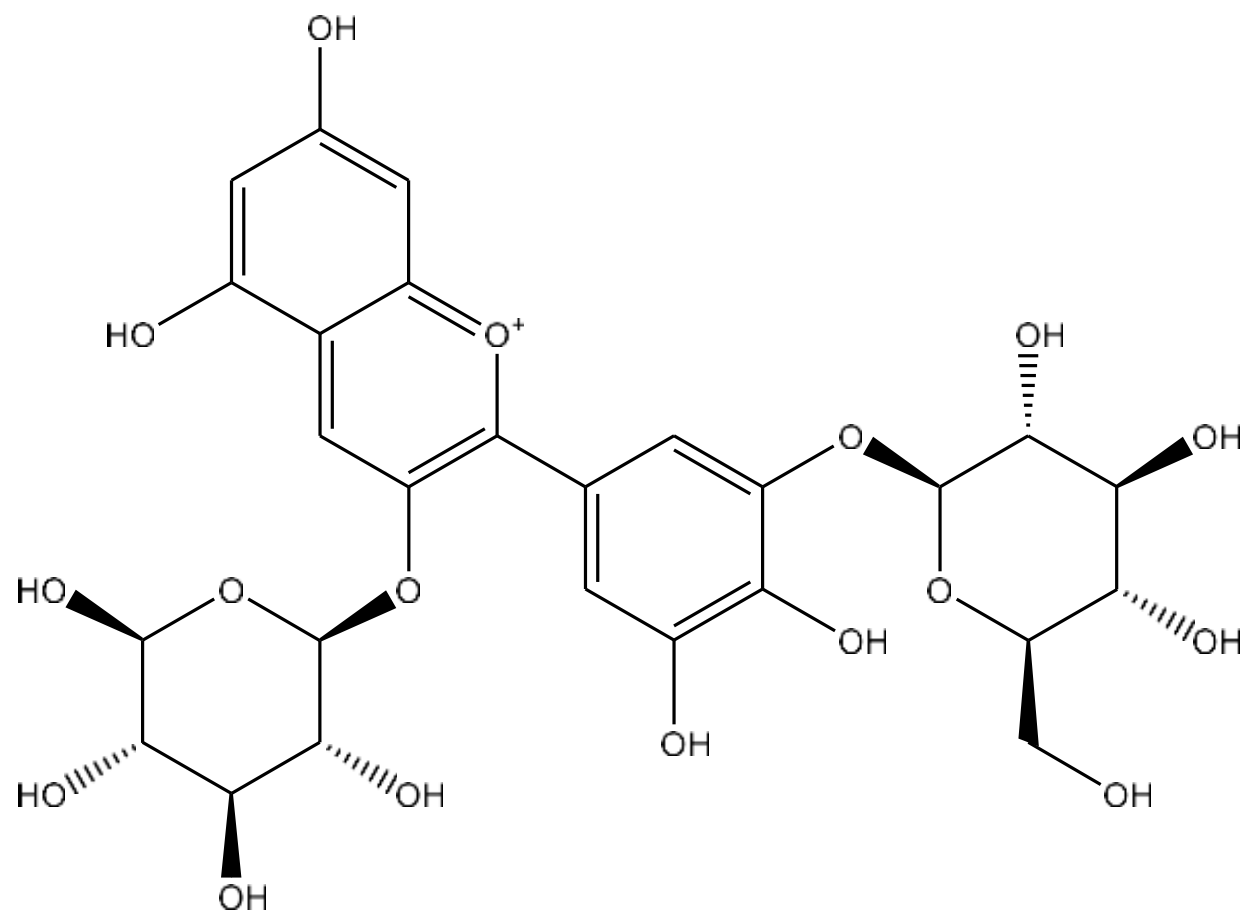
(27)



(29)

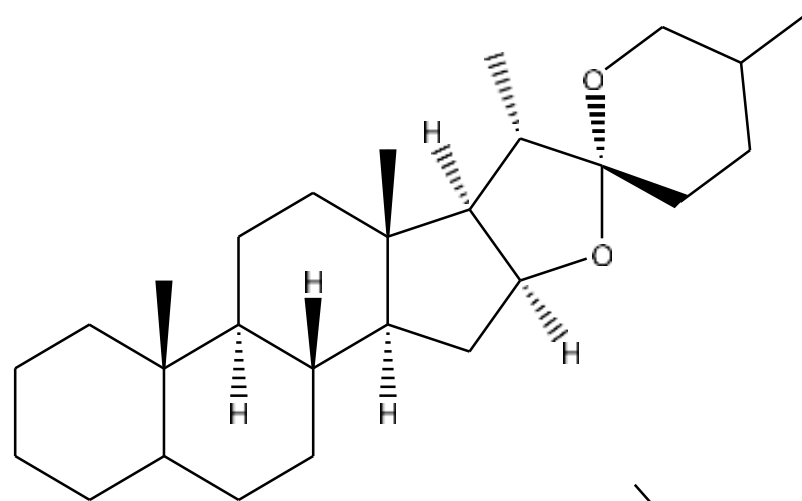


(30)

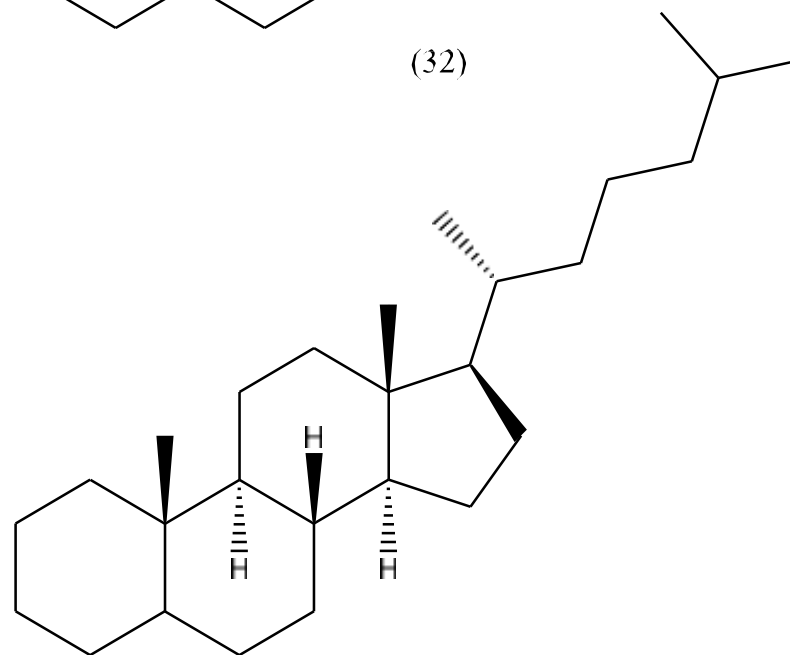


(31)

Supplementary Figure 2S.*Continued*

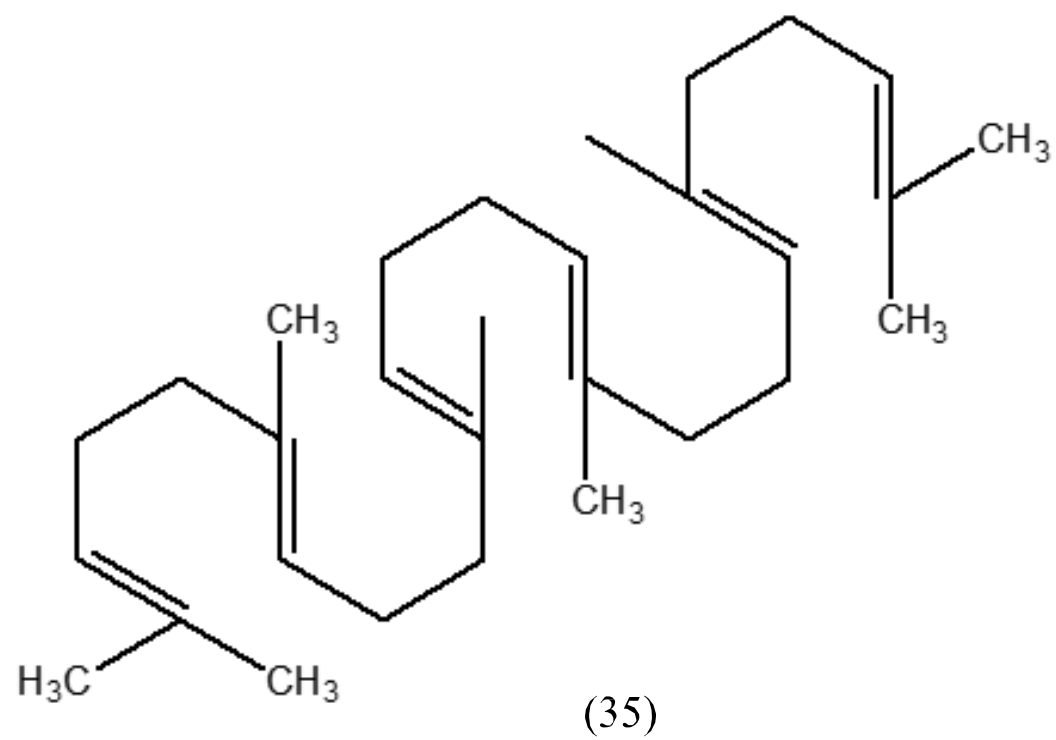
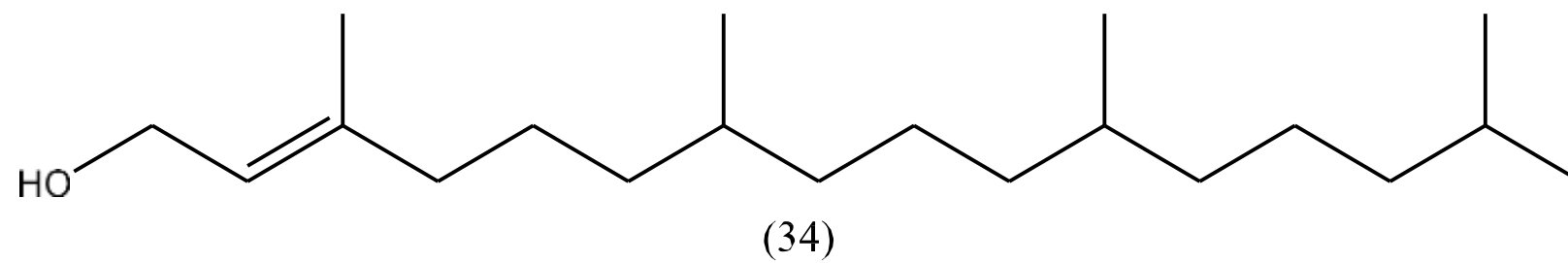


(32)

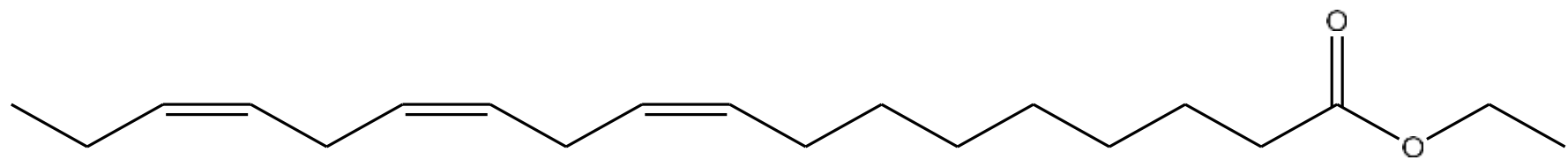


(33)

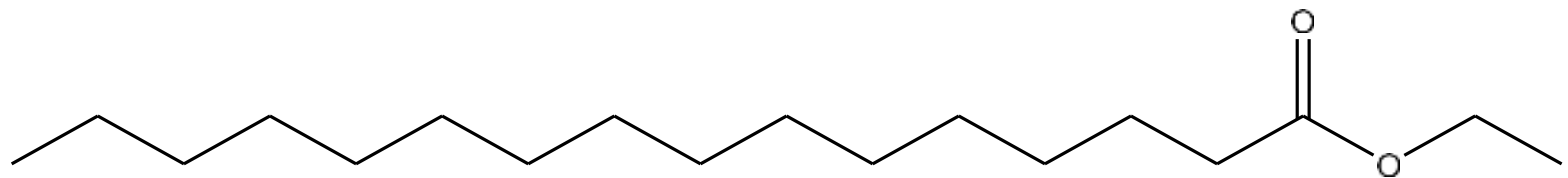
Supplementary Figure 3S. Structure of saponins from *E. crassipes*.



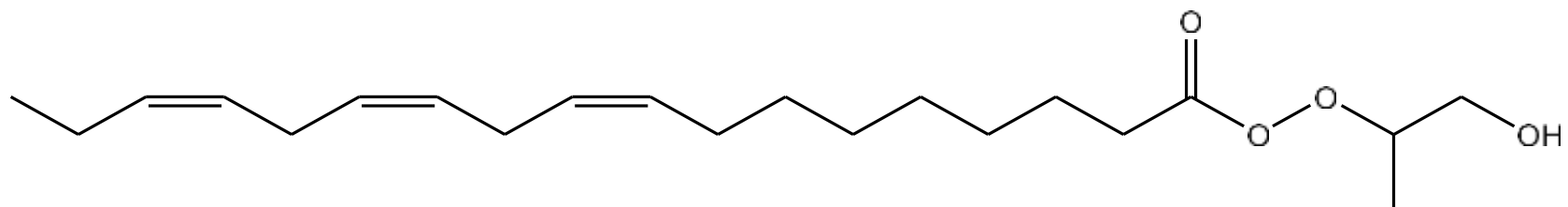
Supplementary Figure 4S. Structure of reported terpenoids from *E. crassipes*.



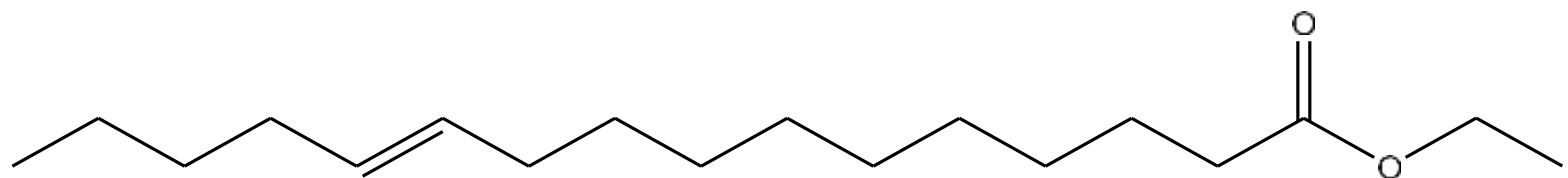
(37)



(38)

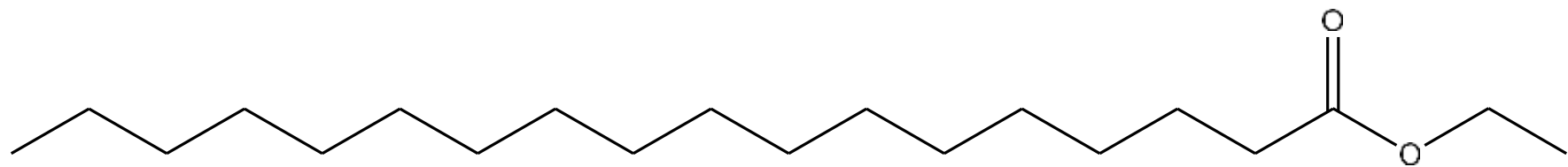


(39)

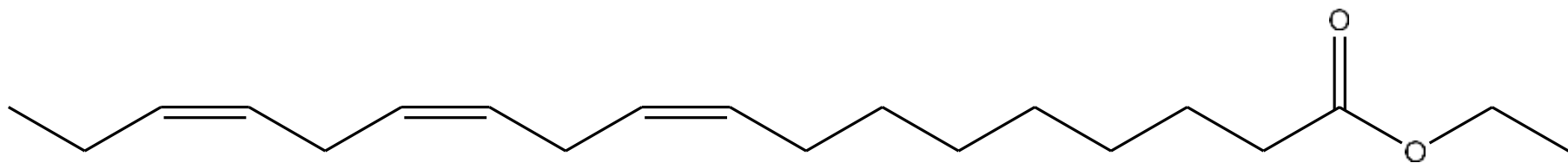


(40)

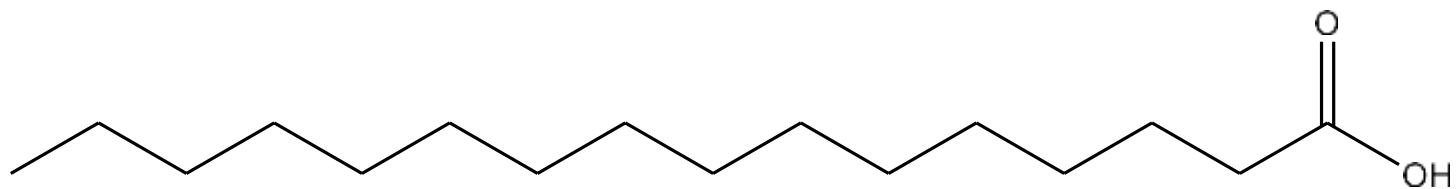
Supplementary Figure 5S. Structure of reported fatty acids from *E. crassipes*.



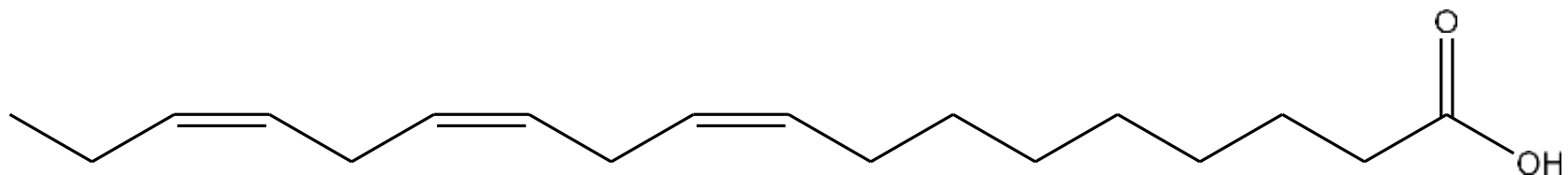
(41)



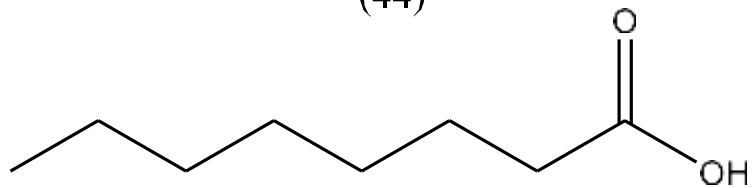
(42)



(43)

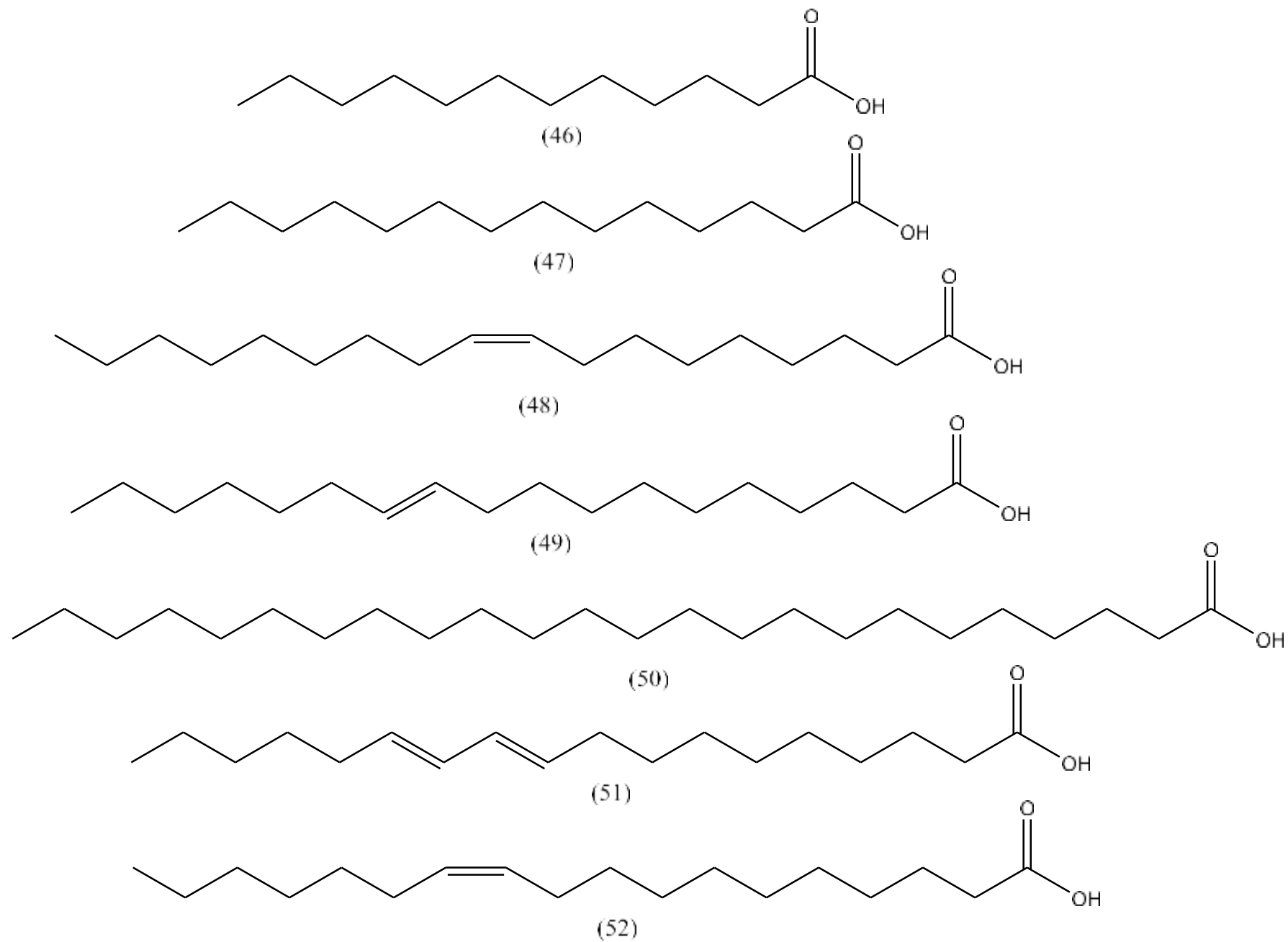


(44)

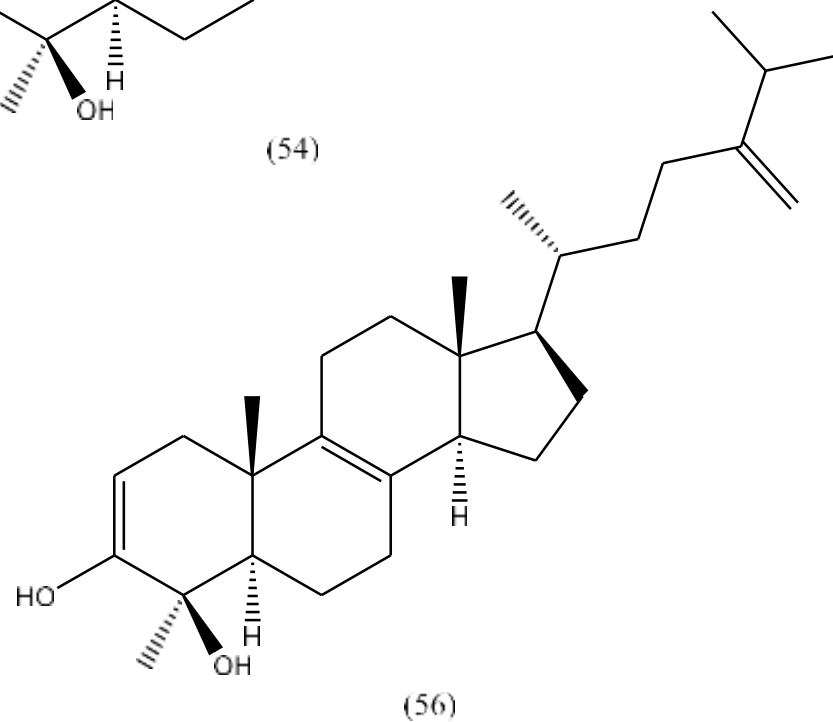
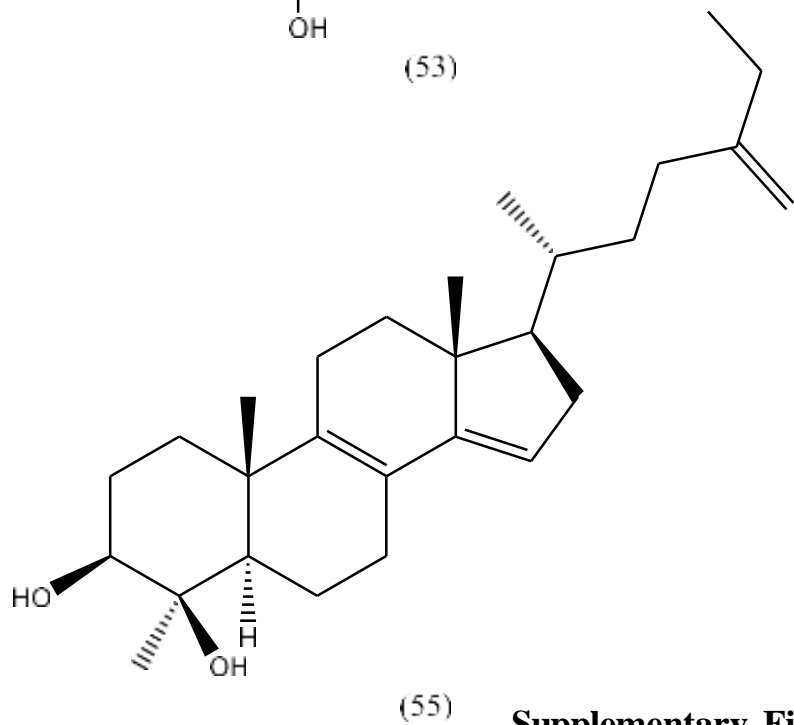
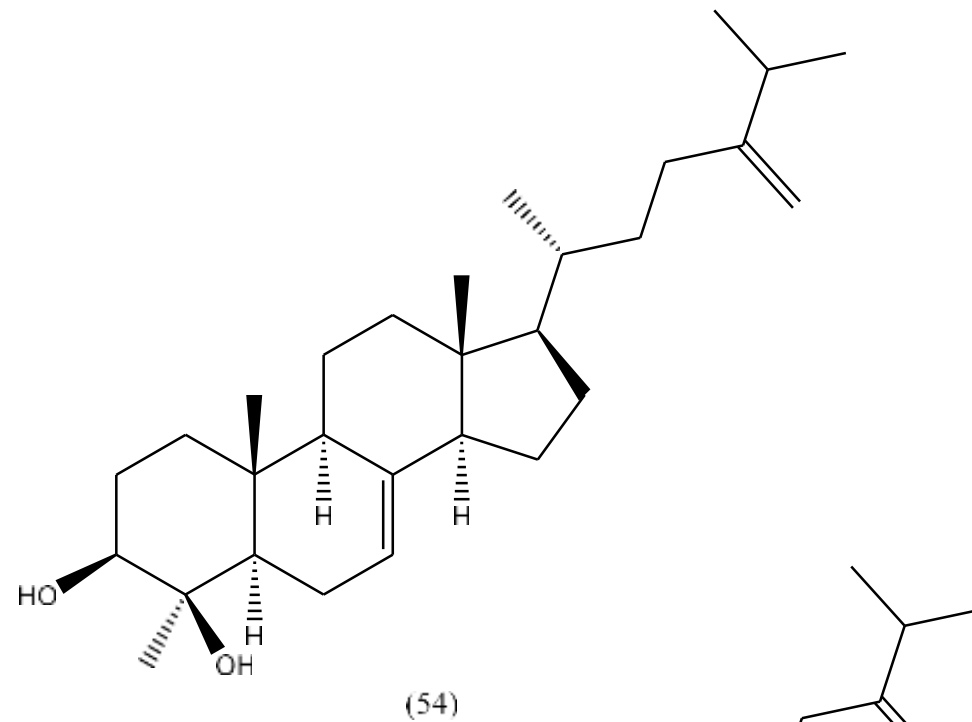
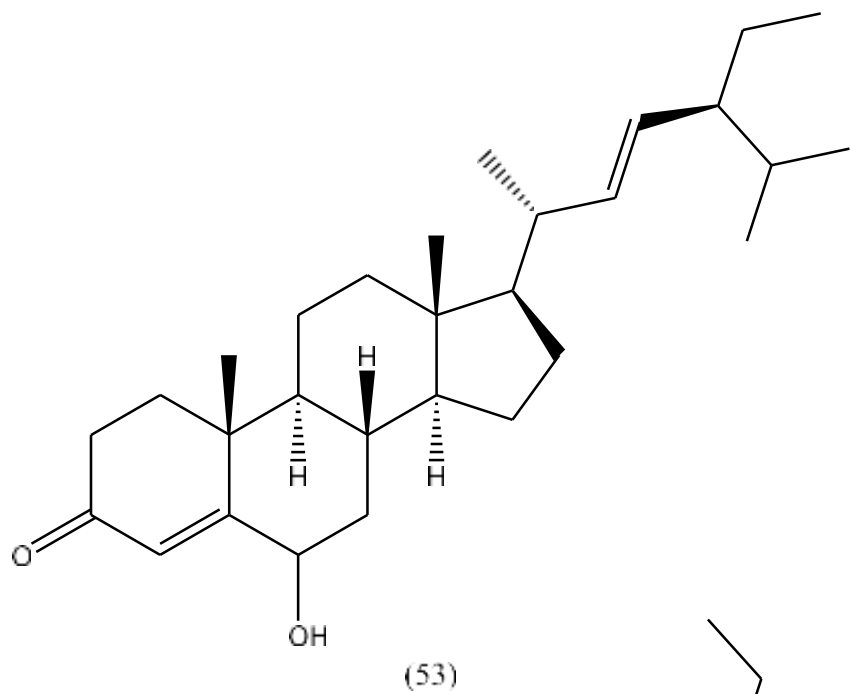


(45)

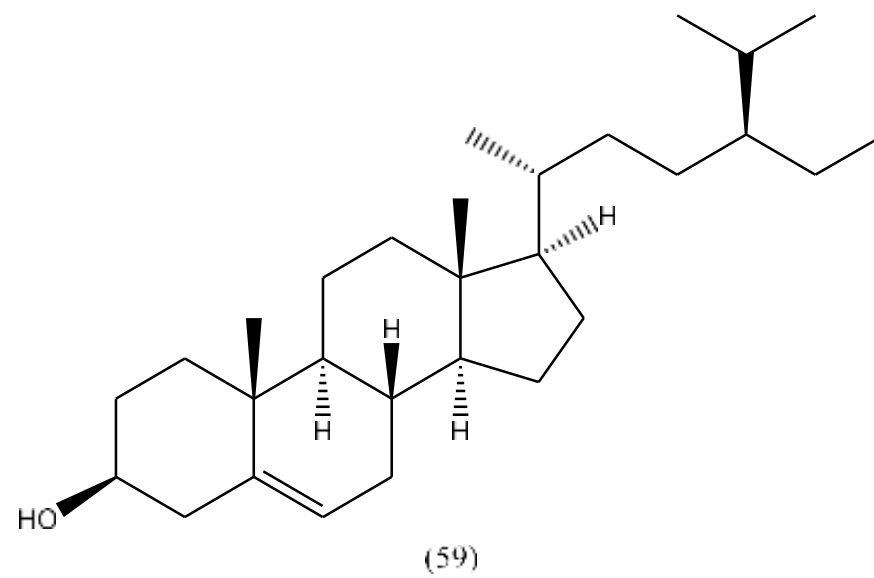
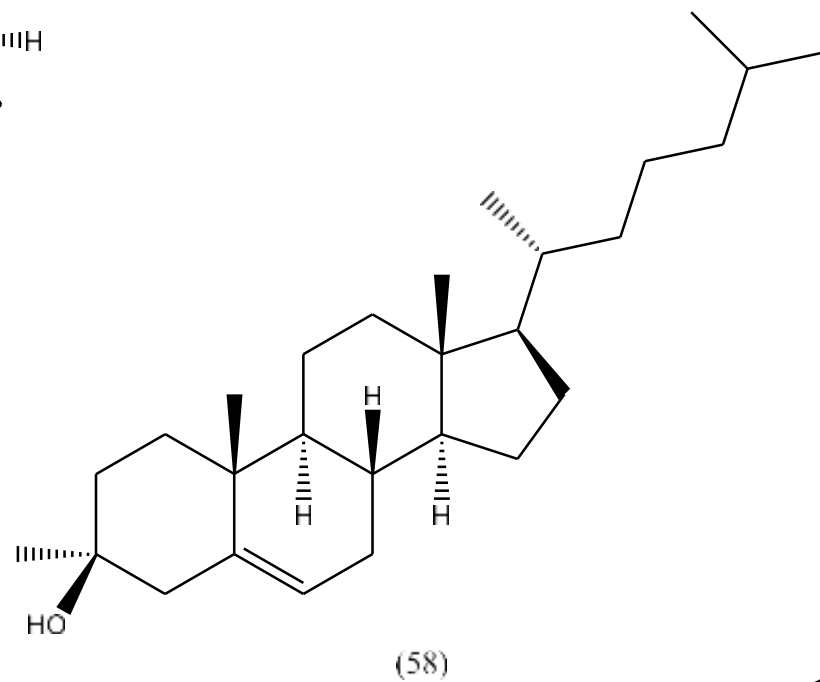
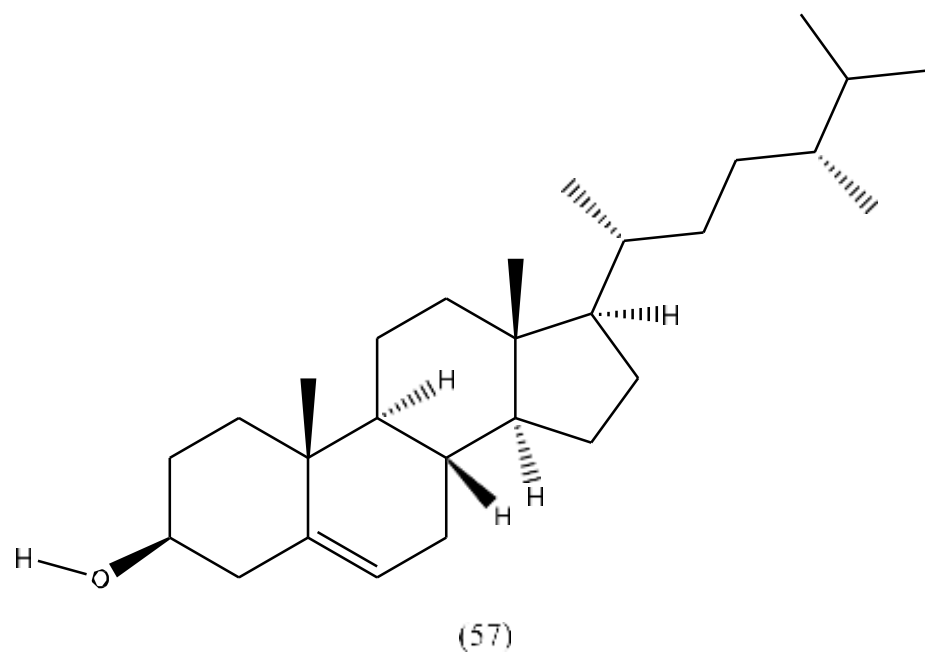
Supplementary Figure 5S. *Continued*



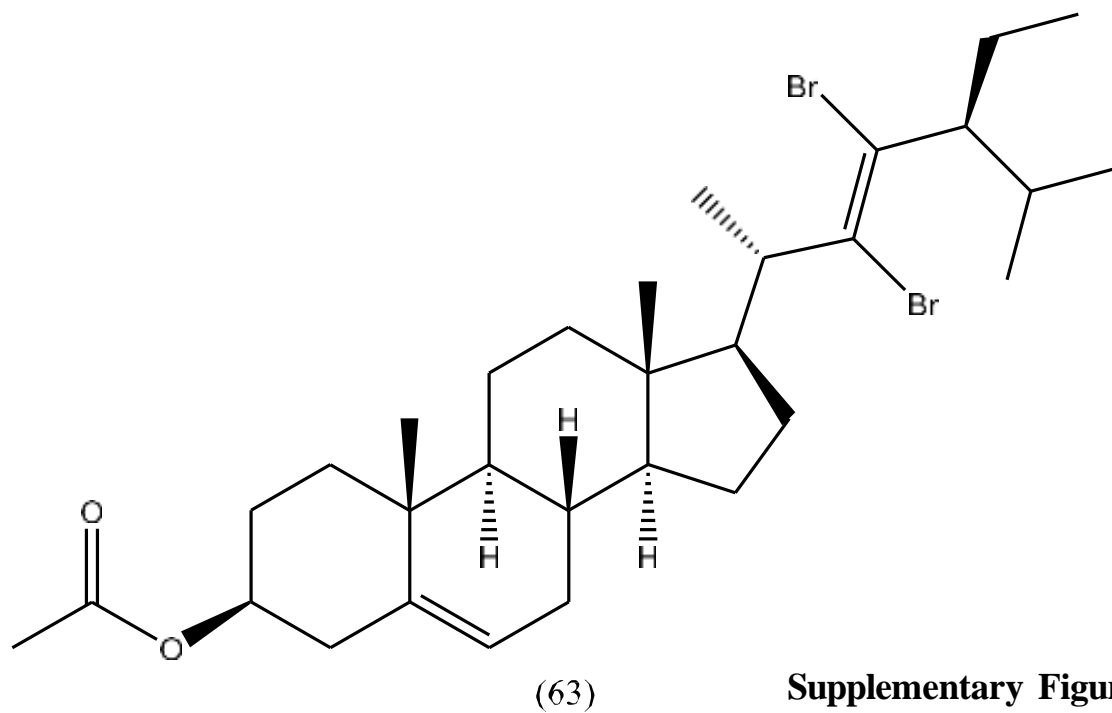
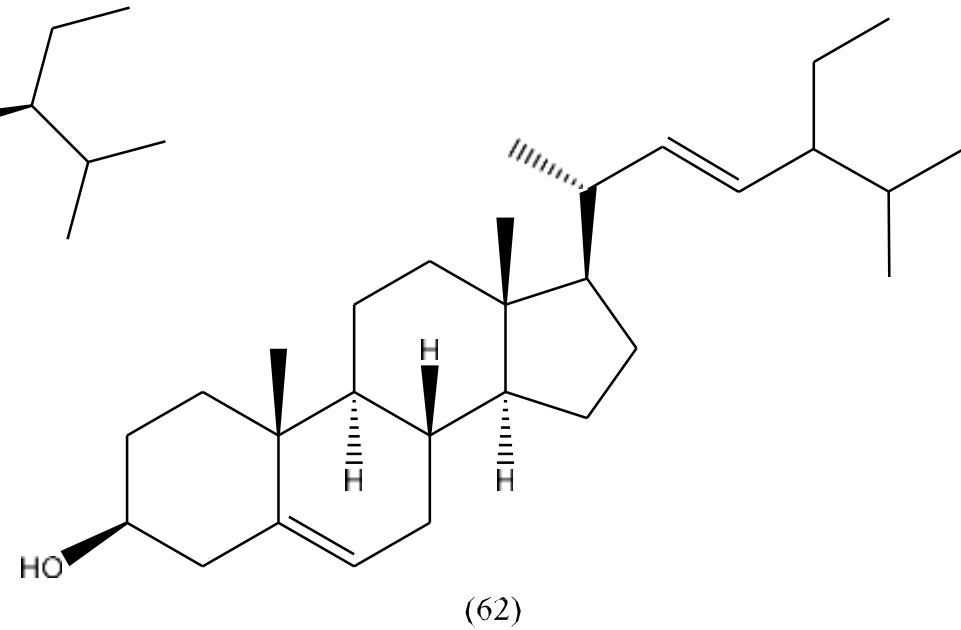
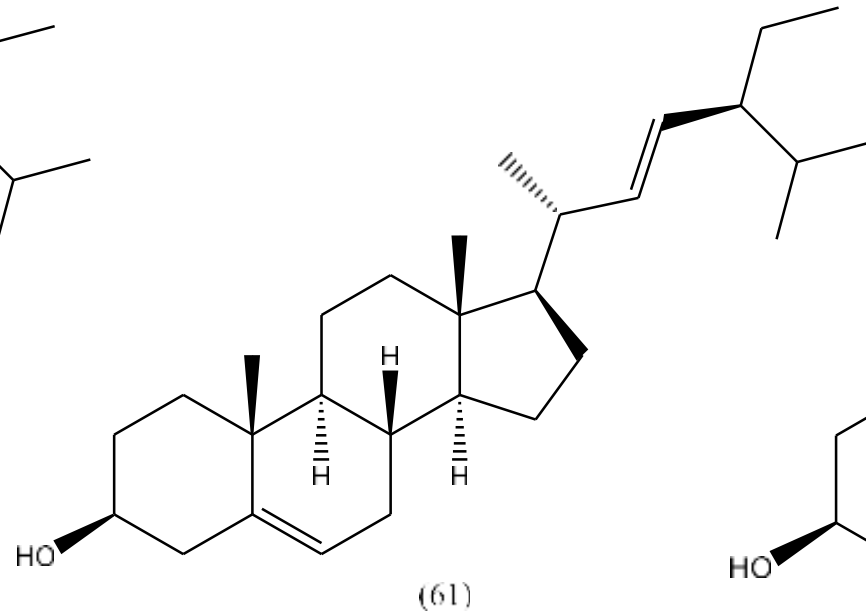
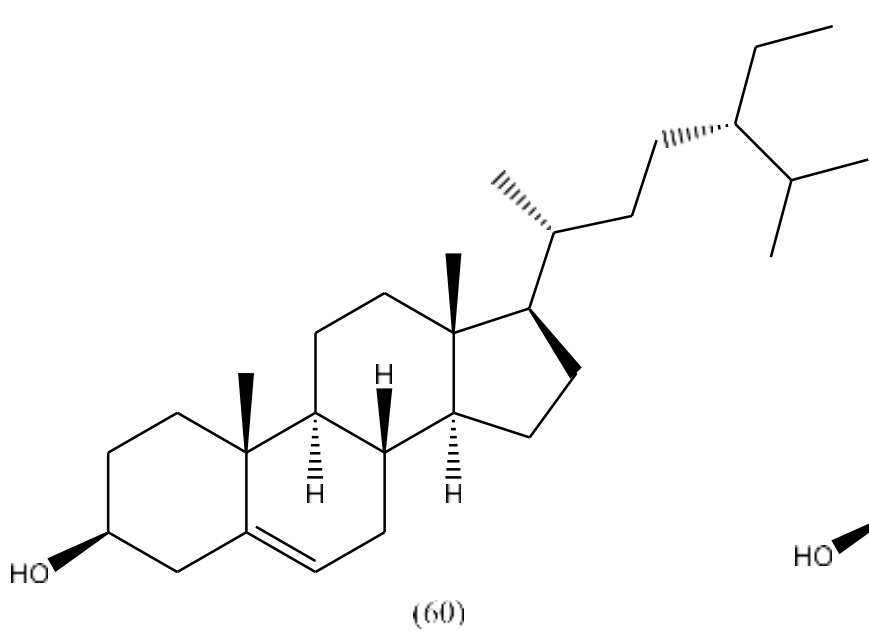
Supplementary Figure 5S. *Continued*



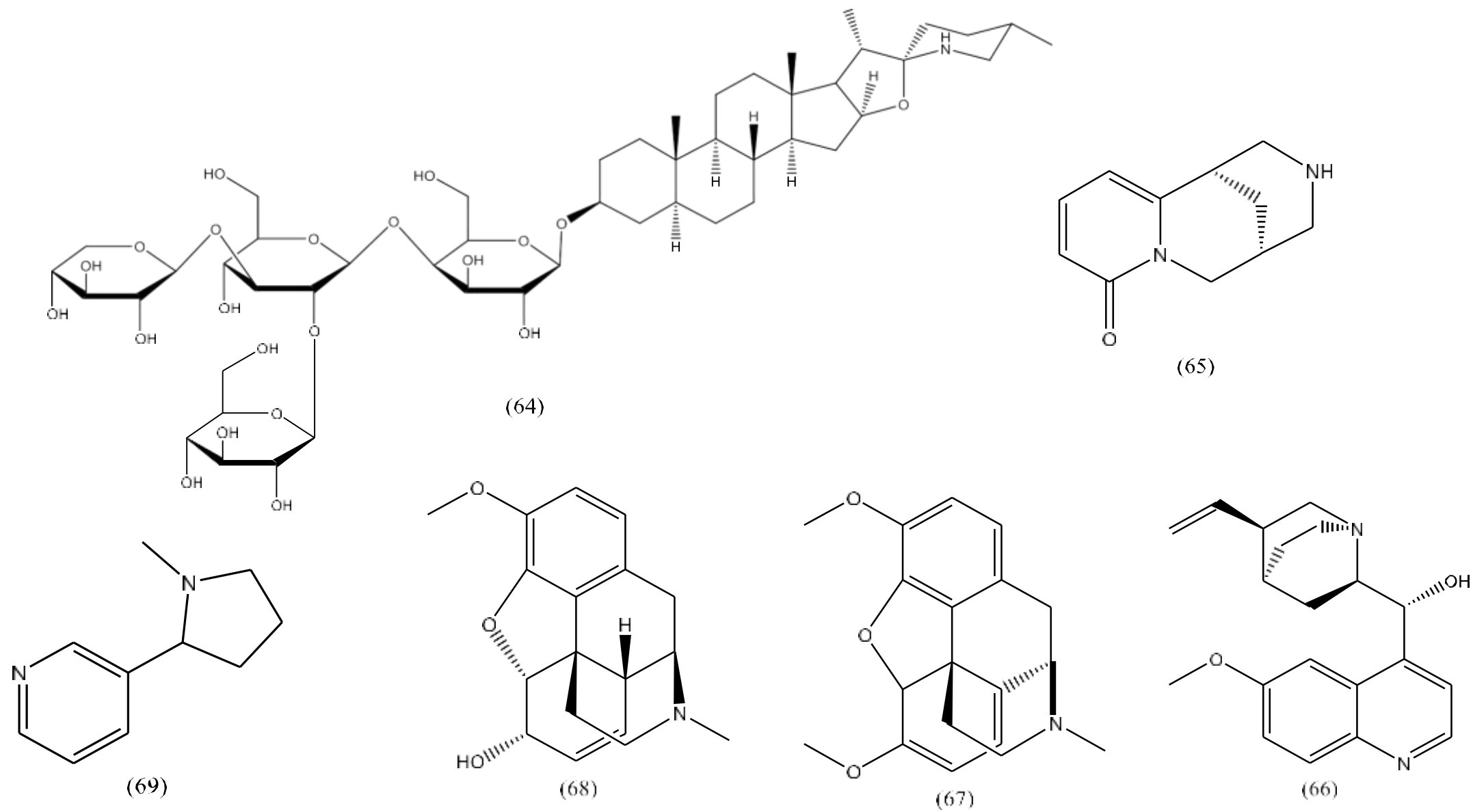
Supplementary Figure 6S. Structure of reported sterols from *E. crassipes*.



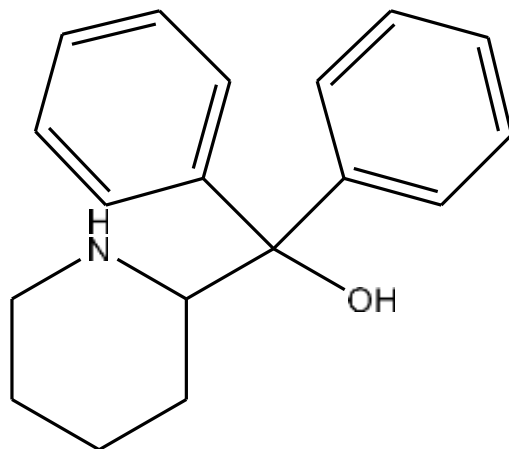
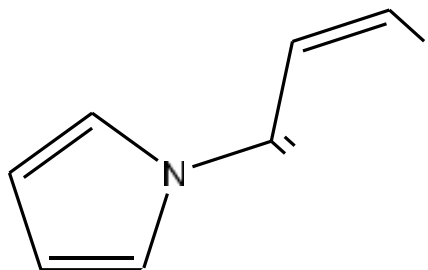
Supplementary Figure 6S. *Continued*



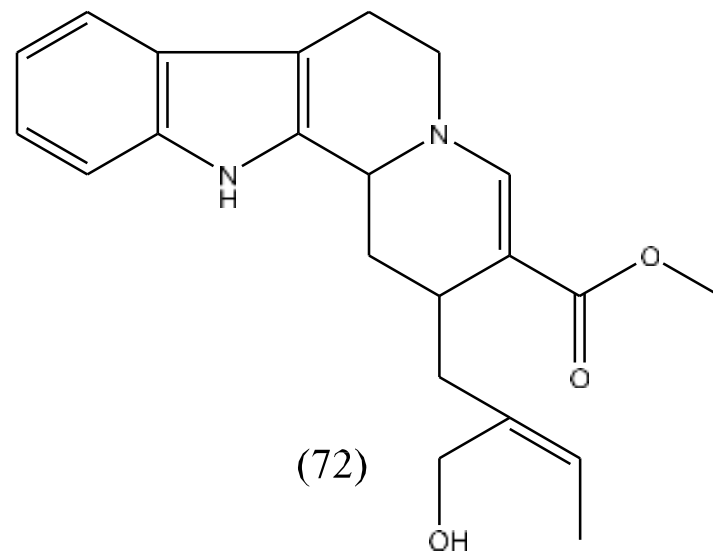
Supplementary Figure 6S. Continued



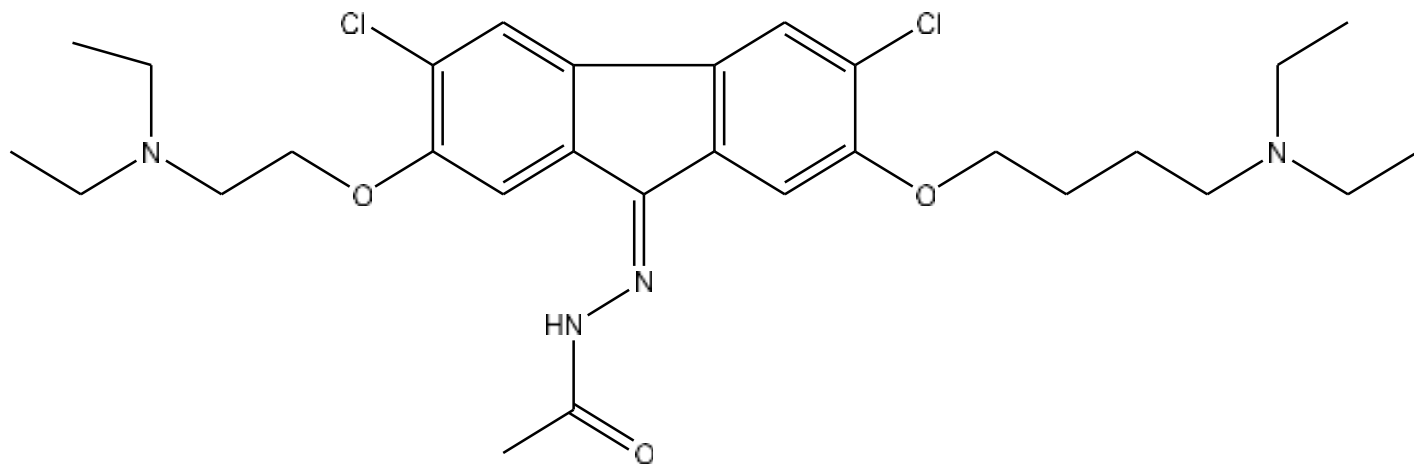
Supplementary Figure 7S. Structure of alkaloids from *E. crassipes*.



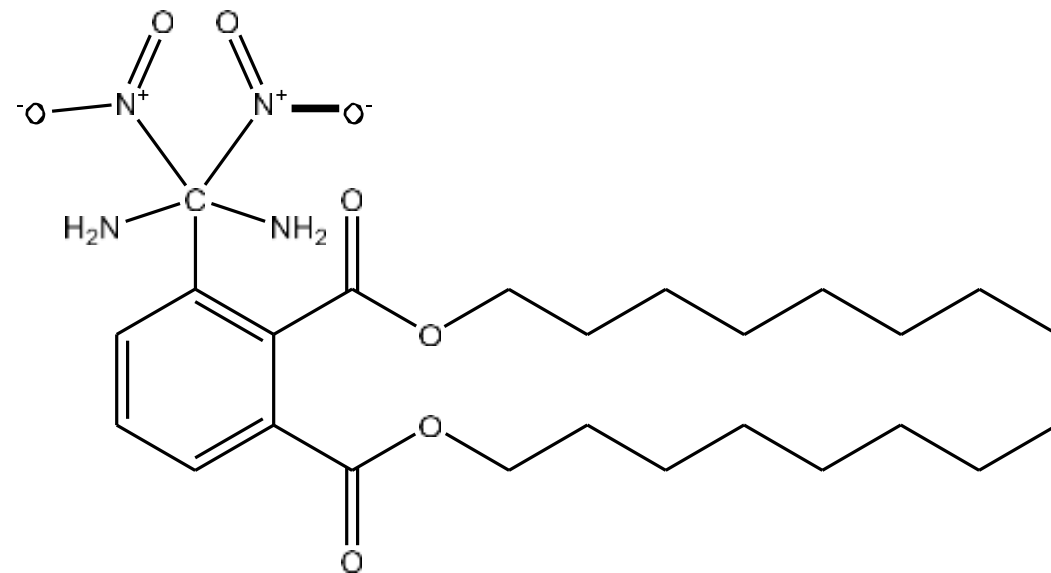
(71)



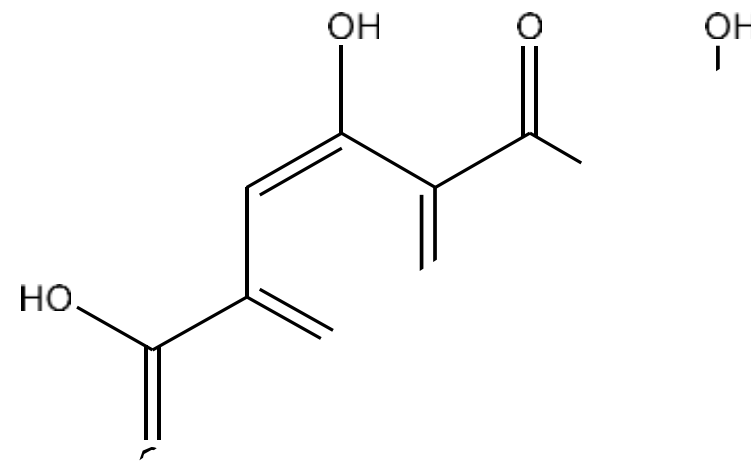
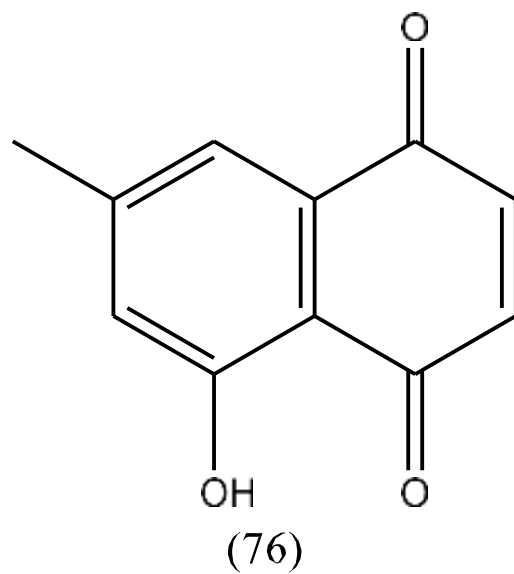
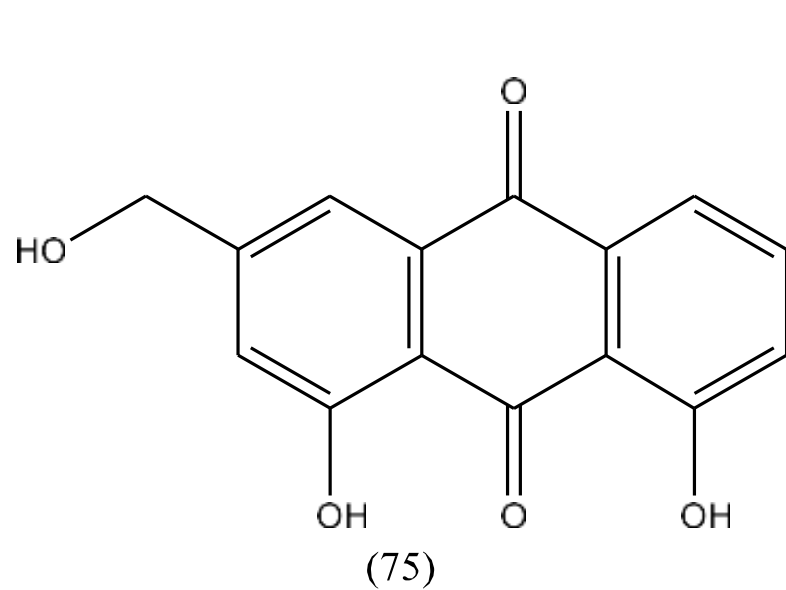
(72)



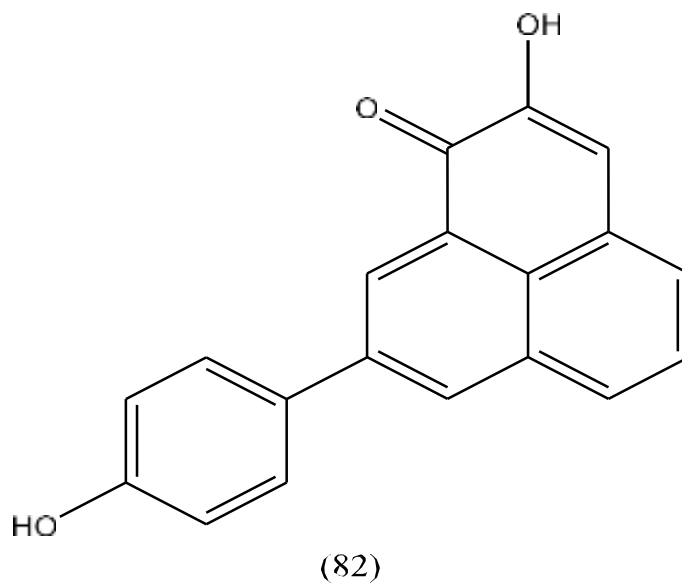
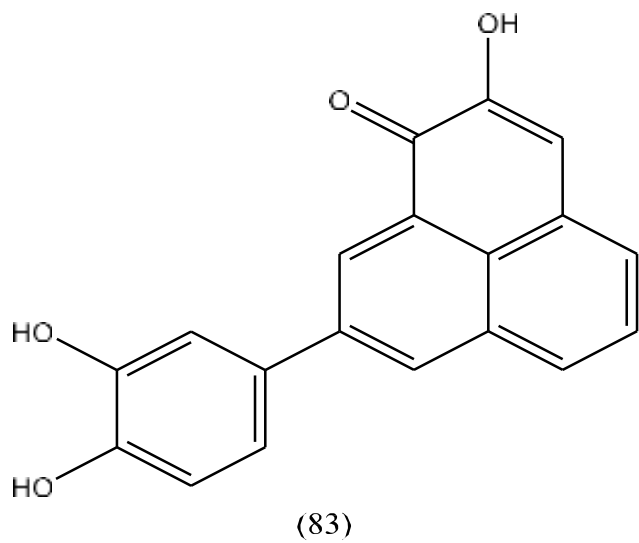
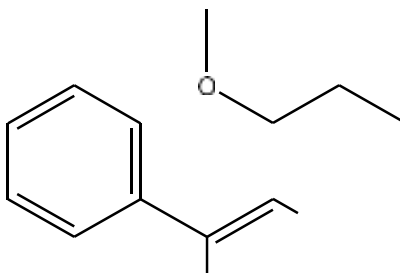
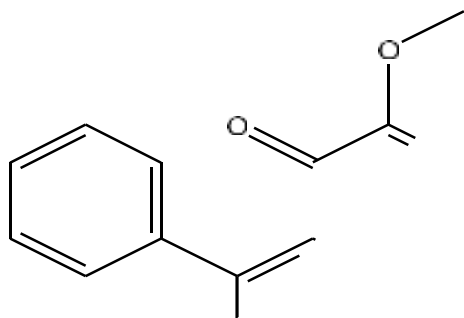
(73)



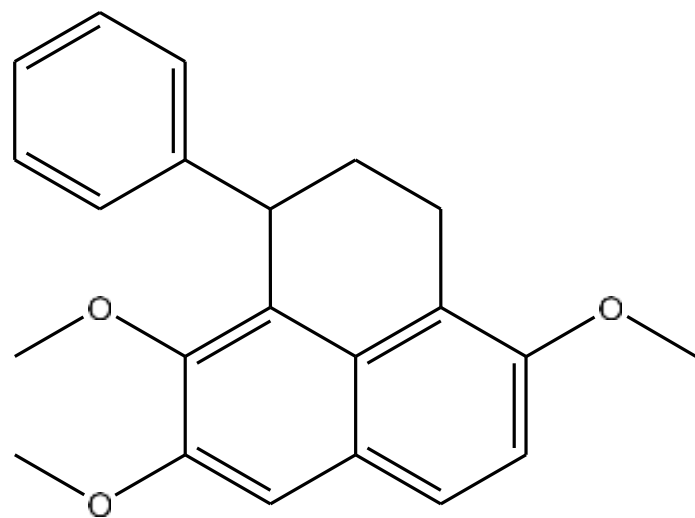
(74)



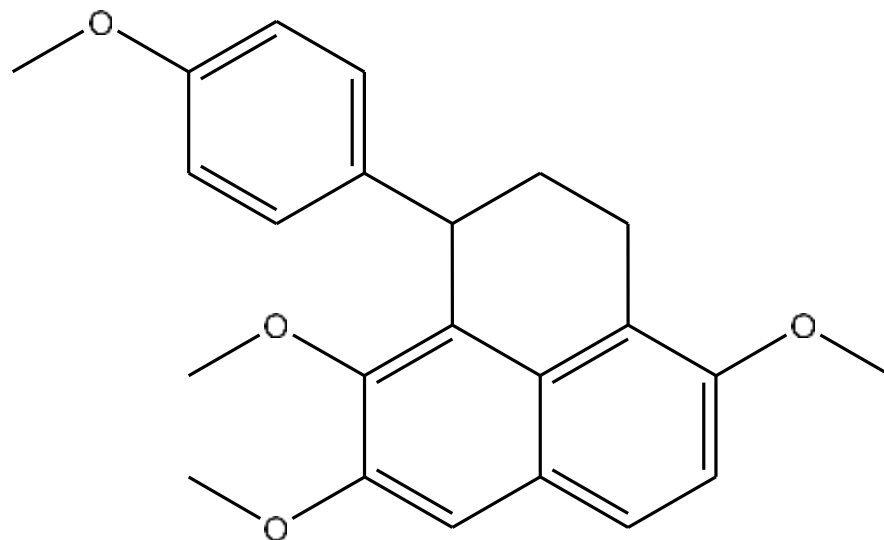
Supplementary Figure 8S. Structure of reported quinones from *E. crassipes*.



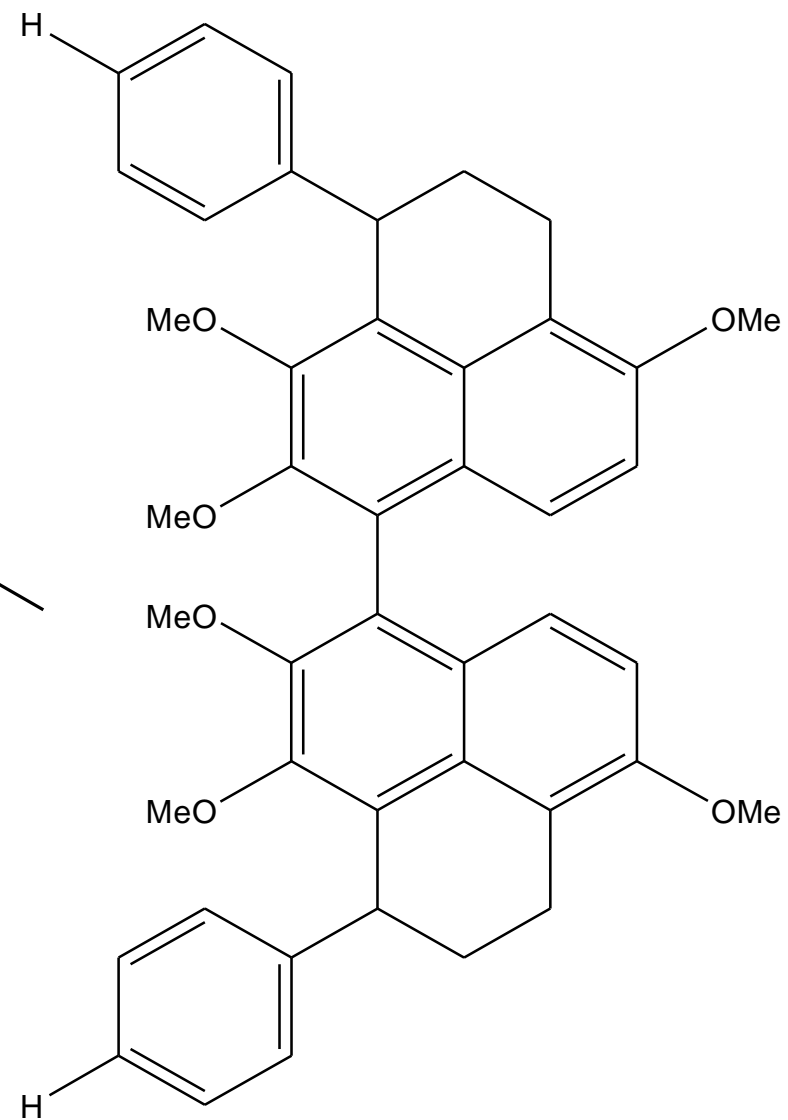
Supplementary Figure 9S. Structure of reported phenalene derivates from *E. crassipes*.



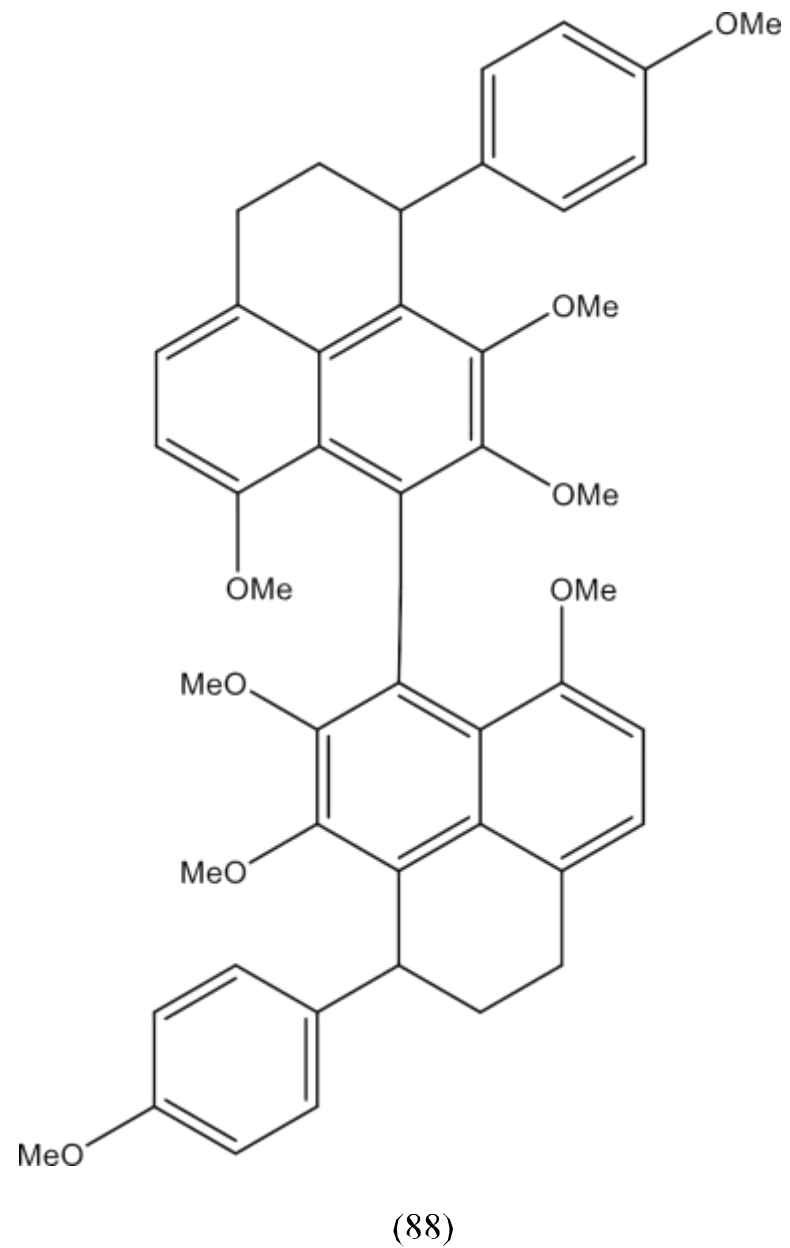
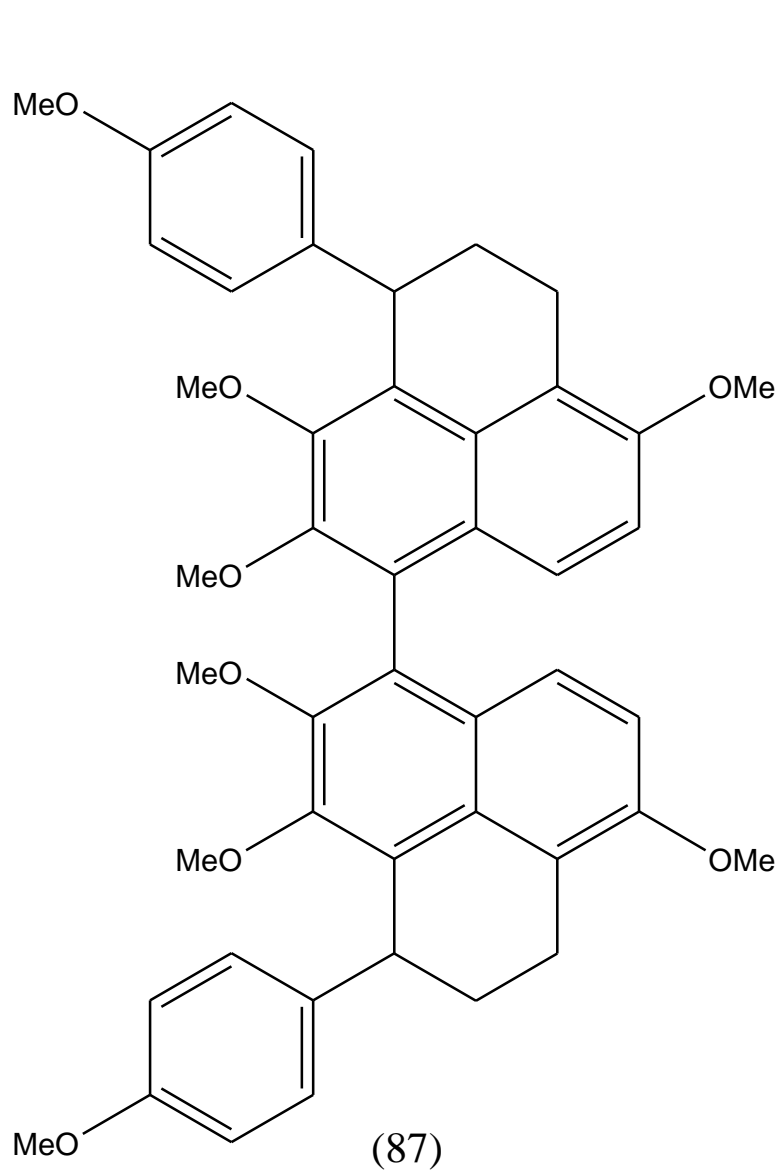
(84)



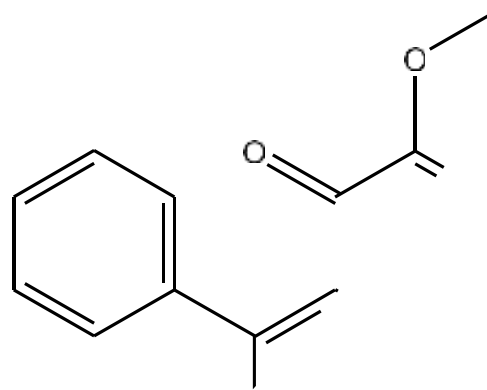
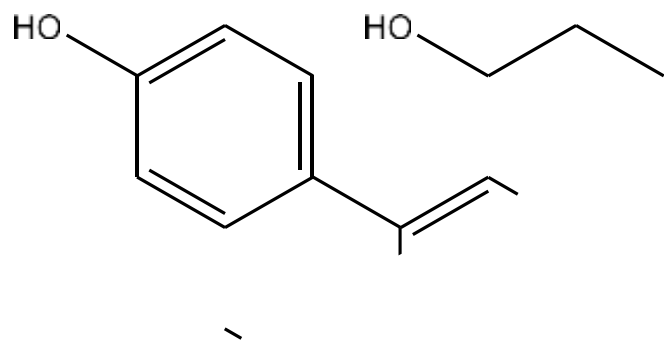
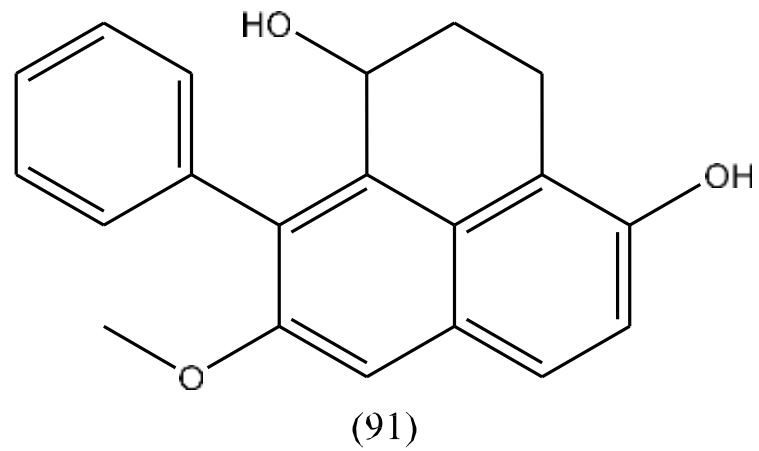
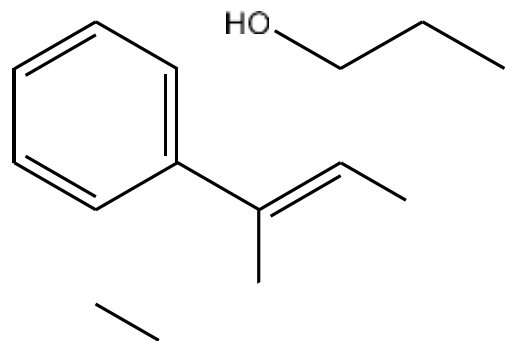
(85)



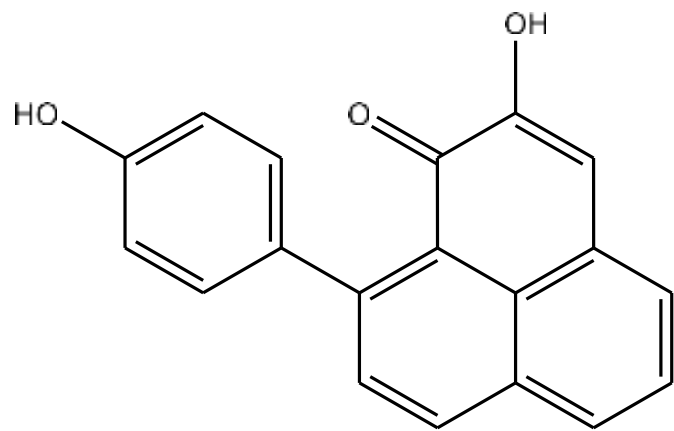
(86)



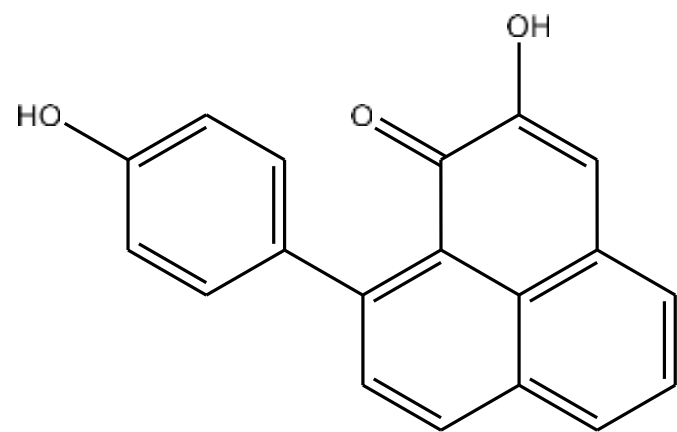
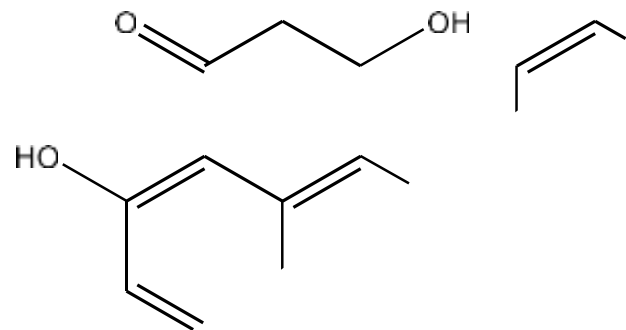
Supplementary Figure 9S. *Continued.*



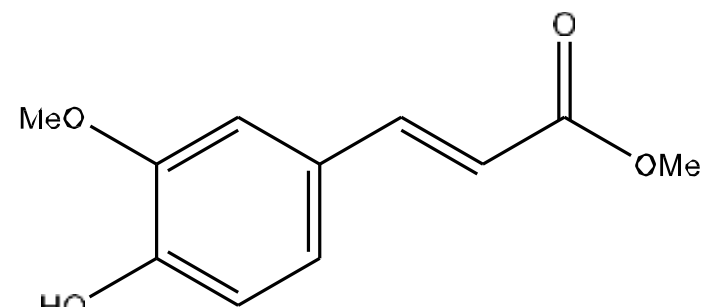
Supplementary Figure 9S. *Continued.*



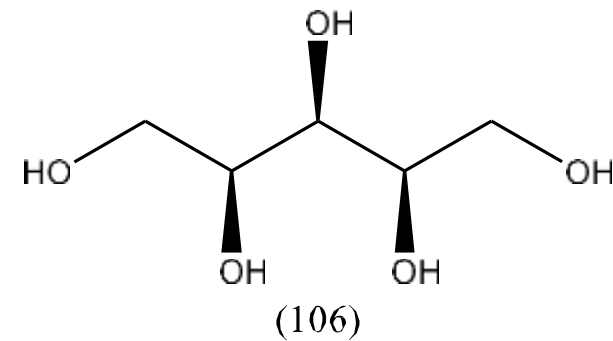
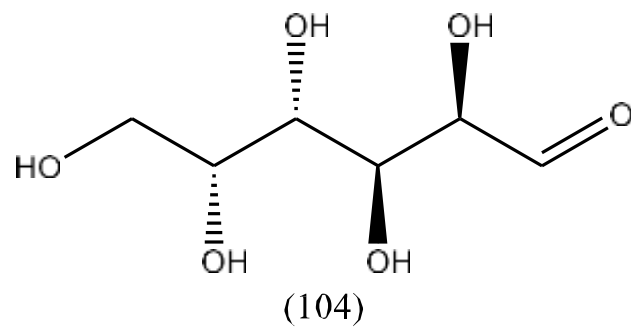
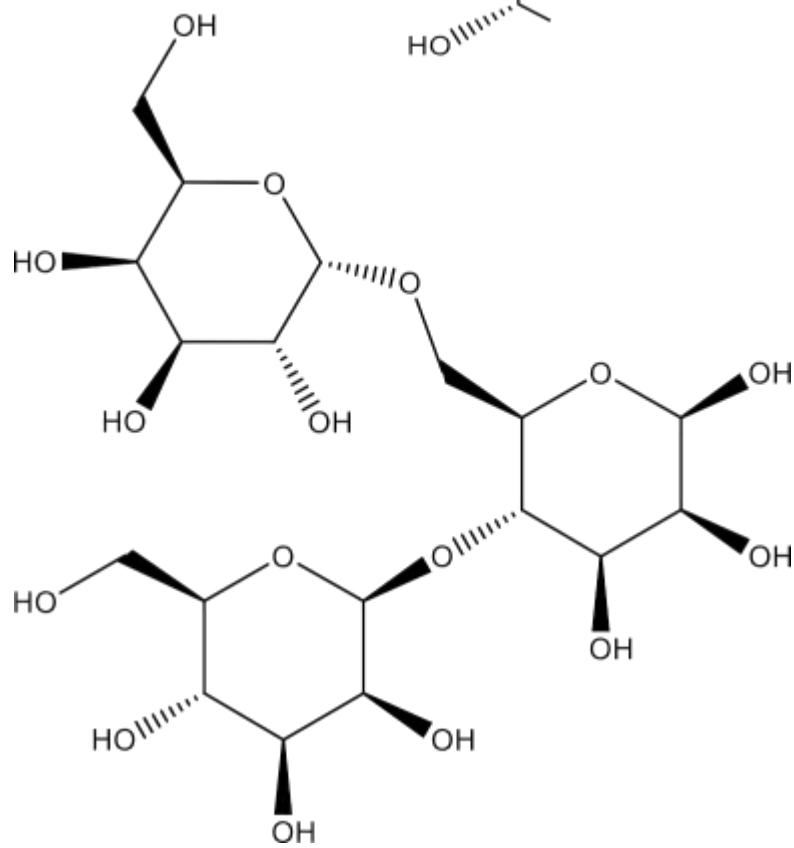
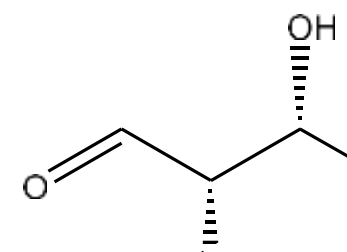
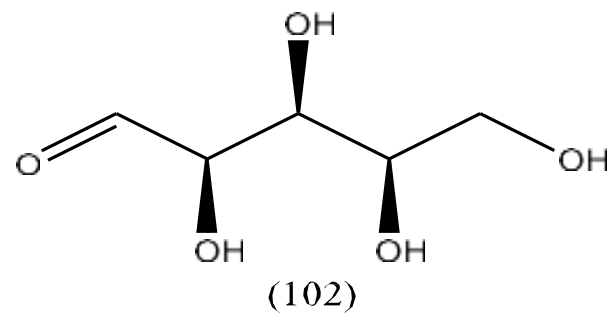
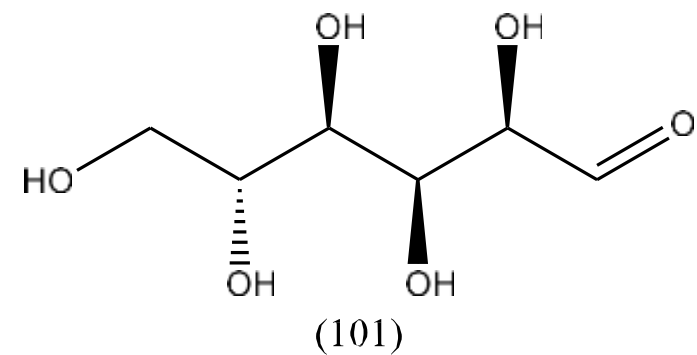
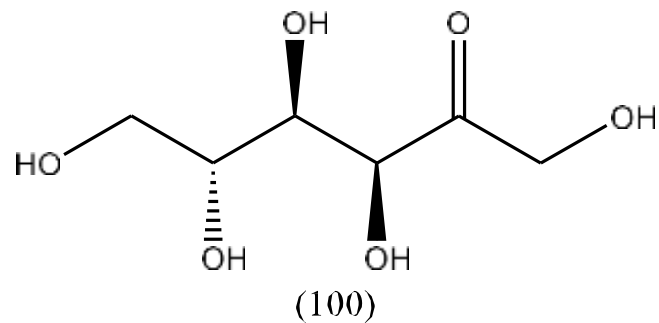
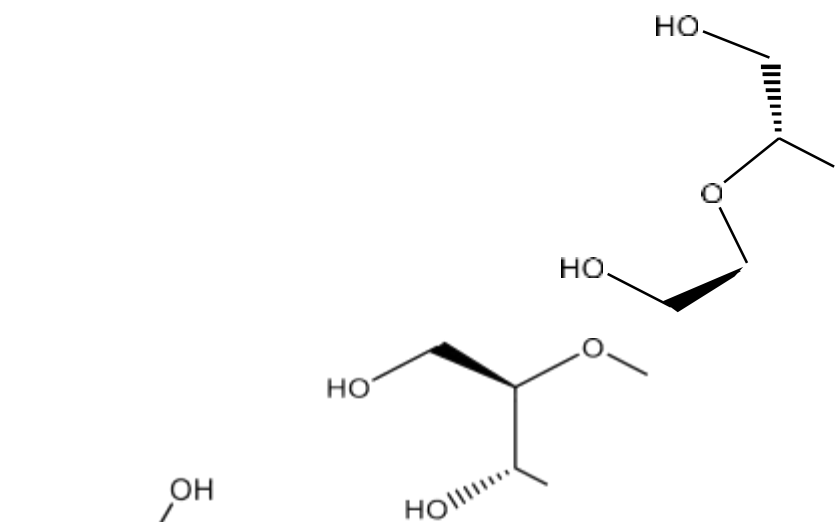
(94)



(97)

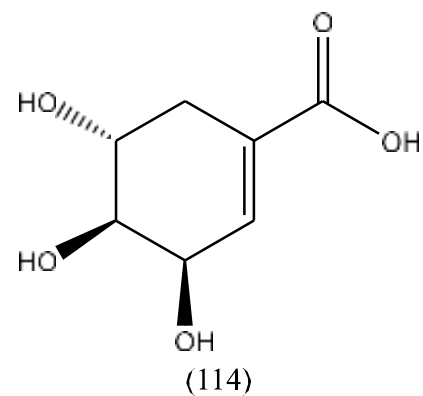
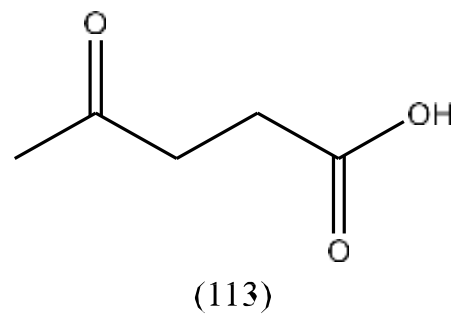
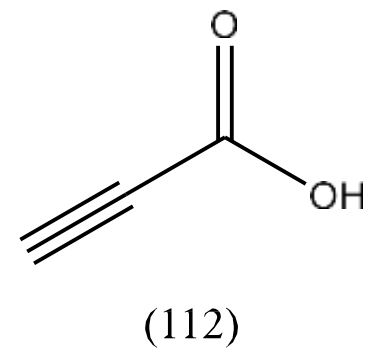
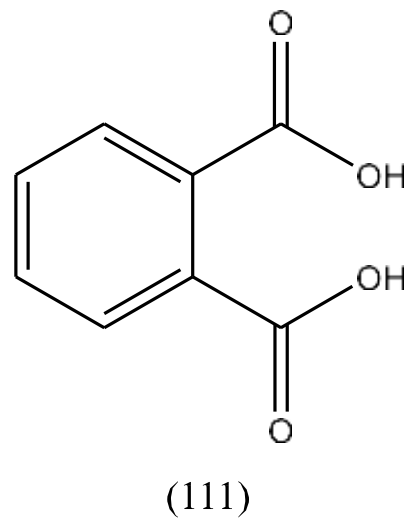
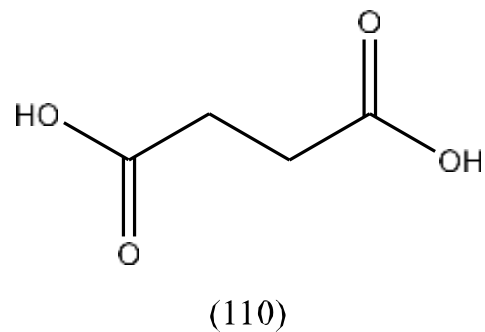
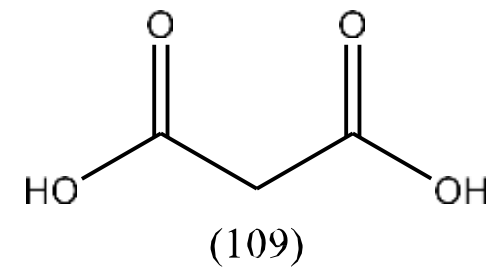
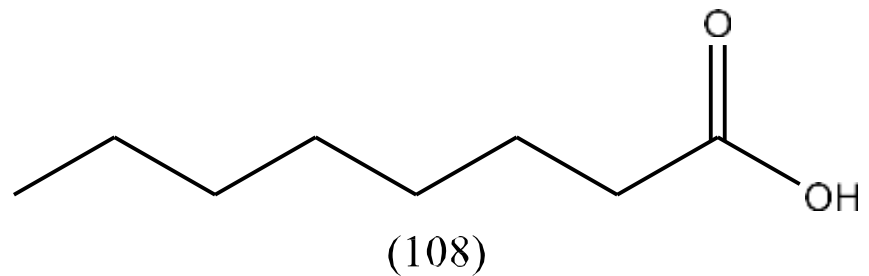
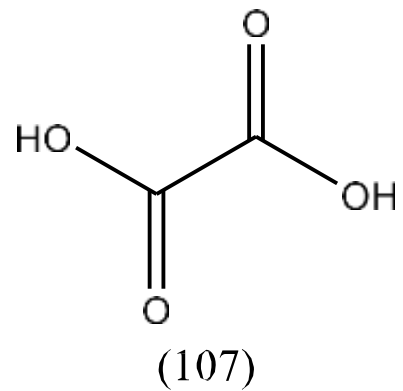


(98)

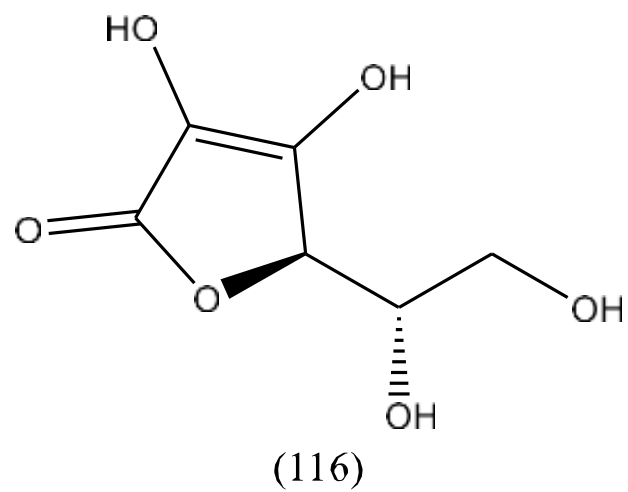
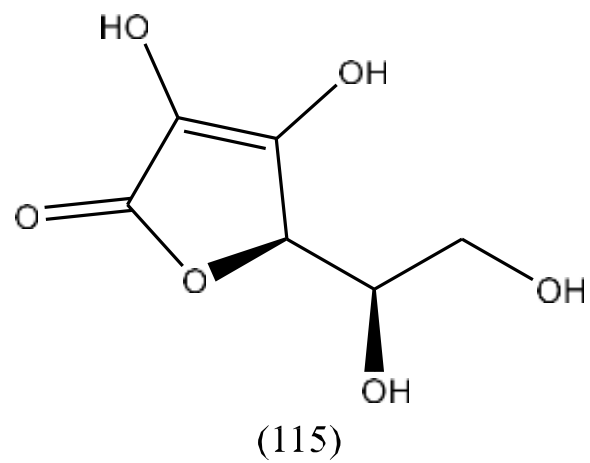


(105)

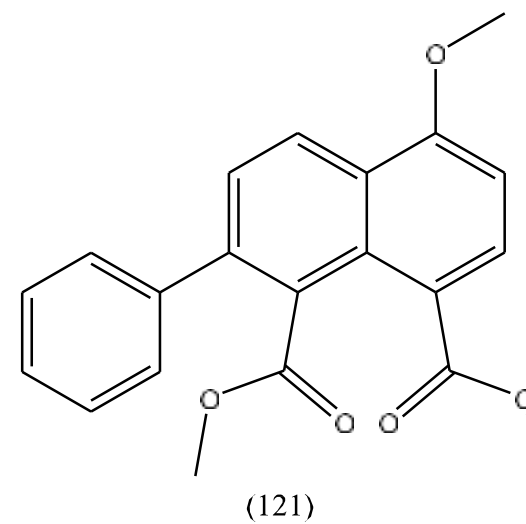
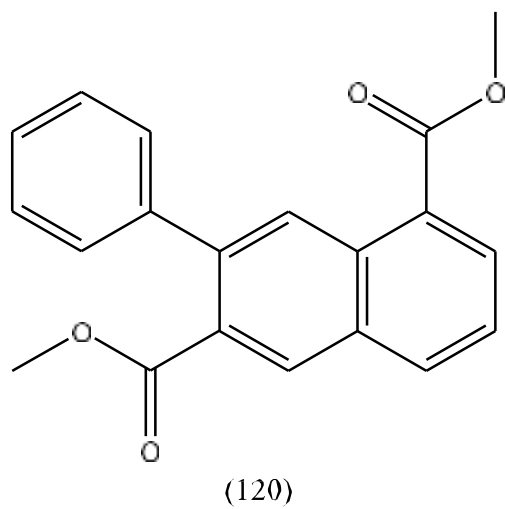
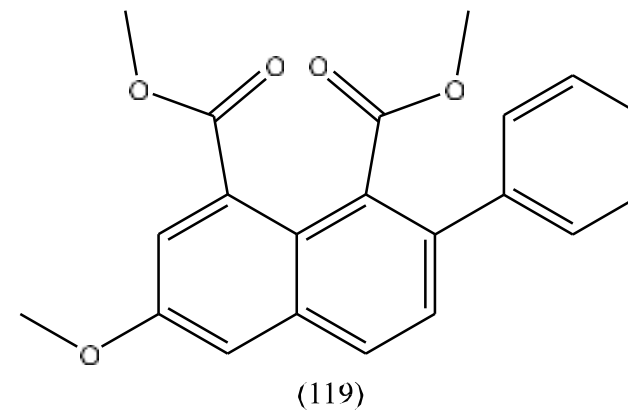
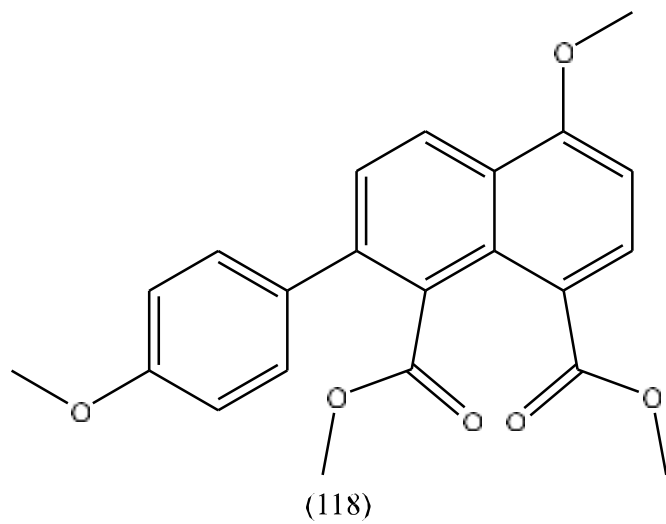
Supplementary Figure 10S. Structure of reported carbohydrates from *E. crassipes*.



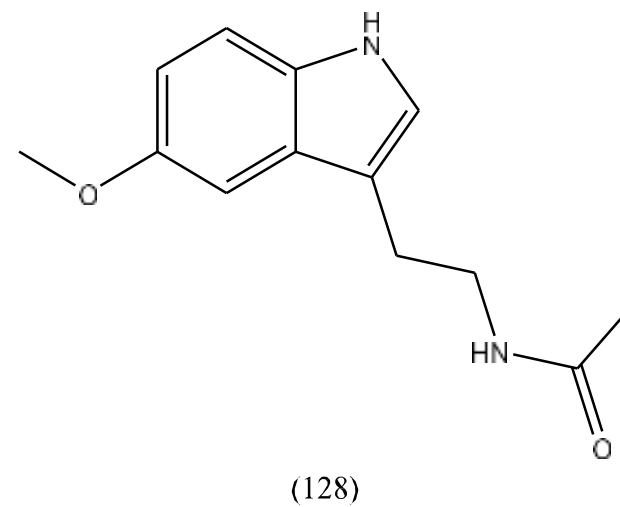
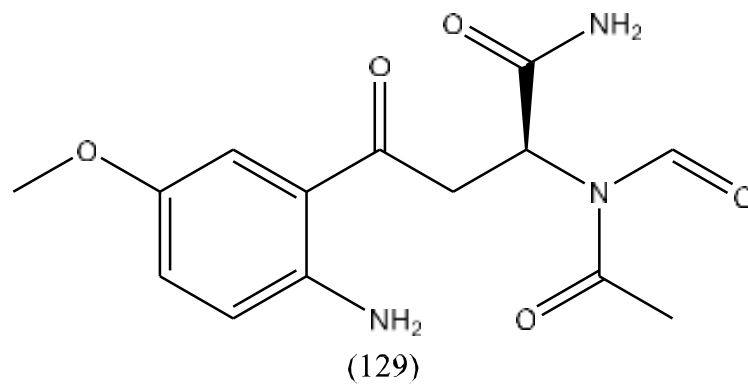
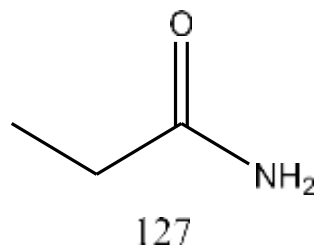
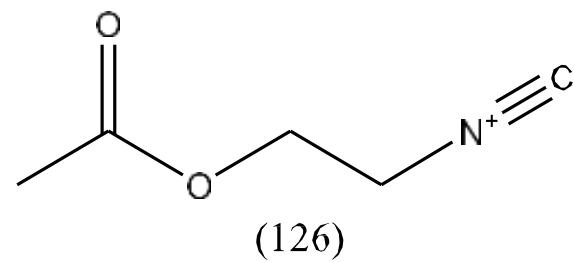
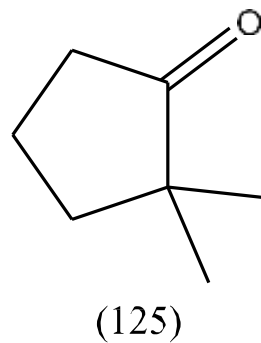
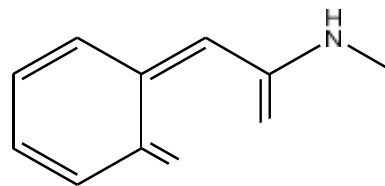
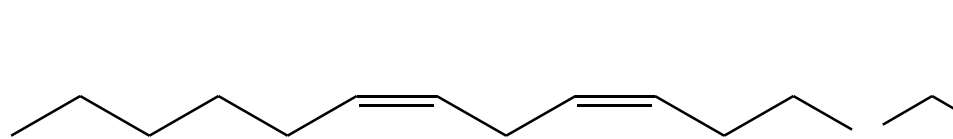
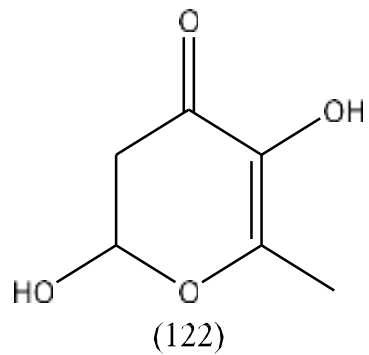
Supplementary Figure 11S. Structure of reported organic acids from *E. crassipes*.



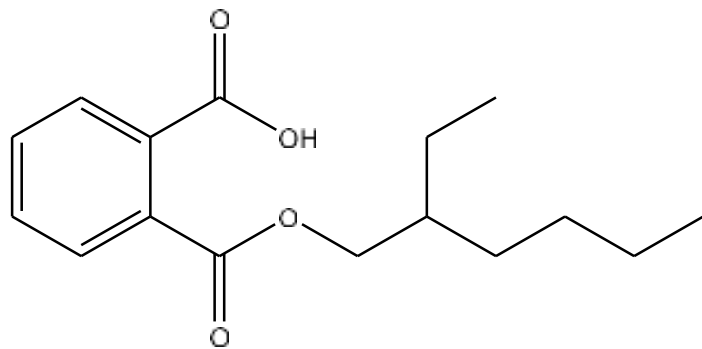
Supplementary Figure 11S. *Continued.*



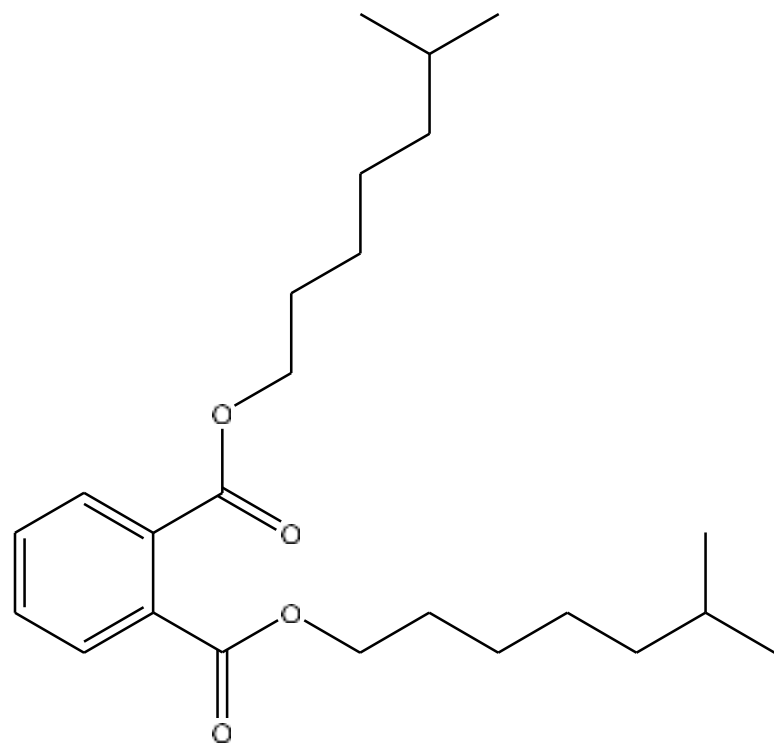
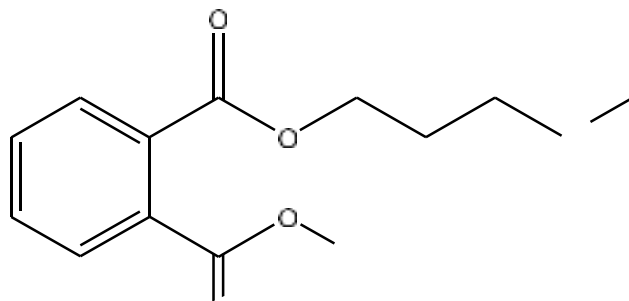
Supplementary Figure 12S. Structure of other compounds reported from *E. crassipes*.



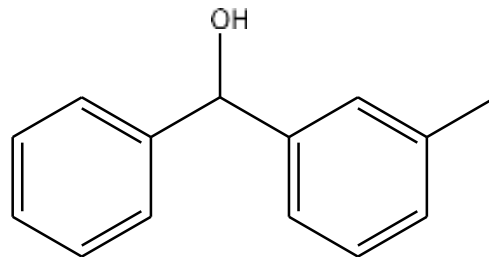
Supplementary Figure 12S. Structure of other compounds reported from *E. crassipes*.



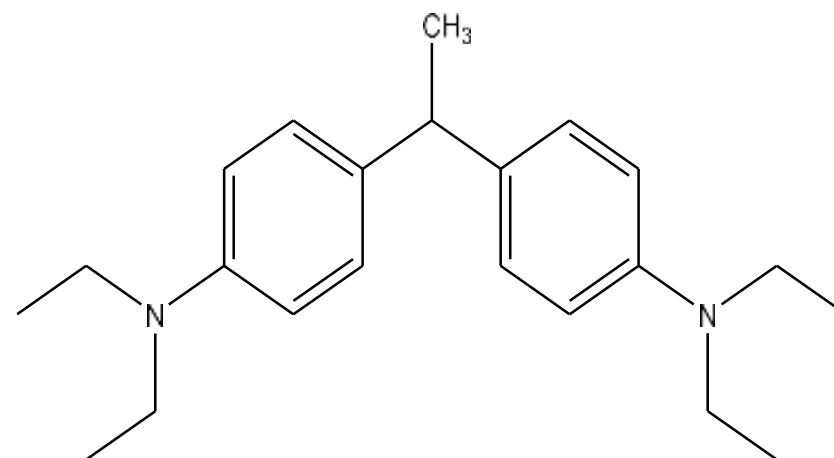
(130)



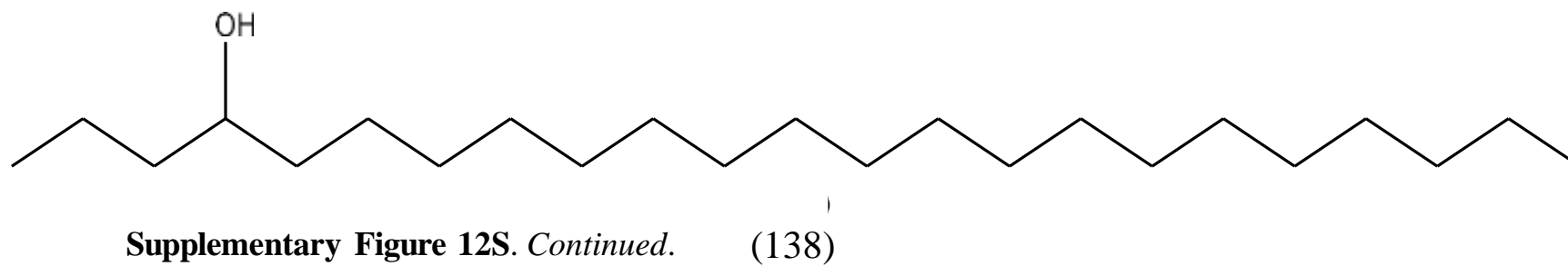
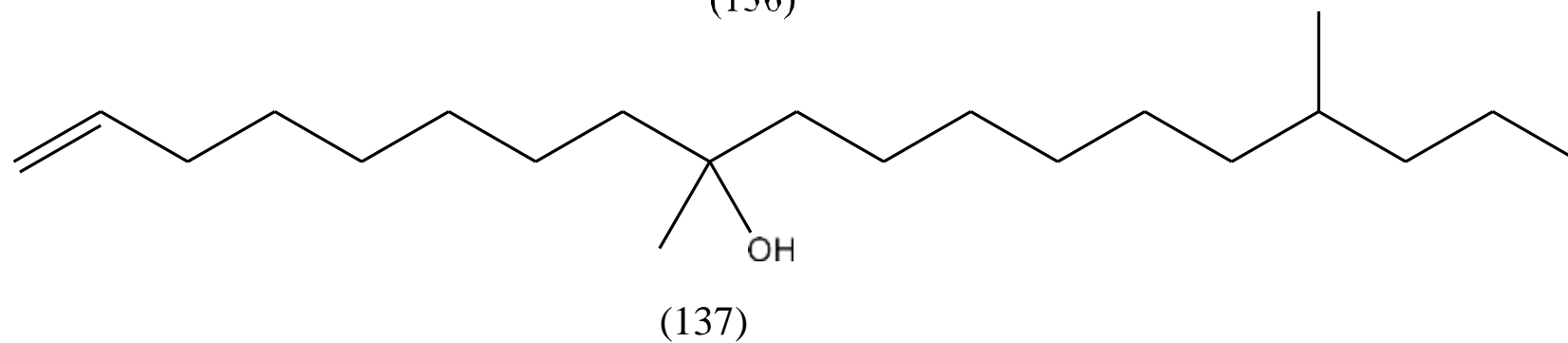
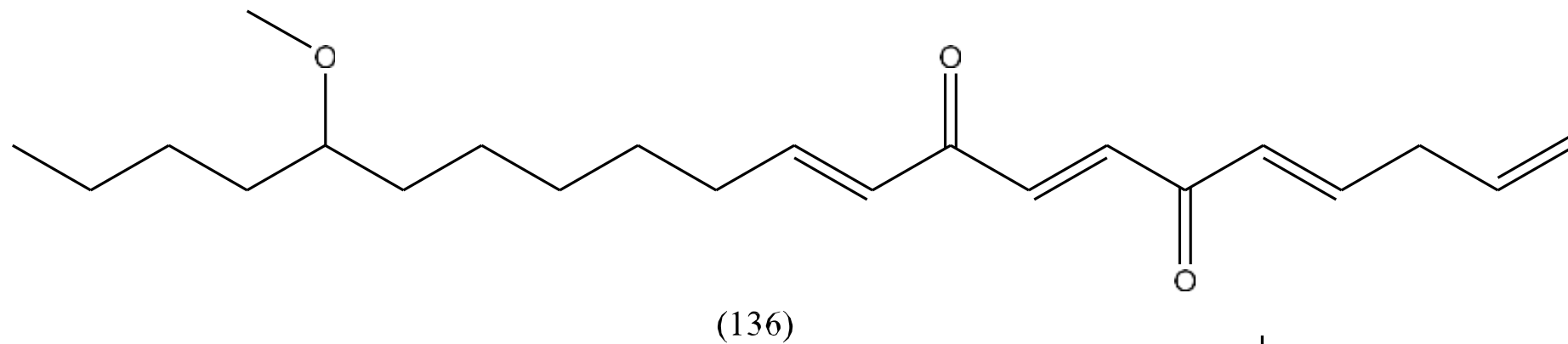
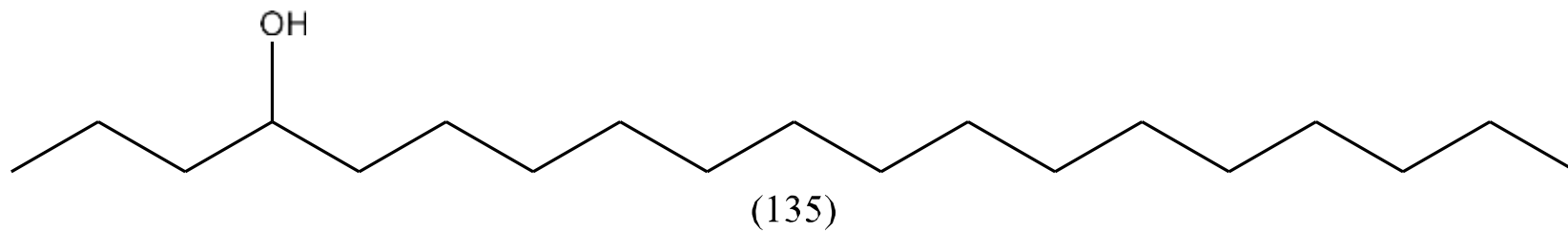
(132)

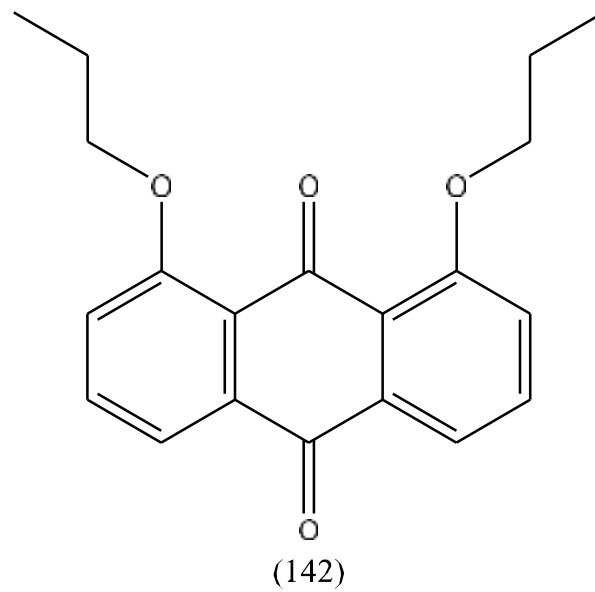
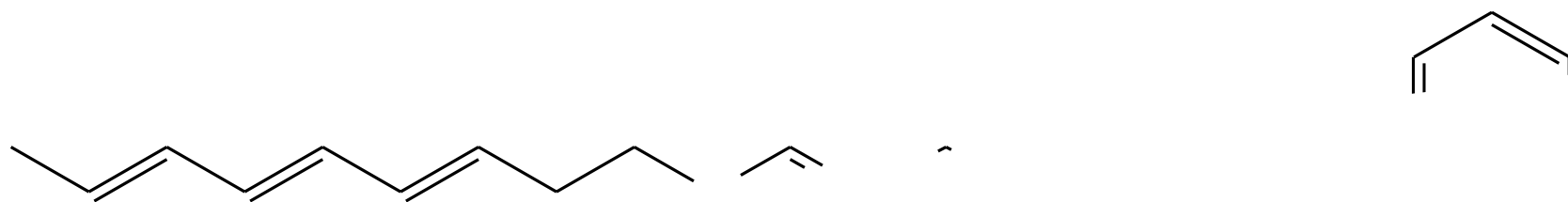
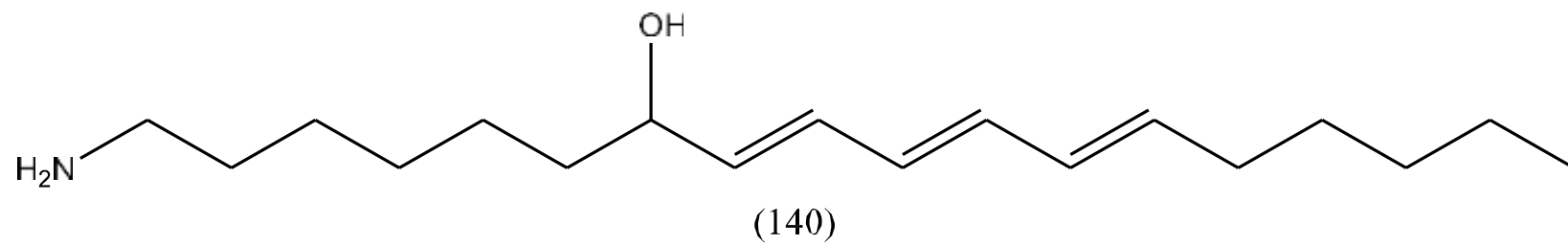


(133)

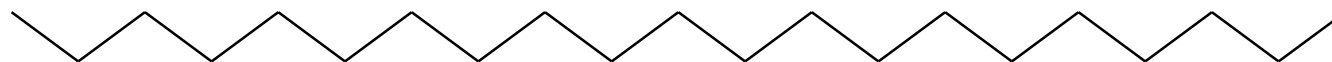


(134)

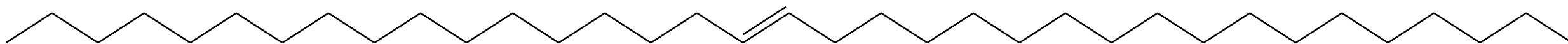




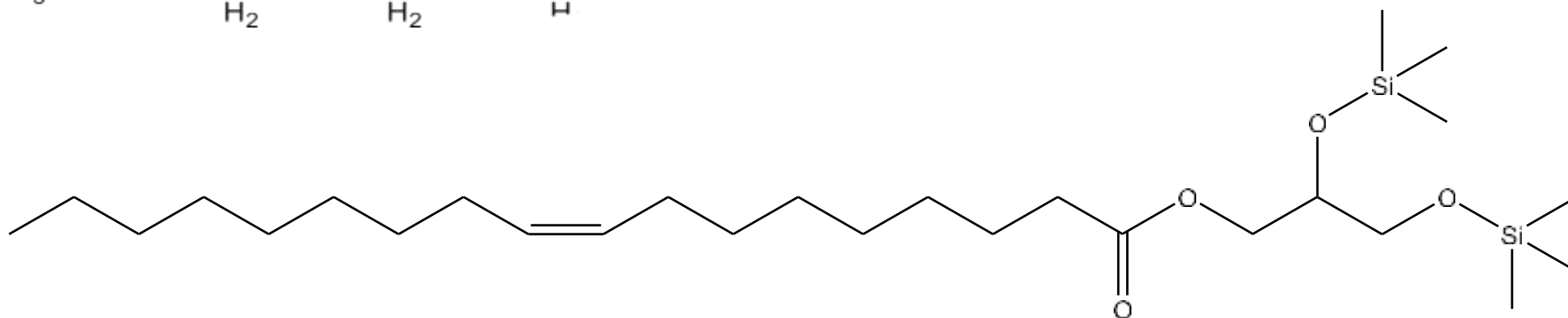
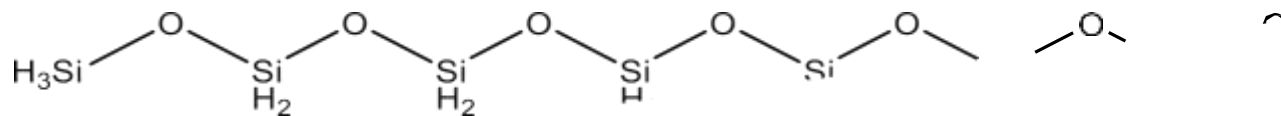
Supplementary Figure 12S. *Continued.*



(145)



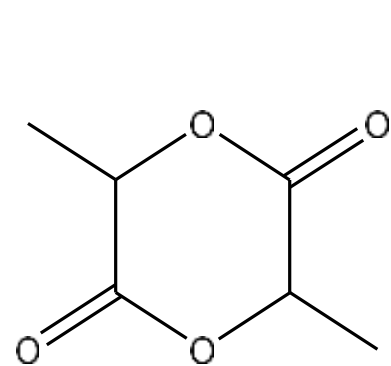
(146)



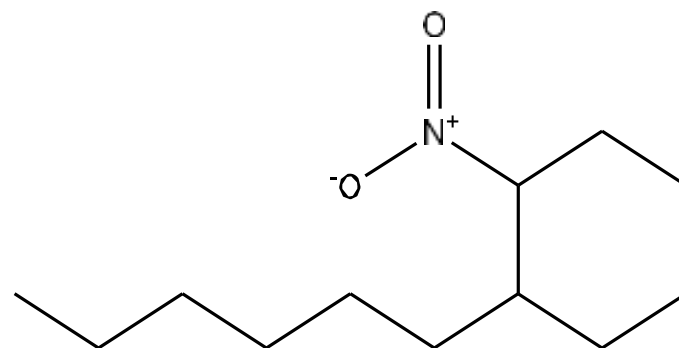
(148)



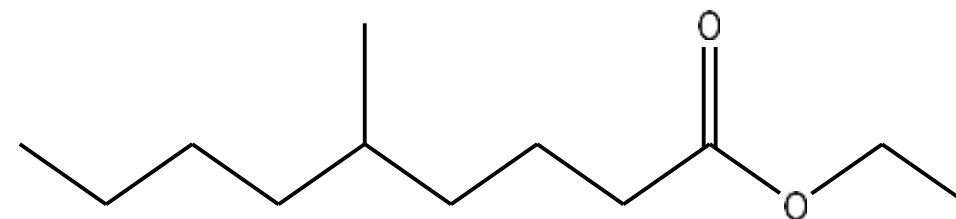
(149)



(152)



(153)



(154)