

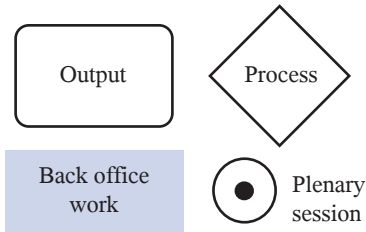
Setting performance indicators for coastal Marine Protected Areas (MPAs)

This is the workflow diagram of the expert-based process, especially designed for this paper.

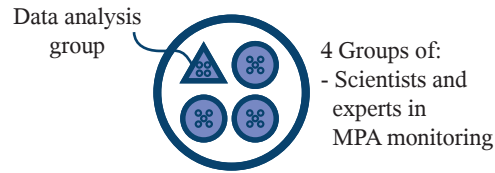
Overarching goal: to define a manageable core list of MPA performance indicators, their survey methods and minimum monitoring frequencies.

Main outputs: (1) participants agreed on a core list of MPA performance indicators, (2) grouped indicators by priority level, (3) defined monitoring/reporting frequencies and survey methods.

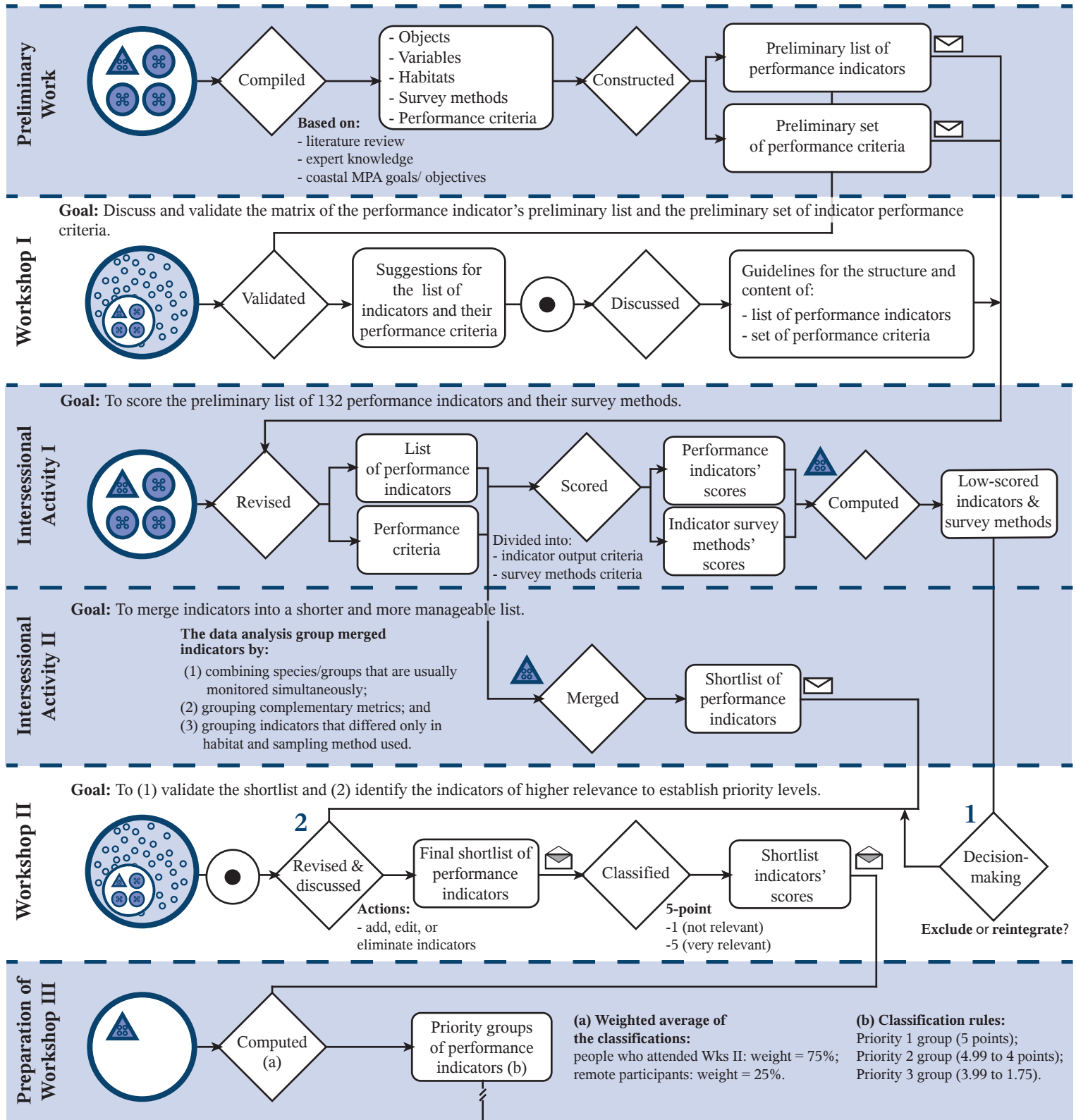
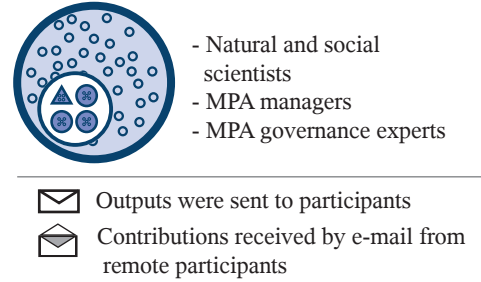
Legend:



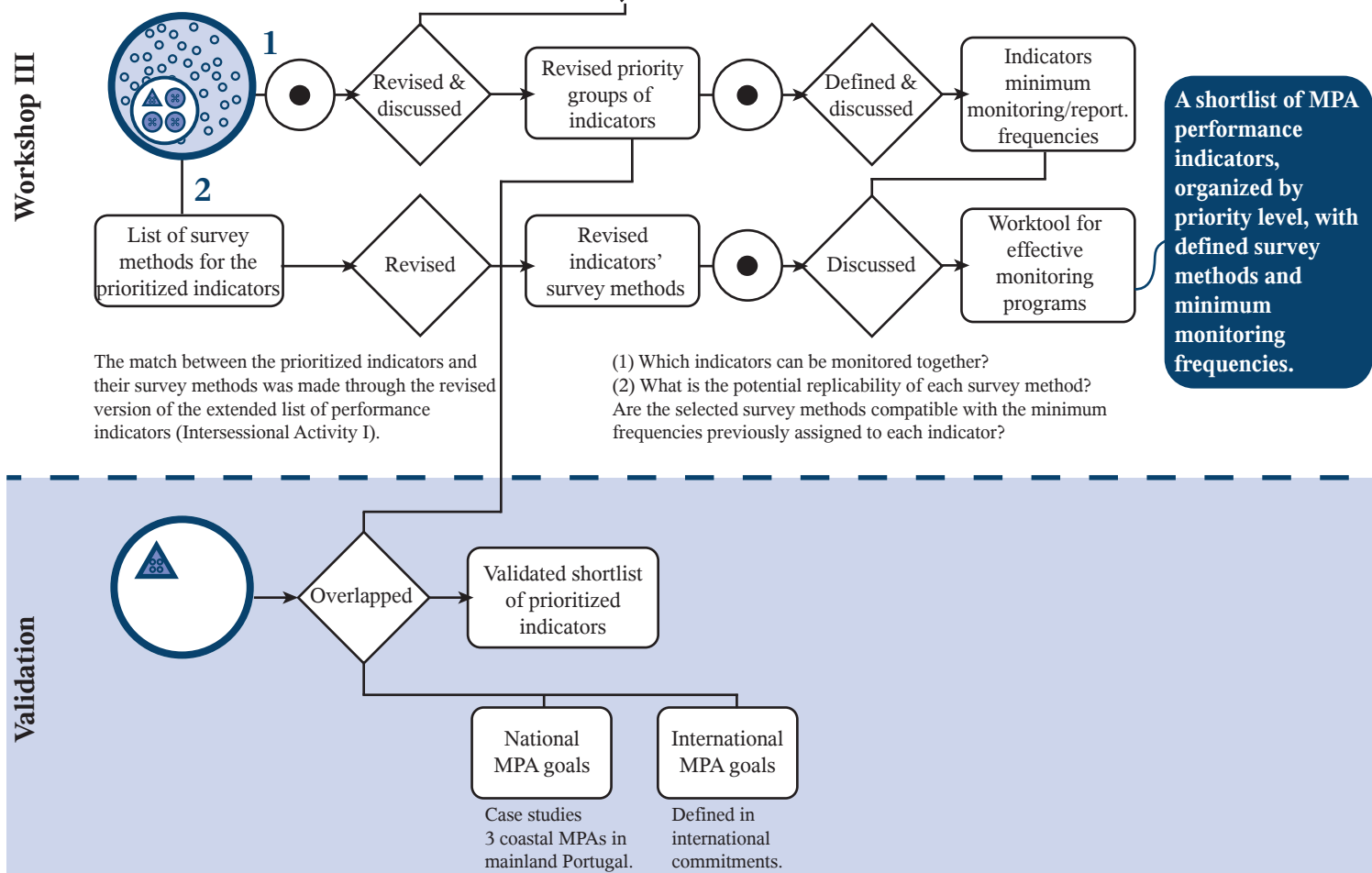
Organizing Team



Workshop participants



Goal: To: (1) validate the priority groups resulting from Workshop II; (2) define minimum monitoring frequencies for each prioritized indicator ; and (3) review the adequacy of survey methodologies previously considered for the indicators by matching indicators' minimum monitoring frequencies with the survey methods' possible implementation frequencies (using the existing resources).



Supplementary Figure 1. Workflow diagram of the expert-based process.