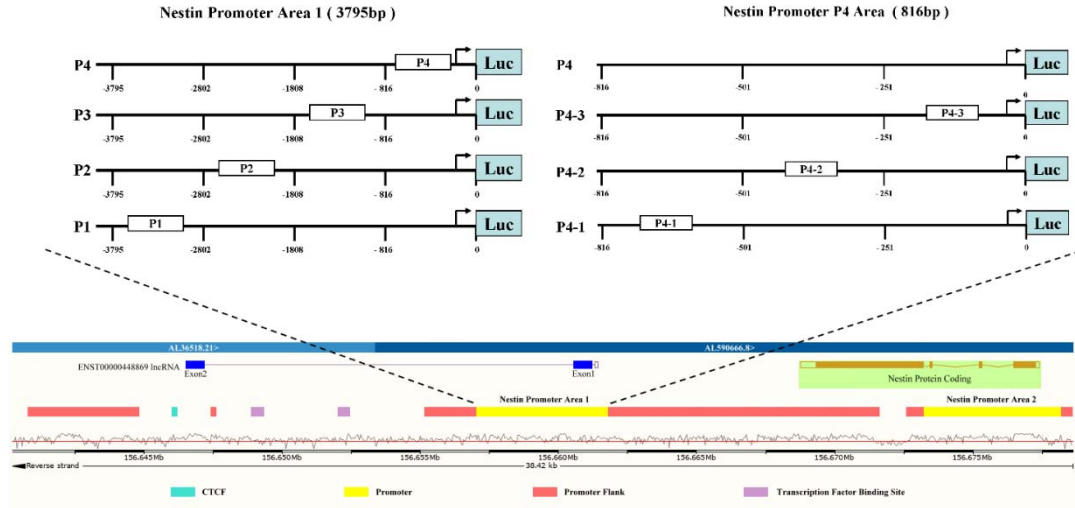


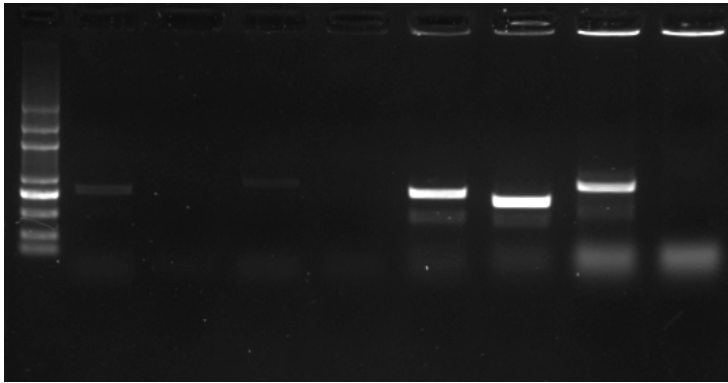
Nestin Promoter Fragment Cloning for Luciferase Assay

1. Fragment PCR Amplification from Genomic DNA

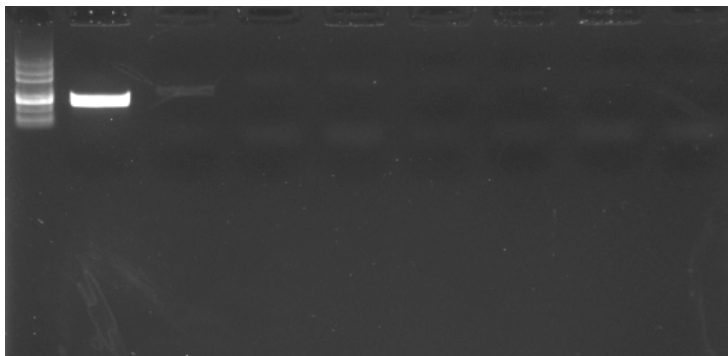
(Primers containing PmeI and NotI enzyme site)



P1 P2 P3



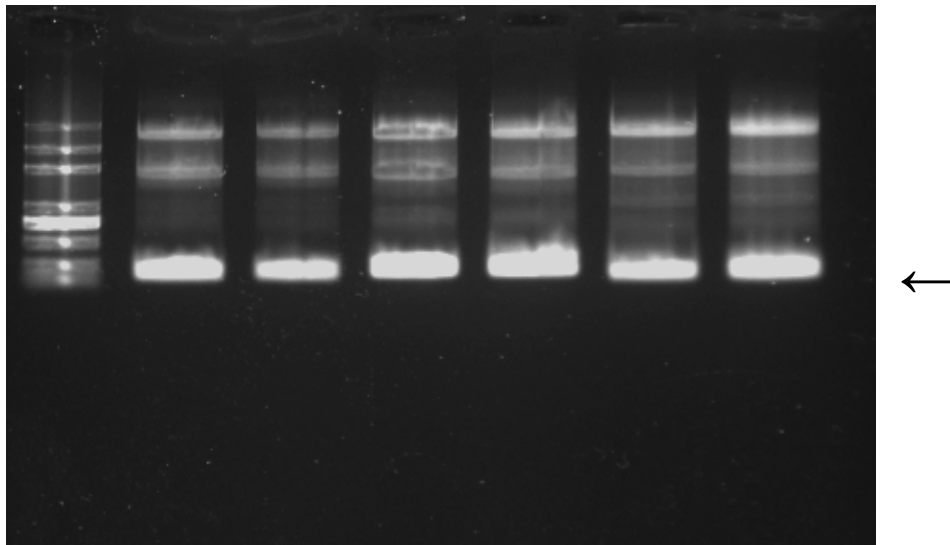
P4



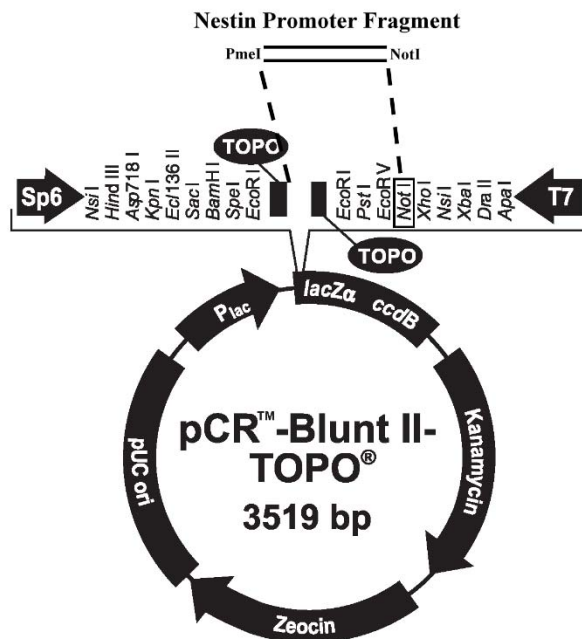
P4-1

P4-2

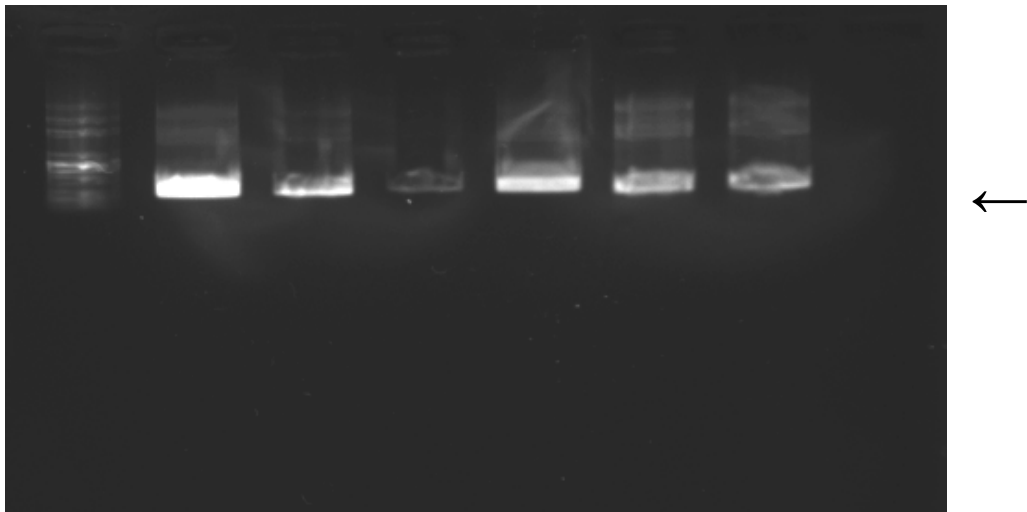
P4-3



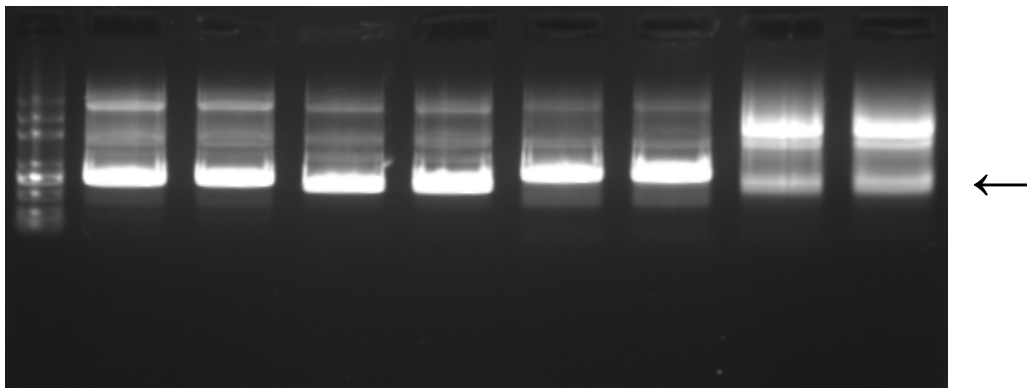
2. Cloning PCR for Screening sense colony.



P4-1-TOPO p4-2-TOPO p4-3-TOPO

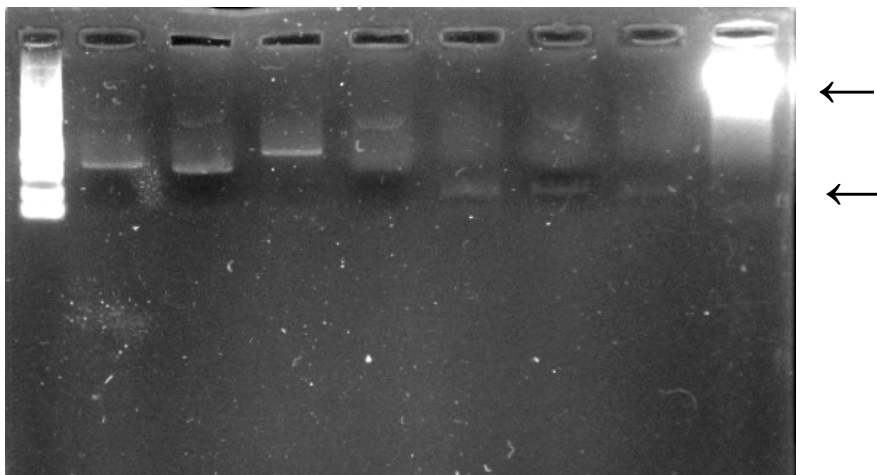


P1-TOPO P2-TOPO P3-TOPO P4-TOPO



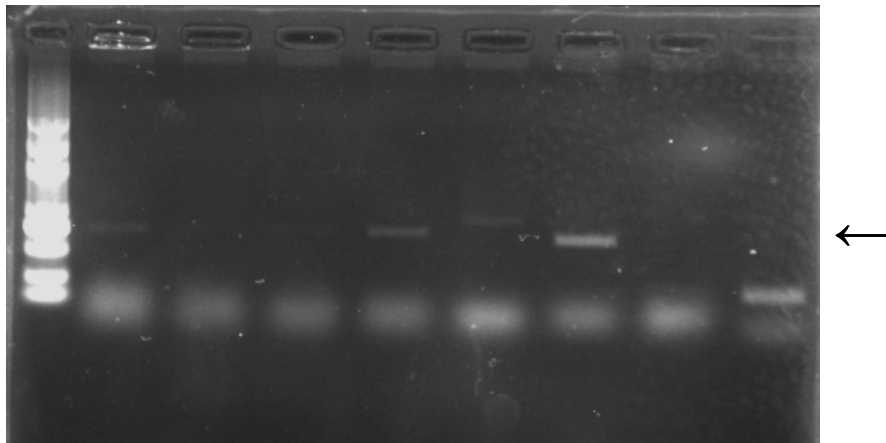
3. PmlI and NotI enzyme cite the plasmids

P1 P2 P3 P4 P4-1 P4-2 P4-3 psiCHECK

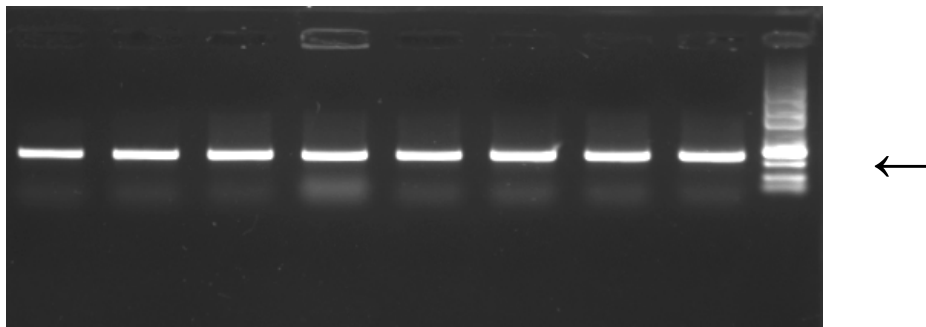


4. Ligation Nestin promoter fragments with psiCHECK fragment, after transformation, make colony PCR to verify the positive plasmid.

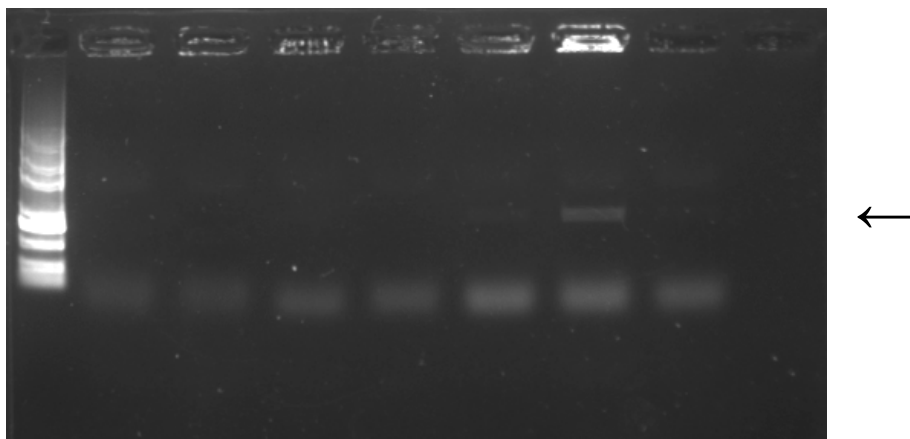
P1



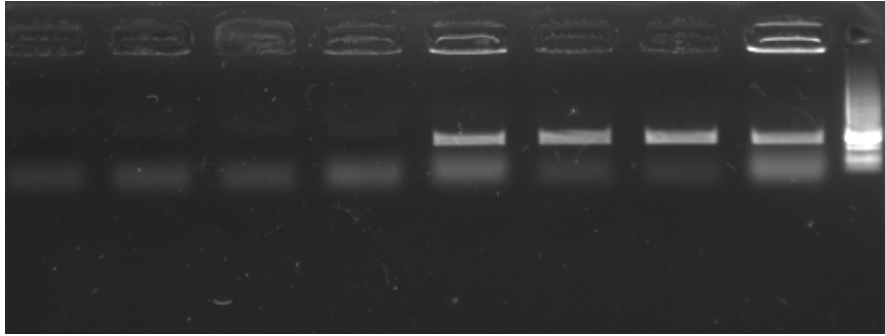
P2



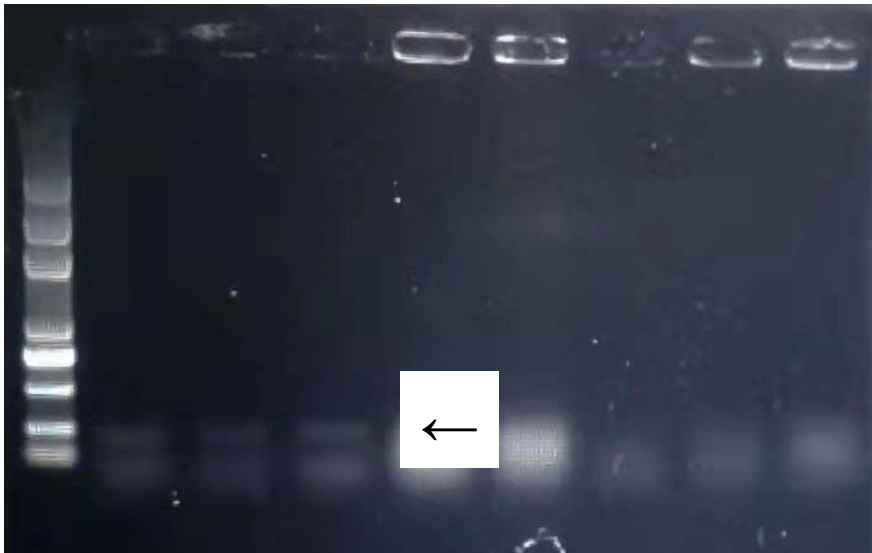
P3



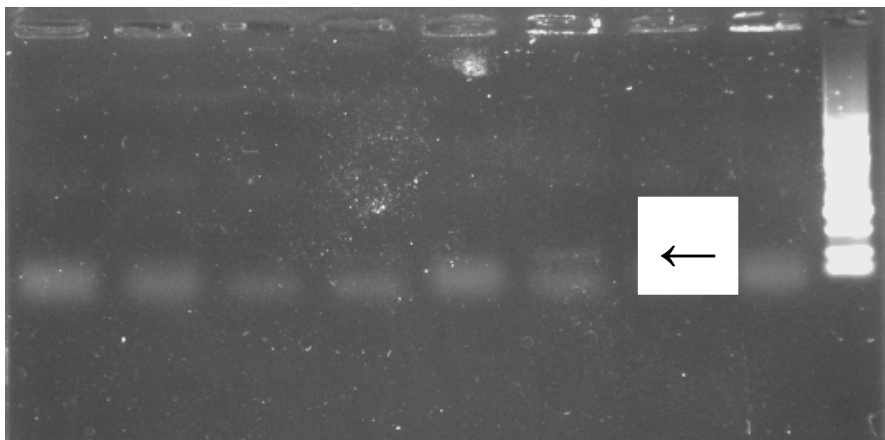
P4



P4-1



P4-2



P4-3

