

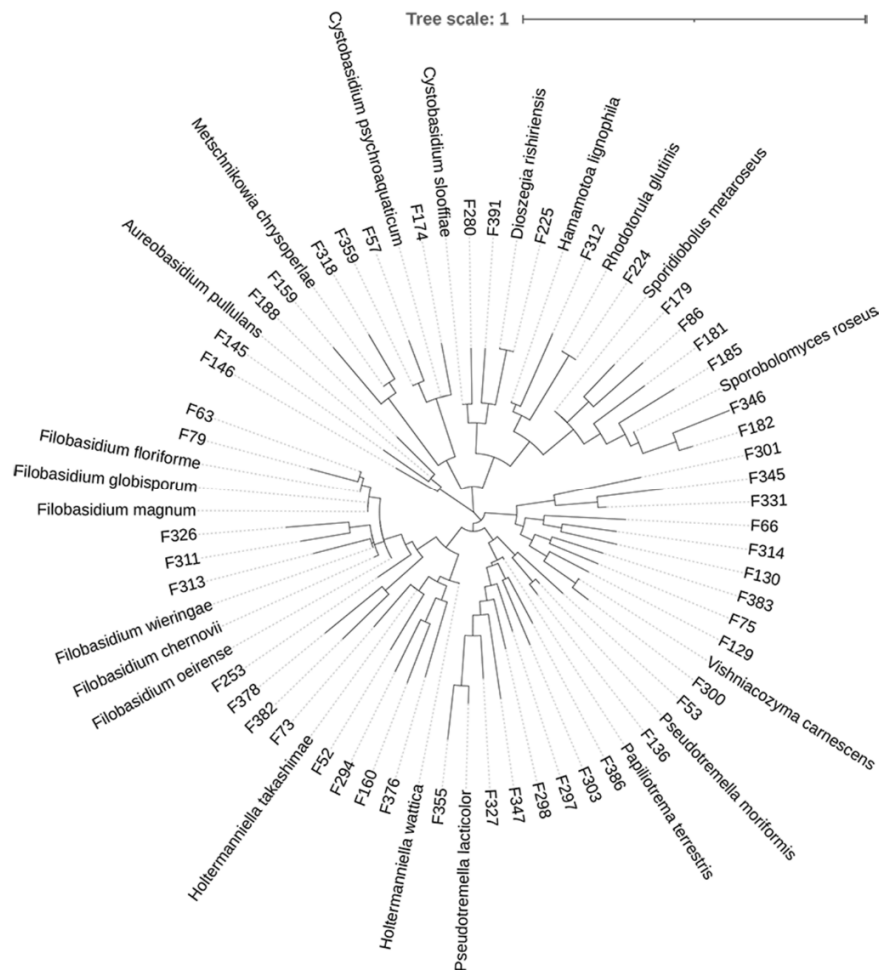
Supplementary Material

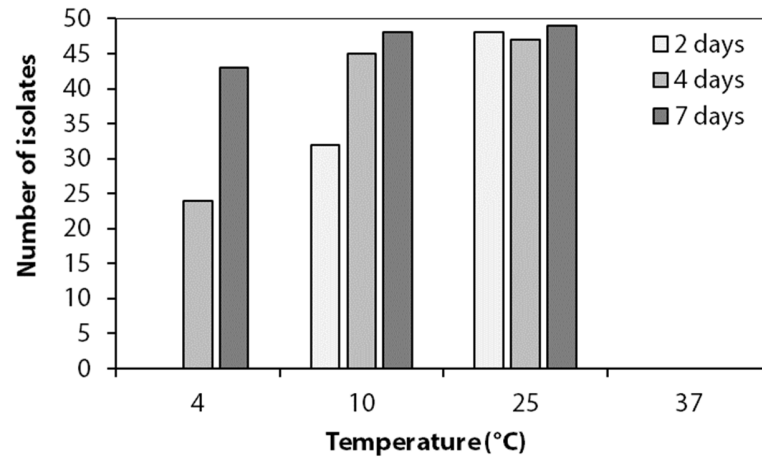
Genetic, phenotypic and metabolic diversity of yeasts from wheat flag leaves

Linda Gouka¹, Caroline Vogels¹, Lars Hestbjerg Hansen², Jos M. Raaijmakers^{1,3}, Viviane Cordovez^{1*}

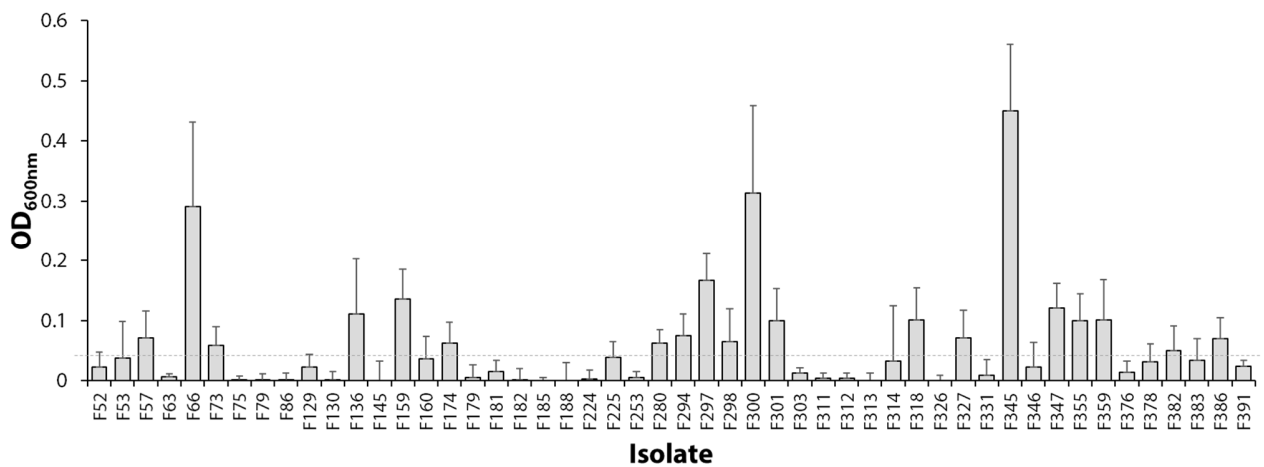
***Correspondence:** Viviane Cordovez, v.cordovez@nioo.knaw.nl

Supplementary Figure 1. Phylogeny of 51 phyllosphere yeast isolates selected for the screening of different phenotypic and metabolic traits. Phylogeny is based on D1/D2 domains of the large subunit of the 26S rRNA gene sequences compared to NCBI database. Neighbor Joining tree was constructed with MEGA, MUSCLE for alignment.





Supplementary Figure 2. Growth of phyllosphere yeasts at different temperatures. Bars represent the number of phyllosphere yeasts able to grow in the different temperature range. Additional information can be found in Supplementary Table S3.



Supplementary Figure 3. Biofilm formation by phyllosphere yeasts. Optical density (OD_{600nm}) of cells in biofilm was determined after 7 days. Bars present the standard deviation of the means of 4 replicates and at least 2 independent experiments. Isolates displaying an optical density higher than 0.05 were considered to form biofilm.