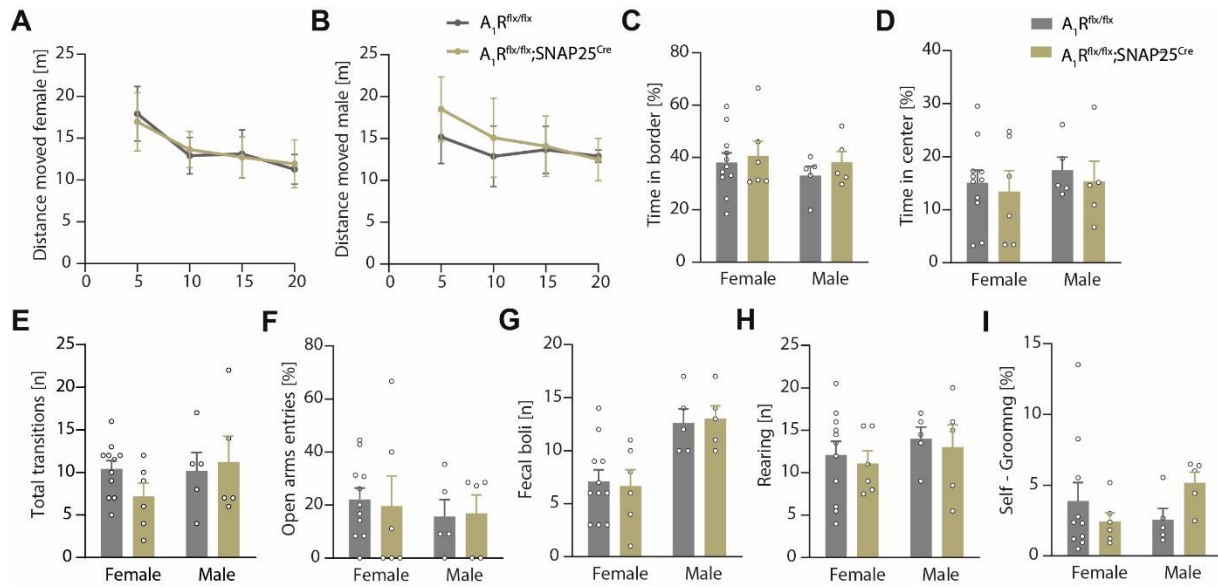


Supplementary Figure 3



Supplementary Figure 3 | Neuronal A_1R does not affect exploratory and anxiety behaviors. Exploratory and anxiety behavior was analyzed in A_1R -proficient and A_1R -deficient mice. To reveal sex differences, animals were analyzed separately in $A_1R^{flx/flx}$ ($n(f) = 11$, $n(m) = 5$) and $A_1R^{flx/flx};SNAP25^{Cre}$ ($n(f) = 6$, $n(m) = 5$). **(A–D)** Open field test. The distance animals moved in the open field measured in meter in female **(A)** and male **(B)** mice of $A_1R^{flx/flx}$ and $A_1R^{flx/flx};SNAP25^{Cre}$. Repeated measures were analyzed by two way ANOVA. **(C)** Percentage of time mice spent at the border in the open field test ($BF_{10}(f) = 0.445$, $BF_{10}(m) = 0.647$). **(D)** Percentage of time mice spent in the center of the open field ($BF_{10}(f) = 0.452$, $BF_{10}(m) = 0.527$). **(E–I)** Elevated maze test. **(E)** Number of transitions between experimental arms in the elevated plus maze ($BF_{10}(f) = 1.299$, $BF_{10}(m) = 0.504$). **(F)** Percentage of entries in the arms without walls in the elevated plus maze ($BF_{10}(f) = 0.455$, $BF_{10}(m) = 0.495$). **(G)** Number of fecal boli counted in the open field test indicating anxiety behavior ($BF_{10}(f) = 0.440$, $BF_{10}(m) = 0.500$). **(H)** Number of rearing events in male and female mice analyzed in the elevated plus maze ($BF_{10}(f) = 0.445$, $BF_{10}(m) = 0.510$). **(I)** Percentage of time per trial demonstrating behavior of self-grooming during the elevated plus maze testing ($BF_{10}(f) = 0.545$, $BF_{10}(m) = 1.143$).