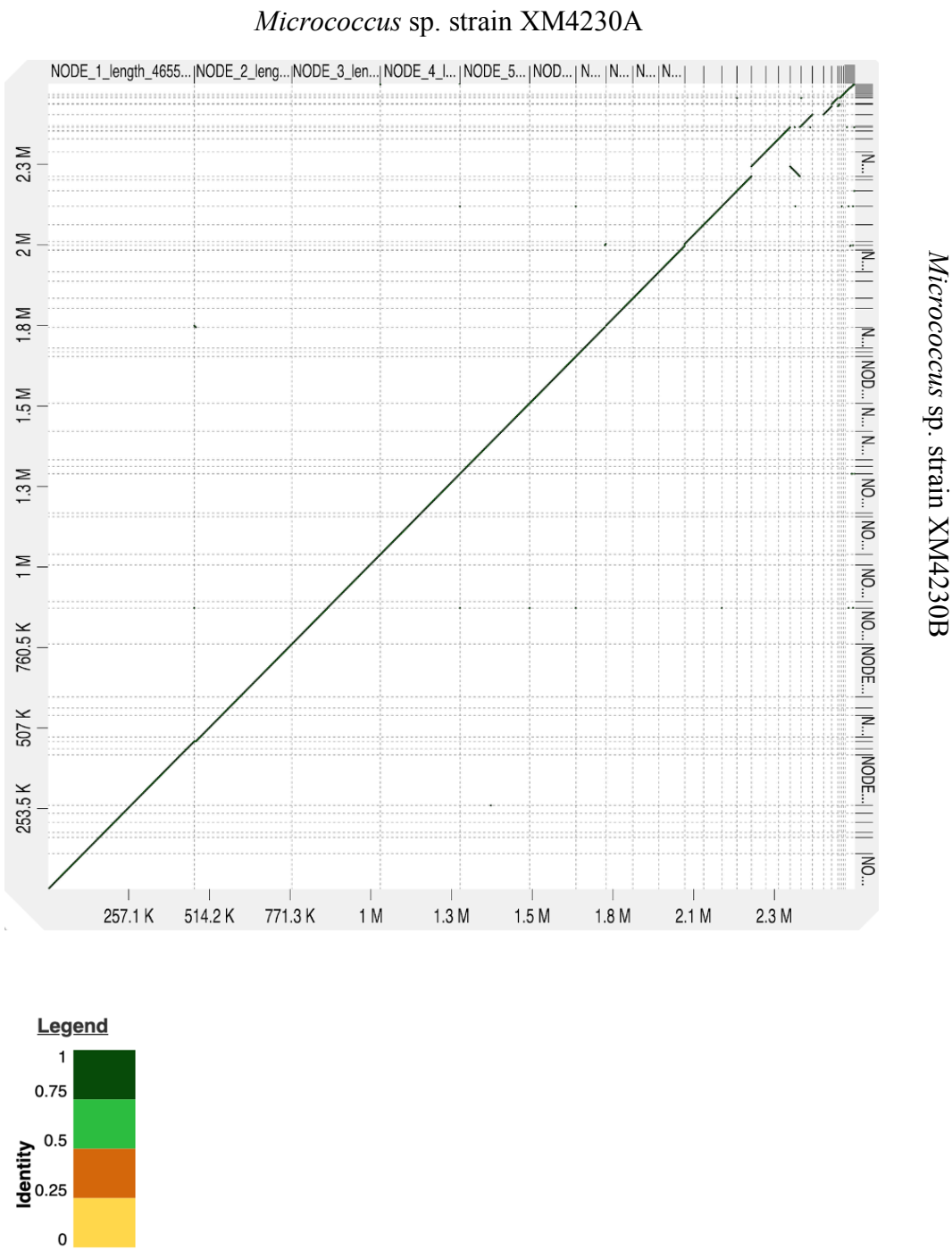


**Supplementary Table 1. Observed growth inhibition of active extracts against *M. tuberculosis* H37Ra and associated actinomycete strains.**

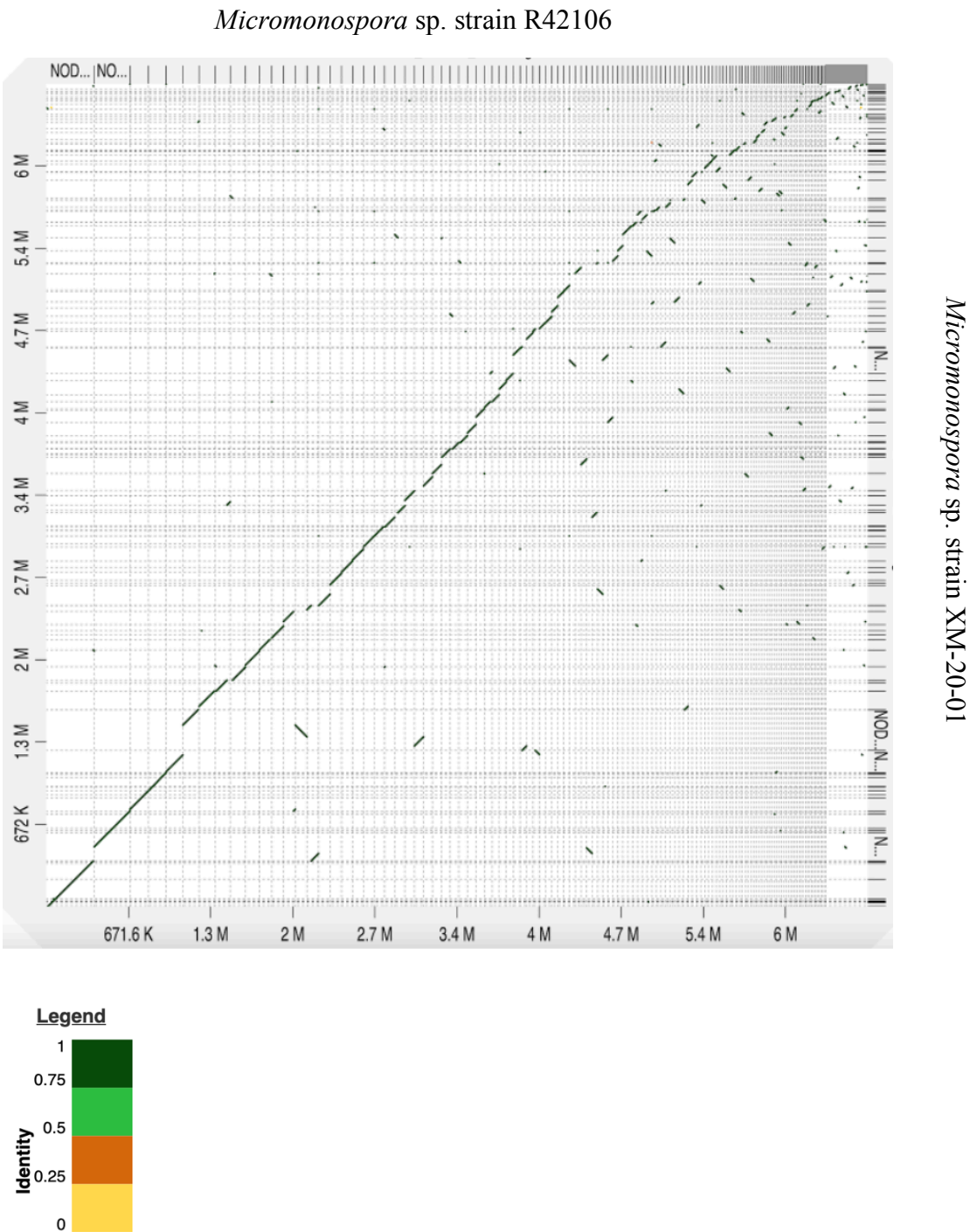
Strain ID	Clearance Zone v. <i>M. tuberculosis</i> H37Ra	
	[25 ug/ disk]	[250 ug/ disk]
<i>Micrococcus</i> sp. strain XM4230A	+	++++
<i>Micrococcus</i> sp. strain XM4230B	++	++++
<i>Micromonospora</i> sp. strain R42003	+	++
<i>Micromonospora</i> sp. strain R42004	+	++
<i>Micromonospora</i> sp. strain R42106	-	++
<i>Micromonospora</i> sp. strain XM-20-01	+	++
<i>Brevibacterium</i> sp. strain R8603A2	-	++
<i>Brevibacterium</i> sp. strain XM4083	-	++
<i>Streptomyces</i> sp. strain XM4011	+	++
<i>Streptomyces</i> sp. strain XM83C	++++	++++
<i>Streptomyces</i> sp. strain XM4193	+	+++
DMSO Control	-	-

Legend: - (no growth inhibition observed), + (radius  $\leq$  1mm), ++ (1mm < radius  $\leq$  2mm), +++ (2mm < radius  $\leq$  5mm), ++++ (radius > 5mm)

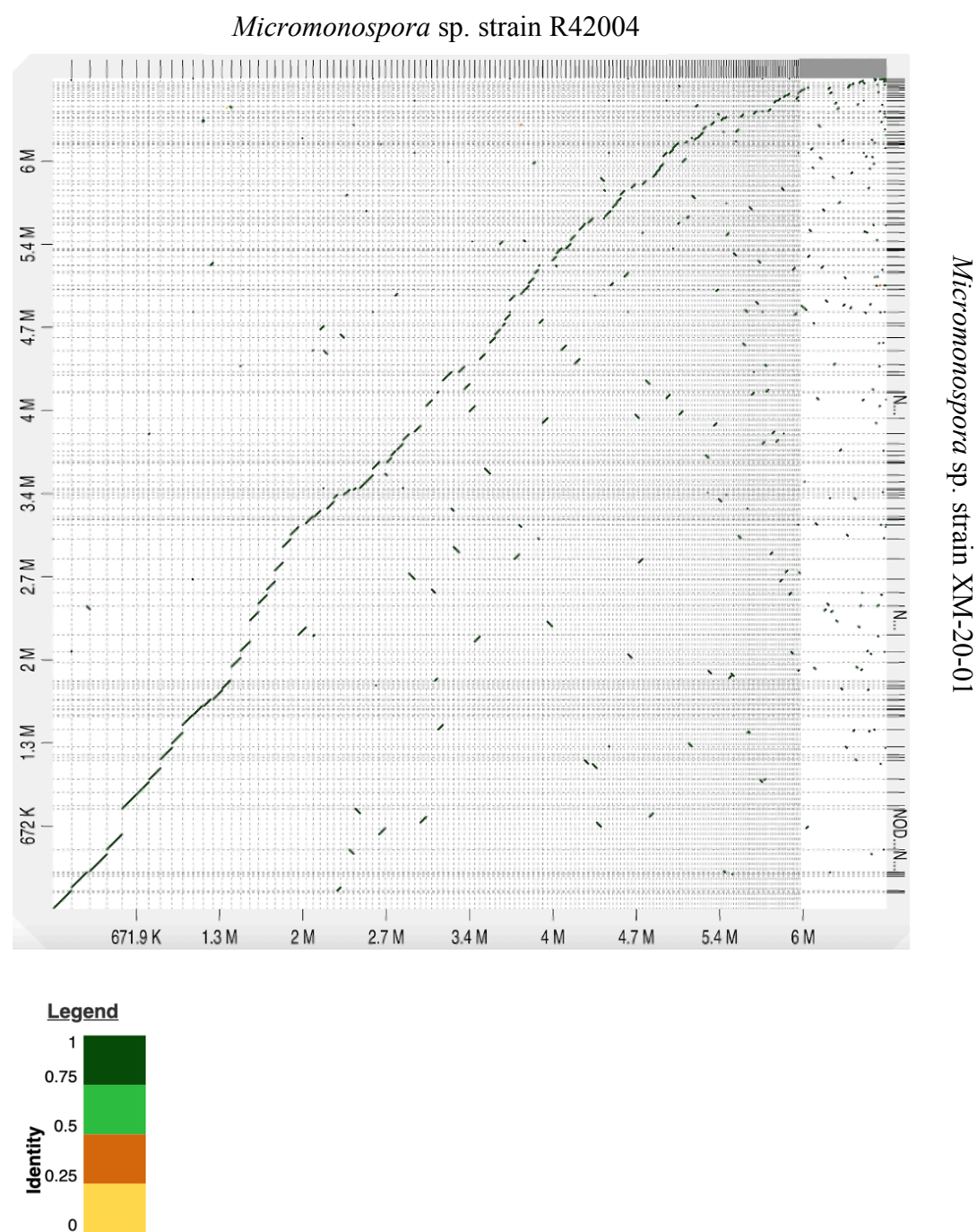
Supplementary Figure 1. Genome dot plot comparing *Micrococcus* spp. strains XM4230A and XM4230B.



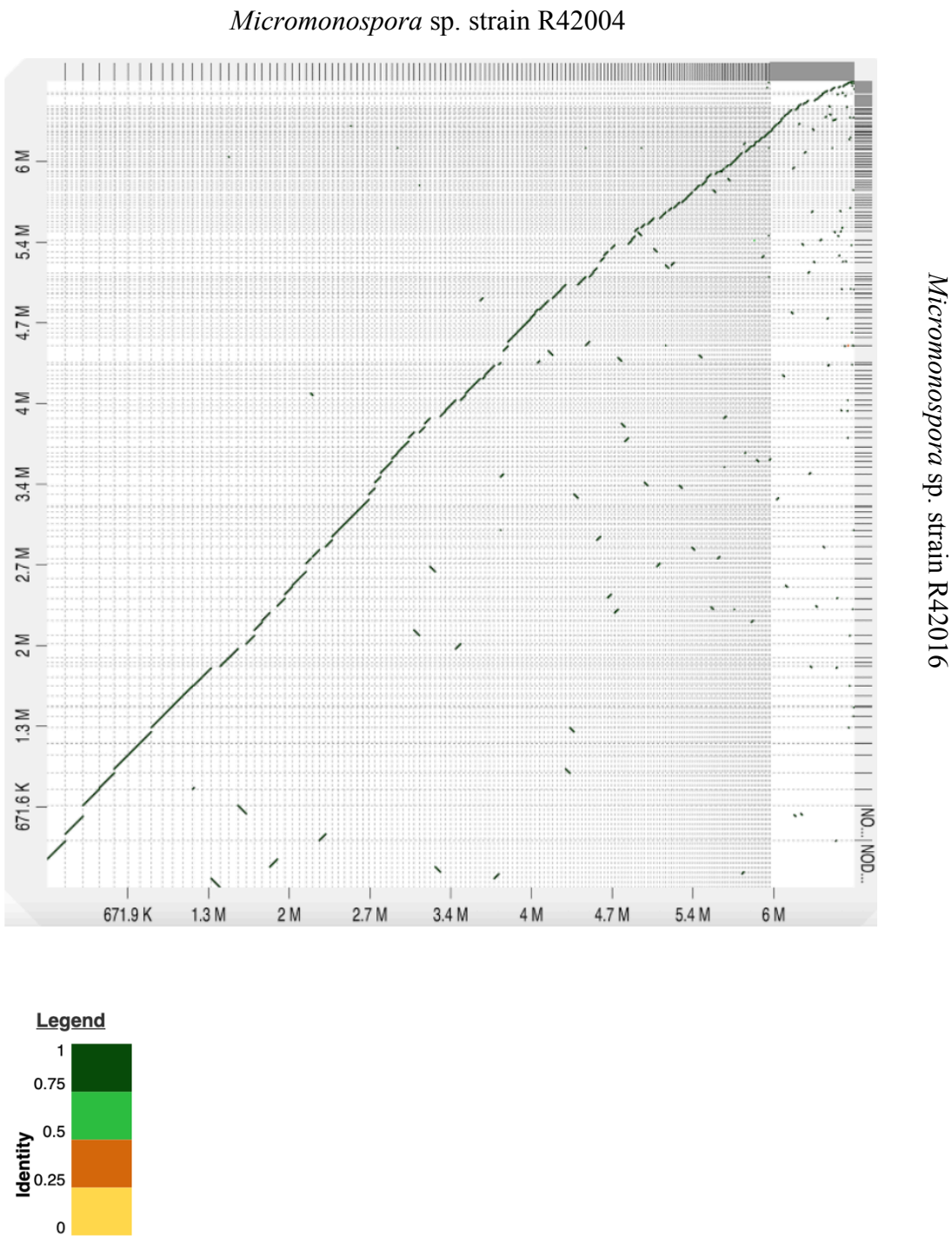
Supplementary Figure 2. Genome dot plot comparing *Micromonospora* spp. strains R42106 and XM-20-01.



Supplementary Figure 3. Genome dot plot comparing *Micromonospora* spp. strains R42004 and XM-20-01.

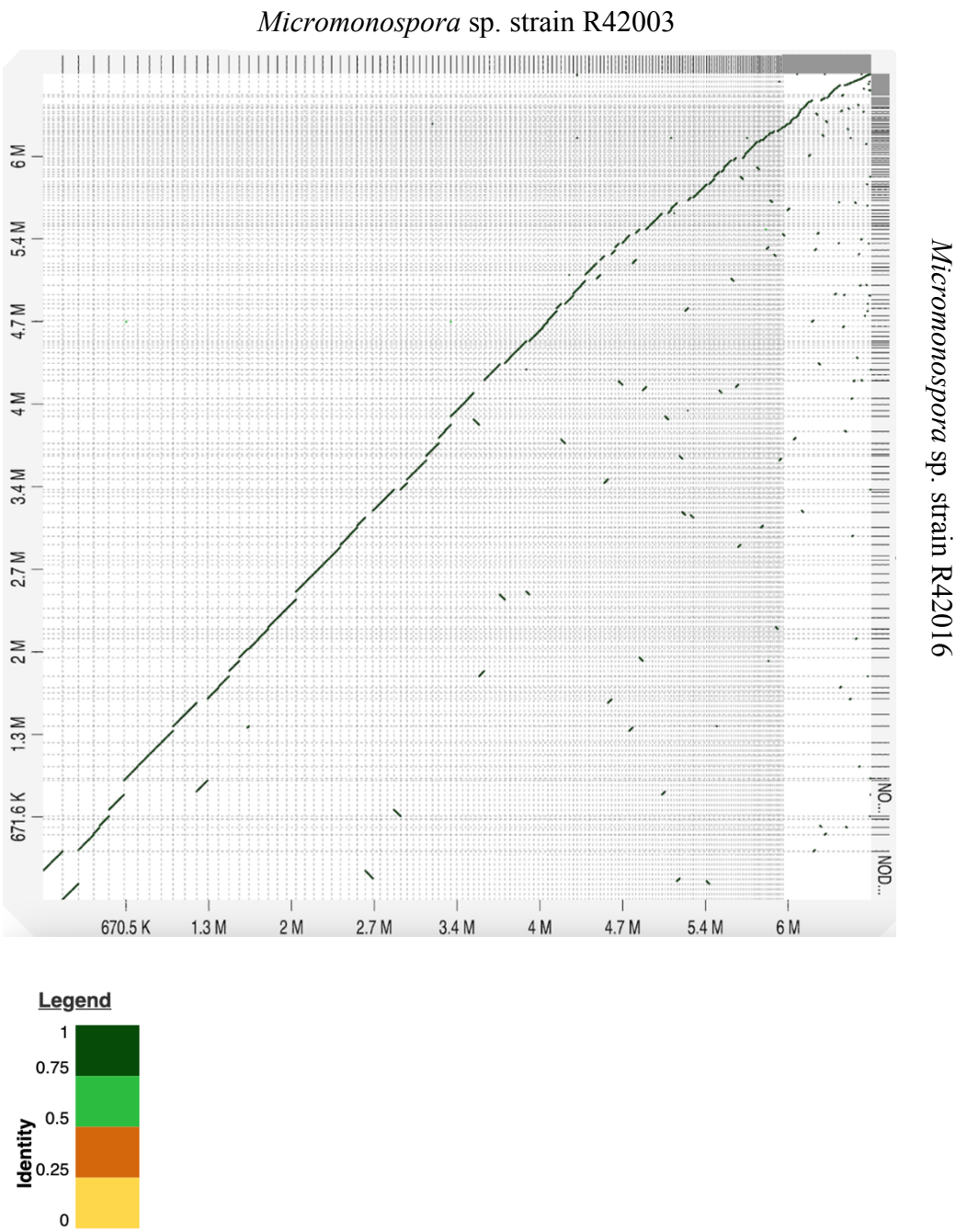


Supplementary Figure 4. Genome dot plot comparing *Micromonospora* spp. strains R42004 and R42106.

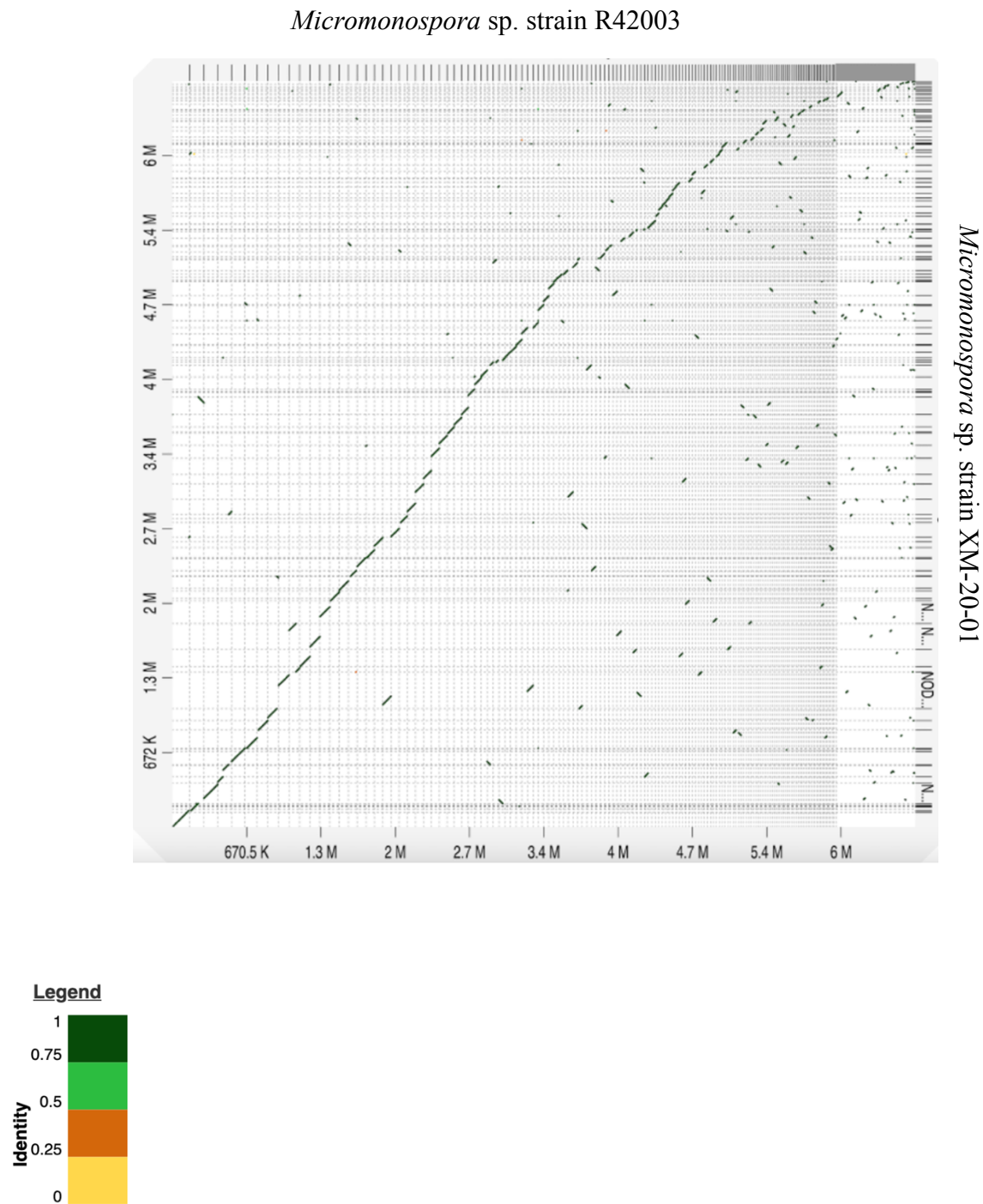




Supplementary Figure 5. Genome dot plot comparing *Micromonospora* spp. strains R42003 and R42106.



Supplementary Figure 6. Genome dot plot comparing *Micromonospora* spp. strains R42003 and XM-20-01.



Supplementary Figure 7. Genome dot plot comparing *Micromonospora* spp. strains R42003 and R42004.

