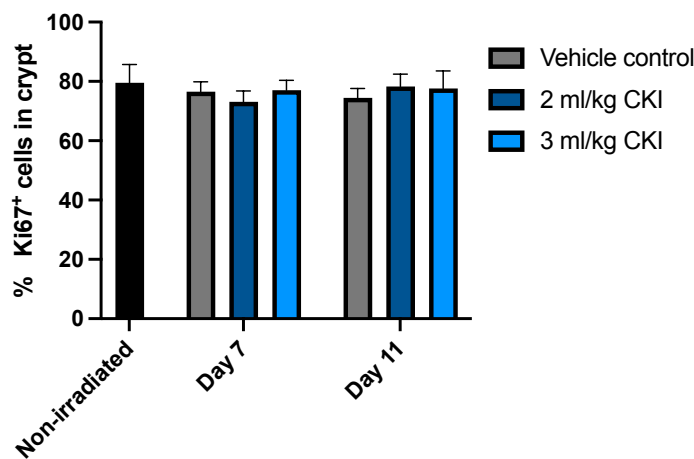
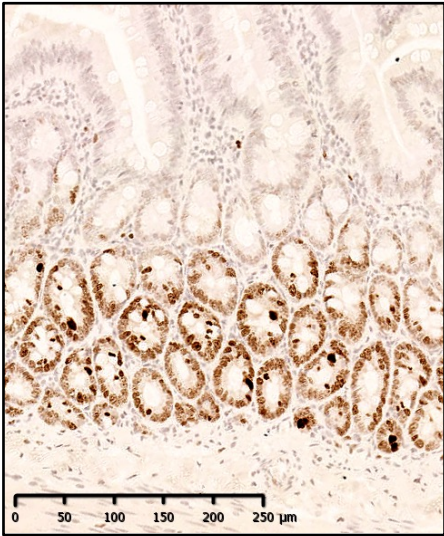


(a) Duodenum

Non-irradiated

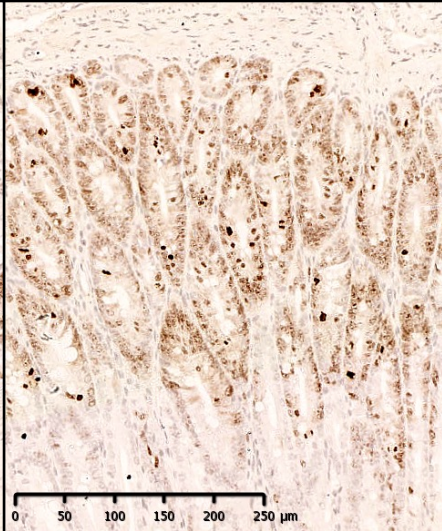
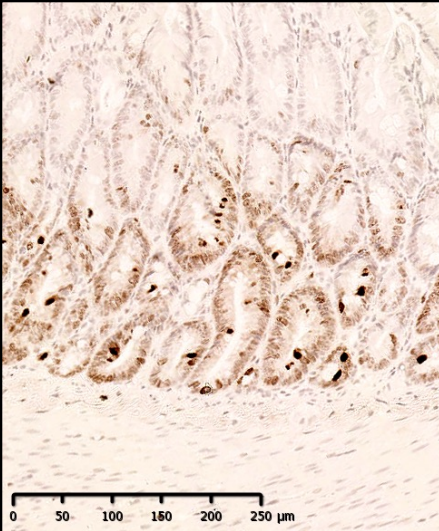
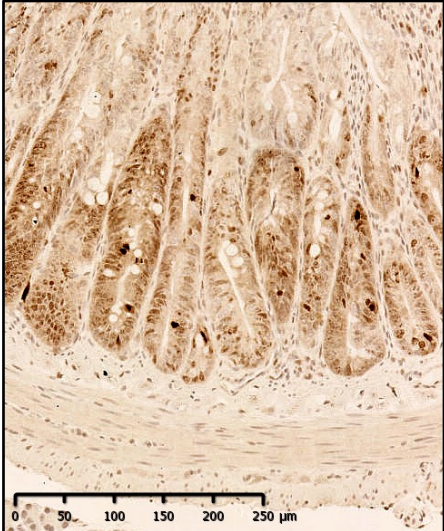


Vehicle control

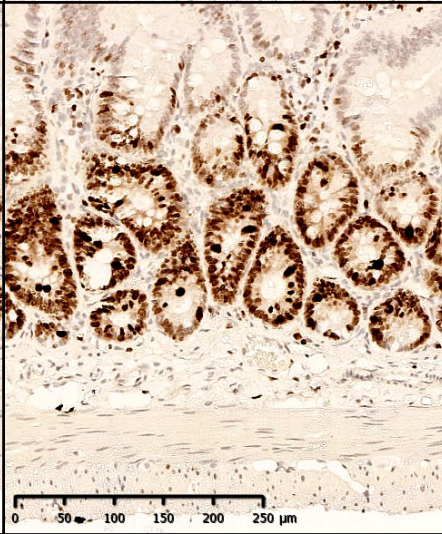
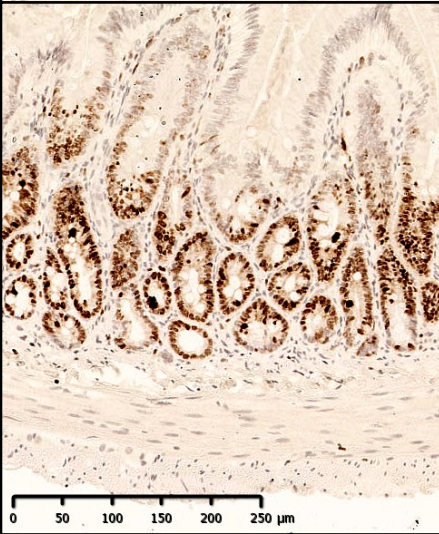
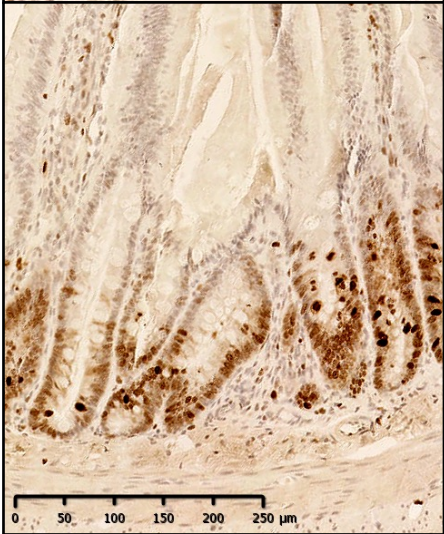
CKI 2ml/kg

CKI 3 ml/kg

Day 7

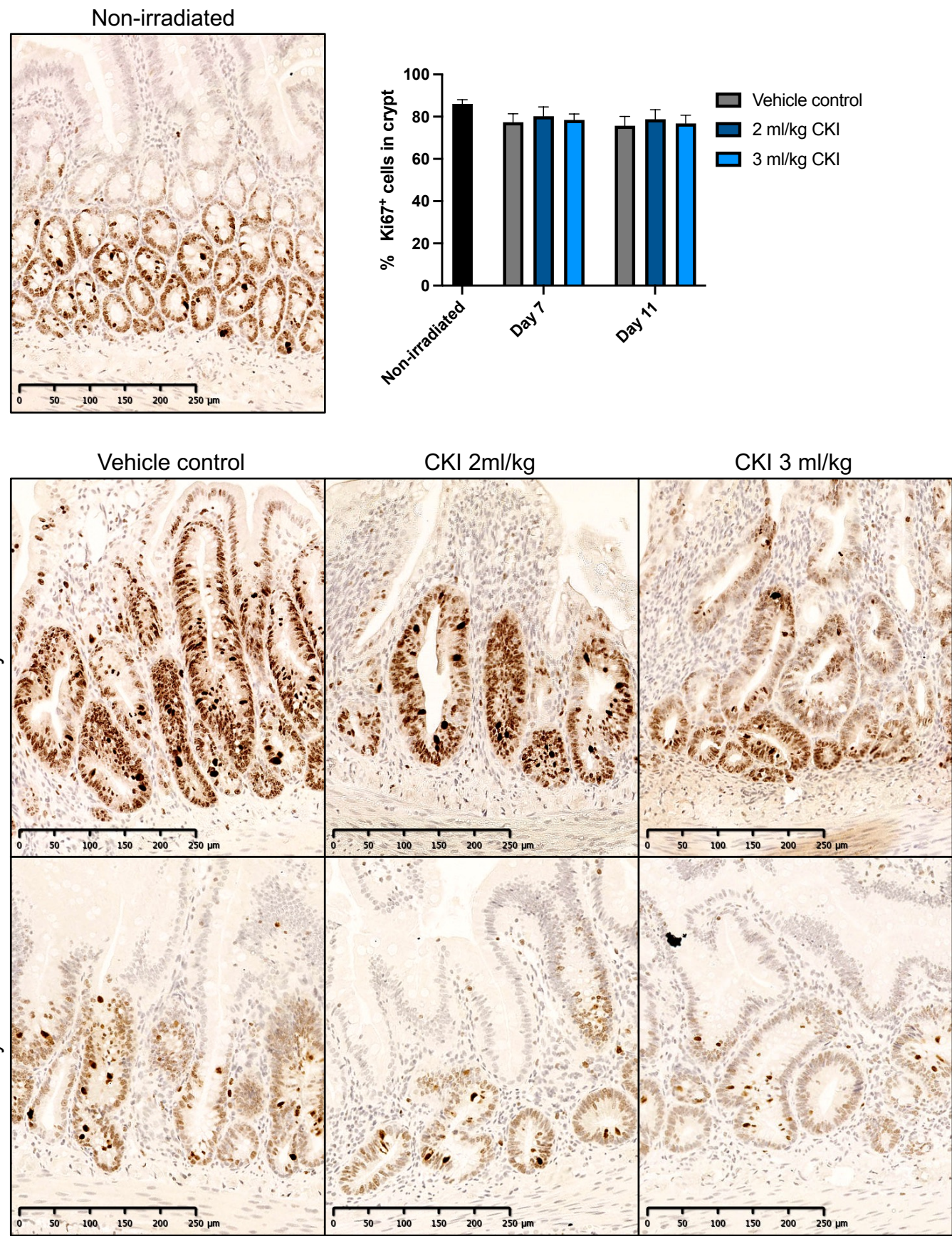


Day 11



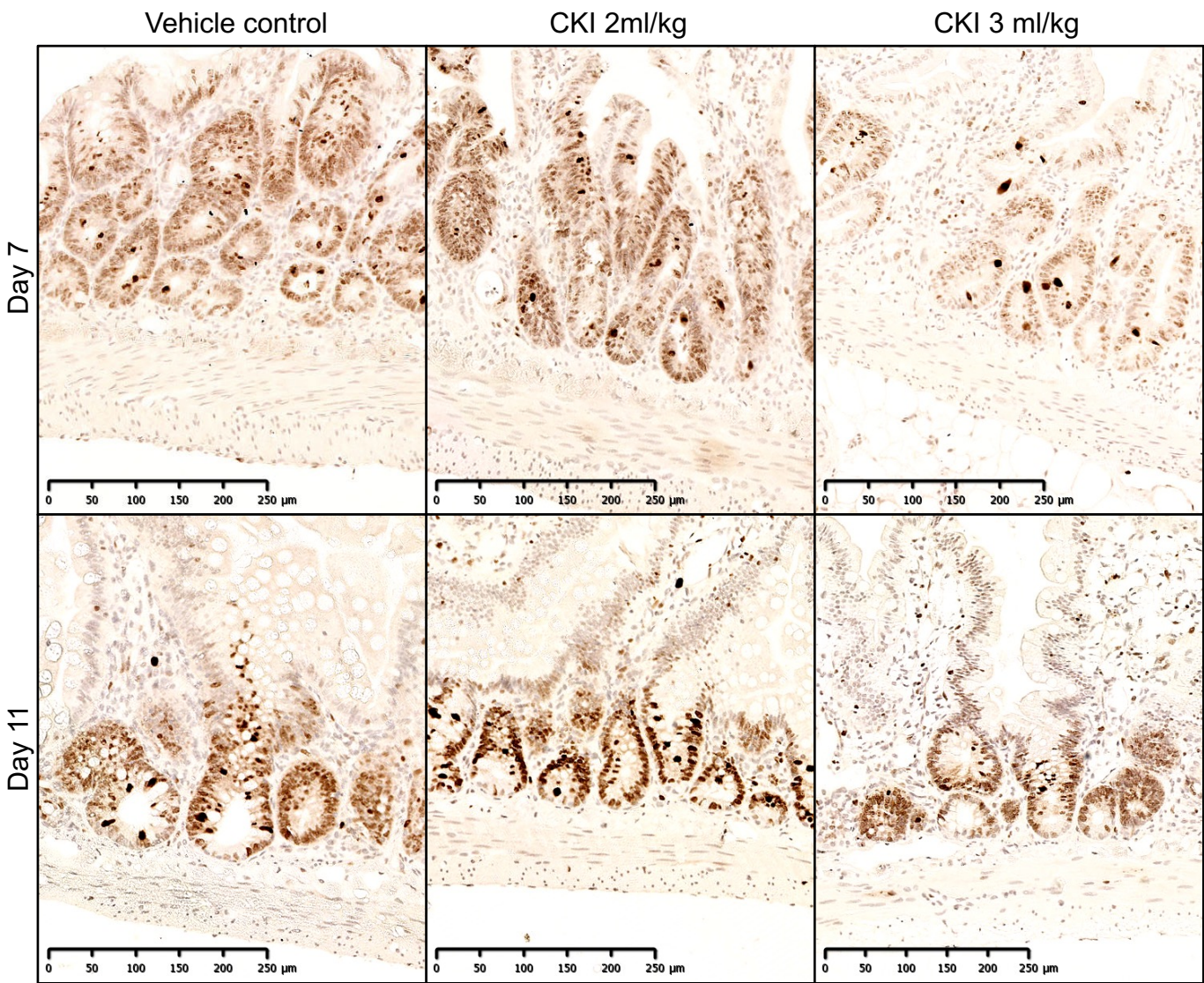
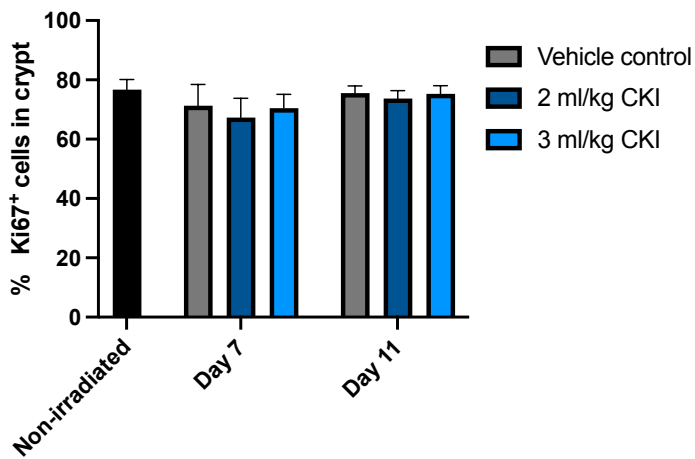


(b) Jejunum



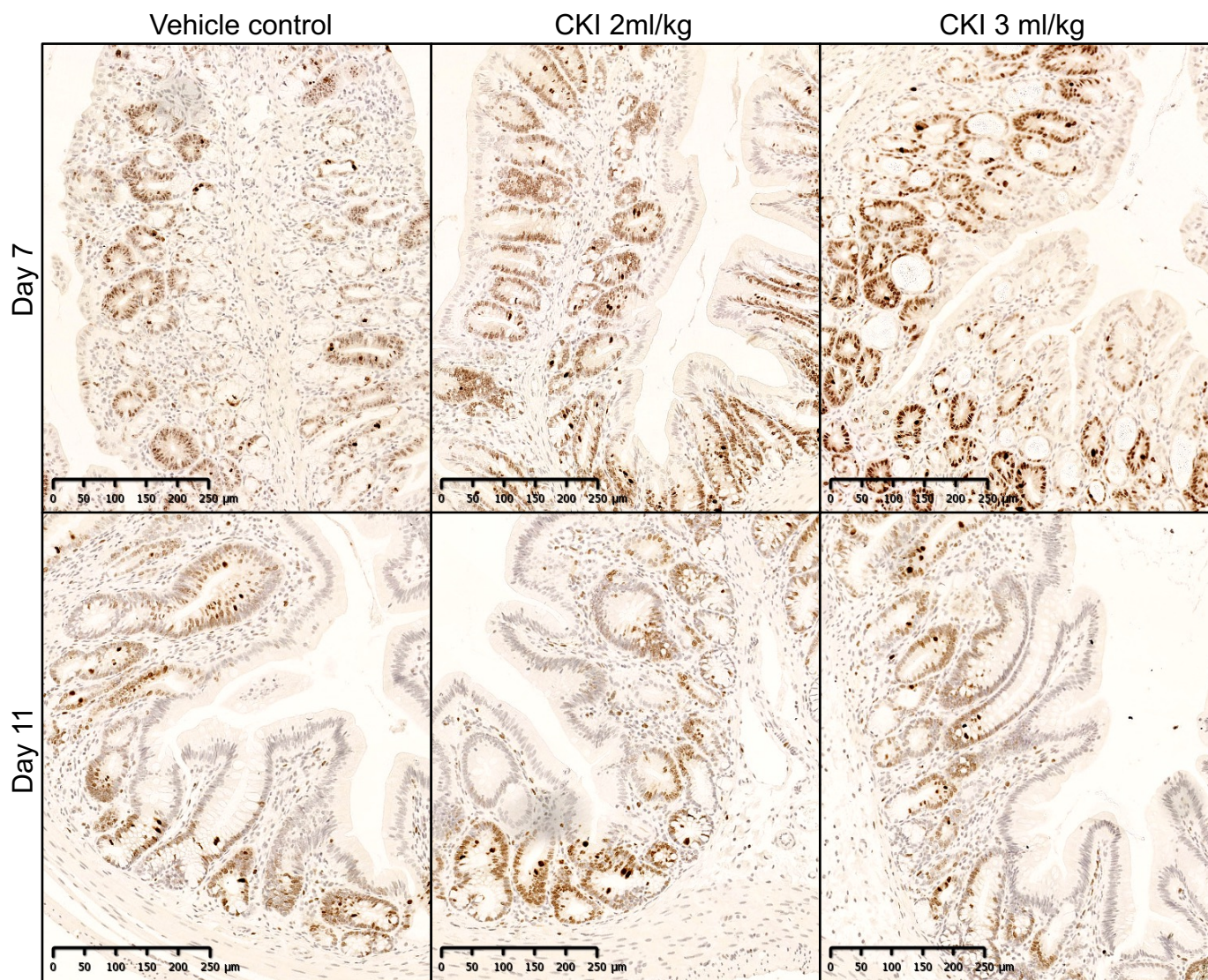
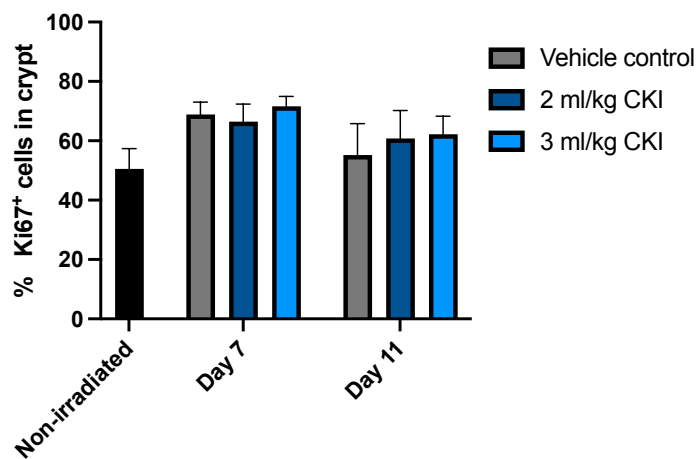
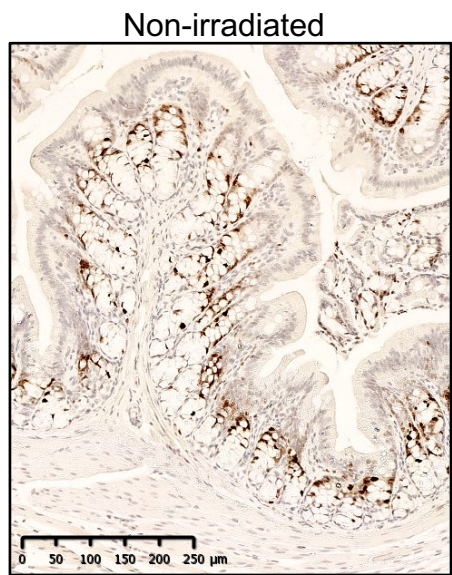


(c) Ileum





(d) Colon





**Supplementary figure 4:** Administration of CKI have no effect on cell proliferation of irradiated epithelia. Representative IHC images of duodenum (a), jejunum (b), ileum (c) and colon (d) sections stained for Ki-67 and quantitation of Ki-67<sup>+</sup> cells (top-right). The intestines were collected from irradiated rats on day 7 and 11 post initial irradiation and paraffin-embedded tissues were sectioned for IHC detecting Ki-67. Data are represented as mean $\pm$ SD.