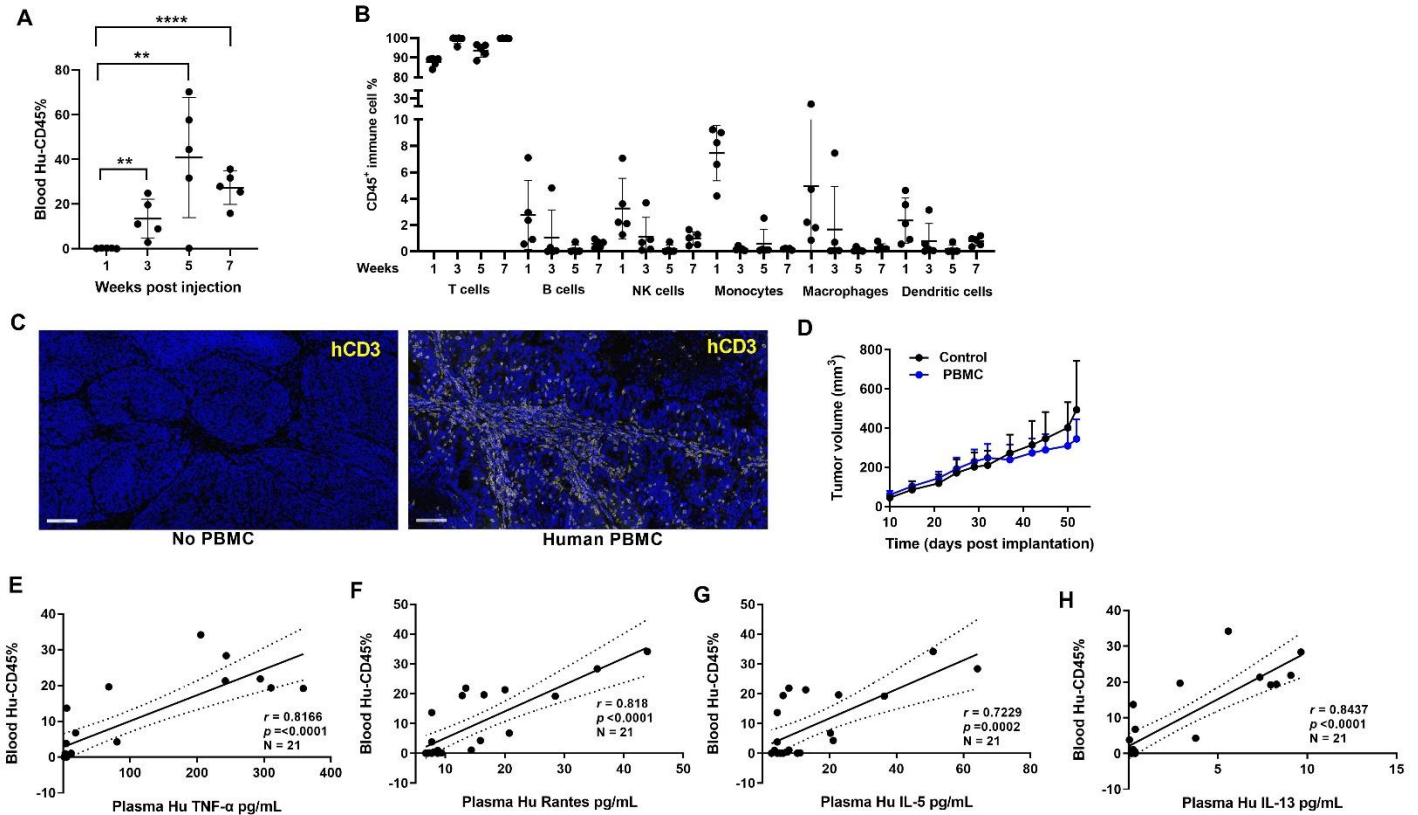
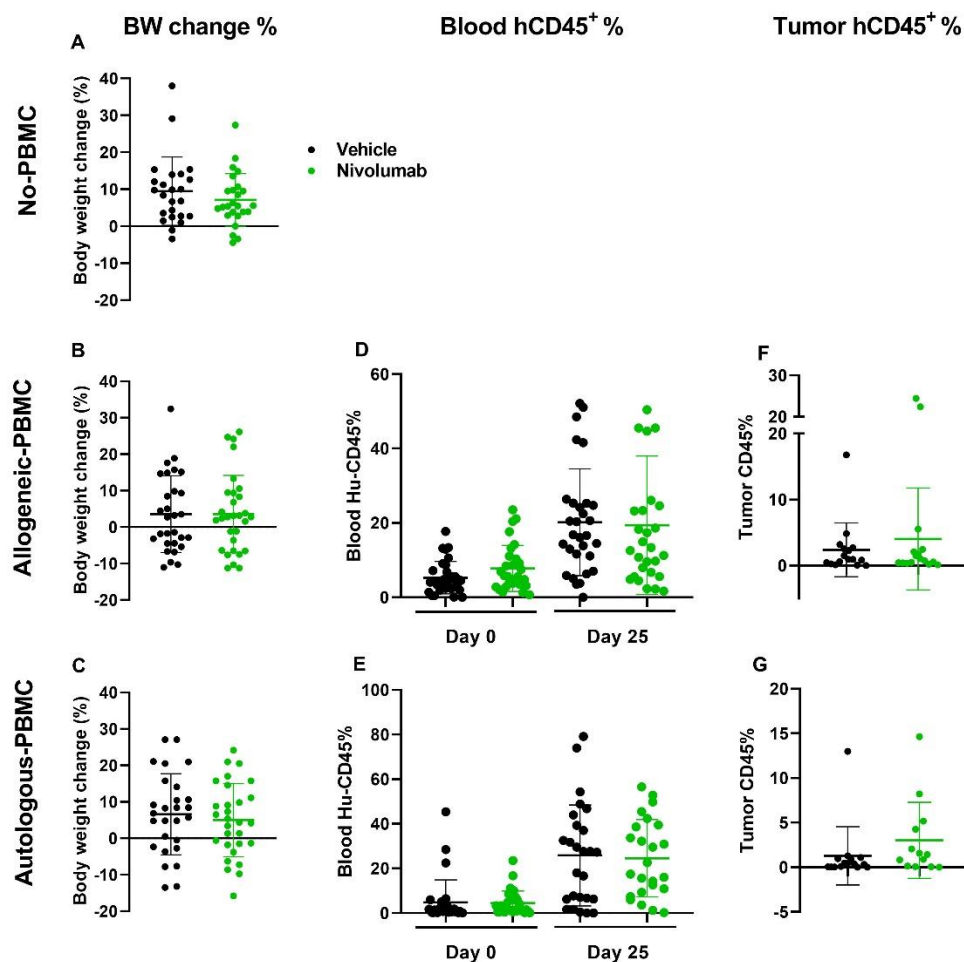


## Supplemental Data



### Supplemental Figure 1. Humanized mouse characteristics

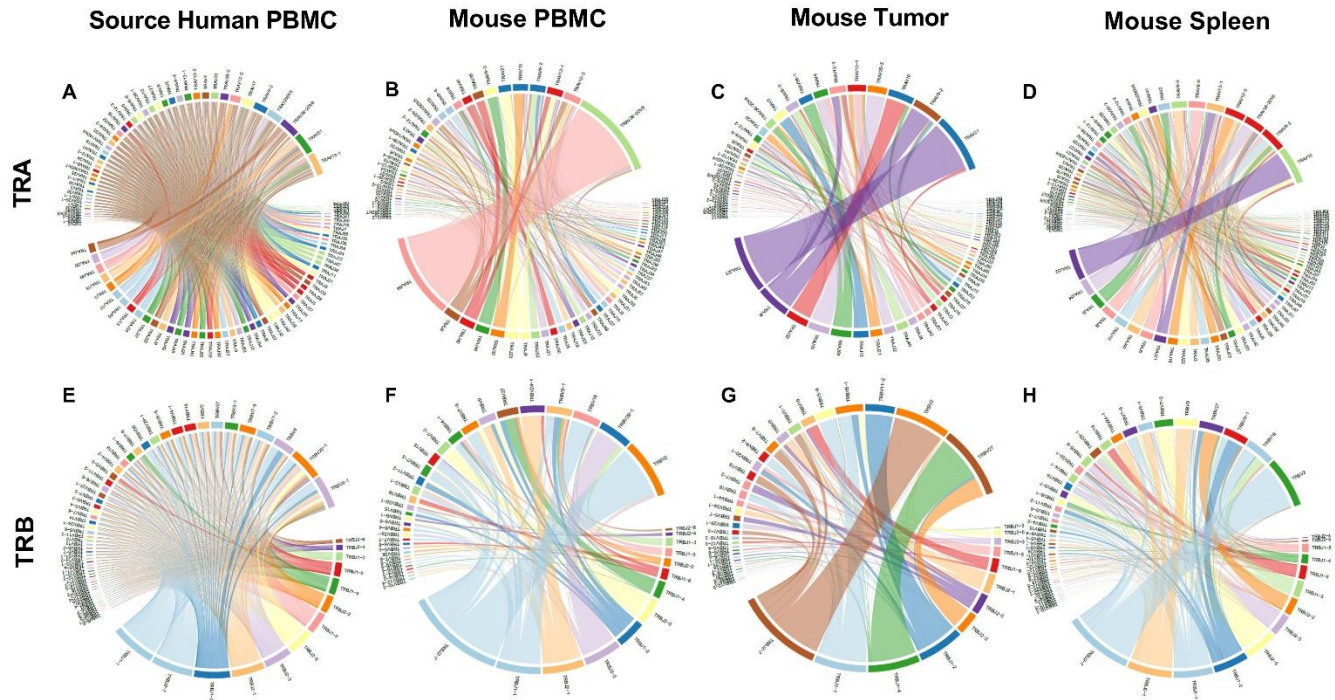
(A) Changes in hCD45<sup>+</sup> immune cells over time (week 1 through week 7 post PBMC injection) in mouse blood. (B) Changes in sub populations of hCD45<sup>+</sup> immune cell subtypes over time in mouse blood. (C) hCD3<sup>+</sup> staining in a nonhumanized mouse PDX (left) and a humanized mouse PDX (right). (D) PDX growth curves for mice with and without injection of human PBMCs. (E-H) Correlation of the hCD45<sup>+</sup> cell percentage in mouse blood with human tumor necrosis factor (TNF)-α (E), Rantes (F), interleukin (IL)-5 (G), and IL-13 (H) level in mouse plasma. *P* values ≤ 0.01 were represented as \*\* and *P* values ≤ 0.0001 were represented as \*\*\*\*.



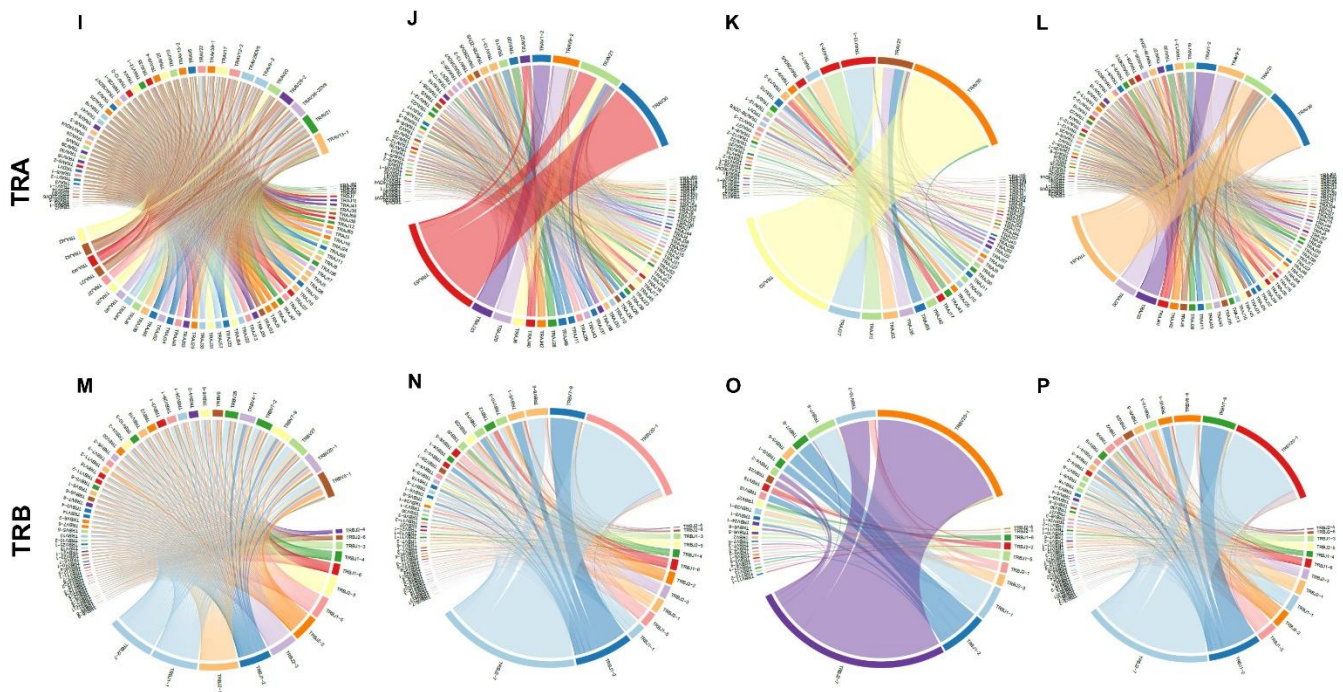
**Supplemental Figure 2. Body weight changes and human immune cell percentage in blood and tumors of mice**

(A, B, and C) Body-weight changes in mice under non-humanized (A), allogeneic (B), and autologous (C) conditions. (D and E) hCD45<sup>+</sup> cell percentages in peripheral blood before and after treatment under allogeneic (D) and autologous (E) conditions. (F and G) Tumor immune infiltrates after anti-PD-1 therapy under allogeneic (F) and autologous (G) conditions.

## B8120



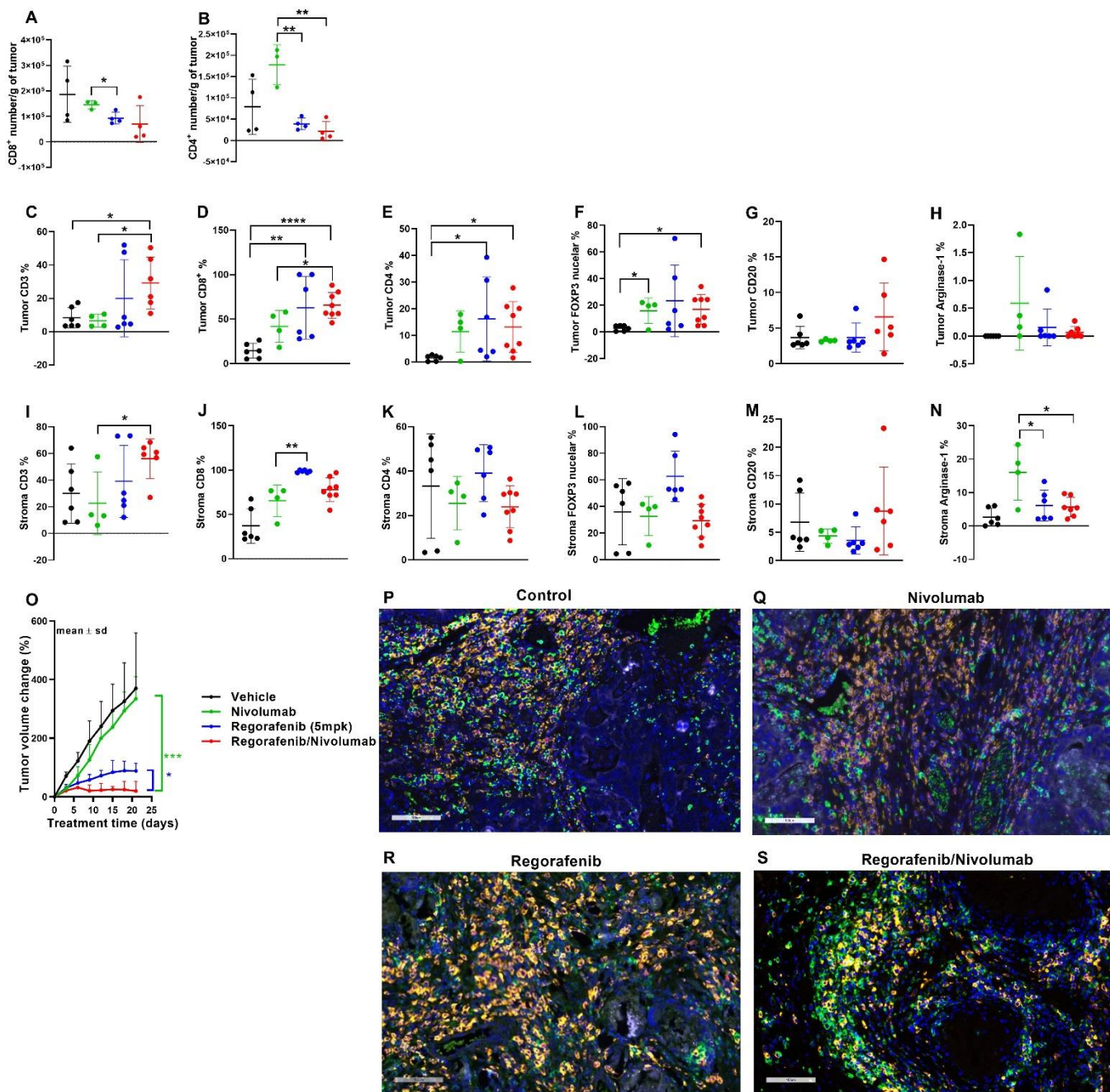
## B8176



### Supplemental Figure 3. Circus plots of clonal rearrangement patterns

(A-D) The rearrangement patterns for the TCR chains within the TRA clones in model B8120. (E-H) The rearrangement patterns for the TCR chains within the TRB clones in model B8120. (I-L) The rearrangement patterns for the TCR chains within the TRA clones in model B8176. (M-P) The rearrangement patterns for the TCR chains within the TRB clones in model B8176.





**Supplemental Figure 4. Results of anti-PD-1 and regorafenib combination therapy for MSS CRC model** (A and B) CD8<sup>+</sup> (A) and CD4<sup>+</sup> (B) T-cell numbers per gram of tumor weight. (C-F) Cell percentage distributions within the intratumoral compartments. (I-L) Cell percentage distributions within the stromal compartments. (G and M) CD20<sup>+</sup> B-cell distributions within the intratumoral (G) and stromal (M) compartments. (H and N) Arginase-1<sup>+</sup> macrophage distribution within the intratumoral (H) and stromal (N) compartments. (O) The effect of the combination of anti-PD-1 therapy and a reduced regorafenib dose on tumor volume change in the C1211 MSS CRC PDX model. (P-S) Multiplex immunofluorescence representative images of control (P), nivolumab (Q), regorafenib (R), and regorafenib+nivolumab (S) treated tumors showing staining for CD8 (green), CD4 (gold), FOXP3 (red), TUMOR (periwinkle/white). All *P* values ≤ 0.05 were represented as \*, *P* values ≤ 0.01 were represented as \*\*, *P* values ≤ 0.001 were represented as \*\*\*, and *P* values ≤ 0.0001 were represented as \*\*\*\*.

**Supplemental Table 1A: Flow cytometry antibodies**

Antibody target	Conjugate	Clone	Company
CD45	PerCP	30-F11	BD Biosciences
CD45	APC	HI30	BD Biosciences
CD3	PE	UCHT1	BD Biosciences
CD4	Alexa 700	RPA-T4	BD Biosciences
CD8	PE-Cy™7	RPA-T8	BD Biosciences
FoxP3	Horizon V450	259D/C7	BD Biosciences
CD56	BB700	B159	BD Biosciences
CD56	Horizon V450	B159	BD Biosciences
CD19	FITC	HIB19	BD Biosciences
CD15	PerCP-Cy5.5	HI98	BD Biosciences
CD14	PE-Cy7	MphiP9	BD Biosciences
CD11b/Mac-1	APC-Cy7	ICRF44	BD Biosciences
CD209	PE	DCN46	BD Biosciences
CD163	PE-CF594	GHI/61	BD Biosciences

**Supplemental Table 1B: mIF antibodies**

Antibody target	Panel	Clone	Company
Cleaved caspase3	Tumor microenvironment panel	40714	Biocare
Ki-67	Tumor microenvironment panel	SP6	Abcam
Vimentin	Tumor microenvironment panel	D21H3	Cell Signaling Technologies
Pan Cytokeratin	Tumor microenvironment panel	1712R	Bioss
CD8	T cell panel	NBP2-29475	Novus
CD4	T cell panel	BSB5151	BioSB
FoxP3	T cell panel	98377	Cell Signaling Technologies
Arginase-1	Macrophage panel	PA5-85267	ThermoFisher
CD163	Macrophage panel	EPR19518	Abcam
IBA-1	Macrophage panel	EPR16589	Abcam
Ku80	Macrophage panel	2180	Cell Signaling Technologies

**Supplemental Table 2. TCR sequencing data** (excel sheet attached separately)**Supplemental Table 3. CRC PDX model details** (excel sheet attached separately)