



Radiocarbon Dating for the Reconstruction of the 1717 CE Triolet Rock Avalanche in the Mont Blanc Massif, Italy

Irka Hajdas^{1*}, Ursula Sojc¹, Susan Ivy-Ochs¹, Naki Akçar² and Philip Deline³

¹Institute of Particle Physics, ETH Zurich, Zurich, Switzerland, ²Institute of Geological Sciences, University of Bern, Bern, Switzerland, ³EDYTEM Lab, CNRS, Université Savoie Mont Blanc, Chambéry, France

OPEN ACCESS

Edited by:

Steven L. Forman,
Baylor University, United States

Reviewed by:

Vincenzo Amato,
University of Molise, Italy
Cristina Maria Pinto Gama,
University of Evora, Portugal

*Correspondence:

Irka Hajdas
hajdas@phys.ethz.ch

Specialty section:

This article was submitted to
Quaternary Science, Geomorphology
and Paleoenvironment,
a section of the journal
Frontiers in Earth Science

Received: 06 July 2020

Accepted: 23 December 2020

Published: 29 January 2021

Citation:

Hajdas I, Sojc U, Ivy-Ochs S, Akçar N
and Deline P (2021) Radiocarbon
Dating for the Reconstruction of the
1717 CE Triolet Rock Avalanche in the
Mont Blanc Massif, Italy.
Front. Earth Sci. 8:580293.
doi: 10.3389/feart.2020.580293

The Arp Nouva peat bog located in the upper Ferret Valley in the Mont Blanc massif was critically evaluated since published radiocarbon dates have led to controversial conclusions on the formation of this swamp. Radiocarbon dating of woody fragments from three pits of up to 1 m depth was used to discuss the question of whether the historically documented rock avalanche occurring in 1717 CE overran the peat bog or settled prior to its formation. For the deepest samples in the pits, calibrated radiocarbon ages between 1,652 and 1950 CE (95.4%; confidence level) were obtained, which fit very well into the time frame of the historical documented 1717 CE rock avalanche event. It can, therefore, be concluded that the Arp Nouva peat bog was formed by blockage of the Bella Combe torrent by the rock avalanche deposits. Furthermore, careful sample preparation with consequent separation of woody fragments from the bulk peat sample has shown that the problem of too old ¹⁴C ages can be circumvented. This work demonstrates that a combined geomorphological and geochronological approach is the most reliable way to reconstruct landscape evolution. The key to successful ¹⁴C dating is careful sample selection and the identification of the material that might not be ideal for chronological reconstructions.

Keywords: radiocarbon dating, peat, rock avalanche, Mont Blanc massif, Val Ferret, Triolet

INTRODUCTION

Not all changes in the landscape caused by mass movements can be reconstructed from historical accounts. Such records help to understand the mechanisms behind the events. Some cases, however, might remain confounded despite historical information. On September 12, 1717 CE, a rock avalanche occurred on the Mont Blanc massif's south flank in the upper part of Val Ferret (Figure 1). As described by Porter and Orombelli (1980), the written records spoke of the Triolet catastrophe, which was described as a collapse of ice and rock onto the Triolet Glacier. The sudden collapse sent masses of rocks mixed with water and ice down the valley, filling it with debris. Pastures and settlements were destroyed, and seven men were killed as well as 120 cows (Porter and Orombelli, 1980, and references therein).

This tragic rock avalanche was recounted for a few decades with the early historical report written by a local inhabitant Michael-Joseph Pennard. However, over time, the event's memories became obscured, leading to various speculations for the nature of deposits filling the valley (Porter and Orombelli, 1980 and references therein). De Saussure (1786), who visited the valley in 1781,

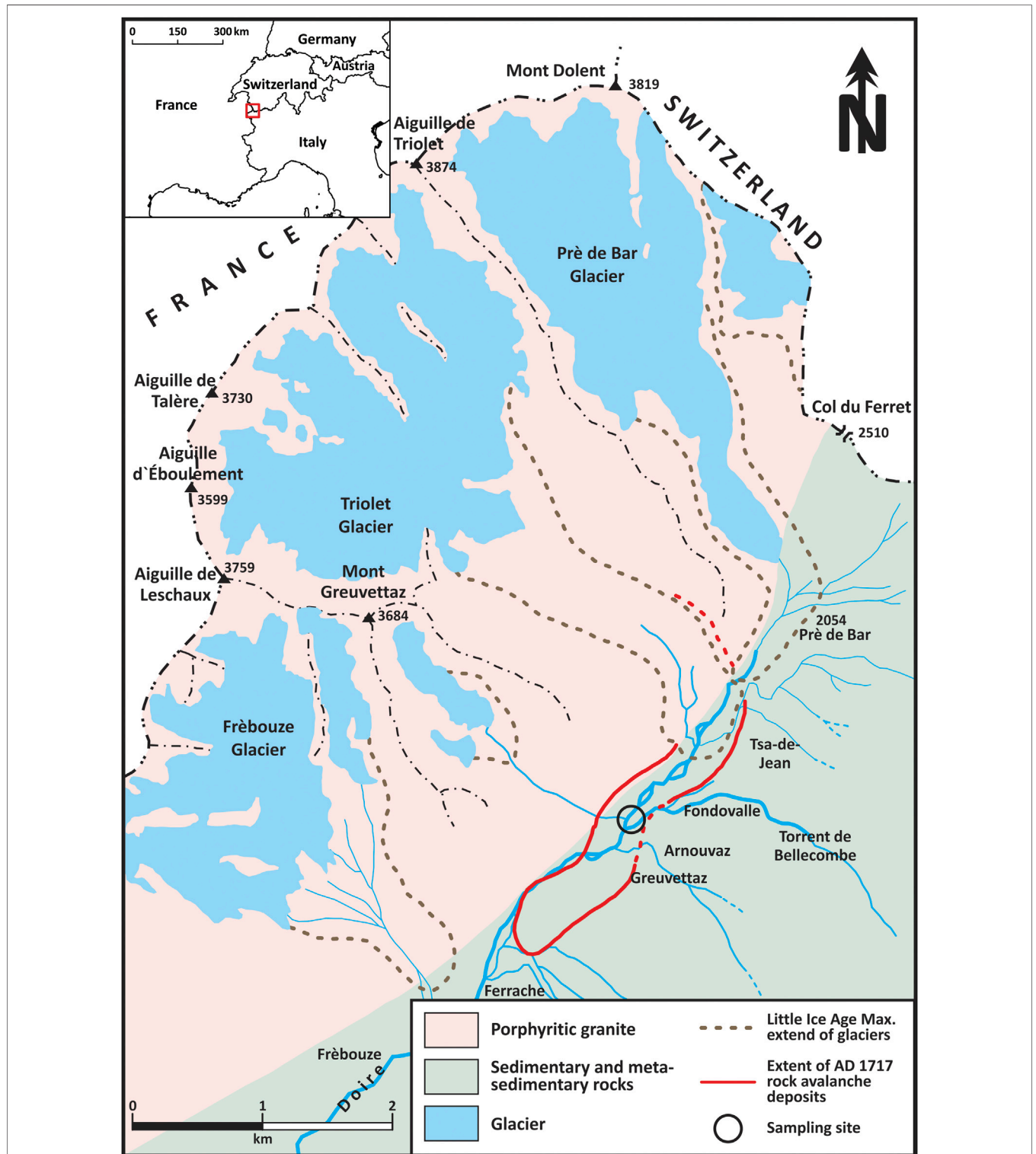


FIGURE 1 | Location of the study site, Arp Nova plain in the Ferret Valley, Italy (45.871341157559634, 7.05089817967189). Figure modified after Akçar et al. (2012).

attributed it to the rock avalanche but later in the 19th-century glacial deposits (Agassiz 1845) and a glacial outburst flood (Virgilio 1883) have been proposed. In the 20th century, both glacial and rock avalanche scenarios were active. Sacco (1918) advocated for 16th–19th century glacial drift, Zienert (1965) for late-glacial glaciers activity, and Mayr (1969) argued for mixed sources: rock avalanche and the glacial movement. Porter and Orombelli (1980) revisited the site. They described the boulder deposits as mostly angular and non-sorted, with the largest specimen as high as 20 m ($4 \times 12 \times 20$ m) on the Triolet deposit surface about 100 m for the terminus (Photo 3 in Porter and Orombelli 1980). They estimated that the 2 km-long and 500 m-wide valley was filled with debris raising its level by 4–6 m. Their estimated volume of rocks mixed with ice and snow was 6–20 million m^3 , which collapsed from the elevation of 1860 m and traveled with the velocity of 125–160 km/h, covering a horizontal distance of 7 km. To support their observations, Porter and Orombelli (1980) used chronological tools of dendrochronology and lichenometry. Most notable were the dates of trees, all of which colonized the valley after a few decades. However, the Porter and Orombelli (1980) scenario, which excludes glacial activity as a source of geomorphological changes, has been debated. Aeschlimann (1983) applied radiocarbon dating on peat sampled on the valley floor covered by the Triolet deposit and obtained an age of 885 ± 60 BP (^{14}C years Before Present; Stuiver and Polach 1977). In consequence, he prescribed the older deposits to past glacial activity. In their response, Orombelli and Porter (1988) highlighted the inconsistency of radiocarbon ages on peat. The authors pointed out the possibility of the re-deposition of old peat from nearby locations, which could have happened during the catastrophic mass movement. The potential of hard water effect has been suggested as a possible explanation for the old ages. Hard water effect (depleted ^{14}C content or too old ^{14}C ages) can be expected when plants growing underwater incorporate dissolved CO_2 of a mixed ^{14}C signal, typically older than the atmosphere (Deevey and Stuiver, 1964).

Orombelli, Porter, and Aeschlimann revisited the site in 1984 and took additional samples from the peat bog near the boulder accumulation of Arp Nouva (location P2 **Figure 1**; Orombelli and Porter, 1988). The sample was split in two and submitted to two laboratories, Paris and Zurich, which yielded different ages: 105 ± 70 BP (Paris) and $1,020 \pm 65$ BP (University of Zurich) did not resolve the debate (Orombelli and Porter, 1988). An additional sample taken from the same location in 1986 was analyzed by a ^{14}C laboratory in Rome and resulted in $2,320 \pm 150$ BP. Such a spread of ages pointed to a problem of ^{14}C dating peat at that location. Therefore the conclusions of Aeschlimann (1983), mostly based on ^{14}C age, were not supported. As Orombelli and Porter (1988) stressed, the importance of accurate interpretation of the geomorphological data cannot be underestimated, considering the geological hazard in the highly popular resort region of Mont Blanc.

In a further attempt to resolve the dispute, Deline and Kirkbride (2009) revisited the site. They proposed a smaller extent of the 1717 CE rock avalanche deposit in the valley with possibly, mixed deposits of an earlier rock avalanche that partly covered older moraines (Deline and Kirkbride, 2009). To

describe the deposits' complex geomorphology, they divided the Val Ferret into distal, central, and proximal sectors. The proximal one, Arp Nouva, has also been divided into three subsectors, with granitic boulders dispersed across the valley. A new sampling at the Arp Nouva peat bog developed onto granitic rock avalanche deposit and radiocarbon dating at ^{14}C laboratory in Lyon provided ages ranging from $1,030 \pm \text{BP}$ to modern (**Table 1** in Deline and Kirkbride (2009). Deline and Kirkbride (2009) suggested that the valley's deposits have a dual origin: Late-glacial moraines and two ca. 1,000 and 1717 CE rock avalanches for which they downscaled by ca. 50% of the volume estimate of rock debris proposed by Porter and Orombelli (1980). The differentiation between the deposition of the boulders is now possible with the cosmogenic nuclide exposure dating. The atoms of ^{10}Be are produced and accumulated in the rock exposed to cosmic rays give a measure of exposure time. In their study, Akçar et al. (2012) and Akçar et al. (2014) sampled 19 granitic boulders (1.3–6 m high) located in the upper Ferret Valley and measured the ^{10}Be concentration. 17 of the boulders resulted in apparent ages close to the 18th century. They strengthened the Porter and Orombelli scenario of the 1717 CE rock avalanche deposit covering the whole valley floor, without Lateglacial moraines. The remaining two boulders that delivered apparent ages of ca 10–11 ka were sampled from Lateglacial deposits of the Ferret glacier.

Although the analysis of ^{10}Be delivered conclusive evidence for the rock avalanche being the source of the boulders, the discrepancy observed in radiocarbon ages of peat samples from the Arp Nouva peat bog remained unresolved. Therefore, another sampling campaign was planned in 2013 and completed as part of a master thesis. Various fractions of sediment were ^{14}C dated, and wood was considered to be the best choice. Our results illustrate the importance of a clear selection and description of the carbon source used for radiocarbon dating.

STUDY SITE

The Arp Nouva in the upper Ferret Valley is located on the southern, Italian flank of the Mont Blanc massif, on the border with Switzerland and France (**Figure 1**). The Ferret Valley is one of the Aosta Valley tributaries, with Triolet and Pré de Bar glaciers at its north-east. The Triolet glacier is now a partly debris-covered cirque glacier surrounded by steep rock walls with peaks exceeding 3,500 m a.s.l., from which rockfalls detach. The upper Ferret Valley floor is characterized by chaotic boulder accumulations with several ridges on the plain of Greuvetta and the Biche forest, and the sizable morainic complex of the Triolet glacier upstream (**Figure 2**; Deline and Kirkbride, 2009; Akçar et al., 2012).

MATERIALS AND METHODS

Sampling and Sample Selection

Four spatially distributed pits were dug on Arp Nouva near the Bellecombe torrent (**Figure 3** and **Supplementary Figure S1**). The depth in the sections varied between 60–100 cm (**Figures**

TABLE 1 | Results of the AMS analysis obtained on samples selected from organic rich layers and on Total Organic Carbon TOC of various fractions of sediments. F¹⁴C is the concentration measured in the sample, corrected for fractionation and normalized to the 1950 value, and the corresponding ¹⁴C age. The δ¹³C values was measured on the graphite. The mass C is the final carbon content of the sample. The first sample contained only 70 μg of C (#) and was analyzed as CO₂ using gas ion source (GIS). Calendar ages corresponding to the measured F¹⁴C concentration. Calibration and a phase model was performed using the OxCal calibration with INTCAL13 calibration curve (Reimer et al., 2013). The postmodern ages were calibrated using the CALIBomb and with the data for the Northern Hemisphere (Hua et al., 2013; Levin et al., 2013).

Lab no.	Pit no.	Depth (cm)	Sample code	Material/Fraction	F ¹⁴ C	±1 σ	¹⁴ C age BP	±1 σ	δ ¹³ C (‰)	Mass C (mg)	Calibrated ranges CE (95% conf. level)	Phase model calibrated ranges CE (95% conf. level)
ETH-52685	2	10–13	VF-27	Woody fragments	1.249	0.004	–1787	25	–29.4	0.55	1959, 1961, 1981–1983	
ETH-52685	2	10–13	VF-27	Bulk	1.268	0.003	–1910	21	–29.70	0.99	NA	
ETH-52685	2	10–13	VF-27	<150 μm	1.208	0.004	–1,520	25	–28.60	0.38	NA	
ETH-52685	2	10–13	VF-27	150–500 μm	1.217	0.003	–1,581	21	–26.90	0.99	NA	
ETH-52686	2	28–30	VF-28	Woody fragments	0.99	0.003	84	25	–25.8	0.93	1,691–1924	1701–1931
ETH-52686	2	28–30	VF-28	Bulk	0.936	0.005	532	47	–25.60	0.58	NA	
ETH-52686	2	28–30	VF-28	<150 μm	0.641	0.004	3,573	55	–22.40	0.50	NA	
ETH-52686	2	28–30	VF-28	150–500 μm	0.914	0.005	722	41	–26.70	1.00	NA	
ETH-52687	2	43–45	VF-29	Woody fragments	0.985	0.003	124	25	–29.1	0.99	1,679–1940	1,693–1894
ETH-52688	2	74	VF-30	Woody fragments	0.983	0.003	142	28	–24.5	0.99	1,669–1946	1,667–1867
ETH-52689	2	74	VF-31	Root	1.542	0.005	–3,479	26	–28	1	1963, 1968–1970	
ETH-52681	3	53	VF-23	Needle	1.054	0.001	–423	72	–24.6	0.07 (#)	1956–1957, 2003–2012	
ETH-52683	3	53	VF-25	Woody fragments	0.978	0.003	175	25	–23.1	0.98	1,661–1950	1,661–1950
ETH-52691	4	90	VF-33	Woody fragments	0.987	0.003	104	26	–27.9	0.88	1,683–1931	
ETH-52692	4	90	VF-34	Woody fragments	0.977	0.003	191	25	–25.1	0.78	1,654–1950	
ETH-52693	4	90	VF-35	Woody fragments	0.975	0.003	205	25	–21	0.99	1,649–1950	
ETH-52691-92-93	4	90		Mean value VF 33-34-35			169	15			1,667–1950	1,671–1953
ETH-52694	4	100	VF-36	Woody fragments	0.976	0.003	194	26	–27.4	0.99	1952–1950	1,649–1806
ETH-52694	4	100	VF-36	Bulk	0.838	0.005	1,421	48	–25.4	0.56	NA	

4A–C). Overall, 36 samples were collected from undisturbed, enriched organic layers. Our study's focus was on material deposited deeper than 30 cm, which would most likely contain the oldest deposit. The sample sections showed a succession of greyish laminated fine sediment, peat layers, and gray silty gravel (Figures 4A–C).

Radiocarbon Dating

In the ETH laboratory, samples were frozen to prevent microbial activity and the building of mold and fungus. Eight samples from three profiles were chosen for the analysis (for details, see **Supplementary Figure S2**). Most of the samples contained many visible roots; thus, the selection of wood fragments was essential. They were placed in glass beakers filled with DW and left for at least 24 h to disintegrate. Occasionally, the beakers were placed for 15 min in an ultrasonic bath to speed up the process. The sieving of samples was performed using sieves of mesh 500 and 125 μm. Pieces of wood were picked from a fraction of

>500 μm. In one (V-23), a very small plant fragment (needle) was found and selected as a separate sample. One unidentified sample (V-27) of wood/root and one clearly identified as a large root (V-31) were picked for analysis (**Supplementary Figures S3–S5**). The fine fraction was saved for potential analysis. The wood fragments and one macrofossil were treated with Acid-Base-Acid to remove carbonates and humic acids, which might contaminate with old and young carbon (Hajdas, 2008). The clean material was weighed (ca. 2 mg of wood = ca. 1 mg-C) and wrapped in Sn cups for combustion in an Elemental Analyzer and a subsequent graphitization in the AGE graphitization system (Nemec et al., 2010). A set of standards (oxalic acid OXA II) and background material (phthalic anhydride) were graphitized to accompany the unknown samples' AMS analysis. The resulting graphite samples were pressed into the aluminum cathodes for the AMS isotopic analysis. The very small sample (V-23) was analyzed as CO₂ using the gas ion source (Ruff et al., 2010). The ¹⁴C/¹²C and ¹³C/¹²C ratio was measured on graphite samples

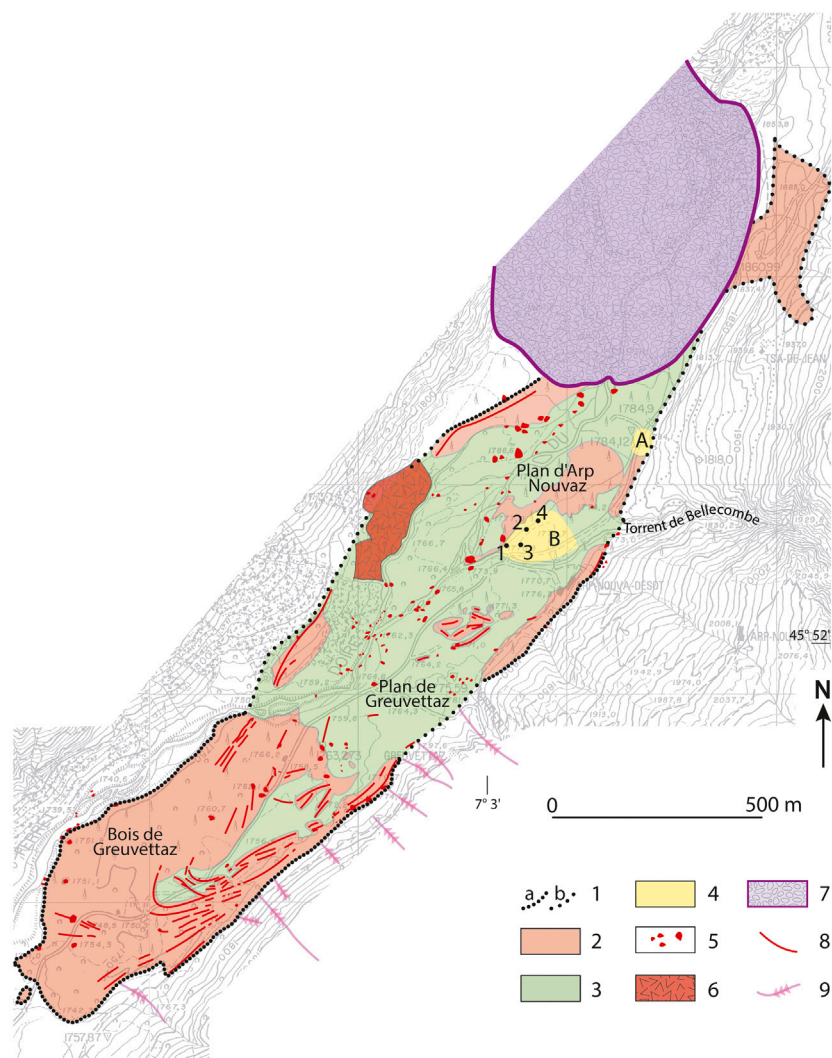


FIGURE 2 | Geomorphological map of the rock avalanche deposit of 1717 CE. 1: Limit of the deposit (**A**): recognized; (**B**): inferred; 2: chaotic block deposit; 3: alluvial deposit; 4: peat bog; 5: megablocks; 6: local rockfall deposit; 7: Holocene moraine complex of Triolet Glacier; 8: granitic ridges; 9: snow avalanche couloir; (**A**): peat bog sampled by Aeschlimann (1983), (**B**): peat bog sampled by Orombelli and Porter (1988), and Deline and Kirkbride (2009); 1–4: location of pits from this study (Topographic map: 1:10,000 with 10 m contour interval. Archivi topocartografici della Regione Autonoma Valle d'Aosta—permit no. 52–18/08/1999).

using the dedicated ^{14}C AMS instrument MICADAS (Synal et al., 2007).

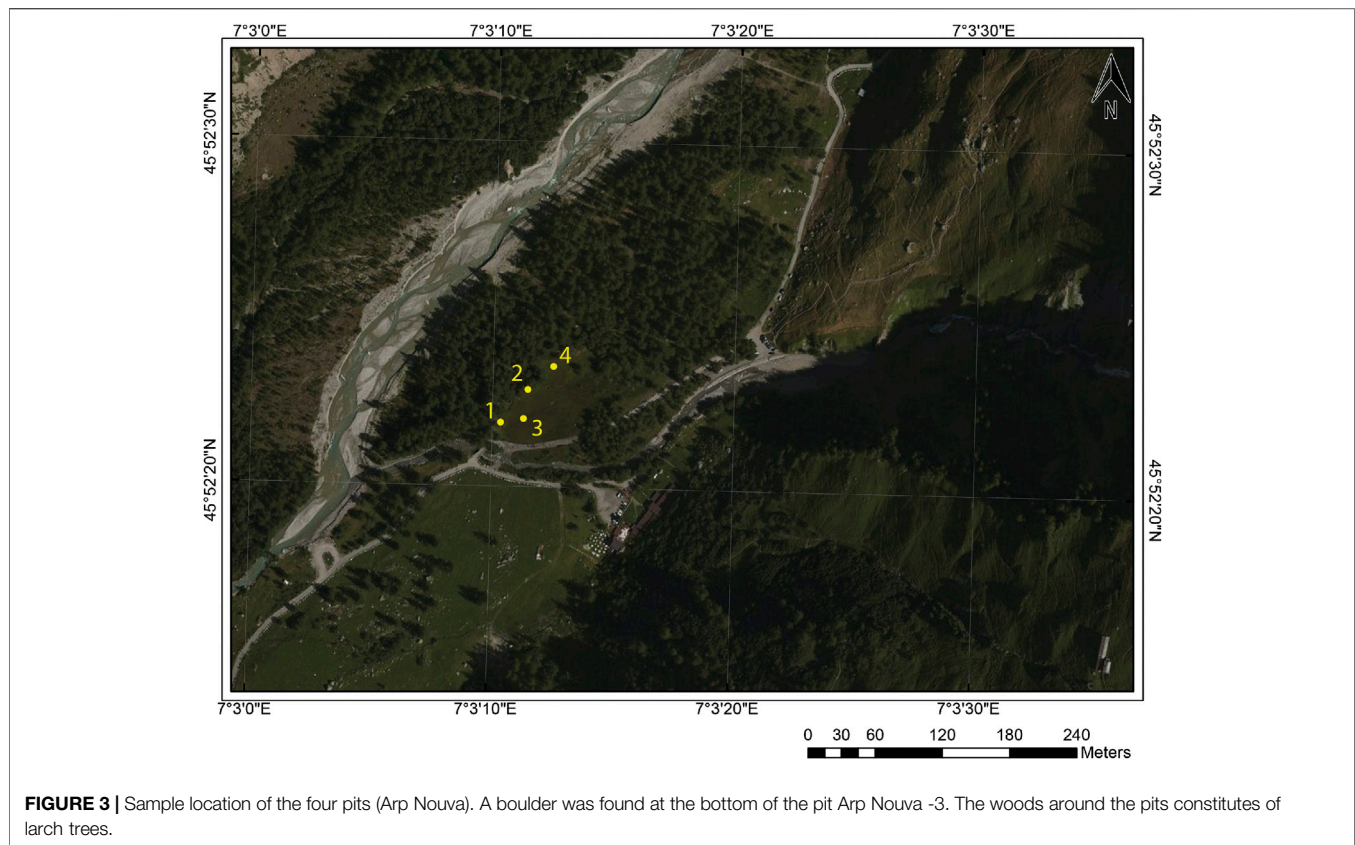
RESULTS

Table 1 summarizes the results of the AMS ^{14}C analysis. The $F^{14}\text{C}$ is a concentration of ^{14}C measured in the samples normalized and corrected for fractionation ($\delta^{13}\text{C}$). Conventional radiocarbon ages were calculated using Libby's half-life for ^{14}C (Reimer et al., 2004; Stuiver and Polach, 1977). The $\delta^{13}\text{C}$ values used for correction of $F^{14}\text{C}$ (see Reimer et al., 2004) were measured on graphite samples. Radiocarbon ages were calibrated (**Table 1**) using the OxCal software (Ramsey and Lee, 2013) and the INTCAL13 calibration curve (Reimer et al., 2013). In addition to simple calibration, a Bayesian model of OxCal was used to

calibrate all the samples with $F^{14}\text{C} < 1$ and positive ^{14}C ages (**Figures 5** and **Supplementary Figure S6**). The samples with $F^{14}\text{C} > 1$ indicate the post-1950 source of carbon (modern). The corresponding calendar ages were obtained using the Bomb Peak ^{14}C data (Hua et al., 2013; Levin et al., 2013) and the online calibration software <http://calib.org/CALIBomb/>.

DISCUSSION

The results of ^{14}C dating obtained for various fractions selected from the bulk samples indicate the different carbon pools present in the profiles. The top 30 cm show consistently modern ages, i.e., $F^{14}\text{C} > 1$ for all the subsamples of VF27 (10–13 cm). The very close agreement between sub-samples ^{14}C signature suggests no sources of old reworked carbon deposited in



the top 10 cm layer. This is not the case for samples deeper than 30 cm as in all profiles, bulk and fine fraction show presence of old carbon (V28, V29, and V36). However, the newly obtained radiocarbon ages on woody fragments selected from the peat layers in Arp Nouva show a bimodal distribution. The very small sample V-23 (tiny needle) and the V-27 and V-31 wood/root samples resulted in negative radiocarbon ages ($F^{14}\text{C} > 1$). The remaining samples had radiocarbon ages between 84 ± 25 BP and 205 ± 25 BP. The negative radiocarbon ages of the root V-31 and the wood/root fragment V-27 are not surprising as the valley's meadows are overgrown with trees (**Supplementary Figure S1**). The root V-31 was chosen on purpose to demonstrate the presence of modern carbon deep in the soil, the fact that explains the modern (negative ^{14}C age) date obtained by Deline and Kirkbride (2009). The presence of roots of all sizes and probably ages is indisputable. The second negative age was obtained on a much smaller woody fragment (V-27), which could also be a fragment of the large root, however unrecognizable using binocular investigation. The needle V-23 was selected in the hope that it might date the deposit. However, the calendar age of 1956–1957 or 2003–2012 indicates that this small macrofossil was modern. It was probably contamination introduced to the sample during the digging of the pit in 2013. The sample V-27, which was challenging to identify as either wood or root, has the post-1950 ^{14}C concentration, which would support identification as root. However, no radiocarbon ages older than 230 BP were observed

(205 ± 25 BP), and the oldest age of the wood is limited to the late 17th century, at the earliest. Although this limit slightly predates the 1717 CE rock avalanche, such an effect can be expected when wood fragments are dated. The small wood fragments found in the organic-rich sections were deposited over the years, but their origin might be the blast in 1717 CE that killed the trees. One could expect older ages of the wood if the trees grew for some time before the event. The fact that we have not yet found much older ages of wood does not exclude such a possibility. However, radiocarbon ages as old as 885 ± 60 BP (Aeschlimann, 1983) or older (Orombelli and Porter, 1988) cannot be explained by the old wood effect. Such discrepancy must have another reason, and the most probable explanation is the presence of old carbon in sediments deposited along with fresh organic matter.

Similar to Akçar et al. (2012) and Akçar et al. (2014), our results support the conclusion of Porter and Orombelli (1980) and Orombelli and Porter (1988) that the entirety of the blocky deposits was left during the 1717 CE event. The peat layers deposited in the Ferret Valley near the locations, which were investigated in the past, are now consistently dated to maximum 370 years (1,652–1950 CE; 95.4% confidence level). The radiocarbon ages on fragments of the wood date the deposit to the late 17th/early 18th century. More precise dating is not possible due to the wiggly nature of the calibration curve, which results in multiple calendar intervals corresponding to the measured ^{14}C ages of wood

collected in the hope of resolving the controversy surrounding past inconsistent radiocarbon ages. Only woody fragments were chosen for the latest analysis. Results of radiocarbon dating of such well-defined material do not show radiocarbon ages older than 250 BP. Thus, the old radiocarbon ages (885–2,320 BP) can be explained by the choice of material. Our study highlights the importance of sample selection and illustrates the potential of the radiocarbon dating method.

DATA AVAILABILITY STATEMENT

The raw data supporting the conclusions of this article will be made available by the authors, without undue reservation.

ETHICS STATEMENT

Written informed consent was obtained from the individuals for the publication of any potentially identifiable images or data included in this article.

REFERENCES

- Aeschlimann, H. (1983). *Zur Gletschergeschichte des italienischen Mont Blanc Gebietes Val Veni-Val Ferret-Ruitor*. Switzerland: Zurich University
- Agassiz, L. (1845). "Les glaciers et le terrain erratique du revers meridional du Mont-Blanc," in *Nouvelles excursions et séjours dans les glaciers et les hautes regions des Alpes de M. Agassiz et de ses compagnons de voyage*. Editor E. Desor (Neuchatel: Kissling)
- Akçar, N., Deline, P., Ivy-Ochs, S., Alfimov, V., Hajdas, I., Kubik, P., et al. (2012). The AD 1717 rock avalanche deposits in the upper Ferret Valley (Italy): a dating approach with cosmogenic Be-10. *J. Quat. Sci.* 27, 383–392. doi:10.1002/jqs.1558
- Akçar, N., Ivy-Ochs, S., Deline, P., Alfimov, V., Kubik, P. W., Christl, M., et al. (2014). Minor inheritance inhibits the calibration of the Be-10 production rate from the AD 1717 val ferret rock avalanche, European Alps. *J. Quat. Sci.* 29, 318–328. doi:10.1002/jqs.2706
- Deevey, E. S., and Stuiver, M. (1964). Distribution of natural isotopes of carbon in linsley-pond and other new-England lakes. *Limnol. Oceanogr.* 9 (1), 1–11
- Deline, P., and Kirkbride, M. P. (2009). Rock avalanches on a glacier and morainic complex in haut val Ferret (Mont Blanc massif, Italy). *Geomorphology* 103, 80–92. doi:10.1016/j.geomorph.2007.10.020
- Hajdas, I. (2008). The Radiocarbon dating method and its applications in Quaternary studies. *E&G Quat. Sci. J.* 57, 2–24. doi:10.3285/eg.57.1-2.1
- Hua, Q., Barbetti, M., and Rakowski, A. Z. (2013). Atmospheric radiocarbon for the period 1950–2010. *Radiocarbon* 55, 2059–2072. doi:10.2458/azu_js_rc.v55i2.16177
- Levin, I., Kromer, B., and Hammer, S. (2013). Atmospheric Delta (CO₂)-C-14 trend in Western European background air from 2000 to 2012. *Tellus Ser. B Chem. Phys. Meteorol.* 65 (1), 20092. doi:10.3402/tellusb.v65i0.20092
- Mayr, F. (1969). Die postglazialen Gletscherschwankungen des Mont Blanc-Gebietes. *Zeitschrift für Geomorphologie* 8 (Suppl.), 31–57
- Nemec, M., Wacker, L., and Gaggeler, H. (2010). Optimization of the graphitization process at age-1. *Radiocarbon* 52, 1380–1393. doi:10.1017/s0033822200046464
- Orombelli, G., and Porter, S. C. (1988). Boulder deposit of upper val Ferret (courmayeur, Aosta Valley) - deposit of a historic giant rockfall and debris avalanche or a late-glacial moraine. *Eclogae Geol. Helv.* 81, 365–371
- Porter, S. C., and Orombelli, G. (1980). Catastrophic rockfall of september 12, 1717 on the Italian flank of the Mont Blanc massif. *Zeitschrift für Geomorphologie Stuttgart* 24, 200–218

AUTHOR CONTRIBUTIONS

All authors listed have made a substantial, direct, and intellectual contribution to the work and approved it for publication.

ACKNOWLEDGMENTS

Participants of the field trip and helped to dig the pits: Olivia Steinemann Anne Claude, Loren Eggenschwiler, Regina Reber, Serdar Yesilyurt, André Roveyaz, Fabian Christener, and Melaine le Roy. Colleagues at the Laboratory of Ion Beam Physics, ETH for support with laboratory preparation and AMS analysis.

SUPPLEMENTARY MATERIAL

The Supplementary Material for this article can be found online at: <https://www.frontiersin.org/articles/10.3389/feart.2020.580293/full#supplementary-material>.

- Ramsey, C. B., and Lee, S. (2013). Recent and planned developments of the program oxcal. *Radiocarbon*. 55, 720–730. doi:10.1017/s0033822200057878
- Ramsey, C. B. (2017). Methods for summarizing radiocarbon datasets. *Radiocarbon* 59, 1809–1833. doi:10.1017/rdc.2017.108
- Reimer, P., Brown, T., and Reimer, R. (2004). Discussion: reporting and calibration of post-bomb C-14 data. *Radiocarbon* 46, 1299–1304. doi:10.1017/s0033822200033154
- Reimer, P. J., Bard, E., Bayliss, A., Beck, J. W., Blackwell, P. G., Ramsey, C. B., et al. (2013). Selection and treatment of data for radiocarbon calibration: an update to the international calibration (IntCal) criteria. *Radiocarbon* 55, 1923–1945. doi:10.2458/azu_js_rc.55.16955
- Ruff, M., Szidat, S., Gaggeler, H. W., Suter, M., Synal, H. A., and Wacker, L. (2010). Gaseous radiocarbon measurements of small samples. *Nucl. Instrum. Methods Phys. Res., Sect. B.* 268, 790–794. doi:10.1016/j.nimb.2009.10.032
- Sacco, F. (1918). I ghiacciai italiani del gruppo del Monte Bianco. *Bolletino del Comitato Glaciologico Italiano*, 3: 21–102.
- Saussure, H.-B. (1786). *Voyages dans les Alpes précédés d'un essai sur l'histoire naturelle des environs de Genève*. Tome second. Barde, Manguet & Compagnie, Genève, XVI-641 p.
- Stuiver, M., and Polach, H. A. (1977). Reporting of C-14 data - discussion. *Radiocarbon*. 19, 355–363
- Synal, H. A., Stocker, M., and Suter, M. (2007). MICADAS: a new compact radiocarbon AMS system. *Nucl. Instrum. Methods Phys. Res. Sect. B Beam Interact. Mater. Atoms* 259, 7–13. doi:10.1016/j.nimb.2007.01.138
- Virgilio, F. (1883). Sui recenti studi circa le variazioni periodiche dei ghiacciai. *Bolletino del Club Alpino Italiano*. 50, 50–70
- Zienert, A. (1965). Gran Paradiso—Mont Blanc: prähistorische und historische Gletscherstände. *E&G Quat. Sci. J.* 16, 202–225

Conflict of Interest: The authors declare that the research was conducted in the absence of any commercial or financial relationships that could be construed as a potential conflict of interest.

Copyright © 2021 Hajdas, Sojc, Ivy-Ochs, Akçar and Deline. This is an open-access article distributed under the terms of the Creative Commons Attribution License (CC BY). The use, distribution or reproduction in other forums is permitted, provided the original author(s) and the copyright owner(s) are credited and that the original publication in this journal is cited, in accordance with accepted academic practice. No use, distribution or reproduction is permitted which does not comply with these terms.