



# Complement Component C4 Regulates the Development of Experimental Autoimmune Uveitis through a T Cell-Intrinsic Mechanism

Lingjun Zhang<sup>1</sup>, Brent A. Bell<sup>2</sup>, Yan Li<sup>1</sup>, Rachel R. Caspi<sup>3</sup> and Feng Lin<sup>1\*</sup>

<sup>1</sup>Department of Immunology, Cleveland Clinic, Cleveland, OH, United States, <sup>2</sup>Cole Eye Institute, Cleveland Clinic, Cleveland, OH, United States, <sup>3</sup>Laboratory of Immunology, National Eye Institute, National Institutes of Health, Bethesda, MD, United States

## OPEN ACCESS

### Edited by:

Jagadeesh Bayry,  
Institut national de la santé  
et de la recherche  
médicale, France

### Reviewed by:

Dimitrios Mastellos,  
National Centre of Scientific  
Research Demokritos, Greece  
Miriam B. F. Wernick,  
Federal University of Rio  
de Janeiro, Brazil

### \*Correspondence:

Feng Lin  
linf2@ccf.org

### Specialty section:

This article was submitted to  
Molecular Innate Immunity,  
a section of the journal  
Frontiers in Immunology

**Received:** 23 June 2017

**Accepted:** 25 August 2017

**Published:** 11 September 2017

### Citation:

Zhang L, Bell BA, Li Y, Caspi RR and  
Lin F (2017) Complement  
Component C4 Regulates the  
Development of Experimental  
Autoimmune Uveitis through a  
T Cell-Intrinsic Mechanism.  
Front. Immunol. 8:1116.  
doi: 10.3389/fimmu.2017.01116

In addition to its conventional roles in the innate immune system, complement has been found to directly regulate T cells in the adaptive immune system. Complement components, including C3, C5, and factor D, are important in regulating T cell responses. However, whether complement component C4 is involved in regulating T cell responses remains unclear. In this study, we used a T cell-dependent model of autoimmunity, experimental autoimmune uveitis (EAU) to address this issue. We compared disease severity in wild-type (WT) and C4 knockout (KO) mice using indirect ophthalmoscopy, scanning laser ophthalmoscopy, spectral-domain optical coherence tomography, and histopathological analysis. We also explored the underlying mechanism by examining T cell responses in *ex vivo* antigen-specific recall assays and in *in vitro* T cell priming assays using bone marrow-derived dendritic cells, splenic dendritic cells, and T cells from WT or C4 KO mice. We found that C4 KO mice develop less severe retinal inflammation than WT mice in EAU and show reduced autoreactive T cell responses and decreased retinal T cell infiltration. We also found that T cells, but not dendritic cells, from C4 KO mice have impaired function. These results demonstrate a previously unknown role of C4 in regulating T cell responses, which affects the development of T cell-mediated autoimmunity, as exemplified by EAU. Our data could shed light on the pathogenesis of autoimmune uveitis in humans.

**Keywords:** complement, C4, autoimmune uveitis, T cells, animal models

## INTRODUCTION

Complement is an important component of the innate immune system, the primary role of which is to fight infections (1). When complement is activated through one of the three main activation pathways, i.e., the classical, alternative, and lectin pathways, membrane attack complexes are formed on target cells, resulting in direct lysis of, or damage to, the invading pathogen. At the same time, anaphylatoxins C3a and C5a are released into the fluid phase to recruit inflammatory cells to the site of complement activation and activate them to eliminate the infectious agent. In addition, the complement activation product C3b and its degradation products, iC3b and C3d, are deposited on the surface of the target cell where complement activation was initiated, facilitating phagocytosis

to remove the “opsonized” target cell or pathogen. The importance of complement in the fight against invading pathogens is demonstrated by clinical findings in patients with complement deficiency or systemic complement inhibition are susceptible to opportunistic infections (2) and by experimental studies using complement gene knockout (KO) mice (3–5). The complement component C4 is essential for both the classical and lectin pathways of complement activation (6).

In addition to its critical role in the innate immune system, complement has been found to be integrally involved in regulating adaptive immunity. For example, besides opsonizing pathogens to facilitate phagocytosis, C3d also interacts with complement receptor CR2 (CD21) on B cells to significantly increase the production of antibodies against opsonized antigens (7). When hen egg lysozyme (HEL), a model antigen, was fused to two to three copies of murine C3d, a ligand of CR2, it became 1,000- to 10,000-fold more immunogenic than HEL alone in mice (8), demonstrating a direct role of complement in regulating B cells.

Complement also directly regulates T cells (9). When antigen-presenting cells (APCs) activate T cells, complement components are produced locally by both of the interacting partners and activated to generate C3a and C5a, which provide signaling to APCs and T cells to augment T cell activation and survival (9). The alternative pathway of complement activation is important in the regulation of T cells by local complement activation (10), but whether the classical and lectin activation pathways are involved in this process remains unclear. In addition, it has been shown that locally produced complement activated intracellularly is also important for T cell activation and survival (11–13).

Autoimmune uveitis, one of the most common causes of blindness, has an unknown etiology and there is no available cure (14). Polymorphisms of various complement genes have been associated with uveitis in clinical studies, but the mechanisms are not known (15–19). Experimental autoimmune uveitis (EAU) is a primarily T cell-mediated model of posterior autoimmune uveitis, in which retina-specific T cells are primed in the periphery and migrate into the eye to initiate retinal inflammation (20). In previous studies using mice deficient in C3 (21), CD55 (a cell surface complement regulator) (22), or C3aR/C5aR (receptors for C3a/C5a) (23), we and others have provided evidence suggesting that complement can directly regulate autoreactive T cell responses in EAU, but whether C4 has a similar role in regulating T cells has not been examined.

In this study, we examined a potential role of C4 in the development of EAU using wild-type (WT) and C4 KO mice. We induced EAU in sex- and age-matched WT and C4 KO mice by immunizing them with a peptide from interphotoreceptor retinoid-binding protein (IRBP) and evaluated the development and severity of EAU using various ocular imaging techniques. We also examined T cell responses using *ex vivo* T cell recall assays and carried out *in vitro* T cell activation assays using bone marrow-derived dendritic cells (BM-DCs), isolated splenic dendritic cells, and CD4+ T cells from naïve WT and C4 KO mice to further dissect the underlying mechanism involved in this process. Our results reveal a previously unknown role of C4

in regulating the autoreactive T cell responses that lead to the development of EAU.

## REAGENTS AND METHODS

### Animals

Male and female WT and C4 KO (C57BL/6J background) mice (24), aged 8–12 weeks, were obtained from Jackson Laboratory and maintained under pathogen-free conditions in the animal facilities of the Cleveland Clinic. All animal care and experimental procedures were approved by the Institutional Animal Care and Use Committee of the Cleveland Clinic and were in accordance with the U.S. Department of Health and Human Services Guide for the Care and Use of Laboratory Animals.

### Induction of EAU

Experimental autoimmune uveitis induction was performed as described previously (20). Each mouse was injected subcutaneously at multiple sites in the back and tail base with a total of 200  $\mu$ l of emulsion consisting of equal volumes of *Mycobacterium tuberculosis* H37Ra-supplemented complete Freund's adjuvant (2.5 mg/ml) (Difco Laboratories, Inc., Detroit, MI, USA) and an aqueous solution of the human IRBP<sub>651–670</sub> peptide (LAQGAYRTAVDLESLSQLT) (2 mg/ml) (custom synthesized by GenScript USA Inc., Piscataway, NJ, USA). A single dose of 500 ng of pertussis toxin (List Biologic Laboratories, Inc., Campbell, CA, USA) was injected intraperitoneally on the same day.

### Clinical and Histopathological Scoring

After immunization, clinical manifestations were examined daily using a binocular indirect ophthalmoscope (Keeler Instruments, Inc., Broomall, PA, USA). The pupils were dilated with a mixed ophthalmic solution of 0.5% tropicamide and 1.25% phenylephrine hydrochloride and disease severity was scored on a scale of 0–4, according to published criteria (20).

On day 21 after immunization, the mice were euthanized. For histopathological evaluation, whole eyes were collected and fixed in 10% formaldehyde/PBS buffer for 24 h and the fixed tissues embedded in paraffin. Sections (5  $\mu$ m) were cut through the pupil and optic nerve axis and processed for H&E staining, then retinal histopathological changes were graded on a scale of 0–4 according to previously published scoring criteria (20).

### Retinal Imaging Analyses

Retinal imaging was performed as described previously (23) using cSLO, SD-OCT, and TEFI under general anesthesia. A cSLO (Heidelberg Retina Angiograph II; Heidelberg Engineering, Carlsbad, CA, USA) was used to collect both reflectance and fluorescence information from the posterior segment. The SD-OCT system used was a 840 HR SDOIS (Biotigen, Inc., Morrisville, NC, USA) with a central operating wavelength of ~840 nm and an in-depth, axial resolution of ~6  $\mu$ m. Conventional visible light fundus images were collected using a custom-fabricated TEFI apparatus (25). Number of hyper-reflective foci in vitreous chamber of OCT images areas were quantitated using ImageJ

software (<http://imagej.nih.gov/ij/>, National Institutes of Health, Bethesda, MD, USA).

### Ex Vivo T Cell Recall Assays

T cell recall assays were performed on day 21. For each of the immunized WT and C4 KO mice,  $4 \times 10^5$  splenocytes were cultured in 96-well round-bottomed microtiter plates in 100  $\mu$ l of complete RPMI 1640 medium in the presence or absence of 20  $\mu$ g/ml of peptide IRBP<sub>651–670</sub> or a non-relevant peptide (ovalbumin OVA<sub>323–339</sub>, Genscript, NJ, USA) for 72 h, then the supernatants were collected and interferon (IFN) $\gamma$  and interleukin (IL)-17 levels measured using ELISA kits (BioLegend, San Diego, CA, USA).

### BM-DC Differentiation Assay

Following a previously established protocol (26), BM cells were harvested from the femur of WT and C4 KO mice and cultured for 48 h in complete medium containing 10 ng/ml of granulocyte-macrophage colony-stimulating factor (GM-CSF) and 100 U/ml of IL-4 (Peprotech, Rocky Hill, NJ, USA), then, non-adherent cells were gently removed and the medium replaced with fresh medium containing the same concentrations of GM-CSF and IL-4. Double-positive cells (DCs) were harvested on day 5 and DC differentiation was assessed by counting MHC II and CD11c DCs using a flow cytometer.

### Differentiated DC Function Assay

The function of the differentiated DCs was compared by measuring their ability to activate antigen-specific T cells. In brief, T cells were enriched from splenocytes of OTII mice (Jackson Laboratory) using nylon wool and labeled with carboxyfluorescein succinimidyl ester (CFSE) according to the manufacturer's instruction (Thermo Fisher Scientific, Waltham, MA, USA), then were cocultured with the same numbers of differentiated WT or C4 KO DCs (10:1 ratio) in the presence or absence of 2  $\mu$ g/ml of peptide OVA<sub>323–339</sub> for 72 h. The proliferation of the activated T cells was then measured by CFSE dilution (27) using flow cytometry, while IFN $\gamma$  production by the activated T cells were measured by analyzing the culture supernatants using ELISA (Biolegend) following the manufacturer's recommended protocol.

### Splenic DCs Isolation and Function Assay

Splenic DCs from WT and C4 KO mice were isolated using a mouse pan-DC enrichment kit (Stemcell Technologies Inc., Cambridge, MA, USA) following the manufacturer's instructions. The isolated splenic DCs were matured with 2  $\mu$ g/ml LPS 4 h before being cocultured with CFSE-labeled CD4<sup>+</sup> T cells isolated from OTII mouse splenocytes using a mouse CD4<sup>+</sup> T cell enrichment kits (Stemcell Technologies Inc.) at a ratio of 10:1 (T cells: DCs) in the absence or presence of 2  $\mu$ g/ml of OVA<sub>323–339</sub> peptide for 72 h. CD4<sup>+</sup> T cells isolated by this protocol usually reaches >97% purity based on flow cytometric analysis. The proliferation of the DC-activated T cells was analyzed by flow cytometry, and levels of IFN $\gamma$  produced by the activated T cells in the culture supernatants were measured using ELISA.

### In Vitro T Cell Activation, Proliferation, and Apoptosis Assays

CD4<sup>+</sup> T cells were isolated as described above according to the manufacturer's instructions, then,  $4 \times 10^5$  of the purified T cells were seeded in 96-well round-bottomed microtiter plates precoated overnight with 5  $\mu$ g/ml of anti-mouse CD3 mAb (Biolegend, CA, USA) in the presence of 1  $\mu$ g/ml of anti-mouse CD28 mAb and 1,000 U/ml of mouse IL-2 (Peprotech, Rocky Hill, NJ, USA).

For the activation assay, T cells were collected and stained with a PE-labeled anti-CD69 mAb for 5 h. For the T cell proliferation assay, 10 nM BrdU was added to the plates for 48 h, then incorporated BrdU was detected using a BrdU ELISA kit (BD Biosciences, San Jose, CA, USA) after DNase treatment according to the manufacturer's protocol. For the apoptosis assay, cells were collected and stained with Annexin V and PI as recommended by the manufacturer (BD Biosciences, San Jose, CA, USA).

### Statistical Analysis

GraphPad Prism 6 (GraphPad Software, Inc., La Jolla, CA, USA) was used for data analysis. Data were expressed as means  $\pm$  SEM unless labeled otherwise. The EAU clinical scores were assessed by two-way ANOVA. Two sets of data were compared by Student's *t*-test and three sets of data were analyzed by one-way ANOVA. *p*-Values less than 0.05 were considered significant.

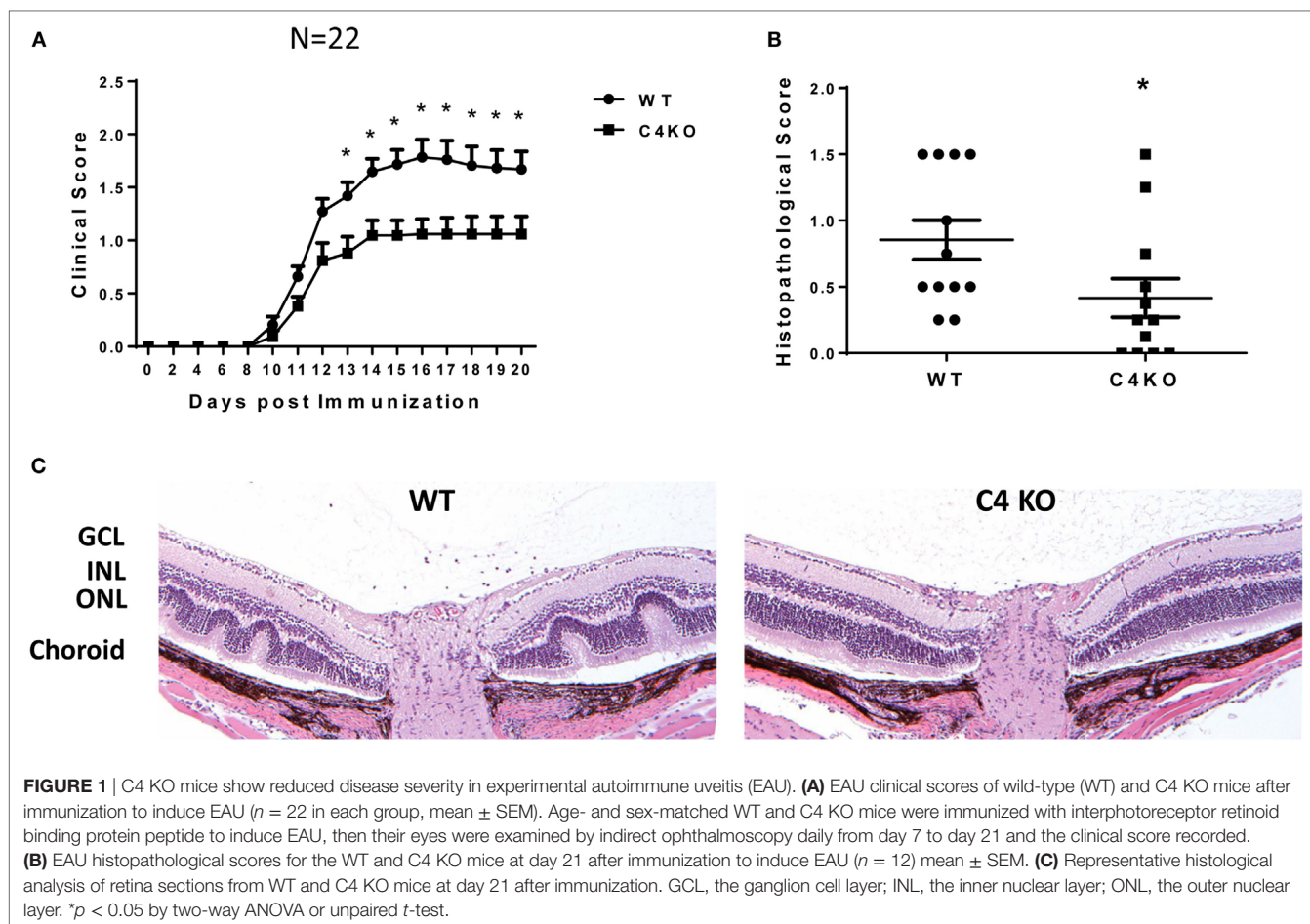
## RESULTS

### C4 KO Mice Exhibit Lower EAU Clinical Scores and Retinal Histopathological Scores than WT Mice after Immunization

To explore the potential role of C4 in the pathogenesis of EAU, we first immunized age- and sex-matched WT and C4 KO mice with IRBP peptide in CFA to induce EAU following a previously published protocol. We followed the development of EAU daily by indirect ophthalmoscopy from day 7 to day 20 after immunization, then euthanized the mice to prepare ocular sections for histopathological scoring and other assays. We found that, compared to clinical scores of  $\sim$ 1.5–1.8 in WT mice at day 14 after EAU induction, those in the C4 KO mice were significantly lower, with an average score of  $\sim$ 1.0 (Figure 1A) and that histopathological scores for the ocular sections on day 21 were also significantly lower in the C4 KO mice ( $0.41 \pm 0.15$  vs  $0.85 \pm 0.15$ ) (Figures 1B,C).

### C4 KO Mice Develop Milder Retinal Pathological Features after EAU Induction

In addition to the above tests, we used three ocular imaging techniques, TEFI, cSLO, and SD-OCT, to evaluate the severity of EAU in the WT and C4 KO mice on day 15 after disease induction. These studies showed multiple retinal pathologic changes in the WT mice, including focal and linear chorioretinal lesions observed by TEFI (Figure 2A) and increased hyper-reflective features adjacent to the retinal vessels in the inner retina and around the optic nerve in the outer retina observed by cSLO



(Figures 2C–F). SD-OCT also revealed inflammatory cell infiltration in the vitreous chamber, retinal infoldings, and a disrupted inner segment/outer segment band in the WT mice (Figure 2K). All of these features were much less obvious in the C4 KO mice (Figures 2B,G–J,L). Hyper-reflective foci in vitreous cavity are likely cells and/or cellular aggregates that have infiltrated into the vitreous. We quantitated these foci and found that C4 KO mice showed significantly lower numbers of these foci in the vitreous cavity than WT mice in EAU ( $p = 0.003$ , Figure 2M).

### C4 KO Mice Develop Lower IBRP-Specific Th1 and Th17 Responses

We used *ex vivo* antigen-specific recall assays to determine pathogenic Th1 and Th17 responses after EAU induction. We collected splenocytes from WT and C4 KO mice on day 21, then incubated the cells with or without 20  $\mu\text{g/ml}$  of IRBP peptide or a non-relevant peptide, OVA<sub>323–339</sub>, for 72 h, then measured levels of IFN $\gamma$  and IL-17 in the culture supernatants by ELISA. These *ex vivo* antigen-specific T cell recall assays showed that IRBP-specific T cells from immunized C4 KO mice produced only  $54.21 \pm 8.58$  ng/ml of IFN $\gamma$  and  $9.10 \pm 1.81$  ng/ml of IL-17 compared to  $94.63 \pm 15.96$  ng/ml of IFN $\gamma$  and  $14.72 \pm 2.05$  ng/ml of IL-17 produced by cells from WT mice (Figures 3A,B). These

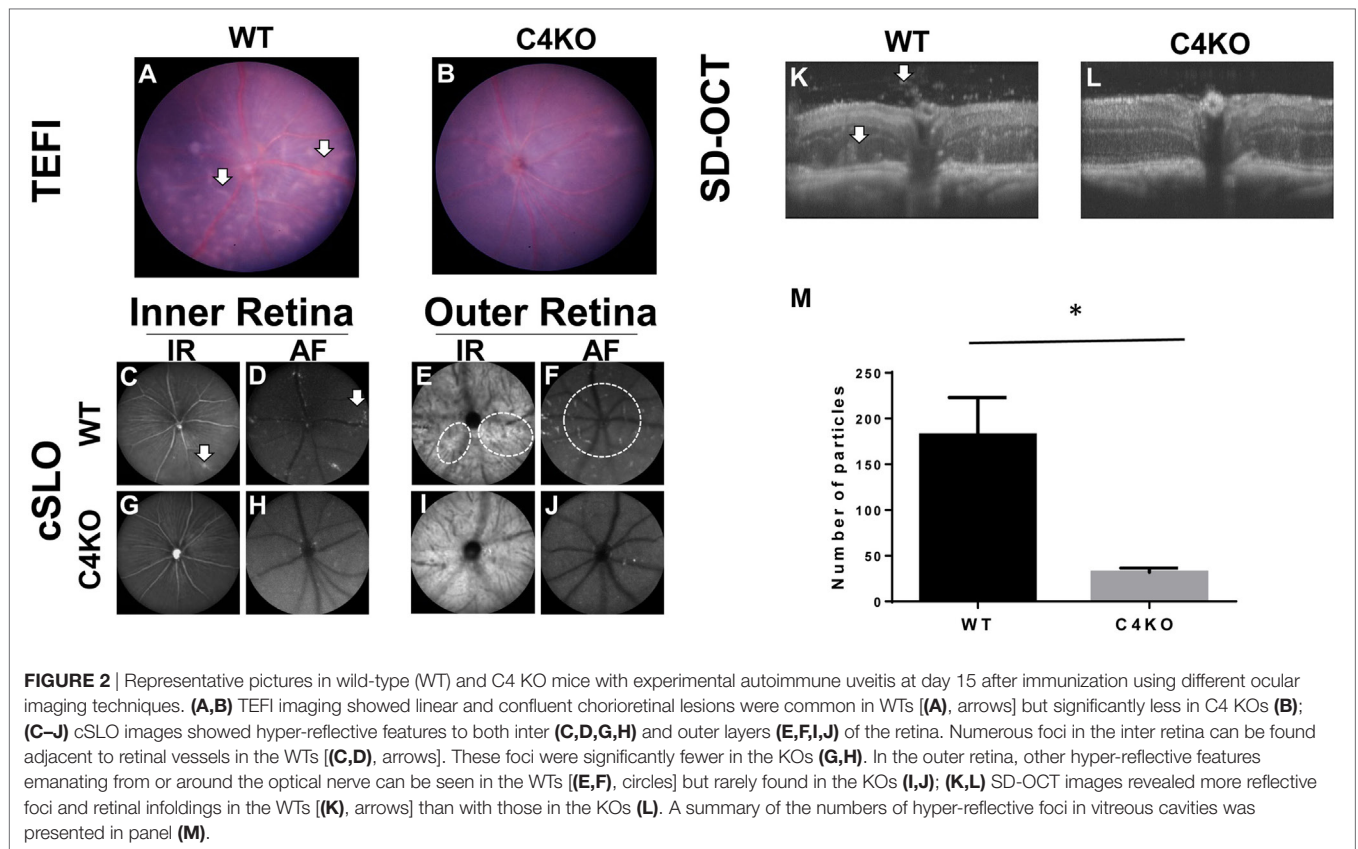
data suggest that pathogenic Th1 and Th17 responses were significantly reduced in C4 KO mice compared to WT mice in EAU.

### C4 KO Mice with EAU Have Reduced Numbers of Ocular-Infiltrating CD4+ T Cells than WT Mice with EAU

Since ocular infiltration of lymphocytes and other inflammatory cells is a hallmark of EAU, we compared numbers of ocular-infiltrating CD4+ cells in WT and CD4 KO mice with EAU. In brief, at day 21 after immunization, we treated enucleated eyes from five mice from each group with 1 mg/ml collagenase, then pooled the resultant single cells together and incubated them with an anti-CD4 mAb and analyzed the stained cells by flow cytometry. As shown in Figures 3C,D, 0.2% of the cells from the eyes of WT mice with EAU were CD4+, but this value was only 0.06% in the eyes of CD4 KO mice with EAU, showing that C4 KO mice have reduced ocular T cell infiltration in EAU.

### DCs from Naïve C4 KO Mice and WT Mice Stimulate Similar Antigen-Specific T Cell Responses

Our *in vivo* and *ex vivo* studies above show that pathogenic T cell responses were reduced in EAU C4 KO vs EAU WT mice. Since



DCs are known to locally produce C4 (28), it is possible that absence of C4 in DCs could impair DC differentiation and/or the function of the differentiated DCs. To explore the mechanism underlying attenuated pathogenic T cell responses in C4 KO mice with EAU, we generated DCs from the BM of naïve WT or C4 KO mice and assessed the differentiation of DCs by quantifying the resultant MHC II/CD11c DCs using flow cytometry and found no significant difference (Figures 4A,B). We then incubated the same numbers of the differentiated WT or C4 KO DCs with the CFSE-labeled T cells from naïve OTII mice in the presence or absence of peptide OVA<sub>323–339</sub> for 72 h, then measured T cell proliferation by flow cytometry and IFN $\gamma$  levels in the culture supernatants by ELISA. As shown in Figure 4C, OTII T cells cocultured with WT or C4 KO DCs showed similar proliferation after OVA stimulation. In addition, Figure 4D shows that, while IFN $\gamma$  was barely detectable in DC/OTII T cell cocultures in the absence of OVA peptide, comparable IFN $\gamma$  levels was produced by T cells stimulated with either WT or C4 KO DCs. In addition to the BM-derived DCs, we also studied the splenic DCs from WT and C4 KO mice and got similar results (Figures 4E,F). These data suggest that C4 deficiency in DCs is not causally involved in the reduced antigen-specific T cell response seen in EAU C4 KO mice.

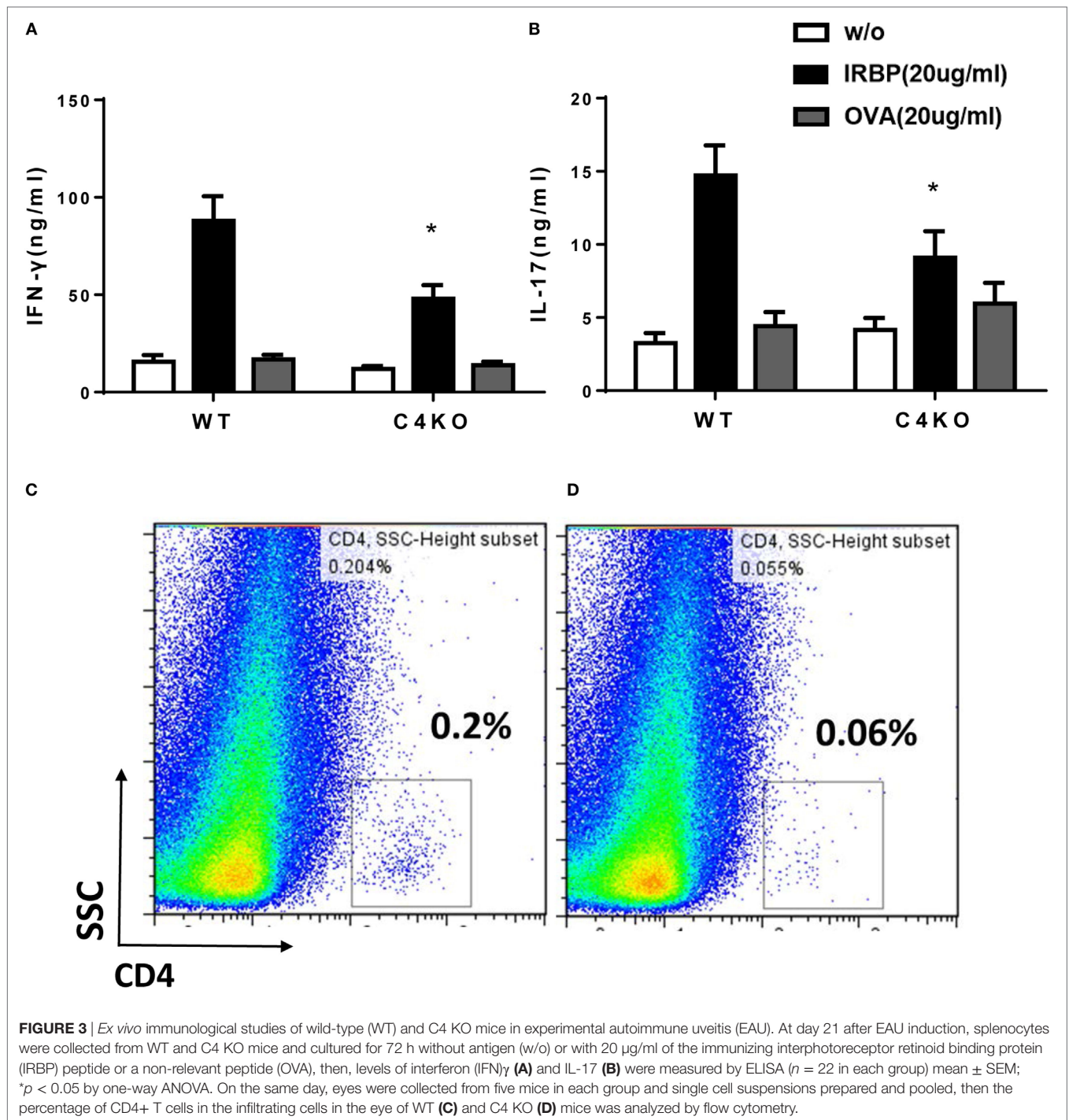
### CD4<sup>+</sup> T Cells from Naïve C4 KO Mice Have Impaired Function

To assess the impact of C4 deficiency from the T cell side, we purified CD4<sup>+</sup> T cells from naïve WT or C4 KO mice, then activated

them with anti-CD3 and anti-CD28 mAbs, together with IL-2, then evaluated T cell activation after 5 h by comparing levels of the T cell activation marker, CD69, and investigated the proliferation of the activated T cells after 24 h (BrdU incorporation) and their survival after 48 h (Annexin V and PI staining). Finally, we measured IFN $\gamma$  levels in the culture supernatants after 48 and 72 h by ELISA. Figures 5A,B show that, after 5 h of activation, CD69 levels were significantly lower on C4 KO T cells than on WT T cells. In addition, the proliferation of activated C4 KO T cells was reduced, as indicated by a significantly lower percentage of BrdU<sup>+</sup> cells in the C4 KO T cells than in the activated WT T cells at 24 h (Figures 6A,B), and there were significantly more apoptotic (Annexin V<sup>+</sup>) and dead (PI<sup>+</sup>) C4 KO T cells than WT T cells at 48 h after activation (Figure 7). Finally, activated WT T cells produced higher levels of IFN $\gamma$  than activated C4 KO T cells at both 48 and 72 h (48 h:  $21.56 \pm 1.39$  vs  $14.63 \pm 1.36$ , 72 h:  $54.33 \pm 1.73$  vs  $37.94 \pm 3.34$  ng/ml) (Figure 8). These results demonstrate that T cells from naïve C4 KO mice show reduced activation, proliferation, survival, and inflammatory cytokine production, which could explain the decreased IRBP-specific T cell responses in C4 KO mice in EAU.

### DISCUSSION

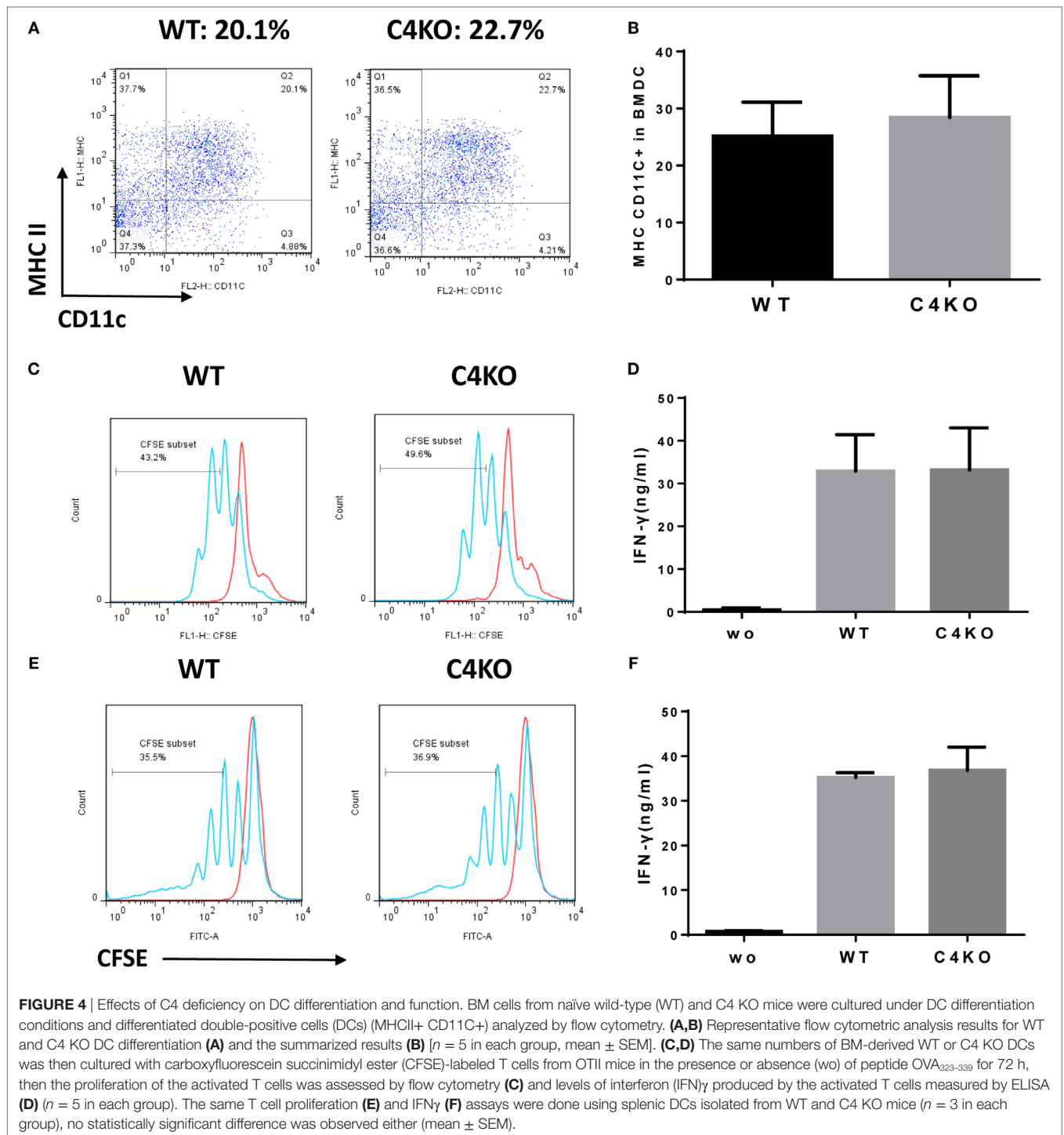
In this study, we examined the potential role of C4 in EAU by comparing disease severity in age- and sex-matched WT and C4 KO mice after EAU induction using various ocular imaging,



histopathological, and immunological analyses. Overall, we found that mice lacking C4 exhibited a milder EAU response than the WT. In accordance with the attenuated ocular inflammation seen in the C4 KO mice after immunization, our *ex vivo* IRBP-specific recall experiments and ocular CD4 $^{+}$  T cell infiltration analysis showed reduced development of IRBP-specific IFN $\gamma$ - and IL-17-producing T cells and decreased numbers of infiltrating CD4 $^{+}$  cells in the eyes of C4 KO mice in EAU. The *in vitro* mechanistic studies showed that DC differentiation in naïve WT

and C4 KO mice was similar and that the differentiated DCs from naïve WT and C4 KO mice had a comparable ability to activate antigen-specific T cells. Interestingly, CD4 $^{+}$  T cells from naïve C4 KO mice showed attenuated activation and reduced proliferation, survival, and inflammatory cytokine production after activation.

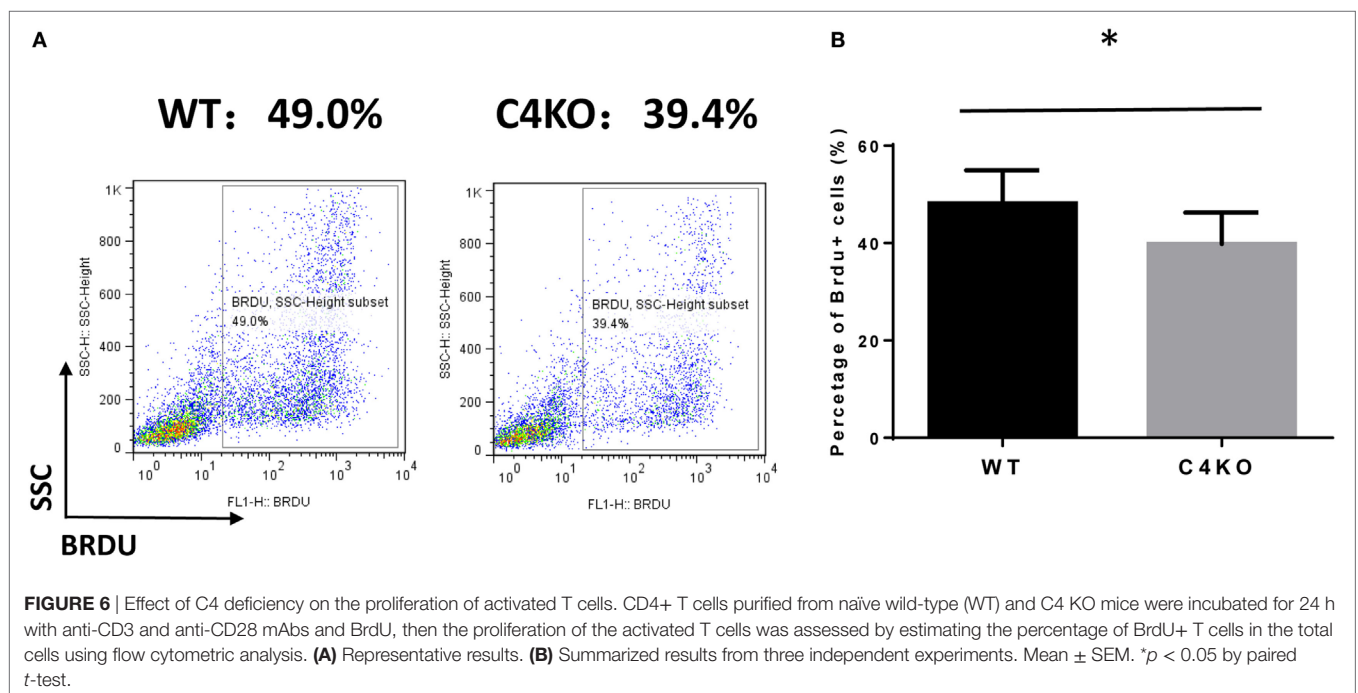
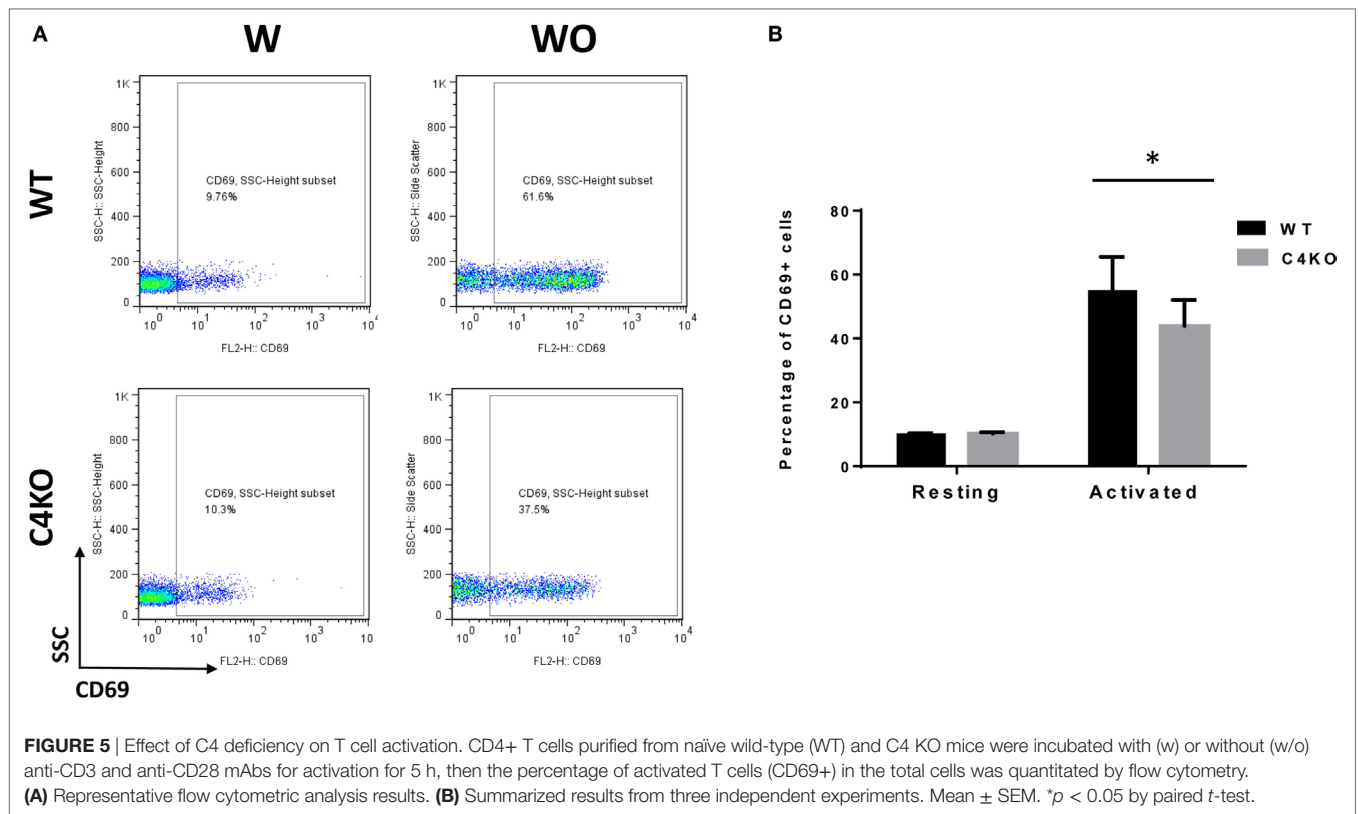
The role of C4 in autoimmune diseases is paradoxical. While the majority (>75%) of patients deficient in C4 develop lupus-like autoimmune diseases, some of which are associated with autoimmune uveitis (29, 30), suggesting that C4 is protective, it has also



been reported that C4 levels are significantly elevated in patients with active Behçet's disease (BD) (31), another autoimmune disease that frequently involves uveitis, compared to BD patients in remission or non-BD controls, suggesting that C4 is pathogenic. It has also been found that, although C4 deficiency in mice leads to the development of autoantibodies (32), paradoxically, these C4 KO mice also show lower B cell responses after virus infection or immunization (33, 34), potentially due to impaired stimulation

of memory B cell responses. Interestingly, although a role for C4 in the humoral response in mice seems to have been established, whether C4 directly regulates T cells remains unclear. Our *ex vivo* antigen-recall assay and T cell activation assay results show, for the first time, that C4 is required for normal T cell activation, proliferation, and survival.

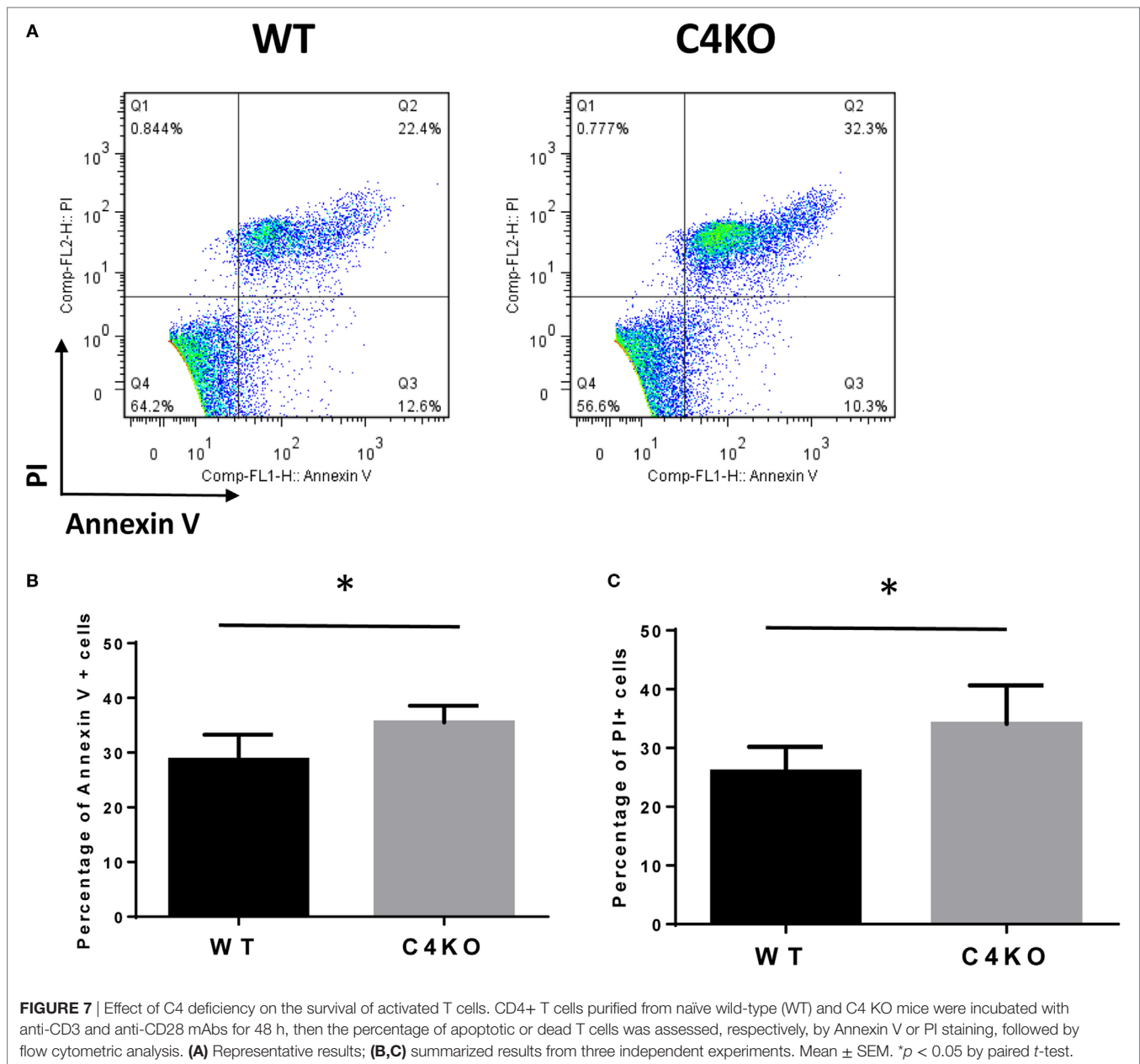
Our results showing that C4 KO mice develop milder EAU, a primarily T cell-dependent autoimmune disease model, than



WT mice based on various ocular imaging examinations and retinal histopathological analyses demonstrate a previously unappreciated role of C4 in the development of EAU and, potentially, autoimmune uveitis. These results, together with previous reports by ourselves and others showing that complement

components accumulated adjacent to sites of inflammation in EAU (35), that C3 KO mice (21) and C3aR/C5aR KO mice (23) develop less severe EAU than WT mice, and that treating WT mice with complement inhibitors, such as recombinant DAF (22), soluble Crry (21), or an anti-C5 mAb (36), reduces the severity



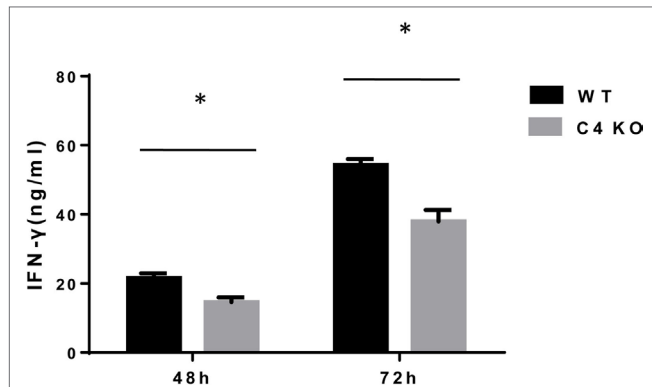


of EAU, confirm a critical role of the complement system in the pathogenesis of EAU and raise the possibility that it may influence its human counterpart, autoimmune uveitis.

Complement activation by the alternative pathway has been shown to directly regulate T cell responses (10). Factor B KO mice are resistant to induction of experimental autoimmune encephalomyelitis (EAE), a primarily T cell-mediated model of multiple sclerosis, and show reduced T cell responses (37), inhibition of the alternative pathway using an anti-factor B mAb suppresses T cell responses in experimental autoimmune anterior uveitis in rats (38), and, more directly, splenocytes from factor D KO mice stimulate significantly reduced T cell responses in a mixed lymphocyte reaction assay (10). Even though the role of the alternative pathway of complement activation in regulating

T cell responses has been well established, whether the other two pathways, the classical and the lectin pathways, also play a role in regulating T cells was not known.

C4 is critical for both the classical and lectin pathways of complement activation. In humans, C4 gene copy number variance, polymorphisms, and blood concentrations of C4 protein have been associated with autoimmune diseases (39), including systemic lupus erythematosus, a disease in which both autoreactive T and B cells are integrally involved in the pathogenesis (40). In agreement with clinical study results, C4 KO mice have been found to have a profound deficit in antibody responses against a T cell-dependent antigen (41) and are also resistant to induction of experimental autoimmune myasthenia gravis (42), a T cell-dependent and B cell-mediated disease. However, similar disease



**FIGURE 8** | Effect of C4 deficiency on cytokine production by activated T cells. CD4<sup>+</sup> T cells purified from naïve wild-type (WT) and C4 KO mice were incubated for 48 or 72 h with anti-CD3 and anti-CD28 mAbs, then interferon (IFN) $\gamma$  levels in the culture supernatants were measured by ELISA after 48 or 72 h.  $n = 3$  in each group, mean  $\pm$  SEM. \* $p < 0.05$  by  $t$ -test.

severity was reported between C4 KO mice and WT mice after immunization with peptide MOG<sub>35-55</sub> to induce EAE (43), suggesting that C4 is not involved in regulating autoreactive T cells in this model; unfortunately, no direct T or B cell assays were described in this report.

C4 can be locally produced by different kinds of APCs, including DCs (28), monocytes (44), and macrophages (45), suggesting that locally produced C4, like other complement components locally produced by APCs, e.g., factor D, C3, and C5, could be integrally involved in regulating T cells. However, our results showing that C4 KO and WT DCs stimulated similar levels of inflammatory cytokine production by antigen-specific T cells do not support this hypothesis. In fact, our results using WT and C4 KO DCs are consistent with those in previous studies showing that WT and C4 KO macrophages stimulate comparable levels of proliferation of, and IFN $\gamma$  production by, WT T cells in a mixed lymphocyte reaction assay (46), suggesting that C4 locally produced by APCs is not essential for efficient T cell activation.

In addition to APCs, T cells also locally produce some complement components, such as C3, to directly regulate T cell

responses (47). However, we failed to detect any C4 transcript in purified mouse T cells by RT-PCR (data not shown) and there is no evidence in the literature that T cells locally produce C4. Nevertheless, we found that T cells from naïve C4 KO mice showed reduced activation and decreased proliferation, survival, and IFN $\gamma$  production after activation compared to T cells from naïve WT mice. These results suggest that T cells from C4 KO mice might be “educated” indirectly by the absence of C4 *in vivo*. How T cells are “educated” differently *in vivo* in the absence of C4 warrants further study.

In summary, by studying EAU development in WT and C4 KO mice, we found that retinal inflammation was attenuated and autoreactive T cell responses reduced in the absence of C4 using various ocular imaging, histopathological and immunological assays. Our mechanistic studies suggest that lack of C4 on DCs has no direct effect on the regulation of autoreactive T cell responses, but its absence on other cells might do so indirectly by an effect on the “education” of T cells.

## AUTHOR CONTRIBUTIONS

LZ, BB, and YL performed the experiments, analyzed data, and edited the manuscript. RC analyzed data and reviewed/edited the manuscript. FL designed the experiments, analyzed the data, and prepared the manuscript.

## FUNDING

This work was supported in part by grants from the NIH (EY025373, EY025585, and EY11373), and grants from The Foundation Fighting Blindness, the Wolf Family Foundation, the Llura and Gordon Gund Foundation, an unrestricted grant from Research to Prevent Blindness.

## SUPPLEMENTARY MATERIAL

The Supplementary Material for this article can be found online at <http://journal.frontiersin.org/article/10.3389/fimmu.2017.01116/full#supplementary-material>.

## REFERENCES

- Ricklin D, Hajishengallis G, Yang K, Lambris JD. Complement: a key system for immune surveillance and homeostasis. *Nat Immunol* (2010) 11:785–97. doi:10.1038/ni.1923
- Zipfel PF. Complement and immune defense: from innate immunity to human diseases. *Immunol Lett* (2009) 126:1–7. doi:10.1016/j.imlet.2009.07.005
- Li E, Tako EA, Singer SM. Complement activation by *Giardia duodenalis* parasites through the lectin pathway contributes to mast cell responses and parasite control. *Infect Immun* (2016) 84:1092–9. doi:10.1128/IAI.00074-16
- Toledo RG, Da Silva WD, Calich VL, Kipnis TL. Mannose-binding lectin complement pathway plays a key role in complement activation by *Paracoccidioides brasiliensis*. *Mol Immunol* (2010) 48:26–36. doi:10.1016/j.molimm.2010.09.015
- Yuste J, Ali S, Sriskandan S, Hyams C, Botto M, Brown JS. Roles of the alternative complement pathway and C1q during innate immunity to *Streptococcus pyogenes*. *J Immunol* (2006) 176:6112–20. doi:10.4049/jimmunol.176.10.6112
- Yang Y, Chung EK, Zhou B, Lhotta K, Hebert LA, Birmingham DJ, et al. The intricate role of complement component C4 in human systemic lupus erythematosus. *Curr Dir Autoimmun* (2004) 7:98–132. doi:10.1159/000075689
- Carroll MC. The role of complement and complement receptors in induction and regulation of immunity. *Annu Rev Immunol* (1998) 16:545–68. doi:10.1146/annurev.immunol.16.1.545
- Dempsey PW, Allison ME, Akkaraju S, Goodnow CC, Fearon DT. C3d of complement as a molecular adjuvant: bridging innate and acquired immunity. *Science* (1996) 271:348–50. doi:10.1126/science.271.5247.348
- Heeger PS, Kemper C. Novel roles of complement in T effector cell regulation. *Immunobiology* (2012) 217:216–24. doi:10.1016/j.imbio.2011.06.004
- Heeger PS, Lalli PN, Lin F, Valujskikh A, Liu J, Muqim N, et al. Decay-accelerating factor modulates induction of T cell immunity. *J Exp Med* (2005) 201:1523–30. doi:10.1084/jem.20041967
- Liszewski MK, Kolev M, Le Fric G, Leung M, Bertram PG, Fara AF, et al. Intracellular complement activation sustains T cell homeostasis and mediates effector differentiation. *Immunity* (2013) 39:1143–57. doi:10.1016/j.immuni.2013.10.018

12. Freeley S, Kemper C, Le Friec G. The “ins and outs” of complement-driven immune responses. *Immunol Rev* (2016) 274:16–32. doi:10.1111/imr.12472
13. Arbore G, Kemper C, Kolev M. Intracellular complement – the complosome – in immune cell regulation. *Mol Immunol* (2017). doi:10.1016/j.molimm.2017.05.012
14. Becker MD, Adamus G, Davey MP, Rosenbaum JT. The role of T cells in autoimmune uveitis. *Ocul Immunol Inflamm* (2000) 8:93–100. doi:10.1076/0927-3948(200006)821-0FT093
15. Yang M, Fan JJ, Wang J, Zhao Y, Teng Y, Liu P. Association of the C2-CFB locus with non-infectious uveitis, specifically predisposed to Vogt-Koyanagi-Harada disease. *Immunol Res* (2016) 64:610–8. doi:10.1007/s12026-015-8762-x
16. Dai ML, Huang XF, Wang QF, Cai WJ, Jin ZB, Wang Y. CFI-rs7356506 polymorphisms associated with Vogt-Koyanagi-Harada syndrome. *Mol Vis* (2016) 22:9–17.
17. Hou S, Qi J, Liao D, Zhang Q, Fang J, Zhou Y, et al. Copy number variations of complement component C4 are associated with Behçet’s disease but not with ankylosing spondylitis associated with acute anterior uveitis. *Arthritis Rheum* (2013) 65:2963–70. doi:10.1002/art.38116
18. Thompson IA, Liu B, Sen HN, Jiao X, Katamay R, Li Z, et al. Association of complement factor H tyrosine 402 histidine genotype with posterior involvement in sarcoid-related uveitis. *Am J Ophthalmol* (2013) 155:1068–74. e1. doi:10.1016/j.ajo.2013.01.019
19. Wakefield D, Buckley R, Golding J, McCluskey P, Abi-Hanna D, Charlesworth J, et al. Association of complement allotype C4B2 with anterior uveitis. *Hum Immunol* (1988) 21:233–7. doi:10.1016/0198-8859(88)90032-8
20. Agarwal RK, Silver PB, Caspi RR. Rodent models of experimental autoimmune uveitis. *Methods Mol Biol* (2012) 900:443–69. doi:10.1007/978-1-60761-720-4\_22
21. Read RW, Szalai AJ, Vogt SD, McGwin G, Barnum SR. Genetic deficiency of C3 as well as CNS-targeted expression of the complement inhibitor sCrly ameliorates experimental autoimmune uveoretinitis. *Exp Eye Res* (2006) 82:389–94. doi:10.1016/j.exer.2005.07.011
22. An F, Li Q, Tu Z, Bu H, Chan CC, Caspi RR, et al. Role of DAF in protecting against T-cell autoreactivity that leads to experimental autoimmune uveitis. *Invest Ophthalmol Vis Sci* (2009) 50:3778–82. doi:10.1167/iovs.08-3264
23. Zhang LJ, Bell BA, Yu MZ, Chan CC, Peachey NS, Fung J, et al. Complement anaphylatoxin receptors C3aR and C5aR are required in the pathogenesis of experimental autoimmune uveitis. *J Leukoc Biol* (2016) 99:447–54. doi:10.1189/jlb.3A0415-157R
24. Fischer MB, Prodeus AP, Nicholson-Weller A, Ma M, Murrow J, Reid RR, et al. Increased susceptibility to endotoxin shock in complement C3- and C4-deficient mice is corrected by C1 inhibitor replacement. *J Immunol* (1997) 159:976–82.
25. Paques M, Guyomard JL, Simonutti M, Roux MJ, Picaud S, Legargasson JF, et al. Panretinal, high-resolution color photography of the mouse fundus. *Invest Ophthalmol Vis Sci* (2007) 48:2769–74. doi:10.1167/iovs.06-1099
26. Bhatt S, Shen GQ, Li Y, Qian S, Ragni MV, Lu L. Hepatic stellate cell-conditioned myeloid cells provide a novel therapy for prevention of factor VIII antibody formation in mice. *Exp Hematol* (2015) 43:277–85. doi:10.1016/j.exphem.2014.12.001
27. Li Y, Kim BG, Qian S, Letterio JJ, Fung JJ, Lu L, et al. Hepatic stellate cells inhibit T cells through active TGF-beta1 from a cell surface-bound latent TGF-beta1/GARP complex. *J Immunol* (2015) 195:2648–56. doi:10.4049/jimmunol.1500139
28. Li K, Fazekasova H, Wang N, Sagoo P, Peng Q, Khamri W, et al. Expression of complement components, receptors and regulators by human dendritic cells. *Mol Immunol* (2011) 48:1121–7. doi:10.1016/j.molimm.2011.02.003
29. Pickering MC, Botto M, Taylor PR, Lachmann PJ, Walport MJ. Systemic lupus erythematosus, complement deficiency, and apoptosis. *Adv Immunol* (2000) 76:227–324. doi:10.1016/S0065-2776(01)76021-X
30. Barilla-LaBarca ML, Atkinson JP. Rheumatic syndromes associated with complement deficiency. *Curr Opin Rheumatol* (2003) 15:55–60. doi:10.1097/0002281-200301000-00010
31. Hou S, Qi J, Liao D, Fang J, Chen L, Kijlstra A, et al. High C4 gene copy numbers protects against Vogt-Koyanagi-Harada syndrome in Chinese Han. *Br J Ophthalmol* (2014) 98:1733–7. doi:10.1136/bjophthalmol-2014-305596
32. Prodeus AP, Goerg S, Shen LM, Pozdnyakova OO, Chu L, Alicot EM, et al. A critical role for complement in maintenance of self-tolerance. *Immunity* (1998) 9:721–31. doi:10.1016/S1074-7613(00)80669-X
33. Quigg RJ, Lim A, Haas M, Alexander JJ, He C, Carroll MC. Immune complex glomerulonephritis in C4- and C3-deficient mice. *Kidney Int* (1998) 53:320–30. doi:10.1046/j.1523-1755.1998.00723.x
34. Da Costa XJ, Brockman MA, Alicot E, Ma M, Fischer MB, Zhou X, et al. Humoral response to herpes simplex virus is complement-dependent. *Proc Natl Acad Sci U S A* (1999) 96:12708–12. doi:10.1073/pnas.96.22.12708
35. Montalvo V, Campos MM, Chan CC, Wawrousek EF, Bush RA, Lambris JD, et al. Complement deposits on ocular tissues adjacent to sites of inflammation. *Curr Eye Res* (2007) 32:917–22. doi:10.1080/02713680701656343
36. Copland DA, Hussain K, Baalasubramanian S, Hughes TR, Morgan BP, Xu H, et al. Systemic and local anti-C5 therapy reduces the disease severity in experimental autoimmune uveoretinitis. *Clin Exp Immunol* (2010) 159:303–14. doi:10.1111/j.1365-2249.2009.04070.x
37. Nataf S, Carroll SL, Wetsel RA, Szalai AJ, Barnum SR. Attenuation of experimental autoimmune demyelination in complement-deficient mice. *J Immunol* (2000) 165:5867–73. doi:10.4049/jimmunol.165.10.5867
38. Manickam B, Jha P, Matta B, Liu J, Bora PS, Bora NS. Inhibition of complement alternative pathway suppresses experimental autoimmune anterior uveitis by modulating T cell responses. *J Biol Chem* (2011) 286:8472–80. doi:10.1074/jbc.M110.197616
39. Yang Y, Chung EK, Wu YL, Savelli SL, Nagaraja HN, Zhou B, et al. Gene copy-number variation and associated polymorphisms of complement component C4 in human systemic lupus erythematosus (SLE): low copy number is a risk factor for and high copy number is a protective factor against SLE susceptibility in European Americans. *Am J Hum Genet* (2007) 80:1037–54. doi:10.1086/518257
40. Mok CC, Lau CS. Pathogenesis of systemic lupus erythematosus. *J Clin Pathol* (2003) 56:481–90. doi:10.1136/jcp.56.7.481
41. Fischer MB, Ma M, Goerg S, Zhou X, Xia J, Finco O, et al. Regulation of the B cell response to T-dependent antigens by classical pathway complement. *J Immunol* (1996) 157:549–56.
42. Christodoss P, Tuzun E, Li J, Saini SS, Yang H. Classical complement pathway in experimental autoimmune myasthenia gravis pathogenesis. *Ann N Y Acad Sci* (2008) 1132:210–9. doi:10.1196/annals.1405.009
43. Boos LA, Szalai AJ, Barnum SR. Murine complement C4 is not required for experimental autoimmune encephalomyelitis. *Glia* (2005) 49:158–60. doi:10.1002/glia.20093
44. Tsukamoto H, Nagasawa K, Ueda Y, Mayumi T, Yoshizawa S, Furugo I, et al. Effect of T cells on the complement production by monocytes. *Cell Immunol* (1993) 146:382–90.
45. Gadjeva M, Verschoor A, Brockman MA, Jezak H, Shen LM, Knipe DM, et al. Macrophage-derived complement component C4 can restore humoral immunity in C4-deficient mice. *J Immunol* (2002) 169:5489–95. doi:10.4049/jimmunol.169.10.5489
46. Zhou W, Patel H, Li K, Peng Q, Villiers MB, Sacks SH. Macrophages from C3-deficient mice have impaired potency to stimulate alloreactive T cells. *Blood* (2006) 107:2461–9. doi:10.1182/blood-2005-08-3144
47. Pantazis P, Kalyanaraman VS, Bing DH. Synthesis of the third component of complement (C3) by lectin-activated and HTLV-infected human T-cells. *Mol Immunol* (1990) 27:283–9. doi:10.1016/0161-5890(90)90141-L

**Conflict of Interest Statement:** The authors declare that the research was conducted in the absence of any commercial or financial relationships that could be construed as a potential conflict of interest.

Copyright © 2017 Zhang, Bell, Li, Caspi and Lin. This is an open-access article distributed under the terms of the Creative Commons Attribution License (CC BY). The use, distribution or reproduction in other forums is permitted, provided the original author(s) or licensor are credited and that the original publication in this journal is cited, in accordance with accepted academic practice. No use, distribution or reproduction is permitted which does not comply with these terms.