



# Intestinal CD103<sup>+</sup>CD11b<sup>+</sup> cDC2 Conventional Dendritic Cells Are Required for Primary CD4<sup>+</sup> T and B Cell Responses to Soluble Flagellin

Adriana Flores-Langarica<sup>1\*</sup>, Charlotte Cook<sup>2</sup>, Katarzyna Müller Luda<sup>3</sup>, Emma K. Persson<sup>4</sup>, Jennifer L. Marshall<sup>5</sup>, Nonantzin Beristain-Covarrubias<sup>1</sup>, Juan Carlos Yam-Puc<sup>1</sup>, Madelene Dahlgren<sup>3</sup>, Jenny J. Persson<sup>3</sup>, Satoshi Uematsu<sup>6,7</sup>, Shizuo Akira<sup>8</sup>, Ian R. Henderson<sup>2</sup>, Bengt Johansson Lindbom<sup>3,9</sup>, William Agace<sup>3,9</sup> and Adam F. Cunningham<sup>1</sup>

<sup>1</sup> Institute of Immunology and Immunotherapy, College of Medical and Dental Sciences, University of Birmingham, Birmingham, United Kingdom, <sup>2</sup> Institute of Microbiology and Infection, College of Medical and Dental Sciences, University of Birmingham, Birmingham, United Kingdom, <sup>3</sup> Immunology Section, Department of Experimental Medical Science, Lund University, Lund, Sweden, <sup>4</sup> VIB-Ugent Center for Inflammation Research, Ghent, Belgium, <sup>5</sup> Institute of Inflammation and Ageing, College of Medical and Dental Sciences, University of Birmingham, Birmingham, United Kingdom, <sup>6</sup> International Research and Development Centre for Mucosal Vaccine, Institute for Medical Science, The University of Tokyo, Tokyo, Japan, <sup>7</sup> Department of Immunology and Genomics, Osaka City University Graduate School of Medicine, Osaka, Japan, <sup>8</sup> World Premier International Immunology Frontier Research Centre, Osaka University, Suita, Japan, <sup>9</sup> Section of Biology and Chemistry, Department for Micro- and Nanotechnology, Technical University of Denmark, Kongens Lyngby, Denmark

## OPEN ACCESS

### Edited by:

Silvia Beatriz Boscardin,  
Universidade de São Paulo, Brazil

### Reviewed by:

Henning Lauterbach,  
Bavarian Nordic, Germany  
Kiwook Kim,  
Washington University School of  
Medicine in St. Louis, United States

### \*Correspondence:

Adriana Flores-Langarica  
a.floreslangarica@bham.ac.uk

### Specialty section:

This article was submitted to  
Antigen Presenting Cell Biology,  
a section of the journal  
Frontiers in Immunology

**Received:** 19 July 2018

**Accepted:** 28 September 2018

**Published:** 17 October 2018

### Citation:

Flores-Langarica A, Cook C, Müller Luda K, Persson EK, Marshall JL, Beristain-Covarrubias N, Yam-Puc JC, Dahlgren M, Persson JJ, Uematsu S, Akira S, Henderson IR, Lindbom BJ, Agace W and Cunningham AF (2018) Intestinal CD103<sup>+</sup>CD11b<sup>+</sup> cDC2 Conventional Dendritic Cells Are Required for Primary CD4<sup>+</sup> T and B Cell Responses to Soluble Flagellin. *Front. Immunol.* 9:2409. doi: 10.3389/fimmu.2018.02409

Systemic immunization with soluble flagellin (sFliC) from *Salmonella* Typhimurium induces mucosal responses, offering potential as an adjuvant platform for vaccines. Moreover, this engagement of mucosal immunity is necessary for optimal systemic immunity, demonstrating an interaction between these two semi-autonomous immune systems. Although TLR5 and CD103<sup>+</sup>CD11b<sup>+</sup> cDC2 contribute to this process, the relationship between these is unclear in the early activation of CD4<sup>+</sup> T cells and the development of antigen-specific B cell responses. In this work, we use TLR5-deficient mice and *CD11c-cre.Irf4<sup>fl/fl</sup>* mice (which have reduced numbers of cDC2, particularly intestinal CD103<sup>+</sup>CD11b<sup>+</sup> cDCs), to address these points by studying the responses concurrently in the spleen and the mesenteric lymph nodes (MLN). We show that CD103<sup>+</sup>CD11b<sup>+</sup> cDC2 respond rapidly and accumulate in the MLN after immunization with sFliC in a TLR5-dependent manner. Furthermore, we identify that whilst CD103<sup>+</sup>CD11b<sup>+</sup> cDC2 are essential for the induction of primary T and B cell responses in the mucosa, they do not play such a central role for the induction of these responses in the spleen. Additionally, we show the involvement of CD103<sup>+</sup>CD11b<sup>+</sup> cDC2 in the induction of Th2-associated responses. *CD11c-cre.Irf4<sup>fl/fl</sup>* mice showed a reduced primary FliC-specific Th2-associated IgG1 responses, but enhanced Th1-associated IgG2c responses. These data expand our current understanding of the mucosal immune responses promoted by sFliC and highlights the potential of this adjuvant for vaccine usage by taking advantage of the functionality of mucosal CD103<sup>+</sup>CD11b<sup>+</sup> cDC2.

**Keywords:** flagellin, mucosa, immune response, dendritic cells, cDC2

## INTRODUCTION

The systemic and mucosal immune systems are semi-autonomous and engaging systemic immunity does not necessarily induce immunity in mucosal sites. Engaging the two immune systems concurrently could potentially enhance the benefits of vaccination, as most vaccines are administered through subcutaneous (s.c.) or intra-muscular injection. One antigen that can induce both mucosal and systemic immunity concurrently after intraperitoneal (i.p.) or s.c. immunization is purified, soluble flagellin (sFliC) from *Salmonella* Typhimurium (1–3). This 51 kDa bacterial motility protein is the only known ligand for TLR5 (4). Moreover, flagellin is an immunodominant antigen that can induce robust innate and adaptive immune responses, which can also be protective (5–7). These properties, alongside its potential as an adjuvant, mean flagellin is the focus of multiple vaccine strategies in livestock and in humans (8–12). The antigenic environment in which flagellin is encountered influences the type of immune response induced to this protein. When surface-localized on the bacterium, the antigen-specific response is Th1-reflecting, whereas to purified flagellin the response is significantly more Th2-like, including the induction of FliC-specific IgG1 (13, 14).

Conventional dendritic cells (cDC) are key initiators and modulators of adaptive immune responses and as such targeting cDC directly is an approach to enhance responses to vaccines (15, 16). cDCs can be classified into two major subsets; cDC1 that require the transcription factors IRF8, BATF3, and ID2, and cDC2 that development is independent of these transcription factors, importantly some them require the transcription factor IRF4 for their survival and function. This classification is particularly important since it allows the identification of cDCs equivalents across tissues and even across species (17, 18). In the intestinal mucosa several sub populations of cDC can be found, CD103<sup>+</sup>CD11b<sup>-</sup>, CD103<sup>+</sup>CD11b<sup>+</sup>, and CD103<sup>-</sup>CD11b<sup>+</sup> cDC. The first corresponds to cDC1 and the latter two to cDC2. Each of these subsets plays key, non-redundant roles in controlling immune homeostasis in the intestinal mucosa (19–21).

*In vivo* studies have shown that by 24 h after i.p. or s.c. immunization with sFliC, T cell priming is established in multiple sites concurrently, including the mesenteric lymph node (MLN), spleen and peripheral lymph nodes (1). Analysis of cDCs shows that exclusively in the MLN, there is a rapid TLR5-dependent accumulation of CD103<sup>+</sup> cDC post sFliC-immunization (1). Moreover, using *Cd11c-cre.Irf4<sup>fl/fl</sup>* mice, which have diminished numbers of CD103<sup>+</sup>CD11b<sup>+</sup> cDCs in the small intestine lamina propria and a 90% reduction of this population in the MLN, we showed that this subset was essential for the induction of adaptive immune responses in the MLN, while splenic cDC2 play only a partial role. For clarity, CD103<sup>+</sup>CD11b<sup>+</sup> cDCs will be referred to throughout as CD103<sup>+</sup>cDC2 (3). This indicates that i.p., immunization with sFliC can bridge both systemic and mucosal

immune systems through the targeting of a single mucosal cDC subset.

Our previous work examining the role of CD103<sup>+</sup>cDC2 in regulating the response to sFliC focused on the long-term antibody response *in vivo* using the *Cd11c-cre.Irf4<sup>fl/fl</sup>* mice. This necessitated the use of a prime-boost system and did not focus on the primary T and B cell responses. Whilst all elements of the response were lost in the MLN when mucosal CD103<sup>+</sup>cDC2 were reduced, some features of the anti-FliC response were retained in the spleen. This could be because some T and B cell responses were generated in the MLN shortly after immunization, which could lead to the generation of memory T and B cell responses that contribute to the responses observed after secondary immunization. Alternatively, it could be that cDC2 and cDC1 contributed differentially to the anti-sFliC response in the MLN and spleen. Therefore, we examine here the development of the anti-sFliC response in the first days after immunization to characterize the relationship between cDC2 and TLR5 and the early induction of IgG switching.

## MATERIAL AND METHODS

### Mice

*Cd11c-cre.Irf4<sup>fl/fl</sup>* (19) and NAIP5<sup>-/-</sup> mice were maintained at the Biomedical Center at Lund University. Specific pathogen-free 8 week C57BL/6 mice were purchased from Harlan Sprague-Dawley. TLR5<sup>-/-</sup> mice were maintained in-house at the Biomedical Service Unit at the University of Birmingham. Littermates or age matched mice were used for all experiments. All animal procedures were carried out in strict accordance with the Lund/Malmö Animal Ethics Committee, the University of Birmingham Ethics Committee and were covered under the UK Home Office Project license 30/2850.

### Antigen Preparation and Immunization

sFliC was generated as described (22), a his-tagged recombinant protein and purified by nickel affinity chromatography and immunoprecipitation with a FliC-specific monoclonal. Mice were immunized i.p. with 20 µg recombinant sFliC for 24 h or 7 days as indicated.

### Cell Isolation and Flow Cytometry

Single cell suspensions from spleens and MLNs were generated by mechanical disruption. When evaluating cDCs, enzymatic digestion was performed using collagenase VIII digestion (400 U/ml; 25 min; 37°C). Cells were processed for flow cytometry using previously described procedures (1). Data acquisition was performed on a LSRII (BD Bioscience) or a CyAn ADP (Beckman Coulter) and analyzed using FlowJo software 9.8.2. (Tree Star). The following FITC-conjugated antibodies were used, CD3 (145-2C11), B220 (RA3-6B2), and NK1.1 (PK136; all from eBioscience). The following PE-conjugated antibodies were used; CD103 (M290) and CD62L (MEL-14; both from eBioscience). CD11c (N418), CD44 (IM7), and CD95 (MFL3; all from eBioscience) were PE-Cy7-conjugated. CD11b (M1/70), CD4 (RM4-5, both BD Biosciences), TCRβ (H57-597, Biolegend), GL7 (eBioscience) were PB-conjugated. MHC-II (M5/114.15.2) and

**Abbreviations:** Ab, antibody; cDCs, conventional dendritic cells; GC, germinal center; i. p., intraperitoneal; MLN, mesenteric lymph node; s.c., subcutaneous; sFliC, soluble flagellin.

Streptavidin (eBioscience) APC-conjugated were used. B220 (RA3-6B2), CD11b (MI-70), CD11c (N418) and NK1.1 (PK136; all from eBioscience) were Alexa700-conjugated. TCR $\beta$  (H57-597, Biolegend) was APC Cy7-conjugated. CD8 $\alpha$  (5H10) from Invitrogen was used PO-conjugated.

cDCs were gated as Lin<sup>-</sup>[CD3,B220,NK1.1,GR1]CD11c<sup>+</sup>MHC<sup>hi</sup> cells, splenic cDC1 were defined as CD8 $\alpha$ <sup>+</sup> and cDC2 as CD11b<sup>+</sup>CD4<sup>+</sup> cells, mucosal cDC1 were defined as CD103<sup>+</sup>CD11b<sup>-</sup> and cDC2 as CD103<sup>+</sup>CD11b<sup>+</sup> cells. Activated CD4<sup>+</sup> T cells were gated as CD3<sup>+</sup>CD4<sup>+</sup>CD44<sup>+</sup>CD62L<sup>-</sup>. Germinal center (GC) B cells were defined as TCR $\beta$ <sup>-</sup>CD19<sup>+</sup>GL7<sup>+</sup>CD95<sup>+</sup> cells.

## Immunohistochemistry and Confocal Microscopy

Immunohistochemistry was performed as described previously (13). Cryosections (6 $\mu$ m) were incubated with primary unlabelled Abs for 45 min at RT before addition of either HRP-conjugated or biotin-conjugated secondary antibodies. FliC-binding cells were identified as described (1) using soluble biotinylated FliC. Subsequently streptavidin ABC complex alkaline phosphatase (Dako) was used. Signal was detected using diaminobenzidine for HRP activity and naphthol AS-MX phosphate with Fast Blue salt and levamisole for alkaline phosphatase activity. Images were acquired using a Leica microscope DM6000 using 10x and 20x objectives. Quantification of sFliC<sup>+</sup>IgG1<sup>+</sup> and sFliC<sup>+</sup>IgG2c<sup>+</sup> was performed in two independent experiments, each with 4 mice per group. A total of 10 random fields were evaluated per slide.

Immunofluorescence was performed on frozen sections. Staining was performed in PBS containing 10% FCS, 0.1% sodium azide and sections were mounted in 2.5% 1,4-Diazabicyclo(2,2,2)octane (pH 8.6) in 90% glycerol in PBS. After incubation with primary Abs (1 h, room temperature), secondary Abs were added (30 min; room temperature). Images were acquired using the Fluorescence Zeiss Axio Scan.Z1, image analysis was performed with Zen, 2012 blue edition.

The following Abs were used for immunofluorescence: CD11c, Dec205, CD103. DCIR2 was used biotinylated. CD11b (eBioscience) and streptavidin (Jackson ImmunoResearch) were used A488 conjugated. And AMCA-conjugated anti-IgM (Jackson ImmunoResearch) was used. The following Abs were used for immunohistochemistry: IgD, IgG1, and IgG2c. sFliC and PNA (Vector) biotinylated were used.

## In vitro Restimulation for the Detection of Antigen-Specific CD4<sup>+</sup> T Cells

Antigen-specific CD4<sup>+</sup> T cells were detected by their expression of CD154 post-restimulation as previously described (23). In brief, 6  $\times$  10<sup>6</sup> cells (from spleen or MLN) were cultured in the presence of sFliC (5  $\mu$ g/ml), anti-CD40 (1C10 2  $\mu$ g/ml), biotinylated anti-CD154 (MR1 5  $\mu$ g/ml) and anti-Fc $\gamma$  receptor (2.4G2 50  $\mu$ g/ml) for 48 h. Control wells included cells cultured without antigen. The expression of CD154 was evaluated by

staining the cells with Streptavidin-APC and gating was done on Lin<sup>-</sup>(CD19/CD11b/NK1.1/CD11c)TCR $\beta$ <sup>+</sup>CD4<sup>+</sup>CD62L<sup>-</sup>.

## Sflic-Specific ELISA

ELISA plates were coated with 5  $\mu$ g/ml of sFliC (24 h at 4°C) and blocked with 1% BSA overnight at 4°C. Serum was diluted 1:100 in PBS–0.05% Tween, and was further diluted stepwise. Plates were incubated for 1 h at 37°C. Bound antibodies were detected using alkaline phosphatase conjugated, goat anti-mouse IgG, IgG1, and IgG2c Abs (Southern Biotech). Alkaline phosphatase activity was detected using Sigma-Fast p-nitrophenylphosphate (Sigma Aldrich). Relative reciprocal titers were calculated by measuring the dilution at which the serum reached a defined OD<sub>405</sub>.

## Statistics

For statistics we used the non-parametric Mann-Whitney sum of ranks test or two-way ANOVA as appropriate using the GraphPad Prism software (GraphPad).

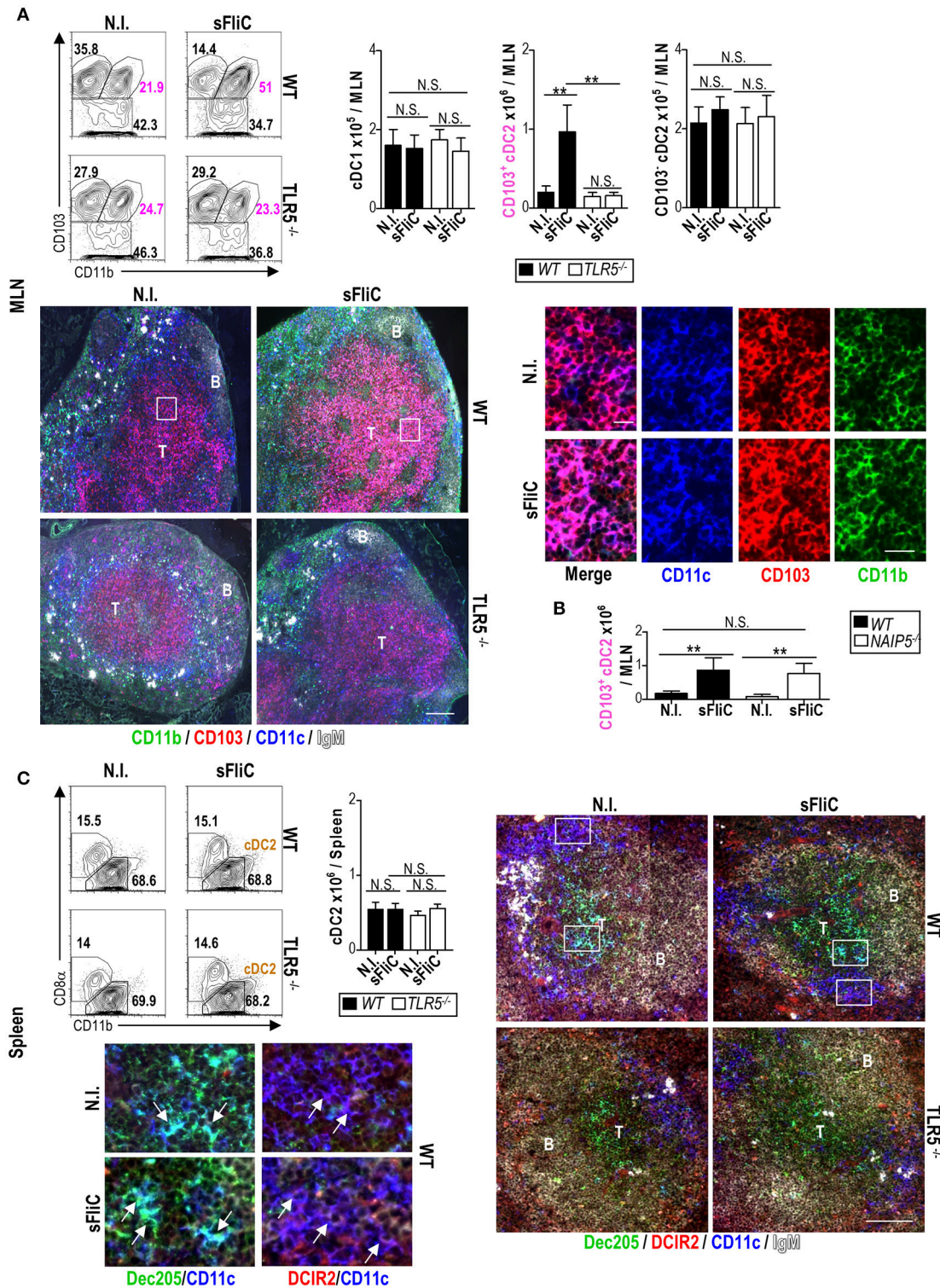
## RESULTS

### The Accumulation of CD103<sup>+</sup>cDC2 in the MLN After sFliC Immunization Is TLR5-Dependent

Intraperitoneal immunization of sFliC induces a rapid MyD88-dependent accumulation of intestinal-derived CD103<sup>+</sup>cDC2 in the MLN (1, 3). To analyse the role of TLR5 in this response, WT and TLR5<sup>-/-</sup> mice were immunized with sFliC and the cDC response analyzed by flow cytometry and *in situ* by immunofluorescence 24 h post-immunization. In the MLN of WT mice, immunization with sFliC resulted in an increase in the frequency and absolute numbers of CD103<sup>+</sup>cDC2, which was abrogated in TLR5<sup>-/-</sup> mice, no significant change in absolute numbers or frequency was observed for cDC1 or CD103<sup>-</sup>cDC2 (**Figure 1A**). Immunofluorescence microscopy showed that CD103<sup>+</sup>cDC2 were mainly located in the T zone, before and after immunization, although they were less abundant in the absence of immunization. The high zoom-insets confirmed that CD103<sup>+</sup>cDC2 in the T zone express CD11c, CD103, and CD11b. TLR5 is the extracellular receptor for sFliC, however there is an intracellular pathway for flagellin detection controlled by NAIP5 (24). To evaluate the contribution of this alternative pathway we evaluated the CD103<sup>+</sup>cDC2 in NAIP5<sup>-/-</sup> mice, we observed a similar accumulation of those cells in comparison with the WT after sFliC immunization, strongly suggesting that TLR5 exclusively controls the response to sFliC by CD103<sup>+</sup>cDC2 in the MLN (**Figure 1B**).

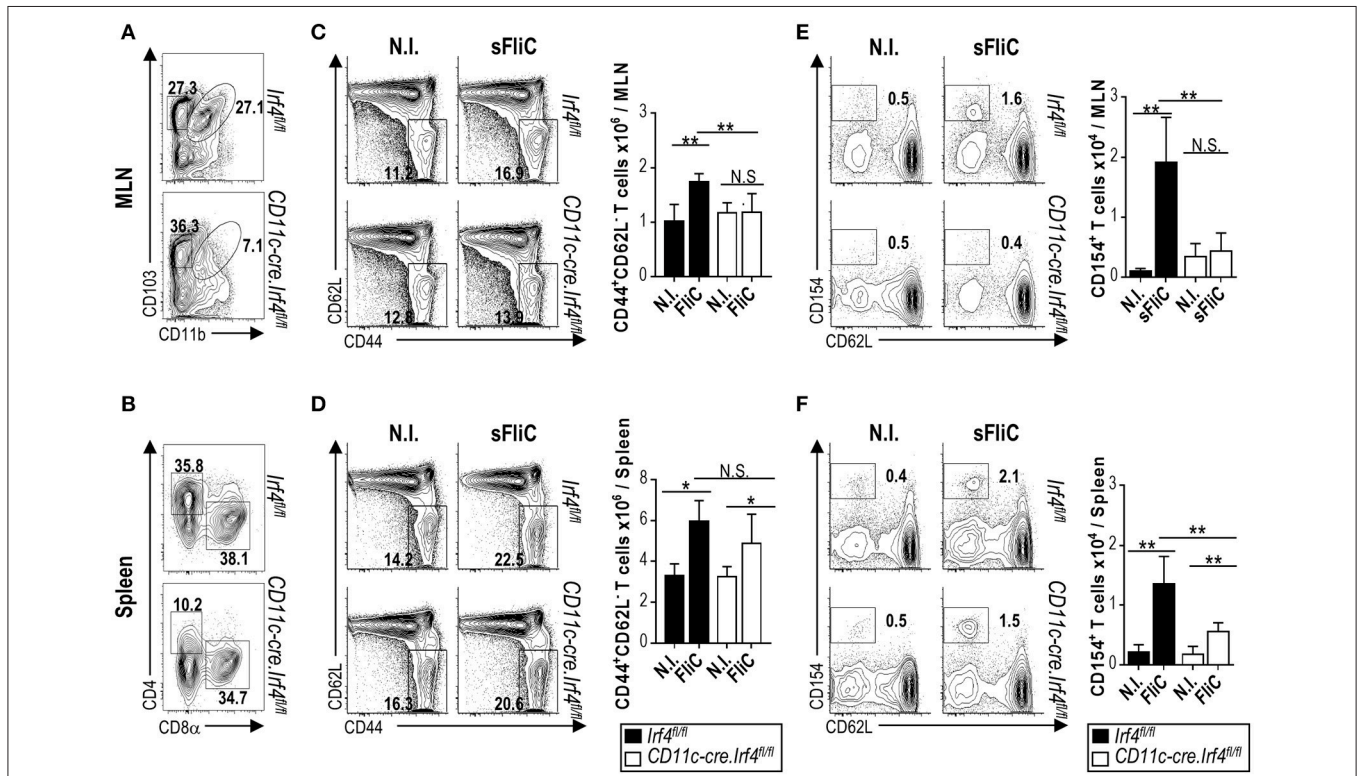
In contrast to the MLN, in the spleen there was no change in the frequency and absolute numbers of cDC2 (identified as CD11b<sup>+</sup> cDC) of WT mice after immunization with sFliC (**Figure 1C**). Furthermore, no difference was observed in the location of cDC2 (DCIR2<sup>+</sup>) which remain primarily localized in the bridging channels between the red and white pulps (25). Loss of TLR5 did not alter the numbers of cDC2 before or after immunization, nor the distribution of these cells within the spleen (**Figure 1B**). Therefore, immunization with sFliC results





**FIGURE 1 |** Mucosal CD103<sup>+</sup>cDC2s respond to sFluC immunization in a TLR5-dependent manner. Wild-type (WT) or TLR5<sup>-/-</sup> mice were immunized i.p. with sFluC and cDCs (Lin<sup>-</sup>MHC-II<sup>hi</sup>CD11c<sup>hi</sup>) were evaluated 24 h later, alongside non-immunized (N.I.) mice. **(A)** MLN representative flow cytometry plots (including percentages) of cDC1 (Lin<sup>-</sup>MHC-II<sup>hi</sup>CD11c<sup>hi</sup>CD11b<sup>-</sup>CD103<sup>+</sup>), CD103<sup>+</sup>cDC2s (Lin<sup>-</sup>MHC-II<sup>hi</sup>CD11c<sup>hi</sup>CD11b<sup>+</sup>CD103<sup>+</sup>) and CD103<sup>+</sup>cDC2 (Lin<sup>-</sup>MHC-II<sup>hi</sup>CD11c<sup>hi</sup>CD103<sup>-</sup>) are shown with adjacent graphs of absolute numbers. Representative photomicrographs of MLN sections stained for CD11c; blue, CD103; red, CD11b; green, and IgM; white (scale bar = 200  $\mu$ m) are shown (top right). Zoom-in insets (white boxes) show single staining and a merge of CD11c, CD103, and CD11b (scale bar = 20  $\mu$ m). **(Continued)**

**FIGURE 1 |** T, T zone; B, B zone. **(B)** WT or *NAIP5*<sup>-/-</sup> mice were immunized i.p., with sFliC and absolute numbers of MLN CD103<sup>+</sup>cDC2s were evaluated 24 h later, alongside non-immunized (N.I.) mice. **(C)** Wild-type (WT) or *TLR5*<sup>-/-</sup> mice were immunized i.p. with sFliC and splenic cDCs (*Lin*<sup>-</sup>MHC-II<sup>hi</sup>CD11c<sup>hi</sup>) were evaluated 24 h later, alongside non-immunized (N.I.) mice. Representative flow cytometry plots (including percentages) of cDC2s (*Lin*<sup>-</sup>MHC-II<sup>hi</sup>CD11c<sup>hi</sup>CD11b<sup>+</sup>) are shown with adjacent graphs of absolute numbers. Representative photomicrographs of spleen sections stained for CD11c; blue, Dec205; green, DCIR2; red, and IgM; white (scale bar = 100  $\mu$ m). Zoom-in insets (white boxes) show the differential location of cDC1s (Dec205<sup>+</sup>) in the T zone and cDC2s (DCIR2<sup>+</sup>) in the bridging channels. Data shown as mean+s.d. of 4 mice and are representative of 3 independent experiments. \*\**P* < 0.001, by two-way analysis of variance (ANOVA) N.S., not significant.



**FIGURE 2 |** The primary T cell response to sFliC is dependent upon CD103<sup>+</sup>cDC2 in the mucosa but not in the spleen. cDC populations in *Irf4*<sup>fl/fl</sup> or *Cd11c-cre.Irf4*<sup>fl/fl</sup> mice were evaluated in **(A)** MLN and **(B)** spleen. *Irf4*<sup>fl/fl</sup> or *Cd11c-cre.Irf4*<sup>fl/fl</sup> mice were either non-immunized (N.I.) or immunized with sFliC and T cell responses were evaluated 7 days later. Representative flow cytometry plots (percentages) and absolute numbers (graphs) of activated CD4<sup>+</sup> T cells (CD3<sup>+</sup>CD4<sup>+</sup>CD44<sup>+</sup>CD62L<sup>-</sup>) in the **(C)** MLN and **(D)** spleen. *Ex vivo* sFliC-specific restimulations, single cell suspensions were restimulated with 5  $\mu$ g/ml of sFliC in the presence of anti-CD40 (2  $\mu$ g/ml), biotinylated anti-CD154 (5  $\mu$ g/ml) for 48 h. Antigen-specific CD4<sup>+</sup> T cells were identified by detection of the anti-CD154 by streptavidin. **(E)** MLN and **(F)** spleen representative flow cytometry plots (percentages) and absolute numbers (graphs) of CD154<sup>+</sup> CD4<sup>+</sup> T cells. Data shown as mean + s.d. (*n* = 4 mice/group) representative experiment of 3 performed. \*\**P* < 0.001; \**P* < 0.05, by two-way analysis of variance (ANOVA) N.S., not significant.

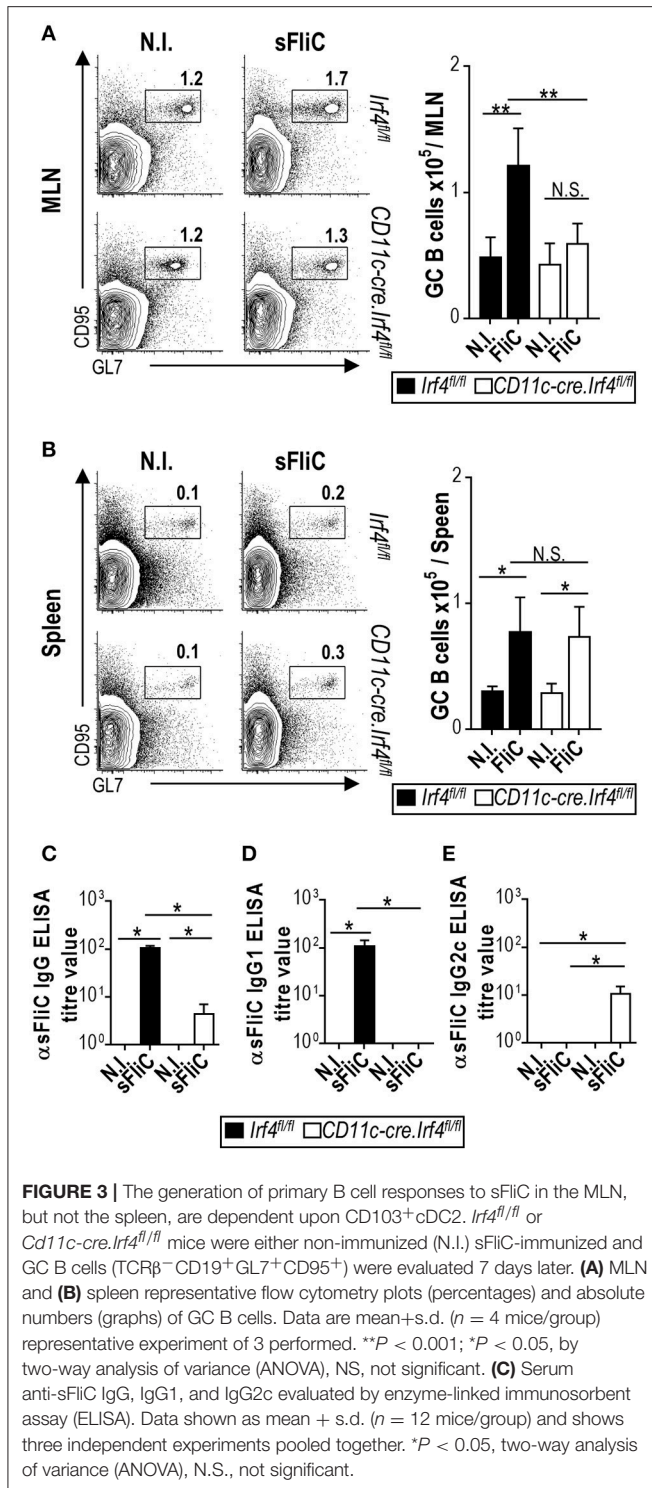
in the selective accumulation of CD103<sup>+</sup>cDC2 in the MLN, but not in the spleen in a TLR5 dependent manner.

## CD103<sup>+</sup>cDC2 Are Essential for T Cell Priming in the MLN After Immunization With sFliC

To assess the contribution of cDC2 to T cell priming after immunization with sFliC, we assessed responses in *Cd11c-cre.Irf4*<sup>fl/fl</sup> mice. These mice lack IRF4 in cells that express CD11c, resulting in a 50% reduction of CD103<sup>+</sup>CD11b<sup>+</sup> cDCs in the small intestine lamina propria and a 90% reduction in the MLN (19). **Figure 2A** shows the significant reduction of MLN CD103<sup>+</sup>CD11b<sup>+</sup> cDCs in *Cd11c-cre.Irf4*<sup>fl/fl</sup> mice in comparison with the *Irf4*<sup>fl/fl</sup> mice. Furthermore, we also show the expected

reduction of splenic cDC2 in these mice (**Figure 2B**). The frequency and number of activated CD4<sup>+</sup> T cells in the MLN of *Cd11c-cre.Irf4*<sup>fl/fl</sup> mice 7 days after FliC immunization, was lower compared to *Irf4*<sup>fl/fl</sup> mice and similar to non-immunized mice (**Figure 2C**). In contrast, absolute numbers of activated CD4<sup>+</sup> T cells in the spleen were similar between *Cd11c-cre.Irf4*<sup>fl/fl</sup> and *Irf4*<sup>fl/fl</sup> mice (**Figure 2D**). To examine the endogenous antigen-specific T cell response we performed an *in vitro* re-stimulation assay that uses the transient expression of CD154 to identify antigen-specific CD4<sup>+</sup> T cells (23). In the MLN from immunized *Cd11c-cre.Irf4*<sup>fl/fl</sup> mice, the frequency and number of CD154<sup>+</sup> sFliC-specific CD4<sup>+</sup> T cells was significantly lower than those in immunized *Irf4*<sup>fl/fl</sup> mice and similar to levels observed in from non-immunized mice (**Figure 2E**). In contrast, in the spleen an increase of CD154<sup>+</sup> sFliC-specific CD4<sup>+</sup> T cells was observed





**FIGURE 3 |** The generation of primary B cell responses to sFliC in the MLN, but not the spleen, are dependent upon CD103<sup>+</sup>cDC2. *Irf4<sup>fl/fl</sup>* or *Cd11c-cre.Irf4<sup>fl/fl</sup>* mice were either non-immunized (N.I.) sFliC-immunized and GC B cells (TCRβ<sup>+</sup>CD19<sup>+</sup>GL7<sup>+</sup>CD95<sup>+</sup>) were evaluated 7 days later. **(A)** MLN and **(B)** spleen representative flow cytometry plots (percentages) and absolute numbers (graphs) of GC B cells. Data are mean±s.d. ( $n = 4$  mice/group) representative experiment of 3 performed. \*\* $P < 0.001$ ; \* $P < 0.05$ , by two-way analysis of variance (ANOVA), NS, not significant. **(C)** Serum anti-sFliC IgG, IgG1, and IgG2c evaluated by enzyme-linked immunosorbent assay (ELISA). Data shown as mean + s.d. ( $n = 12$  mice/group) and shows three independent experiments pooled together. \* $P < 0.05$ , two-way analysis of variance (ANOVA), N.S., not significant.

in the *Cd11c-cre.Irf4<sup>fl/fl</sup>* mice compared to the non-immunized mice but it was significantly lower compared to *Irf4<sup>fl/fl</sup>* mice (Figure 2F). Collectively, these results demonstrate that the early T cell response induced to sFliC is dependent on mucosal CD103<sup>+</sup>cDC2s, however in the spleen IRF4 expression by cDCs only impacts partially on T cell priming.

## cDC2 Influence the Extent and Direction of IgG Switching

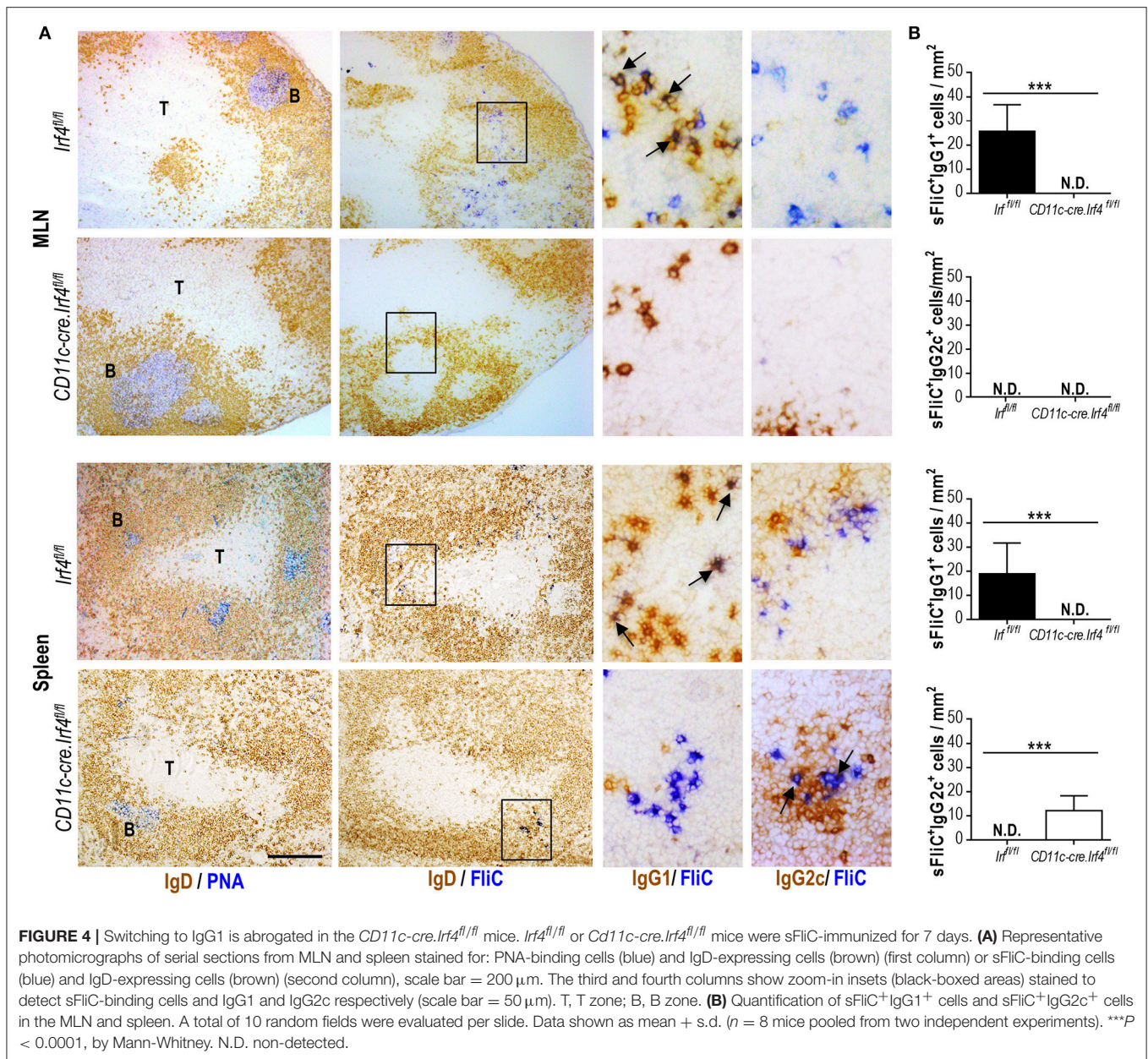
In order to address how the B cell response to sFliC is affected in the *Cd11c-cre.Irf4<sup>fl/fl</sup>* mice we analyzed GC B cells by flow cytometry 7-days post-immunization. In the MLN, *Cd11c-cre.Irf4<sup>fl/fl</sup>* mice showed no increase in the number of GC B cells in comparison to non-immunized and *Irf4<sup>fl/fl</sup>* sFliC-immunized mice (Figure 3A). In contrast, in the spleen, immunized *Cd11c-cre.Irf4<sup>fl/fl</sup>* and *Irf4<sup>fl/fl</sup>* mice displayed a similar increase in GC B cell numbers (Figure 3B). To analyse the FliC-specific Ab response in more detail, serum Ab titres were evaluated by ELISA. Total sFliC-specific IgG titres were reduced in *Cd11c-cre.Irf4<sup>fl/fl</sup>* mice in comparison with *Irf4<sup>fl/fl</sup>* mice (Figure 3C). In mice, sFliC induces some Th2-associated features including antigen-specific IgG1 (13, 14). FliC-specific IgG1 was detected in sFliC-immunized *Irf4<sup>fl/fl</sup>* mice, but was absent in *Cd11c-cre.Irf4<sup>fl/fl</sup>* mice (Figure 3D). This was unexpected since some sFliC-specific IgG was detected in *Cd11c-cre.Irf4<sup>fl/fl</sup>* mice and so titres of Th1-associated IgG2c were assessed. This isotype was detected exclusively in sFliC-immunized *Cd11c-cre.Irf4<sup>fl/fl</sup>* mice (Figure 3E), suggesting that cDC2 contribute to IgG1 switching.

We hypothesized that the serum IgG2c derived from spleen. To analyze this possibility *in situ*, we performed immunohistochemistry on serial sections from the MLN and spleen of sFliC-immunized *Irf4<sup>fl/fl</sup>* and *Cd11c-cre.Irf4<sup>fl/fl</sup>* mice. GCs were identified as follicular areas that bind PNA and sFliC-specific cells were identified by using biotinylated sFliC in conjunction with either anti-IgG1 or anti-IgG2c Abs. In the MLN, sFliC-specific cells were exclusively observed in *Irf4<sup>fl/fl</sup>* mice and were IgG1<sup>+</sup> (Figure 4A). In contrast, sFliC-binding cells were found in the spleens of both *Irf4<sup>fl/fl</sup>* and *Cd11c-cre.Irf4<sup>fl/fl</sup>* mice whilst in the *Irf4<sup>fl/fl</sup>* mice, the sFliC-specific cells were IgG1<sup>+</sup> and IgG2c<sup>-</sup>. In contrast, in *Cd11c-cre.Irf4<sup>fl/fl</sup>* mice the sFliC-specific cells were exclusively IgG2c<sup>+</sup> (Figure 4B). Collectively, these results show that cDC2s play a role in the polarization of the Ab response *in vivo*.

## DISCUSSION

We have previously shown that sFliC can drive a long-term mucosal adaptive response after i.p. immunization (1, 3). Furthermore, we also have shown that s.c. and i.p. immunization both induce similar cDC and IgA responses in the MLN, suggesting that our observations are not dependent of the route of immunization, but due to the intrinsic properties of sFliC. When addressing the prime-boost immune response in *Cd11c-cre.Irf4<sup>fl/fl</sup>* mice the immune response to sFliC in the spleen was reduced, but not abrogated, suggesting the possibility that memory cells could contribute to the response. To address this possibility we studied the primary immune response to sFliC and show that the primary T and B cell responses to sFliC in the MLN are completely dependent on CD103<sup>+</sup>cDC2, while that in the spleen is only partially dependent on cDC2.

Mucosal CD103<sup>+</sup>cDC2s are probably more efficient at driving responses after sFliC immunization because of their high



expression levels of TLR5 in comparison to splenic cDCs (26, 27). TLR5 can play an additional role in enhancing antigen capture and presentation through MHC-II and this is not MyD88-dependent (28). Moreover, ligation of TLR5 itself will lead to an upregulation of co-stimulatory molecules and cytokine expression, in a MyD88-dependent manner (4, 14). This is likely to be the mechanism that mediates the accumulation of CD103<sup>+</sup>cDC2 into the MLN after immunization with sFliC (1, 3). Furthermore, splenic cDCs are able to respond rapidly after sFliC immunization, possibly through activation by a bystander effect (22, 29). Therefore, in the spleen there may be less of a selective advantage for one subset to capture sFliC over another, meaning that both cDC1 and cDC2 are potentially able to present

antigen to CD4<sup>+</sup> T cells and initiate priming. In support of this idea *ex vivo* data using sorted, *in vivo* loaded, cDCs showed that both splenic cDC1 and cDC2 are able to mediate to T cell priming. Additionally, when flagellin is used as an adjuvant in studies using DEC205 and 33D1 to target splenic cDC1 and cDC2 cells, it shows that the presence of flagellin enhances the capacity of both cDC subsets to mediate T cell proliferation (30). This demonstrates that flagellin can promote responses in both cDC subsets, which indirectly supports our findings. In contrast to this, in the intestinal mucosa only CD103<sup>+</sup>cDC2 mediate T cell priming (3). Therefore, despite having a similar ontogeny, mucosal CD103<sup>+</sup>cDC2 and splenic cDC2 show differences in their capacity to capture sFliC and this difference may account for



why cDC2 play such a dominant role in driving T cell responses to FliC in the MLN but not the spleen.

After primary immunization of WT mice with sFliC, there is a robust GC response in the spleen, but a limited extrafollicular plasma cell response (13, 22). The predominant antigen-specific IgG isotype detected after immunization with sFliC in the serum is IgG1, associated to a Th2-like response (13, 14). Importantly, in the *Cd11c-cre.Irf4<sup>fl/fl</sup>* mice there was no significant increase in numbers of GC B cells in the MLN. In contrast, in the spleen, there was a normal GC response, which suggested that a B cell response developed in the spleen but not in the MLN when CD103<sup>+</sup>cDC2 were reduced. Nevertheless, there were lower serum total IgG titers in the *CD11-cre.Irf4<sup>fl/fl</sup>* mice and an abrogated IgG response in the BM (3). One interpretation of this is that in the primary response to sFliC, the antibody response generated in the MLN is a significant, if not predominant, contributor, to the serum total FliC-specific IgG pool.

A more detailed analysis of the IgG response showed that there was a difference in the predominant IgG isotype induced between immunized *Cd11c-cre.Irf4<sup>fl/fl</sup>* and *Irf4<sup>fl/fl</sup>* mice. Inducing the appropriate IgG isotype is important as the distinct IgG isotypes can influence the level of protection afforded by vaccination (31) or against different pathogens (32). Surprisingly, the residual FliC-specific IgG response observed in *Cd11c-cre.Irf4<sup>fl/fl</sup>* mice was not of the IgG1 isotype, but instead was of the IgG2c isotype. Immunohistochemistry showed that the FliC-specific IgG2c was being produced locally in the spleen by cells proximal to GC (Figure 3). This suggests that although a B cell response is maintained in the spleens of the *Cd11c-cre.Irf4<sup>fl/fl</sup>* mice, this B cell response is substantially different qualitatively. Further work is needed to identify what B cell associated factors, such as BAFF or APRIL, cDC1 and cDC2 produce that may contribute to this and whether these differ between cDCs from different anatomical sites. In mice, there is a partial association between

the direction of the T helper response and IgG isotype switching and so these findings may suggest that cDC2 contribute to Th2-associated responses. An association between cDC2 and Th2 polarization has been described previously in the context of infection or in atopic asthma models (21, 33–35). Moreover, we are working toward developing strategies to conjugate sFliC to different antigens and evaluate if these features that sFliC is able to promote as an adjuvant can be transferred to clinically relevant antigens. Our data helps inform on the relative merits of targeting specific DC populations in vaccination strategies.

## AUTHOR CONTRIBUTIONS

Conceptualization: AF-L, AC, and WA. Methodology: AF-L, CC, NB-C, JY-P, IH, MD, and BL. Investigation: AF-L, KM, EP, JM, NB-C, and JY-P. Resources: JP, SU, and SA. Writing—original draft: AF-L. Writing, review, and editing: AF-L, AC, and WA. Funding acquisition: AF-L, AC, and WA.

## FUNDING

This work was supported by grants from the BBSRC UK (BB/L009986/1) to AC, U21 staff fellowship program and Wellcome Trust ISSF Mobility grant to AF-L, and grants from the Danish Council for Independent Research (Sapere Aude III) and the Swedish Medical Research Council to WA.

## ACKNOWLEDGMENTS

The authors would like to thank Dr. K. Kotarsky and A. Selberg for animal typing and husbandry (Lund University) and Ian Ricketts at the Biomedical Service Unit at the University of Birmingham.

## REFERENCES

- Flores-Langarica A, Marshall JL, Hitchcock J, Cook C, Jobanputra J, Bobat S, et al. Systemic flagellin immunization stimulates mucosal CD103<sup>+</sup> dendritic cells and drives Foxp3<sup>+</sup> regulatory T cell and IgA responses in the mesenteric lymph node. *J Immunol.* (2012) 189:5745–54. doi: 10.4049/jimmunol.1202283
- Lopez-Yglesias AH, Zhao X, Quarles EK, Lai MA, VandenBos T, Strong RK, et al. Flagellin induces antibody responses through a TLR5- and inflammasome-independent pathway. *J Immunol.* (2014) 192:1587–96. doi: 10.4049/jimmunol.1301893
- Flores-Langarica A, Muller Luda K, Persson EK, Cook CN, Bobat S, Marshall JL, et al. CD103(+)CD11b(+) mucosal classical dendritic cells initiate long-term switched antibody responses to flagellin. *Mucosal Immunol.* (2018) 11:681–92. doi: 10.1038/mi.2017.105
- Hayashi F, Smith KD, Ozinsky A, Hawn TR, Yi EC, Goodlett DR, et al. The innate immune response to bacterial flagellin is mediated by Toll-like receptor 5. *Nature* (2001). 410:1099–103. doi: 10.1038/35074106
- McSorley SJ, Ehst BD, Yu Y, Gewirtz AT. Bacterial flagellin is an effective adjuvant for CD4<sup>+</sup> T cells *in vivo*. *J Immunol.* (2002) 169:3914–9. doi: 10.4049/jimmunol.169.7.3914
- Bobat S, Flores-Langarica A, Hitchcock J, Marshall JL, Kingsley RA, Goodall M, et al. Soluble flagellin, FliC, induces an Ag-specific Th2 response, yet promotes T-bet-regulated Th1 clearance of *Salmonella typhimurium* infection. *Eur J Immunol.* (2011) 41:1606–18. doi: 10.1002/eji.201041089
- Vijayan A, Rumbo M, Carnoy C, Sirard JC. Compartmentalized antimicrobial defenses in response to flagellin. *Trends Microbiol.* (2018) 26:423–35. doi: 10.1016/j.tim.2017.10.008
- McNeilly TN, Naylor SW, Mahajan A, Mitchell MC, McAteer S, Deane D, et al. *Escherichia coli* O157:H7 colonization in cattle following systemic and mucosal immunization with purified H7 flagellin. *Infect Immun.* (2008) 76:2594–602. doi: 10.1128/IAI.01452-07
- Liu G, Tarbet B, Song L, Reiserova L, Weaver B, Chen Y, et al. Immunogenicity and efficacy of flagellin-fused vaccine candidates targeting 2009 pandemic H1N1 influenza in mice. *PLoS ONE* (2011) 6:e20928. doi: 10.1371/journal.pone.0020928
- Taylor DN, Treanor JJ, Strout C, Johnson C, Fitzgerald T, Kavita U, et al. Induction of a potent immune response in the elderly using the TLR-5 agonist, flagellin, with a recombinant hemagglutinin influenza-flagellin fusion vaccine (VAX125, STF2.HA1 SI). *Vaccine* (2011). 29:4897–902. doi: 10.1016/j.vaccine.2011.05.001
- Kajikawa A, Zhang L, Long J, Nordone S, Stoeker L, LaVoy A, et al. Construction and immunological evaluation of dual cell surface display of HIV-1 gag and *Salmonella enterica* serovar Typhimurium FliC in *Lactobacillus acidophilus* for vaccine delivery. *Clin Vaccine Immunol.* (2012) 19:1374–81. doi: 10.1128/CVI.00049-12
- Sun Y, Shi W, Yang JY, Zhou DH, Chen YQ, Zhang Y, et al. Flagellin-PAC fusion protein is a high-efficacy anti-caries mucosal vaccine. *J Dent Res.* (2012) 91:941–7. doi: 10.1177/0022034512457684



13. Cunningham AF, Khan M, Ball J, Toellner KM, Serre K, Mohr E, et al. Responses to the soluble flagellar protein FljC are Th2, while those to FljC on Salmonella are Th1. *Eur J Immunol.* (2004) 34:2986–95. doi: 10.1002/eji.200425403
14. Didierlaurent A, Ferrero I, Otten LA, Dubois B, Reinhardt M, Carlsen H, et al. Flagellin promotes myeloid differentiation factor 88-dependent development of Th2-type response. *J Immunol.* (2004) 172:6922–30. doi: 10.4049/jimmunol.172.11.6922
15. Trumpfheller C, Longhi MP, Caskey M, Idoyaga J, Bozzacco L, Keler T, et al. Dendritic cell-targeted protein vaccines: a novel approach to induce T-cell immunity. *J Intern Med.* (2012) 271:183–92. doi: 10.1111/j.1365-2796.2011.02496.x
16. Sehgal, K., Dhodapkar, K. M., and Dhodapkar, M. V. (2014). Targeting human dendritic cells *in situ* to improve vaccines. *Immunol Lett.* 162(1 Pt A):59–67. doi: 10.1016/j.imlet.2014.07.004
17. Guilliama M, Ginhoux F, Jakubzick C, Naik SH, Onai N, Schraml BU, et al. Dendritic cells, monocytes and macrophages: a unified nomenclature based on ontogeny. *Nat Rev Immunol.* (2014) 14:571–8. doi: 10.1038/nr13712
18. Guilliama M, Dutertre C. A., Scott C. L., McGovern N., Sychien D., Chakarov S., et al. (2016). Unsupervised high-dimensional analysis aligns dendritic cells across tissues and species. *Immunity* 45, 669–84. doi: 10.1016/j.immuni.2016.08.015
19. Persson EK, Uronen-Hansson H, Semmrich M, Rivollier A, Hagerbrand K, Marsal J, et al. IRF4 transcription-factor-dependent CD103<sup>+</sup>CD11b<sup>+</sup> dendritic cells drive mucosal T helper 17 cell differentiation. *Immunity* (2013) 38:958–69. doi: 10.1016/j.immuni.2013.03.009
20. Joeris T, Muller-Luda K, Agace WW, Mowat AM. Diversity and functions of intestinal mononuclear phagocytes. *Mucosal Immunol.* (2017) 10:845–64. doi: 10.1038/mi.2017.22
21. Mayer JU, Demiri M, Agace WW, MacDonald AS, Svensson-Frej M, Milling SW. Different populations of CD11b(+) dendritic cells drive Th2 responses in the small intestine and colon. *Nat Commun.* (2017) 8:15820. doi: 10.1038/ncomms15820
22. Flores-Langarica A, Bobat S, Marshall JL, Yam-Puc JC, Cook CN, Serre K, et al. Soluble flagellin coimmunization attenuates Th1 priming to Salmonella and clearance by modulating dendritic cell activation and cytokine production. *Eur J Immunol.* (2015) 45:2299–311. doi: 10.1002/eji.201545564
23. Kirchhoff D, Frensch M, Leclerc P, Bumann D, Rausch S, Hartmann S, et al. Identification and isolation of murine antigen-reactive T cells according to CD154 expression. *Eur J Immunol.* (2007) 37:2370–7. doi: 10.1002/eji.200737322
24. Lightfield KL, Persson J, Brubaker SW, Witte CE, von Moltke J, Dunipace EA, et al. Critical function for Naip5 in inflammasome activation by a conserved carboxy-terminal domain of flagellin. *Nat Immunol.* (2008) 9:1171–8. doi: 10.1038/ni.1646
25. Dudziak D, Kamphorst AO, Heidkamp GF, Buchholz VR, Trumpfheller C, Yamazaki S, et al. Differential antigen processing by dendritic cell subsets *in vivo*. *Science* (2007) 315:107–11. doi: 10.1126/science.1136080
26. Uematsu S, Jang MH, Chevrier N, Guo Z, Kumagai Y, Yamamoto M, et al. Detection of pathogenic intestinal bacteria by Toll-like receptor 5 on intestinal CD11c<sup>+</sup> lamina propria cells. *Nat Immunol.* (2006) 7:868–74. doi: 10.1038/ni1362
27. Feng T, Cong Y, Alexander K, Elson CO. Regulation of Toll-like receptor 5 gene expression and function on mucosal dendritic cells. *PLoS ONE* (2012) 7:e35918. doi: 10.1371/journal.pone.0035918
28. Letran SE, Lee SJ, Atif SM, Uematsu S, Akira S, McSorley SJ. TLR5 functions as an endocytic receptor to enhance flagellin-specific adaptive immunity. *Eur J Immunol.* (2011) 41:29–38. doi: 10.1002/eji.201040717
29. Salazar-Gonzalez RM, Srinivasan A, Griffin A, Muralimohan G, Ertelt JM, Ravindran R, et al. Salmonella flagellin induces bystander activation of splenic dendritic cells and hinders bacterial replication *in vivo*. *J Immunol.* (2007) 179:6169–75. doi: 10.4049/jimmunol.179.9.6169
30. Antonialli R, Sulczewski FB, Amorim K, Almeida BDS, Ferreira NS, Yamamoto MM, et al. CpG oligodeoxynucleotides and flagellin modulate the immune response to antigens targeted to CD8 $\alpha$ <sup>+</sup> and CD8 $\alpha$ <sup>-</sup> conventional dendritic cell subsets. *Front Immunol.* (2017) 8:1727. doi: 10.3389/fimmu.2017.01727
31. Zhang Y, Dominguez-Medina C, Cumley NJ, Heath JN, Essex SJ, Bobat S, et al. IgG1 is required for optimal protection after immunization with the purified porin OmpD from Salmonella Typhimurium. *J Immunol.* (2017) 199:4103–9. doi: 10.4049/jimmunol.1700952
32. Lane PJ, MacLennan IC. Impaired IgG2 anti-pneumococcal antibody responses in patients with recurrent infection and normal IgG2 levels but no IgA. *Clin Exp Immunol.* (1986) 65:427–33.
33. Gao, Y., Nish, S. A., Jiang, R., Hou, L., Licon-Limon, P., Weinstein, J. S., et al. (2013). Control of T helper 2 responses by transcription factor IRF4-dependent dendritic cells. *Immunity* 39, 722–732. doi: 10.1016/j.immuni.2013.08.028
34. Williams JW, Tjota MY, Clay BS, Vander Lugt B, Bandukwala HS, Hrusch CL, et al. Transcription factor IRF4 drives dendritic cells to promote Th2 differentiation. *Nat Commun.* (2013) 4:2990. doi: 10.1038/ncomms3990
35. Demiri M, Muller-Luda K, Agace WW, Svensson-Frej M. Distinct DC subsets regulate adaptive Th1 and 2 responses during *Trichuris muris* infection. *Parasite Immunol.* (2017) 39, 1–10. doi: 10.1111/pim.12458

**Conflict of Interest Statement:** The authors declare that the research was conducted in the absence of any commercial or financial relationships that could be construed as a potential conflict of interest.

Copyright © 2018 Flores-Langarica, Cook, Müller Luda, Persson, Marshall, Beristain-Covarrubias, Yam-Puc, Dahlgren, Persson, Uematsu, Akira, Henderson, Lindbom, Agace and Cunningham. This is an open-access article distributed under the terms of the Creative Commons Attribution License (CC BY). The use, distribution or reproduction in other forums is permitted, provided the original author(s) and the copyright owner(s) are credited and that the original publication in this journal is cited, in accordance with accepted academic practice. No use, distribution or reproduction is permitted which does not comply with these terms.