



Molecular and Cellular Mechanisms Underlying the Initiation and Progression of Alport Glomerular Pathology

Dominic Cosgrove* and Jacob Madison

Boys Town National Research Hospital, Omaha, NE, United States

Alport syndrome results from a myriad of variants in the COL4A3, COL4A4, or COL4A5 genes that encode type IV (basement membrane) collagens. Unlike type IV collagen $\alpha 1(\text{IV})_2\alpha 2(\text{IV})_1$ heterotrimers, which are ubiquitous in basement membranes, $\alpha 3/\alpha 4/\alpha 5$ have a limited tissue distribution. The absence of these basement membrane networks causes pathologies in some, but not all these tissues. Primarily the kidney glomerulus, the stria vascularis of the inner ear, the lens, and the retina as well as a rare link with aortic aneurysms. Defects in the glomerular basement membranes results in delayed onset and progressive focal segmental glomerulosclerosis ultimately requiring the patient to undergo dialysis and if accessible, kidney transplant. The lifespan of patients with Alport syndrome is ultimately significantly shortened. This review addresses the consequences of the altered glomerular basement membrane composition in Alport syndrome with specific emphasis on the mechanisms underlying initiation and progression of glomerular pathology.

Keywords: glomerulus, glomerular basement membrane, podocyte, mesangial cell, pathology

OPEN ACCESS

Edited by:

Dorin-Bogdan Borza,
Meharry Medical College,
United States

Reviewed by:

Rachel Lennon,
The University of Manchester,
United Kingdom
Dale Abrahamson,
University of Kansas Medical Center,
United States

*Correspondence:

Dominic Cosgrove
dominic.cosgrove@boystown.org

Specialty section:

This article was submitted to
Nephrology,
a section of the journal
Frontiers in Medicine

Received: 30 December 2021

Accepted: 17 January 2022

Published: 09 February 2022

Citation:

Cosgrove D and Madison J (2022)
Molecular and Cellular Mechanisms
Underlying the Initiation and
Progression of Alport Glomerular
Pathology. *Front. Med.* 9:846152.
doi: 10.3389/fmed.2022.846152

INTRODUCTION

In terms of rare diseases, Alport syndrome is relatively common with recent genetic evidence suggesting a frequency approaching 1 in 2,000 people (1). Most affected individuals (80-85%) harbor variants in the X-linked COL4A5 gene, and thus are hemizygous with mosaicism in female carriers associated with a milder form of the disease who pass the variants to half of their sons. The remaining cases are caused by variants in COL4A3 and COL4A4 genes and are inherited in an autosomal recessive manner (2, 3). There is a strong genotype/phenotype association with the severity of kidney disease, with about 40% of the cases caused by Gly-X-Y missense variants, which result in a milder form of the disease and more severe variants (nonsense variants deletions, etc.) accounting for most cases (4). In most, but not all cases, the variants lead to the absence of all three type IV collagen chains in the glomerular basement membrane (GBM). This change in basement membrane composition results in a GBM that is notably thinner and contains fewer interchain disulfide crosslinks which weakens the elastic integrity of the glomerular capillary tufts making them susceptible to the mechanical forces of normal capillary blood flow (5). Consistent with this, glomeruli from Col4A3-/- Alport mice have a 30% reduction in Young's modulus, a measure of biophysical stiffness (6). When the capillary tufts are subjected to excessive forces under hypertensive conditions, the rate of disease progression is accelerated in the mouse (7). It was recently shown using intravital microscopy that the glomerular capillaries in Alport mice have a

significantly enlarged diameter compared to wild type mice likely owing to the enhanced elasticity of the thinner and less crosslinked GBM collagen network (8). This may contribute to why ACE inhibitors, which reduce intraglomerular pressure, slow the progression of Alport kidney disease in both mice and human (9–11). A recent mass-spectroscopy-based proteomics study demonstrated an overall reduction in basement membrane proteins in glomerular matrix from Alport mice relative to wild type mice with an overall increase in interstitial matrix proteins (12). These changes are likely to contribute to the biomechanical properties of the GBM in Alport syndrome. Of note, there are some variants that change the biochemical properties of the GBM without eliminating $\alpha3/\alpha4/\alpha5$ protomers. For example, a variant that causes in frame skipping of exon 30 results in a GBM with normal type IV collagen composition (albeit less $\alpha3/\alpha4/\alpha5$ networks than wild type) results in a robust Alport kidney phenotype in both mice and men (13). This underscores the importance of the structural integrity of the GBM in maintaining normal GBM function and supports the idea that biomechanical strain is a major contributor to disease onset.

The mature glomerular basement membrane is two separate networks of type IV collagen; a subendothelial network comprised of type IV collagen $\alpha1_2/\alpha2$ protomers and a thicker subepithelial network comprised of type IV collagen $\alpha3/\alpha4/\alpha5$ protomers (14). These networks contribute to both the structural integrity and the assembly of the GBM (15, 16). It has been suggested based on super resolution analysis of GBM protein architecture that the type IV collagen $\alpha1_2/\alpha2$ network might be close enough to activate podocyte collagen receptors discoidin domain receptor 1 (DDR1) and integrin $\alpha2\beta1$ while the $\alpha3/\alpha4/\alpha5$ network in wild type mice is central to the GBM and thus too distant to engage collagen receptors on podocytes (17). Double knockouts of COL4A3 and either DDR1 or integrin $\alpha2$ show attenuated kidney disease progression, implicating these receptors as contributors to the pathobiology of Alport glomerular disease (18, 19). Definitive proof of collagen receptor activation in Alport podocytes is lacking, however.

ALPORT GLOMERULAR DISEASE ONSET

Even though the GBM type IV collagen network is congenitally structurally different in Alport syndrome, the GBM functions to prevent proteinuria and maintain a healthy glomerular filtration rate for several weeks in mice and several years in humans. If this functional competence could be maintained through therapeutic intervention, end stage kidney disease (ESRD) can be delayed, and lifespan increased. After proteinuria is established the current standard of care, angiotensin converting enzyme inhibitors (ACEi), have reduced efficacy (10, 11). This is also true in the mouse models (9). Thus, the driver(s) of glomerular disease onset should reveal therapeutic target(s) with maximum efficacy for blocking or slowing the Alport kidney disease progression.

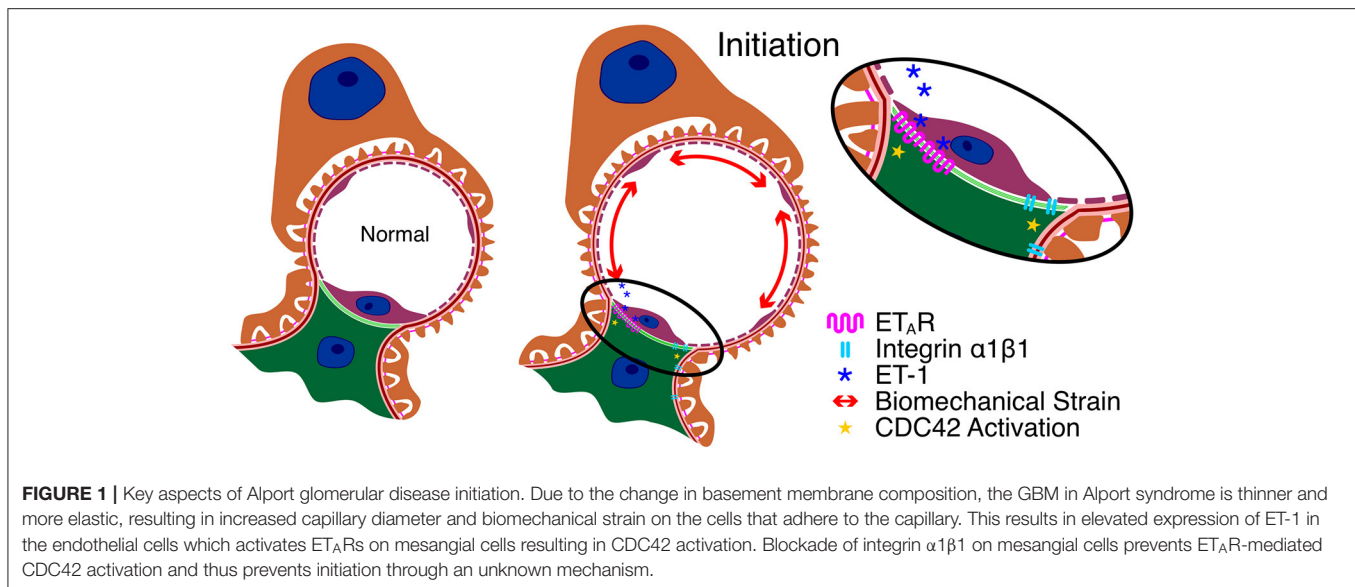
One of the earliest events documented to date is significantly elevated expression of endothelin-1 (ET-1) in the endothelial cells of Alport glomeruli (20). This is observed as early as 2 weeks in the 129Sv ARAS model and 5 weeks in the Bl/6 XLAS model;

before proteinuria is observed and before notable ultrastructural defects in the GBM are observed. Expression of ET-1 is further elevated when mice are made hypertensive, suggesting that the induction of ET-1 is a consequence of elevated biomechanical strain on the glomerular capillary tufts. One consequence of elevated ET-1 expression is the activation of endothelin A receptors (ET_ARs) on mesangial cells. Activated ET_ARs lead to downstream activation of CDC42 resulting in the formation of mesangial filopodia. The filopodia progressively invade the sub-endothelial aspect of the glomerular basement membrane and deposit mesangial matrix proteins including laminin 211 in the GBM (21). Filopodial invasion was validated by 3-dimensional electron microscopy (22). In this same work, podocyte process invasion of the GBM was also reported. Laminin 211 has been shown to activate focal adhesion kinase (FAK) on glomerular podocytes resulting in NF-kappaB activation which results in elevated expression of pro-inflammatory cytokines as well as matrix metalloproteinases (23). Blocking FAK or ET_ARs with small molecule inhibitors ameliorates Alport GBM disease (20, 23, 24). Laminin 211 is deposited in the GBM in Alport dog models as well as humans (20, 25) confirming this process as a relevant pathological mediator in patients with Alport syndrome. In addition to aberrant cell signaling, laminin 211 in the GBM contributes to the GBM permeability defects (26), suggesting its progressive accumulation in the GBM is relevant to the progressive increase in proteinuria. Thus, disease onset involves three glomerular cell types: cross-talk between the glomerular endothelial cells and mesangial cells resulting in the deposition of mesangial ECM in the GBM, which causes podocyte injury.

Over 20 years ago, a connection between integrin $\alpha1\beta1$ and the deposition of laminin 211 in Alport GBM was described where deletion of *ITGA1* significantly slowed the rate of laminin 211 deposition in the GBM and increased lifespan by 50% (27). Since then, we noted that $\alpha1\beta1$ integrin in glomerular mesangial cells is required for lipopolysaccharide-mediated activation of CDC42 and the formation of mesangial filopodia (21). Thus, there appears to be a convergence between blocking integrin $\alpha1\beta1$ receptors and blocking ET_ARs in the activation pathway for CDC42 in glomerular mesangial cells and thus $\alpha1$ integrin itself may be a relevant target for blocking events related to glomerular disease initiation in Alport syndrome. Key aspects of Alport glomerular disease initiation are summarized in **Figure 1**.

ALPORT GLOMERULAR DISEASE PROGRESSION

Once the mesangial filopodia begin to invade the subendothelial space of the glomerular capillaries, we begin to observe the deposition of mesangial matrix proteins in the GBM. This includes laminin 211, which has been implicated in directly injuring podocytes (23). While podocyte injury by laminin $\alpha2$ was shown to be mediated by FAK activation leading to NFkappaB activation and the induction of MMPs and pro-inflammatory cytokines, the specific receptors on podocytes that mediate FAK activation have not yet been identified. Collagen-mediated podocyte damage was shown to be the result of DDR1



and integrin α 2 β 1 activation (18, 19). The downstream effector functions of this co-receptor signaling includes both previously recognized Alport glomerular disease mediators as well as several genes that have been implicated in podocyte injury and/or CKD in other disease models but not yet implicated in Alport glomerular pathogenesis. Previous work showed that double knockouts of COL4A3 and either DDR1 or integrin α 2 β 1 resulted in attenuated kidney disease progression in the autosomal Alport mouse model, clearly implicating aberrant DDR1 and/or α 2 β 1 signaling in Alport glomerular pathogenesis (18, 19).

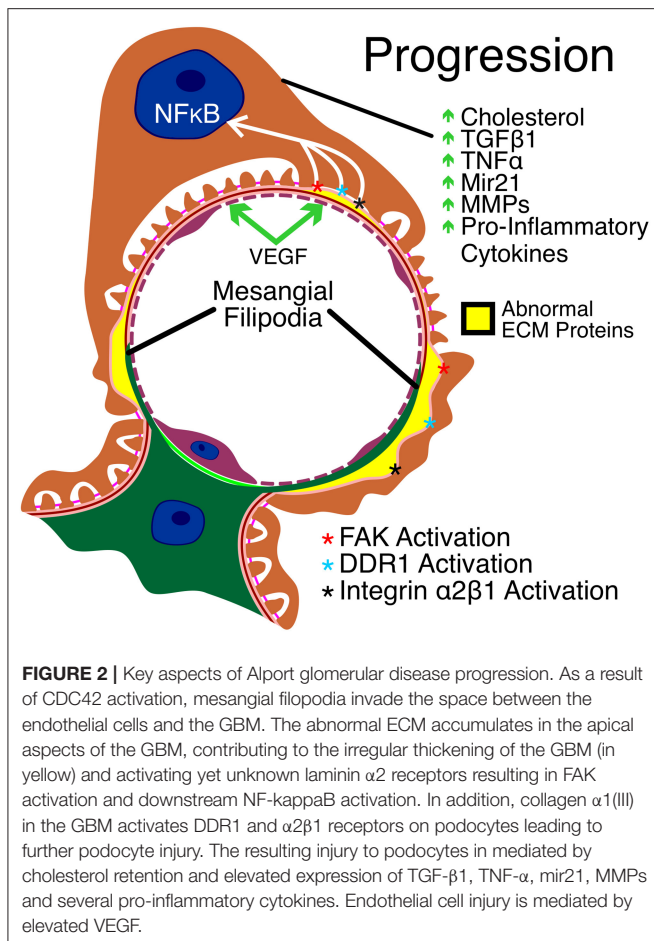
One of the earliest cytokines implicated in Alport kidney and glomerular pathogenesis was TGF- β 1 (28, 29). In the glomerulus, TGF- β 1 blockade prevented GBM dysmorphology but did not improve lifespan (27) in the interstitium, TGF- β 1 blockade prevented the genesis of interstitial myofibroblasts and interstitial fibrosis (30). TGF- β 1 signaling has been directly implicated in studies using STAT3 inhibitors which slowed the progression of Alport kidney pathogenesis in a mouse model (31). Blockade of the Activin type II receptor, a member of the TGF- β receptor family, attenuated Alport glomerular and interstitial disease progression as well (32). BMP-7 is an inhibitor of the TGF- β signaling cascade that induces fibrosis. It has been shown in animal models, including an Alport mouse model, that recombinant BMP-7 ameliorates kidney disease (33). Along these same lines, deletion of the natural BMP-7 antagonist uterine sensitization-associated gene 1 (USAG1) in an Alport mouse model ameliorated progression of glomerular and interstitial disease (34). TGF- β 1 might be an early indicator of Alport kidney pathogenesis as both serum and urinary TGF- β 1 were significantly higher in pre-proteinuric Alport patients compared to controls (35). Collectively this work makes a definitive connection between TGF- β and Alport kidney disease progression.

Cholesterol accumulates in the podocytes in models of focal segmental glomerulosclerosis (FSGS) as well as Alport

syndrome (36). Treatment with cyclodextrins which promote cholesterol efflux ameliorates the progression of Alport kidney disease. These compounds cause significant hearing loss in humans (37) necessitating the identification of alternate means to stimulate cholesterol efflux. Recently small molecules have been identified that activate ATP-binding cassette transporter (ABCA1)-mediated cholesterol efflux via targeting Oxysterol Binding Protein Like 7 (OSBPL7) (38). This approach also ameliorated Alport kidney disease progression and increased lifespan by about 20%. Interestingly DDR1 activation is linked to lipotoxicity (39), which may partially explain why deletion of DDR1 in Alport mice slows kidney disease progression (18).

Capillary endothelial cell damage also contributes to Alport glomerular disease progression. It was shown that injection of amniotic fluid stem cells would slow the progression of Alport kidney disease (40). It was later shown that vesicles derived from these stem cells protect against VEGF-induced endothelial cell damage, showing that VEGF plays an important role in Alport glomerular pathology and that trapping of VEGF by these vesicles represents a viable targeted approach for slowing the disease progression (41).

Podocytopenia is observed in Alport syndrome. Tumor necrosis factor- α has been implicated in podocyte apoptosis that might contribute to reduced podocyte numbers (42). More recently it was shown that Alport podocytes during progression of the glomerular disease re-enter the cell cycle, passing the G1/S checkpoint which can lead to podocyte detachment, contributing to reduced podocyte numbers (43). Podocytopenia has been directly linked to glomerulosclerosis in models of FSGS, suggesting that TNF- α may be a prominent effector of glomerular disease progression in Alport syndrome (44). Key aspects of Alport glomerular disease progression are summarized in **Figure 2**.



CLINICAL TRIALS: WHERE ARE WE NOW?

Many potential therapeutic targets have been inferred from pre-clinical studies of the mouse model, but never made it to clinical trials. These include key cell signaling targets including the BMP antagonist USAG1 (34), α1β1 integrin (27) α2β1 integrin (19), DDR1 (18), αvβ6 integrin (45), STAT3 (31), lysyl oxidase like-2 (46), focal adhesion kinase (23) and osteopontin (47). Other targets include epigenetic modification by histone deacetylases (48), and matrix metalloproteinases including MMP 12 (49). Recently the diabetes drug metformin was shown to ameliorate the severity of Alport kidney disease in the XLAS mouse model (50). While metformin had no effect on extending lifespan in the 129 Sv ARAS model it did moderately increase lifespan in the Bl/6 XLAS model. All of these approaches act on elements of disease progression, which likely accounts for their limited capacity to slow disease progression and increase lifespan.

Other pre-clinical studies have been conducted that attempt to replace the defective type IV collagen gene product with a fully functional one. Since these approaches actually aim to repair the GBM composition, they have the capacity to arrest glomerular disease initiation and thus provide maximum therapeutic benefit. The first attempt was using gene therapy to introduce a full-length type IV collagen α5 mRNA into dog

podocytes by direct effusion of viral particles into the kidney artery. The work showed some promise but was ultimately unsuccessful (51). Heidet et al. (52) showed that introduction of the human α3(IV)/α4(IV) genes by way of transgenesis using a yeast artificial chromosome rescued the phenotype, albeit small defects in the GBM were observed. Related to this, Lin et al. (53) showed using a tamoxifen-inducible transgene, that introduction of full-length collagen α3(IV) would fully rescue when the transgene was induced at post-natal day 1, and to a lesser extent when introduced at post-natal day 21 (pre-proteinuric mice), providing proof of concept that gene therapy (or gene editing) may be a feasible approach for improving kidney function in Alport patients. Stem cell therapy in Alport mice has also been attempted using bone marrow-derived stem cells (54, 55) and stem cells from amniotic fluid (40) with very limited success.

Several therapeutic approaches are in either the planning or active stages of clinical trials in Alport patients. These include Bardoxylone methyl, a nuclear factor erythroid 2-related factor 2 (NRF2) agonist that regulates reduction/oxidation reactions and NF-kappa B activation, which successfully filed an NDA. Recent setbacks suggest that this approach might not meet FDA expectations. Concerns included a lack of pre-clinical work in animal models and a poorly understood increase in proteinuria that may reflect elevated intraglomerular pressure which itself could be pathologic. The endothelin A receptor antagonist (ETA_R) atrasentan is currently in Phase 2 clinical trials for Alport syndrome. Of note, a similar ETA_R antagonist, sitaxentan, improved kidney function in Alport mice, but increased lifespan by only 20% (20). Recruitment of Alport patients has begun for a planned trial using the anti-microRNA-21 Lademirsen, which was shown in Alport mice studies to improve kidney function and lifespan by 50% (56). Preliminary work in humans using sodium-glucose cotransporter-2 inhibitors showed some promise in Alport patients and other forms of CKD, however larger numbers will be needed to see if the data is indeed significant (57). Importantly, none of these therapeutic approaches has been shown in animal models to provide any benefit beyond the standard of care (ACEi or ARBs) except for metformin, and for this only in the 129 Sv ARAS model (50).

SUMMARY

The initiation and progression of Alport glomerular pathogenesis involves extensive cellular crosstalk between the endothelial cells, mesangial cells, and podocytes. Mesangial cell-derived ECM deposition in the GBM clearly plays an important role in aberrant podocyte cell signaling resulting in podocyte injury which is a major of glomerular disease progression. Given that Alport syndrome is the result of variants in COL4A3, COL4A4 or COL4A5 genes, the ultimate therapy would correct the variant(s) using a gene editing approach, replace the defective network using recombinant collagen α3/α4/α5 protomers, or introduce a correct copy of the defective gene to enough podocytes to be therapeutically beneficial. Such procedures would likely need to be administered before the onset of

proteinuria. Until such therapies are available the best approach would be to delay the glomerular disease onset for as long as possible and then use approaches that slow progression additively or synergistically with the standard of care (ACEi or ARBs).

AUTHOR CONTRIBUTIONS

DC wrote and edited the manuscript. JM produced the figures and edited the manuscript. Both authors contributed to the article and approved the submitted version.

REFERENCES

- Savige J, Harraka P. Pathogenic variants in the genes affected in Alport syndrome (COL4A3-COL4A5) and their association with other kidney conditions: a review. *Am J Kidney Dis.* (2021) 78:857–64. doi: 10.1053/j.ajkd.2021.04.017
- Lemmink HH, Mochizuki T, van den Heuvel LP, Schröder CH, Barrientos A, Monnens LA. Mutations in the type IV collagen alpha 3 (COL4A3) gene in autosomal recessive Alport syndrome. *Hum Mol Genet.* (1994) 3:1269–73. doi: 10.1093/hmg/3.8.1269
- Mochizuki T, Lemmink HH, Mariyama M, Antignac C, Gubler MC, Pirson Y. Identification of mutations in the alpha 3(IV) and alpha 4(IV) collagen genes in autosomal recessive Alport syndrome. *Nat Genet.* (1994) 8:77–81. doi: 10.1038/ng0994-77
- Gibson J, Fieldhouse R, Chan MMY, Sadeghi-Alavijeh O, Burnett L, Izzi V. Prevalence estimates of predicted pathogenic COL4A3-COL4A5 variants in a population sequencing database and their implications for Alport Syndrome. *J Am Soc Nephrol.* (2021) 32:2273–90. doi: 10.1681/ASN.2020071065
- Gunwar S, Ballester F, Noelken ME, Sado Y, Ninomiya Y, Hudson BG. Glomerular basement membrane. Identification of a novel disulfide-cross-linked network of alpha3, alpha4, and alpha5 chains of type IV collagen and its implications for the pathogenesis of Alport syndrome. *J Biol Chem.* (1998) 273:8767–75. doi: 10.1074/jbc.273.15.8767
- Wyss HM, Henderson JM, Byfield FJ, Bruggeman LA, Ding Y, Huang C. Biophysical properties of normal and diseased renal glomeruli. *Am J Physiol Cell Physiol.* (2011) 300:C397–405. doi: 10.1152/ajpcell.00438.2010
- Meehan DT, Delimont D, Cheung L, Zallocchi M, Sansom SC, Holczlaw JD. Biomechanical strain causes maladaptive gene regulation, contributing to Alport glomerular disease. *Kidney Int.* (2009) 76:968–76. doi: 10.1038/ki.2009.324
- Gyarmati G, Shroff UN, Izuohara A, Hou X, Sacco DA, Sedrakyan SS, et al. Intravital imaging reveals glomerular capillary distension and endothelial and immune cell activation early in Alport syndrome. *JCI Insight.* (2021) 7:e152676. doi: 10.1172/jci.insight.152676
- Gross O, Beirowski B, Koepke M-L, Kuck J, Reiner M, Addicks K, et al. Preemptive ramipril therapy delays renal failure and reduces renal fibrosis in COL4A3-knockout mice with Alport syndrome. *Kidney Int.* (2003) 63:438–46. doi: 10.1046/j.1523-1755.2003.00779.x
- Gross O, Friede T, Hilgers R, Görlitz A, Gavénis K, Ahmed R. Safety and efficacy of the ACE-inhibitor ramipril in Alport Syndrome: the double-blind, randomized, placebo-controlled, multicenter phase III EARLY PRO-TECT Alport trial in pediatric patients. *ISRN Pediatr.* (2012) 2012:436046. doi: 10.5402/2012/436046
- Gross O, Tönshoff B, Weber LT, Pape L, Latta K, Fehrenbach H. A multicenter, randomized, placebo-controlled, double-blind phase 3 trial with open-arm comparison indicates safety and efficacy of nephroprotective therapy with ramipril in children with Alport's syndrome. *Kidney Int.* (2020) 97:1275–86. doi: 10.1016/j.kint.2019.12.015
- Randles MJ, Lausecker F, Kong Q, Suleiman H, Reid G, Kolatsi-Joannou M. Identification of an altered matrix signature in kidney aging and disease. *JASN.* (2021) 32:1713–32. doi: 10.1681/ASN.2020101442
- Korstanje R, Caputo CR, Doty RA, Cook SA, Bronson RT, Davisson MT. A mouse Col4a4 mutation causing Alport glomerulosclerosis with abnormal collagen $\alpha 3(\text{IV})$ trimers. *Kidney Int.* (2014) 85:1461–8. doi: 10.1038/ki.2013.493
- Boutaud A, Borza DB, Bondar O, Gunwar S, Netzer KO, Singh N. Type IV collagen of the glomerular basement membrane. Evidence that the chain specificity of network assembly is encoded by the noncollagenous NC1 domains. *J Biol Chem.* (2000) 275:30716–24. doi: 10.1074/jbc.M004569200
- Kühn K, Glanville RW, Babel W, Qian RQ, Dieringer H, Voss T. The structure of type IV collagen. *Ann N Y Acad Sci.* (1985) 460:14–24. doi: 10.1111/j.1749-6632.1985.tb51153.x
- Timpl R, Wiedemann H, van Delden V, Furthmayr H, Kühn K. A network model for the organization of type IV collagen molecules in basement membranes. *Eur J Biochem.* (1981) 120:203–11. doi: 10.1111/j.1432-1033.1981.tb05690.x
- Suleiman H, Zhang L, Roth R, Heuser JE, Miner JH, Shaw AS. Nanoscale protein architecture of the kidney glomerular basement membrane. *Elife.* (2013) 2:e01149. doi: 10.7554/eLife.01149.021
- Gross O, Girgert R, Beirowski B, Kretzler M, Kang HG, Kruegel J. Loss of collagen-receptor DDR1 delays renal fibrosis in hereditary type IV collagen disease. *Matrix Biol.* (2010) 29:346–56. doi: 10.1016/j.matbio.2010.03.002
- Rubel D, Frese J, Martin M, Leibnitz A, Girgert R, Miosge N. Collagen receptors integrin alpha2beta1 and discoidin domain receptor 1 regulate maturation of the glomerular basement membrane and loss of integrin alpha2beta1 delays kidney fibrosis in COL4A3 knockout mice. *Matrix Biol.* (2014) 34:13–21. doi: 10.1016/j.matbio.2014.01.006
- Dufek B, Meehan DT, Delimont D, Cheung L, Gratton MA, Phillips G. Endothelin A receptor activation on mesangial cells initiates Alport glomerular disease. *Kidney Int.* (2016) 90:300–10. doi: 10.1016/j.kint.2016.02.018
- Zallocchi M, Johnson BM, Meehan DT, Delimont D, Cosgrove D. $\alpha 1\beta 1$ integrin/Rac1-dependent mesangial invasion of glomerular capillaries in Alport syndrome. *Am J Pathol.* (2013) 183:1269–80. doi: 10.1016/j.ajpath.2013.06.015
- Randles MJ, Collinson S, Starborg T, Mironov A, Krendel M, Königshausen E. Three-dimensional electron microscopy reveals the evolution of glomerular barrier injury. *Sci Rep.* (2016) 6:35068. doi: 10.1038/srep35068
- Delimont D, Dufek BM, Meehan DT, Zallocchi M, Gratton MA, Phillips G. Laminin $\alpha 2$ -mediated focal adhesion kinase activation triggers Alport glomerular pathogenesis. *PLoS ONE.* (2014) 9:e99083. doi: 10.1371/journal.pone.0099083
- Cosgrove D, Liu SC. Diseases: a focus on the glomerular basement membrane in Alport syndrome. *Matrix Biol.* (2017) 57–58:45–54. doi: 10.1016/j.matbio.2016.08.005
- Clark SD, Nability MB, Cianciolo RE, Dufek B, Cosgrove D. X-Linked Alport dogs demonstrate mesangial filopodial invasion of the capillary tuft as an early event in glomerular damage. *PLoS ONE.* (2016) 11:e0168343. doi: 10.1371/journal.pone.0168343
- Abrahamson DR, Isom K, Roach E, Stroganova L, Zelenchuk A, Miner JH. Laminin compensation in collagen alpha3(IV) knockout (Alport) glomeruli contributes to permeability defects. *J Am Soc Nephrol.* (2007) 18:2465–72. doi: 10.1681/ASN.2007030328
- Cosgrove D, Rodgers K, Meehan D, Miller C, Bovard K, Gilroy A. Integrin alpha1beta1 and transforming growth factor-beta1 play distinct roles in alport glomerular pathogenesis and serve as dual targets for metabolic therapy. *Am J Pathol.* (2000) 157:1649–59. doi: 10.1016/S0002-9440(10)64802-X
- Sayers R, Kalluri R, Rodgers KD, Shield CF, Meehan DT, Cosgrove D. Role for transforming growth factor-beta1 in alport renal disease progression. *Kidney Int.* (1999) 56:1662–73. doi: 10.1046/j.1523-1755.1999.00744.x
- Sampson NS, Ryan ST, Enke DA, Cosgrove D, Koteliensky V, Gotwals P. Global gene expression analysis reveals a role for the alpha 1 integrin in renal pathogenesis. *J Biol Chem.* (2001) 276:34182–8. doi: 10.1074/jbc.M102859200
- Rodgers KD, Rao V, Meehan DT, Fager N, Gotwals P, Ryan ST. Monocytes may promote myofibroblast accumulation and apoptosis in Alport renal fibrosis. *Kidney Int.* (2003) 63:1338–55. doi: 10.1046/j.1523-1755.2003.00871.x

31. Yokota T, Omachi K, Suico MA, Kamura M, Kojima H, Fukuda R. STAT3 inhibition attenuates the progressive phenotypes of Alport syndrome mouse model. *Nephrol Dial Transplant*. (2018) 33:214–23. doi: 10.1093/ndt/gfx246
32. Williams MJ, Sugatani T, Agapova OA, Fang Y, Gaut JP, Faugere M, et al. The activin receptor is stimulated in the skeleton, vasculature, heart, and kidney during chronic kidney disease. *Kidney Int*. (2018) 93:147–58. doi: 10.1016/j.kint.2017.06.016
33. Zeisberg M, Bottiglio C, Kumar N, Maeshima Y, Strutz F, Müller GA. Bone morphogenic protein-7 inhibits progression of chronic renal fibrosis associated with two genetic mouse models. *Am J Physiol Renal Physiol*. (2003) 285:F1060–7. doi: 10.1152/ajprenal.00191.2002
34. Tanaka M, Asada M, Higashi AY, Nakamura J, Oguchi A, Tomita M. Loss of the BMP antagonist USAG-1 ameliorates disease in a mouse model of the progressive hereditary kidney disease Alport syndrome. *J Clin Invest*. (2010) 120:768–77. doi: 10.1172/JCI39569
35. Chimenz R, Chirico V, Basile P, Carcione A, Conti G, Monardo P. HMGB-1 and TGF β -1 highlight immuno-inflammatory and fibrotic processes before proteinuria onset in pediatric patients with Alport syndrome. *J Nephrol*. (2021) 34:1915–24. doi: 10.1007/s40620-021-01015-z
36. Mitrofanova A, Molina J, Varona Santos J, Guzman J, Morales XA, Ducasa GM. Hydroxypropyl- β -cyclodextrin protects from kidney disease in experimental Alport syndrome and focal segmental glomerulosclerosis. *Kidney Int*. (2018) 94:1151–9. doi: 10.1016/j.kint.2018.06.031
37. Crumling MA, King KA, Duncan RK. Cyclodextrins and iatrogenic hearing loss: new drugs with significant risk. *Front Cell Neurosci*. (2017) 11:355. doi: 10.3389/fncel.2017.00355
38. Wright MB, Varona Santos J, Kemmer C, Maugeais C, Carralot J-P, Roever S, et al. Compounds targeting OSBPL7 increase ABCA1-dependent cholesterol efflux preserving kidney function in two models of kidney disease. *Nat Commun*. (2021) 12:4662. doi: 10.1038/s41467-021-24890-3
39. Kim J-J, David JM, Wilbon SS, Santos JV, Patel DM, Ahmad A, et al. Discoidin domain receptor 1 activation links extracellular matrix to podocyte lipotoxicity in Alport syndrome. *EBioMedicine*. (2021) 63:103162. doi: 10.1016/j.ebiom.2020.103162
40. Sedrakyan S, Da Sacco S, Milanese A, Shiri L, Petrosyan A, Varimezova R, et al. Injection of amniotic fluid stem cells delays progression of renal fibrosis. *J Am Soc Nephrol*. (2012) 23:661–73. doi: 10.1681/ASN.2011030243
41. Sedrakyan S, Villani V, Da Sacco S, Tripuraneni N, Porta A, Achena A, et al. Amniotic fluid stem cell-derived vesicles protect from VEGF-induced endothelial damage. *Sci Rep*. (2017) 7:16875. doi: 10.1038/s41598-017-17061-2
42. Ryu M, Mulay RM, Miosge N, Gross O, Anders H-J. Tumour necrosis factor- α drives Alport glomerulosclerosis in mice by promoting podocyte apoptosis. *J Pathol*. (2012) 226:120–31. doi: 10.1002/path.2979
43. Frank CN, Hou X, Petrosyan A, Villani V, Zhao R, Hansen JR. Effect of disease progression on the podocyte cell cycle in Alport Syndrome. *Kidney Int*. (2021) 101:106–18. doi: 10.1016/j.kint.2021.08.026
44. Berger K, Moeller MJ. Podocytopenia, parietal epithelial cells and glomerulosclerosis. *Nephrol Dial Transplant*. (2014) 29:948–50. doi: 10.1093/ndt/gft511
45. Hahm K, Lukashev ME, Luo Y, Yang WJ, Dolinski BM, Weinreb PH. Alpha6 beta6 integrin regulates renal fibrosis and inflammation in Alport mouse. *Am J Pathol*. (2007) 170:110–25. doi: 10.2353/ajpath.2007.060158
46. Cosgrove D, Dufek B, Meehan DT, Delimont D, Hartnett M, Samuelson G. Lysyl oxidase like-2 contributes to renal fibrosis in Col4 α 3/Alport mice. *Kidney Int*. (2018) 94:303–14. doi: 10.1016/j.kint.2018.02.024
47. Ding W, Yousefi K, Goncalves S, Goldstein BJ, Sabater AL, Kloosterboer A. Osteopontin deficiency ameliorates Alport pathology by preventing tubular metabolic deficits. *JCI Insight*. (2018) 3:94818. doi: 10.1172/jci.insight.94818
48. Suh SH, Choi HS, Kim CS, Kim IJ, Cha H, Cho JM. CG200745, a Novel HDAC inhibitor, attenuates kidney fibrosis in a murine model of Alport Syndrome. *Int J Mol Sci*. (2020) 21:E1473. doi: 10.3390/ijms21041473
49. Rao VH, Meehan DT, Delimont D, Nakajima M, Wada T, Gratton MA. Role for macrophage metalloelastase in glomerular basement membrane damage associated with alport syndrome. *Am J Pathol*. (2006) 169:32–46. doi: 10.2353/ajpath.2006.050896
50. Omachi K, Kaseda S, Yokota T, Kamura M, Teramoto K, Kuwazuru J. Metformin ameliorates the severity of experimental Alport syndrome. *Sci Rep*. (2021) 11:7053. doi: 10.1038/s41598-021-86109-1
51. Tryggvason K, Heikkilä P, Pettersson E, Tibell A, Thorner P. Can Alport syndrome be treated by gene therapy? *Kidney Int*. (1997) 51:1493–9. doi: 10.1038/ki.1997.205
52. Heidet L, Borza D-B, Jouin M, Sich M, Mattei M-G, Sadpo Y, et al. A human-mouse chimera of the alpha3alpha4alpha5(IV) collagen protomer rescues the renal phenotype in Col4a3-/- Alport mice. *Am J Pathol*. (2003) 163:1633–44. doi: 10.1016/S0002-9440(10)63520-1
53. Lin X, Suh JH, Go G, Miner JH. Feasibility of repairing glomerular basement membrane defects in Alport syndrome. *J Am Soc Nephrol*. (2014) 25:687–92. doi: 10.1681/ASN.2013070798
54. Sugimoto H, Mundel TM, Sund M, Xie L, Cosgrove D, Kalluri R. Bone-marrow-derived stem cells repair basement membrane collagen defects and reverse genetic kidney disease. *Proc Natl Acad Sci USA*. (2006) 103:7321–6. doi: 10.1073/pnas.0601436103
55. Prodomidi EI, Poulosom R, Jeffery R, Roufousse CA, Pollard PJ, Pusey CD. Bone marrow-derived cells contribute to podocyte regeneration and amelioration of renal disease in a mouse model of Alport syndrome. *Stem Cells*. (2006) 24:2448–55. doi: 10.1634/stemcells.2006-0201
56. Gomez IG, MacKenna DA, Johnson BG, Kaimal V, Roach AM, Ren S, et al. Anti-microRNA-21 oligonucleotides prevent Alport nephropathy progression by stimulating metabolic pathways. *J Clin Invest*. (2015) 125:141–56. doi: 10.1172/JCI75852
57. Boeckhaus J, Gross O. Sodium-Glucose Cotransporter-2 inhibitors in patients with hereditary podocytopathies, Alport Syndrome, and FSGS: a case series to better plan a large-scale study. *Cells*. (2021) 10:1815. doi: 10.3390/cells10071815

Conflict of Interest: The authors declare that the research was conducted in the absence of any commercial or financial relationships that could be construed as a potential conflict of interest.

Publisher's Note: All claims expressed in this article are solely those of the authors and do not necessarily represent those of their affiliated organizations, or those of the publisher, the editors and the reviewers. Any product that may be evaluated in this article, or claim that may be made by its manufacturer, is not guaranteed or endorsed by the publisher.

Copyright © 2022 Cosgrove and Madison. This is an open-access article distributed under the terms of the Creative Commons Attribution License (CC BY). The use, distribution or reproduction in other forums is permitted, provided the original author(s) and the copyright owner(s) are credited and that the original publication in this journal is cited, in accordance with accepted academic practice. No use, distribution or reproduction is permitted which does not comply with these terms.