



# Corrigendum: RfpA, RfpB, and RfpC Are the Master Control Elements of Far-Red Light Photoacclimation (FaRLiP)

## OPEN ACCESS

### Edited and reviewed by:

Martin G. Klotz,  
Washington State University,  
United States

### \*Correspondence:

Donald A. Bryant  
dab14@psu.edu

### †Present Address:

Fei Gan,  
The Scripps Research Institute,  
La Jolla, CA, United States

### Specialty section:

This article was submitted to  
Microbial Physiology and Metabolism,  
a section of the journal  
Frontiers in Microbiology

**Received:** 11 January 2019

**Accepted:** 04 March 2019

**Published:** 22 March 2019

### Citation:

Zhao C, Gan F, Shen G and Bryant DA  
(2019) Corrigendum: RfpA, RfpB, and  
RfpC Are the Master Control Elements  
of Far-Red Light Photoacclimation  
(FaRLiP). *Front. Microbiol.* 10:549.  
doi: 10.3389/fmicb.2019.00549

Chi Zhao<sup>1</sup>, Fei Gan<sup>1†</sup>, Gaozhong Shen<sup>1</sup> and Donald A. Bryant<sup>1,2\*</sup>

<sup>1</sup> Department of Biochemistry and Molecular Biology, The Pennsylvania State University, University Park, PA, United States,

<sup>2</sup> Department of Chemistry and Biochemistry, Montana State University, Bozeman, MT, United States

**Keywords:** photosynthesis, photosystem I, photosystem II, phycobilisome, chlorophyll *f*, chlorophyll *d*, *Chlorogloeopsis fritschii* PCC 9212, *Chroococcidiopsis thermalis* PCC 7203

## A Corrigendum on

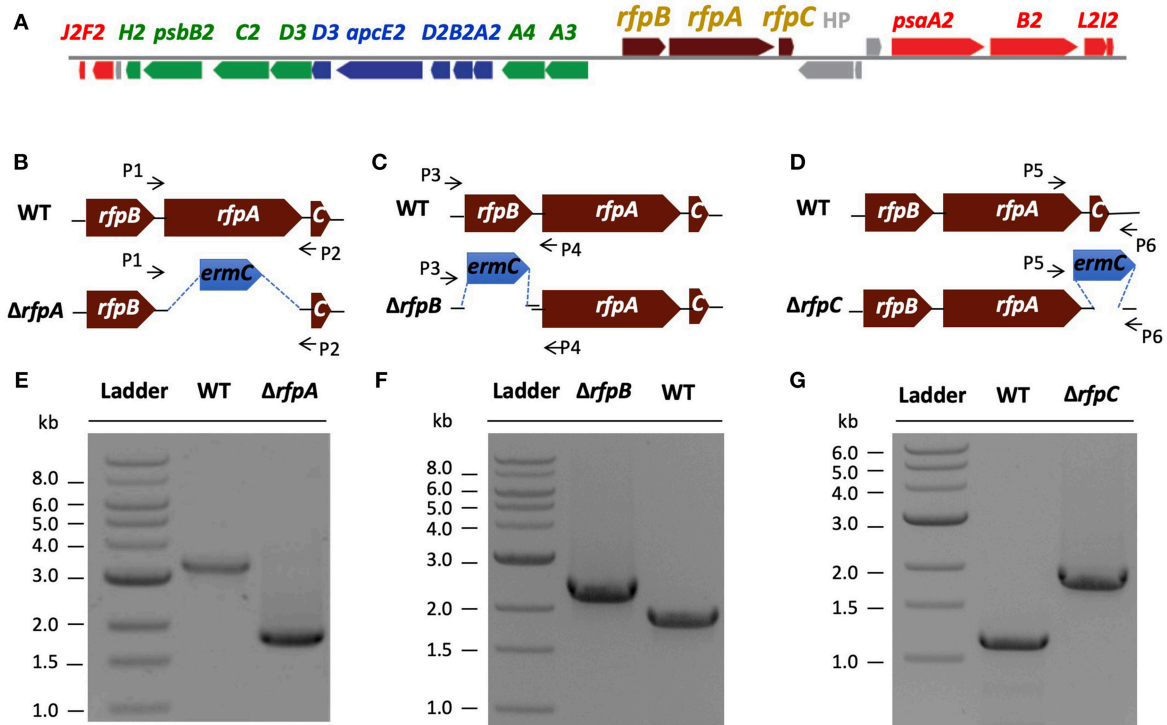
RfpA, RfpB, and RfpC are the Master Control Elements of Far-Red Light Photoacclimation (FaRLiP)

Zhao, C., Gan, F., Shen, G., and Bryant, D. A. (2015). *Front. Microbiol.* 6:1303.  
doi: 10.3389/fmicb.2015.01303

In the original article, there was a mistake in **Figure 1** as published. In Panel F, the lane labeled “ $\Delta rfpB$ ” should have been labeled “WT”, while the lane labeled “WT” should have been labeled “ $\Delta rfpB$ ”. The corrected **Figure 1** appears below.

The authors apologize for this error and state that this does not change the scientific conclusions of the article in any way. The original article has been updated.

Copyright © 2019 Zhao, Gan, Shen and Bryant. This is an open-access article distributed under the terms of the Creative Commons Attribution License (CC BY). The use, distribution or reproduction in other forums is permitted, provided the original author(s) and the copyright owner(s) are credited and that the original publication in this journal is cited, in accordance with accepted academic practice. No use, distribution or reproduction is permitted which does not comply with these terms.



**FIGURE 1** | The organization of the FaRLiP gene cluster in *Chl. fritschii* PCC 9212 and construction and validation of *rfpA*, *rfpB*, and *rfpC* deletion mutants. **(A)** Gene organization of the FaRLiP gene cluster in *Chl. fritschii* PCC 9212. Red boxes represent genes encoding core subunits of PS I; green boxes represent genes encoding core subunits of PS II; blue boxes represent genes encoding core components of the phycobilisome; brown boxes represent regulatory *rfp* genes; and gray boxes represent genes that are not found in other FaRLiP clusters. **(B)** Schematic showing deletion of *rfpA*. The small arrows (P1 and P2) indicate the positions of the primers used for PCR verification of deletion. **(C)** Schematic showing deletion of *rfpB*. The small arrows (P3 and P4) indicate the positions of primers used for PCR verification of the deletion. **(D)** Schematic showing deletion of *rfpC*. The small arrows (P5 and P6) indicate the positions of primers used for PCR verification of the deletion. **(E)** Agarose gel electrophoresis of amplicons showing complete segregation of wild-type and mutant *rfpA* alleles. **(F)** Agarose gel electrophoresis of amplicons showing complete segregation of wild-type and mutant *rfpB* alleles. **(G)** Agarose gel electrophoresis of amplicons showing complete segregation of wild-type and mutant *rfpC* alleles.