



# Reduced Growth of *Staphylococcus aureus* Under High Glucose Conditions Is Associated With Decreased Pentaglycine Expression

Zhen Luo<sup>1</sup>, Shan Yue<sup>2</sup>, Ti Chen<sup>1</sup>, Pengfei She<sup>1</sup>, Yuan Wu<sup>1\*</sup> and Yong Wu<sup>1\*</sup>

<sup>1</sup> Department of Laboratory Medicine, The Third Xiangya Hospital, Central South University, Changsha, China, <sup>2</sup> Department of Laboratory Medicine, Hunan Normal University School of Medicine, Changsha, China

## OPEN ACCESS

### Edited by:

Sujogya Kumar Panda,  
KU Leuven, Belgium

### Reviewed by:

Evandro Leite de Souza,  
Federal University of Paraíba, Brazil  
Debasmita Dubey,  
Sambalpur University, India

### \*Correspondence:

Yong Wu  
wuyong\_zn@csu.edu.cn  
Yuan Wu  
korchim@126.com

### Specialty section:

This article was submitted to  
Microbial Physiology and Metabolism,  
a section of the journal  
Frontiers in Microbiology

**Received:** 23 February 2020

**Accepted:** 07 October 2020

**Published:** 02 November 2020

### Citation:

Luo Z, Yue S, Chen T, She P,  
Wu Y and Wu Y (2020) Reduced  
Growth of *Staphylococcus aureus*  
Under High Glucose Conditions Is  
Associated With Decreased  
Pentaglycine Expression.  
*Front. Microbiol.* 11:537290.  
doi: 10.3389/fmicb.2020.537290

The high-glucose-induced cytotoxicity in diabetes has been widely recognized. *Staphylococcus aureus* is the most frequent pathogen isolated from diabetic foot ulcers, but the properties of this bacterium under high glucose conditions remain unclear. *S. aureus* grew in medium usually forms weak biofilm, and which was significantly increased by addition of glucose. However, extracellular DNA (eDNA), an important component of biofilms, was markedly decreased in presence of 15 mM glucose. The reduced eDNA content was not caused by degradation, because the nuclease activity of biofilm supernatants with glucose was significantly decreased due to the acidic pH of the medium. Under planktonic state, the growth of *S. aureus* was significantly decreased in the Luria-Bertani (LB) medium supplemented with 25 mM glucose, and the reduced growth of *S. aureus* by glucose was dose-dependent. Except for glucose, the growth of planktonic *S. aureus* was also markedly decreased by fructose or sucrose. Amounts of acid metabolites were produced under high glucose conditions, but the survival of planktonic *S. aureus* was unaffected by these acidic conditions. Cells of *S. aureus* from the culture medium with glucose had a thinner cell wall and highly resistant to lysostaphin compared with the bacteria cultured in LB medium. mRNA expression of genes encoding pentaglycine bridges, the substrate of lysostaphin, was significantly decreased in *S. aureus* by glucose. In addition to *S. aureus*, the growth of *Staphylococcus haemolyticus* and *Staphylococcus epidermidis* was also significantly decreased by an excess of glucose, but strains of *Enterococcus faecalis*, *Escherichia coli*, and *Pseudomonas aeruginosa* were unaffected by glucose. In conclusion, the reduced growth of *S. aureus* under high glucose conditions is due to impairment of the unique cell-wall structure, pentaglycine bridges.

**Keywords:** *Staphylococcus aureus*, glucose, eDNA, pentaglycine, lysostaphin resistance

**Abbreviations:** GyrB, gyrase B; MIC, minimum inhibitory concentration; TEM, transmission electron microscopy; eDNA, extracellular DNA; gDNA, genomic DNA; CFUs, colony-forming units; PBS, phosphate-buffered saline; PIA, polysaccharide intercellular adhesin; TSB, tryptic soy broth; MALDI-TOF MS, matrix-assisted laser desorption/ionization time-of-flight mass spectrometry; BA, blood agar; LB, Luria-Bertani; 2-DG, 2-deoxy-D-glucose; SD, standard deviation; *femABX*, factor essential for methicillin resistance ABX; OD, optical density; mRNA, messenger RNA; PCR, polymerase chain reaction; LIA, L-form induced agar.

## INTRODUCTION

Glucose serves as an important carbohydrate for the growth of *Staphylococcus aureus*. Carbohydrates support the growth of *S. aureus* under anaerobic conditions and high nitric oxide stress (Richardson et al., 2008; Vitko et al., 2015). In the skin and soft-tissue infections model, glucose transporters contribute to the growth of *S. aureus*, which favors the fermentation of glucose over other carbohydrates (Vitko et al., 2016). Our previous study has revealed that fermentation of glucose contributes to aggregation of *S. aureus* (Luo et al., 2019). These data indicate that glucose is essential for the growth of *S. aureus*. However, high glucose usually induces endothelial and renal cytotoxicity in diabetic patients (Gao et al., 2015; Yi et al., 2018; Liu et al., 2020). *S. aureus* is the most frequent pathogen isolated from diabetic foot ulcers, but the properties of this bacterium under high glucose conditions remain unclear.

*Staphylococcus aureus* grew in medium usually forms weak biofilm, and addition of glucose to growth medium is a common practice to simulate biofilm formation *in vitro* (You et al., 2014). The matrix within biofilm often consists of polysaccharide intercellular adhesin (PIA). However, surface proteins, such as protein A, promote biofilm development in the absence of PIA exopolysaccharide (Merino et al., 2009). Protein A is a major component of the cell wall of *S. aureus* and is suppressed in tryptic soy broth (TSB) medium containing an excess of glucose (Yamada and Matsumoto, 1986). In addition, glucose enhances the killing efficiency of daptomycin against *S. aureus*, which is independent of the proton motive force and unaffected by physiological changes in pH (Prax et al., 2016). Daptomycin is a lipopeptide antimicrobial agent that hinders peptidoglycan synthesis in the bacterial cell wall. Daptomycin-resistant *S. aureus* are usually associated with thickening of the cell wall (Bertsche et al., 2011; Bayer et al., 2013). Therefore, glucose is known to be involved in cell-wall synthesis in *S. aureus*.

The major structural component of the cell wall of *S. aureus* is peptidoglycan, which is cross-linked by pentaglycine bridges that help maintain the integrity of the cell wall (Labischinski, 1992; Monteiro et al., 2019). Inhibition of pentaglycine bridge formation leads to a substantial decrease in peptidoglycan cross-links and renders the bacteria highly resistant to lysostaphin (Rohrer et al., 1999). Lysostaphin is a glycyglycine endopeptidase secreted by *Staphylococcus simulans*. Lysostaphin cleaves pentaglycine bridges in staphylococci, thereby hydrolyzing the cell wall and lysing the bacteria (Grundling and Schneewind, 2006; Francius et al., 2008). Several studies have demonstrated that *S. aureus* is susceptible to lysostaphin *in vitro* and *in vivo*, indicating that lysostaphin is a promising candidate for treating *S. aureus* infections (Wu et al., 2003; Oluola et al., 2007; Yang et al., 2007; Chen et al., 2014). However, a recent study reported that *S. aureus* was highly resistant to lysostaphin in nutrient-rich TSB medium (Wu et al., 2019). As glucose is the most important carbon source for *S. aureus*, we hypothesized whether glucose contributes to the lysostaphin resistance observed in *S. aureus* cultured in nutrient-rich medium. Lysostaphin-resistant strains usually exhibit reduced logarithmic growth rate and increased

susceptibility to elevated temperatures (Kusuma et al., 2007). Therefore, we speculate that high glucose reduces the expression of pentaglycine, resulted in impaired growth of *S. aureus*.

## MATERIALS AND METHODS

### Bacterial Strains and Culture Conditions

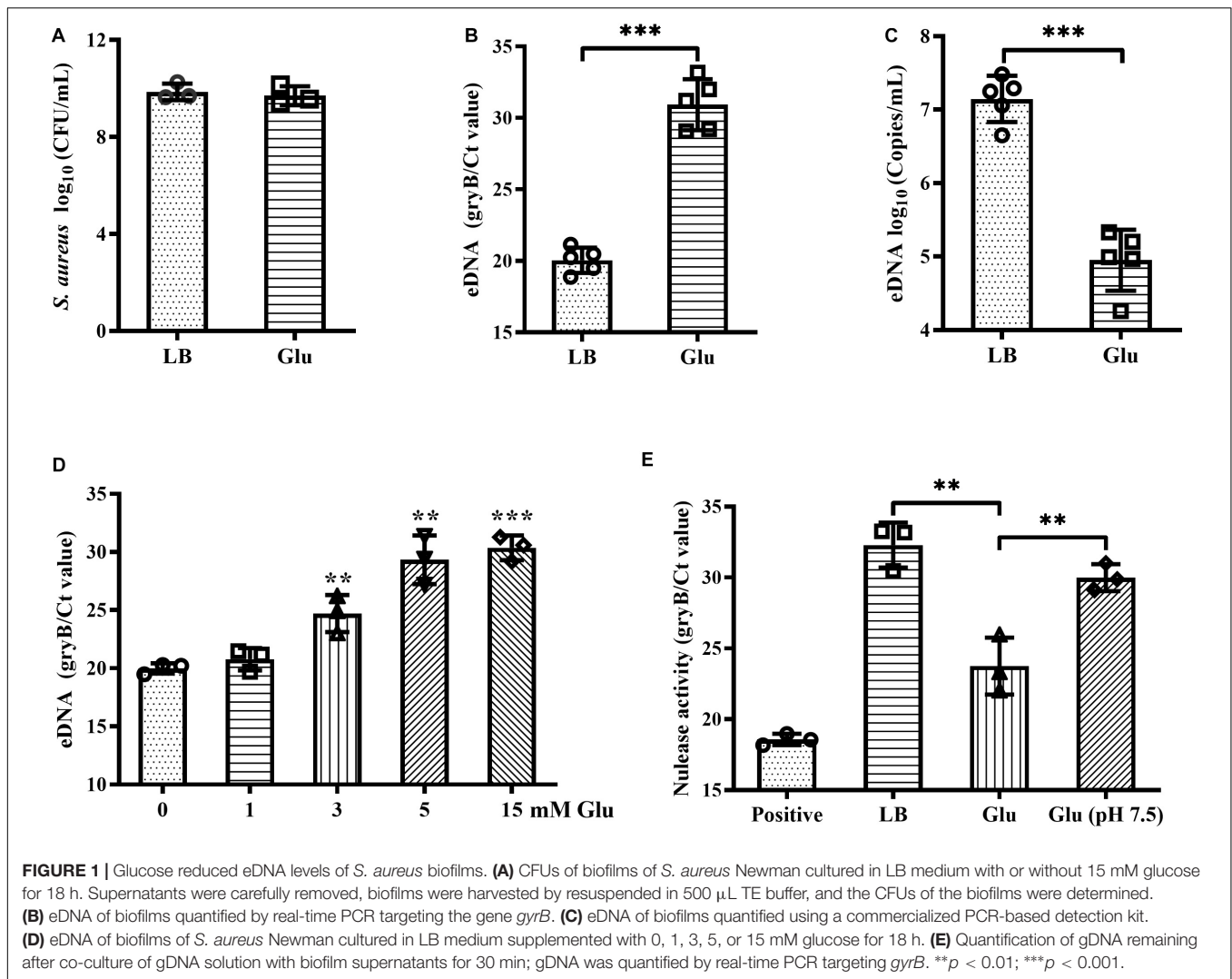
Eight clinical strains of *S. aureus* and one clinical strain of *Staphylococcus haemolyticus* (SH01) were isolated from patients with diabetic foot ulcers in the Department of Laboratory Medicine, Third Xiangya Hospital, Central South University, Hunan, China. All clinical isolates were identified by matrix-assisted laser desorption/ionization time-of-flight mass spectrometry (MALDI-TOF MS; Bruker Biotyper, Germany), and the identification scores were all above 2.0. *S. aureus* Newman was kindly provided by Professor Min Li (Department of Laboratory Medicine, Renji Hospital, Shanghai Jiao Tong University, China), *Staphylococcus epidermidis* RP62A was supplied by Professor Di Qu (Fudan University, Shanghai, China), and *Enterococcus faecalis* ATCC29212, *Escherichia coli* ATCC25922, and *Pseudomonas aeruginosa* ATCC27853 were kindly provided by Juncai Luo (Hunan Changsha Tiandiren Biotech Co., Ltd., Changsha, China). Bacteria were routinely cultured at 37°C on 5% sheep blood agar (BA) plates (Caring Trading Co., Ltd., Guangdong, China).

### CFU Assays

To determine the growth and survival of bacteria (*S. aureus*, *S. haemolyticus*, *S. epidermidis*, *E. faecalis*, *E. coli*, and *P. aeruginosa*) in the presence of sugar, overnight cultures grown in Luria-Bertani (LB) medium at 37°C were diluted 1:100 into fresh LB medium supplemented with 25 mM glucose (Sigma), 25 mM fructose (Sigma), or 12.5 mM sucrose (Sigma). Dose-dependent growth of *S. aureus* in glucose was assessed by culturing *S. aureus* Newman in fresh LB medium supplemented with 0, 5, 15, and 25 mM glucose. All cultures were incubated at 37°C with shaking at 180 rpm, and the colony-forming units (CFUs) were determined after 24 and/or 48 h by plating 5  $\mu$ L serial dilutions on BA, incubating overnight at 37°C, and enumerating the number of colonies.

### Analysis of eDNA by Quantitative PCR

Extracellular DNA (eDNA) within biofilms was examined by using quantitative polymerase chain reaction (PCR) targeting the gene *gyrB* (Dengler et al., 2015). Briefly, overnight cultures of *S. aureus* Newman grown in LB medium at 37°C were diluted 1:100 into fresh LB medium containing 0, 1, 3, 5, or 15 mM glucose and 6 mL of these suspensions were cultured in 6-well flat bottom polystyrene plates (Corning, China) at 37°C for 18 h. The supernatants were carefully removed, and the biofilms were harvested, resuspended in 500  $\mu$ L TE buffer, and mixed at 3000 rpm for 5 min with Mixmate (Eppendorf, Germany). A 10  $\mu$ L aliquot was removed for bacterial numeration. After centrifugation at 12,000 g for 5 min, the supernatant was passed through a 0.22- $\mu$ m pore-size filter (Millipore), then eDNA in the filtered supernatants was purified using a nucleic acid extraction



kit (Da An Gene Co., Ltd., Sun Yat-sen University, China). The eDNA content was quantified by real-time PCR using the following conditions: pre-denaturation at 94°C for 2 min; 40 cycles of denaturation at 94°C for 15 s, annealing at 55°C for 20 s, and elongation at 72°C for 20 s. Primers used for PCR are shown in the **Supplementary Table 1**. The eDNA content was also examined with a commercialized PCR-based molecular methicillin-resistant *S. aureus* (MRSA) detection kit (Liferiver, China) according to manufacturer's instructions.

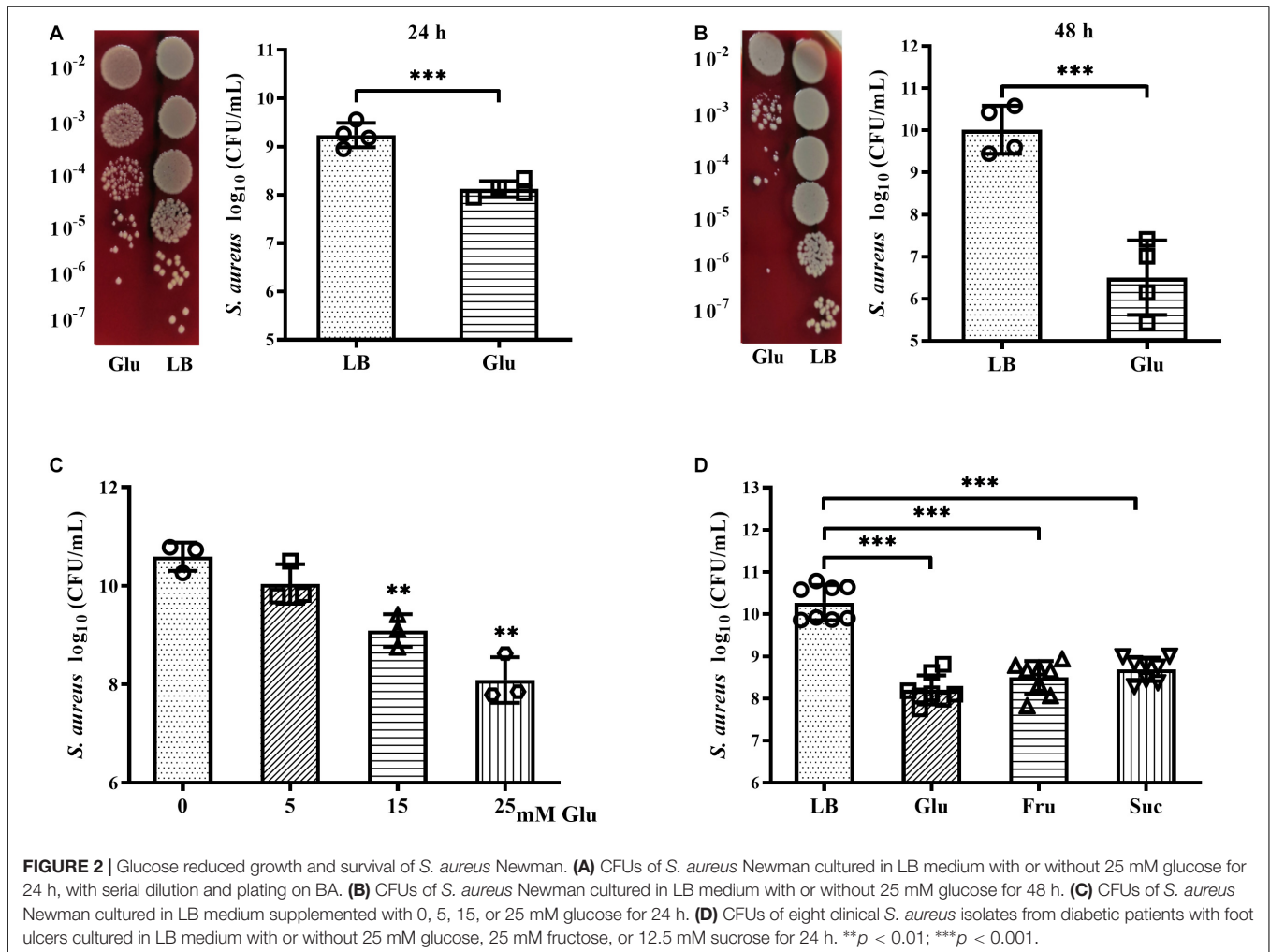
### Nuclease Activity Assays

Overnight cultures of *S. aureus* Newman grown in LB medium at 37°C were diluted 1:100 into fresh LB medium with or without 15 mM glucose, and 6 mL of these suspensions were cultured in 6-well flat bottom polystyrene plates at 37°C for 18 h. The supernatants were collected, centrifuged at 3000 rpm for 10 min, the resulting supernatant was passed through a 0.22- $\mu$ m-pore-size filter, and the resulting filtrate was considered as biofilm supernatants. A culture was also established where the pH of the medium supplemented with glucose was adjusted

to 7.5. For genomic DNA (gDNA) solution, overnight cultures of Newman were centrifuged at 12,000  $g$  for 5 min and the resulting precipitate was washed twice with sterile normal saline, resuspended in TE buffer, and boiled at 100°C for 10 min. The suspension was centrifuged at 12,000  $g$  for 15 min and the supernatant was considered as gDNA solution. Twenty microliters of gDNA solution was added to 180  $\mu$ L biofilm supernatant and incubated at 37°C for 30 min. The remaining gDNA in the solution was quantified by real-time PCR as described above.

### Survival of *S. aureus* Newman Under Acidic Conditions

*Staphylococcus aureus* Newman was grown in LB medium overnight, then 3 mL of this culture was incubated in 15-mL tubes with 25 mM glucose, 20 mM lactic acid (Sigma), or 20 mM acetic acid (Sigma) for 48 h. CFUs of the cultures were determined by performing serial dilutions and plating 5  $\mu$ L on BA or L-form induced agar plates (LIA, Caring Trading Co., Ltd.,



Guangdong, China). Plates were incubated overnight at 37°C before enumeration of colonies.

### Gram-Staining Analysis

A smear of bacterial culture (50  $\mu$ L) was placed on a glass slide, thoroughly air dried, heat fixed, and then stained with a commercial Gram-staining solution (BASO Diagnostics, China). Briefly, the staining process comprised 10 s in crystal violet solution, 10 s in iodine solution, 20 s wash in decolorizer, then a final counter stain with safranin solution for 10 s. The stained slides were examined by an microscope (1000 $\times$ ).

### Transmission Electron Microscopy

Bacteria were collected by centrifugation at 3000  $g$  for 10 min and were washed twice with phosphate-buffered saline (PBS). These bacteria were resuspended in 2.5% glutaraldehyde solution with Millonig's phosphate buffer and shipped to the Transmission Electron Microscopy (TEM) Laboratory at the Pathology Department of Xiangya Hospital, Changsha, Hunan. Specimens were examined and photographed on a Hitachi HT-7700 electron microscope.

### Lysostaphin and Lysozyme Lysis Assay

Lysostaphin lysis assays were performed as previously reported with minor modifications (Grundling et al., 2006). Briefly, overnight cultures of *S. aureus*, *S. epidermidis*, or *S. haemolyticus* were diluted 1:100 into fresh LB medium with or without 25 mM glucose and were cultured at 37°C, 180 rpm for 24 h. For inhibition of glycolysis by 2-deoxy-D-glucose (2-DG), overnight cultures of *S. aureus* were diluted 1:100 into fresh LB medium containing 15 mM glucose and 60 mM 2-DG (Sigma) and were cultured at 37°C, 180 rpm for 8 h. These above cultures were then washed twice with PBS and resuspended to an OD<sub>630</sub> of 1.8–2.1. This value was set as 100% at 0 min. Lysostaphin (Sigma) or lysozyme (Sigma) was added at final concentrations of 10 and 50  $\mu$ g/mL, respectively. OD<sub>630</sub> measurements were recorded at timed intervals, and data were plotted as percent OD<sub>630</sub> values of the initial reading.

### Real-Time RT-PCR

Total RNA extraction was extracted from *S. aureus* Newman as described previously (Beltrame et al., 2015). Initially, cells were lysed using lysostaphin and Trizol (Sigma), then total RNA was



extracted and purified using a nucleic acid extraction kit (Enzo Life Sciences) according to the manufacturer's instructions. The concentration of the extracted RNA was evaluated by using a NanoDrop 1000 (Thermo Fisher Scientific). A total of 1  $\mu$ g RNA was then reverse transcribed to cDNA using a reverse transcription kit (TransGen Biotech, Beijing, China) according to the manufacturer's instructions. Briefly, real-time PCR was conducted under the following conditions: pre-denaturation at 94°C for 5 min; 40 cycles of denaturation at 94°C for 30 s, annealing at 57°C for 20 s, and extension at 72°C for 10 s. Relative expression was determined by using the  $2^{-\Delta\Delta C_t}$  method. The level of transcription was determined relative to the expression of *gyrB*. Primers used for this real-time PCR were reported in a previous study (Supplementary Table 1; Brahma et al., 2019).

## Statistical Analysis

All data produced in this study was normal distributions, and an unpaired Student's *t*-test was used to further evaluate the difference between two groups. All probabilities were two-tailed and  $p < 0.05$  was considered as significant. Data were presented as the mean  $\pm$  standard deviation (SD). Statistical analyses were performed by using GraphPad Prism version 5 (GraphPad Software, San Diego, CA).

## RESULTS

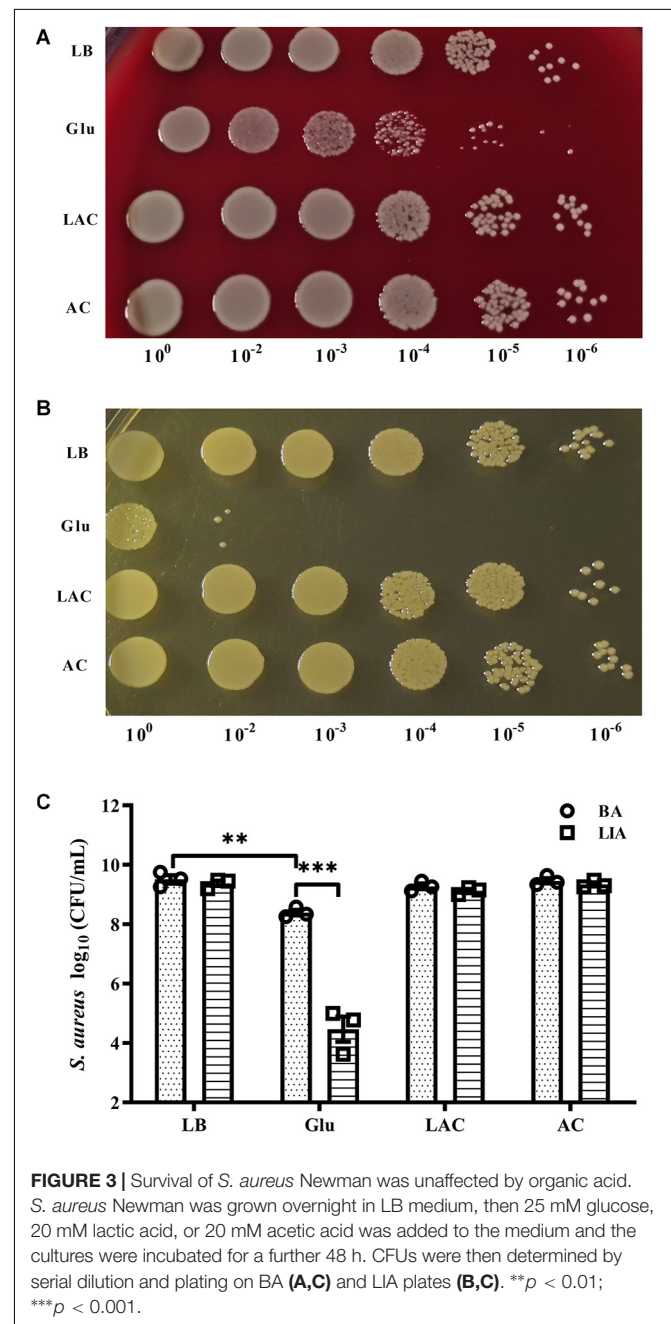
### Reduced eDNA Release of *S. aureus* by Glucose

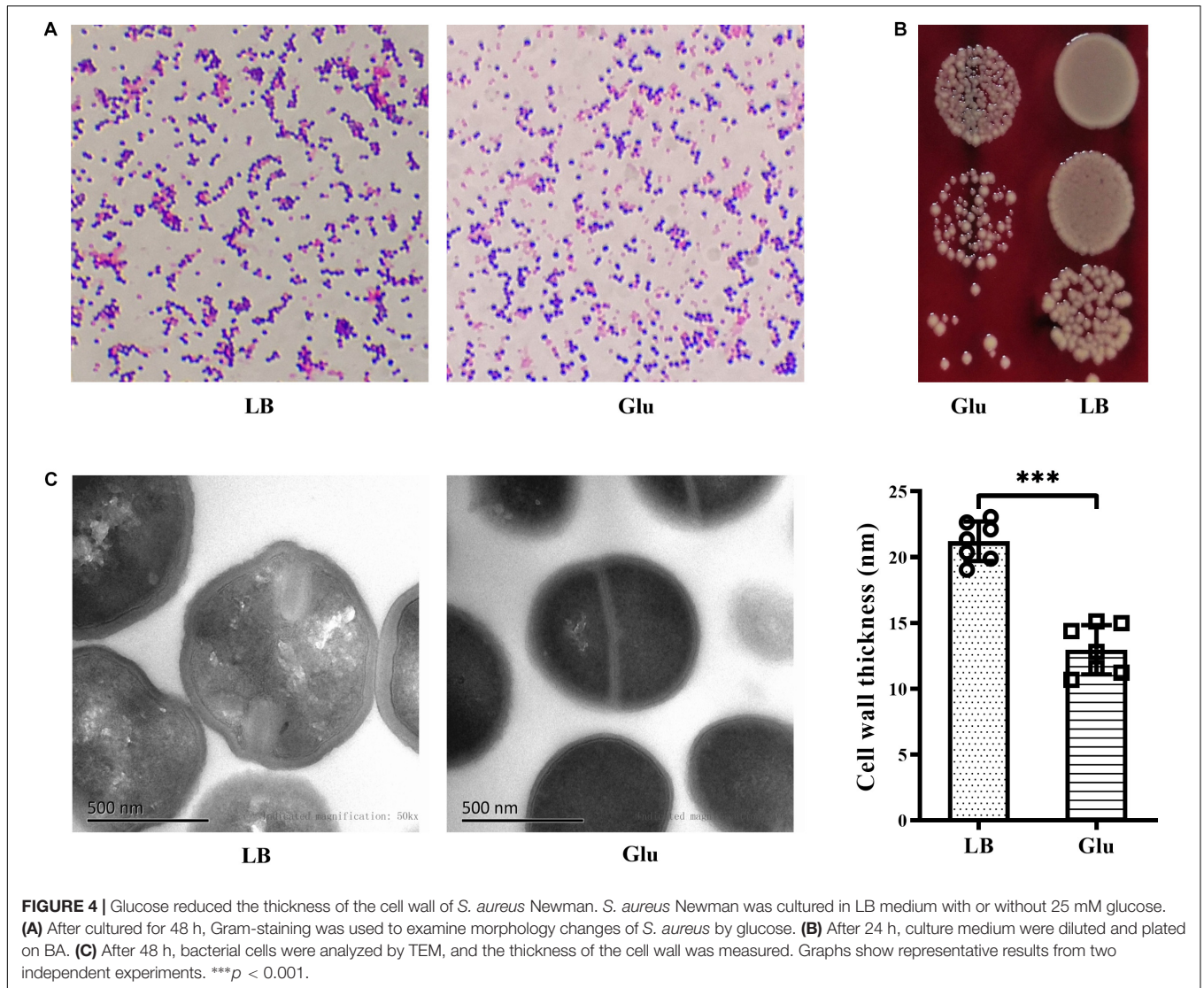
Addition of glucose to the growth medium simulates biofilm formation by *S. aureus* (Boles and Horswill, 2008). However, in this study, the CFUs of biofilms of *S. aureus* Newman were unaffected by addition of 15 mM glucose (Figure 1A). eDNA is an important component of biofilms, and which was markedly decreased by glucose (Figures 1B,C), concordant with results from a previous study (Sugimoto et al., 2018). Within biofilms, this reduction of eDNA by glucose was dose-dependent (Figure 1D). eDNA levels within biofilms are determined by eDNA release and degradation. Therefore, nuclease activity in the biofilm supernatants of *S. aureus* Newman was examined and was found to decrease significantly in the presence of glucose compared with LB medium (Figure 1E). Amount of acidic metabolites produced during the biofilm formation under high glucose condition may affect the nuclease activity of biofilm supernatants. After adjusting the pH of biofilm supernatants with glucose to 7.5, the nuclease activity was restored to almost levels observed in LB medium (Figure 1E). These data indirectly indicate that glucose reduces eDNA release but not eDNA degradation.

### Reduced Growth and Survival of *S. aureus* Under High Glucose Conditions

The growth and survival of planktonic *S. aureus* Newman in the presence of glucose was examined. After culture for 24 h, CFUs of *S. aureus* Newman were reduced nearly 10-fold following

addition of 25 mM glucose (Figure 2A). An increase in culture time to 48 h did not affect the CFUs of *S. aureus* Newman from the medium without glucose, but the CFUs of *S. aureus* Newman from the medium with glucose were further reduced by more than 1000-fold at this time point (Figures 2A,B). These data indicated that growth and survival of *S. aureus* Newman was significantly decreased by high concentrations of glucose. Next, the growth of *S. aureus* Newman in the presence of different concentrations of glucose was investigated. Reduced growth of this strain in the presence of glucose was observed to be dose-dependent (Figure 2C). Finally, the growth of eight clinical





*S. aureus* isolates from patients with diabetic foot ulcers was examined in the presence and absence of glucose, and a high concentration of glucose (25 mM) was found to significantly reduce growth of these clinical isolates after culture for 24 h (Figure 2D). Similar results were observed following addition of fructose or sucrose (Figure 2D). These data indicate that the growth and survival of *S. aureus* is impaired under high glucose conditions.

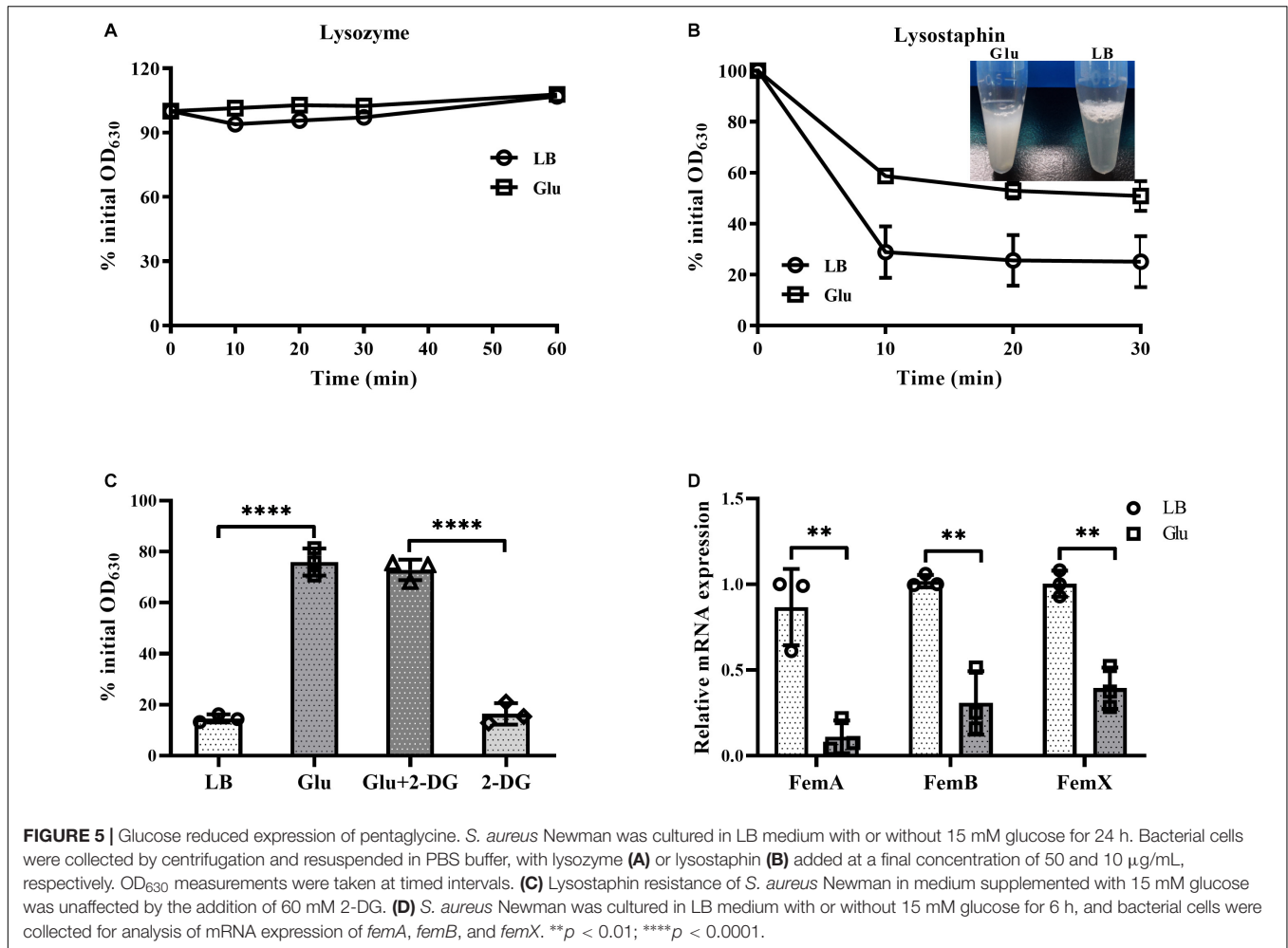
### Survival of *S. aureus* Under Acidic Conditions

The pH of growth medium of *S. aureus* Newman in the planktonic state dropped to 5.0 after culture for 8 h in the presence of 25 mM glucose (data not shown). To determine whether acidic conditions affected survival of *S. aureus*, 20 mM exogenous lactic acid or acetic acid was added to overnight cultures of *S. aureus* Newman, resulting in the culture medium reaching a pH of 5.0 (data not shown). After culture for 48 h

under these acidic conditions, the bacteria were serially diluted and plated on BA and LIA plates. On the BA plates, CFUs of *S. aureus* Newman significantly decreased following addition of 25 mM glucose, but were unchanged following addition of exogenous lactic acid or acetic acid (Figures 3A,C). Similar results were observed on LIA plates (Figures 3B,C). These data indicate that survival of *S. aureus* Newman under high glucose conditions is unaffected by acidic metabolites.

### Reduced Cell-Wall Thickness of *S. aureus* Under High Glucose Conditions

Gram-positive bacteria are known to have a thick cell wall, whereas Gram-negative bacteria have a thin cell wall. Changes in the morphology of *S. aureus* in the presence of glucose were firstly investigated using Gram-staining. *S. aureus* is Gram-positive, but the proportion of Gram-stain-negative bacteria from the culture medium with glucose was markedly increased compared to those



from LB medium (Figure 4A). To exclude the possibility of Gram-negative bacteria as contaminants, the culture medium were diluted, plated on BA, and incubated overnight. Only different-sized colonies of *S. aureus* grew on BA after overnight culture (Figure 4B). TEM analysis was used to further determine structural changes in the cell wall of *S. aureus* Newman in the presence of glucose. As shown in Figure 4C, the thickness of the bacterial cell wall was significantly decreased by a high concentration of glucose. These data indicate that *S. aureus* displays defects in the cell wall under high glucose conditions.

### Reduced Pentaglycine Expression of *S. aureus* Under High Glucose Conditions

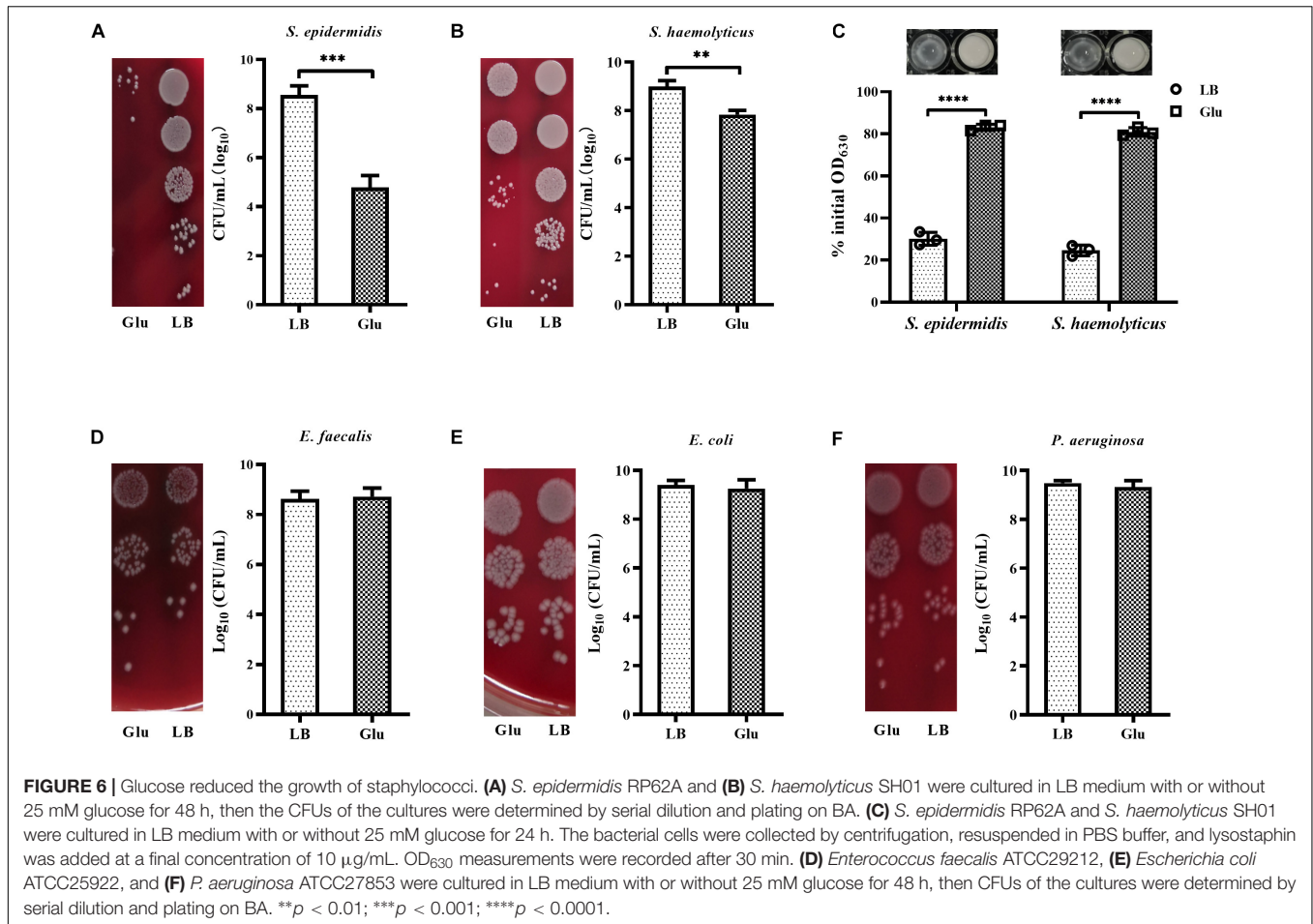
*Staphylococcus aureus* is completely resistant to the hydrolytic activity of lysozyme (Bera et al., 2007). This resistance of *S. aureus* to lysozyme was unaffected by the addition of glucose (Figure 5A). In contrast, *S. aureus* is susceptible to the enzyme lysostaphin, which recognizes the pentaglycine bridges between peptidoglycan chains, and then drives the preferential digestion of cell walls (Grundling and Schneewind, 2006). However, cells of *S. aureus* from the culture medium with glucose were

highly resistant to lysostaphin compared to those from LB medium (Figure 5B). In addition, lysostaphin resistance induced by glucose was unaffected by the inhibitor of glycolysis, 2-DG (Figure 5C). These data suggest that the expression of pentaglycine bridges in *S. aureus* may be affected by glucose. Members of the factor essential for methicillin resistance ABX (*femABX*) family are required for synthesis of pentaglycine crossbridges in staphylococci (Monteiro et al., 2019). Therefore, expression of *femA*, *femB*, and *femX* mRNA was examined in the cultures of *S. aureus*. As shown in Figure 5D, mRNA levels of *femA*, *femB*, and *femX* were significantly decreased in the presence of glucose. These data indicate that high glucose reduces the synthesis of pentaglycine bridges between peptidoglycan chains in *S. aureus*.

### The Unique Cell-Wall Structure Is Associated With the Reduced Growth of Staphylococci by Glucose

Peptidoglycan is the main component of bacterial cell walls, the composition of which varies considerably between species. Staphylococci possess highly cross-linked peptidoglycan due to the presence of pentaglycine bridges. To investigate whether





glucose affected the growth of other staphylococci. In addition to *S. aureus*, the growth of *S. epidermidis* and *S. haemolyticus* in the presence of 25 mM glucose was examined. Addition of glucose significantly reduced the growth of *S. epidermidis* and *S. haemolyticus* (Figures 6A,B). Furthermore, *S. epidermidis* and *S. haemolyticus* were highly resistant to lysostaphin in the LB medium with 25 mM glucose (Figure 6C). However, growth of *E. faecalis* and Gram-negative bacteria, such as *E. coli* and *P. aeruginosa*, was unaffected by glucose (Figures 6D–F). These data indicate that the unique cell-wall structure of staphylococci results in their reduced growth in the presence of glucose.

## DISCUSSION

High-glucose-induced cytotoxicity has been observed in various eukaryotic cells, such as endothelial cells and fibroblasts (Gao et al., 2015; Sedlic et al., 2017; Buranasin et al., 2018). In this study, a high concentration of glucose was found to significantly reduce growth and survival of planktonic *S. aureus*. A previous study reported that growth of *E. coli* in unbuffered LB medium was markedly decreased by the addition of 11.11 mM glucose (Kwiatkowska et al., 2008). The pH of the growth medium dropped to 5.0 in the presence of 25 mM glucose in this study

and our previous study (Luo et al., 2019). These data suggested that acidic metabolites might contribute to the reduced growth and survival of *S. aureus* by glucose. The lactic acid content of the culture medium during aggregation of *S. aureus* induced by glucose was less than 15 mM (Luo et al., 2019), therefore 20 mM lactic acid or acetic acid was added into the overnight cultures of *S. aureus*, resulting in the pH of the cultures decreasing to 5.0. Survival of *S. aureus* during stationary phase was unaffected by these acidic conditions, indicating that the reduced growth and survival of *S. aureus* under high glucose conditions is not due to the presence of acidic metabolites. Contrary to these data, murine footpad infection models revealed that hyperglycemia favors bacterial survival (Tuchscher et al., 2018). Therefore, other internal and external factors, such as strain lineage and serum components, also affect the growth and survival of strains of *S. aureus* (Croes et al., 2009; Yin et al., 2017).

*Staphylococcus aureus* forms robust biofilms in growth medium supplemented with glucose, and the increased biofilm formation induced by glucose has a threshold response at clinically important concentrations (Waldrop et al., 2014). During biofilm formation, a population of cells release extracellular matrix, such as extracellular proteins and eDNA, to form multicellular clusters. The eDNA component within biofilms is released into the supernatant when the biofilms are



suspended in a buffer with a higher pH (Dengler et al., 2015); this enables eDNA within biofilms to be experimentally separated from gDNA. Herein, glucose (>3 mM) significantly reduced eDNA levels within biofilms, and the amount of glucose was less than that reported in a previous study (Sugimoto et al., 2018). A previous study demonstrated that 22.22 mM glucose could repress nuclease transcription and prevent nuclease accumulation (Kiedrowski et al., 2011). In our study, nuclease activity of biofilm supernatants was significantly reduced in the presence of 15 mM glucose compared with LB medium, and this activity could be restored almost to levels recorded in LB medium by adjusting the pH of the culture solution to 7.5. Therefore, eDNA does not contribute to the increase in biofilm formation induced by glucose; other factors are involved in this process.

In addition to *S. aureus*, growth of strains of *S. epidermidis* and *S. haemolyticus* was also markedly decreased by glucose, while growth of *E. faecalis*, *E. coli*, and *P. aeruginosa* was unaffected by glucose. Furthermore, like *S. aureus*, strains of *S. epidermidis* and *S. haemolyticus* were highly resistant to lysostaphin under high glucose conditions. Pentaglycine bridges, which are cleaved by lysostaphin, occur in the cell envelope of staphylococci but not in other bacterial species. Therefore, the unique cell-wall structure of staphylococci contributes to the reduced growth and survival of *S. aureus* in high glucose conditions.

The thickness of the cell wall of *S. aureus* was significantly reduced under high glucose conditions. Staphylococci possess highly cross-linked peptidoglycan due to the presence of the bridges containing five glycine molecules; these pentaglycine bridges are synthesized by the *femABX* family (Rohrer et al., 1999; Monteiro et al., 2019). Deletion of *femAB* genes reduces cross-linking between peptidoglycan chains, and results in bacterial strain being highly lysostaphin resistant (Stranden et al., 1997). Cells from the medium supplemented with glucose were highly resistant to lysostaphin. In addition, mRNA expression of genes of the *femABX* family in *S. aureus* Newman was significantly reduced by glucose compared with expression levels in LB medium. Therefore, culture of *S. aureus* under high glucose conditions leads to decreased pentaglycine expression in the bacteria and subsequent lysostaphin resistance.

Lysostaphin-resistant strains of *S. aureus* exhibit a reduced rate of exponential growth compared to lysostaphin-sensitive strains (Kusuma et al., 2007). Furthermore, cells of *S. aureus* do not survive without pentaglycine bridges, appearing as pseudomulticellular forms that eventually lyse due to extensive membrane rupturing (Monteiro et al., 2019). Our previous study reported that under high glucose conditions, cells of *S. aureus* formed multicellular arrangements and sank to the bottom of the culture vessel (Luo et al., 2019). Therefore, the reduced growth and survival of strains of *S. aureus* in high glucose is due to decreased expression of pentaglycine.

## REFERENCES

Bayer, A. S., Schneider, T., and Sahl, H. G. (2013). Mechanisms of daptomycin resistance in *Staphylococcus aureus*: role of the cell membrane and cell wall. *Ann. N. Y. Acad. Sci.* 1277, 139–158. doi: 10.1111/j.1749-6632.2012.06819.x

Lysostaphin shows rapid bactericidal activity against methicillin-susceptible and -resistant strains of *S. aureus*, with minimum inhibitory concentrations (MICs) ranging from 0.03 to 2 µg/mL, as determined using an agar dilution assay (Yang et al., 2007). Recent studies have reported that lysostaphin combined with other agents, such as LL-37 peptide, liposomal vancomycin, and nisin, are effective against *S. aureus* infection (Ceotto-Vigoder et al., 2016; Hajiahmadi et al., 2019; Sadeghi et al., 2019). However, the MIC values of lysostaphin are greatly increased by serial subculture (Gutierrez et al., 2020). Moreover, high levels of glucose and rich medium also lead to lysostaphin resistance (Wu et al., 2019). Therefore, utilization of lysostaphin to treat *S. aureus* infections should consider the factors affecting lysostaphin sensitivity.

## DATA AVAILABILITY STATEMENT

The raw data supporting the conclusions of this article will be made available by the authors, without undue reservation, to any qualified researcher.

## AUTHOR CONTRIBUTIONS

ZL, YuW, and YoW designed the study and analyzed the results. ZL, SY, TC, and PS conducted the experiments. ZL and YuW wrote the manuscript. SY, TC, PS, and YoW reviewed the manuscript. All authors contributed to the article and approved the submitted version.

## FUNDING

This study was supported by the New Xiangya Talent Project of the Third Xiangya Hospital of Central South University (grant no. JY201713), the Natural Science Foundation of Hunan Province (grant no. 2019JJ50925), and the National Natural Science Foundation of China (grant no. 81501375). The funding bodies had no role in the design of the study, nor in the collection, analysis, and interpretation of data, nor in the writing of the manuscript.

## SUPPLEMENTARY MATERIAL

The Supplementary Material for this article can be found online at: <https://www.frontiersin.org/articles/10.3389/fmicb.2020.537290/full#supplementary-material>

Beltrame, C. O., Cortes, M. F., Bandeira, P. T., and Figueiredo, A. M. (2015). Optimization of the RNeasy Mini Kit to obtain high-quality total RNA from sessile cells of *Staphylococcus aureus*. *Braz. J. Med. Biol. Res.* 48, 1071–1076. doi: 10.1590/1414-431X20154734

- Bera, A., Biswas, R., Herbert, S., Kulauzovic, E., Weidenmaier, C., Peschel, A., et al. (2007). Influence of wall teichoic acid on lysozyme resistance in *Staphylococcus aureus*. *J. Bacteriol.* 189, 280–283. doi: 10.1128/JB.01221-06
- Bertsche, U., Weidenmaier, C., Kuehner, D., Yang, S. J., Baur, S., Wanner, S., et al. (2011). Correlation of daptomycin resistance in a clinical *Staphylococcus aureus* strain with increased cell wall teichoic acid production and D-alanylation. *Antimicrob. Agents Chemother.* 55, 3922–3928. doi: 10.1128/AAC.01226-10
- Boles, B. R., and Horswill, A. R. (2008). Agr-mediated dispersal of *Staphylococcus aureus* biofilms. *PLoS Pathog.* 4:e1000052. doi: 10.1371/journal.ppat.1000052
- Brahma, U., Sharma, P., Murthy, S., Sharma, S., Chakraborty, S., Appalaraju, S. N., et al. (2019). Decreased expression of femXAB genes and fnbp mediated biofilm pathways in OS-MRSA clinical isolates. *Sci. Rep.* 9:16028. doi: 10.1038/s41598-019-52557-z
- Buranasin, P., Mizutani, K., Iwasaki, K., Na Mahasarakham, C. P., Kido, D., Takeda K., et al. (2018). High glucose-induced oxidative stress impairs proliferation and migration of human gingival fibroblasts. *PLoS One* 13:e0201855. doi: 10.1371/journal.pone.0201855
- Ceotto-Vigoder, H., Marques, S. L., Santos, I. N., Alves, M. D., Barrias, E. S., Potter, A., et al. (2016). Nisin and lysostaphin activity against preformed biofilm of *Staphylococcus aureus* involved in bovine mastitis. *J. Appl. Microbiol.* 121, 101–114. doi: 10.1111/jam.13136
- Chen, C., Fan, H., Huang, Y., Peng, F., Fan, H., Yuan, S., et al. (2014). Recombinant lysostaphin protects mice from methicillin-resistant *Staphylococcus aureus* pneumonia. *Biomed. Res. Int.* 2014:602185. doi: 10.1155/2014/602185
- Croes, S., Deurenberg, R. H., Boumans, M. L., Beisser, P. S., Neef, C., and Stobberingh, E. E. (2009). *Staphylococcus aureus* biofilm formation at the physiologic glucose concentration depends on the *S. aureus* lineage. *BMC Microbiol.* 9:229. doi: 10.1186/1471-2180-9-229
- Dengler, V., Foulston, L., DeFrancesco, A. S., and Losick, R. (2015). An Electrostatic Net Model for the Role of Extracellular DNA in Biofilm Formation by *Staphylococcus aureus*. *J. Bacteriol.* 197, 3779–3787. doi: 10.1128/JB.00726-15
- Francius, G., Domenech, O., Mingeot-Leclercq, M. P., and Dufrene, Y. F. (2008). Direct observation of *Staphylococcus aureus* cell wall digestion by lysostaphin. *J. Bacteriol.* 190, 7904–7909. doi: 10.1128/JB.01116-08
- Gao, Y., Zhang, J., Li, G., Xu, H., Yi, Y., Wu, Q., et al. (2015). Protection of vascular endothelial cells from high glucose-induced cytotoxicity by emodin. *Biochem. Pharmacol.* 94, 39–45. doi: 10.1016/j.bcp.2015.01.006
- Grundling, A., Missiakas, D. M., and Schneewind, O. (2006). *Staphylococcus aureus* mutants with increased lysostaphin resistance. *J. Bacteriol.* 188, 6286–6297. doi: 10.1128/JB.00457-06
- Grundling, A., and Schneewind, O. (2006). Cross-linked peptidoglycan mediates lysostaphin binding to the cell wall envelope of *Staphylococcus aureus*. *J. Bacteriol.* 188, 2463–2472. doi: 10.1128/JB.188.7.2463-2472.2006
- Gutierrez, D., Garrido, V., Fernandez, L., Portilla, S., Rodriguez, A., Grillo, M. J., et al. (2020). Phage Lytic Protein LysRODI Prevents Staphylococcal Mastitis in Mice. *Front. Microbiol.* 11:7. doi: 10.3389/fmicb.2020.00007
- Hajiahmadi, F., Alikhani, M. Y., Shariatfar, H., Arabestani, M. R., and Ahmadvand, D. (2019). The bactericidal effect of lysostaphin coupled with liposomal vancomycin as a dual combating system applied directly on methicillin-resistant *Staphylococcus aureus* infected skin wounds in mice. *Int. J. Nanomed.* 14, 5943–5955. doi: 10.2147/IJN.S214521
- Kiedrowski, M. R., Kavanaugh, J. S., Malone, C. L., Mootz, J. M., Voyich, J. M., Smeltzer, M. S., et al. (2011). Nuclease modulates biofilm formation in community-associated methicillin-resistant *Staphylococcus aureus*. *PLoS One* 6:e26714. doi: 10.1371/journal.pone.0026714
- Kusuma, C., Jadanova, A., Chanturiya, T., and Kokai-Kun, J. F. (2007). Lysostaphin-resistant variants of *Staphylococcus aureus* demonstrate reduced fitness in vitro and in vivo. *Antimicrob. Agents Chemother.* 51, 475–482. doi: 10.1128/AAC.00786-06
- Kwiatkowska, J., Matuszewska, E., Kuczynska-Wisnik, D., and Laskowska, E. (2008). Aggregation of *Escherichia coli* proteins during stationary phase depends on glucose and oxygen availability. *Res. Microbiol.* 159, 651–657. doi: 10.1016/j.resmic.2008.09.008
- Labischinski, H. (1992). Consequences of the interaction of beta-lactam antibiotics with penicillin binding proteins from sensitive and resistant *Staphylococcus aureus* strains. *Med. Microbiol. Immunol.* 181, 241–265. doi: 10.1007/bf00198846
- Liu, Y., Huang, H., Gao, R., and Liu, Y. (2020). Dynamic Phenotypes and Molecular Mechanisms to Understand the Pathogenesis of Diabetic Nephropathy in Two Widely Used Animal Models of Type 2 Diabetes Mellitus. *Front. Cell Dev. Biol.* 8:172. doi: 10.3389/fcell.2020.00172
- Luo, Z., Chen, M., Chen, T., She, P., and Wu, Y. (2019). Lactic Acid Produced by Glycolysis Contributed to *Staphylococcus aureus* Aggregation Induced by Glucose. *Curr. Microbiol.* 76, 607–612. doi: 10.1007/s00284-019-01666-z
- Merino, N., Toledo-Arana, A., Vergara-Irigaray, M., Valle, J., Solano, C., Calvo, E., et al. (2009). Protein A-mediated multicellular behavior in *Staphylococcus aureus*. *J. Bacteriol.* 191, 832–843. doi: 10.1128/JB.01222-08
- Monteiro, J. M., Covas, G., Rausch, D., Filipe, S. R., Schneider, T., Sahl, H. G., et al. (2019). The pentaglycine bridges of *Staphylococcus aureus* peptidoglycan are essential for cell integrity. *Sci. Rep.* 9:5010. doi: 10.1038/s41598-019-41461-1
- Oluola, O., Kong, L., Fein, M., and Weisman, L. E. (2007). Lysostaphin in treatment of neonatal *Staphylococcus aureus* infection. *Antimicrob. Agents Chemother.* 51, 2198–2200. doi: 10.1128/AAC.00506-06
- Prax, M., Mechler, L., Weidenmaier, C., and Bertram, R. (2016). Glucose Augments Killing Efficiency of Daptomycin Challenged *Staphylococcus aureus* Persisters. *PLoS One* 11:e0150907. doi: 10.1371/journal.pone.0150907
- Richardson, A. R., Libby, S. J., and Fang, F. C. (2008). A nitric oxide-inducible lactate dehydrogenase enables *Staphylococcus aureus* to resist innate immunity. *Science* 319, 1672–1676. doi: 10.1126/science.1155207
- Rohrer, S., Ehlert, K., Tschierske, M., Labischinski, H., and Berger-Bachi, B. (1999). The essential *Staphylococcus aureus* gene fnhB is involved in the first step of peptidoglycan pentaglycine interpeptide formation. *Proc. Natl. Acad. Sci. U S A* 96, 9351–9356. doi: 10.1073/pnas.96.16.9351
- Sadeghi, S., Bakhshandeh, H., Ahangari Cohan, R., Peirovi, A., Ehsani, P., and Norouzi, D. (2019). Synergistic Anti-Staphylococcal Activity Of Niosomal Recombinant Lysostaphin-LL-37. *Int. J. Nanomed.* 14, 9777–9792. doi: 10.2147/IJN.S230269
- Sedlic, F., Muravyeva, M. Y., Sepac, A., Sedlic, M., Williams, A. M., Yang, M., et al. (2017). Targeted Modification of Mitochondrial ROS Production Converts High Glucose-Induced Cytotoxicity to Cytoprotection: Effects on Anesthetic Preconditioning. *J. Cell Physiol.* 232, 216–224. doi: 10.1002/jcp.25413
- Stranden, A. M., Ehlert, K., Labischinski, H., and Berger-Bachi, B. (1997). Cell wall monoglycine cross-bridges and methicillin hypersusceptibility in a femAB null mutant of methicillin-resistant *Staphylococcus aureus*. *J. Bacteriol.* 179, 9–16. doi: 10.1128/jb.179.1.9-16.1997
- Sugimoto, S., Sato, F., Miyakawa, R., Chiba, A., Onodera, S., Hori, S., et al. (2018). Broad impact of extracellular DNA on biofilm formation by clinically isolated Methicillin-resistant and -sensitive strains of *Staphylococcus aureus*. *Sci. Rep.* 8:2254. doi: 10.1038/s41598-018-20485-z
- Tuchscher, L., Korpos, E., van de Vyver, H., Findeisen, C., Kherkheulidze, S., Siegmund, A., et al. (2018). *Staphylococcus aureus* requires less virulence to establish an infection in diabetic hosts. *Int. J. Med. Microbiol.* 308, 761–769. doi: 10.1016/j.ijmm.2018.05.004
- Vitko, N. P., Grosser, M. R., Khatri, D., Lance, T. R., and Richardson, A. R. (2016). Expanded Glucose Import Capability Affords *Staphylococcus aureus* Optimized Glycolytic Flux during Infection. *mBio* 7:e00296-16. doi: 10.1128/mBio.00296-16
- Vitko, N. P., Spahich, N. A., and Richardson, A. R. (2015). Glycolytic dependency of high-level nitric oxide resistance and virulence in *Staphylococcus aureus*. *MBio* 6:e00045-15. doi: 10.1128/mBio.00045-15
- Waldrop, R., McLaren, A., Calara, F., and McLemore, R. (2014). Biofilm growth has a threshold response to glucose in vitro. *Clin. Orthop. Relat. Res.* 472, 3305–3310. doi: 10.1007/s11999-014-3538-5
- Wu, J. A., Kusuma, C., Mond, J. J., and Kokai-Kun, J. F. (2003). Lysostaphin disrupts *Staphylococcus aureus* and *Staphylococcus epidermidis* biofilms on artificial surfaces. *Antimicrob. Agents Chemother.* 47, 3407–3414. doi: 10.1128/aac.47.11.3407-3414.2003
- Wu, X., Zha, J., Koffas, M. A. G., and Dordick, J. S. (2019). Reducing *Staphylococcus aureus* resistance to lysostaphin using CRISPR-dCas9. *Biotechnol. Bioeng.* 116, 3149–3159. doi: 10.1002/bit.27143
- Yamada, S., and Matsumoto, A. (1986). Effect of mannitol and glucose on the distribution and trypsin susceptibility of protein A of *Staphylococcus aureus*. *Microbiol. Immunol.* 30, 993–1002. doi: 10.1111/j.1348-0421.1986.tb03029.x

- Yang, X. Y., Li, C. R., Lou, R. H., Wang, Y. M., Zhang, W. X., Chen, H. Z., et al. (2007). In vitro activity of recombinant lysostaphin against *Staphylococcus aureus* isolates from hospitals in Beijing, China. *J. Med. Microbiol.* 56(Pt 1), 71–76. doi: 10.1099/jmm.0.46788-0
- Yi, Y., Shen, Y., Wu, Q., Rao, J., Guan, S., Rao, S., et al. (2018). Protective Effects of Oxymatrine on Vascular Endothelial Cells from High-Glucose-Induced Cytotoxicity by Inhibiting the Expression of A2B Receptor. *Cell Physiol. Biochem.* 45, 558–571. doi: 10.1159/000487033
- Yin, S., Jiang, B., Huang, G., Gong, Y., You, B., Yang, Z., et al. (2017). Burn Serum Increases *Staphylococcus aureus* Biofilm Formation via Oxidative Stress. *Front. Microbiol.* 8:1191. doi: 10.3389/fmicb.2017.01191
- You, Y., Xue, T., Cao, L., Zhao, L., Sun, H., and Sun, B. (2014). *Staphylococcus aureus* glucose-induced biofilm accessory proteins, GbaAB, influence biofilm formation in a PIA-dependent manner. *Int. J. Med. Microbiol.* 304, 603–612. doi: 10.1016/j.ijmm.2014.04.003

**Conflict of Interest:** The authors declare that the research was conducted in the absence of any commercial or financial relationships that could be construed as a potential conflict of interest.

Copyright © 2020 Luo, Yue, Chen, She, Wu and Wu. This is an open-access article distributed under the terms of the Creative Commons Attribution License (CC BY). The use, distribution or reproduction in other forums is permitted, provided the original author(s) and the copyright owner(s) are credited and that the original publication in this journal is cited, in accordance with accepted academic practice. No use, distribution or reproduction is permitted which does not comply with these terms.