



# Phenotyping Neuropsychiatric Symptoms Profiles of Alzheimer's Disease Using Cluster Analysis on EEG Power

Friedrich Liu<sup>1,2</sup>, Jong-Ling Fuh<sup>3,4</sup>, Chung-Kang Peng<sup>2</sup> and Albert C. Yang<sup>5,6,7\*</sup>

<sup>1</sup>Boston University Academy, Boston, MA, United States, <sup>2</sup>Center for Dynamical Biomarkers, Beth Israel Deaconess Medical Center/Harvard Medical School, Boston, MA, United States, <sup>3</sup>Division of General Neurology, Neurological Institute, Taipei Veterans General Hospital, Taipei, Taiwan, <sup>4</sup>Department of Medicine, National Yang Ming Chiao Tung University, Taipei, Taiwan, <sup>5</sup>Institute of Brain Science/Digital Medicine Center, National Yang Ming Chiao Tung University, Taipei, Taiwan, <sup>6</sup>Department of Psychiatry, Taipei Veterans General Hospital, Taipei, Taiwan, <sup>7</sup>Taoyuan Psychiatric Center, Taoyuan City, Taiwan

**Background:** There has been an increasing interest in studying electroencephalogram (EEG) as a biomarker of Alzheimer's disease but the association between EEG signals and patients' neuropsychiatric symptoms remains unclear. We studied EEG signals of patients with Alzheimer's disease to explore the associations between patients' neuropsychiatric symptoms and clusters of patients based on their EEG powers.

**Methods:** A total of 69 patients with mild Alzheimer's disease (the Clinical Dementia Rating = 1) were enrolled and their EEG signals from 19 channels/electrodes were recorded in three sessions for each patient. The EEG power was calculated by Fourier transform for the four frequency bands (beta: 13–40 Hz, alpha: 8–13 Hz, theta: 4–8 Hz, and delta: <4 Hz). We performed K-means cluster analysis to classify the 69 patients into two distinct groups by the log-transformed EEG powers (4 frequency bands × 19 channels) for the three EEG sessions. In each session, both clusters were compared with each other to assess the differences in their behavioral/psychological symptoms in terms of the Neuropsychiatric Inventory (NPI) score.

**Results:** While EEG band powers were highly consistent across all three sessions before clustering, EEG band powers were different between the two clusters in each session, especially for the delta waves. The delta band powers differed significantly between the two clusters in most channels across the three sessions. Patients' demographics and cognitive function were not different between both clusters. However, their behavioral/psychological symptoms were different between the two clusters classified based on EEG powers. A higher NPI score was associated with the clustering of higher EEG powers.

**Conclusion:** The present study suggests that EEG power correlates to behavioral and psychological symptoms among patients with mild Alzheimer's disease. The clustering approach of EEG signals may provide a novel and cost-effective method to differentiate the severity of neuropsychiatric symptoms and/or predict the prognosis for Alzheimer's patients.

**Keywords:** dementia, electroencephalogram (EEG), behavioral and psychological symptoms, cluster analysis, Fourier transform

## OPEN ACCESS

### Edited by:

Juan Manuel Gorriz,  
University of Granada, Spain

### Reviewed by:

Sou Nobukawa,  
Chiba Institute of Technology, Japan  
Renata Valle Pedroso,  
Federal University of São Carlos,  
Brazil

### \*Correspondence:

Albert C. Yang  
accyang@nycu.edu.tw

**Received:** 30 October 2020

**Accepted:** 24 March 2021

**Published:** 13 April 2021

### Citation:

Liu F, Fuh J-L, Peng C-K and Yang AC (2021) Phenotyping Neuropsychiatric Symptoms Profiles of Alzheimer's Disease Using Cluster Analysis on EEG Power. *Front. Aging Neurosci.* 13:623930. doi: 10.3389/fnagi.2021.623930

## INTRODUCTION

Alzheimer's disease is a type of neurodegenerative disorder which affects 5.8 million elderly people in the United States alone. It is the sixth leading cause of death in the general population of the United States and is also the leading cause of disability and morbidity amongst the elderly (Alzheimer's Association, 2020). As of 2019, the global percentage of people above the age of 60 years who are affected by Alzheimer's disease is estimated to be between 5% and 8% (World Health Organization, 2020).

Typically, dementia due to Alzheimer's disease is diagnosed by a set of criteria involving patients' cognitive function and neuropsychiatric history (McKhann et al., 2011). The assessment of Alzheimer's disease includes testing the patient's memory, verbal skills, problem solving skills, and mood through a series of questionnaires. Close acquaintances of the patient are also questioned about the patient's memory, cognitive ability, and recent behavior (Alzheimer's Association, 2020). However, this method of diagnosis may not capture the heterogeneous nature of the disease. Recently, researchers have harbored significant interests in developing an objective method of classifying Alzheimer's disease and assessing the severity of the condition based on biological markers (Bateman et al., 2012; Blennow and Zetterberg, 2018).

One of the compelling biomarkers that can assess brain functioning for Alzheimer's dementia is the electroencephalography (EEG). The EEG is a non-invasive, widely-available, and economical method that offers high temporal resolution, making it more attractive than functional magnetic resonance imaging (MRI) and positron-emission tomography (PET; Dauwels et al., 2010; Cassani et al., 2018; Smailovic and Jelic, 2019). Pathophysiologically, dementia of the Alzheimer type is caused by a build-up of beta-amyloid peptide in the brain, which in turn leads to synaptic dysfunction, impairing the vital cognitive functioning of the brain (Masters et al., 2015; Scheltens et al., 2016; Selkoe and Hardy, 2016). EEG scans directly measure neurological signaling while MRI and PET offer only hemodynamics and metabolic signals, respectively (Smailovic and Jelic, 2019).

Given that the behavioral and psychological symptoms vary to an extent among Alzheimer's patients even though if they have the same severity of dementia, understanding the variation should help initiate preventive measures, organize appropriate care, and facilitate applicable treatment plans for these patients. While previous studies had examined the difference in EEG signals of Alzheimer's patients vs. non-Alzheimer's patients recognizing alternation of EEG power, and/or reduction of temporal complexity and functional connectivity in Alzheimer's disease (Dauwels et al., 2010; Nobukawa et al., 2019, 2020; Smailovic and Jelic, 2019), this study aimed to explore the potential difference in EEG scans of heterogeneous Alzheimer's patients. Our hypothesis was that between patients with the same severity of disease, there would still be a difference in their neuropsychiatric symptoms with a corresponding difference in their EEG signals.

## MATERIALS AND METHODS

### Participants

This study group was composed of 69 patients (42 women vs. 27 men) with mild Alzheimer's disease, 61–90 years of age (mean  $\pm$  standard deviation, SD = 78.0  $\pm$  6.7). All of the research participants were enrolled from the Dementia Clinic at the Neurological Institute of the Taipei Veterans General Hospital in Taiwan. The diagnosis for Alzheimer's disease was based on the criteria of the National Institute of Neurological and Communicative Disorders and the Stroke/Alzheimer's Disease and Related Disorders Association (McKhann et al., 1984). In light of the study purpose to assess EEG signals among patients with similar severity of dementia, only patients characterized as having mild Alzheimer's dementia (i.e., Clinical Dementia Rating, CDR scale = 1; Morris, 1993) were included in this study.

The cognitive functioning of the patients was evaluated using the Mini-Mental State Examination (MMSE; Folstein et al., 1975), a verbal category fluency test, and the forward-and-backward digit span tasks subset of the Wechsler Adult Intelligence Scale. Their behavioral and psychological symptoms were evaluated using the Neuropsychiatric Inventory (NPI), a quantitative assessment of over 12 neuropsychiatric domains: delusions, hallucinations, dysphoria, anxiety, agitation/aggression, euphoria, disinhibition, irritability/lability, apathy, aberrant motor activity, appetite, and night-time behavior disturbances (Cummings et al., 1994). The study was approved by the Institutional Review Board of National Yang Ming University (IRB Approval Number: YM109075E).

### EEG Signal Processing

All patients received the digital EEG recording (Nicolet EEG, Natus Medical, Incorporated, San Carlos, CA, USA) in the examination room, and the details of the recording protocol has been previously reported (Yang et al., 2013). Each patient had three separate sessions of resting eye-closed EEG scan for 10–20 s. EEG signals from the 19 electrodes (Fp1, Fp2, F7, F3, Fz, F4, F8, T3, C3, Cz, C4, T4, T5, P3, Pz, P4, T6, O1, and O2) were recorded according to the standard 10-20 system with reference to linked earlobe electrodes at a sampling rate of 256 Hz. Initial filter settings were low-pass filter frequency of 70 Hz, high-pass filter of 0.05 Hz, notch filter of 60 Hz, and electrode impedances below 3 k $\Omega$ . A technician monitored the process and would alert the patient if signs of drowsiness/sleep appeared (Yang et al., 2013).

For the EEG scan from each electrode per session with eyes closed, a 10-s segment of artifact-free EEG signals was manually extracted after careful visual inspection (Yang et al., 2013). Each patient had three EEG segments of 10 s each from each electrode, and these EEG data were used for the subsequent analyses. The EEG signal processing and analysis in this study were all done on the Matrix Laboratory (MATLAB) software (MathWorks, Inc., Natick, MA, United States).

The original EEG data from each electrode per segment as a function of voltage over time were transformed using the Fourier transform to yield the Welch's periodogram of the power spectral

density vs. frequency. The EEG signals were classified by the four conventional frequency bands defined as beta (13–40 Hz), alpha (8–13 Hz), theta (4–8 Hz), and delta (<4 Hz). The absolute EEG power was calculated by integrating the power spectral density with respect to frequency for the corresponding frequency band. Each patient has 76 band powers since each of the 19 electrodes has four frequency bands. The EEG band powers were then log-transformed and a 69 (patients) by 76 (log-transformed band powers) result matrix was constructed for each of the three segments.

## Cluster Analysis

Cluster analysis was performed on each of the three result matrices of log-transformed band powers using *K*-means clustering on MATLAB to classify the 69 patients in each of the three segments into two distinct clusters, making six overall clusters. A cluster size of two was chosen for all three segments after silhouette analysis was performed. Across all three segments, the silhouette value for clusters of two (0.453, 0.422, and 0.406 respectively) were the utmost vs. clustering of any other size. Moreover, we performed the clustering 100 times and averaged them to yield the conclusions in order to improve the stability of the *K*-means results.

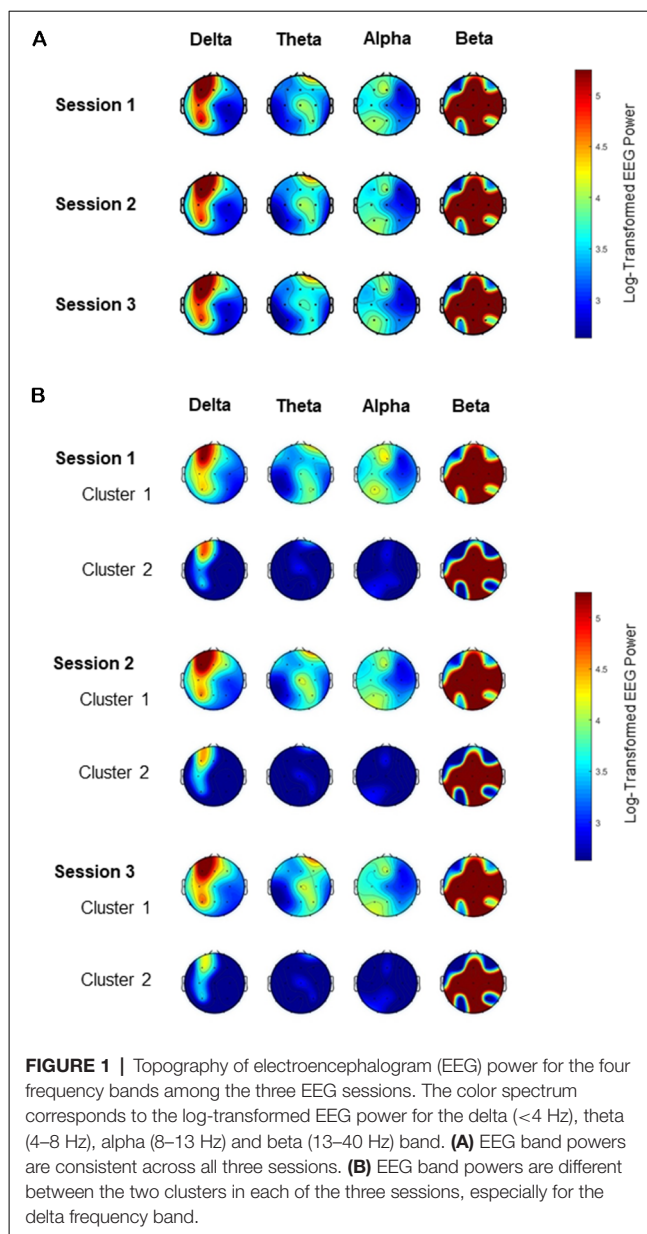
## Statistical Analysis

For each of the three EEG segments, both clusters generated by *K*-means method on their EEG powers were compared with each other to assess the differences in their demographics, cognitive functioning, and neuropsychiatric symptoms. The demographics of the patients included age, sex, education, and duration of illness. The cognitive functioning included MMSE, verbal fluency, digit forward span test, and digit backward span test. The NPI variables contained the 12 neuropsychiatric domains listed above with higher scores indicating worse conditions. Independent-sample *t*-tests were conducted to compare the continuous variables between both clusters whereas the chi-square tests were used to compare the categorical variables such as gender distribution. Two-sided *p*-values of less than 0.05 were considered statistically significant. IBM SPSS Statistics, version 25.0 (SPSS Inc., Chicago, Illinois, United States) was used for all of the statistical analyses.

## RESULTS

### Scalp EEG Power Features of Patients With Dementia

The absolute EEG power spectral density analysis was performed on the EEG data among the three segments of the 69 patients with mild Alzheimer's disease. Topographic plots show the EEG power features mapping the EEG band power for the 19 electrodes in a 2-dimensional circular view looking down from the top of the head (Figure 1). Figure 1A shows that the EEG power features for the four frequency bands were highly consistent across all three segments before clustering. For the delta frequency band, the EEG signals from left frontal electrodes (FP1) were strongest across all three segments. In contrast, for



the theta or alpha frequency band, the EEG powers were weak globally across all three segments.

### Cluster Analysis on EEG Powers

For each of the three EEG segments, cluster analysis was performed to classify the 69 patients into two distinct clusters based on their EEG frequency band powers. Clusters 1 and 2 contained 33 vs. 36, 33 vs. 36, and 34 vs. 35 patients for Segment 1, Segment 2, and Segment 3, respectively. Table 1 shows the similarities in clustering between different segments in terms of the Jaccard similarity index which measures the intersection over union of the clusters compared. Overall, the clustering patterns among the three segments were highly consistent as the Jaccard index ranged from 73.7% to 77.5%, significantly above the value of around 31% by random grouping. Figure 1B also reveals

**TABLE 1** | Comparisons of the clustering in terms of the Jaccard index (%) for the cluster analysis on EEG powers among the three electroencephalogram (EEG) sessions.

		Session 1		Session 2		Session 3	
		Cluster 1	Cluster 2	Cluster 1	Cluster 2	Cluster 1	Cluster 2
Session 1	Cluster1	-	0				
	Cluster2	0	-				
Session 2	Cluster1	73.7	7.8	-	0		
	Cluster2	7.8	75.6	0	-		
Session 3	Cluster1	76.3	7.7	76.3	7.7	-	0
	Cluster2	6.3	77.5	6.3	77.5	0	-

the consistency of clustering on EEG band powers across the three segments.

In each of the three segments, the two clusters generated by *K*-means clustering methods were distinctive with each other regarding their EEG power, particularly for the delta frequency band (**Figure 1B**). For every segment, the delta band power, theta band power, and alpha band power of one cluster (Cluster 1) appeared stronger than that for the corresponding electrode of the other cluster (Cluster 2). **Table 2** shows that the delta band powers differed significantly between the two clusters in most of the 19 scalp electrodes across the three sessions. Although the strongest signals came from the left frontal area (Fp1), the EEG delta band power for Fp1 of Cluster 1 was still greater than that of Cluster 2.

## Comparisons of Demographic and Clinical Variables Between Clusters on EEG Powers

Following cluster analysis on EEG powers, the two clusters generated by *K*-means method were compared with each other regarding demographic and clinical variables. In general, for each of the EEG segments, patients' demographics and cognitive functions were not different between both clusters except for

Segment 1, which had more females in Cluster 1 than in Cluster 2 (75.8% vs. 47.2%;  $P = 0.015$ ).

Regarding patients' neuropsychiatric symptoms, **Table 3** shows a clear trend that in all three segments, patients of Cluster 1 exhibited higher NPI scores, total score or subdomain score, than Cluster 2, indicating that the clustering of higher EEG powers may be associated with severer neuropsychiatric symptoms. For Segment 1, the total NPI score for the first cluster was significantly higher than the second cluster ( $19.3 \pm 18.6$  vs.  $10.0 \pm 9.7$ ;  $P = 0.014$ ). For Segment 2, the total NPI score for the first cluster was  $17.2 \pm 18.9$  while the second cluster had a score of  $11.9 \pm 10.6$ . And for Segment 3, the total NPI score for Cluster 1 was  $17.7 \pm 18.7$  while Cluster 2 was  $11.3 \pm 10.3$  ( $P = 0.086$ , **Table 3**).

We learned that there were no statistically significant differences in NPI score between clusters after applying the false discovery rate function in MATLAB to correct the *P*-value. However, the purpose of the experiment was to explore the patterns between clusters. Moreover, there is still a noteworthy trend in the differences of the NPI score between clusters, which can have clinical significances.

Specifically, for Segment 1, patients in Cluster 1 experienced a significantly higher level of delusion, hallucination, anxiety,

**TABLE 2** | Distinction in log-transformed EEG delta band power between both clusters across 19 EEG channels among the three sessions.

EEG channels	Session 1			Session 2			Session 3		
	C1	C2	<i>P</i> -value	C1	C2	<i>P</i> -value	C1	C2	<i>P</i> -value
Fp1	5.31	4.67	0.074	5.69	4.48	0.003	5.63	4.19	<0.001*
Fp2	3.52	2.24	<0.001*	3.93	2.29	<0.001*	3.93	2.24	<0.001*
F7	3.48	2.26	<0.001*	3.43	2.24	<0.001*	3.52	2.15	<0.001*
F3	3.15	2.59	0.001*	3.33	2.51	<0.001*	3.28	2.47	<0.001*
Fz	5.28	4.63	0.086	5.73	4.45	0.002*	5.63	4.10	<0.001*
F4	3.60	2.30	<0.001*	3.98	2.38	<0.001*	3.96	2.38	<0.001*
F8	3.54	2.30	<0.001*	3.47	2.30	<0.001*	3.56	2.18	<0.001*
T3	3.09	2.57	0.001*	3.21	2.48	<0.001*	3.22	2.49	<0.001*
C3	4.32	3.33	<0.001*	4.38	3.59	0.008	4.45	3.48	0.003
Cz	3.12	1.59	<0.001*	3.09	1.73	<0.001*	3.15	1.74	<0.001*
C4	3.24	1.97	<0.001*	3.06	1.97	<0.001*	3.12	1.90	<0.001*
T4	2.79	2.19	<0.001*	2.95	2.10	<0.001*	3.00	2.06	<0.001*
T5	4.33	3.48	0.010	4.56	3.37	<0.001*	4.62	3.46	<0.001*
P3	3.14	1.62	<0.001*	3.16	1.77	<0.001*	3.16	1.83	<0.001*
Pz	3.29	1.98	<0.001*	3.12	2.01	<0.001*	3.26	1.89	<0.001*
P4	2.98	2.28	<0.001*	3.02	2.07	<0.001*	2.95	2.13	<0.001*
T6	4.26	3.43	0.002*	4.55	3.29	<0.001*	4.55	3.37	<0.001*
O1	3.57	2.03	<0.001*	3.59	2.16	<0.001*	3.58	2.19	<0.001*
O2	3.82	2.46	<0.001*	3.62	2.46	<0.001*	3.70	2.37	<0.001*

\*Significance level is corrected for multiple comparison using Bonferroni method at  $P < 0.0026$  (0.05/19 channels).

**TABLE 3** | Comparison of cognition function and behavioral/psychiatric symptoms between both clusters of patients classified by their EEG powers for the three EEG sessions.

	Session 1			Session 2			Session 3		
	Cluster 1	Cluster 2	P-value	Cluster 1	Cluster 2	P-value	Cluster 1	Cluster 2	P-value
<b>Demographic</b>									
Age (years)	76.9 ± 6.6	79.1 ± 6.8	0.176	76.6 ± 5.9	79.2 ± 7.3	0.105	76.4 ± 6.4	79.5 ± 6.8	0.058
Sex, male (%)	24.2	52.8	<b>0.015</b>	30.3	47.2	0.150	29.4	48.6	0.103
Education (years)	7.2 ± 5.3	8.6 ± 4.8	0.260	7.6 ± 4.7	8.2 ± 5.4	0.645	8.2 ± 4.7	7.6 ± 5.4	0.655
Duration of illness (years)	2.6 ± 2.6	2.1 ± 1.8	0.354	2.2 ± 2.5	2.5 ± 1.9	0.606	2.4 ± 2.4	2.2 ± 2.0	0.686
<b>Cognitive functioning</b>									
MMSE	17.9 ± 4.5	19.9 ± 5.7	0.104	18.3 ± 4.7	19.6 ± 5.7	0.278	17.9 ± 5.3	19.9 ± 4.9	0.095
Verbal fluency	8.8 ± 3.3	9.6 ± 3.4	0.370	8.5 ± 3.3	9.9 ± 3.3	0.087	8.5 ± 3.5	9.9 ± 3.0	0.074
Digit forward	8.4 ± 2.4	9.0 ± 2.5	0.359	8.4 ± 2.1	8.9 ± 2.7	0.336	8.4 ± 2.3	8.9 ± 2.6	0.341
Digit backward	3.6 ± 2.2	4.1 ± 2.0	0.374	3.6 ± 2.1	4.1 ± 2.1	0.374	3.7 ± 2.3	4.1 ± 2.0	0.440
<b>Neuropsychiatric Inventory</b>									
Total score	19.3 ± 18.6	10.0 ± 9.7	<b>0.014</b>	17.2 ± 18.9	11.9 ± 10.6	0.156	17.7 ± 18.7	11.3 ± 10.3	0.086
Delusion	1.4 ± 2.4	0.5 ± 1.0	<b>0.040</b>	1.1 ± 2.0	0.8 ± 1.7	0.573	1.0 ± 2.0	0.9 ± 1.7	0.851
Hallucination	0.8 ± 1.8	0.1 ± 0.3	<b>0.040</b>	0.7 ± 1.8	0.2 ± 0.4	0.089	0.6 ± 1.8	0.2 ± 0.5	0.192
Agitation/aggression	1.6 ± 2.3	0.8 ± 1.6	0.076	1.6 ± 2.3	0.8 ± 1.6	0.125	1.8 ± 2.5	0.6 ± 1.0	<b>0.013</b>
Dysphoria/depression	2.1 ± 2.7	1.1 ± 2.2	0.110	2.2 ± 3.0	1.0 ± 1.7	0.065	2.0 ± 3.0	1.1 ± 1.7	0.128
Anxiety	2.0 ± 3.0	0.5 ± 1.1	<b>0.011</b>	1.3 ± 2.5	1.1 ± 2.2	0.735	1.4 ± 2.5	1.0 ± 2.2	0.531
Euphoria	0.3 ± 1.0	0.1 ± 0.3	0.170	0.3 ± 1.0	0.1 ± 0.3	0.170	0.3 ± 1.0	0.1 ± 0.3	0.311
Apathy	2.0 ± 3.1	1.4 ± 2.2	0.351	2.2 ± 3.2	1.2 ± 2.1	0.118	2.1 ± 3.1	1.2 ± 2.2	0.159
Disinhibition	0.9 ± 2.1	0.8 ± 1.9	0.779	0.8 ± 2.0	0.9 ± 2.0	0.932	1.1 ± 2.3	0.7 ± 1.6	0.364
Irritability	1.9 ± 3.4	1.0 ± 2.2	0.191	2.1 ± 3.4	0.9 ± 2.0	0.085	2.3 ± 3.5	0.6 ± 1.6	<b>0.013</b>
Aberrant motor behavior	0.9 ± 1.9	1.2 ± 2.3	0.535	0.7 ± 1.4	1.3 ± 2.5	0.222	0.6 ± 1.3	1.5 ± 2.6	0.094
Sleep change	2.5 ± 3.4	1.1 ± 1.5	<b>0.034</b>	2.1 ± 3.3	1.5 ± 1.8	0.360	2.3 ± 3.4	1.3 ± 1.6	0.101
Appetite change	2.8 ± 4.1	1.4 ± 2.5	0.100	2.1 ± 3.6	2.0 ± 3.3	0.910	2.1 ± 3.6	2.1 ± 3.2	0.974

MMSE, Mini-Mental State Examination. P-values of <0.05 are considered statistically significant and shown in bold.

and sleep change than patients in Cluster 2. For Segment 3, patients in Cluster 1 experienced a significantly higher level of agitation/aggression and irritability than patients in Cluster 2.

## DISCUSSION

In light of the goal to develop an objective method of classifying Alzheimer's disease and assessing the severity of the neuropsychiatric conditions using EEG markers, we performed cluster analysis to categorize the Alzheimer's patients into two groups based on their EEG band powers from 19 scalp electrodes. We found a clear linkage between the clustering on EEG powers and differences in the behavioral and psychological symptoms that a higher NPI score was associated with the clustering of higher EEG band powers, supporting the hypothesis that the discrepancy in neuropsychiatric symptoms of patients with the same severity of Alzheimer's dementia would correspond to a difference in their EEG signals.

Although previous studies repeatedly demonstrated that patients with Alzheimer's disease show an increase in delta/theta band power, a decline in alpha/beta band power, reduced complexity and impaired synchrony in EEG signals compared to non-Alzheimer individuals (Dauwels et al., 2010; Nobukawa et al., 2019, 2020; Smailovic and Jelic, 2019), there have been limited data on assessing the EEG signals associated with neuropsychiatric conditions for Alzheimer's patients with the same severity of dementia. While neuropsychiatric symptoms generally increase as the stage of dementia progresses, many symptoms still develop in the early stage of Alzheimer's disease (Panza et al., 2010; Lyketsos et al., 2011; Hashimoto et al., 2015).

In general, our findings verified that Alzheimer's patients may be heterogeneous regarding their behavioral and psychological symptoms even though they have the same severity of dementia. The most common neuropsychiatric disorders in patients with mild stages of dementia include depression, apathy, anxiety and irritability. Patients in cluster one of all three sessions had higher NPI score for these conditions than patients in the second cluster. Furthermore, the average NPI score of the patients in the first cluster were all <14 whereas the average of the NPI score for patients in the second cluster were >14. Patients with NPI scores at or <14 may be associated with a better outcome of dementia when they are faced with neuroleptic discontinuation, which had already been demonstrated in a randomized, placebo controlled study (Ballard et al., 2004).

One possible physiological mechanism underlying these findings is that dementia can lead to slowing EEG waves. The slowing EEG may in turn signal the worsening ability of coordination between the various brain regions. Further studies should be conducted to study the underlying mechanism. Moreover, future investigations could also be performed to examine the relationship between temporal complexity measures and functional connectivity.

Our finding of the association of neuropsychiatric symptoms with the clustering on patients' EEG band powers suggests that the clustering approach on EEG signals may be a reliable and effective biomarker to characterize neuropsychiatric conditions and/or prognosis for Alzheimer's patients with similar cognitive functions. Specifically, such a cost-effective approach may identify patients with increased odds of delusion, hallucination, anxiety, sleep change, irritability, and agitation/aggression,

which should in turn inform the prognosis, organize preventive measures and appropriate care, and facilitate applicable treatment plans for these patients (Lyketsos et al., 2011).

Taking the clustering approach on absolute EEG band powers provide several advantages. First, it is safe, convenient, and cost-effective. Second, the results of the clustering seemed stable and consistent that were displayed in our study. Moreover, as expected, the clustering was not associated with the demographics or cognitive functioning of Alzheimer's patients with the same severity of disease. Third, without predetermined constraints, EEG signals for the four frequency bands from all 19 scalp electrodes, instead of information from only single band or local channels, were considered for the cluster analysis. Nevertheless, we found that the alpha band power, theta band power, and especially delta band power were grossly different between the two clusters in almost all channels and the clustering of higher EEG band powers corresponded to the group of patients with more severe neuropsychiatric conditions. Although we did not find prior research using the same approach that could corroborate our findings, previous studies reported that the changes of EEG signals develop gradually and the increase in EEG delta band power typically occurs in later stages across the Alzheimer's disease continuum (Coben et al., 1985; Soininen et al., 1991; Smailovic and Jelic, 2019).

Even though our findings shed light on the development of a novel model for phenotyping neuropsychiatric symptoms profiles of Alzheimer's disease, there are still a few limitations to be noted. First, the major limitation is the relatively small number of participants which leads to insufficient statistical power to demonstrate the statistically significant differences in NPI scores between the two clusters for every EEG session. However, the trends showing that a higher NPI is associated with the clustering of higher EEG powers were consistent among different sessions. Second, this is a cross-sectional study. Future large-scale prospective studies are warranted to investigate the long-term clinical outcomes of Alzheimer's patients and to corroborate our findings.

In summary, the neuropsychiatric symptoms were different between the two groups of patients with the same severity of Alzheimer's dementia categorized by cluster analysis based on EEG powers. A higher NPI score was associated with the clustering of higher EEG powers, particularly in delta frequency

band. The results of the study suggested that EEG band powers correlate to behavioral/psychological symptoms among patients with Alzheimer's disease. The clustering approach of EEG signals may provide a novel and cost-effective method to differentiate the severity of neuropsychiatric symptoms and/or predict the prognosis for Alzheimer's patients.

## DATA AVAILABILITY STATEMENT

The raw data supporting the conclusions of this article will be made available by the authors, without undue reservation.

## ETHICS STATEMENT

The studies involving human participants were reviewed and approved by National Yang-Ming University. Written informed consent for participation was not required for this study in accordance with the national legislation and the institutional requirements.

## AUTHOR CONTRIBUTIONS

AY and FL designed the study. J-LF and AY collected the data. FL conducted all analyses for the study. FL, J-LF, C-KP, and AY wrote the manuscript. All authors contributed to the article and approved the submitted version.

## FUNDING

This work was supported by grants from the Ministry of Science and Technology of Taiwan (grant number 109-2628-B-010-011, 109-2321-B-010-006, and 109-2634-F-075-001 to AY). FL was supported by the Center for Dynamical Biomarkers at Beth Israel Deaconess Medical Center and Harvard Medical School, Boston, MA, USA. AY was also supported by Mt. Jade Young Scholarship Award from Ministry of Education, Taiwan, as well as Brain Research Center, National Yang Ming Chiao Tung University and the Ministry of Education (Aim for the Top University Plan), Taipei, Taiwan. J-LF was supported by the Ministry of Science and Technology of Taiwan (109-2314-B-075-052-MY2) and Taipei Veterans General Hospital (V109C-061 and VGHUST109-V1-5-1).

## REFERENCES

- Alzheimer's Association (2020). 2020 Alzheimer's disease facts and figures. *Alzheimers Dement.* 16, 391–460. doi: 10.1002/alz.12068
- Ballard, C. G., Thomas, A., Fossey, J., Lee, L., Jacoby, R., Lana, M. M., et al. (2004). A 3-month, randomized, placebo-controlled, neuroleptic discontinuation study in 100 people with dementia: the neuropsychiatric inventory median cutoff is a predictor of clinical outcome. *J. Clin. Psychiatry* 65, 114–119. doi: 10.4088/jcp.v65n0120
- Bateman, R. J., Xiong, C., Benzinger, T. L. S., Fagan, A. M., Goate, A., Fox, N. C., et al. (2012). Clinical and biomarker changes in dominantly inherited Alzheimer's disease. *N. Engl. J. Med.* 367, 795–804. doi: 10.1056/NEJMoa1202753
- Blennow, K., and Zetterberg, H. (2018). Biomarkers for Alzheimer's disease: current status and prospects for the future. *J. Intern. Med.* 284, 643–663. doi: 10.1111/joim.12816
- Cassani, R., Estarellas, M., San-Martin, R., Fraga, F. J., and Falk, T. H. (2018). Systematic review on resting-state EEG for Alzheimer's disease diagnosis and progression assessment. *Dis. Markers* 2018, 1–26. doi: 10.1155/2018/5174815
- Coben, L. A., Danziger, W., and Storandt, M. (1985). A longitudinal EEG study of mild senile dementia of Alzheimer type: changes at 1 year and at 2.5 years. *Electroencephalogr. Clin. Neurophysiol.* 61, 101–112. doi: 10.1016/0013-4694(85)91048-x
- Cummings, J. L., Mega, M., Gray, K., Rosenberg-Thompson, S., Carusi, D. A., and Gornbein, J. (1994). The neuropsychiatric inventory: comprehensive assessment of psychopathology in dementia. *Neurology* 44, 2308–2314. doi: 10.1212/wnl.44.12.2308

- Dauwels, J., Vialatte, F., and Cichocki, A. (2010). Diagnosis of Alzheimer's disease from EEG signals: where are we standing? *Curr. Alzheimer Res.* 7, 487–505. doi: 10.2174/156720510792231720
- Folstein, M. F., Folstein, S. E., and McHugh, P. R. (1975). "Mini-mental state". A practical method for grading the cognitive state of patients for the clinician. *J. Psychiatr. Res.* 12, 189–198. doi: 10.1016/0022-3956(75)90026-6
- Hashimoto, M., Yatabe, Y., Ishikawa, T., Fukuhara, R., Kaneda, K., Honda, K., et al. (2015). Relationship between dementia severity and behavioral and psychological symptoms of dementia in dementia with lewy bodies and Alzheimer's disease patients. *Dement. Geriatr. Cogn. Disord. Extra* 5, 244–252. doi: 10.1159/000381800
- Lyketsos, C. G., Carrillo, M. C., Ryan, J. M., Khachaturian, A. S., Trzepacz, P., Amatniek, J., et al. (2011). Neuropsychiatric symptoms in Alzheimer's disease. *Alzheimers Dement.* 7, 532–539. doi: 10.1016/j.jalz.2011.05.2410
- Masters, C. L., Bateman, R., Blennow, K., Rowe, C. C., Sperling, R. A., and Cummings, J. L. (2015). Alzheimer's disease. *Nat. Rev. Dis. Primer* 1:15056. doi: 10.1038/nrdp.2015.56
- McKhann, G., Drachman, D., Folstein, M., Katzman, R., Price, D., and Stadlan, E. M. (1984). Clinical diagnosis of Alzheimer's disease: report of the NINCDS-ADRDA work group\* under the auspices of department of health and human services task force on Alzheimer's disease. *Neurology* 34, 939–939. doi: 10.1212/wnl.34.7.939
- McKhann, G. M., Knopman, D. S., Chertkow, H., Hyman, B. T., Jack, C. R., Kawas, C. H., et al. (2011). The diagnosis of dementia due to Alzheimer's disease: recommendations from the national institute on aging-Alzheimer's association workgroups on diagnostic guidelines for Alzheimer's disease. *Alzheimers Dement.* 7, 263–269. doi: 10.1016/j.jalz.2011.03.005
- Morris, J. C. (1993). The clinical dementia rating (CDR): current version and scoring rules. *Neurology* 43, 2412–2412. doi: 10.1212/wnl.43.11.2412-a
- Nobukawa, S., Yamanishi, T., Kasakawa, S., Nishimura, H., Kikuchi, M., and Takahashi, T. (2020). Classification methods based on complexity and synchronization of electroencephalography signals in Alzheimer's disease. *Front. Psychiatry* 11:255. doi: 10.3389/fpsy.2020.00255
- Nobukawa, S., Yamanishi, T., Nishimura, H., Wada, Y., Kikuchi, M., and Takahashi, T. (2019). Atypical temporal-scale-specific fractal changes in Alzheimer's disease EEG and their relevance to cognitive decline. *Cogn. Neurodyn.* 13, 1–11. doi: 10.1007/s11571-018-9509-x
- Panza, F., Frisardi, V., Capurso, C., D'Introno, A., Colacicco, A. M., Imbimbo, B. P., et al. (2010). Late-life depression, mild cognitive impairment and dementia: possible continuum? *Am. J. Geriatr. Psychiatry* 18, 98–116. doi: 10.1097/JGP.0b013e3181b0fa13
- Schelkens, P., Blennow, K., Breteler, M. M. B., de Strooper, B., Frisoni, G. B., Salloway, S., et al. (2016). Alzheimer's disease. *Lancet* 388, 505–517. doi: 10.1016/S0140-6736(15)01124-1
- Selkoe, D. J., and Hardy, J. (2016). The amyloid hypothesis of Alzheimer's disease at 25 years. *EMBO Mol. Med.* 8, 595–608. doi: 10.15252/emmm.201606210
- Smailovic, U., and Jelic, V. (2019). Neurophysiological markers of Alzheimer's disease: quantitative EEG approach. *Neurol. Ther.* 8, 37–55. doi: 10.1007/s40120-019-00169-0
- Soininen, H., Partanen, J., Pääkkönen, A., Koivisto, E., and Riekkinen, P. J. (1991). Changes in absolute power values of EEG spectra in the follow-up of Alzheimer's disease. *Acta Neurol. Scand.* 83, 133–136. doi: 10.1111/j.1600-0404.1991.tb04662.x
- World Health Organization (2020). *Dementia*. Available online at: <https://www.who.int/news-room/fact-sheets/detail/dementia>. Accessed July 19, 2020.
- Yang, A. C., Wang, S.-J., Lai, K.-L., Tsai, C.-F., Yang, C.-H., Hwang, J.-P., et al. (2013). Cognitive and neuropsychiatric correlates of EEG dynamic complexity in patients with Alzheimer's disease. *Prog. Neuro-psychopharmacol. Biol. Psychiatry* 47, 52–61. doi: 10.1016/j.pnpbp.2013.07.022

**Conflict of Interest:** The authors declare that the research was conducted in the absence of any commercial or financial relationships that could be construed as a potential conflict of interest.

Copyright © 2021 Liu, Fuh, Peng and Yang. This is an open-access article distributed under the terms of the Creative Commons Attribution License (CC BY). The use, distribution or reproduction in other forums is permitted, provided the original author(s) and the copyright owner(s) are credited and that the original publication in this journal is cited, in accordance with accepted academic practice. No use, distribution or reproduction is permitted which does not comply with these terms.