



Characterization of B-Genome Specific High Copy hAT MITE Families in *Brassica nigra* Genome

Sampath Perumal^{1*}, Brian James¹, Lily Tang¹, Sateesh Kagale², Stephen J. Robinson¹, Tae-Jin Yang³ and Isobel A. P. Parkin^{1*}

¹ Agriculture and Agri-Food Canada, Saskatoon, SK, Canada, ² National Research Council Canada, Saskatoon, SK, Canada, ³ Department of Plant Science, Plant Genomics and Breeding Institute, and Research Institute of Agriculture and Life Sciences, College of Agriculture and Life Sciences, Seoul National University, Seoul, South Korea

OPEN ACCESS

Edited by:

Michael R. McKain,
University of Alabama, United States

Reviewed by:

Dariusz Grzebelus,
University of Agriculture in
Krakow, Poland
Jingyin Yu,
Boyce Thompson Institute,
United States

*Correspondence:

Sampath Perumal
bioteksampath@gmail.com
Isobel A. P. Parkin
isobel.parkin@canada.ca

Specialty section:

This article was submitted to
Plant Systematics
and Evolution,
a section of the journal
Frontiers in Plant Science

Received: 04 May 2020

Accepted: 06 July 2020

Published: 21 July 2020

Citation:

Perumal S, James B, Tang L,
Kagale S, Robinson SJ, Yang T-J and
Parkin IAP (2020) Characterization
of B-Genome Specific High Copy
hAT MITE Families in
Brassica nigra Genome.
Front. Plant Sci. 11:1104.
doi: 10.3389/fpls.2020.01104

Miniature inverted-repeat transposable elements (MITEs) are non-autonomous class II transposons which have been shown to influence genome evolution. *Brassica nigra* L. (B-genome) is one of three *Brassica* diploids cultivated primarily as an oil crop, which harbors novel alleles important for breeding. Two new high copy hAT MITE families (BniHAT-1 and BniHAT-2) from the B-genome were characterized and their prevalence assessed in the genomes of the related diploids, *rapa* L. (A) and *Brassica oleracea* L. (C). Both novel MITE families were present at high copy numbers in the B-genome with 434 and 331 copies of BniHAT-1 and BniHAT-2, respectively. Yet less than 20 elements were identified in the genome assemblies of the A, and C -genomes, supporting B-genome specific proliferation of these MITE families. Although apparently randomly distributed across the genome, 68 and 70% of the B-genome MITEs were present within 2 kb flanking regions of annotated genes suggesting they might influence gene expression and/or function. In addition, MITE derived microRNAs and transcription factor binding sites suggested a putative role in gene regulation. Age of insertion analysis revealed that the major proliferation of these elements occurred during 2–3 million years ago. Additionally, site-specific polymorphism analyses showed that 44% MITEs were undergoing active amplification into the B-genome. Overall, this study provides a comprehensive analysis of two high copy MITE families, which were specifically amplified in the B-genome, suggesting a potential role in shaping the *Brassica* B-genome.

Keywords: *Brassica nigra* (black mustard), transposons (TE—transposable elements), hAT family, *Brassica*, miniature inverted-repeat transposable elements (MITEs)

INTRODUCTION

Transposable elements (TEs) constitute a major fraction of most eukaryotic genomes; for instance more than 85 and 71% of the *Triticum aestivum* and *Aedes albopictus* genome, respectively were occupied by TEs (Lee and Kim, 2014; Chen et al., 2015; Appels et al., 2018). Based on the mechanism of transposition TEs are typically classified into class I TEs (Retro-transposons) and class II TEs (DNA transposons). Class I TEs are mobilized into a new position of the same genome by a copy-and-paste mechanism through an RNA-intermediate, while class II TEs are mobilized

through a cut-and-paste mechanism. Autonomous TEs have functional coding regions allowing independent transposition while those lacking this ability are non-autonomous. Transposition of TEs catalyzed by transposases into different genomic regions can have a significant impact on gene structure, expression and function and ultimately may influence genome adaptation and evolution (Wicker et al., 2007; Sampath et al., 2015; Vicient and Casacuberta, 2017).

Miniature inverted-repeat transposable elements (MITEs) are non-autonomous class II DNA transposons, usually small (< 1000 bp) in size, AT-rich, and ubiquitously present in almost all plant genomes (Pritham, 2009; Bennetzen and Wang, 2014; Sampath and Yang, 2014). Each MITE contains signature structures known as terminal inverted repeats (TIRs ≥ 10 bp) at either end flanked by target site duplications (TSDs, 2–10 bp) (Fattash et al., 2013). MITEs are deletion derivatives derived from autonomous TEs thus share structure and sequence similarity with their parent element; for example a *Tourist* superfamily MITE, *mPing*, is derived from *ping* DNA transposons (Feschotte et al., 2002; Naito et al., 2009). Conversely, some MITE families, such as the *stowaway* MITE superfamily may have originated through cross mobilization facilitated by distantly related TEs such as *Marinar* like elements (Feschotte et al., 2005; Macko-Podgórní et al., 2019). Regardless of their size and origin and their requirement for transacting transposases, MITEs tend to be present in high copy numbers. In rice MITEs make up 10% of the total genome, consisting of 179,415 elements from 339 families (Chen et al., 2013). Though studies have suggested that MITEs are formed through usurping the endogenous gap repair mechanism, it is still unclear how MITE copy numbers increase (Naito et al., 2009).

MITEs are classified into 15 different superfamilies based on their TSDs in plant and animal genomes. So far seven superfamilies of MITE, Tc1/mariner, PIF/Harbinger, hAT, Mutator, CACTA, P-element, and Novosib, have been found in plants whereas other superfamilies were common in animals (Wicker et al., 2007; Chen et al., 2013). The hAT family has been investigated in many plant species including *Zea mays*, *Orzya sativa*, *Arabidopsis thaliana*, and *Brassica* species (Bundock and Hooykaas, 2005; Muehlbauer et al., 2006; Benjak et al., 2008; Menzel et al., 2012; Chen et al., 2013; Menzel et al., 2014; Sampath et al., 2014; Nouroz et al., 2015b) and is among the most prevalent of such elements, of those *Brassicaceae* species studied between 0.7 and 4.5% of the total genome length were covered by MITE species (Chen et al., 2013). Maize kernel color changing factor *Activator* (Ac), an autonomous hAT transposon was the first TE discovered followed by its non-autonomous partner element *Dissociation* (Ds) (Feschotte et al., 2002). Members of the hAT superfamily have been found in various distantly related organisms, suggesting their ancient origin, which predates the divergence of plant-fungi and animals (Kempken and Windhofer, 2001; Rubin et al., 2001). The extensive P-MITE database provides a collection of MITE sequences from 41 plant species that includes 3,527 families from 7 superfamilies (Chen et al., 2013). MITEs have been shown to be distributed into almost all genomic regions, although some

MITE families have a tendency to closely associate with genes (Guo et al., 2017). Insertion of MITEs into various genic and near genic-regions can impact regulation of genes and genome evolution (Oki et al., 2008; Naito et al., 2009). Various studies have suggested that MITEs play a direct role in transcriptional and post-transcriptional gene modifications by acting as an exon, a source of small RNAs, or providing the transcription start site and the poly(A)-tail (Naito et al., 2009; Sampath et al., 2013). Furthermore, their high copy and stable inheritance make MITEs a valuable tool for marker development (Monden et al., 2009; Sampath et al., 2015).

The genus *Brassica* (family *Brassicaceae*) is an economically important source of vegetable, oilseed and fodder crops (Cheng et al., 2017). The evolutionary relationship of the six *Brassica* species including the three diploid species, *Brassica rapa* L. (A-genome, $2n=2\times=485$ Mb), *B. nigra* L. (B, $2n=2\times=600$ Mb) and *B. oleracea* L. (C, $2n=2\times=630$ Mb) and derived allotetraploids *B. juncea* (L.) Czern. (AB, $2n=4\times=1100$ Mb), *B. carinata* A. Braun (BC, $2n=2\times=1230$ Mb) and *B. napus* L. (AC, $2n=2\times=1120$ Mb) was depicted by the triangle of U (Nagaharu, 1935). The recent availability of whole genome sequences for all species (except BC) has provided an unprecedented opportunity to study elements of genome structure and carry out comparative analysis (Wang et al., 2011; Chalhoub et al., 2014; Liu et al., 2014; Parkin et al., 2014; Yang et al., 2016). Though the B-genome has comparatively less economic importance than the A and C genomes, it comprises a pool of novel alleles conferring numerous elite characteristics for traits such as diseases resistance, salt and drought tolerance, which can be used for trait improvement in the valuable oilseed *B. napus* (Truco and Quiros, 1994). Genome sequencing of the A and C-genomes revealed that about 40–60% of the genome was occupied by repeat sequences including TEs and tandem repeats (Wang et al., 2011; Chalhoub et al., 2014; Liu et al., 2014; Parkin et al., 2014; Yang et al., 2016). While there have been a few studies of MITEs in *Brassica* genomes, there has as yet been no equivalent analysis of the B-genome (Nouroz et al., 2015a). In the current study, through comparison of 170 candidate MITE families between the diploid genomes two hAT MITE families which proliferated specifically in the B-genome were identified. Here, we characterized the two hAT MITE families and their distribution and potential evolutionary impact on the *Brassica* B-genome is discussed.

MATERIALS AND METHODS

Identification of MITE Families From *B. nigra* Genome

A newly developed *B. nigra* whole genome pseudo-chromosome assembly (Ni100-LR) derived from Nanopore read data was used, which with unanchored scaffolds covered 503.5 mega bases (Mb) (Perumal et al., 2020)¹. MITE Digger was used with default parameters (Yang, 2013) and identified 234 candidate MITE families. In addition, MITE finderII (Hu et al., 2018) was applied with default parameters, which identified 224

¹<http://cruciferseq.ca/>

potential families, of these 170 candidate MITEs were annotated with both programs and used for further analyses. MITE signature structures such as TIRs and TSDs were characterized using the selfBLAST tool from NCBI². Candidate MITE families were searched against Repbase and P-MITE database (Chen et al., 2013; Bao et al., 2015) to identify homologous MITEs in other plant genomes. MITE-derived microRNAs, were identified by searching MITE sequences from the two families against the available microRNA database, miRbase (version19)³ with default parameters for embryophyta genomes (Kozomara and Griffiths-Jones, 2013). Secondary structure of MITEs was created using the Mfold software program (Zuker, 2003). Putative transcription factor binding sites (TFBS) were identified from the MITE sequences using PROMO⁴ for genomes of embryophyta (Messegueur et al., 2002).

Distribution and Phylogenetic Analysis of MITE Members in A, B, and C-Genomes

In addition to the B-genome, a whole genome assembly for *B. rapa* (389.2 Mb) *V 1.5*, *B. oleracea* (488 Mb) Version 1.0 and *Arabidopsis thaliana* TAIR 10 (125 MB) were obtained from BRAD (Cheng et al., 2011), Ensembl (https://plants.ensembl.org/Brassica_oleracea/Info/Index) and TAIR (Huala et al., 2001), respectively. Furthermore to assess genome specificity, MITE members were extracted from available genome sequences of the *Brassica* allotetraploids, *B. juncea* (Yang et al., 2016) and *B. napus* (Chalhoub et al., 2014). Related MITEs were identified from the reference genomes based on two hAT families using BLASTn (E-value of E^{-05}), those with $\geq 80\%$ sequence alignment length and identity were considered intact MITEs and extracted from their respective genome. The position of MITE insertion on the B-genome relative to gene annotation was compared using a combination of bedtools and shell scripts. Intact MITEs were used for phylogenetic analysis. ClustalW alignment of MITE members of each family and phylogenetic trees were generated using the neighbor-joining method with 1,000 bootstrap replications in MEGA X (Kumar et al., 2018).

MITE Copy Numbers in the Brassica A, B, and C Genomes

MITE copy numbers were estimated in the three *Brassica* genomes using the previously described read depth approach (Waminal et al., 2015). Paired-reads from 11 *Brassica* accessions including *B. rapa*, *B. nigra*, and *B. oleracea* were obtained, accessions and data sources are detailed in **Table S1** (Chalhoub et al., 2014; Waminal et al., 2015). Using the CLC reference map tool included in CLC Assembly Cell (5.0.2.), whole genome shot-gun (WGS) reads were mapped against the MITE sequences to quantify the abundance in a haploid genome with the threshold level of more than 80% identity across more than 50% of the read length. Overall read depth was normalized to haploid genome coverage for all three diploid *Brassica* genomes based on corresponding genome sizes.

²<http://blast.ncbi.nlm.nih.gov/Blast.cgi>

³<http://www.mirbase.org/>

⁴http://algggen.lsi.upc.es/cgi-bin/promo_v3/promo/promoinit.cgi?dirDB=TF_8.3

Estimating MITE Insertion Time

The divergence rate between the individual members and their consensus sequences can be used to estimate the age of the element (Jiang et al., 2016). In order to estimate the age of the two MITE families, multiple sequence alignment of members and consensus sequences for each MITE family was carried out using clustalw. In order to avoid bias towards the more numerous subfamilies equal numbers of elements were used from each subfamily/clade to create the consensus. For example, for BniHAT-1 the consensus was created with 75 random members from BniHAT-1 clade I along with 75 members of BniHAT-1 clade II. Likewise, 69 members from clade II with all the members from clade I, III, and IV were used to create a consensus for BniHAT-2. Kimura 2-parameter distance method implemented in the MEGA X program was used to estimate the level of base substitution rate per site (k) between each MITE element and the consensus sequence (Kimura, 1980). Finally, MITE insertion time was then estimated using the formula $T = k/2r$, assuming $r = 1.30 \times 10^{-8}$ (Ma and Jackson, 2006).

Analysis of MITE Insertion Polymorphism (MIP)

Site-specific polymorphism or MITE insertion polymorphism (MIP) was analyzed for 22 different *Brassica* accessions to identify the presence (inserted site) or absence (empty site) and activity of a MITE in a specific genomic location (Sampath and Yang, 2014). Total DNA from the 22 accessions was extracted from fresh leaves based on the modified CTAB method (Allen et al., 2006). Accessions used for the MIP analysis included four *B. rapa* (A1-A4), fourteen *B. nigra* (B1-B14) and four *B. oleracea* (C1-C4) as described in **Table S2**. MITE flanking primers were designed using Primer3 for 60 target regions distributed over the B-genome (Rozen and Skaletsky, 2000). Primer sequences and their expected product size and gel profile information are listed in **Table S3**. PCR was performed in a 10 μ l total reaction volume consisting of 5 ng DNA concentration, 0.2 μ M of each primer, 1 \times PCR buffer, 2.5 μ M dNTPs, and 1 unit *Taq* DNA polymerase (Invitrogen, CA). PCR was carried out with the following conditions; 5 min at 94°C, 35 cycles of 95°C for 1 min, 57°C for 30 s, and 72°C for 1 min, with a final extension at 72°C for 5 mins. PCR products were separated by electrophoresis in 2% agarose gels with 1 \times TBE buffer, gels were pre-stained with GelRed and amplification products were visualised on a UV trans-illuminator.

RESULTS

Characterization of Two High Copy hAT Families in the B-Genome

The recently developed B-genome pseudo-chromosome assembly (Ni100-LR) was used for the characterization of MITEs (Perumal et al., 2020). Mining of MITE families using MITE Digger and MITE FinderII identified 170 candidate MITE families accounting for approximately 1.2% (6.3 Mb) of the B-genome (**Table S4**). Comparative analysis of the relative copy

number of the 170 MITE families from the three *Brassica* diploid genomes (A, B, C-genomes) revealed two MITE elements with high copy numbers in the B-genome compared to the A and C-genomes (**Table 1**). Both elements were comparatively short in size (673 and 666 bp) with 25 and 12 bp TIRs, respectively (**Figure S1**). Following previous classifications, based on the characteristic 8 bp TSD, the elements were identified as part of the hAT superfamily (Wicker et al., 2007). Named BniHAT-1 and BniHAT-2, both elements had high AT-content, 70 and 75% respectively, which is typical of a MITE family. Furthermore, homology searches against related MITE elements in Repbase and the P-MITE database revealed BniHAT-1 had homology with hAT elements from the grapevine genome while BniHAT-2 had homology with elements from the *A. thaliana* (**Table 1**).

Transposable element derived microRNAs have been shown to be involved in regulation of gene function by affecting destabilization and expression of mRNA. A search for MITE-derived microRNAs revealed a total of 11 different microRNAs, using an E-value of $1E^{-10}$, with six derived from the BniHAT-1 and five from the BniHAT-2 family (**Table S5**). The MITE-derived microRNAs were distributed randomly across the MITE sequences and five anti-sense microRNAs were also observed. Furthermore, predicted secondary structures for representative BniHAT MITE sequences suggested a mechanism for generation of the miRNAs (**Figure S2**). MITEs have been shown to influence transcriptional regulatory networks by providing novel transcription factor binding sites (TFBS) (Morata et al., 2018). Both MITE elements were found to contain 18 different potential TFBS that were enriched with stress responsive TFBS such as those for bZIP, MADS, and SBF1 transcription factors (**Table S6**). Studying the overall genome distribution of the 18 TFBS motifs revealed that the majority were found in TE space at levels which might be expected based on the repeat content of the genome; however, some appeared to be more prevalent in TE space, for example >78% of both the PHR1 (Phosphate starvation response) and LIM1 (Cysteine rich zinc-binding) motifs were located in TE space. For the BniHAT elements, which occupy less than 0.001% of the genome, 24 and 16% of the LIM1 and AP3:PI (MADS box transcription factor) motifs, respectively were derived from the two BniHAT MITE families. This finding is in keeping with previous analyses suggesting a role for TE in controlling gene expression, further functional analysis would be required to confirm a specific role for the BniHAT elements (Kuang et al., 2009; Cui et al., 2017).

Copy Number Analysis Based on Whole Genome Assembly and WGS Reads

Both MITE families were used to search the three diploid *Brassica* (A, B, C) and the *A.thaliana* (At) whole genome

assemblies. BLASTn analysis of BniHAT-1 revealed 434 intact members in the B-genome, while only one element was found in each of the three other genomes. Likewise, for BniHAT-2, 331, 3, 18, and 5 elements were found in the B, A, C and At-genomes, respectively (**Table 1**). Compared to BniHAT-1, BniHAT-2 had slightly higher numbers in all the related genomes and was found to have its highest copy number in the *B. oleracea* genome (**Table 1**). Both of the MITE families showed B-genome specific proliferation with 434 to 18-fold difference. In addition, analysis of MITE members in the available *Brassica* B-genome containing allotetraploid *B. juncea* (AB) identified 432 and 200 members from BniHAT-1 and BniHAT-2, respectively. Of these, 533 in total were positioned on chromosomes, with 78 and 83% of BniHAT-1 and BniHAT-2 elements, respectively being present in the B-subgenome of *B. juncea*. The remaining chromosome anchored elements (79 BniHAT-1 and 29 BniHAT-2) were from the A-subgenome suggesting recent mobilization of these elements. In comparison, only 2 copies of BniHAT elements were found in the *B. napus* (AC) genome suggesting no amplification.

Copy numbers were also estimated based on an WGS read depth approach for the *Brassica* diploid genomes. This revealed a similar pattern with that estimated using the whole genome assemblies, with 550, 10 and 25 BniHAT-1 and 850, 8 and 75 BniHAT-2 members in the B, A, and C-genome, respectively (**Figure 1**). While the B-genome has the highest copy numbers, with up to 20-fold differences, for both elements higher numbers were observed in the *Brassica* C-genome compared to the A (**Figure 1**).

Genomic Distribution of MITEs

Both MITEs families appeared to show a random distribution across the B-genome chromosomes (**Figure 2**). The MITE insertion positions were characterized in the B-genome to check for any preferential association with particular genomic regions or features. Out of 434 and 331 members, 184 (44%) BniHAT-1 and 156 (47%) BniHAT-2, respectively were in close proximity to genes (≤ 2 kb flanking) (**Figure 3; Table S6; Table S7**). This suggested the preferential association of both MITE families with euchromatic regions, although only one and three members from the BniHAT-1 and BniHAT-2 MITE families, respectively were inserted into gene exons (**Figure 3; Table 2**).

Phylogenetic Analysis and Age of the MITE Insertion

Phylogenetic analysis based on intact members from both MITE families reveals inter- and intra-genomic diversity for *Brassica* and the related species *A. thaliana*. BniHAT-1 family members

TABLE 1 | Characteristics of the two *Brassica nigra* (Bni) hAT families.

MITE family	size (bp)	TIR (bp)	TSD (bp)	AT (%)	Intact copies in reference genomes						Homologous element (HE)	HE inP-MITE DB
					<i>B. rapa</i> (A)	<i>B. nigra</i> (B)	<i>B. oleracea</i> (C)	<i>B. juncea</i> (AB)	<i>B. napus</i> (AC)	<i>A. thaliana</i>		
BniHAT-1	673	25	8	70	1	434	1	432	1	1	VIHAT2-N1_WV	DTA_Brr74
BniHAT-2	666	12	8	75	3	331	18	200	1	5	ATHATN1	DTA_Brr81

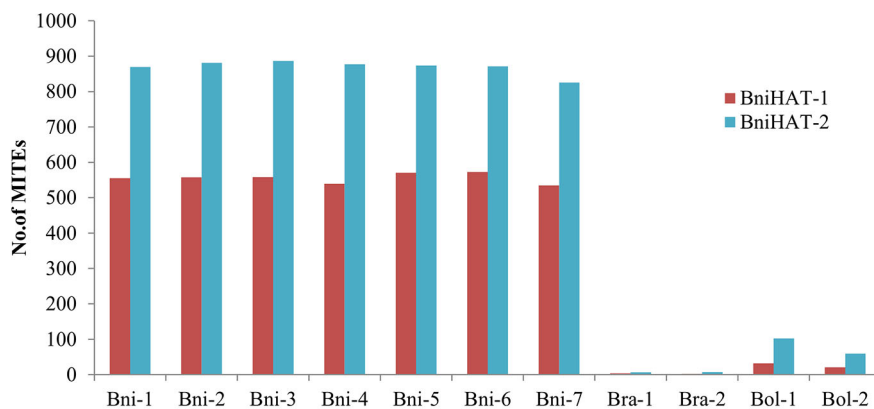


FIGURE 1 | Estimation of MITE copy numbers in four diploid *Brassica* genomes (*B. nigra*: Bni, *B. rapa*: Bra, *B. oleracea*: Bol) based on read mapping using whole genome sequence reads.

showed a lower level of intra-species divergence compared to BniHAT-2 and a distant relationship with the small number of inter-specific elements (Figure 4). Three clades (I–III), including one clade containing the solitary A and C-genome members, can be observed from the phylogenetic analysis of the 437 BniHAT-1 family members. Clade I and II consist of 75 and 359 B-genome specific members, respectively, suggesting that members were amplified in a B-genome specific manner (Figure 4A). Likewise, phylogenetic analysis of 357 BniHAT-2 family members revealed five different clades (I–V) with 33, 227, 81, 7, and 5 members for each clade, respectively. BniHAT-2 members from *A. thaliana* were grouped into a separate clade from the *Brassica* genomes. Members from Clades I and III contained related C-genome elements, while Clade II consisted of 229 members from the B-genome, and a single member from the A-genome (Figure 4B).

The age(s) of the MITE elements were estimated to suggest the time of differential diversification. This revealed that the BniHAT-1 family has two bursts of amplification, a larger expansion about 2 million years ago (mya) and a smaller expansion about 6 mya. While BniHAT-2 family members showed a major proliferation of 150 members at approximately 3 mya with a less well defined event about 10 mya (Figure 5).

Insertion Polymorphism of hAT Members in the Three Major Diploid *Brassica* Genomes

Insertion and potential activity of MITEs was studied using MITE insertion polymorphism (MIP) analysis, focusing on 60 specific sites in 22 *Brassica* accessions (Figure 6). Out of 60 targets analysed, which included 30 each from the two BniHAT families; 30 (100%) and 23 (77%) sites showed expected amplification, for BniHAT-1 and BniHAT-2 members, respectively. Overall, 52 out of the 53 amplified sites were specific to the B-genome and only one BniHAT-2 insertion was found in the C-genome, with no amplification found in the A-genome. MIP analysis revealed that 49 (92%) members

appeared to be polymorphic in at least one accession. In addition, 13 out of 53 (25%) members showed evidence of recent insertions in the B-genome for two or more accessions (Table S7).

DISCUSSION

MITEs play an important role in gene and genome evolution by influencing gene structure and expression (Sampath and Yang, 2014). Taking advantage of the recently sequenced *B. nigra* B-genome, genome-wide characterization of MITEs was completed using the *denovo* MITE identification tools, MITE Digger and MITE finderII (Yang, 2013; Hu et al., 2018). Comparative analysis of the candidate elements revealed two MITE superfamilies of hAT transposons, which showed unique amplification in the *Brassica* B-genome compared to A and C-genomes. There have been various studies focusing on MITEs in *Brassica* genomes suggesting their evolutionary importance and also utility as source of markers (Chen et al., 2013; Sampath et al., 2013; Sampath et al., 2014; Nouroz et al., 2015a; Nouroz et al., 2015b). Though there is an extensive collection of MITEs for many plant genomes, including *B. rapa* and *B. oleracea*, very few elements have been subjected to in-depth structural and functional characterization (Chen et al., 2013). In addition, few studies on comparative analysis have included the B-genome (Nouroz et al., 2015a). This study provides the first in depth characterization of two largely B-genome specific MITE families.

MITEs are generally present in large quantities (hundreds of thousands of copies) per genome. An analysis of MITEs in 19 *Arabidopsis* accessions revealed 343,485 MITE-related sequences which contribute to a significant proportion of the genome, and impact the evolution of the genome (Guo et al., 2017). Similarly, genome-wide characterization of MITEs in *B. rapa* revealed 45,821 MITE-related sequences belonging to 174 families that are believed to influence genome structure and evolution (Chen

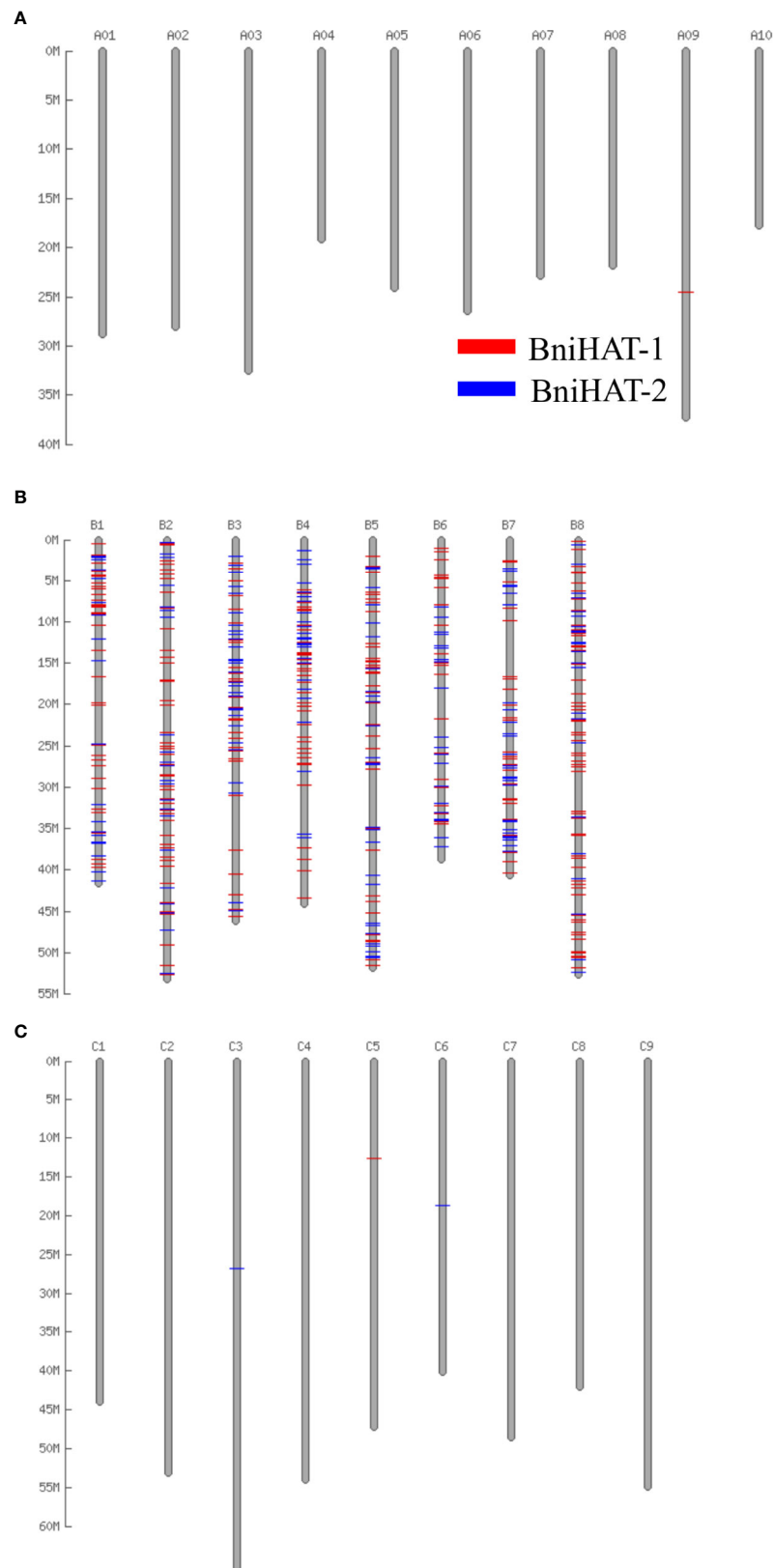


FIGURE 2 | Distribution of two HAT family members across the pseudo-chromosomes of the *B. rapa* (A), *B. nigra* (B) and *B. oleracea* (C) genome.

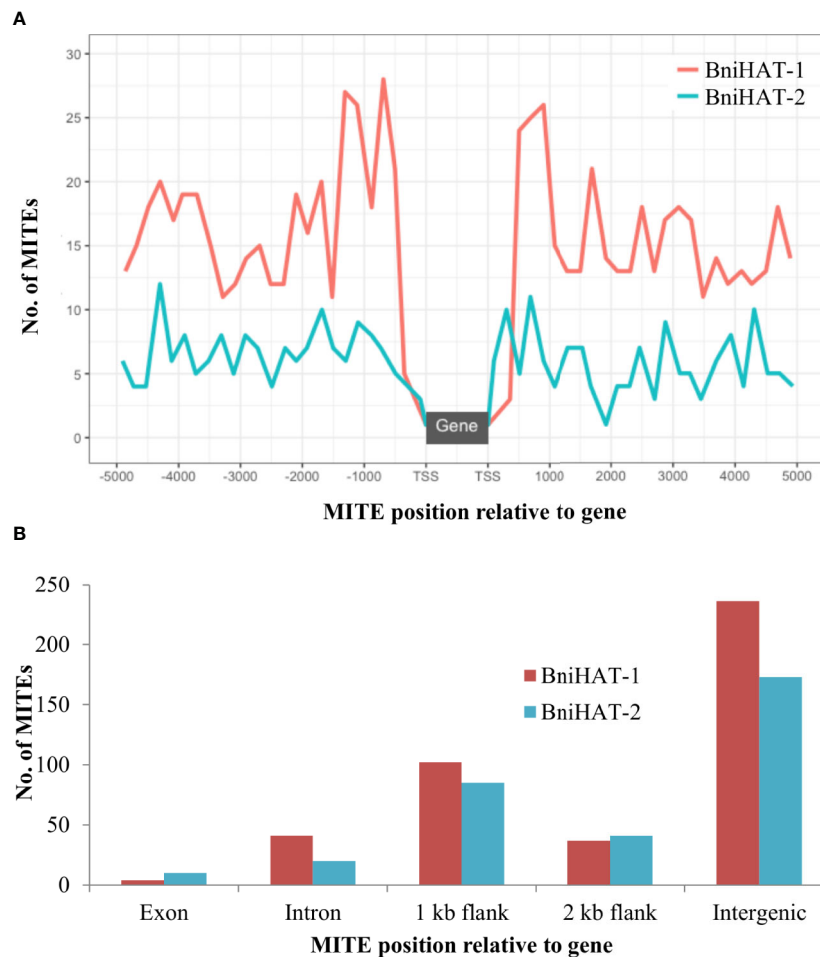


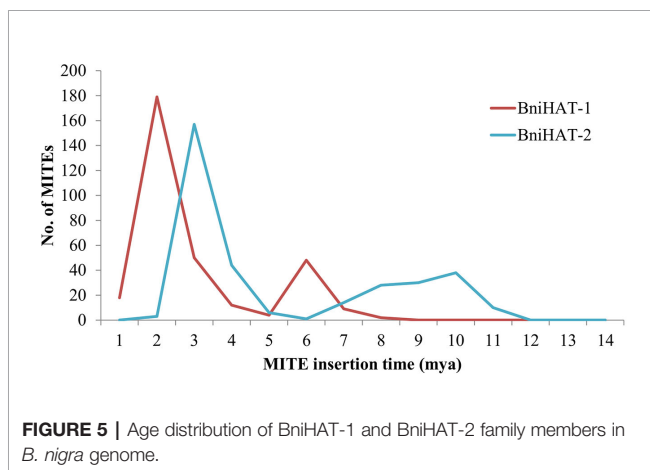
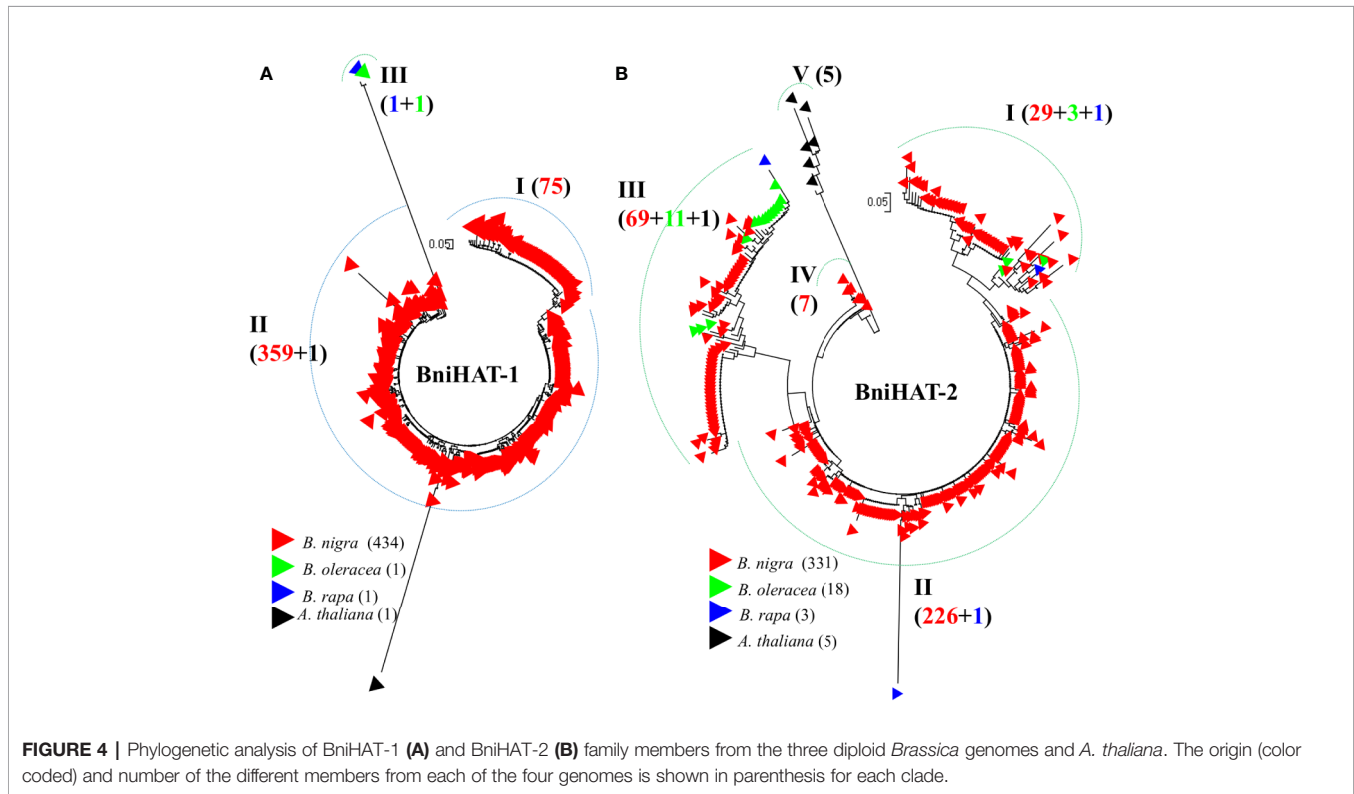
FIGURE 3 | Genomic position of BniHAT-1 and BniHAT-2 elements in the *B. nigra* genome. **(A)** Plot showing distribution of MITEs within 5 Kb of the Transcription start/stop site. **(B)** Graph showing number of MITEs in each genomic position.

TABLE 2 | MITE Members from BniHAT-1 and BniHAT-2 inserted into exonic regions of the *B. nigra* genome.

ID	Chr#	Start	End	Size	E-value	<i>B. nigra</i> _gene	Orthologue (<i>A. thaliana</i>)	Function
BniHAT2-4	B1	53,961,873	53,962,535	667	0	BniB01g054500.2N.1	AT3G10520	Class 2 non-symbiotic hemoglobin
BniHAT2-233	B4	6,296,857	6,297,488	649	0	BniB04g013020.2N.1	AT5G43600	Allantoate Amidohydrolase 2
BniHAT2-259	B5	16,032,215	16,031,555	667	0	BniB05g032100.2N.1		
BniHAT1-375	B4	8,429,613	8,428,948	675	0	BniB04g016760.2N.1	AT5G44900	Toll-Interleukin-Resistance (TIR) domain family protein

et al., 2013). Furthermore, extensive characterization of MITEs in *B. rapa* revealed many relatively intact copies in the genome, for instance, the BraSto family was present in >1,500 intact copies per haploid genome (Sampath et al., 2013). Likewise, hAT superfamilies of MITEs were identified and characterized in various species including *B. rapa* and *B. oleracea*, *Oryza species*, *Musa species*, and *Beta vulgaris* and were found to be present at high copy numbers (Bundock and Hooykaas, 2005; Muehlbauer et al., 2006; Nouroz et al., 2015b). MITEs comprised

approximately 1% of the *B. nigra* genome (Perumal et al., 2020), and in our analysis we identified two hAT families that are largely specific to the B-genome. Genome or lineage specific amplification of transposons including MITEs has been observed for many species (Feschotte et al., 2002; Choi et al., 2014) and has been suggested to play a role not only in increasing genome size but more specifically in genome adaptation (Parisod et al., 2010; Belyayev, 2014). Recent analysis of MITEs in multiple carrot genomes revealed extensive diversity in MITE insertion site



polymorphism and differential association of particular MITE families with transcription factors, suggesting a role in gene regulation (Macko-Podgórní et al., 2019).

After polyploidization events in plants, bursts of transposon amplification have been found and thought to mitigate the effects of genome shock and gene dosage (Vicient and Casacuberta, 2017). In particular, bursts of transposition into various genic regions can take control of nearby gene expression for adaptation and genome evolution (Naito et al., 2009; Tenaillon et al., 2010). Furthermore, transposition bursts also influence structural changes of genes and genomes by subsequent inter-element recombination and chromosomal rearrangement, which can result in a decrease of genome size and loss of chromosomes

as a long-term path to diploidization (Vicient and Casacuberta, 2017). This evolutionary response is unique for each transposable element family and each genome (Han et al., 2010; Lu et al., 2011). For example, characterization of TE types in *Gossypium* species revealed that different TE families with lineage-specific amplification caused variation in genome size (Hawkins et al., 2006). In *Brassica*, the centromeric associated PCRBr gypsy transposon specifically amplified in the A-genome (Lim et al., 2007). On the other hand, the B-genome does not have centromeric tandem repeats, which are common to A and C-genomes, suggesting a divergent evolutionary path (Lim et al., 2007; Koo et al., 2011). In this study, two MITEs were identified that specifically proliferated in the B-genome while few copies were found in the close relatives, implying the importance and potential influence of these MITEs on B-genome evolution. We also observed that BniHAT members are present at a low copy number in the A-subgenome of *B. juncea* suggesting active mobilization of BniHAT elements and implying a possible role in divergence of the allotetraploid sub-genomes.

MITEs can be activated by stress causing them to transpose into a different genomic location, while also amplifying their copy number; possibly by an abortive gap repair mechanism or by an unknown mechanism (Naito et al., 2009). Analysis of MITE age based on synonymous substitution rate revealed that both B-genome MITE families have a long and continuous evolutionary trajectory from 1–14 mya. Though both MITE families showed irregular and gradual amplification until 2 mya, the largest events occurred about 2–3 mya for both

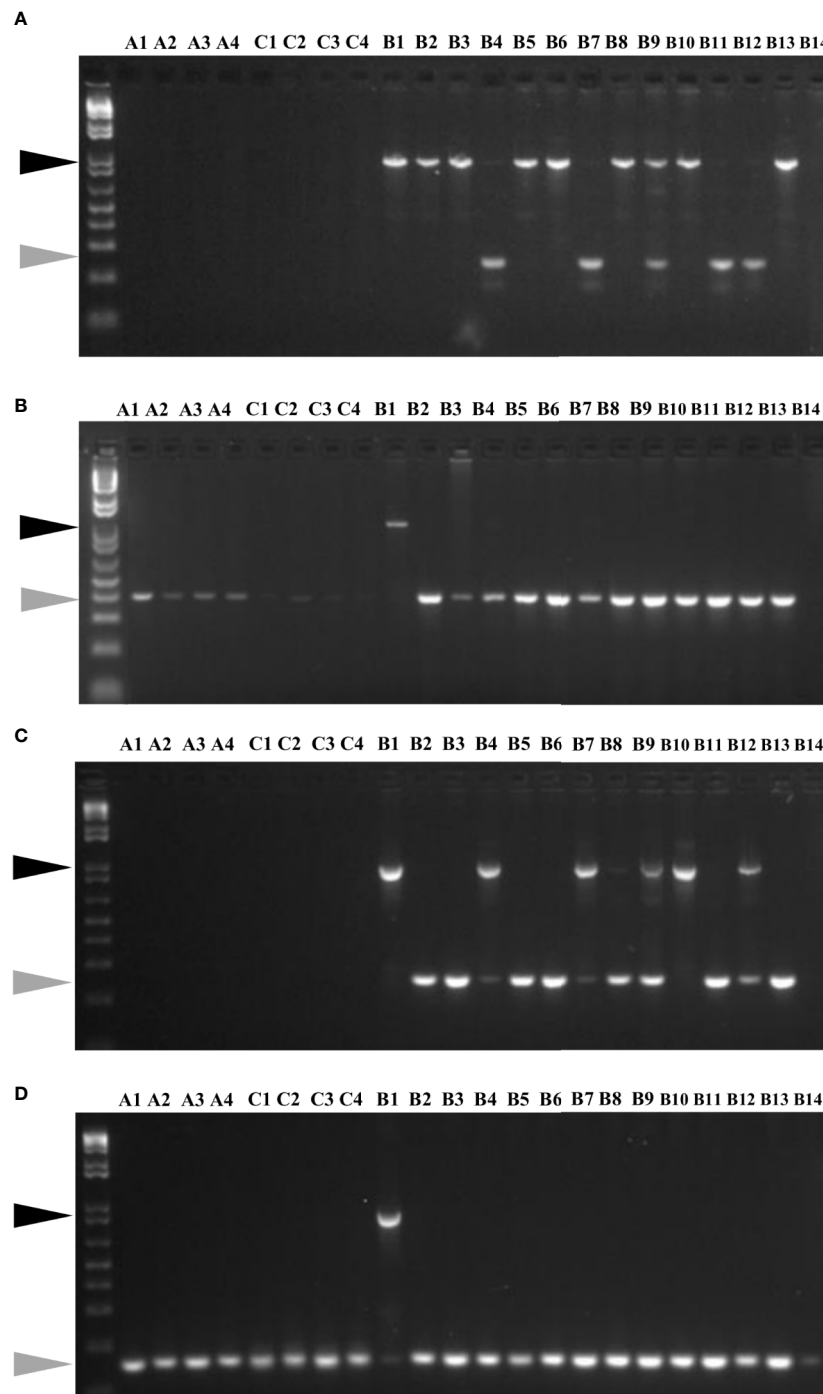


FIGURE 6 | MITE insertion polymorphisms analyses of members from BniHAT-1 (**A, B**) and BniHAT-2 (**C, D**) families in three diploid *Brassica* genomes.

families, speculating a specific role of BniHAT families in B-genome evolution. The *Brassica* B-genome diverged 9 mya from the common ancestor of *B. rapa-oleracea*; independent amplification of the BniHAT elements in the B-genome suggest a role in genome adaptation and their close association

with genic regions implicate their potential for impacting gene regulation.

MITEs have a tendency to distribute randomly across the genome, yet associate with genes or near genic regions and the distribution of MITEs into various genomic locations such as

exon, intron and regulatory regions has the ability to influence gene structure, function and evolution (Naito et al., 2009). Based on our analysis, a significant proportion of members from both B-genome families were inserted proximal to gene regions (≤ 2 Kb), suggesting they may have a functional influence on associated genes. In addition, microRNAs derived from MITEs may influence gene regulation which could be important for B-genome evolution (**Table S5**) (Morata et al., 2018). Furthermore, a number of potential TFBS were found in the two MITE family sequences, in particular the two BniHAT MITE families contributed 24 and 16% of LIM1 and AP3:PI motifs from the total genome, suggesting a putative role in gene regulation and stress responses (**Table S6**) (Hénaff et al., 2014). However, more functional analysis will be required to support the assumption of MITE-derived microRNA and TFBS. The abundance, genic association, and short nature of MITEs facilitates their use as simple markers in diversity and evolution studies (Sampath et al., 2015). Intact and stable inheritance of MITE can provide a source of markers for QTL and association studies (Sampath and Yang, 2014). Insertion polymorphism analysis based on MITE flanking markers provided evidence of insertion and activity in divergent B genome varieties.

CONCLUSIONS

MITEs are an important transposon family which are present at high copy number and would be expected to impact structural and functional divergence of genes. Two hAT MITE families specific to the *B. nigra* genome were identified. Both MITE families were largely absent from the related A and C-genomes but are present at high copy numbers and have undergone relatively recent amplification in the B-genome. Though hAT family members show a random distribution throughout the genome there was a biased association with genes or gene related regions suggesting the importance of these MITEs to structural and functional evolution of the *B. nigra* genome.

REFERENCES

- Allen, G., Flores-Vergara, M., Krasynanski, S., Kumar, S., and Thompson, W. (2006). A modified protocol for rapid DNA isolation from plant tissues using cetyltrimethylammonium bromide. *Nat. Protoc.* 1, 2320. doi: 10.1038/nprot.2006.384
- Appels, R., Eversole, K., Feuillet, C., Keller, B., Rogers, J., Stein, N., et al. (2018). Shifting the limits in wheat research and breeding using a fully annotated reference genome. *Science* 361. doi: 10.1126/science.aar7191
- Bao, W., Kojima, K. K., and Kohany, O. (2015). Repbase Update, a database of repetitive elements in eukaryotic genomes. *Mob. DNA* 6, 11. doi: 10.1186/s13100-015-0041-9
- Belyayev, A. (2014). Bursts of transposable elements as an evolutionary driving force. *J. Evolution. Biol.* 27, 2573–2584. doi: 10.1111/jeb.12513
- Benjak, A., Forneck, A., and Casacuberta, J. M. (2008). Genome-wide analysis of the “cut-and-paste” transposons of grapevine. *PLoS One* 3, e3107. doi: 10.1371/journal.pone.0003107
- Bennetzen, J. L., and Wang, H. (2014). The Contributions of Transposable Elements to the Structure, Function, and Evolution of Plant Genomes. *Annu. Rev. Plant Biol.* 65, 505–530. doi: 10.1146/annurev-arplant-050213-035811

DATA AVAILABILITY STATEMENT

All datasets presented in this study are included in the article/**Supplementary Material**.

AUTHOR CONTRIBUTIONS

SP and IP designed and contributed to the original concept of the project. SP has done the bioinformatics analysis and molecular experiments. LT helped with DNA and PCR analysis. SP and IP wrote the manuscript. SR helped with figure development. BJ, SR, SK, and T-JY helped with revision and editing of the manuscript. All authors contributed to the article and approved the submitted version.

FUNDING

This work was supported by funding from the AAFC Canadian Crop Genomics Initiative and the Global Institute for Food Security.

ACKNOWLEDGMENTS

We like to acknowledge Raju Soolanayakanahally and Yogendra Khedikar for critical commenting and Erin Higgins, Diana Bekkaoui for experimental setup for the manuscript.

SUPPLEMENTARY MATERIAL

The Supplementary Material for this article can be found online at: <https://www.frontiersin.org/articles/10.3389/fpls.2020.01104/full#supplementary-material>

- Bundock, P., and Hooykaas, P. (2005). An Arabidopsis hAT-like transposase is essential for plant development. *Nature* 436, 282. doi: 10.1038/nature03667
- Chalhoub, B., Denoeud, F., Liu, S., Parkin, I. A., Tang, H., Wang, X., et al. (2014). Plant genetics. Early allopolyploid evolution in the post-Neolithic *Brassica napus* oilseed genome. *Science* 345, 950–953. doi: 10.1126/science.1253435
- Chen, J., Hu, Q., Zhang, Y., Lu, C., and Kuang, H. (2013). P-MITE: a database for plant miniature inverted-repeat transposable elements. *Nucleic Acids Res.* 42, D1176–D1181. doi: 10.1093/nar/gkt1000
- Chen, X.-G., Jiang, X., Gu, J., Xu, M., Wu, Y., Deng, Y., et al. (2015). Genome sequence of the Asian Tiger mosquito, *Aedes albopictus*, reveals insights into its biology, genetics, and evolution. *Proc. Natl. Acad. Sci.* 112, E5907–E5915. doi: 10.1073/pnas.1516410112
- Cheng, F., Liu, S., Wu, J., Fang, L., Sun, S., Liu, B., et al. (2011). BRAD, the genetics and genomics database for *Brassica* plants. *BMC Plant Biol* 11 (1), 136. doi: 10.1186/1471-2229-11-136
- Cheng, F., Liang, J., Cai, C., Cai, X., Wu, J., and Wang, X. (2017). Genome sequencing supports a multi-vertex model for Brassicaceae species. *Curr. Opin. Plant Biol.* 36, 79–87. doi: 10.1016/j.pbi.2017.01.006
- Choi, H. I., Waminal, N. E., Park, H. M., Kim, N. H., Choi, B. S., Park, M., et al. (2014). Major repeat components covering one-third of the ginseng (*Panax*

- ginseng CA Meyer) genome and evidence for allotetraploidy. *Plant J.* 77, 906–916. doi: 10.1111/tpj.12441
- Cui, J., You, C., and Chen, X. (2017). The evolution of microRNAs in plants. *Curr. Opin. Plant Biol.* 35, 61–67. doi: 10.1016/j.pbi.2016.11.006
- Fattash, I., Rooke, R., Wong, A., Hui, C., Luu, T., Bhardwaj, P., et al. (2013). Miniature inverted-repeat transposable elements: discovery, distribution, and activity. *Genome* 56, 475–486. doi: 10.1139/gen-2012-0174
- Feschotte, C., Jiang, N., and Wessler, S. R. (2002). Plant transposable elements: where genetics meets genomics. *Nat. Rev. Genet.* 3, 329. doi: 10.1038/nrg793
- Feschotte, C., Osterlund, M. T., Peeler, R., and Wessler, S. R. (2005). DNA-binding specificity of rice mariner-like transposases and interactions with Stowaway MITEs. *Nucleic Acids Res.* 33, 2153–2165. doi: 10.1093/nar/gki509
- Guo, C., Spinelli, M., Ye, C., Li, Q. Q., and Liang, C. (2017). Genome-Wide Comparative Analysis of Miniature Inverted Repeat Transposable Elements in 19 Arabidopsis thaliana Ecotype Accessions. *Sci. Rep.* 7, 2634. doi: 10.1038/s41598-017-02855-1
- Han, M.-J., Shen, Y.-H., Gao, Y.-H., Chen, L.-Y., Xiang, Z.-H., and Zhang, Z. (2010). Burst expansion, distribution and diversification of MITEs in the silkworm genome. *BMC Genomics* 11, 520. doi: 10.1186/1471-2164-11-520
- Hawkins, J. S., Kim, H., Nason, J. D., Wing, R. A., and Wendel, J. F. (2006). Differential lineage-specific amplification of transposable elements is responsible for genome size variation in Gossypium. *Genome Res.* 16, 1252–1261. doi: 10.1101/gr.5282906
- Hénaff, E., Vives, C., Desvoyes, B., Chaurasia, A., Payet, J., Gutierrez, C., et al. (2014). Extensive amplification of the E2F transcription factor binding sites by transposons during evolution of Brassica species. *Plant J.* 77, 852–862. doi: 10.1111/tpj.12434
- Hu, J., Zheng, Y., and Shang, X. (2018). MiteFinderII: a novel tool to identify miniature inverted-repeat transposable elements hidden in eukaryotic genomes. *BMC Med. Genomics* 11, 101. doi: 10.1186/s12920-018-0418-y
- Huala, E., Dickerman, A. W., Garcia-Hernandez, M., Weems, D., Reiser, L., Lafond, F., et al. (2001). The Arabidopsis Information Resource (TAIR): a comprehensive database and web-based information retrieval, analysis, and visualization system for a model plant. *Nucleic Acids Res.* 29, 102–105. doi: 10.1093/nar/29.1.102
- Jiang, S.-H., Li, G.-Y., and Xiong, X.-M. (2016). Novel miniature inverted-repeat transposable elements derived from novel CACTA transposons were discovered in the genome of the ant Camponotus floridanus. *Genes Genomics* 38, 1189–1199. doi: 10.1007/s13258-016-0464-9
- Kempken, F., and Windhofer, F. (2001). The hAT family: a versatile transposon group common to plants, fungi, animals, and man. *Chromosoma* 110, 1–9. doi: 10.1007/s004120000118
- Kimura, M. (1980). A simple method for estimating evolutionary rates of base substitutions through comparative studies of nucleotide sequences. *J. Mol. Evol.* 16, 111–120. doi: 10.1007/BF01731581
- Koo, D. H., Hong, C. P., Batley, J., Chung, Y. S., Edwards, D., Bang, J. W., et al. (2011). Rapid divergence of repetitive DNAs in Brassica relatives. *Genomics* 97, 173–185. doi: 10.1016/j.ygeno.2010.12.002
- Kozomara, A., and Griffiths-Jones, S. (2013). miRBase: annotating high confidence microRNAs using deep sequencing data. *Nucleic Acids Res.* 42, D68–D73. doi: 10.1093/nar/gkt1181
- Kuang, H., Padmanabhan, C., Li, F., Kamei, A., Bhaskar, P. B., Ouyang, S., et al. (2009). Identification of miniature inverted-repeat transposable elements (MITEs) and biogenesis of their siRNAs in the Solanaceae: new functional implications for MITEs. *Genome Res.* 19, 42–56. doi: 10.1101/gr.078196.108
- Kumar, S., Stecher, G., Li, M., Knyaz, C., and Tamura, K. (2018). MEGA X: Molecular Evolutionary Genetics Analysis across Computing Platforms. *Mol. Biol. Evol.* 35, 1547–1549. doi: 10.1093/molbev/msy096
- Lee, S.-I., and Kim, N.-S. (2014). Transposable Elements and Genome Size Variations in Plants. *Genomics Inf.* 12, 87–97. doi: 10.5808/GI.2014.12.3.87
- Lim, K. B., Yang, T. J., Hwang, Y. J., Kim, J. S., Park, J. Y., Kwon, S. J., et al. (2007). Characterization of the centromere and peri-centromere retrotransposons in Brassica rapa and their distribution in related Brassica species. *Plant J.* 49, 173–183. doi: 10.1111/j.1365-3113X.2006.02952.x
- Liu, S., Liu, Y., Yang, X., Tong, C., Edwards, D., Parkin, I. A., et al. (2014). The Brassica oleracea genome reveals the asymmetrical evolution of polyploid genomes. *Nat. Commun.* 5, 3930. doi: 10.1038/ncomms4930
- Lu, C., Chen, J., Zhang, Y., Hu, Q., Su, W., and Kuang, H. (2011). Miniature inverted-repeat transposable elements (MITEs) have been accumulated through amplification bursts and play important roles in gene expression and species diversity in Oryza sativa. *Mol. Biol. Evol.* 29, 1005–1017. doi: 10.1093/molbev/msr282
- Ma, J., and Jackson, S. A. (2006). Retrotransposon accumulation and satellite amplification mediated by segmental duplication facilitate centromere expansion in rice. *Genome Res.* 16, 251–259. doi: 10.1101/gr.4583106
- Macko-Podgórní, A., Stelmach, K., Kwolek, K., and Grzebelus, D. (2019). Stowaway miniature inverted repeat transposable elements are important agents driving recent genomic diversity in wild and cultivated carrot. *Mobile DNA* 10, 1–17. doi: 10.1186/s13100-019-0190-3
- Menzel, G., Krebs, C., Diez, M., Holtgräwe, D., Weisshaar, B., Minoche, A. E., et al. (2012). Survey of sugar beet (Beta vulgaris L.) hAT transposons and MITE-like hATpin derivatives. *Plant Mol. Biol.* 78, 393–405. doi: 10.1007/s11103-011-9872-z
- Menzel, G., Heitkam, T., Seibt, K. M., Nouroz, F., Müller-Stoermer, M., Heslop-Harrison, J. S., et al. (2014). The diversification and activity of hAT transposons in Musa genomes. *Chromosome Res.* 22, 559–571. doi: 10.1007/s10577-014-9445-5
- Messegue, X., Escudero, R., Farré, D., Nuñez, O., Martínez, J., and Albà, M. M. (2002). PROMO: detection of known transcription regulatory elements using species-tailored searches. *Bioinformatics* 18, 333–334. doi: 10.1093/bioinformatics/18.2.333
- Monden, Y., Naito, K., Okumoto, Y., Saito, H., Oki, N., Tsukiyama, T., et al. (2009). High Potential of a Transposon mPing as a Marker System in japonica × japonica Cross in Rice. *DNA Res.* 16, 131–140. doi: 10.1093/dnares/dsp004
- Morata, J., Marin, F., Payet, J., and Casacuberta, J. M. (2018). Plant Lineage-Specific Amplification of Transcription Factor Binding Motifs by Miniature Inverted-Repeat Transposable Elements (MITEs). *Genome Biol. Evol.* 10, 1210–1220. doi: 10.1093/gbe/evy073
- Muehlbauer, G. J., Bhau, B. S., Syed, N. H., Heinen, S., Cho, S., Marshall, D., et al. (2006). A hAT superfamily transposase recruited by the cereal grass genome. *Mol. Genet. Genomics* 275, 553–563. doi: 10.1007/s00438-006-0098-8
- Nagaharu, U. (1935). Genome analysis in Brassica with special reference to the experimental formation of B. napus and peculiar mode of fertilization. *pn. J. Bot.* 7 (7), 389–452.
- Naito, K., Zhang, F., Tsukiyama, T., Saito, H., Hancock, C. N., Richardson, A. O., et al. (2009). Unexpected consequences of a sudden and massive transposon amplification on rice gene expression. *Nature* 461, 1130. doi: 10.1038/nature08479
- Nouroz, F., Noreen, S., and Heslop-Harrison, J. S. (2015a). Evolutionary genomics of miniature inverted-repeat transposable elements (MITEs) in Brassica. *Mol. Genet. Genomics* 290, 2297–2312. doi: 10.1007/s00438-015-1076-9
- Nouroz, F., Noreen, S., and Heslop-Harrison, J. S. (2015b). Identification, characterization and diversification of non-autonomous hAT transposons and unknown insertions in Brassica. *Genes Genomics* 37, 945–958. doi: 10.1007/s13258-015-0324-z
- Oki, N., Yano, K., Okumoto, Y., Tsukiyama, T., Teraishi, M., and Tanisaka, T. (2008). A genome-wide view of miniature inverted-repeat transposable elements (MITEs) in rice, Oryza sativa ssp. japonica. *Genes Genet. Syst.* 83, 321–329. doi: 10.1266/ggs.83.321
- Parisod, C., Alix, K., Just, J., Petit, M., Sarilar, V., Mhiri, C., et al. (2010). Impact of transposable elements on the organization and function of allopolyploid genomes. *New Phytol.* 186, 37–45. doi: 10.1111/j.1469-8137.2009.03096.x
- Parkin, I. A., Koh, C., Tang, H., Robinson, S. J., Kagale, S., Clarke, W. E., et al. (2014). Transcriptome and methylome profiling reveals relics of genome dominance in the mesopolyploid Brassica oleracea. *Genome Biol.* 15, R77. doi: 10.1186/gb-2014-15-6-r77
- Perumal, S., Koh, C. S., Jin, L., Buchwaldt, M., Higgins, E., Zheng, C., et al. (2020). High contiguity long read assembly of Brassica nigra allows localization of active centromeres and provides insights into the ancestral Brassica genome. *BioRxiv*. doi: 10.1101/2020.02.03.932665
- Pritham, E. J. (2009). Transposable Elements and Factors Influencing their Success in Eukaryotes. *J. Hered.* 100, 648–655. doi: 10.1093/jhered/esp065
- Rozen, S., and Skaletsky, H. (2000). Primer3 on the WWW for general users and for biologist programmers. *Bioinf. Methods Protoc.* 132, 365–386. doi: 10.1385/1-59259-192-2:365
- Rubin, E., Lithwick, G., and Levy, A. A. (2001). Structure and evolution of the hAT transposon superfamily. *Genetics* 158, 949–957.

- Sampath, P., and Yang, T.-J. (2014). Miniature Inverted-repeat Transposable Elements (MITEs) as valuable genomic resources for the evolution and breeding of *Brassica* crops. *Plant Breed. Biotechnol.* 2, 322–333. doi: 10.9787/PBB.2014.2.4.322
- Sampath, P., Lee, S.-C., Lee, J., Izzah, N. K., Choi, B.-S., Jin, M., et al. (2013). Characterization of a new high copy Stowaway family MITE, BRAMI-1 in *Brassica* genome. *BMC Plant Biol.* 13, 56. doi: 10.1186/1471-2229-13-56
- Sampath, P., Murukarthick, J., Izzah, N. K., Lee, J., Choi, H.-I., Shirasawa, K., et al. (2014). Genome-Wide Comparative Analysis of 20 Miniature Inverted-Repeat Transposable Element Families in *Brassica rapa* and *B. oleracea*. *PLoS One* 9, e94499. doi: 10.1371/journal.pone.0094499
- Sampath, P., Lee, J., Cheng, F., Wang, X., and Yang, T.-J. (2015). “Miniature transposable elements (mTEs): impacts and uses in the Brassica genome,” In *The Brassica rapa Genome* (Berlin Heidelberg: Springer), pp. 65–81.
- Tenaillon, M. I., Hollister, J. D., and Gaut, B. S. (2010). A triptych of the evolution of plant transposable elements. *Trends Plant Sci.* 15, 471–478. doi: 10.1016/j.tplants.2010.05.003
- Truco, M. J., and Quiros, C. F. (1994). Structure and organization of the B genome based on a linkage map in *Brassica nigra*. *Theor. Appl. Genet.* 89, 590–598. doi: 10.1007/BF00222453
- Vicient, C. M., and Casacuberta, J. M. (2017). Impact of transposable elements on polyploid plant genomes. *Ann. Bot.* 120, 195–207. doi: 10.1093/aob/mcx078
- Waminal, N. E., Perumal, S., Lim, K. B., Park, B.-S., Kim, H. H., and Yang, T.-J. (2015). “Genomic Survey of the Hidden Components of the *B. rapa* Genome,” In *The Brassica rapa Genome* (Berlin Heidelberg: Springer). pp. 83–96.
- Wang, X., Wang, H., Wang, J., Sun, R., Wu, J., Liu, S., et al. (2011). The genome of the mesopolyploid crop species *Brassica rapa*. *Nat. Genet.* 43, 1035–1039. doi: 10.1038/ng.919
- Wicker, T., Sabot, F., Hua-Van, A., Bennetzen, J. L., Capy, P., Chalhoub, B., et al. (2007). A unified classification system for eukaryotic transposable elements. *Nat. Rev. Genet.* 8, 973–982. doi: 10.1038/nrg2165
- Yang, J., Liu, D., Wang, X., Ji, C., Cheng, F., Liu, B., et al. (2016). The genome sequence of allopolyploid *Brassica juncea* and analysis of differential homoeolog gene expression influencing selection. *Nat. Genet.* 48, 1225–1232. doi: 10.1038/ng.3657
- Yang, G. (2013). MITE Digger, an efficient and accurate algorithm for genome wide discovery of miniature inverted repeat transposable elements. *BMC Bioinf.* 14, 186. doi: 10.1186/1471-2105-14-186
- Zuker, M. (2003). Mfold web server for nucleic acid folding and hybridization prediction. *Nucleic Acids Res.* 31, 3406–3415. doi: 10.1093/nar/gkg595

Conflict of Interest: The authors declare that the research was conducted in the absence of any commercial or financial relationships that could be construed as a potential conflict of interest.

Copyright © 2020 Perumal, James, Tang, Kagale, Robinson, Yang and Parkin. This is an open-access article distributed under the terms of the Creative Commons Attribution License (CC BY). The use, distribution or reproduction in other forums is permitted, provided the original author(s) and the copyright owner(s) are credited and that the original publication in this journal is cited, in accordance with accepted academic practice. No use, distribution or reproduction is permitted which does not comply with these terms.