



Chicken or the Egg: The Reciprocal Association Between Feeding Behavior and Animal Welfare and Their Impact on Productivity in Dairy Cows

Pol Llonch^{1*}, Eva Mainau¹, Ignacio R. Ipharraguerre^{2†}, Fernando Bargo^{2†}, Gemma Tedó², Marta Blanch² and Xavier Manteca¹

OPEN ACCESS

Edited by:

Marcia Endres,
University of Minnesota Twin Cities,
United States

Reviewed by:

Amber Adams Progar,
Washington State University,
United States
Jeremy N. Marchant-Forde,
Livestock Behavior Research Unit
(USDA-ARS), United States

*Correspondence:

Pol Llonch
pol.llonch@uab.cat

†Present Address:

Ignacio Ipharraguerre,
Institute of Human Nutrition and Food
Science, University of Kiel, Kiel,
Germany
Fernando Bargo,
Escuela para Graduados, Facultad de
Agronomía, Universidad de Buenos
Aires, Buenos Aires, Argentina

Specialty section:

This article was submitted to
Animal Behavior and Welfare,
a section of the journal
Frontiers in Veterinary Science

Received: 07 June 2018

Accepted: 19 November 2018

Published: 05 December 2018

Citation:

Llonch P, Mainau E, Ipharraguerre IR,
Bargo F, Tedó G, Blanch M and
Manteca X (2018) Chicken or the Egg:
The Reciprocal Association Between
Feeding Behavior and Animal Welfare
and Their Impact on Productivity in
Dairy Cows. *Front. Vet. Sci.* 5:305.
doi: 10.3389/fvets.2018.00305

¹ School of Veterinary Science, Autonomous University of Barcelona, Cerdanyola del Vallès, Spain, ² Innovation Division, Lucta S.A., UAB Research Park, Cerdanyola del Vallès, Spain

Feeding behavior in dairy cattle has a significant impact on feed efficiency, which is important for increasing the profitability of livestock and, at the same time, reducing the environmental impact. Feeding behavior can be measured by feeding time, meal duration, meal frequency, feeding rate, and rumination time. Higher feed intake is related to lower feed efficiency; whereas, an increase in feeding time facilitates chewing, reduces feed particle size and increases its digestibility. More frequent and shorter meals are usually associated with a more efficient use of feed due to improvement of feed digestibility. Rumination time is positively associated with milk production. Impaired health is associated with variations in feeding behavior, which can be used to identify and predict some diseases such as ketosis, mastitis, or lameness. Changes in rumination time are also a reliable indicator of mastitis, lameness, ketosis, abomasal displacement, and the onset of calving. In addition to the cause-effect relationship between disease and changes in feeding behavior, there are also some cases in which changes in feeding behavior may lead to an increased risk of disease, as exemplified by the relationship of feeding rate with sub-acute ruminal acidosis. Feeding behavior is regulated by internal and external factors and some of them are relevant for animal welfare. The main welfare-associated factors influencing feeding behavior are social behavior and temperament, and environmental effects. Cattle are social animals and hierarchy has a notable impact on feeding behavior, especially when access to feed is limited. Competition for feed causes a reduction in the average feeding time but increases feeding rate. Excitable animals visit the feeder more often and spend less time per meal. High environmental temperature affects feeding behavior, as heat-stressed cattle change their feeding pattern by concentrating the feeding events in crepuscular hours, leading to an increased risk of sub-acute ruminal acidosis. In conclusion, feeding behavior is a determinant feature for improving efficiency, productivity and welfare of dairy cattle. Routine assessment of feeding behavior allows monitoring of health and production status of dairy cattle at the individual and farm level, which is a useful tool to optimize the management of livestock.

Keywords: dairy cattle, feeding behavior, feed efficiency, productivity, welfare

INTRODUCTION

The study of feeding behavior in dairy cattle has received notable attention for its association with productivity and efficiency (1). Improved feed efficiency in dairy cattle is important because of its economic value, but also because of the increasing need to reduce waste associated with animal production (e.g., manure and enteric methane) and its impact on the environment. Because of the increased farm profitability and the reduced environmental impact associated with better efficiencies, research has devoted much effort toward studying strategies to improve feed efficiency. Besides productivity, feeding behavior has a bidirectional association with animal welfare. Some animal welfare-related problems, such as impaired health or pain, lead to changes in feeding behavior; whereas, changes in feeding behavior can lead to health problems. This review will focus on understanding the factors that regulate feeding behavior and its implications for productivity, while revising the bidirectional association between feeding behavior and dairy cattle welfare.

DRIVERS OF CATTLE FEEDING BEHAVIOR: BETWEEN APPETITE AND SATIETY

In 1985, Le Magnem (2) defined feeding behavior of an animal as the selection and ingestion of nutrients required for growth and maintenance. In ruminants, feeding is a predominant behavior and they spend a large proportion of the day feeding. A high-producing Holstein can eat more than 25 kg of dry matter in a day. The average time devoted to feeding may be as much as 12 h, distributed in several discrete feeding events or “meals” that are separated by periods of time longer than eating events (1). Cattle often show a crepuscular pattern in feeding activity, with clear peaks around dawn and dusk (3). In ruminants, feeding is followed by rumination, where the feed is fermented by ruminal microbiota, to make nutrients accessible. Both feeding and rumination are mutually necessary. However, there is an inhibitory relationship between feeding and ruminating motivations with preference for feeding behavior (4), that in a given scenario of a hungry cow with a need for rumination, she will always first eat rather than ruminate. It is clear that feeding without ruminating may not provide any benefit for the cow but this example is used to illustrate the importance of feeding over other crucial activities.

Appetite refers to the subjective desire to eat, sometimes due to hunger. The most obvious conditions that provoke hunger, and therefore stimulate eating, are energy deficit and weight loss induced by feed deprivation (2, 5). In cattle, feed deprivation or hunger is associated with an increase of ghrelin plasma concentrations which stimulate feed intake (6). In grazing cattle, longer periods of feed deprivation (fasting time) result in longer grazing bouts, higher intake rates and reductions in rumination time during the grazing period. This leads to more pronounced changes in rumen pH and higher rumen load (7).

Satiety is the state during which, from the end of one meal to the motivation for the next, an animal is not stimulated to eat. Satiation is reached after chewing and swallowing a minimum

quantity of feed, followed by its accumulation in the stomach and passage through the intestines. The filling during a meal achieves satiety through a negative feedback counteracting the initial motivation of the hunger. It is, therefore, a feedback function at several levels: oral, gastric, and post-ingestive (8). The quantity of feed that is necessary to reach satiety is highly variable and dependent on variables such as age, state of production and breed.

Feeding behavior is not only affected by homeostatic needs, like appetite or satiety, but also by hedonic and motivational factors associated with foods through experiences and expectations of rewards (9).

Motivation for feeding in ruminants is influenced by internal and external factors. External factors include food sensory characteristics and are considered as an incentive that influences feeding behavior in ruminants (9–11). Internal factors, like physiological and metabolic responses, may interact with sensory properties. For instance, energy sources could be sensed by nutrient sensors present in the tongue and along the gastrointestinal tract, like the sweet taste receptor, which is able to trigger hormone secretions that induce changes in satiety (12). To reinforce motivation, taste receptors are also able to trigger hedonic-reward responses through stimulation of opioid receptors from the hypothalamus and limbic structures (13). Changes in either internal or external factors might change the motivation, but nonetheless, none of them should be regarded as dominant (8).

The internal factors regulating feed intake (e.g., physiological stimulation of feed intake as a result of hunger) can be amplified through the positive sensory stimulation or palatability of the feed. Palatability has a major influence on feeding behavior in ruminants, and the sense of taste is highly developed in cattle (14, 15). Palatability has been considered as the interaction between pre- and post-ingestive information and the subsequent learning process, which is influenced by other several factors, such as genetic background, environmental conditions and social context (9, 10, 13, 16–18).

Sensory additives (flavors) are feed additives that could be included in the diet of animals to modulate the feeding behavior, mostly with the objective to enhance the palatability of feed and encourage feed intake. Taste and smell are the main senses associated with feed intake; therefore, flavors are aromatic and/or tasty substances that stimulate these senses and trigger feeding motivation. Feeding stimulation mostly results in higher dry matter intake (DMI) and higher milk yield (19). For instance, Migliorati et al. (20, 21) observed that dairy cows who received a flavored diet (aromatic sweetener) in the automatic milking system were attracted more to the feeder compared to control (number of visits to the feeder was increased). Merrill et al. (22) evaluated a flavor enhancer to improve forage palatability in lactating dairy cows and observed a tendency for greater DMI (+1.5 kg/d) and milk yield (+3.9 kg/d) in multiparous dairy cows.

Social behavior adds to feed components as an external factor regulating feeding behavior. For instance, social facilitation is a feeding motivation influencer, in which an animal's motivation to eat is stimulated by the sight and sound of other animals eating

(9). This phenomenon, initially described by Curtis and Houpt (23), suggest that when one cow eats, another is stimulated to eat as well, whether she is hungry or not. Therefore, the management of the feed bunk should consider social behavior when designing the optimal feeding management of the herd. The link between feeding management and social behavior relies on whether cows have free access (i.e., no competition) to feed affecting the total time spent eating and pattern of eating each day. Some authors consider that feeding management regulates eating behavior (24).

MONITORING FEEDING BEHAVIOR

Feeding behavior analyses the amount and distribution of feed intake. In 1999, Nielsen (25) proposed a methodology to analyse feeding behavior that can be applied in different species and considers six different measures: dry matter intake (DMI; kg/day), average intake per visit to the feeder (kg/visit), number of visits to the feeder (visits/day), time spent in the feeder (min/day), average time per visit (min/visit), and feeding rate (FR, g/min). These measures may not be applicable to assess feeding behavior in cattle on pasture. Instead, pasture DMI can be calculated based on the time spent grazing, the biting rate and the bite size, using the following function; pasture DMI = grazing time \times biting rate \times bite size (26). In 2007, Chapinal et al. (27) validated some of these variables (the frequency and the number of visits to the feeder and the average intake per visit) to study feeding behavior in dairy cattle. Since then, numerous studies have used these parameters to study the association between feeding behavior, productivity and, more recently, animal welfare. For example, in dairy cows the time spent eating daily increases during the first weeks of lactation (28), which confirms the finding of Kertz et al. (29) that the DMI increases progressively at the beginning of lactation for \sim 9 weeks, showing the relationship between feeding behavior and feed intake.

In recent years, numerous tools have been developed to monitor behavior in cows such as pedometers or electronic collars, which measure activity or feeding behavior, respectively (30). The jaw movement recorder (IGER) is used to monitor feeding behavior in grazing cattle (31) through a time-stamped record of bites and chews. Measurements commonly used to describe feeding behavior include frequency and duration of meals (25, 27). However, these data may be used to calculate indices like the average duration of meals, which has been proven very useful in predicting rumination changes in ruminal acidosis (32). If the feed intake is also known, it can be used to calculate the FR, which as later discussed in this review, can be directly associated with some health problems.

Sorting behavior has also received the attention of science researchers for its implications on nutrition and health of dairy cattle. Sorting behavior is usually assessed through the comparative analysis and weight between the offered diet and orts (33). Dairy cattle, selectively consume (sort for) the shorter, concentrate particles in their TMR, while selectively refusing (sort against) the longer, forage particles (34). In 1981, Campling and Morgan (35) suggested that cattle are adept at gathering

feed using their lips, teeth, and tongue and can select specific particles. Smaller particles (such as concentrate or pellets) can be consumed at a higher intake rate than longer particles (such as long, fibrous forages). Imbalanced nutrient intake and altered rumen fermentation as a result of sorting, can negatively affect digestion efficiency and production (36).

IMPACT OF FEEDING BEHAVIOR ON PRODUCTIVITY

Cattle feeding behavior has a significant impact on productivity (37, 38) and this is due to several reasons. First, an increase in the time spent eating facilitates chewing, reduces feed particle size, and increases digestibility (39). Second, a greater feeding time increases the production of saliva, which acts as a buffer over the rumen, decreasing acidity (40). It has also been suggested that by reducing the FR, the risk of metabolic problems such as sub-acute ruminal acidosis (SARA) and displaced abomasum is also reduced (41). In contrast, faster and more intense (high FR) meals facilitate the production of acid in the rumen, increasing the risk of acidosis (42, 43). Sorting behavior has also been identified as a behavior feature impacting productivity. Dairy cows receiving a mixed ration typically select in favor of short and fine particles and against longer forage ones (34, 44). This pattern may result in an imbalanced nutrient intake in relation to the formulated diet, having negative consequences on efficiency and production (45, 46). The combination of these (and possibly other) effects means that the impact of feeding behavior on productivity may be as important as feed intake. For instance, Shabi et al. (3) showed that the correlation between milk production (kg/day) and feeding behavior (time spent eating) is stronger ($r = 0.4$, $P = 0.01$) than the relationship between milk production and feed intake ($r = 0.308$, $P = 0.05$). Beyond milk production, feeding behavior has an effect on the milk quality, as demonstrated by the study of DeVries and Chevaux (47) in which there was a positive correlation between meal frequencies and the percentage of milk fat. Also, Macmillan et al. (48) found that an increase of feeding frequency increased milk fat. Other authors that have investigated this association could not confirm it; for example, Niu et al. (49) found no differences in milk fat composition between cows with high (2 times higher) feeding frequencies and cows with lower feeding frequencies. On the other hand, changes in feeding behavior are less likely to have an effect on milk protein as none of the previous studies found significant associations between the parameters (47–49). Based on the potential association between feeding behavior and milk quality, some studies have tried to implement dietary strategies to modify feeding behavior and improve milk quality traits. For instance, a study of grazing dairy cows in Chile found that supplementation with a flavor enhancer increased feeding time, FR and the ruminating time, which was associated with a higher milk production (kg) and percentage (%) of milk protein (50).

More efficient animals use less feed for maintenance, which increases the energy allocated to production (for example, growth or milk production). This not only leads to higher economic profitability but also to less waste products (manure, greenhouse

gases, etc.) emitted to the environment (51, 52). Knapp et al. (53) reviewed a list of measures that may offer the possibility to reduce greenhouse gas (GHG) emissions from dairy cattle and the improvement of feed efficiency appeared among the top three. For instance, increasing milk production per feed unit will dilute the methane cost associated with maintenance energy requirements. Digestibility is a key feature that determines feed efficiency (54) and efforts are made to improve it, including changes in the feeding behavior, as reported in previously mentioned studies. The association between feeding behavior and feed efficiency has already attracted notable attention in beef cattle, where it has been shown that eating behavior has a profound impact on efficiency. In beef cattle, Robinson and Oddy (55) found that feed efficiency had phenotypic correlations of 0.64, 0.45, and 0.51 with the time spent eating, daily frequency of meals, and the number of visits to the feeder, respectively. Similarly, in growing dairy heifers, Green et al. (56) evidenced that feed efficiency, measured by the residual feed intake (RFI), was moderately to highly correlated with DMI ($r = 0.54\text{--}0.74$), indicating that with the same level of production (i.e., growth), efficient cattle ate less than cattle considered inefficient. When comparing less (the lowest 10%) and more (the highest 10%) efficient cattle based on RFI, it was shown that efficient animals ate less frequently but for longer, had lower FR and spend less time at the feeder compared to less efficient cattle. Indeed, some studies suggest that efficient animals tend to spend less time feeding (57) which may have evolved as a mechanism for energy conservation. Conversely, more efficient animals can spend more time resting, thus using less energy for activities other than eating.

It is well-known that feed efficiency increases when consumption decreases due to limited access to feed (58, 59). The reason is that a greater feed intake increases the passage rate that, in turn, decreases feed digestibility. This effect is especially pronounced when the diet contains a high percentage of fiber; this is because fiber digestibility is highly influenced by its passage rate through the rumen, which determines the accessibility of the fibrolytic microbiota to rumen content. These results suggest that feed efficiency can be improved by stimulating shorter but more frequent meals and lesser (or lower) FR.

In addition to feed intake, rumination is also a key feeding behavior trait for proper digestive functioning in cattle. Rumination aims to make feed (especially forage) more accessible for bacteria that facilitate the fermentation of fiber and increase its digestibility. However, the association between the time a cow spends ruminating and feed intake is controversial. Krause et al. (60) found that this association was positive (in long particle feed); whereas, Schirmann et al. (61) saw that cows that spent more time ruminating showed lower feeding times and less DMI, when calculated in 2-h feeding intervals. In general, though, feed consumption and rumination are mutually exclusive, which could explain this negative correlation. Rumination time may also have an impact on milk production, probably as a result of the positive association between rumination and lying times (62, 63). Soriani et al. (64) calculated this association and found that ruminating time is positively correlated ($r = 0.36$) with milk production (kg) during the first weeks of lactation. In short, the impact of rumination on performance suggest that production

and efficiency are affected by not only the amount of feed eaten but also by the way that feed is consumed.

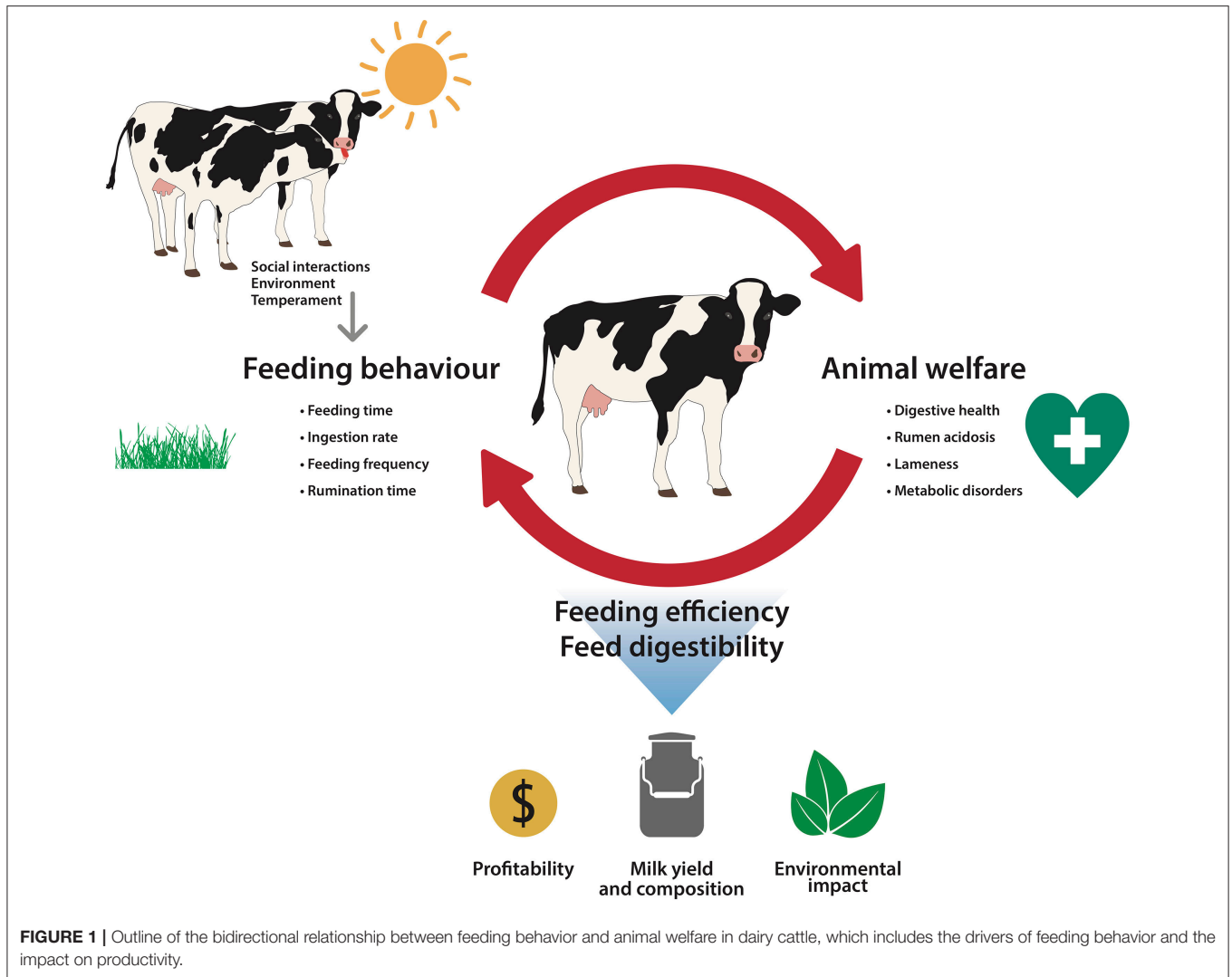
ASSOCIATION BETWEEN FEEDING BEHAVIOR AND WELFARE

The study of feeding behavior has attracted considerable interest in recent years not only as a reflection of parameters such as efficiency or productivity, as described above, but also associated with welfare issues. The evidence suggesting a close association between feeding behavior and animal welfare is growing. For instance, the well-known principle of the Five Freedoms, include freedom from hunger (and thirst) as a capital aspect to safeguard welfare in farm animals (65). Additionally, this association is a bidirectional process in which feeding behavior impacts some aspects of cattle welfare but at the same time, the welfare status of cattle can also modify feeding behavior. Therefore, as represented in **Figure 1**, the cause-effect relationship between feeding behavior and welfare can be reciprocal.

Feeding Behavior as a Consequence of Health and Welfare Problems

Any alteration of an animal's health status is often associated with changes in feeding behavior. In dairy cattle, this relationship has been used to identify health problems (32, 66). Previous studies are examples of how tools to monitor behavior, such as pedometers or electronic collars, can be used to identify sick animals in a quick and accurate manner. In the era of smart farming, this can be very valuable on dairies, as it may improve disease detection and facilitate adequate health treatments, which improves animal welfare and reduces production losses (67). The most widely known feeding behavior sign associated with illness is a decrease in feed intake. Some forms of illness likely reduce appetite, especially at the onset of disease. Fogsgaard et al. (68) reported that feeding behavior decreased when cows were suffering from mastitis. Huzzey et al. (69) found lower DMI during the first weeks post-partum for cows diagnosed with metritis. Bareille et al. (70) foresaw that clinical signs of lameness associated with hock and foot lesions, provoke a decrease in DMI of 5.6 and 6.4 kg at four and 5 days before it is diagnosed, respectively. This reduction in consumption is likely to decrease milk production by about 1.2 and 3.3 kg/day, respectively. The reason for this reduction in feed intake is that lameness is painful and lame cows are reluctant to move, even toward the feeding trough, causing a decrease in feed consumption (71).

In addition to feed intake, feeding pattern also changes during illness. Multiparous cows subsequently diagnosed with metritis or retained placenta tended to spend 5 or 10% less time feeding prepartum than healthy counterparts, respectively (72). According to Bareille et al. (70), cows diagnosed with ketosis reduced DMI by 7.5 Kg, on average, during lactation, which was associated with an average 45 min reduction of feeding time immediately before diagnosis. In 2010, von Keyserlingk and Weary (1) observed that, the week before calving, the likelihood of a cow to have severe mastitis increase 1.72 times per each 10-min decrease in feeding time and almost three times per each 1 kg



decrease in DMI. Besides intake and feeding time, other studies have shown that an increase of FR is a consequence of illness and lameness, likely as a mechanism to maintain intake (32, 73). Schirmann et al. (61) suggested that when cows feel sick, they are less able to compete successfully for access to the feed bunk, and thus use higher FR when they have access. A notorious example of this relationship is the time spent eating in lame cows. The pain associated with lameness reduces the time spent standing, including standing at the trough, which reduces the time spent eating and increases the FR (74). For example, Bach et al. (75) observed a 268–240 min/day reduction in total time eating when comparing severely lame vs. healthy cows. Similarly, González et al. (32) suggested that some cows can increase FR by two to three times during acute or chronic lameness.

Rumination time is related to the resting time and the health status of cows (76, 77). A decrease in rumination time, combined with the onset of clinical disease, has been previously described for lameness (78), mastitis (68, 79), and metabolic disturbances (76, 80). For instance, Schirmann et al. (61) and Kaufman

et al. (81) reported a decrease in rumination time for cows with subclinical ketosis during peripartum. Liboreiro et al. (82) confirmed this reduction from calving to 1 week postpartum for cows with subclinical ketosis. Changes in rumination time are also a reliable indicator of the time of calving, as there is a reduction of more than 50% of the time spent ruminating between 48 and 24 h before calving (64).

Feeding Behavior as a Potential Cause of Welfare Problems

In addition to the causal relationship between health problems and changes in feeding behavior described so far, there are some cases where changes in feeding behavior driven by external factors can increase the risk of disease. A paradigmatic example is the relationship between time spent eating and ruminal acidosis. Daily feed intake determines the production of acid while chewing determines the production of saliva [which acts as rumen buffer (83)]. Therefore, these two components of feeding

behavior (feed intake and chewing) during the day are closely related to pH and the acid-base balance in the rumen. Animals that are forced to spend less time feeding (by social competition, for example) often compensate for the time debit by eating faster. Such increases in FR may reduce salivation during feeding by 3–1 ml per g of DMI (84). Conversely, cattle with low FR chew feed more thoroughly; resulting in increased production of saliva, which increases the buffering capacity of the rumen. Thus, a greater time spent eating reduces the susceptibility to acidosis [both subclinical and clinical (85, 86)], and consequently, the occurrence of health problems associated with acidosis in dairy cows, such as laminitis and liver abscesses, would also be reduced (87).

Feed sorting is another example of feeding behavior that can result in health problems if certain conditions are met. Feed sorting in intensively fed lactating dairy cows may increase the risk of ruminal acidosis. Dairy cows receiving a TMR diet typically select short and fine particles (grain) and discriminate against longer forage ones (33, 34, 44). This pattern may result in a higher consumption of rapidly fermentable carbohydrates and lower effective fiber compared with the formulated diet, and it may result in lower ruminal pH (88). On the other hand, an increase in sorting for short and fine particles was associated with less time spent feeding (34), which has been previously identified as a risk factor for acidosis; nevertheless, in the same study feeding rate was positively correlated with sorting of long particles, and this observation disagreed with DeVries et al. (44), who observed that cows consume more quickly when receiving a ration containing a greater proportion of smaller particles. However, there are individual variations, with some animals being more susceptible to suffer ruminal acidosis than others, and these groups may have a different sorting pattern (89). These authors fed lactating dairy cows with high-grain diet and, depending on their acidosis index (severity of SARA), classified them in two groups, tolerant and susceptible animals to high-grain diet. Both groups sorted for short particles, but susceptible animals sorted to a greater extent. Also, susceptible animals sorted against long particles, whereas tolerant animals did not. Additionally, numerous studies suggest that typical patterns of feed sorting may be adjusted depending on the physiological status of the animal as a postingestive feedback mechanism (36). For example, various authors have noted alterations of feeding pattern in animals under ruminal acidosis, which modified typical preference for grain to more preference for long particles with higher content of physical effective fiber to attenuate the digestive upset (88, 90).

In brief, changes in feeding behavior may be both indicators and causes of health problems, especially for metabolic diseases such as ruminal acidosis and associated problems.

UNDERLYING WELFARE TRAITS AFFECTING FEEDING BEHAVIOR

Feeding behavior (regulated by the feedback between appetite and satiety) is the response to the homeostatic mechanism that motivates an animal to acquire nutrients. The duration of each

meal would be combined with the signals that originate from the animal's energy balance (body composition) and the time the animal spent eating to determine when the next meal occurs. These dynamic processes can; however, be modulated by factors such as feed accessibility (feeding space per animal), dominance and hierarchy (influenced by a cow's weight, age and size, among other factors), an individual's temperament and that of the pen mates, and environmental conditions (such as temperature).

Social Behavior and Temperament

Dairy cattle are social animals and are prone to establish dominance hierarchy, particularly when resources are limited such as at the feed bunk (91). The dominance rank determines the priority of access to resources such as feed (32). Dairy cattle reared in intensive systems have limited space availability per animal, which can exacerbate the effects of feed competition. In grazing systems, dominance also has an impact on feeding behavior and intake as dominant animals have priority access to the best quality feed (92). This could explain why dominant cows sometimes produce more milk than subordinate cows in grazing systems (93).

In intensive dairy systems, it is recommended that feeding space should be at least 0.6 m per dairy cow. However, even when space allowance is enough, some subordinate cows will still prefer to avoid proximity to dominant cows (94). Besides space availability, feed bunk design can also influence dominance behavior. According to Huzzey et al. (69), cows were displaced more frequently from a post-and-rail feed barrier, compared to a headlock barrier. Competition can increase in situations where a restricted feeding space converges with limited feed availability. This competition often results in shorter but quicker meals, increasing the FR and, consequently, the risk of acidosis in dairy cattle (95).

Social dominance is strongly correlated with a cow's age, body size, and seniority, which plays a key role in any existing, or newly formed, group of cows (96, 97). A higher dominance rank may lead to increased accessibility to feed with consequences on efficiency and productivity. In group housing, with no restrictions on accessing feed, dominants can often access feed more easily; whereas, subordinates may need to adapt their feeding behavior to accommodate bigger or more dominant animals. In dairy cattle, dominant animals displace subordinate cows from the feeder in order to show their preferred feeding patterns; whereas, subordinate animals must adjust their eating patterns in order to avoid conflicts with higher ranked cows (28, 93). Therefore, aggressive interactions and displacements at the feeder can influence feed intake, especially in subordinate cows. Galindo and Broom (98) identified a dominance trait (called displacement index), based on the number of times a cow displaces another, which determines the feeding time, showing that the most dominant individuals spend more time feeding. The positive impact of longer feeding times on productivity has already been mentioned in section Impact of Feeding Behavior on Productivity.

Social behavior can be managed through changes in husbandry and facilities, as feeding availability and space will affect social competition for feed. Considering the effects of

hierarchy, limited access to feed or reduced intake by subordinate animals could reduce feed efficiency when compared to dominant cows with unlimited access to feed. The reason for such an effect, as explained above, is a decrease in feed efficiency when feeding duration is lower and FR is higher. The opposite effect has been shown in higher dominance rank cows. The additional time for feeding used by more dominant individuals can increase salivary secretion, reduce the size of feed particles (40) and therefore be beneficial to rumen fermentation (85). This is likely to result in improved nutrient digestibility and feed efficiency. The negative effects of social competition for subordinate cows can be mitigated by providing greater feeding space and increase the frequency of feed deliveries to reduce competition between pen mates (99).

Temperament can also have a significant effect on feeding behavior. The term temperament refers to individual differences in behavioral and physiological traits that are consistent over time and contexts. Some of the temperament traits most commonly studied in farm animals are fearfulness, reactivity, docility and aggression (100). Temperament in cattle is mainly assessed by short-term tests of behavior in response to a standardized stimulus, such as handling, isolation or exposure to a novel object. Animals that are more likely to cope with those situations are considered to have a “good” temperament. A study by Llonch et al. (101) on beef cattle observed that temperamental animals (e.g., steers that displayed a high flight speed response in a handling test) visited the feeder more often and spent, on average, less time eating per meal, eating less feed per meal also. The same authors hypothesized that, at the feeding area, most temperamental cattle are more reactive to the presence of other pen mates, increasing the likelihood of feeding interruption (101). This would inevitably lead to more frequent but shorter visits to the feeder. Temperament implications on feed efficiency and productivity have been studied. For instance, Nkrumah et al. (37) showed that more temperamental steers (i.e., animals showing a greater flight speed once released from the chute) had a lower ADG whereas Llonch et al. (102) revealed a decrease in feed intake in animals showing a higher flight speed. It is plausible that both results are related and the slower growth rate of temperamental cattle is caused by their smaller feed intake. However, it is still not clear whether this leads to a reduction in productivity and further studies are needed to confirm a possible association between temperament, feeding behavior and productivity in dairy cattle.

Environmental Effects

One of the greatest threats for the welfare and productivity of dairy cattle associated with the environment is heat stress, caused by high environmental temperature and humidity. Heat stress is particularly relevant in dairy cattle since the effects on milk production and reproductive performance can be severe (103–105). The reduction in performance during heat stress has been commonly attributed to reduced DMI and a decreased availability of nutrients (103, 106). Changes in behavior and metabolic priorities markedly alters post-absorptive nutrient metabolism (107, 108). Heat stressed ruminants decrease their feed intake to reduce metabolic heat production and thus maintain a constant body temperature (109, 110). A consequence

of this reduction in feed consumption is, among others, the decrease of milk production (103). High-yield milking cows are very sensitive to heat stress with negative consequences in milk yield, milk fat and protein content, and health (104, 111). In addition, dairy cows change their normal feeding pattern to eat when the temperature is lower, i.e., at dawn and dusk (112), and the eating time is concentrated in shorter periods of the day. In addition to the previous changes, cows will also show preferences to eat concentrated feed instead of fiber (109). This preference is due to a lower metabolic production of heat associated with concentrate feed compared to fiber-rich feed (113). Both the increase in frequency of meals during crepuscular times and the preference for concentrated feed (associated with a reduced forage intake), leads to an increased risk of ruminal acidosis (114, 115). On the contrary, heat stress can be linked to improved digestibility. The reason for this result is that the reduction in DMI decreases the rate of passage through the rumen (109, 116), and therefore increases the retention time (112) and improves the digestibility of structural carbohydrates (117).

There are different strategies to mitigate the effect of heat stress in cattle. These strategies include provision of shade (118), increased ventilation, and the combination of ventilation (fans) and showers (sprinklers) to increase heat loss from the body (103). However, there may be situations when that these strategies are insufficient to relieve heat stress. An alternative strategy to reduce the effects of heat stress is to provide moderate cold drinking water. In a study with dairy cows under high temperatures, where drinking water was refrigerated (from 28 to 10°C), Milam et al. (119) reported a decrease in body temperature, an increase in feed intake and a higher milk production in cows that received refrigerated water.

In addition to alleviating heat stress by decreasing the thermal load, there are strategies to compensate the changes in feeding behavior as a response to heat stress. This alternative can be developed when the options to mitigate heat stress are limited or simply unfeasible. To mitigate decreases in feed intake while sustaining milk production, farm managers will often increase the energy density of the diet by reducing the proportion of neutral detergent fiber on dry matter basis (120), increasing the proportion of digestive fiber (121) and increasing the concentrate portion of the diet (122). However, these strategies should be applied with caution as a higher carbohydrate digestibility can increase the risk of SARA. In addition, if the concentrate proportion is higher, the increased catabolism with elevated protein digestion can lead to increased rectal temperatures (123), suggesting that protein digestion elevates internal temperature. Therefore, a higher proportion of highly fermentable carbohydrates in the diet to counteract the reduction in feed intake can have downstream consequences for cow welfare. In beef cattle, Mader et al. (124) suggested that limit feeding in events of heat load can alleviate the metabolic load associated with rumination that aggravates the effects of high climatic heat load. Dietary treatments can also be used to modify feeding behavior in heat stressed cattle. For instance, *Asparagus officinalis* (125), conjugated linoleic acids (126), yeast cultures (127), niacin (128), and citrus extract (129) have been used to minimize, with more or less success, the effects of heat

stress. However, most of them have inconsistent effects on feeding behavior and productivity and further research is needed to investigate the most effective heat stress dietary mitigation measures.

An extensive body of research has focused on how to mitigate the consequences of heat stress, especially from the production perspective. However, the reason why feeding behavior is affected during heat stress and how this can be tackled still needs to be addressed. Dietary treatments are promising strategies that can help modulate feeding behavior during heat stress, benefiting the animal's production requirements while prioritizing its optimal biological functioning.

CONCLUDING REMARKS

Feeding behavior can be measured using different criteria such as the frequency and duration of meals, feeding rate (g/min) and rumination time. Higher DMI has been associated with a lower feed efficiency. However, it can improve if cows spend a longer time feeding, reducing the feeding rate. More frequent and shorter meals are associated with a more efficient use of feed; whereas, an increased rumination time usually results in greater milk production. Sorting behavior leads to imbalanced nutrient intake and altered rumen fermentation, resulting in impaired digestion efficiency.

Changes in feeding behavior can assist in identifying health problems such as acidosis or lameness. A reduction in rumination time is a reliable indicator of health problems. An increase in meal size or in sorting for small particles may increase the risk of ruminal acidosis, which can facilitate a higher incidence of lameness.

The natural behavior of cattle based on social hierarchy within groups has a significant impact on feeding behavior, especially

in situations of limited access to feed. The competition for feed causes a reduction in average meal duration and increased FR (g/min). Dominant animals with *ad libitum* access to feed eat a larger amount of dry matter than subordinate individuals, causing a reduction in feed efficiency due to a decreased retention time. However, the opposite effect on feed efficiency is observed if they also spend longer time eating due to an increased production of saliva and the resulting improvement in feed digestibility. Providing sufficient space for cows to express feeding behavior at their will, can improve feed efficiency. Heat stress has a significant effect on feeding behavior as it reduces feed intake and alters the feeding pattern, increasing the risk of ruminal acidosis.

Research and innovation in feeding behavior can bring advances in animal welfare and production efficiency. Of especial relevance are feeding behavior strategies that can improve both the welfare of farm animals and their feeding efficiency, which inevitably reduces the impact of dairy cattle on the environment.

AUTHOR CONTRIBUTIONS

PL, GT, II, FB, and XM contributed to the concept of this paper. PL, MB, and GT carried out the literature search and compiled the articles. PL, EM, and MB wrote the manuscript. All authors contributed to the manuscript and approved the final version of the manuscript.

FUNDING

PL received support from the Tecniospring programme (TECSPR15-1-0040) of ACCIÓ funded by the Generalitat de Catalunya and the Marie Curie Cofund Fellowship Program within the 7th Framework Programme for Research and Technological Development of the European Commission.

REFERENCES

- Von Keyserlingk MA, Weary DM. Review: Feeding behaviour of dairy cattle: Measures and applications. *Can J Anim Sci.* (2010) 90:303–9. doi: 10.4141/CJAS09127
- Le Magnem J. *Hunger*. Cambridge: Cambridge University Press (1985).
- Shabi Z, Murphy MR, Moallem U. Within-day feeding behavior of lactating dairy cows measured using a real-time control system. *J Dairy Sci.* (2005) 88:1848–54. doi: 10.3168/jds.S0022-0302(05)72859-9
- Metz JHM. *Time Patterns of Feeding and Rumination in Domestic Cattle*. Dissertation/doctoral thesis. University of Wageningen, Wageningen (1975).
- Wredle E, Munksgaard L, Spörndly E. Training cows to approach the milking unit in response to acoustic signals in an automatic milking system during the grazing season. *Appl Anim Behav Sci.* (2006) 101:27–39. doi: 10.1016/j.applanim.2006.01.004
- Herrnstein RJ. The evolution of behaviorism. *Am Psychol.* (1977) 32:593–603. doi: 10.1037/0003-066X.32.8.593
- Chilibroste P, Soca P, Mattiauda DA, Bentancur O, Robinson PH. Short term fasting as a tool to design effective grazing strategies for lactating dairy cattle: a review. *Aust J Exper Agric.* (2007) 47:1075–84. doi: 10.1071/EA06130
- Toates FM. *Motivational Systems*. Cambridge: Cambridge University Press (2009).
- Ginane C, Bonnet M, Baumont R, Revell DK. Feeding behaviour in ruminants: a consequence of interactions between a reward system and the regulation of metabolic homeostasis. *Anim Prod Sci.* (2015) 55:247–60. doi: 10.1071/AN14481
- Ginane C, Baumont R, Favreau-Peigné A. Perception and hedonic value of basic tastes in domestic ruminants. *Physiol Behav.* (2011) 104:666–74. doi: 10.1016/j.physbeh.2011.07.011
- Favreau-Peigné A, Baumont R, Ginane C. Food sensory characteristics: their unconsidered roles in the feeding behaviour of domestic ruminants. *Animal* (2013) 7:806–13. doi: 10.1017/S1751731112002145
- Roura E, Foster SR. Nutrient-sensing biology in mammals and birds. *Annu Rev Anim Biosci.* (2018) 6:197–225. doi: 10.1146/annurev-animal-030117-014740
- Montoro C, Ipharraguerre IR, Bach A. Blocking opioid receptors alters short-term feed intake and oro-sensorial preferences in weaned calves. *J Dairy Sci.* (2012) 95:2531–9. doi: 10.3168/jds.2011-5053
- Albright JL. Feeding behaviour of dairy cattle. *J Dairy Sci.* (1993) 76:485–98. doi: 10.3168/jds.S0022-0302(93)77369-5
- Roura E, Humphrey B, Tedó G, Ipharraguerre I. Unfolding the codes of short-term feed appetite in farm and companion animals. A comparative oronasal nutrient sensing biology review. *Can J Anim Sci.* (2008) 88:535–58. doi: 10.4141/CJAS08014
- Forbes JM and Provenza FD. Integration of learning and metabolic signals into a theory of dietary choice and food intake. In: Cronje PB, editor. *Ruminant Physiology: Digestion, Metabolism, Growth and Reproduction*. Wallingford: CAB International (2000) p. 3–19.

17. Brondel L, Cabanac M. Alliesthesia in visual and auditory sensations from environmental signals. *Physiol Behav.* (2007) 91:196–201. doi: 10.1016/j.physbeh.2007.02.009
18. Forbes JM. Palatability: principles, methodology and practice for farm animals. *CAB Rev Persp Agrc Vet Sci Nutr Nat Res.* (2010) 5:1–15. doi: 10.1079/PAVSNNR20105052
19. Roura E, Ossensi C, Mantovani R, Bailoni L. Development of a quick method of evaluating flavour preferences in concentrates for lactating cows. In: *Proceedings of the European Association for Animal Production.* Uppsala (2005). p. 147.
20. Migliorati L, Speroni M, Lolli S, Calza F. Effect of concentrate feeding on milking frequency and milk yield in an automatic milking system. *Ital J Anim Sci.* (2005) 4:221–3. doi: 10.4081/ijas.2005.2s.221
21. Migliorati L, Speroni M, Stelletta C, Pirlo G. Influence of feeding flavouring-appetizing substances on activity of cows in an automatic milking system. *Ital J Anim Sci.* (2009) 8:417–9. doi: 10.4081/ijas.2009.s2.417
22. Merrill C, Windle MC, Souza WF, Ipharraguerre IR, Kung L. The evaluation of a flavor enhancer on intake and production of high producing lactating dairy cows. *J Dairy Sci.* (2013) 91(E-Suppl. 1):424.
23. Curtis, SE and Houpt KA. Animal ethology: its emergence in animal science. *J Anim Sci.* (1983) 57:234–47.
24. Beauchemin KA. Invited review: current perspectives on eating and rumination activity in dairy cows. *J Dairy Sci.* (2018) 101:4762–84. doi: 10.3168/jds.2017-13706
25. Nielsen BL. On the interpretation of feeding Behaviour Measures and the use of feeding rate as an indicator of social constraint. *Appl Anim Behav Sci.* (1999) 63:79–91. doi: 10.1016/S0168-1591(99)00003-9
26. Bargo F, Muller LD, Kolver ES, Delahoy JE. Invited review: Production and digestion of supplemented dairy cows on pasture. *J Dairy Sci.* (2003) 86:1–42. doi: 10.3168/jds.S0022-0302(03)73581-4
27. Chapinal N, Veira DM, Weary DM, von Keyserlingk MAG. Technical note: validation of a system for monitoring and feeding single drinking behaviour and intake in group-Housed cattle. *J Dairy Sci.* (2007) 90:5732–6. doi: 10.3168/jds.2007-0331
28. DeVries TJ, von Keyserlingk MAG, Weary DM. Effect of feeding space on the inter-cow distance, aggression, and feeding behaviour of free-stall housed lactating dairy cows. *J Dairy Sci.* (2004) 87:1432–8. doi: 10.3168/jds.S0022-0302(04)73293-2
29. Kertz AF, Reutzel LF, Thomson GM. Dry matter intake from parturition to midlactation. *J Dairy Sci.* (1991) 74:2290–5. doi: 10.3168/jds.S0022-0302(91)78401-4
30. Frost AR, Schofield CP, Beaulah SA, Mottram TT, Lines JA, Wathes CM. A review of livestock and the need for integrated systems. *Comp Electron Agric.* (1997) 17:139–59. doi: 10.1016/S0168-1699(96)01301-4
31. Bargo F, Muller LD, Delahoy JE, Cassidy TW. Milk response to concentrate supplementation of high producing dairy cows grazing at two pasture allowances. *J Dairy Sci.* (2002) 85:1777–92. doi: 10.3168/jds.S0022-0302(02)74252-5
32. González LA, Tolkamp BJ, Coffey MP, Ferret A, Kyriazakis I. Changes in feeding behaviour as possible indicators for the automatic monitoring of health disorders in dairy cows. *J Dairy Sci.* (2008) 91:1017–28. doi: 10.3168/jds.2007-0530
33. Leonardi C, Armentano LE. Effect of quantity, quality, and length of alfalfa hay on selective consumption by dairy cows. *J Dairy Sci.* (2003) 86:557–64. doi: 10.3168/jds.S0022-0302(03)73634-0
34. Greter AM, DeVries TJ. Effect of feeding amount on the feeding and sorting behaviour of lactating dairy cattle. *Can J Anim Sci.* (2011) 91:47–54. doi: 10.4141/CJAS10067
35. Campling RC, Morgan CA. Eating behavior of housed dairy cow - a review. *Dairy Sci Abstr.* (1981) 43:57–63.
36. Miller-Cushon EK, DeVries TJ. Feed sorting in dairy cattle: Causes, consequences, and management. *J Dairy Sci.* (2017) 100:4172–83. doi: 10.3168/jds.2016-11983
37. Nkrumah JD, Crews DH Jr, Basarab JA, Price MA, Okine EK, Wang Z, et al. Genetic and phenotypic relationships of feeding behaviour and temperament with performance, feed efficiency, ultrasound, and carcass merit of beef cattle. *J Anim Sci.* (2007) 85:2382–90. doi: 10.2527/jas.2006-657
38. Kelly AK, McGee M, Crews DH Jr, Fahey AG, Wylie AR, Kenny DA. Effect of divergence in residual feed intake on feeding behavior, blood metabolic variables, and body composition traits in growing beef heifers. *J Anim Sci.* (2010) 88:109–23. doi: 10.2527/jas.2009-2196
39. Aikman PC, Reynolds CK, Beever DE. Diet digestibility, rate of passage, and eating and rumination behavior of Jersey and Holstein cows. *J Dairy Sci.* (2008) 91:1103–14. doi: 10.3168/jds.2007-0724
40. Beauchemin KA, Eriksen L, Nørgaard P, Rode LM. Short communication: salivary secretion during meals in lactating dairy cattle. *J Dairy Sci.* (2008) 91:2077–81. doi: 10.3168/jds.2007-0726
41. Shaver RD. Nutritional risk factors in the etiology of left displaced abomasum in dairy cows: a review. *J Dairy Sci.* (1997) 80:2449–53. doi: 10.3168/jds.S0022-0302(97)76197-6
42. Allen MS. Relationship between fermentation acid production in the rumen and the requirement for physically effective fiber. *J Dairy Sci.* (1997) 80:1447–62. doi: 10.3168/jds.S0022-0302(97)76074-0
43. Fanning K, Milton T, Klopfenstein TJ, Jordan DJ, Cooper R, Parrot C. Effects of rumensin level and bunk management strategy on finishing steers. *Nebraska Beef Cattle Rep.* (1999) 71A:41–4.
44. DeVries TJ, Beauchemin KA, von Keyserlingk MAG. Dietary forage concentration affects the feed sorting behavior of lactating dairy cows. *J Dairy Sci.* (2007) 90:5572–79. doi: 10.3168/jds.2007-0370
45. Miller-Cushon EK, DeVries TJ. Short communication: associations between feed push-up frequency, feeding and lying behavior, and milk yield and composition of dairy cows. *J Dairy Sci.* (2017) 100:2213–18. doi: 10.3168/jds.2016-12004
46. Sova AD, LeBlanc SJ, McBride BW, DeVries TJ. Associations between herd-level feeding management practices, feed sorting, and milk production in freestall dairy farms. *J Dairy Sci.* (2013) 96:4759–70. doi: 10.3168/jds.2013-6679
47. DeVries TJ, Chevaux E. Modification of the feeding behavior of dairy cows through live yeast supplementation. *J Dairy Sci.* (2014) 97:6499–510. doi: 10.3168/jds.2014-8226
48. Macmillan K, Gao X, Oba M. Increased feeding frequency increased milk fat yield and may reduce the severity of subacute ruminal acidosis in higher-risk cows. *J Dairy Sci.* (2017) 100:1045–54. doi: 10.3168/jds.2016-11337
49. Niu M, Ying Y, Bartell PA, Harvatine KJ. The effects of feeding time on milk production, total-tract digestibility, and daily rhythms of feeding behavior and plasma metabolites and hormones in dairy cows. *J Dairy Sci.* (2014) 97:7764–76. doi: 10.3168/jds.2014-8261
50. Nannig P, Pulido RG, Ruiz-Albarrán M, Bargo F, Tedó G, Palladino RA. A sensory additive alters grazing behavior and increases milk response to concentrate supplementation in dairy cows. *Livest Sci.* (2018). doi: 10.1016/j.livsci.2018.04.014
51. Capper JL, Cady RA, Bauman DE. The environmental impact of dairy production: 1944 compared with 2007. *J Anim Sci.* (2009) 87:2160–7. doi: 10.2527/jas.2009-1781
52. Capper JL. The environmental impact of beef production in the United States: 1977 compared with 2007. *J Anim Sci.* (2011) 89:4249–61. doi: 10.2527/jas.2010-3784
53. Knapp JR, Laur GL, Vadas PA, Weiss WP, Tricarico JM. Invited review: Enteric methane in dairy cattle production: Quantifying the opportunities and impact of reducing emissions. *J Dairy Sci.* (2014) 97:3231–61. doi: 10.3168/jds.2013-7234
54. Pinares-Patiño CS, Waghorn GC, Machmüller A, Vlaming B, Molano G, Cavanagh A, et al. Methane emissions and digestive physiology of non-lactating dairy cows fed pasture forage. *Can J Anim Sci.* (2007) 87:601–13. doi: 10.4141/CJAS06023
55. Robinson DL, Oddy VH. Genetic parameters for feed efficiency, fatness, muscle area and feeding behaviour of feedlot finished beef cattle. *Livest Prod Sci.* (2004) 90:255–70. doi: 10.1016/j.livprodsci.2004.06.011
56. Green TC, Jago JG, Macdonald KA, Waghorn GC. Relationships between residual feed intake, average daily gain, and feeding behavior in growing dairy heifers. *J Dairy Sci.* (2013) 96:3098–107. doi: 10.3168/jds.2012-6087
57. Golden JW, Kerley MS, Kolath WH. The relationship of feeding behavior to residual feed intake to crossbred Angus steers fed traditional and no-roughage diets. *J Anim Sci.* (2008) 86:180–6. doi: 10.2527/jas.2005-569

58. Tyrrell HF, Moe PW. Effect of intake on digestive efficiency. *J Dairy Sci.* (1975) 58:1151–63. doi: 10.3168/jds.S0022-0302(75)84694-7
59. Colucci PE, Chase LE, Van Soest PJ. Feed intake, apparent diet digestibility, and rate of particulate passage in dairy cattle. *J Dairy Sci.* (1982) 65:1445–56. doi: 10.3168/jds.S0022-0302(82)82367-9
60. Krause KM, Combs DK, Beauchemin KA. Effects of forage particle size and grain fermentability in midlactation cows. II. Ruminal pH and chewing activity. *J Dairy Sci.* (2002) 85:1947–57. doi: 10.3168/jds.S0022-0302(02)74271-9
61. Schirmann K, Chapinal N, Weary DM, Heuwieser W, von Keyserlingk MAG. Rumination and its relationship to feeding and lying behaviour in Holstein dairy cows. *J Dairy Sci.* (2012) 95:3212–17. doi: 10.3168/jds.2011-4741
62. Fregonesi JA, Tucker CB, Weary DM. Overstocking reduces lying time in dairy cows. *J Dairy Sci.* (2007) 90:3349–54. doi: 10.3168/jds.2006-794
63. Beauchemin KA. Ingestion and mastication of feed by dairy cattle. *Vet Clin North Am Food Anim Pract.* (1991) 7:439–63. doi: 10.1016/S0749-0720(15)30794-5
64. Soriani N, Trevisi E, Calamari L. Relationships between rumination time, metabolic conditions, and health status in dairy cows during the transition period. *J Anim Sci.* (2012) 90:4544–54. doi: 10.2527/jas.2012-5064
65. Farm Animal Welfare Council (FAWC). *Second Report on Priorities for Research and Development in Farm Animal Welfare.* London: Ministry of Agriculture, Fisheries and Food (1993).
66. Weary DM, Huzzey JM, von Keyserlingk MAG. Board-invited review: Using behavior to predict and identify ill health in animals. *J Anim Sci.* (2009) 87:770–7. doi: 10.2527/jas.2008-1297
67. Stone AE, Jones BW, Becker CA, Bewley JM. Influence of breed, milk yield, and temperature-humidity index on dairy cow lying time, neck activity, reticulorumen temperature, and rumination behavior. *J Dairy Sci.* (2017) 100:2395–403. doi: 10.3168/jds.2016-11607
68. Fogsgaard KK, Røntved CM, Sørensen P, Herskin MS. Sickness behavior in dairy cows during *Escherichia coli* mastitis. *J Dairy Sci.* (2012) 95:630–8. doi: 10.3168/jds.2011-4350
69. Huzzey JM, Veira DM, Weary DM, von Keyserlingk MAG. Prepartum behavior and dry matter intake identify dairy cows at risk for metritis. *J Dairy Sci.* (2007) 90:3220–33. doi: 10.3168/jds.2006-807
70. Bareille N, Beaudeau F, Billon S, Robert A, Favardin P. Effects of health disorders on feed intake and milk production in dairy cows. *Livest Prod Sci.* (2003) 83:53–62. doi: 10.1016/S0301-6226(03)00040-X
71. Hassall SA, Ward WR, Murray RD. Effects of lameness on the behaviour of cows during the summer. *Vet Rec.* (1993) 132:578–80.
72. Luchterhand KM, Silva PR, Chebel RC, Endres MI. Association between prepartum feeding behavior and periparturient health disorders in dairy cows. *Front Vet Sci.* (2016) 3:65. doi: 10.3389/fvets.2016.00065
73. Norring M, Häggman J, Simojoki H, Tamminen P, Winckler C, Pastell M. Short communication: Lameness impairs feeding behaviour of dairy cows. *J Dairy Sci.* (2014) 97:4317–21. doi: 10.3168/jds.2013-7512
74. Cook NB, Nordlund KV, Oetzel GR. Environmental influences on claw horn lesions associated with laminitis with subacute ruminal acidosis in dairy cows. *J Dairy Sci.* (2004) 87:E36–46. doi: 10.3168/jds.S0022-0302(04)70059-4
75. Bach A, Dinarés M, Devant M, Carré X. Associations between lameness and production, feeding and milking attendance of Holstein cows milked with an automatic milking system. *J Dairy Res.* (2007) 74:40–6. doi: 10.1017/S0022029906002184
76. Hansen SS, Norgaard P, Pedersen C, Jørgensen RJ, Mellau LSB, Enemark JD. The effect of subclinical hypo-calcemia induced by EDTA.Na2 on the feed intake and chewing activity of dairy cows. *Vet Res Commun.* (2003) 27:193–205. doi: 10.1023/A:1023340506782
77. Radostits O, Gay C, Hinchcliff K, Constable P. *Veterinary Medicine.* Philadelphia, PA: Elsevier Saunders (2007).
78. Miguel-Pacheco GG, Kaler J, Remnant J, Cheyne L, Abbott C, French AP, et al. Behavioural changes in dairy cows with lameness in an automatic milking system. *Appl Anim Behav Sci.* (2014) 150:1–8. doi: 10.1016/j.applanim.2013.11.003
79. Siivonen J, Taponen S, Hovinen M, Pastell M, Lensink BJ, Pyörälä S, et al. Impact of acute clinical mastitis on cow behavior. *Appl Anim Behav Sci.* (2011) 132:101–6. doi: 10.1016/j.applanim.2011.04.005
80. DeVries TJ, Beauchemin KA, Dohme F, Schwartzkopf-Genswein KS. Repeated ruminal acidosis challenges in lactating dairy cows at high and low risk for developing acidosis: feeding, ruminating, and lying behavior. *J Dairy Sci.* (2009) 92:5067–78. doi: 10.3168/jds.2009-2102
81. Kaufman EI, LeBlanc SJ, McBride BW, Duffield TF, DeVries TJ. Association of rumination time with subclinical ketosis in transition dairy cows. *J Dairy Sci.* (2016) 99:5604–18. doi: 10.3168/jds.2015-10509
82. Liboreiro DN, Machado KS, Silva PR, Maturana MM, Nishimura TK, Brandão AP, et al. Characterization of peripartum rumination and activity of cows diagnosed with metabolic and uterine diseases. *J Dairy Sci.* (2015) 98:6812–27. doi: 10.3168/jds.2014-8947.
83. Beauchemin KA, McAllister TA, Dong Y, Farr BI, Cheng KJ. Effects of mastication on digestion of whole cereal grains by cattle. *J Anim Sci.* (1994) 72:236–46.
84. Maekawa M, Beauchemin KA, Christensen DA. Effect of concentrate level and feeding management on chewing activities, saliva production, and ruminal pH of lactating dairy cows. *J Dairy Sci.* (2002) 85:1165–75. doi: 10.3168/jds.S0022-0302(02)74179-9
85. Owens FN, Secrist DS, Hill WJ, Gill DR. Acidosis in cattle: a review. *J Anim Sci.* (1998) 76:275–86.
86. Streeter MN, Branine M, Whitley E, McCollum FT. Feeding behaviour of feedlot cattle: does behaviour change with health status, environmental conditions and performance level? In: *Proceedings of the Plains Nutrition Council Spring Conference.* San Antonio, TX (1999), p. 36–47.
87. Plaizier JC, Krause DO, Gozho GN, McBride BW. Subacute ruminal acidosis in dairy cows: the physiological causes, incidence and consequences. *Vet J.* (2008) 176:21–31. doi: 10.1016/j.tvjl.2007.12.016
88. DeVries TJ, Dohme F, Beauchemin KA. Repeated ruminal acidosis challenges in lactating dairy cows at high and low risk for developing acidosis: feed sorting. *J Dairy Sci.* (2008) 91:3958–67. doi: 10.3168/jds.2008-1347
89. Gao X, Oba M. Relationship of severity of subacute ruminal acidosis to rumen fermentation, chewing activities, sorting behavior, and milk production in lactating dairy cows fed a high-grain diet. *J Dairy Sci.* (2014) 97:3006–16. doi: 10.3168/jds.2013-7472
90. Keunen JE, Plaizier JC, Kyriazakis L, Duffield TF, Widowski TM, Lindinger MI, et al. Effects of a subacute ruminal acidosis model on the diet selection of dairy cows. *J Dairy Sci.* (2002) 85:3304–13. doi: 10.3168/jds.S0022-0302(02)74419-6
91. Grant RJ, Albright JL. Feeding behavior and management factors during the transition period in dairy cattle. *J Anim Sci.* (1995) 73:2791–803.
92. Barroso FG, Alados CL, Boza J. Social hierarchy in the domestic goat: Effect on food habits and production. *Appl Anim Behav Sci.* (2000) 69:35–53. doi: 10.1016/S0168-1591(00)00113-1
93. Reinhardt V. Social rank order and milking order in cows. *Z Tierpsychol.* (1973) 32:281–92.
94. Rioja-Lang FC, Roberts DJ, Healy SD, Lawrence AB, Haskell MJ. Dairy cow feeding space requirements assessed in a Y-maze choice test. *J Dairy Sci.* (2012) 95:3954–60. doi: 10.3168/jds.2011-4962
95. Olofsson J. Total Competition for mixed diets fed for ad libitum intake using one or four cows per feeding station. *J Dairy Sci.* (1999) 82:69–79. doi: 10.3168/jds.S0022-0302(99)75210-0
96. Dickson DP, Barr GR, Johnson LP, Wiekert DA. Social dominance and temperament of Holstein cows. *J Dairy Sci.* (1970) 53:904–7. doi: 10.3168/jds.S0022-0302(70)86316-0
97. Šárová R, Špinka M, Stěhulová I, Ceacero F, Šimečková M, Kotrba R. Pay respect to the elders: age, more than body mass, determines dominance in female beef cattle. *Anim Behav.* (2013) 86:1315–23. doi: 10.1016/j.anbehav.2013.10.002
98. Galindo F, Broom DM. The social relationships between behaviour of dairy cows and the occurrence of lameness in three herds. *Res Vet Sci.* (2000) 69:75–9. doi: 10.1053/rvsc.2000.0391
99. González LA, Manteca X, Calsamiglia S, Schwartzkopf-Genswein KS, Ferret A. Ruminal acidosis in feedlot cattle: Interplay Between feed ingredients, rumen function and feeding behaviour (a review). *Anim Feed Sci Technol.* (2012) 172:66–79. doi: 10.1016/j.anifeeds.2011.12.009
100. Finkemeier MA, Langbein J, Puppe B. Personality research in mammalian farm animals: concepts, measures, and relationship to welfare. *Front Vet Sci.* (2018) 5:131. doi: 10.3389/fvets.2018.00131

101. Llonch P, Somarriba M, Duthie CA, Troy S, Roehe R, Rooke J. Temperament and dominance relate to feeding behaviour and activity in beef cattle: implications for performance and methane emissions. *Animal* (2018) 2:1–10. doi: 10.1017/S1751731118000617
102. Llonch P, Somarriba M, Duthie CA, Haskell MJ, Rooke JA, Troy S. Association of temperament and acute stress responsiveness with productivity, feed efficiency, and methane emissions in beef cattle: an observational study. *Front Vet Sci.* (2016) 3:43. doi: 10.3389/fvets.2016.00043
103. West JW. Effects of heat-stress on production in dairy cattle. *J Dairy Sci.* (2003) 86:2131–44. doi: 10.3168/jds.S0022-0302(03)73803-X
104. Bernabucci U, Lacetera N, Baumgard LH, Rhoads RP, Ronchi B, Nardone A. (2010). Metabolic and hormonal acclimation to heat stress in domesticated ruminants. *Animal* (2010) 4:1167–83. doi: 10.1017/S17517311100090X
105. Polsky L, von Keyserlingk MAG. Invited review: effects of heat stress on dairy cattle welfare. *J Dairy Sci.* (2017) 100:8645–57. doi: 10.3168/jds.2017-12651
106. Allen JD, Hall LW, Collier RJ, Smith JF. Effect of core body temperature, time of day, and climate conditions on behavioral patterns of lactating dairy cows experiencing mild to moderate heat stress. *J Dairy Sci.* (2015) 98:118–27. doi: 10.3168/jds.2013-7704
107. Cook NB, Mentink RL, Bennett TB, Burgi K. The effect of heat stress and lameness on time budgets of lactating dairy cows. *J Dairy Sci.* (2007) 90:1674–82. doi: 10.3168/jds.2006-634
108. Rhoads RP, Baumgard LH, Suagee JK, Sanders SR. Nutritional interventions to alleviate the negative consequences of heat stress. *Adv Nutr.* (2013) 4:267–76. doi: 10.3945/an.112.003376
109. Bernabucci U, Lacetera N, Danieli PP, Bani P, Nardone A, Ronchi B. Influence of different periods of exposure to hot environment on rumen function and diet digestibility in sheep. *Int J Biometeorol.* (2009) 53:387–95. doi: 10.1007/s00484-009-0223-6
110. O'Brien MD, Rhoads RP, Sanders SR, Duff GC, Baumgard LH. Metabolic adaptations to heat stress in growing cattle. *Dom Anim Endocrinol.* (2010) 38:86–94. doi: 10.1016/j.domaniend.2009.08.005
111. Rhoads ML, Rhoads RP, VanBaale MJ, Collier RJ, Sanders SR, Weber WJ, et al. Effects of heat stress and plane of nutrition on lactating Holstein cows: I. Production, metabolism, and aspects of circulating somatotropin. *J Dairy Sci.* (2009) 92:1986–97. doi: 10.3168/jds.2008-1641
112. Schneider PL, Beede DK, Wilcox CJ. Nycterohemeral patterns of acid-base status, mineral concentrations and digestive function of lactating cows in a natural or chamber heat stress environments. *J Anim Sci.* (1988) 66:112–25.
113. Lu, CD. Effects of heat stress on goat production. *Small Rum Res.* (1989) 2:151–62. doi: 10.1016/0921-4488(89)90040-0
114. Collier RJ, Collier JL, Rhoads RP, Baumgard LH. Invited review: Genes involved in the bovine heat stress response. *J Dairy Sci.* (2008) 91:445–54. doi: 10.3168/jds.2007-0540
115. Kadzere CT, Murphy MR, Silanikove N, Maltz E. Heat stress in lactating dairy cows: a review. *Livest Prod Sci.* (2002) 77:59–91. doi: 10.1016/S0301-6226(01)00330-X
116. Bernabucci U, Bani P, Ronchi B, Lacetera B, Nardone A. Influence of short- and long-term exposure to a hot environment on ruminal passage rate and diet digestibility by Friesian heifers. *J Dairy Sci.* (1999) 82:967–73. doi: 10.3168/jds.S0022-0302(99)75316-6
117. Silanikove N. Effects of water scarcity and hot environment on appetite and digestion in ruminants: a review. *Livest Prod Sci.* (1992) 30:175–94. doi: 10.1016/S0301-6226(06)80009-6
118. Kendall PE, Nielsen PP, Webster JR, Verkerk GA, Littlejohn RP, Matthews LR. The effects of providing shade to lactating dairy cows in a temperate climate. *Livest Sci.* (2006) 103:148–57. doi: 10.1016/j.livsci.2006.02.004
119. Milam KZ, Coppock CE, West JW, Lanham JK, Nave DH, Labore JM, et al. Effects of drinking water temperature on production in lactating Holstein cows in summer. *J Dairy Sci.* (1986) 69:1013–9. doi: 10.3168/jds.S0022-0302(86)80496-9
120. Adin G, Solomon R, Shoshani E, Flamenbaum I, Nikbachat M, Yosef E, et al. Heat production, eating behavior and milk yield of lactating cows fed two rations differing in roughage content and digestibility under heat load conditions. *Livest Sci.* (2008) 119:145–53. doi: 10.1016/j.livsci.2008.03.012
121. West JW. Nutritional strategies for managing the heat-stressed dairy cow. *J Anim Sci.* (1999) 77:21–35.
122. Renaudeau D, Collin A, Yahav S, De Basilio V, Gourdiere JL, Collier RJ. Adaptation to hot climate and strategies to alleviate heat stress in livestock production. *Animal* (2012) 6:707–28. doi: 10.1017/S1751731111002448
123. Hassan A, Roussel JD. Effect of protein concentration in the diet on blood composition and productivity of lactating Holstein cows under thermal stress. *J Agric Sci.* (1975) 85:409–15. doi: 10.1017/S0021859600062286
124. Mader TL, Holt SM, Hahn GL, Davis MS, Spiers DE. Feeding strategies for managing heat load in feedlot cattle. *J Anim Sci.* (2002) 80:2373–82. doi: 10.1093/ansci/80.9.2373
125. Ominski KH, Wittenberg KM, Kennedy AD, Moshtaghi-Nia SA. Physiological and production responses when feeding *Aspergillus oryzae* to dairy cows during short-term, moderate heat stress. *Anim Sci.* (2003) 77:485–90. doi: 10.1017/S1357729800054424
126. Moore CE, Kay JK, Collier RJ, Vanbaale MJ, Baumgard LH. Effect of supplemental conjugated linoleic acids on heat-stressed brown Swiss and Holstein cows. *J Dairy Sci.* (2005) 88:1732–40. doi: 10.3168/jds.S0022-0302(05)72846-0
127. Shwartz G, Rhoads ML, Vanbaale MJ, Rhoads RP, Baumgard LH. Effects of a supplemental yeast culture on heat-stressed lactating Holstein cows. *J Dairy Sci.* (2009) 92:935–42. doi: 10.3168/jds.2008-1496
128. Lohölter M, Meyer U, Rauls C, Rehage J, Dänicke S. Effects of niacin supplementation and dietary concentrate proportion on body temperature, ruminal pH and milk performance of primiparous dairy cows. *Arch Anim Nutr.* (2013) 67:202–18. doi: 10.1080/1745039X.2013.793048
129. Hawlin JM, Robinson PH. Intake, milk production and heat stress of dairy cows fed a citrus extract during summer heat. *Anim Feed Sci Technol.* (2015) 208:23–32. doi: 10.1016/j.anifeedsci.2015.06.022

Conflict of Interest Statement: II, FB, GT, and MB were employed by company Lucta S.A.

The remaining authors declare that the research was conducted in the absence of any commercial or financial relationships that could be construed as a potential conflict of interest.

Copyright © 2018 Llonch, Mainau, Ipharraguerre, Bargo, Tedó, Blanch and Manteca. This is an open-access article distributed under the terms of the Creative Commons Attribution License (CC BY). The use, distribution or reproduction in other forums is permitted, provided the original author(s) and the copyright owner(s) are credited and that the original publication in this journal is cited, in accordance with accepted academic practice. No use, distribution or reproduction is permitted which does not comply with these terms.