

## Distinct functions of Egr gene family members in cognitive processes

Roseline Poirier<sup>1,2,†</sup>, H el ene Cheval<sup>1,2</sup>, Caroline Mailhes<sup>3</sup>, Sonia Garel<sup>3</sup>, Patrick Charnay<sup>3</sup>, Sabrina Davis<sup>1,2</sup> and Serge Laroche<sup>1,2</sup>

<sup>1</sup> Univ. Paris Sud, Laboratoire de Neurobiologie de l'Apprentissage, de la M emoire et de la Communication, Orsay, France.

<sup>2</sup> CNRS, UMR 8620, Orsay, France.

<sup>3</sup> INSERM, U784, G en etique Mol eculaire du D eveloppement, Ecole Normale Sup erieure, Paris, France.

### Edited by:

Carmen Sandi, Ecole Polytechnique F ed erale de Lausanne, Switzerland

### Reviewed by:

Oliver Stork, Otto von Guericke University Magdeburg, Germany  
Cesar Venero, Universidad Nacional de Educacion Distancia, Spain  
Carmen Sandi, Ecole Polytechnique F ed erale de Lausanne, Switzerland

### Correspondence:



Roseline Poirier obtained her PhD from the University of Caen Basse-Normandie in 2004, where she studied the effects of early experience on behaviour and brain maturation in cuttlefish. After a postdoctoral work at the Laboratory of Neurobiology of Learning, Memory and Communication directed by Serge Laroche in Orsay, France, she became Associate Researcher/Lecturer at the University of Paris-Sud in 2008. Her main research areas include the cellular and molecular mechanisms of learning and memory and of memory dysfunction in animal models of mental retardation.  
Roseline.Poirier@u-psud.fr

The different gene members of the Egr family of transcriptional regulators have often been considered to have related functions in brain, based on their co-expression in many cell-types and structures, the relatively high homology of the translated proteins and their ability to bind to the same consensus DNA binding sequence. Recent research, however, suggest this might not be the case. In this review, we focus on the current understanding of the functional roles of the different Egr family members in learning and memory. We briefly outline evidence from mutant mice that Egr1 is required specifically for the consolidation of long-term memory, while Egr3 is primarily essential for short-term memory. We also review our own recent findings from newly generated forebrain-specific conditional Egr2 mutant mice, which revealed that Egr2, as opposed to Egr1 and Egr3, is dispensable for several forms of learning and memory and on the contrary can act as an inhibitory constraint for certain cognitive functions. The studies reviewed here highlight the fact that Egr family members may have different, and in certain circumstances antagonistic functions in the adult brain.

Keywords: transcription factor, Egr1, zif268, Egr2, Krox20, learning, memory

### INTRODUCTION

The formation of long-term memory has been shown to be dependent on the synthesis of new proteins but the specific molecular mechanisms that are essential for learning and memory processes and how particular classes of molecules contribute to these events is not fully understood. Several studies indicate that immediate early genes (IEGs) such as Fos, Jun, or Egr1 may play an important role in learning and memory processes (Bozon et al., 2003b; Dragunow, 1996; Knapska and Kaczmarek, 2004). The IEGs are a class of genes that are rapidly and transiently activated by a variety of signalling cascades and phosphorylation events in a protein synthesis-independent manner in

response to neuronal activation. IEGs encode many functionally different products such as secreted proteins, cytoplasmic enzymes and inducible transcription factors that can activate downstream target genes (Herdegen and Leah, 1998). As such, the rapid activation of IEGs encoding transcriptional regulators constitutes an early genomic response in a strategic position in the molecular cascades leading to persistent neuronal modification. To date several lines of evidence suggest that their regulated expression following neuronal activation is a key mechanism for the recruitment of specific gene programs involved in the stabilisation of neural modification required for the laying down of long-term memories.

Among the studies of the functional role of inducible transcriptional regulators in synaptic plasticity and memory processes, many have focused the Early Growth Response (*Egr*) gene family (for reviews, see Abraham et al., 1991; Bozon et al., 2002; Tischmeyer and Grimm, 1999). It was notably demonstrated that a member of *Egr* family, *Egr1* (also known as *NGFI-A*, *Krox-24*, *Zif268*, *Tis8* or *ZENK*), is involved in the maintenance of long-term potentiation (LTP), an activity-dependent form of synaptic plasticity believed to play a crucial role in the formation of memories (Jones et al., 2001). *Egr1* is also essential for the consolidation of several forms of long-term memory (Bozon et al., 2002, 2003b; Jones et al., 2001; Malkani et al., 2004) and for reconsolidation of memory after reactivation during retrieval (Bozon et al., 2003a; Lee et al., 2004). In addition, enhanced memory strength was recently reported in transgenic mice with forebrain over-expression of *Egr1* (Baumgärtel et al., 2008). While the role of *Egr1* in memory is relatively well characterised, that of other members of the *Egr* family has only recently began to be investigated. The *Egr* family in fact comprises four members: *Egr1*, *Egr2* (*Krox-20*), *Egr3* (*Pilot*) and *Egr4* (*NGFI-C*) (Beckmann and Wilce, 1997; O'Donovan et al., 1999; Figure 1). They encode closely related transcription factors that contain three Cys2-Hys2 zinc fingers shared by the four members and that can bind to the same cognate GC-rich consensus DNA binding motif, the *Egr* response element (ERE). The high homology between the three zinc finger sequences of the four members of the *Egr* family (Beckmann and Wilce, 1997) suggests that the proteins may well bind to *cis*-regulatory regions of at least a subset of the same target genes (Chavrier et al., 1990; Lemaire et al., 1990; Swirnoff and Milbrandt, 1995). However, outside their common DNA-binding domain, the sequences of the different *Egr* members have less homology, suggesting they can be differentially regulated by selective signalling pathways and may

therefore serve different functions (Beckmann and Wilce, 1997; Herdegen and Leah, 1998). Nevertheless a few conserved domains have been identified and are depicted in Figure 1. Of particular interest is the interaction domain for the Nab proteins, which is found in *Egr1*, *Egr2* and *Egr3*. Nab1 and Nab2 have initially been described as repressors of the transcriptional activity of *Egr* proteins (Russo et al., 1995; Svaren et al., 1996; Swirnoff et al., 1998). However recent data suggest that they can also act as synergistic factors for *Egr2* function at least (Desmazières et al., in press; Le et al., 2005). Finally, a detailed structure-function analysis of the *Egr2* protein has been performed recently and has revealed that other domains within the N-terminal part of the protein are involved in the activation of specific target genes (Desmazières, Charnay and Gilardi-Hebenstreit, unpublished data). One of these domains is conserved in *Egr1* and *Egr3*.

In brain, *Egr* family members show, in general, a similar regional profile of basal expression (Beckmann and Wilce, 1997). mRNA and proteins are detected in several areas of the neocortex, hippocampus, entorhinal cortex, amygdala, nucleus accumbens, striatum, olfactory bulb and cerebellar cortex, with different levels of expression (reviewed in Beckmann and Wilce, 1997). In the cerebral cortex, the highest levels of *Egr1*, *Egr3* and *Egr4* are detected in layers II and IV, whereas *Egr2* predominates in layers II and III (Beckmann and Wilce, 1997). In the hippocampus, all *Egr* family members are highly expressed in CA1-3 pyramidal cells, with negligible basal levels in granule cells of the dentate gyrus (Beckmann and Wilce, 1997; Herdegen et al., 1993; Mack et al., 1990; Yamagata et al., 1994). In addition to their basal expression, the expression of *Egr* family members can be induced in different brain areas after a variety of neuronal stimulation paradigms such as the induction of LTP or maximal electroconvulsive shocks (MECS) inducing seizure activity, or in behavioural circumstances after

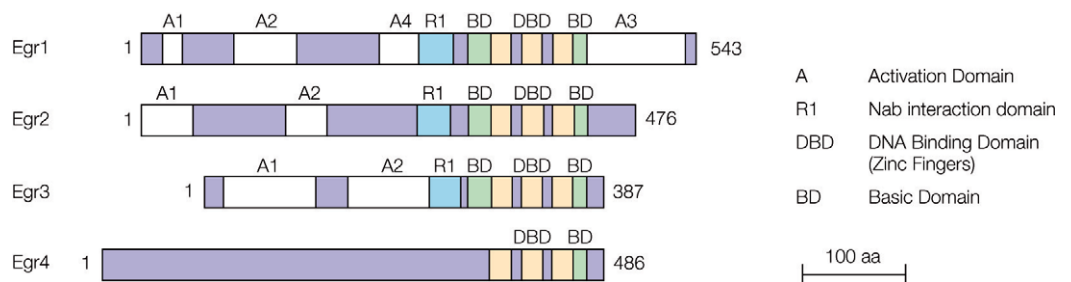


Figure 1 | **Schematic representation of the four members of the *Egr* family (Beckmann and Wilce, 1997; O'Donovan et al., 2000; Russo et al., 1995).** The most closely related members are *Egr2* and *Egr3*, followed by *Egr1*. *Egr4* is much more distant. Several conserved sequences are featured: the zinc fingers that are extremely well conserved between all members; two basic regions flanking the zinc fingers that are conserved between *Egr1*, *Egr2* and *Egr3*, the C-terminal one being also observed in *Egr4*; the Nab interaction domain that is present in *Egr1*, *Egr2* and *Egr3*.

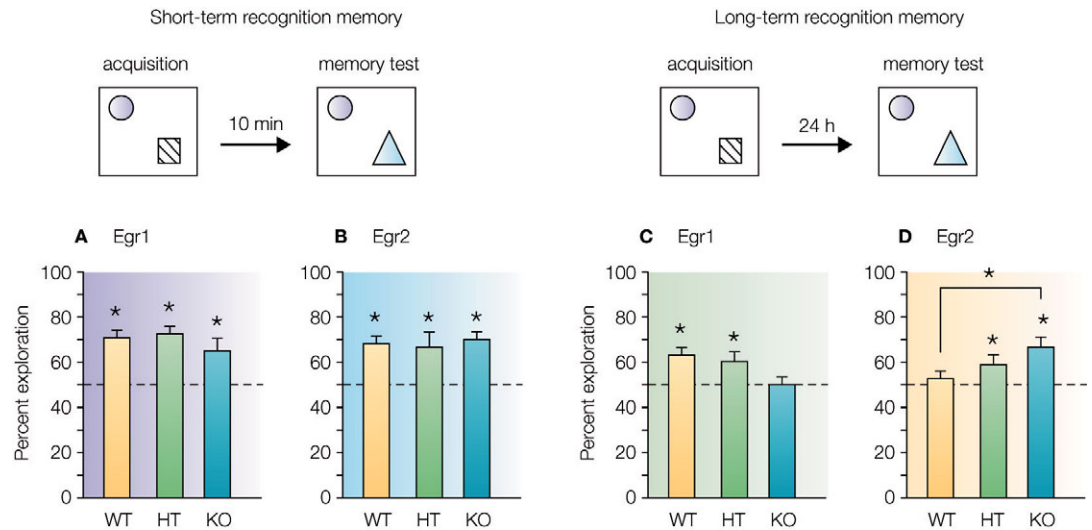
exposure to novel environments of specific learning experiences (reviewed in Beckmann and Wilce, 1997; Davis et al., 2003; Knapska and Kaczmarek, 2004).

### FUNCTIONAL ROLE OF THE *Egr* GENE FAMILY MEMBERS

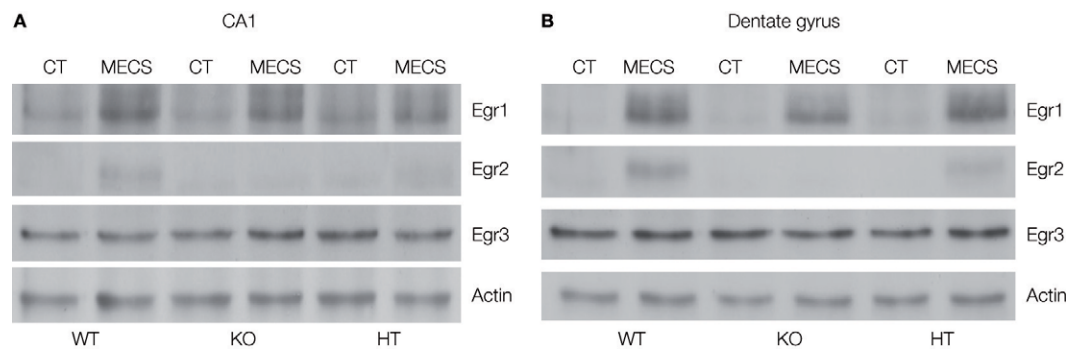
*Egr1* is the most widely studied member of the *Egr* family in processes of synaptic plasticity and memory. The origin of *Egr1* research in this field can be traced back to the discovery of its rapid induction in dentate granule cells following the induction of LTP (Cole et al., 1989; Wisden et al., 1990) and its expression has since been widely used as a marker of neuronal plasticity in a learning context (see Davis et al., 2003; Knapska and Kaczmarek, 2004 for reviews). Using *Egr1* mutant mice, it has been demonstrated that *Egr1*-deficiency results in a complete and specific loss of the maintenance of late-LTP at perforant path-to-dentate granule cell synapses (Jones et al., 2001). In parallel, a unique feature of *Egr1*-deficient mice is their inability to form long-term memories in a variety of behavioural tasks such as conditioned taste aversion, olfactory discrimination, novel object recognition and spatial navigation, while short-term memory, as well as early-LTP, is intact (Jones et al., 2001). More recently, the behavioural phenotype of *Egr3* mutant mice has also been characterised and major differences with the neural and behavioural phenotype of *Egr1* mutant mice have been found (Gallitano-Mendel et al., 2007; Li et al., 2007). *Egr3* mutant mice were found to have motor abnormalities due to defects in muscle spindles morphogenesis (Tourtellotte and Mildbrandt, 1998), heightened reactivity to stressful stimuli, abnormalities in their adaptation to novel and stressful stimuli, and abnormalities in social interactions (Gallitano-Mendel et al., 2007). In addition, clear short-term memory deficits were identified in contextual fear conditioning and object recognition, with a consequential defect in long-term memory performance, together with compromised early-phase of LTP in area CA1 of the hippocampus (Li et al., 2007). Deficits in NR2B-containing NMDA receptor function and in CA1 hippocampal LTD have also been reported in these mice (Gallitano-Mendel et al., 2007). In contrast to the role of *Egr1* and *Egr3* in different aspects of synaptic plasticity and memory processes, very little is known about the role of *Egr2* and *Egr4*. To our knowledge, no study has yet examined the functional role of *Egr4* in these processes. For *Egr2*, a specific function has been documented in the regulation of peripheral nerve myelination (Topilko et al., 1994), hindbrain segmentation (Schneider-Maunoury et al., 1993; Swiatek and Gridley, 1993) and endochondral bone formation (Levi et al., 1996). Examination of its functional

role in adult brain, however, has been hampered by the fact that mutant mice carrying two *Egr2* null alleles show high perinatal lethality (Decker et al., 2006; Schneider-Maunoury et al., 1993; Swiatek and Gridley, 1993; Topilko et al., 1994), a short lifespan presumably due to defects in hindbrain rhythmogenic neural networks controlling respiratory functions (Jacquin et al., 1996).

To circumvent perinatal lethality, we recently generated novel *Egr2* conditional mutant mice based on a floxed allele allowing postnatal, CaMKII promoter-dependent Cre-mediated excision of *Egr2* selectively in adult forebrain neurons (Poirier et al., 2007). In this study, we investigated whether lack of *Egr2* in mice results in behavioural deficits similar to those observed in *Egr1* or *Egr3* mutant mice. Performance of homozygous and heterozygous conditional mutant mice, and of control littermates, was thus investigated in a battery of behavioural tasks to evaluate motor capacity and exploratory behaviour (grid-suspension, traction reflex and rotarod tests, open-field activity), emotional reactivity (elevated-plus maze test), as well as learning and memory abilities in tasks such as object recognition, spatial learning in the water maze, trace fear conditioning and conditioned taste aversion learning. Homozygous and heterozygous conditional *Egr2* mutant mice appeared healthy and showed no abnormal spontaneous behaviour or brain structure abnormalities. They showed no sign of anxiety disturbance; nor was their motor activity and coordination impaired. In contrast to our initial expectations, we found that none of the forms of learning examined were impaired in *Egr2* deficient mice. Both conditional homozygous and heterozygous transgenic mice demonstrated normal learning and memory performance in spatial navigation, normal associative memory in a conditioned taste aversion paradigm and normal fear learning and memory in a trace fear conditioning paradigm. Surprisingly, however, we found that conditional *Egr2* mutant mice had superior implicit motor skill learning abilities in an accelerating rotarod task, and enhanced long-term object recognition memory (Poirier et al., 2007). With the training protocol used to assess recognition memory, control mice could form short-term, but not long-term recognition memory, while conditional *Egr2* mice, with identical short-term memory performance to that of their controls, were able to form a long-term memory for objects (Figure 2), suggesting facilitation of consolidation processes. In this task, performance of heterozygous mice was in between that of knockout and wild-type mice, supporting a gene-dosage effect. In summary, our results revealed that forebrain *Egr2*-deficiency does not result in learning or memory impairments, but



**Figure 2 | Short-term and long-term object recognition memory in *Egr1* and *Egr2* deficient mice.** During acquisition, wild-type (WT) heterozygous (HT) and homozygous (KO) mice were exposed to two objects and retention was tested 10 min or 24 h later by replacing one familiar object by a novel object. The histograms represent the time spent exploring the novel object during memory retention. **(A and B)** Ten minutes after acquisition, both *Egr1* and *Egr2* mutant mice spent significantly more time exploring the novel than the familiar object, showing good short-term recognition memory. **(C and D)** Long-term recognition memory tested 24 h after acquisition. A clear deficit was observed in *Egr1* mutant mice **(C)**. By contrast, *Egr2* mutant mice showed better performance than their WT controls **(D)**. In both cases, heterozygous mice with half the complement of the Egr proteins showed intermediate performance, suggesting gene-dosage effect. Modified from Jones et al. (2001) and Poirier et al. (2007).



**Figure 3 | Basal and MECS-induced expression of Egr family members in the hippocampus of *Egr2* mutant mice.** Egr1, Egr2 and Egr3 expression levels were measured by Western immunoblotting from area CA1 and the dentate gyrus of mice from the three genotypes in a control condition (CT) and 2 hours after MECS-induced seizure. Actin was used as a control protein. In the absence of Egr2, basal and MECS-induced expression of Egr1 and Egr3 was not significantly modified. Data from Poirier et al. (2007).

on the contrary, facilitates performance in certain tasks.

Clearly, the behavioural phenotype of conditional *Egr2* mutant mice appears in sharp contrast to that of *Egr1* and *Egr3* mutant mice when comparing their performance in similar tasks. Whereas *Egr1*-deficiency leads to significant memory deficits in conditioned taste aversion, spatial learning and novel object recognition when tested 24 h after acquisition, no specific impairment was found for these forms of memories in *Egr2* mutant mice. More surprisingly, as summarized in **Figure 2**, long-term recognition memory is severely affected in *Egr1* mutant mice (Jones et al., 2001), whereas

*Egr2* mutant mice demonstrated a better memory ability than their controls (Poirier et al., 2007). In comparison, *Egr3* mutant mice were shown not only to have deficits in long-term memory in a similar object recognition task, but also compromised short-term memory (Li et al., 2007). These results clearly establish that Egr family members have distinct, and in certain circumstances antagonistic functions in the adult brain.

In *Egr2*-deficient mice, we analysed the basal and stimulation-induced expression of Egr1 and Egr3 proteins in the dentate gyrus and area CA1 of the hippocampus, using maximal electroconvulsive shock (MECS) (Poirier et al., 2007; **Figure 3**).

We detected no over-expression of *Egr1* or *Egr3* in the mice, suggesting that the absence of memory deficits and the gain of function in certain tasks in *Egr2*-deficient mice is not due to a compensatory increase in basal or induced expression of *Egr1* or *Egr3* in these structures.

### REGULATION OF EGR FAMILY MEMBERS IN SYNAPTIC PLASTICITY AND LEARNING

As with *Egr1* and *Egr3*, the expression of *Egr2* is regulated after certain forms of pharmacological or physiological stimuli. Induction of *Egr2* mRNA or protein has been observed for example after kainic acid injection (Gass et al., 1994) or seizure activity (Bhat et al., 1992, but see Mack et al., 1992). All three *Egr* members are rapidly regulated after induction of LTP in the dentate gyrus, although the regulation of *Egr2* and *Egr3* appears to require stronger LTP-inducing stimuli, but then expression of the proteins lasts longer than that of *Egr1* (Cole et al., 1989; Williams et al., 1995; Worley et al., 1993; Yamagata et al., 1994).

In learning, *Egr1* mRNA or protein are also rapidly induced in specific brain structures in a variety of tasks such as active avoidance learning (Nikolaev et al., 1992), brightness discrimination (Grimm and Tischmeyer, 1997), visual paired associate learning in monkeys (Okuno and Miyashita, 1996; Tokuyama et al., 2002), song learning in birds (Bolhuis et al., 2000; Jarvis et al., 1995; Mello et al., 1992), learning and/or retrieval of contextual and cued fear learning (Frankland et al., 2004; Hall et al., 2001; Malkani and Rosen, 2000; Weitemier and Ryabinin, 2004) and spatial learning (Guzowski et al., 2001; Maviel et al., 2004). In general, as in synaptic plasticity paradigms, the induction of *Egr1* occurs rapidly after learning or exposure to learning-associated cues, and is transient, suggesting a role in the transition from short- to long-term memory.

Much less is known about the regulation of other *Egr* family members during learning. In single-trial contextual fear conditioning, induction of *Egr2*, *Egr3* and *Egr4* has not been clearly observed (Malkani and Rosen, 2000). In a recent study, however, Desteno and Schmauss (2008) showed induction of *Egr2* expression in areas of the medial prefrontal cortex of mice performing an attention-set-shifting task, but not in a spatial working memory task. In this study, the authors have detected no induction of *Egr1* and *Egr3* in the same brain structures in the attention-set-shifting task. These observations suggest that *Egr* family members may be differentially induced during selective cognitive tasks. Further research is needed however to expand our knowledge of the specific conditions under

which distinct *Egr* family members are activated, and of their localization and kinetics of expression in relation to specific types of learning.

Although a wide range of neurotransmitter systems can induce expression of *Egr* family members (Beckmann and Wilce for a review), the cell-signalling pathways leading to the regulated expression of *Egr* members in synaptic plasticity and learning have not been precisely defined. Induction of *Egr1* in the hippocampus has been the focus of some investigations and it has been in particular shown that activity-dependent expression of *Egr1* is dependent upon NMDA receptor (Cole et al., 1989; Gass et al., 1993; Wisden et al., 1990) and MAPK/ERK activation (Davis et al., 2000), both of which are known to play a key role in synaptic plasticity and learning. Conversely, *Egr1* can be negatively regulated by the protein phosphatase calcineurin, a negative regulator of neuronal signalling and of memory formation (Baumgärtel et al., 2008). Much less is known about activity-dependent induction of *Egr2* and *Egr3* in the brain. Certain evidence suggests that inactivation of the adenosine 2A receptor in mice results in an up-regulation of *Egr2* associated with down-regulation of *Egr1* in the striatum (Yu et al., 2005), and that mGluR5 antagonists induce down-regulation of *Egr2*, but not of other *Egr* members in the rat cortex (Gass and Olive, 2008). In addition both *Egr1* and *Egr2* have been shown to be regulated by BDNF/TrkB in a CCAAT/enhancer binding proteins (C/EBP $\alpha$ , $\beta$ ) dependent manner (Calella et al., 2007). To our knowledge, no study has yet examined the signalling cascades involved in the regulated expression of *Egr3* in the adult brain. These data reinforce the notion of a differential sensitivity of *Egr* members activation in response to distinct types of stimuli, however whether this type of differential regulation of the *Egr* member transcription factors occurs during the consolidation of memory is yet to be known.

### CONCLUSION

Our recent findings provide the first evidence that the absence of *Egr2* in forebrain neurons may facilitate certain forms of learning and memory and reinforce the notion that *Egr1*, *Egr2* and *Egr3* can have different functions in the adult brain and, in certain circumstances, antagonistic functions. Such antagonistic roles played by *Egr* members have already been observed during the development of Schwann cell lineage where *Egr1* and *Egr2* are expressed successively and in a mutually exclusive manner (Topilko et al., 1997) and more recently in the regulation of T-cell function (Collins et al., 2008), suggesting they might compete and possibly repress each other. The molecular basis of these

antagonistic actions however has not yet been established. In the adult brain, the mechanisms whereby Egr members could exert antagonistic functions in learning and memory are also not elucidated. One possibility is the control of different sets of downstream targets genes. Egr family members might also regulate some of the same downstream genes, but in opposite manners, due to non-conserved regulatory regions. Although certain Egr direct target genes have been characterized in different tissues such as the pituitary for Egr1 (Lee et al., 1996; Topilko et al., 1998) and hindbrain for Egr2 (Sham et al., 1993), little is known about the Egr direct target genes in the adult brain. In neuronal cells, it has been suggested that Egr1 regulates expression of synapsin I and II and of the cdk5-regulator p35 (Harada et al., 2001; Petersohn et al., 1995; Thiel et al., 1994). The list of putative Egr1 target genes derived from a large-scale profiling study conducted in PC12 cells have also pointed to a major role of Egr1 in controlling various proteins of the proteasome (James et al., 2005). Recently, a proteomic study conducted in *Egr1* over-expressing mice revealed changes in the expression of proteins of many functional groups, including transcription factors, DNA and RNA modifying enzymes, components of the proteasomal and ubiquitination machinery, kinases, phosphatases and small GTPases, cytoskeletal proteins and various proteins involved in vesicle recycling and postsynaptic organization (Baumgärtel et al., 2008). Using *Egr1*-deficient and *Egr3*-deficient mice, it has also been shown that the plasticity-associated gene *Arg3.1/Arc* is a direct transcriptional target of Egr1 and Egr3 (Li et al., 2005) and Ehrengreuber et al. (2000) using adenoviral gene transfer, identified *Egr3* and *Nab2* as Egr1 target genes in neuroblastoma cells. Few studies have directly examined potential target genes of other Egr members. During development, Egr2 was shown to activate *Hox* genes and genes associated with nerve myelination such as myelin basic protein, myelin protein zero and desert hedgehog (Jang et al., 2006; Manzanares et al., 2002; Nagarajan et al., 2001; Nonchev et al., 1996; Seitanidou et al., 1997; Sham et al., 1993; Topilko et al., 1994). In the striatum of adult adenosine 2A receptor knockout mice, Yu et al. (2005) identified a number of up and down-regulated genes, including an increased expression of *Egr2* while *Egr1* expression was decreased, and found an over-representation of predicted *Egr2* binding sites in the promoter regions of the regulated genes. In this study, *Egr2* binding to and regulation of the protein phosphatase PP2A was confirmed by chromatin immunoprecipitation.

Despite recognising the same ERE sequence in promoter regions, site recognition involves additional

factors that interact specifically with non-conserved regions of Egr proteins, adding a further layer of complexity in target gene regulation. Complex control of Egr-mediated gene regulation is illustrated by studies showing that Egr1 and Egr3 directly bind to, and regulate expression of the low affinity neurotrophin receptor (p75<sup>NTR</sup>) in Schwann cells by binding preferentially to two distinct Egr binding motifs in the promoter region of the p75<sup>NTR</sup> gene, with a trans-activation ability which varies with Egr1 and Egr3 proteins levels (Gao et al., 2007), highlighting the fact that Egr members may not have entirely redundant functions. While these studies point to the possibility that Egr family members may control distinct gene programs, the precise identity of the regulated genes is still far from reach and would need to be characterized in a learning context to understand mechanistically how different Egr members affect cognitive functions. The rapidly evolving technologies for gene screening and the availability of *Egr*-specific mutant mice will likely serve as powerful tools to characterize specific gene programs that are under the control of each Egr family member in the brain in vivo.

Finally, the fact that Egr2 acts as an inhibitory constrain on certain cognitive functions may also involve its potency to positively regulate the expression of *Nab1* and *Nab2* (Desmazières, Charnay and Gilardi-Hebenstreit, unpublished data; Mechta-Grigoriou et al., 2000; Nagarajan et al., 2001). Egr proteins possess a domain for interaction with the Nab1 and Nab2 proteins that were initially described as transcriptional co-repressors (Russo et al., 1995; Svaren et al., 1996; Swirnoff et al., 1998), but are also likely to act in a positive manner in specific cell types (Desmazières et al., 2008). In this respect, it is interesting to note that a recent study identified multiple Egr binding sites on the promoter of *Nab2* in a region critical for promoter activity, suggesting that Egr members are direct regulators of *Nab2* (Kumbrink et al., 2005). Thus, it is tempting to speculate that the absence of Egr2 in neurons may result in a reduced expression of Nab proteins, and that this would increase or prolong transcriptional activity of other Egr family members or affect other transcriptional regulators possessing Nab-mediated activities, resulting in a facilitation of certain types of memory. To date, we are only beginning to understand the functional roles of the different members of this family of transcriptional regulators in higher cognitive functions. These advances now give us the possibility to define the complex combination of activity-dependent recruitment of the different *Egr* family members more precisely, and how they interact with each other and with their co-regulators and what specific gene programs they control in specific brain structures during learning and memory.

## CONFLICT OF INTEREST STATEMENT

The authors declare that the research was conducted in the absence of any commercial or financial relationships that could be construed as a potential conflict of interest.

## ACKNOWLEDGEMENTS

The authors are grateful to François Tronche for the gift of the *CaMKII-Cre* line, and to Claire Chevalier, Nathalie Samson, Pascale Veyrac and

Sandra Vandergest for animal care. Our deepest thanks go to Emmanuel Taillebourg who was involved in the initiation of the generation of the conditional mutant.

This work was supported by CNRS, INSERM, and by grants from the French Ministry of Research (ACI-NEURO-NIC-0027) to S.D. and P.C. and from EU Marie Curie Research Training Program (RTN-CT-2003-504231) to S.L. H.C. was supported by a fellowship from the French Ministry of Research.

## REFERENCES

- Abraham, W. C., Dragunow, M., and Tate, W. P. (1991). The role of immediate early genes in the stabilization of long-term potentiation. *Mol. Neurobiol.* 5, 297–314.
- Baumgärtel, K., Genoux, D., Welzl, H., Tweedie-Cullen, R. Y., Koshibu, K., Livingstone-Zatchej, M., Mamie, C., and Mansuy, I. M. (2008). Control of the establishment of aversive memory by calcineurin and Zif268. *Nature Neurosci.* 11, 572–578.
- Beckmann, A. M., and Wilce, P. A. (1997). Egr transcription factors in the nervous system. *Neurochem. Int.* 31, 477–510.
- Bhat, R. V., Worley, P. F., Cole, A. J., and Baraban, J. M. (1992). Activation of the zinc finger encoding gene *krox-20* in adult rat brain: comparison with *zif268*. *Mol. Brain Res.* 13, 263–266.
- Bolhuis, J. J., Zijlstra, G. G., den Boer-Visser, A. M., and Van Der Zee, E. A. (2000). Localized neuronal activation in the zebra finch brain is related to the strength of song learning. *Proc. Natl. Acad. Sci. USA* 97, 2282–2285.
- Bozon, B., Davis, S., and Laroche, S. (2002). Regulated transcription of the immediate early gene *Zif268*: mechanisms and gene dosage-dependent function in synaptic plasticity and memory formation. *Hippocampus* 12, 570–577.
- Bozon, B., Davis, S., and Laroche, S. (2003a). A requirement for the immediate early gene *zif268* in reconsolidation of recognition memory after retrieval. *Neuron* 40, 695–701.
- Bozon, B., Kelly, A., Josselyn, S. A., Silva, A. J., Davis, S., and Laroche, S. (2003b). MAPK, CREB and *zif268* are all required for the consolidation of recognition memory. *Phil. Trans. R. Soc. B* 358, 805–814.
- Carella, A. M., Nerlov, C., Lopez, R. G., Sciarretta, C., von Bohlen Und Halbach, O., Bereshchenko, O., and Minichiello, L. (2007). Neurotrophin/Trk receptor signaling mediates C/EBPalpha, -beta and NeuroD recruitment to immediate-early gene promoters in neuronal cells and requires C/EBPs to induce immediate-early gene transcription. *Neural Develop.* 2, 1–21.
- Chavrier, P., Vesque, C., Galliot, B., Vigneron, M., Dolle, P., Duboule, D., and Charnay, P. (1990). The segment-specific gene *Krox-20* encodes a transcription factor with binding sites in the promoter region of the *Hox-1.4* gene. *EMBO J.* 9, 1209–1218.
- Cole, A. J., Saffen, D. W., Baraban, J. M., and Worley, P. F. (1989). Rapid increase of an immediate early gene messenger RNA in hippocampal neurons by synaptic NMDA receptor activation. *Nature* 340, 474–476.
- Collins, S., Lutz, M. A., Zarek, P. E., Anders, R. A., Kersh, G. J., and Powell, J. D. (2008). Opposing regulation of T cell function by *Egr-1/NAB2* and *Egr-2/Egr-3*. *Eur. J. Immunol.* 38, 528–536.
- Davis, S., Bozon, B., and Laroche, S. (2003). How necessary is the activation of the immediate early gene *zif268* in synaptic plasticity and learning? *Behav. Brain Res.* 142, 17–30.
- Davis, S., Vanhoutte, P., Pages, C., Caboche, J., and Laroche, S. (2000). The MAPK/ERK cascade targets both Elk-1 and cAMP response element-binding protein to control long-term potentiation-dependent gene expression in the dentate gyrus in vivo. *J. Neurosci.* 20, 4563–4572.
- Decker, L., Desmarquet-Trin-Dinh, C., Taillebourg, E., Ghislain, J., Vallat, J. M., and Charnay, P. (2006). Peripheral myelin maintenance is a dynamic process requiring constant *Krox20* expression. *J. Neurosci.* 26, 9771–9779.
- Desmazières, A., Decker, L., Vallat, J.-M., Charnay, P., and Gilardi-Hebenstreit, P. (2008). Disruption of *Krox20*-Nab interaction leads to a peripheral neuropathy with biphasic evolution. *J. Neurosci.* 28, 5891–5900.
- Desteno, D. A., and Schmauss, C. (2008). Induction of early growth response gene 2 expression in the forebrain of mice performing an attention-set-shifting task. *Neuroscience* 18, 417–428.
- Dragunow, M. (1996). A role for immediate-early transcription factors in learning and memory. *Behav. Genet.* 26, 293–299.
- Ehrengruber, M. U., Muhlebach, S. G., Söhrman, S., Leutenegger, C. M., Lester, H. A., Davidson, N. (2000). Modulation of early growth response (EGR) transcription factor-dependent gene expression by using recombinant adenovirus. *Gene* 258, 63–69.
- Frankland, P. W., Bontempi, B., Talton, L. E., Kaczmarek, L., and Silva, A. J. (2004). The involvement of the anterior cingulate cortex in remote contextual fear memory. *Science* 304, 881–883.
- Gallitano-Mendel, A., Izumi, Y., Tokuda, K., Zorumski, C. F., Howell, M. P., Muglia, L. J., Wozniak, D. E., and Milbrandt, J. (2007). The immediate early gene early growth response gene 3 mediates adaptation to stress and novelty. *Neuroscience* 148, 633–643.
- Gao, X., Daugherty, R. L., and Tourtellotte, W. G. (2007). Regulation of low affinity neurotrophin receptor (p75(NTR)) by early growth response (Egr) transcriptional regulators. *Mol. Cell Neurosci.* 36, 501–514.
- Gass, J. T., and Olive, M. F. (2008). Transcriptional profiling of the rat frontal cortex following administration of the mGlu5 receptor antagonists MPEP and MTEP. *Eur. J. Pharmacol.* 584, 253–262.
- Gass, P., Herdegen, T., Bravo, R., and Kiessling, M. (1993). Induction and suppression of immediate early genes in specific rat brain regions by the non-competitive N-methyl-D-aspartate receptor antagonist MK-801. *Neuroscience* 53, 749–758.
- Gass, P., Herdegen, T., Bravo, R., and Kiessling, M. (1994). High induction threshold for transcription factor *KROX-20* in the rat brain: partial co-expression with heat shock protein 70 following limbic seizures. *Mol. Brain Res.* 23, 292–298.
- Grimm, R., and Tischmeyer, W. (1997). Complex patterns of immediate early gene induction in rat brain following brightness discrimination training and pseudotraining. *Behav. Brain Res.* 84, 109–116.
- Guzowski, J. E., Setlow, B., Wagner, E. K., and McGaugh, J. L. (2001). Experience-dependent gene expression in the rat hippocampus after spatial learning: a comparison of the immediate-early genes *Arc*, *c-fos*, and *zif268*. *J. Neurosci.* 21, 5089–5098.
- Hall, J., Thomas, K. L., and Everitt, B. J. (2001). Cellular imaging of *zif268* expression in the hippocampus and amygdala during contextual and cued fear memory retrieval: selective activation of hippocampal CA1 neurons during the recall of contextual memories. *J. Neurosci.* 21, 2186–2193.
- Harada, T., Morooka, T., Ogawa, S., and Nishida, E. (2001). ERK induces p35, a neuron-specific activator of Cdk5, through induction of *Egr1*. *Nat. Cell Biol.* 3, 453–459.
- Herdegen, T., Kiessling, M., Bele, S., Bravo, R., Zimmermann, M., and Gass, P. (1993). The *KROX-20* transcription factor in the rat central and peripheral nervous systems: novel expression pattern of an immediate early gene-encoding protein. *Neuroscience* 57, 41–52.
- Herdegen, T., and Leah, J. D. (1998). Inducible and constitutive transcription factors in the mammalian nervous system: control of gene expression by Jun, Fos and Krox, and CREB/ATF proteins. *Brain Res. Rev.* 28, 370–490.
- Jacquin, T. D., Borday, V., Schneider-Maunoury, S., Topilko, P., Ghilini, G., Kato, F., Charnay, P., and Champagnat, J. (1996). Reorganization of pontine rhythmogenic neuronal networks in *Krox-20* knockout mice. *Neuron* 17, 747–758.

- James, A. B., Conway, A. M., and Morris, B. J. (2005). Genomic profiling of the neuronal target genes of the plasticity-related transcription factor – Zif268. *J. Neurochem.* 95, 796–810.
- Jang, S. W., LeBlanc, S. E., Roopra, A., Wrabetz, L., and Svaren, J. (2006). *In vivo* detection of Egr2 binding to target genes during peripheral nerve myelination. *J. Neurochem.* 98, 1678–1687.
- Jarvis, E. D., Mello, C. V., and Nottebohm, F. (1995). Associative learning and stimulus novelty influence the song-induced expression of an immediate early gene in the canary forebrain. *Learn. Mem.* 2, 62–80.
- Jones, M. W., Errington, M. L., French, P. J., Fine, A., Bliss, T. V. P., Garel, S., Charnay, P., Bozon, B., Laroche, S., and Davis S. (2001). A requirement for the immediate early gene Zif268 in the expression of late LTP and the consolidation of long-term memories. *Nat. Neurosci.* 4, 289–296.
- Knapaska, E., and Kaczmarek, L. (2004). A gene for neuronal plasticity in the mammalian brain: Zif268/Egr-1/NGFI-A/Krox-24/TIS8/ZENK? *Prog. Neurobiol.* 74, 183–211.
- Kumbrink, J., Gerlinger, M., and Johnson, J. P. (2005). Egr-1 induces the expression of its corepressor nab2 by activation of the nab2 promoter thereby establishing a negative feedback loop. *J. Biol. Chem.* 280, 42785–42793.
- Le, N., Nagarajan, R., Wang, J. Y., Svaren, J., LaPash, C., Araki, T., Schmidt, R. E., and Milbrandt, J. (2005). Nab proteins are essential for peripheral nervous system myelination. *Nat. Neurosci.* 8, 932–940.
- Lee, J. L., Everitt, B. J., and Thomas, K. L. (2004). Independent cellular processes for hippocampal memory consolidation and reconsolidation. *Science* 304, 839–843.
- Lee, S. L., Sadovsky, Y., Swirnoff, A. H., Polish, J. A., Goda, P., Gavriliina, G., and Milbrandt, J. (1996). Luteinizing hormone deficiency and female infertility in mice lacking the transcription factor NGFI-A (Egr-1). *Science* 273, 1219–1221.
- Lemaire, P., Vesque, C., Schmitt, J., Stunnenberg, H., Frank, R., and Charnay, P. (1990). The serum-inducible mouse gene Krox-24 encodes a sequence-specific transcriptional activator. *Mol. Cell Biol.* 10, 3456–3467.
- Levi, G., Topilko, P., Schneider-Maunoury, S., Lasagna, M., Mantero, S., Cancedda, R., and Charnay, P. (1996). Defective bone formation in Krox-20 mutant mice. *Development* 122, 113–120.
- Li, L., Carter, J., Gao, X., Whitehead, J., and Tourtellotte, W. G. (2005). The neuroplasticity-associated arc gene is a direct transcriptional target of early growth response (Egr) transcription factors. *Mol. Cell Biol.* 25, 10286–10300.
- Li, L., Yun, S. H., Keblesh, J., Trommer, B. L., Xiong, H., Radulovic, J., and Tourtellotte, W. G. (2007). Egr3, a synaptic activity regulated transcription factor that is essential for learning and memory. *Mol. Cell Neurosci.* 35, 76–88.
- Mack, K., Day, M., Milbrandt, J., and Gottlieb, D. I. (1990). Localization of the NGFI-A protein in the rat brain. *Mol. Brain Res.* 8, 177–180.
- Mack, K. J., Cortner, J., Mack, P., and Farnham, P. J. (1992). Krox-20 messenger RNA and protein expression in the adult central nervous system. *Mol. Brain Res.* 14, 117–123.
- Malkani, S., and Rosen, J. B. (2000). Specific induction of early growth response gene 1 in the lateral nucleus of the amygdala following contextual fear conditioning in rats. *Neuroscience* 97, 693–702.
- Malkani, S., Wallace, K. J., Donley, M. P., and Rosen, J. B. (2004). An egr-1 (zif268) antisense oligodeoxynucleotide infused into the amygdala disrupts fear conditioning. *Learn. Mem.* 11, 617–624.
- Manzanares, M., Nardelli, J., Gilardi-Hebenstreit, P., Marshall, H., Giudicelli, F., Martinez-Pastor, M. T., Krumlauf, R., and Charnay, P. (2002). Krox20 and kreisler co-operate in the transcriptional control of *Hoxb3* hindbrain segmental expression. *EMBO J.* 21, 365–376.
- Maviel, T., Durkin, T. P., Menzaghi, F., and Bontempi, B. (2004). Sites of neocortical reorganization critical for remote spatial memory. *Science* 305, 96–99.
- Mehta-Grigoriou, F., Garel, S., and Charnay, P. (2000). Nab proteins mediate a negative feedback loop controlling Krox-20 activity in the developing hindbrain. *Development* 127, 119–128.
- Mello, C. V., Vicario, D. S., and Clayton, D. F. (1992). Song presentation induces gene expression in the songbird forebrain. *Proc. Natl. Acad. Sci. USA* 89, 6818–6822.
- Nagarajan, R., Svaren, J., Le, N., Araki, T., Watson, M., and Milbrandt, J. (2001). EGR2 mutations in inherited neuropathies dominant-negatively inhibit myelin gene expression. *Neuron* 30, 355–368.
- Nikolaev, E., Kaminska, B., Tischmeyer, W., Matthies, H., and Kaczmarek, L. (1992). Induction of expression of genes encoding transcription factors in the rat brain elicited by behavioral training. *Brain Res. Bull.* 28, 479–484.
- Nonchev, S., Vesque, C., Maconochie, M., Seitanidou, T., Ariza-McNaughton, L., Frain, M., Marshall, H., Sham, M. H., Krumlauf R., and Charnay P. (1996). Segmental expression of *Hoxa-2* in the hindbrain is directly regulated by Krox-20. *Development* 122, 543–554.
- Okuno, H., and Miyashita, Y. (1996). Expression of the transcription factor Zif268 in the temporal cortex of monkeys during visual paired associate learning. *Eur. J. Neurosci.* 8, 2118–2128.
- O'Donovan, K. J., Levkovitz, Y., Ahn, D., and Baraban, J. M. (2000). Functional comparison of Egr3 transcription factor isoforms: identification of an activation domain in the N-terminal segment absent from Egr3beta, a major isoform expressed in brain. *J. Neurochem.* 75, 1352–1357.
- O'Donovan, K. J., Tourtellotte, W. G., Milbrandt, J., and Baraban, J. M. (1999). The EGR family of transcription-regulatory factors: progress at the interface of molecular and systems neuroscience. *Trends Neurosci.* 22, 167–173.
- Petersohn, D., Schoch, S., Brinkmann D. R., and Thiel, G. (1995). The human synapsin II gene promoter. Possible role for the transcription factor zif268/egr-1, polyoma enhancer activator 3, and AP2. *J. Biol. Chem.* 270, 24361–24369.
- Poirier, R., Cheval, H., Mailhes, C., Charnay, P., Davis, S., and Laroche, S. (2007). Paradoxical role of an Egr transcription factor family member, Egr2/Krox20, in learning and memory. *Front. Behav. Neurosci.* 1, 6. doi: 10.3389/neuro.08/006.2007.
- Russo, M. W., Severson, B. R., and Milbrandt, J. (1995). Identification of NAB1, a repressor of NGFI-A- and Krox20-mediated transcription. *Proc. Natl. Acad. Sci. USA* 92, 6873–6877.
- Schneider-Maunoury, S., Topilko, P., Seitanidou, T., Levi, G., Cohen-Tannoudji, M., Pournin, S., Babinet, C., and Charnay, P. (1993). Disruption of Krox-20 results in alteration of rhombomeres 3 and 5 in the developing hindbrain. *Cell* 75, 1199–1214.
- Seitanidou, T., Schneider-Maunoury, S., Desmarquet, C., Wilkinson, D. G., and Charnay, P. (1997). Krox-20 is a key regulator of rhombomere-specific gene expression in the developing hindbrain. *Mech. Dev.* 65, 31–42.
- Sham, M. H., Vesque, C., Nonchev, S., Marshall, H., Frain, M., Das Gupta, R., Whiting, J., Wilkinson, D., Charnay, P., and Krumlauf, R. (1993). The zinc finger gene *Krox-20* regulates *Hox-2.8* (*Hox-2.8*) during hindbrain segmentation. *Cell* 72, 183–196.
- Svaren, J., Severson, B. R., Apel, E. D., Zimonjic, D. B., Popescu, N. C., and Milbrandt, J. (1996). NAB2, a corepressor of NGFI-A (Egr-1) and Krox20, is induced by proliferative and differentiative stimuli. *Mol. Cell Biol.* 16, 3545–3553.
- Swiatek, P. J., and Gridley, T. (1993). Perinatal lethality and defects in hindbrain development in mice homozygous for a targeted mutation of the zinc finger gene Krox-20. *Genes Dev.* 7, 2071–2084.
- Swirnoff, A. H., Apel, E. D., Svaren, J., Severson, B. R., Zimonjic, D. B., Popescu, N. C., and Milbrandt, J. (1998). Nab1, a corepressor of NGFI-A (Egr-1), contains an active transcriptional repression domain. *Mol. Cell Biol.* 18, 512–524.
- Swirnoff, A. H., and Milbrandt, J. (1995). DNA-binding specificity of NGFI-A and related zinc finger transcription factors. *Mol. Cell Biol.* 15, 2275–2287.
- Thiel, G., Schoch, S., and Petersohn, D. (1994). Regulation of synapsin I gene expression by the zinc finger transcription factor zif268/egr-1. *J. Biol. Chem.* 269, 15294–15301.
- Tischmeyer, W., and Grimm, R. (1999). Activation of immediate early genes and memory formation. *Cell. Mol. Life Sci.* 55, 564–574.
- Tokuyama, W., Okuno, H., Hashimoto, T., Li, Y. X., and Miyashita, Y. (2002). Selective zif268 mRNA induction in the perirhinal cortex of macaque monkeys during formation of visual pair-association memory. *J. Neurochem.* 81, 60–70.
- Topilko, P., Levi, G., Merlo, G., Mantero, S., Desmarquet, C., Mancardi, G., and Charnay, P. (1997). Differential regulation of the zinc finger genes Krox-20 and Krox-24 (Egr-1) suggests antagonistic roles in Schwann cells. *J. Neurosci. Res.* 50, 702–712.
- Topilko, P., Schneider-Maunoury, S., Levi, G., Baron-Van Evercooren, A., Chennoufi, A. B., Seitanidou, T., Babinet, C., and Charnay, P. (1994). Krox-20 controls myelination in the peripheral nervous system. *Nature* 371, 796–799.
- Topilko, P., Schneider-Maunoury, S., Levi, G., Trembleau, A., Gourdji, D., Driancourt, M. A., Rao, C. V., and Charnay, P. (1998). Multiple pituitary and ovarian defects in Krox-24 (NGFI-A/Egr-1) targeted mice. *Mol. Endocrinol.* 12, 107–122.
- Tourtellotte, W. G., and Milbrandt, J. (1998). Sensory ataxia and muscle spindle agenesis in mice lacking the transcription factor Egr3. *Nat. Genet.* 20, 87–91.



- Weitemier, A. Z., and Ryabinin, A. E. (2004). Subregion-specific differences in hippocampal activity between delay and trace fear conditioning: an immunohistochemical analysis. *Brain Res.* 995, 55–65.
- Williams, J., Draganow, M., Lawlor, P. A., Mason, S. E., Abraham, W. C., Leah, J., Bravo, R., Demmer, J., and Tate, W. (1995). Krox20 may play a key role in the stabilisation of long-term potentiation. *Mol. Brain Res.* 28, 87–93.
- Wisden, W., Errington, M. L., Williams, S., Dunnett, S. B., Waters, C., Hitchcock, D., Evan, G., Bliss, T. V., and Hunt, S. P. (1990). Differential expression of immediate early genes in the hippocampus and spinal cord. *Neuron* 4, 603–614.
- Worley, P. F., Bhat, R. V., Baraban, J. M., Erickson, C. A., McNaughton, B. L., and Barnes, C. A. (1993). Thresholds of synaptic activation of transcription factors in hippocampus: correlation with long-term enhancement. *J. Neurosci.* 13, 4776–4786.
- Yamagata, K., Kaufmann, W. E., Lanahan, A., Papapavlous, M., Barnes, C. A., Andreasson, K. I., and Worley, P. F. (1994). Egr3/Pilot, a zinc finger transcription factor, is rapidly regulated by activity in brain neurons and colocalize with Egr-1/zif268. *Learn. Mem.* 1, 140–152.
- Yu, L., Haverty, P. M., Mariani, J., Wang, Y., Shen, H. Y., Schwarzschild, M. A., Weng, Z., and Chen, J. F. (2005). Genetic and pharmacological inactivation of adenosine A2A receptor reveals an Egr-2-mediated transcriptional regulatory network in the mouse striatum. *Physiol. Genomics* 23, 89–102.

Received: 31 March 2008; accepted: 12 May 2008.

Citation: *Front. Neurosci.* (2008) 2, 1: 47–55.  
doi: 10.3389/neuro.01.002.2008

Copyright © 2008 Poirier, Cheval, Mailhes, Garel, Charnay, Davis and Laroche. This is an open-access article subject to an exclusive license agreement between the authors and the Frontiers Research Foundation, which permits unrestricted use, distribution, and reproduction in any medium, provided the original authors and source are credited.