



OPEN ACCESS

EDITED AND REVIEWED BY

Jennifer R. Wood,
University of Nebraska System, United States

*CORRESPONDENCE

Shun-Feng Cheng,
✉ sfcheng@qau.edu.cn

[†]These authors share first authorship

RECEIVED 02 February 2025

ACCEPTED 20 February 2025

PUBLISHED 07 March 2025

CITATION

Liu W-X, Zhang Y-J, Wang Y-F, Klinger FG, Tan S-J, Farini D, De Felici M, Shen W and Cheng S-F (2025) Corrigendum: Protective mechanism of luteinizing hormone and follicle-stimulating hormone against nicotine-induced damage of mouse early folliculogenesis.
Front. Cell Dev. Biol. 13:1570067.
doi: 10.3389/fcell.2025.1570067

COPYRIGHT

© 2025 Liu, Zhang, Wang, Klinger, Tan, Farini, De Felici, Shen and Cheng. This is an open-access article distributed under the terms of the [Creative Commons Attribution License \(CC BY\)](https://creativecommons.org/licenses/by/4.0/). The use, distribution or reproduction in other forums is permitted, provided the original author(s) and the copyright owner(s) are credited and that the original publication in this journal is cited, in accordance with accepted academic practice. No use, distribution or reproduction is permitted which does not comply with these terms.

Corrigendum: Protective mechanism of luteinizing hormone and follicle-stimulating hormone against nicotine-induced damage of mouse early folliculogenesis

Wen-Xiang Liu^{1,2†}, Yan-Jie Zhang^{3†}, Yu-Feng Wang²,
Francesca Gioia Klinger⁴, Shao-Jing Tan², Donatella Farini⁴,
Massimo De Felici⁴, Wei Shen² and Shun-Feng Cheng^{1,2*}

¹College of Animal Science and Technology, Qingdao Agricultural University, Qingdao, China,

²College of Life Sciences, Institute of Reproductive Sciences, Qingdao Agricultural University, Qingdao, China, ³College of Veterinary Medicine, Qingdao Agricultural University, Qingdao, China,

⁴Department of Biomedicine and Prevention, University of Rome Tor Vergata, Rome, Italy

KEYWORDS

LH, FSH, nicotine, folliculogenesis, autophagy

A Corrigendum on

Protective mechanism of luteinizing hormone and follicle-stimulating hormone against nicotine-induced damage of mouse early folliculogenesis

by Liu W-X, Zhang Y-J, Wang Y-F, Klinger FG, Tan S-J, Farini D, De Felici M, Shen W and Cheng S-F (2021). *Front. Cell Dev. Biol.* 9:723388. doi: [10.3389/fcell.2021.723388](https://doi.org/10.3389/fcell.2021.723388)

In the published article, there was an error in [Figure 3A](#) as published. The wrong representative transmission electron microscopy (TEM) image of oocytes in follicles was used. The corrected [Figure 3](#) and its caption appear below.

The authors apologize for this error and state that this does not change the scientific conclusions of the article in any way. The original article has been updated.

Publisher's note

All claims expressed in this article are solely those of the authors and do not necessarily represent those of their affiliated organizations, or those of the publisher, the editors and the reviewers. Any product that may be evaluated in this article, or claim that may be made by its manufacturer, is not guaranteed or endorsed by the publisher.

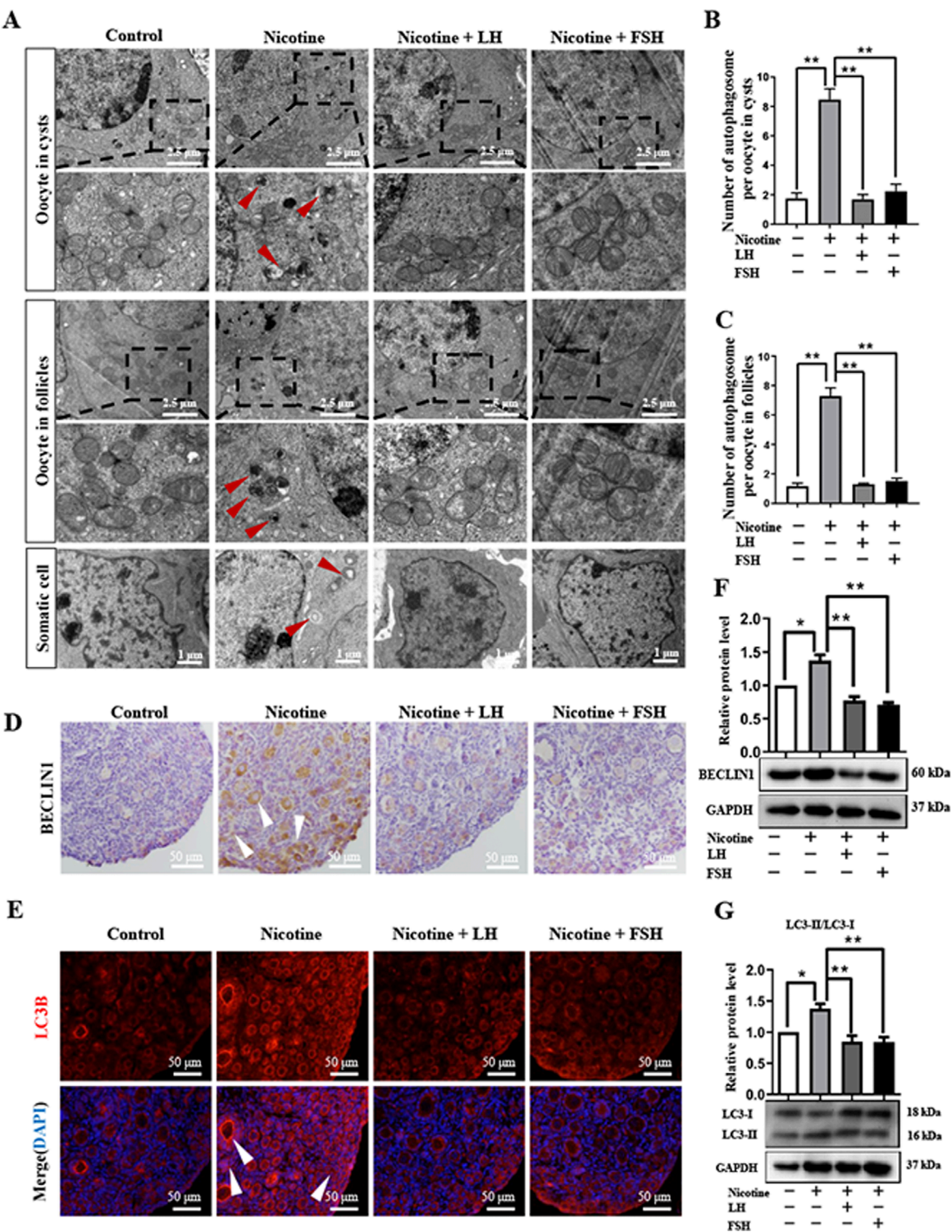


FIGURE 3
LH and FSH suppressed autophagy in nicotine-exposed ovarian cells. **(A)** Autophagosomes (red arrow) in the oocyte (cysts or follicles) and somatic cytoplasm in each group's ovaries with transmission electron microscopy (TEM). **(B)** The number of autophagosome in one oocyte in cysts of each group's ovaries (control, $n = 90$; nicotine, $n = 90$; nicotine + LH, $n = 90$; and nicotine + FSH, $n = 90$; $n =$ total number of oocytes from three replicate experiments). **(C)** The number of autophagosome in one oocyte in follicles of each group's ovaries (control, $n = 90$; nicotine, $n = 90$; nicotine + LH, $n = 90$; and nicotine + FSH, $n = 90$; $n =$ total number of oocytes from three replicate experiments; $n = 12$ newborn female pups in (A–C)). **(D)** Representative images of IHC for the BECLIN1 in tissue sections of the ovaries in each group. The white arrows indicate BECLIN1-positive somatic cells and oocytes in cysts or follicles. Scale bar, 50 μ m. **(E)** Representative image of immunofluorescence (IF) for the LC3B in tissue sections of the ovaries in each group. The white arrows indicate BECLIN1-positive somatic cells and oocytes in cysts or follicles ($n = 12$ newborn female pups in (D, E)). Scale bar, 50 μ m. **(F)** Relative protein level of BECLIN-1 in each group. **(G)** Relative protein level of LC3-II/LC3-I in each group ($n = 36$ newborn female pups in (F, G)). The data are presented as means \pm S.E. of three independent experiments (each in triplicate). * $P < 0.05$, ** $P < 0.01$.