



OPEN ACCESS

EDITED AND REVIEWED BY

Daniel Falaschi,
CONICET Argentine Institute of Nivology,
Glaciology and Environmental Sciences
(IANIGLA), Argentina

*CORRESPONDENCE

Kate Altemus Cullen,
✉ kate_cullen@berkeley.edu

RECEIVED 12 July 2025

ACCEPTED 25 August 2025

PUBLISHED 02 September 2025

CITATION

Cullen KA, Ayala Á and Spencer M (2025)
Correction: The socio-cultural implications of
glacier retreat demand further attention: a
case study from Cerro El Plomo in Santiago,
Chile.
Front. Earth Sci. 13:1664455.
doi: 10.3389/feart.2025.1664455

COPYRIGHT

© 2025 Cullen, Ayala and Spencer. This is an
open-access article distributed under the
terms of the [Creative Commons Attribution
License \(CC BY\)](https://creativecommons.org/licenses/by/4.0/). The use, distribution or
reproduction in other forums is permitted,
provided the original author(s) and the
copyright owner(s) are credited and that the
original publication in this journal is cited, in
accordance with accepted academic practice.
No use, distribution or reproduction is
permitted which does not comply with
these terms.

Correction: The socio-cultural implications of glacier retreat demand further attention: a case study from Cerro El Plomo in Santiago, Chile

Kate Altemus Cullen^{1*}, Álvaro Ayala² and Millie Spencer³

¹Energy and Resources Group, University of California, Berkeley, Berkeley, CA, United States, ²Swiss Federal Institute for Forest, Snow and Landscape Research (WSL), Birmensdorf, Switzerland,

³Department of Geography, College of Arts and Sciences, University of Colorado Boulder, Boulder, CO, United States

KEYWORDS

glacier retreat, climate change impacts, socio-cultural implications, central Chile, Andes, multi-disciplinary collaboration

A Correction on

[The socio-cultural implications of glacier retreat demand further attention: a case study from Cerro El Plomo in Santiago, Chile](#)

by Altemus Cullen K, Ayala Á and Spencer M (2025). *Front. Earth Sci.* 13:1564881. doi: 10.3389/feart.2025.1564881

There was a formatting error in [Figure 2C](#) as published. The subscript “-1” was spaced too far to the right of the y-axis label. The corrected [Figure 2C](#) appears below.

In the published article there was a typo in the abstract. The timeframe for the glacier tongue thinning was indicated as 2017–2019 instead of 2017–2022. This sentence has been corrected to:

“The mountain’s hanging glacier has retreated up the steep bedrock, with many areas of the glacier tongue thinning by 10–20 m from 2017 to 2022.”

The original article has been updated.

Generative AI statement

Any alternative text (alt text) provided alongside figures in this article has been generated by Frontiers with the support of artificial intelligence and reasonable efforts have been made to ensure accuracy, including review by the authors wherever possible. If you identify any issues, please contact us.

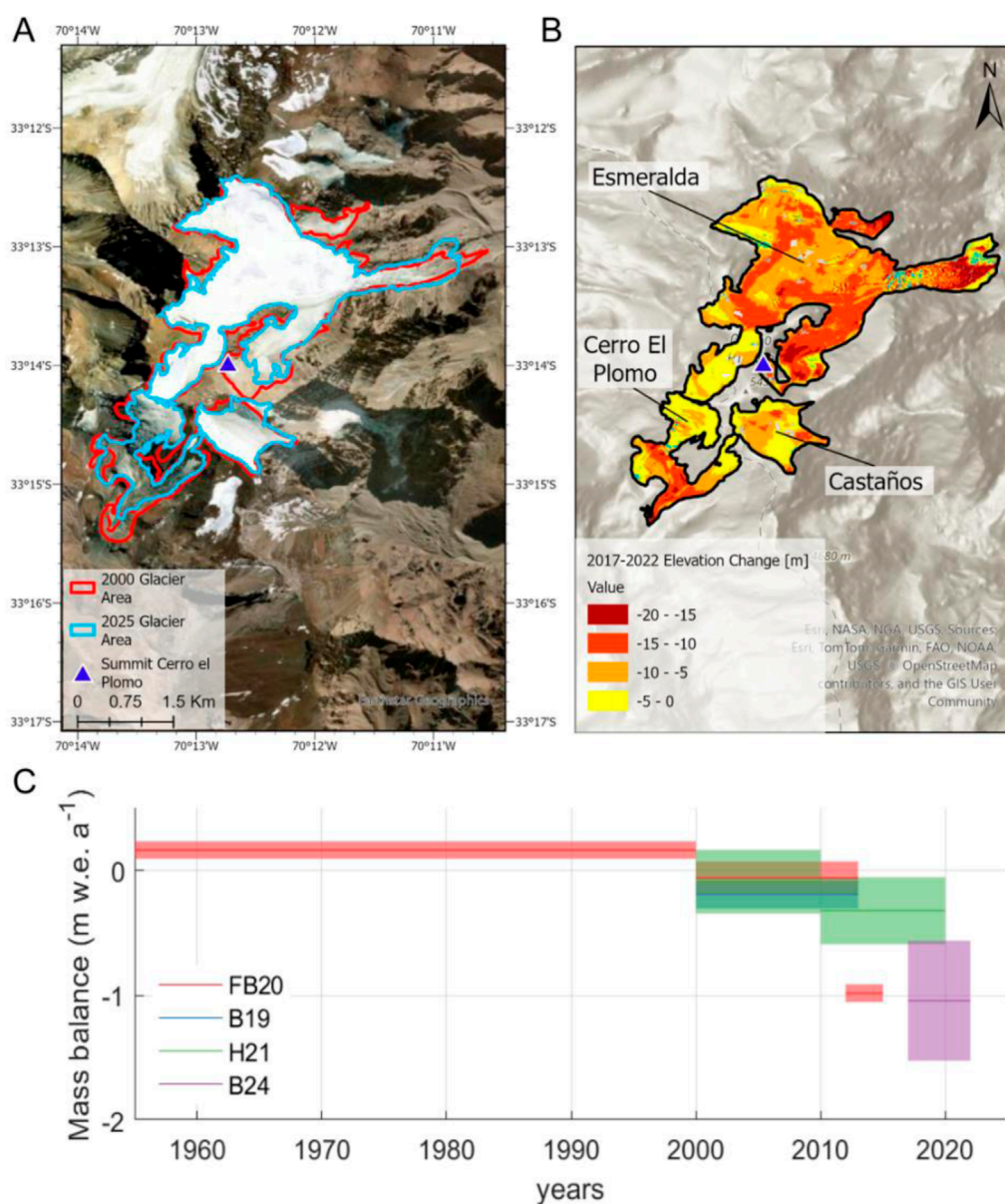


FIGURE 2

(A) Glacier area change from 2000 (DGA, 2014) to 2025 (outlines derived from a ©Airbus satellite image, 2025), overlaying Maxar® (2024) basemap, and (B) Elevation changes of the study glaciers from 2017 to 2022 as extracted from the Pleiades Glacier Observatory (PGO) (LEGOS and OMP, 2025). The glacier outlines correspond to the year 2019 (DGA, 2022). (C) Cerro El Plomo Glacier annual mass balance estimated in the studies of Farias-Barahona et al. (2020) (FB20), Braun et al. (2019) (B19), Hugonnet et al. (2021) (H21) and LEGOS and OMP, 2025 for different periods since 1955. Shaded areas show the uncertainty associated with each dataset. See the Supplementary Material for methodological details.

Publisher's note

All claims expressed in this article are solely those of the authors and do not necessarily represent those of their affiliated

organizations, or those of the publisher, the editors and the reviewers. Any product that may be evaluated in this article, or claim that may be made by its manufacturer, is not guaranteed or endorsed by the publisher.