



OPEN ACCESS

APPROVED BY
Frontiers Editorial Office,
Frontiers Media SA, Switzerland

*CORRESPONDENCE
Ewa Oleszycka
✉ ewa.oleszycka@uj.edu.pl

†PRESENT ADDRESS
Patrycja Kwiecińska,
Laboratory of Stem Cell Biology, Faculty of
Biochemistry, Biophysics, and Biotechnology,
Jagiellonian University, Kraków, Poland

RECEIVED 11 June 2025
ACCEPTED 12 June 2025
PUBLISHED 23 July 2025

CITATION
Tyshchenko M, Pocać N, Kwiecińska P,
Cichy J, Wilk MM and Oleszycka E (2025)
Correction: Endogenous SLPI contributes
to the regulation of inflammatory
responses in peritoneal macrophages by
modulating MMP-9 production.
Front. Immunol. 16:1645241.
doi: 10.3389/fimmu.2025.1645241

COPYRIGHT
© 2025 Tyshchenko, Pocać, Kwiecińska,
Cichy, Wilk and Oleszycka. This is an open-
access article distributed under the terms of
the [Creative Commons Attribution License](#)
(CC BY). The use, distribution or reproduction
in other forums is permitted, provided the
original author(s) and the copyright owner(s)
are credited and that the original publication
in this journal is cited, in accordance with
accepted academic practice. No use,
distribution or reproduction is permitted
which does not comply with these terms.

Correction: Endogenous SLPI contributes to the regulation of inflammatory responses in peritoneal macrophages by modulating MMP-9 production

Mariia Tyshchenko^{1,2}, Natalia Pocać^{1,2}, Patrycja Kwiecińska^{1†},
Joanna Cichy¹, Mieszko M. Wilk¹ and Ewa Oleszycka^{1*}

¹Department of Immunology, Faculty of Biochemistry, Biophysics, and Biotechnology, Jagiellonian University, Kraków, Poland, ²Doctoral School of Exact and Natural Sciences, Jagiellonian University, Kraków, Poland

KEYWORDS

SLPI, proteinase inhibitor, LPS, septic shock, inflammation, monocytes, peritoneal macrophages, MMP-9 (matrix metalloproteinase-9)

A Correction on

Endogenous SLPI contributes to the regulation of inflammatory responses in peritoneal macrophages by modulating MMP-9 production

By Tyshchenko M, Pocać N, Kwiecińska P, Cichy J, Wilk MM and Oleszycka E (2025) *Front. Immunol.* 16:1563845. doi: 10.3389/fimmu.2025.1563845

There was a mistake in **Figure 3** as published. The final version of **Figure 3** which included additional panel of zymography (**Figure 3G**) was not included during post-acceptance proofs and pre-peer review version of **Figure 3** was published by mistake. The correct version of **Figure 3** appears below.

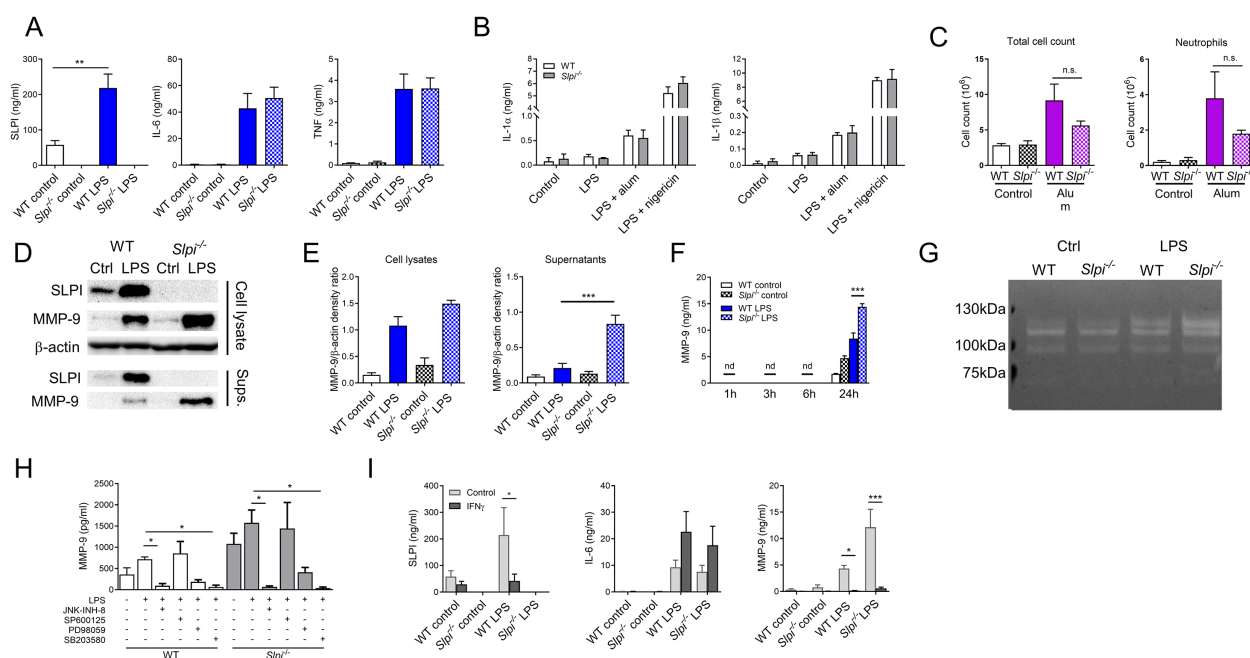


FIGURE 3

SLPI regulates MMP-9 secretion in resident peritoneal macrophages. (A) SLPI, IL-6 and TNF in supernatants of WT and *Slpi*^{-/-} resident peritoneal macrophages incubated with LPS (100 ng/ml) for 24h. WT control vs WT LPS ** $p < 0.01$ by one-way ANOVA, Tukey post hoc test. (B) IL-1α and IL-1β in supernatants of WT and *Slpi*^{-/-} peritoneal macrophages incubated with LPS (100 ng/ml) for 3 h followed by addition of alum (100 μg/ml) or nigericin (10 μM). (C) Total cell and neutrophil count in WT and *Slpi*^{-/-} mice injected i.p. with PBS or 100 μg alum for 24h. (D) Representative immunoblots of MMP-9 and SLPI in supernatants and lysates of WT and *Slpi*^{-/-} peritoneal macrophages incubated with LPS (100 ng/ml) for 24h. Samples were resolved by SDS-PAGE and probed by Western blotting. β-actin was used as loading control. (E) Densitometry analysis of (D) WT LPS vs *Slpi*^{-/-} LPS *** $p < 0.001$ by one-way ANOVA, Tukey post hoc test. (F) MMP-9 in supernatants of WT and *Slpi*^{-/-} resident peritoneal macrophages incubated with LPS (100 ng/ml) for indicated times. WT LPS vs *Slpi*^{-/-} LPS *** $p < 0.001$ by one-way ANOVA, Tukey post hoc test. (G) Representative zymography of equal volume of supernatants obtained from WT and *Slpi*^{-/-} peritoneal macrophages incubated with LPS (100 ng/ml) for 24h. Representative of four separate experiments. (H) MMP-9 in supernatants of WT and *Slpi*^{-/-} resident peritoneal macrophages incubated with DMSO or inhibitors: JNK-INH-8 (10 μM), SP600125 (20 μM), PD98059 (20 μM) or SB203580 (10 μM) for 1h followed by LPS treatment (100 ng/ml) for 24h. LPS vs LPS + inhibitor * $p < 0.05$ by one-way ANOVA, Tukey post hoc test. (I) SLPI, IL-6 and MMP-9 in supernatants of WT and *Slpi*^{-/-} resident peritoneal macrophages incubated with LPS (100 ng/ml) and IFN-γ (50 ng/ml) for 24h. Control vs IFN-γ * $p < 0.05$, *** $p < 0.001$ by multiple unpaired t-test. (A, B, F, H, I) Data are presented as the mean of three (A, B, F) or four (H, I) independent experiments. Error bars show means ± SEM. (C) Data represent 5 to 6 mice per experimental group pooled from two independent experiments. Error bars show means ± SEM.