



## OPEN ACCESS

## EDITED BY

Hailiang Tang,  
Fudan University, China

## REVIEWED BY

Chloe Dumot,  
Hospices Civils de Lyon, France  
Paolo Palmisciano,  
University of Cincinnati, United States

## \*CORRESPONDENCE

Jianguo Xu  
jianguo\_1229@126.com

†These authors have contributed  
equally to this work

## SPECIALTY SECTION

This article was submitted to  
Neuro-Oncology and Neurosurgical  
Oncology,  
a section of the journal  
Frontiers in Neurology

RECEIVED 24 July 2022

ACCEPTED 10 October 2022

PUBLISHED 10 November 2022

## CITATION

Jie D, Liu Z, He W, Wang S, Teng H and  
Xu J (2022) Clinical features,  
radiological findings, and prognostic  
factors for primary intracranial  
chordoid meningioma.  
*Front. Neurol.* 13:1002088.  
doi: 10.3389/fneur.2022.1002088

## COPYRIGHT

© 2022 Jie, Liu, He, Wang, Teng and  
Xu. This is an open-access article  
distributed under the terms of the  
[Creative Commons Attribution License  
\(CC BY\)](https://creativecommons.org/licenses/by/4.0/). The use, distribution or  
reproduction in other forums is  
permitted, provided the original  
author(s) and the copyright owner(s)  
are credited and that the original  
publication in this journal is cited, in  
accordance with accepted academic  
practice. No use, distribution or  
reproduction is permitted which does  
not comply with these terms.

# Clinical features, radiological findings, and prognostic factors for primary intracranial chordoid meningioma

Danyang Jie<sup>1,2†</sup>, Zhiyong Liu<sup>1†</sup>, Wenbo He<sup>1,2†</sup>, Shumin Wang<sup>2†</sup>,  
Haibo Teng<sup>1,2</sup> and Jianguo Xu<sup>1\*</sup>

<sup>1</sup>Department of Neurosurgery, West China Hospital of Sichuan University, Chengdu, China, <sup>2</sup>West China School of Medicine, Sichuan University, Chengdu, China

**Objectives:** Chordoid meningioma (CM) is an infrequent histologic subtype of meningiomas. Owing to its low occurrence, this subtype has been rarely described. Our subject was to explore the clinical features, radiological characteristics, and prognostic factors of primary intracranial chordoid meningioma.

**Methods:** We reviewed the medical records and collected follow-up information of 34 cases who had been surgically treated and histologically diagnosed with CM at the Department of Neurosurgery, West-China Hospital of Sichuan University, from January 2009 to December 2021.

**Results:** Among all 7,950 meningioma cases, the proportion of primary intracranial CM was 0.43% (34/7,950). The median diagnosis age was 47 (ranging from 12 to 74) and the gender ratio (male to female) was 2.1:1. For radiological features, heterogeneous enhancement, skull base, and ventricular localization, cystic degeneration and dural tail sign were common in CM cases. In treatment, gross total resection (GTR) was achieved in 22/34 cases (64.7%) and subtotal resection (STR) was achieved in 12/34 cases (35.3%). Further, 11/34 patients (32.4%) had received postoperative adjuvant radiotherapy (RT). The follow-up duration ranged from 4 to 157 months after operation. The progression rate was 20.7% (6/29) and the median of PFS was 38 months. By survival analysis, accepting adjuvant radiotherapy and achieving GTR were correlated with longer progression-free survival for prognosis.

**Conclusion:** CM is a rare subtype of meningiomas. In our series, it mainly involved adults and did not show a predilection for women compared with meningiomas in general. For a better prognosis, gross total resection and postoperative adjuvant radiotherapy are recommended. Nevertheless, due to the restriction of the series sample, patients lost for follow-up and inherent biases of a retrospective study, more cases and a shorter follow-up duration are needed for better management of chordoid meningioma.

## KEYWORDS

meningioma, chordoid meningioma, clinical features, surgical resection, prognosis

## Introduction

Meningiomas have made the most common primary tumor in the central nervous system (CNS) (1). According to the 2021 WHO Classification of Tumors of the Central Nervous System, meningiomas were still divided into three grades with 15 different subtypes or variants, and grade II and III meningiomas are classified for their high tendency to relapse (2–4).

Chordoid meningioma, a rare subtype of grade II, was initially defined as a subtype of meningiomas for its chordoma-like pathologic features by Kepes et al. (5, 6). The incidence of CM was reported to be 0.32–1.0% of all intracranial meningiomas with an incidence of 4.4 per 1,00,000 individuals per year (7–11). Due to the low incidence, the clinical, radiological, pathological, and prognostic features of CM still remain unclear and controversial. This study reviewed the clinical manifestations, radiological features, and surgical information for 34 cases pathologically diagnosed with primary intracranial CM in West China Hospital of Sichuan University (About 2,800 CNS tumors operations per year), and explored prognostic factors for this rare subtype.

## Methods

### Patient population

According to our exclusion and inclusion criteria, we reviewed the medical records of West China Hospital of Sichuan University from 2009 to 2021 and identified 34 cases diagnosed with primary intracranial chordoid meningioma. The pathological diagnosis of CM was based on the WHO 2021 Classification (5th version). The inclusion criteria were: precise histologically diagnosis of CM, intracranial location of lesions, and complete medical record information; the exclusion criteria were recurrent CM, extracranial CM, pathological diagnosis with other varieties of meningioma subtype or tumor species, and patients undergoing adjuvant radiotherapy before surgery. Histopathological evaluation was performed to validate the diagnosis of CM. The acquisition of medical records and patient information was approved by the West China Hospital Ethics Committee.

### Clinical and radiological data acquisition

The clinical manifestations were acquired from the hospital information system (HIS). Duration from hospitalization to discharge was defined as hospital day. The image data was collected from Picture Archiving and Communication System (PACS). The quality of life was assessed by Karnofsky Performance Scale (KPS) score. The pre-KPS and post-KPS were appraised by two authors, respectively at admission

and discharge. Two experienced radiologists assessed the radiological features on MRI or computed tomography (CT) scans separately. Tumor size was defined as the maximal diameter on an MRI scan. The shape of the tumor was categorized to be spherical or irregular. Globular and ellipsoidal tumors were identified as spherical shape and lobulated, branched, dumbbell-like tumors were classified as irregular ones. Peritumoral edema was assessed on T2-weight and Flair scan sequences of MRI. According to the tumor basal attachment, the location of the tumor was divided into three major groups: the skull base group mainly included the anterior skull base, sellar region, sphenoid ridge, petroclival, temporal fossa, cerebellopontine angle (CPA), foramen magnum, and clivus; the convexity group mainly included cerebral or cerebellar hemispheres lesions, falx, and sagittal sinus CM were also included; and intraventricular group incorporated tumors occurring in the lateral, third, or fourth ventricle. Homogeneous enhancement was defined as uniformly enhanced in >90% of tumors on enhanced MRI scans.

### Surgical information and pathological data

All patients involved in our study had undergone neurosurgery by routine craniotomy approach in our center. The extent of resection (EOR) was evaluated by the Simpson resection grade standard and we defined levels I and II as GTR and levels III and IV as STR. The short-termed and long-termed postoperative complications were acquired via medical records and follow-up data.

The diagnosis of CM was performed pathologically based on WHO 2021 Classification and retrospectively reviewed by two experienced pathologists, both of whom have performed neuropathological diagnosis independently for 10 years. The immunohistochemical indicators introduced into the statistical analysis were determined according to the results of univariate analysis and previous studies.

### Outcome

The follow-up information was acquired by telephone or outpatient approaches after discharge. The loss rate of follow-up was 14.7% (5/34). History of postoperative adjuvant radiotherapy (RT), postoperative complications, post-KPS, and progression-free survival (PFS) were recorded at the first time of follow-up (always 3 months after discharge). PFS was defined as the duration from surgery to tumor progression. Tumor regression included tumor regrowth and tumor relapse. The tumor regrowth was defined as residual tumor getting growth after STR and tumor relapse was defined as tumor recurring after

GTR. Hospital day (HOD) refers to the duration from accepting surgery to discharge.

## Statistical methods

All statistical analysis was performed by SPSS (version 24.0, IBM Corporation, Armonk, NY, USA). We introduced the following factors to prognostic analysis: age of surgery, gender, radiological features, history of adjuvant radiotherapy, EOR, pre- and post-KPS value, and pathological features. Kaplan-Meier curve was utilized to figure PFS and a log-rank test was conducted to assess whether there was a statistical difference between curves. Cox proportional hazards model was conducted for univariate analysis. A  $p$ -value  $< 0.05$  was considered as statistical significance. For continuous variables, we reported the mean and standard deviation of normal distribution. The median together with (25% quartile, 75% quartile) were used to report non-normal distribution. Proportions were utilized for categorical variables.

## Results

### Incidence and demographic features of CM

From January 2009 to December 2021, there were 7,950 patients with meningioma undergoing operation in the Department of Neurosurgery, West China Hospital of Sichuan University. There were only 38 cases diagnosed with intracranial chordoid meningioma pathologically. After excluding four recurrent patients, there were 34 (0.43%) cases involved in our study. For these 34 patients, the median diagnosis age was 47 (33, 60) years (ranging from 12 to 74) and the sex ratio of male to female was 2.1:1 (23/11).

### Clinical characteristics

The median interval from initial symptoms to admission and undergoing surgical intervention was 3 months (1, 18). The most frequent symptoms were headache or dizziness (20 cases, 58.8%), followed by visual or auditory impairment (14 cases, 41.2%), limb weakness (10 cases, 29.4%), and epilepsy (3 cases, 8.8%). The tumor was incidentally discovered without any symptoms during physical examination in 2 cases (5.9%).

### Radiological findings

In our series, preoperational enhanced MRI or CT scan images could be acquired in 30 cases and the other 4 cases

TABLE 1 Demographic, clinical, radiological characteristics of CM.

| <b>Overall (N = 34)</b>          |                   |
|----------------------------------|-------------------|
| <b>Demographic features</b>      |                   |
| <b>Sex</b>                       |                   |
| Male                             | 23 (67.6)         |
| Female                           | 11 (32.4)         |
| Age (median, (P25, P75))/year    | 47 (33, 60)       |
| <b>Clinical features</b>         |                   |
| Headache or dizziness            | 20 (58.8)         |
| Visual or auditory impairment    | 14 (41.2)         |
| Limb. weakness                   | 10 (29.4)         |
| Epilepsy                         | 3 (8.8)           |
| Asymptomatic                     | 2 (5.9)           |
| <b>Radiological features</b>     |                   |
| <b>Location</b>                  |                   |
| Non-skull base                   | 14 (41.2)         |
| Skull base                       | 20 (58.8)         |
| Diameter (median, (P25, P75))/mm | 36.7 (26.1, 51.9) |
| <b>Shape</b>                     |                   |
| Spherical                        | 13 (43.3)         |
| Irregular                        | 17 (56.7)         |
| <b>Boundary</b>                  |                   |
| Clear                            | 15 (50.0)         |
| Unclear                          | 15 (50.0)         |
| Peritumoral brain edema          | 10 (33.3)         |
| Dural tail sign                  | 20 (79.9)         |
| <b>Enhancement</b>               |                   |
| Homogeneous                      | 12 (46.2)         |
| Heterogeneous                    | 14 (53.8)         |
| Cystic degeneration              | 5 (16.7)          |
| Calcification                    | 7 (23.3)          |

did not receive preoperational radiological examination in our institution for being examined in other hospitals, without available radiological records for tumor features. Among the 30 cases with a radiological examination, 10 cases were located in convexity, 20 cases in the skull base, and 4 cases in a ventricle (3 cases in the lateral ventricle and 1 case in the fourth ventricle). The median of the maximal diameter of CM was 36.7 mm (26.1, 51.9), with a wide interval ranging from 19 to 82 mm. Seventeen cases were characterized as having an irregular shape (56.7%) and 15 cases were identified as unclear tumor-brain boundary (50%). Peritumoral edema were found in 10 cases (33.3%) with the extent of edema ranging from 12.7 to 48.4 mm. Cystic degeneration was found in 5 cases (16.7%). As a significant radiological feature of meningioma on enhanced MRI scan, a dural tail sign was identified in 20 cases (76.9%). CM with homogenous enhancement on the T1-weighted scan comprised 46.2% (12/26) and heterogenous enhancement comprised 53.8% (14/26). All the demographic, clinical, and radiological features are listed in [Table 1](#).

TABLE 2 Treatment and outcomes of CM.

|                               | Overall (N = 34) |
|-------------------------------|------------------|
| <b>Treatment and outcomes</b> |                  |
| <b>Extent of resection</b>    |                  |
| GTR                           | 22 (64.7%)       |
| STR                           | 12 (35.3%)       |
| Accepted radiotherapy         | 11 (32.4%)       |
| <b>Pre-KPS</b>                |                  |
| <80                           | 29 (85.3%)       |
| ≥80                           | 5 (14.7%)        |
| <b>Post-KPS</b>               |                  |
| <80                           | 12 (41.4%)       |
| ≥80                           | 17 (58.6%)       |

## Treatment and outcome

In our series, all 34 patients were treated surgically and the neurosurgical strategy was chosen due to the localization of tumor basal attachment. GTR was completed in 22 cases (64.7%) and STR in 12 cases (35.3%). Eleven patients (32.4%) received postoperative adjuvant RT. In our series, there was 1 postoperative mortality (2.9%) caused by acute brain hernia secondary to postoperative cranial hemorrhage and other 10 postoperative morbidities (29.4%): two pneumonia cases (5.9%), two intracranial infection cases (5.9%), two post-operational epilepsy cases (5.9%), one patient experienced hydrocephalus (2.9%), receiving trepanation and drainage of the ventricle, there were two cranial nerve impairment cases (5.9%) and one cranial hemorrhage (2.9%) receiving emergency craniotomy. After intravenous use of antibiotics, anti-epileptic drugs, or emergency surgery, all these patients were alleviated on discharge. No significant difference between EOR or tumor location and the presence of postoperative complications (Fisher's precision probability test,  $p = 0.714$ ,  $p = 0.467$ ) was found. The pre-KPS score ranged from 50 to 100 with a median of 60, and the post-KPS score ranged from 30 to 100 with a median of 80. There were 20 cases (69.0%) that had an improvement on the KPS after surgery while 9 cases (31.0%) saw a reduction. The median of HOD was 7.5 days (5, 13), ranging from 3 to 46 days.

## Histopathological features

Pathology on H&E staining showed that CM cells were composed of spindle or epithelioid cells characterized by myxoid basophilic matrix, arranged in chordoma-like clusters. Lymphoplasmacellular infiltrate was also a histopathological feature of CM. Immunohistochemically, the median of the MIB-1 index was 5%, and the detailed

TABLE 3 Pathological features of CM.

|                                     | Overall (N = 34) |
|-------------------------------------|------------------|
| <b>Immunohistochemical features</b> |                  |
| <b>MIB-LI</b>                       |                  |
| <5                                  | 15 (50%)         |
| ≥5                                  | 15 (50%)         |
| <b>S-100</b>                        |                  |
| Negative                            | 26 (89.7%)       |
| Positive                            | 3 (10.3%)        |
| <b>PR</b>                           |                  |
| Negative                            | 3 (13.0%)        |
| Positive                            | 20 (87.0%)       |
| <b>CD34</b>                         |                  |
| Negative                            | 17 (100%)        |
| Positive                            | 0                |

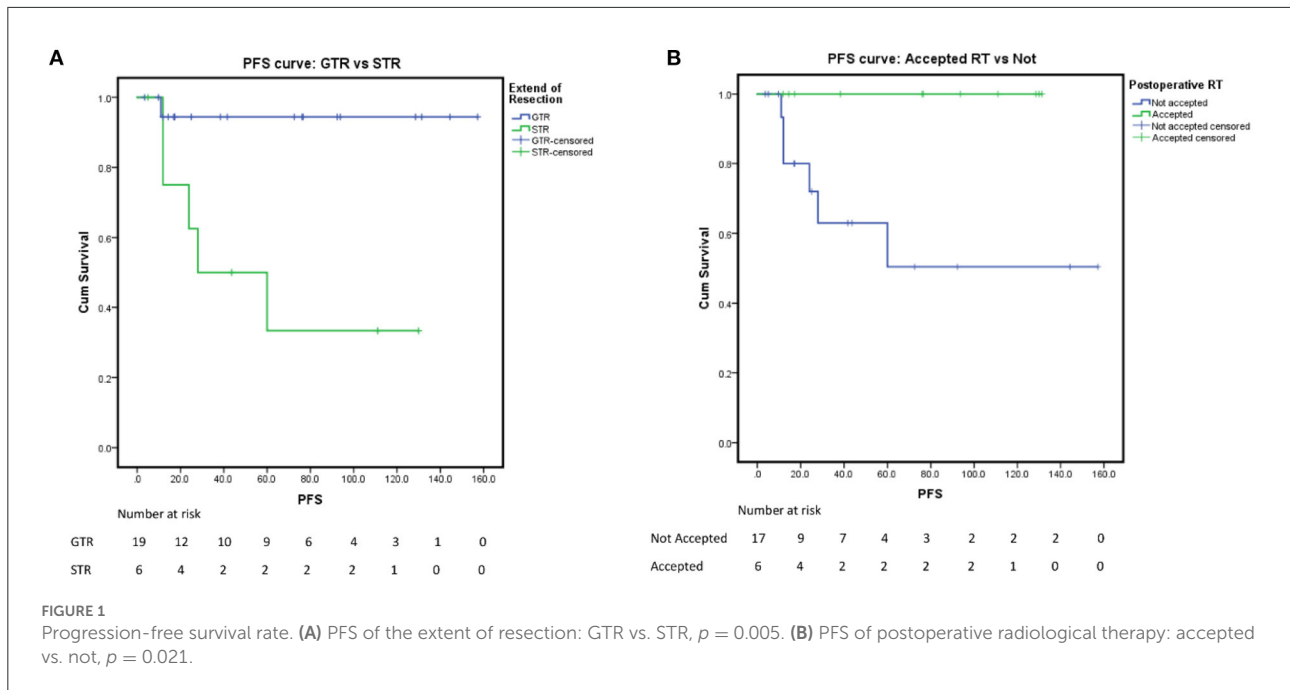
\*PR, progesterone receptor.

treatment and histopathological characteristics are listed in [Tables 2, 3](#).

## Prognosis

After excluding five patients (14.7%) lost to follow-up, we analyzed the follow-up data of the rest 29 cases. The median follow-up duration was 44 months (16, 102), ranging from 4 to 157 months. Six patients experienced tumor progression, including one relapse patient and five regrowth patients, displaying a progression rate of 20.7%, with a median of 38 months (13, 93). The 2-year PFS rate was 78% and the 5-year was 71%. In progressive cases, two patients accepted re-operation while the other four patients declined surgery or radiotherapy. After re-operation, one patient experienced multiple recurrences and chose conservative treatment then. Among these six progressive or recurrent patients, four patients (66.7%) died of tumor progression.

In our analysis for the prognostic factors of CM, we introduced patient sex, age of onset, tumor location, tumor size, tumor shape, peritumoral edema, tumor shape, tumor boundary, calcification, cystic degeneration, pre-KPS, HOD, the extent of resection, postoperative RT history, and Ki-67 into the univariate analysis. Kaplan-Meier survival analysis with log-rank test was performed for the possible prognosis according to univariate analysis. Achieving GTR and accepting adjuvant radiotherapy were related to a longer PFS (log-rank test,  $p = 0.005$ ,  $p = 0.021$ , respectively [Figures 1A,B](#)) in the log-rank test. However, the other factors we optioned showed no significant influence on the PFS of our CM series. The multivariate analysis was not performed due to the low events



number. A detailed list of patient data and factors analyzed in our study are presented in Tables 4, 5 and Figure 1. Besides, we presented two representative cases in Figures 2, 3.

## Discussions

### Incidence and clinical features

Meningiomas cause the most common primary CNS tumors (1, 12–14). Though the majority of meningiomas show a benign clinical manifestation, some rare variants are distinguished by more aggressive behavior and propensity for relapse. Initially described by Kepes et al. (6) CM has been classified to be a subtype of meningiomas. Because of its greater likelihood of recurrence and more aggressive behavior compared with other histology of meningiomas, CM has long been classified as WHO grade II. In previous studies, meningioma constituted ~39% of all CNS tumors (1) and CM only accounts for 0.32–1.0% of all meningiomas (6, 9–11, 15, 16). In our institution, primary intracranial CM accounts for 0.43% (34/7,950) of all meningiomas, paralleling the previous reports.

Meningioma has been known to have a female predominance (17, 18). The sex ratio (M:F) of CM ranged from 0.7 to 1.2 in previous literature (5, 15, 19). The ratio of 2.1 (23/11) in our series showed a predilection for men. Initially, when defined as an individual subtype of meningiomas by Kepes et al. CM was believed to have a preponderance of child cases and often be associated with systemic diseases (6, 20). Castleman syndrome (CS), a series of syndromes characterized by microcytic anemia, localized or disseminated

lymphadenopathy, polyclonal hypergammaglobulinemia, and developmental retardation, was noted to be associated with CM in the pediatric population. Such systematic abnormalities were ascribed to an overproduction of interleukin 6 (IL-6), which could disappear after the removal of the tumor (6, 20–24). In our series, neither 33 adult cases nor 1 pediatric case were connected to systematic manifestations of CS or other hematologic disorders. The absence of CS or other systematic disorders in our series may be correlated with the low incidence of CM in children. Consistent with previous literature, we found that CM mainly occurred in adults rather than children (5, 15, 16, 19, 25–28). In this study, CM was mainly exhibited as mass effect such as headache (20/34), when the anatomical localizations were adjacent to cranial nerves or cerebrum function area, CM would present cranial nerves disorders (14/34), limb weakness (10/34), or epilepsy (3/34).

### Radiological features

In this study, the most common location of CM was the base of the skull (20/34, 58.8%), followed by convexity (10/34, 29.4%), and ventricle (4/34, 11.8%). In a previous systematic review involving 221 CM cases, localization of convexity was much more common than skull base (19). Additionally, compared with meningiomas in general, the intraventricular cases were more common in CM (11.8 vs. 0.5–3%) (29, 30). Such difference may be caused by the selection bias of the positioning of our hospital as a central

TABLE 4 Data presentation of 34 cases with CM.

| No | Sex | Age | Radiological data      |                | EOR | Histopathology |    |     |      | Radiotherapy | Progression |
|----|-----|-----|------------------------|----------------|-----|----------------|----|-----|------|--------------|-------------|
|    |     |     | Location               | MRI or CT scan |     | Ki-67          | PR | EMA | GFAP |              |             |
| 1  | M   | 38  | Lateral ventricle      | YES            | GTR | 2%             | -  | +   | -    | NO           | NO          |
| 2  | M   | 28  | Convexity              | YES            | GTR | /              | -  | -   | -    | YES          | NO          |
| 3  | F   | 48  | Foramen magnum         | NO             | GTR | 5%             | /  | +   | -    | NO           | NO          |
| 4  | M   | 35  | Anterior skull base    | YES            | GTR | /              | /  | +   | -    | NO           | NO          |
| 5  | F   | 26  | Cerebellopontine angle | YES            | STR | 4%             | /  | +   | -    | YES          | NO          |
| 6  | M   | 44  | Convexity              | YES            | GTR | 4%             | +  | +   | -    | YES          | NO          |
| 7  | M   | 26  | Convexity              | YES            | STR | 8%             | /  | +   | -    | YES          | NO          |
| 8  | F   | 49  | Convexity              | YES            | STR | 10%            | +  | +   | -    | NO           | NO          |
| 9  | M   | 20  | Fourth ventricle       | YES            | GTR | 10%            | /  | +   | -    | YES          | NO          |
| 10 | F   | 47  | Clivus                 | YES            | GTR | /              | +  | +   | -    | NO           | NO          |
| 11 | M   | 71  | Convexity              | YES            | GTR | 3%             | +  | +   | -    | NO           | NO          |
| 12 | F   | 56  | Anterior skull base    | YES            | GTR | /              | /  | /   | /    | YES          | NO          |
| 13 | M   | 43  | Anterior skull base    | YES            | GTR | 3%             | +  | +   | -    | NO           | NO          |
| 14 | M   | 68  | Cerebellopontine angle | YES            | GTR | 8%             | +  | +   | /    | YES          | NO          |
| 15 | M   | 60  | Lateral ventricle      | NO             | GTR | 5%             | /  | +   | -    | YES          | NO          |
| 16 | M   | 34  | Sellar region          | YES            | GTR | 4%             | +  | +   | +    | NO           | NO          |
| 17 | M   | 57  | Convexity              | YES            | GTR | 10%            | +  | +   | -    | YES          | NO          |
| 18 | F   | 57  | Anterior skull base    | YES            | GTR | 5%             | +  | +   | -    | NO           | NO          |
| 19 | M   | 71  | Anterior skull base    | YES            | GTR | 3%             | +  | +   | -    | NO           | NO          |
| 20 | M   | 47  | Clivus                 | YES            | GTR | 3%             | +  | +   | /    | NO           | NO          |
| 21 | F   | 33  | Convexity              | YES            | GTR | 5%             | +  | +   | -    | YES          | NO          |
| 22 | M   | 47  | Anterior skull base    | YES            | GTR | 3%             | +  | +   | -    | YES          | NO          |
| 23 | F   | 40  | Clivus                 | YES            | STR | 5%             | -  | +   | -    | NO           | NO          |
| 24 | M   | 74  | Sellar region          | YES            | STR | 5%             | +  | +   | -    | NO           | YES         |
| 25 | M   | 47  | Sphenoid ridge         | YES            | STR | 2%             | +  | +   | -    | NO           | YES         |
| 26 | M   | 21  | Cerebellopontine angle | NO             | GTR | 8%             | /  | +   | +    | NO           | YES         |
| 27 | M   | 72  | Convexity              | YES            | STR | 2%             | +  | +   | -    | NO           | YES         |
| 28 | M   | 12  | Lateral ventricle      | YES            | STR | 12%            | /  | +   | -    | NO           | YES         |
| 29 | F   | 21  | Lateral ventricle      | YES            | STR | 5%             | /  | +   | -    | NO           | YES         |
| 30 | F   | 33  | Convexity              | YES            | GTR | 8%             | /  | +   | -    | NO           | LOST        |
| 31 | M   | 45  | Foramen magnum         | YES            | GTR | 4%             | +  | +   | -    | NO           | LOST        |
| 32 | F   | 61  | Anterior skull base    | NO             | STR | 3%             | +  | +   | -    | NO           | LOST        |
| 33 | M   | 65  | Temporal fossa         | YES            | STR | 3%             | +  | +   | -    | NO           | LOST        |
| 34 | M   | 60  | Sphenoid ridge         | YES            | STR | 4%             | +  | +   | -    | NO           | LOST        |

neurosurgery institution where more cases of the skull base or intraventricular underwent surgery. Our series presented a wide interval of tumor size (ranging from 19 to 82 mm), consistent with previous research (19, 31). Due to the limitation of the space of the skull base, the shapes of our series were most identified to be irregular (56.7%) and unclear tumor-brain interfaces (50%). Peritumoral edema was not mentioned much in preceding studies. The incidence of peritumoral edema in meningiomas ranged from 38 to 67.2% (32). For CM the proportion was from 26.7 to 77.8% in previous studies (16, 31, 33) and 33.3% in our series. In our series, CM cases

with heterogeneous enhancement on T1-weighted imaging comprised 53.9% (14/26), which may be related to ischemia and necrosis, calcification, or cystic degeneration of the tumor. Additionally, cystic degeneration was found to be more common in CM than overall meningiomas (16.7% vs. 2–4%) (34–36), which may be caused by hemorrhage, necrosis, or glial response (37). The radiological features of chordoid meningioma in our study can be summarized as follows: localization predilection for skull-base and ventricle, high occurrence of cystic degeneration, irregular shape, unclear interface, heterogeneous enhancement, and dural tail sign.



TABLE 5 Factors associated with PFS in CM patients.

| Variables             | Univariate      |                       | Log-rank test   |
|-----------------------|-----------------|-----------------------|-----------------|
|                       | <i>p</i> -value | HR (95% CI)           | <i>p</i> -value |
| Age (years) $\geq 55$ | 0.940           | /                     | /               |
| Female                | 0.537           | /                     | /               |
| Skull-base location   | 0.946           | /                     | /               |
| Tumor size            | 0.887           | /                     | /               |
| Irregular tumor shape | 0.384           | /                     | /               |
| Unclear boundary      | 0.674           | /                     | /               |
| Peritumoral edema     | 0.212           | /                     | /               |
| Calcification         | 0.901           | /                     | /               |
| Cystic degeneration   | 0.810           | /                     | /               |
| Pre-KPS $\geq 80$     | 0.532           | /                     | /               |
| Hospital day          | 0.479           | /                     | /               |
| Accept radiotherapy   | 0.227           | /                     | 0.021           |
| Gross total resection | 0.028           | 11.163 (1.300-95.885) | 0.005           |
| Ki-67 $\geq 5\%$      | 0.533           | /                     | /               |

## Treatment strategies and outcome

CM together with atypical meningioma and clear cell meningioma were classified into the grade II category of meningiomas for their relatively high recurrence rate (38). Previous large series have reported that achieving GTR might indicate a better prognosis (5, 6, 15, 31). Therefore, surgical resection, especially GTR, is the primary treatment and gold standard treatment for CM. While various factors hindered achieving GTR such as the complex anatomic location of the tumor, invasion of surrounding vital neurovascular structures, or immense volume of the tumor. When achieving GTR accompanies a high risk of serious complications, incomplete removal should be considered. In our series, GTR was performed in 22 cases (64.7%) with STR in 12 cases (35.3%) and that proportion was 78.2 and 21.8% in a systematic review involving 221 CM cases of Choy et al. in 2016 (19). Such difference may be caused by the adjacent complex structures with the predilection for skull base location in our series.

Due to the high recurrence of CM, 11 patients (32.6%) received postoperative adjuvant RT after surgical resection (nine GTR cases and two STR cases). In our institution, postoperative radiological therapy was recommended to WHO grade II and III meningioma patients systematically. All patients accepted RT within 1 month after discharge. While for the low adherence of patients coming from all over the country and other reasons, the rate of receiving postoperative RT was relatively low in this retrospective study. In previous studies, the benefit of postoperative adjuvant RT remains controversial (15, 16, 39, 40) thus more studies are needed to discuss the benefit of RT to patients.

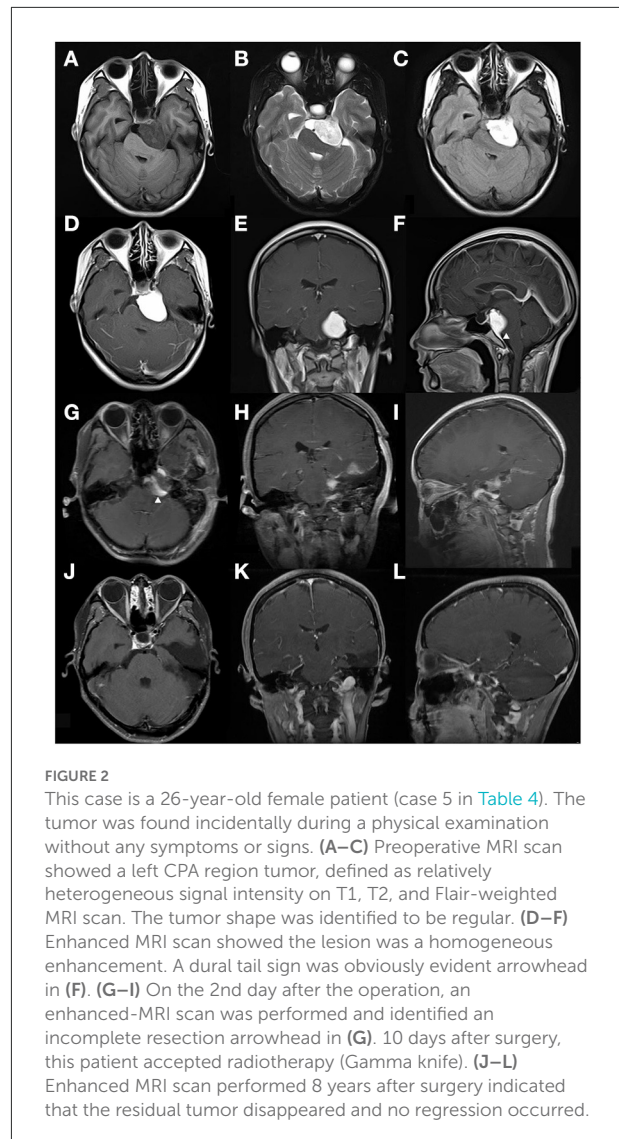


FIGURE 2

This case is a 26-year-old female patient (case 5 in Table 4). The tumor was found incidentally during a physical examination without any symptoms or signs. (A–C) Preoperative MRI scan showed a left CPA region tumor, defined as relatively heterogeneous signal intensity on T1, T2, and Flair-weighted MRI scan. The tumor shape was identified to be regular. (D–F) Enhanced MRI scan showed the lesion was a homogeneous enhancement. A dural tail sign was obviously evident arrowhead in (F). (G–I) On the 2nd day after the operation, an enhanced-MRI scan was performed and identified an incomplete resection arrowhead in (G). 10 days after surgery, this patient accepted radiotherapy (Gamma knife). (J–L) Enhanced MRI scan performed 8 years after surgery indicated that the residual tumor disappeared and no regression occurred.

## Pathological features

As a rare subtype of meningiomas, CM was characterized by chordoma-like vacuolated cells and pale basophilic matrix (5, 41). These pathological features are presented in Figure 4 and the corresponding description. Due to the histological features of CM, the mucoid quality of the matrix may facilitate tumor cells to disseminate and result in a high recurrence rate after STR (15, 39, 42, 43).

Immunohistochemically, as a proliferation marker predicting the proliferative activity of meningioma, MIB-1 expresses in nearly all stages of cell cycle except  $G_0$  (44, 45). Whether the MIB-labeling index (LI) was correlated with the prognosis of CM was still controversial. Due to recent reviews, a high MIB-LI is correlated with a high risk of tumor recurrence

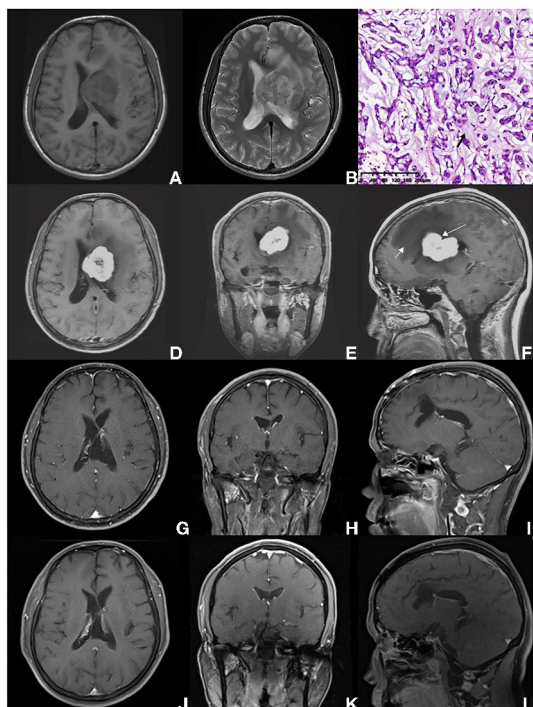


FIGURE 3

A 38-year-old male pathologically diagnosed with CM, who presented with persistent headache for 4 months without other symptoms or signs (case 1 in Table 4). (A,B) The intraventricular mass was heterogeneous, with hypointense on T1-weighted imaging, and presented hyperintense on T2-weighted MRI scan, surrounding with brain edema. (C) On HE staining, CM was composed of epithelioid cells characterized by myxoid and partly vacuolated matrix. The black arrow indicates the mucoid matrix. (D–F) Preoperative enhanced MRI scan showed an intraventricular lesion with heterogeneous enhancement. The shape of the tumor was identified to be slightly tabulated long arrow indicates in (F). Peritumoral brain edema was also found (short arrow indicates). (G–I) MRI scan performed on the 2nd day after surgery suggested the GTR was achieved. According to patient willingness, postoperative radiotherapy was not performed. (A–L) After 11-year-follow-up, an enhanced MRI scan showed no progression.

(7). This study suggested that higher MIB-LI implicated the recurrence of the tumor and the increasing WHO grade of meningioma. Besides, male sex was identified as an independent risk factor for high MIB-LI (46, 47). In our study, MIB-LI was available in 30 cases, with 15 cases <5% positive and 15 cases  $\geq$ 5% positive. The difference between the two levels of MIB-LI was not of statistical significance ( $p = 0.538$ ), and such risk factor of sex was not found. For the wide range of MIB-LI from various institutions, the value for predicting the prognosis of CM cases was uncertain (5, 16, 33). A previous study involving 30 CM cases showed a MIB-LI range of 1–10%, without relation to prognosis (15). Therefore, more cases, stricter standards, and better statistical approaches are needed. Compared with commonly positive in Grade I meningiomas and used as a risk

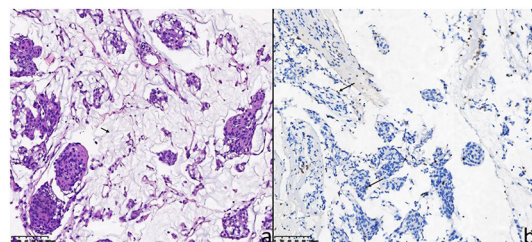


FIGURE 4

The pathological features of the 26-year-old female patient (case 5). (a) Hematoxylin-eosin staining showed chordoma-like epithelioid cells arranged in clusters with mucoid matrix (short arrow indicates mucoid matrix). (b) For the 26-year-old female patient, the Ki-67 proliferation index (MIB-1 antibody) was immunohistochemically 4% (long arrows).

predictive factor, progesterone receptor (PR) are used to be a diagnostic marker for higher grade meningioma (48, 49). Glial fibrillary acidic protein (GFAP) was found positive in 2 of 31 cases (6.5%) and to be important for the differential diagnosis of CM from gliomas and chordomas (41). GFAP was regarded to be only expressed in gliosarcomas and hemangioblastomas (50), but some studies have reported that GFAP may be sporadically positive in a few CM patients. Due to previous studies, invaded brain tissue surrounded by tumor may facilitate the positivity of GFAP. Compared with strong expression in gliomas and chordomas, the positivity of GFAP in CM is mainly dura-based and marginal (10, 31, 39, 51, 52). S-100 protein is helpful to distinguish meningioma from schwannoma (53). As a kind of single-pass transmembrane sialomucin protein, the positivity of CD34 is considered to be correlated with high microvessel density which is a risk factor for the prognosis of CM (54–56). In our series, all 17 cases available for CD34 were negative. These markers are mainly employed for the diagnosis of meningioma at present and the combination of multiple markers was proved to be more sensitive and specific for distinguishing meningioma from their morphological mimics (50).

## Prognosis

In our series, we reviewed the follow-up data of 29 (85.3%) cases after excluding 5 patients (14.7%) lost. The overall progression rate was 20.69% (6/29), in accordance with previous studies (16–42%) (5, 6, 15, 16). In a larger series, Yang et al. (31) reported a recurrence rate of 31.5% (17/54), and Wang et al. (15) reported a 19% progression rate (5/27). The most concerning prognostic factors included EOR (log-rank test,  $p = 0.005$ ) and adjuvant post-operational radiotherapy (log-rank test,  $p = 0.021$ ). Yang et al. (31) reported that only irregular tumor shape together with STR implicated the worse prognosis



in univariate analysis ( $p = 0.014$ ,  $p = 0.004$ ), without the significance of adjuvant RT ( $p = 0.154$ ).

EOR has been widely confirmed to be a critical prognostic factor of CM (5, 15, 19, 31). In our series, progression occurred, respectively in 5% of cases with GTR and 55.6% of cases with STR. According to the low progression rate and our result, GTR should be encouraged to be achieved on the premise that vital structures must be protected.

Under what circumstances adjuvant RT is required remains controversial (15, 16, 39, 40). In our institution, receiving adjuvant radiotherapy after STR is considered to be much safer and more beneficial. Additionally, post-operational RT is also recommended for all grade II and III meningiomas in our institution. There is no doubt that larger prospective studies are essential to evaluate the prognostic value of adjuvant RT for CM.

In neurosurgical operations, tumor localization may exert an influence on the difficulty and duration of the surgery, and the extent of resection also could be impacted. Similarly, age, tumor shape, tumor boundary, and tumor size may also have an influence on EOR and prognosis. Therefore, multivariate analysis is always conducted to control confounding bias among diverse factors. Nevertheless, The progression event of 6 cases was insufficient for multivariate analysis, which is essential for clarifying the prognostic factors for CM, this is a limitation of our study. Although without statistical significance in univariate analysis, postoperative RT was still considered as a prognostic factor for CM due to its  $p$ -value in log-rank test and clinical experience in our institution. In a previous study (31), STR was uniformly the only risk factor for recurrence ( $p = 0.008$ , HR 4.191). Limited by the relatively small sample size in our study, more cases are definitely needed to be involved in multivariate regression analysis and systematic review for more specific risk factors and better management of CM.

## Limitations

Our research had several limitations. Firstly, this study was conducted retrospectively so that the inherent biases and their impact on the study exist. Secondly, the sample of case series requires to be expanded and the follow-up duration needs to be prolonged to obtain more specific risky or protective factors for better management of CM. Thirdly, some radiological or pathological data were unable to acquire due to the lack of systematic management for CM cases. Furthermore, the number of patients accepting radiotherapy was small thus survival analysis may be biased, so in the future, we need to make

more standard postoperative RT criteria for CM patients. Finally, patients of our institution came from all over the nation, which resulted in relatively poor compliance for postoperative follow-up.

## Conclusion

CM is a rare subtype of meningiomas. In our series, it mainly involved adults and did not show a predilection for women compared with meningiomas in general. There were some radiological features of CM in our series: localization predilection for skull-base and ventricle, high occurrence of heterogeneous enhancement, cystic degeneration, and dural tail sign. For a better prognosis, gross total resection and postoperative adjuvant radiotherapy are recommended. Nevertheless, due to the restriction of the series sample, patient loss to follow-up, and inherent biases of retrospective study, more cases, and lower follow-up duration are needed for better management of chordoid meningioma.

## Data availability statement

The raw data supporting the conclusions of this article will be made available by the authors, without undue reservation.

## Ethics statement

Ethical review and approval was not required for the study on human participants in accordance with the local legislation and institutional requirements. Written informed consent from the patients/participants or patients/participants' legal guardian/next of kin was not required to participate in this study in accordance with the national legislation and the institutional requirements.

## Author contributions

Conception and design: JX, DJ, WH, and ZL. Data acquisition and analysis: DJ and SW. Writing and review: DJ. Research supervision: ZL and JX. Reviewed submitted version of manuscript and approved the final version of the manuscript on behalf of all authors: JX. All authors contributed to the article and approved the submitted version.

## Funding

This work was supported by the General Program of the National Natural Science Foundation of China (Grant No. 82173175), the Knowledge Innovation Program of the Chinese Academy of Sciences (Grant No. JH2022007), and 1·3·5 projects for disciplines of excellence–Clinical Research Incubation Project, West China Hospital, Sichuan University (Grant No. 2020HXFH036).

## Acknowledgments

We express our gratitude to the radiologists and pathologists who helped us.

## References

- Ostrom QT, Cioffi G, Waite K, Kruchko C, Barnholtz-Sloan JS, CBTRUS. Statistical report: primary brain and other central nervous system tumors diagnosed in the United States in 2014–2018. *Neuro Oncol.* (2021) 23:1–105. doi: 10.1093/neuonc/noab200
- Liang RF, Xiu YJ, Wang X, Li M, Yang Y, Mao Q, et al. The potential risk factors for atypical and anaplastic meningiomas: clinical series of 1,239 cases. *Int J Clin Exp Med.* (2014) 7:5696–700.
- Li D, Jiang P, Xu S, Li C, Xi S, Zhang J, et al. Survival impacts of extent of resection and adjuvant radiotherapy for the modern management of high-grade meningiomas. *J Neurooncol.* (2019) 145:125–34. doi: 10.1007/s11060-019-03278-w
- Louis DN, Perry A, Wesseling P, Brat DJ, Cree IA, Figarella-Branger D, et al. The 2021 WHO classification of tumors of the central nervous system: a summary. *Neuro Oncol.* (2021) 23:1231–51. doi: 10.1093/neuonc/noab106
- Couce ME, Aker FV, Scheithauer BW. Chordoid meningioma: a clinicopathologic study of 42 cases. *Am J Surg Pathol.* (2000) 24:899–905. doi: 10.1097/00000478-200007000-00001
- Kepes JJ, Chen WY, Connors MH, Vogel FS. “Chordoid” meningeal tumors in young individuals with peritumoral lymphoplasmacellular infiltrates causing systemic manifestations of the Castleman syndrome. A report of seven cases. *Cancer.* (1988) 62:391–406. doi: 10.1002/1097-0142(19880715)62:2<391::AID-CNCR2820620226>3.0.CO;2-7
- Mawrin C, Perry A. Pathological classification and molecular genetics of meningiomas. *J Neurooncol.* (2010) 99:379–91. doi: 10.1007/s11060-010-0342-2
- Kozler P, Benes V, Netuka D, Kramár F, Hrabal P, Charvát F. Chordoid meningioma: presentation of two case reports, review of the literature, and plea for data standardisation. *J Neurooncol.* (2008) 88:115–20. doi: 10.1007/s11060-008-9541-5
- Shino A, Nakasu S, Matsuda M, Handa J, Morikawa S, Inubushi T. Noninvasive evaluation of the malignant potential of intracranial meningiomas performed using proton magnetic resonance spectroscopy. *J Neurosurg.* (1999) 91:928–34. doi: 10.3171/jns.1999.91.6.0928
- Zhu HD, Chen H, Xie Q, Gong Y, Mao Y, Zhong P, et al. Chordoid meningioma: a retrospective study of 17 cases at a single institution. *Chin Med J.* (2013) 126:789–91.
- Kumar S, Tatke M, Husain Z. Chordoid meningioma associated with chronic subdural hematoma. *Indian Pediatr.* (1996) 33:783–5.
- Dolecek TA, Dressler EV, Thakkar JP, Liu M, Al-Qaisi A, Villano JL. Epidemiology of meningiomas post-public law 107–206: the Benign brain tumor cancer registries amendment act. *Cancer.* (2015) 121:2400–10. doi: 10.1002/cncr.29379
- Cea-Soriano L, Wallander MA, García Rodríguez LA. Epidemiology of meningioma in the United Kingdom. *Neuroepidemiology.* (2012) 39:27–34. doi: 10.1159/000338081
- Baldi I, Engelhardt J, Bonnet C, Bauchet L, Berteaud E, Grüber A, et al. Epidemiology of meningiomas. *Neurochirurgie.* (2018) 64:5–14. doi: 10.1016/j.neuchi.2014.05.006
- Wang XQ, Mei GH, Zhao L, Li ST, Gong Y, Zhong J, et al. Clinical features and treatment of intracranial chordoid meningioma: a report of 30 cases. *Histopathology.* (2013) 62:1002–17. doi: 10.1111/his.12113
- Di Ieva A, Laiq S, Nejad R, Schmitz EM, Fathalla H, Karamchandani J, et al. Chordoid meningiomas: incidence and clinicopathological features of a case series over 18 years. *Neuropathology.* (2015) 35:137–47. doi: 10.1111/neup.12174
- Ostrom QT, Cioffi G, Gittleman H, Patil N, Waite K, Kruchko C, et al. Statistical report: primary brain and other central nervous system tumors diagnosed in the United States in 2012–2016. *Neuro Oncol.* (2019) 21:v1–v100. doi: 10.1093/neuonc/noz150
- Wiemels J, Wrensch M, Claus EB. Epidemiology and etiology of meningioma. *J Neurooncol.* (2010) 99:307–14. doi: 10.1007/s11060-010-0386-3
- Choy W, Ampie L, Lamano JB, Kesavabhotla K, Mao Q, Parsa AT, et al. Predictors of recurrence in the management of chordoid meningioma. *J Neurooncol.* (2016) 126:107–16. doi: 10.1007/s11060-015-1940-9
- Kobata H, Kondo A, Iwasaki K, Kusaka H, Ito H, Sawada S. Chordoid meningioma in a child. Case report. *J Neurosurg.* (1998) 88:319–23. doi: 10.3171/jns.1998.88.2.0319
- Lee DK, Kim DG, Choe G, Chi JG, Jung HW. Chordoid meningioma with polyclonal gammopathy. Case report. *J Neurosurg.* (2001) 94:122–6. doi: 10.3171/jns.2001.94.1.0122
- Gi H, Nagao S, Yoshizumi H, Nishioka T, Uno J, Shingu T, et al. Meningioma with hypergammaglobulinemia. Case report. *J Neurosurg.* (1990) 73:628–9. doi: 10.3171/jns.1990.73.4.0628
- Loiseau H, Pedespan JM, Vital A, Marchal C, Vital C, Cohadon F. Lymphoplasmacyte-rich meningioma in a child. Case report. *J Neurosurg.* (1995) 83:1075–9. doi: 10.3171/jns.1995.83.6.1075
- Arima T, Natsume A, Hatano H, Nakahara N, Fujita M, Ishii D, et al. Intraventricular chordoid meningioma presenting with Castleman disease due to overproduction of interleukin-6. Case report. *J Neurosurg.* (2005) 102:733–7. doi: 10.3171/jns.2005.102.4.0733
- Sadashiva N, Poyuran R, Mahadevan A, Bhat DI, Somanna S, Devi BI. Chordoid meningioma: a clinico-pathological study of an uncommon variant of meningioma. *J Neurooncol.* (2018) 137:575–82. doi: 10.1007/s11060-018-2748-1
- Deen HG, Jr., Scheithauer BW, Ebersold MJ. Clinical and pathological study of meningiomas of the first two decades of life. *J Neurosurg.* (1982) 56:317–22. doi: 10.3171/jns.1982.56.3.0317
- Merten DF, Gooding CA, Newton TH, Malamud N. Meningiomas of childhood and adolescence. *J Pediatr.* (1974) 84:696–700. doi: 10.1016/S0022-3476(74)80011-9

## Conflict of interest

The authors declare that the research was conducted in the absence of any commercial or financial relationships that could be construed as a potential conflict of interest.

## Publisher's note

All claims expressed in this article are solely those of the authors and do not necessarily represent those of their affiliated organizations, or those of the publisher, the editors and the reviewers. Any product that may be evaluated in this article, or claim that may be made by its manufacturer, is not guaranteed or endorsed by the publisher.

28. He W, Liu Z, Teng H, Tang L, Jie D, Duan Z, et al. Pediatric meningiomas: 10-year experience with 39 patients. *J Neurooncol.* (2020) 149:543–53. doi: 10.1007/s11060-020-03649-8
29. Nakamura M, Roser F, Bundschuh O, Vorkapic P, Samii M. Intraventricular meningiomas: A review of 16 cases with reference to the literature. *Surg Neurol.* (2003) 59:491–503. doi: 10.1016/S0090-3019(03)00082-X
30. Pereira BJA, de Almeida AN, Paiva WS, de Aguiar PHP, Teixeira MJ, Marie SKN. Natural history of intraventricular meningiomas: systematic review. *Neurosurg Rev.* (2020) 43:513–23. doi: 10.1007/s10143-018-1019-0
31. Yang Y, Li D, Cao XY, Hao SY, Wang L, Wu Z, et al. Clinical features, treatment, and prognostic factors of chordoid meningioma: radiological and pathological features in 60 cases of chordoid meningioma. *World Neurosurg.* (2016) 93:198–207. doi: 10.1016/j.wneu.2016.03.097
32. Osawa T, Tosaka M, Nagaishi M, Yoshimoto Y. Factors affecting peritumoral brain edema in meningioma: special histological subtypes with prominently extensive edema. *J Neurooncol.* (2013) 111:49–57. doi: 10.1007/s11060-012-0989-y
33. Jee TK, Jo KI, Seol HJ, Kong DS, Lee JI, Shin HJ. Clinical features and treatment outcome of chordoid meningiomas in a single institute. *J Korean Neurosurg Soc.* (2014) 56:194–9. doi: 10.3340/jkns.2014.56.3.194
34. Worthington C, Caron JL, Melanson D, Leblanc R. Meningioma cysts. *Neurology.* (1985) 35:1720–4. doi: 10.1212/WNL.35.12.1720
35. Odake G. Cystic meningioma: report of three patients. *Neurosurgery.* (1992) 30:935–40. doi: 10.1227/00006123-199206000-00023
36. Chen TY, Lai PH, Ho JT, Wang JS, Chen WL, Pan HB, et al. Magnetic resonance imaging and diffusion-weighted images of cystic meningioma - Correlating with histopathology. *Clin Imag.* (2004) 28:10–9. doi: 10.1016/S0899-7071(03)00032-9
37. Boukobza M, Cebula H, Pop R, Kouakou F, Sadoun A, Coca HA, et al. Cystic meningioma: radiological, histological, and surgical particularities in 43 patients. *Acta Neurochir (Wien).* (2016) 158:1955–64. doi: 10.1007/s00701-016-2898-x
38. Lin JW, Ho JT, Lin YJ, Wu YT. Chordoid meningioma: a clinicopathologic study of 11 cases at a single institution. *J Neurooncol.* (2010) 100:465–73. doi: 10.1007/s11060-010-0211-z
39. Moyadi AV, Sridhar E, Gupta T, Ramadwar M. A primary optic nerve sheath chordoid meningioma. *J Clin Neurosci.* (2010) 17:397–9. doi: 10.1016/j.jocn.2009.05.035
40. Lin JW, Lu CH, Lin WC, Wu YT, Huang YJ, Shih FY, et al. Clinicopathological study of the significance of the proportion of choroid morphology in chordoid meningioma. *J Clin Neurosci.* (2012) 19:836–43. doi: 10.1016/j.jocn.2011.08.037
41. Kano T, Nakazato Y, Tamura M, Ohye C, Zama A, Saito F, et al. Ultrastructural and immunohistochemical study of an adult case of chordoid meningioma. *Brain Tumor Pathol.* (2009) 26:37–42. doi: 10.1007/s10014-009-0245-0
42. Hasegawa S, Yoshioka S, Urabe S, Kuratsu J. Rapidly enlarging chordoid meningioma with abundant mucin production. *Neuropathology.* (2006) 26:438–41. doi: 10.1111/j.1440-1789.2006.00708.x
43. Marcus HJ, Price SJ, Wilby M, Santarius T, Kirillos RW. Radiotherapy as an adjuvant in the management of intracranial meningiomas: are we practising evidence-based medicine? *Br J Neurosurg.* (2008) 22:520–8. doi: 10.1080/02688690802308687
44. Cattoretto G, Becker MH, Key G, Duchrow M, Schlüter C, Galle J, et al. Monoclonal antibodies against recombinant parts of the Ki-67 antigen. (MIB 1 and MIB 3) detect proliferating cells in microwave-processed formalin-fixed paraffin sections. *J Pathol.* (1992) 168:357–63. doi: 10.1002/path.1711680404
45. Key G, Becker MH, Baron B, Duchrow M, Schlüter C, Flad HD, et al. New Ki-67-equivalent murine monoclonal antibodies. (MIB 1-3) generated against bacterially expressed parts of the Ki-67 cDNA containing three 62 base pair repetitive elements encoding for the Ki-67 epitope. Laboratory investigation. *J Tech Methods Pathol.* (1993) 68:629–36.
46. Kurisu K. Clinical and radiological features related to the growth potential of meningioma - Comments. *Neurosurg Rev.* (2006) 29:297–297. doi: 10.1007/s10143-006-0039-3
47. Matsuno A, Fujimaki T, Sasaki T, Nagashima T, Ide T, Asai A, et al. Clinical and histopathological analysis of proliferative potentials of recurrent and non-recurrent meningiomas. *Acta Neuropathol.* (1996) 91:504–10. doi: 10.1007/s004010050458
48. Hsu DW, Efid JT, HedleyWhyte ET. Progesterone and estrogen receptors in meningiomas: prognostic considerations. *J Neurosurg.* (1997) 86:113–20. doi: 10.3171/jns.1997.86.1.0113
49. Guevara P, Escobar-Arriaga E, Saavedra-Perez D, Martinez-Rumayor A, Flores-Estrada D, Rembao D, et al. Angiogenesis and expression of estrogen and progesterone receptors as predictive factors for recurrence of meningioma. *J Neurooncol.* (2010) 98:379–84. doi: 10.1007/s11060-009-0086-z
50. Boulagnon-Rombi C, Fleury C, Fichel C, Lefour S, Bressenot AM, Gauchotte G. Immunohistochemical approach to the differential diagnosis of meningiomas and their mimics. *J Neuropath Exp Neurol.* (2017) 76:289–98. doi: 10.1093/jnen/nlx008
51. Mullasery D, O'Brien DF, Williams D, Crooks D, Mallucci C, Pizer B, et al. Malignant disseminated chordoid meningioma in a 12-year-old child: a role for early cranial and spinal radiation treatment after subtotal resection. *Child Nerv Syst.* (2006) 22:1344–50. doi: 10.1007/s00381-006-0096-5
52. Ozen O, Sar A, Atalay B, Altinors N, Demirhan B. Chordoid meningioma: Rare variant of meningioma. *Neuropathology.* (2004) 24:243–7. doi: 10.1111/j.1440-1789.2004.00551.x
53. Hahn HP, Bundock EA, Hornick JL. Immunohistochemical staining for Claudin-1 can help distinguish meningiomas from histologic mimics. *Am J Clin Pathol.* (2006) 125:203–8. doi: 10.1309/G659FVVBMG7U4RPQ
54. Nielsen JS, McNagny KM. Novel functions of the CD34 family. *J Cell Sci.* (2008) 121:3683–92. doi: 10.1242/jcs.037507
55. Barresi V, Cerasoli S, Vitarelli E, Tuccari G. Density of microvessels positive for CD105. (endoglin) is related to prognosis in meningiomas. *Acta Neuropathol.* (2007) 114:147–56. doi: 10.1007/s00401-007-0251-4
56. Wen M, Jung S, Moon KS, Pei J, Lee KH, Jin SG, et al. Immunohistochemical profile of the dural tail in intracranial meningiomas. *Acta Neurochir.* (2014) 156:2263–73. doi: 10.1007/s00701-014-2216-4