



OPEN ACCESS

EDITED AND REVIEWED BY

Paola Tognini,
Sant'Anna School of Advanced Studies, Italy

*CORRESPONDENCE

Jastyn A. Pöpplau
✉ jastyn.poepplau@zmnh.uni-hamburg.de

[†]These authors share last authorship

RECEIVED 13 August 2025

ACCEPTED 20 August 2025

PUBLISHED 01 September 2025

CITATION

Thies AM, Pochinok I, Marquardt A,
Dorofeikova M, Hanganu-Opatz IL and
Pöpplau JA (2025) Correction: Trajectories of
working memory and decision making
abilities along juvenile development in mice.
Front. Neurosci. 19:1684866.
doi: 10.3389/fnins.2025.1684866

COPYRIGHT

© 2025 Thies, Pochinok, Marquardt,
Dorofeikova, Hanganu-Opatz and Pöpplau.
This is an open-access article distributed
under the terms of the [Creative Commons
Attribution License \(CC BY\)](#). The use,
distribution or reproduction in other forums is
permitted, provided the original author(s) and
the copyright owner(s) are credited and that
the original publication in this journal is cited,
in accordance with accepted academic
practice. No use, distribution or reproduction
is permitted which does not comply with
these terms.

Correction: Trajectories of working memory and decision making abilities along juvenile development in mice

Ann Marlene Thies, Irina Pochinok, Annette Marquardt,
Maria Dorofeikova, Ileana L. Hanganu-Opatz[†] and
Jastyn A. Pöpplau^{*†}

Institute of Developmental Neurophysiology, Center for Molecular Neurobiology, Hamburg Center of Neuroscience, University Medical Center Hamburg-Eppendorf, Hamburg, Germany

KEYWORDS

working memory, decision making, mouse behavior, development, prefrontal cortex, cFos

A Correction on

Trajectories of working memory and decision making abilities along juvenile development in mice

by Thies, A. M., Pochinok, I., Marquardt, A., Dorofeikova, M., Hanganu-Opatz, I. L., and Pöpplau, J. A. (2025). *Front. Neurosci.* 19:1524931. doi: 10.3389/fnins.2025.1524931

In the published article, there was an error in [Figure 4](#) as published. Two images were wrongly used in [Figure 4](#). [Figure 4D](#) (OFC right) is same as in [Figure 4D](#) (OFC middle). [Figure 4D](#) (dSTr middle) is same as in [Figure 4D](#) (S1 left). The corrected [Figure 4](#) and its caption appear below.

The original version of this article has been updated.

Publisher's note

All claims expressed in this article are solely those of the authors and do not necessarily represent those of their affiliated organizations, or those of the publisher, the editors and the reviewers. Any product that may be evaluated in this article, or claim that may be made by its manufacturer, is not guaranteed or endorsed by the publisher.

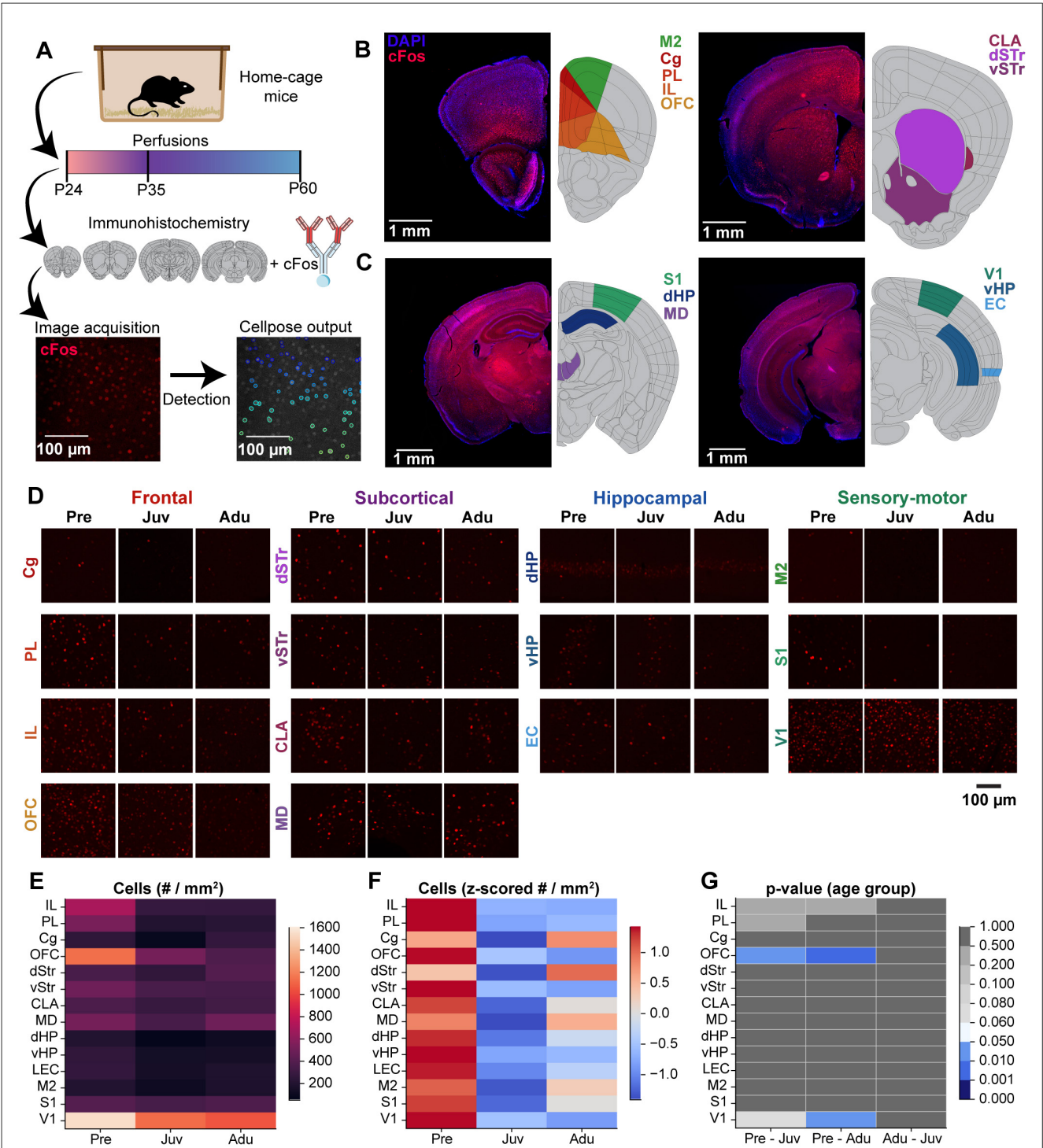


FIGURE 4
Brain-wide basal cFos expression along mouse development. **(A)** Flow chart displaying the experimental design of immunohistochemistry staining of brain slices against cFos, confocal image acquisition, and Cellpose image quantification. **(B)** Left, representative confocal images of DAPI (blue) and cFos (red) stainings (left) as well as color-coded schematic reference images from the Allen brain atlas illustrating the brain regions of interest (right, M2, Cg, PL, IL, OFC) of atlas section 37. Right, same as left for atlas section 44 including CLA, dStr, vStr. **(C)** Same as **(B)** for atlas section 74 including S1, dHP, MD (left) and for atlas section 87 including V1, vHP, EC (right). **(D)** Representative confocal images of cFos expression in frontal, subcortical, hippocampal, and sensory-motor areas from Pre, Juv, and Adu mice. **(E)** Color-coded heatmap of the number of cFos positive cells for each investigated brain area for Pre ($n = 332$ images, 4 mice), Juv ($n = 384$ images, 4 mice), and Adu ($n = 323$ images, 4 mice) mice. Data are presented as mean per brain area. **(F)** Same as **(E)** for row z-scored number of cFos positive cells. **(G)** Color-coded heatmap of statistical results of age group effects for each investigated brain area. Statistics were performed with LME models ($\# \text{ cells} \sim \text{age group} + (1 | \text{animal}) + (1 | \text{slice})$). See also Statistics table S1 for detailed statistics.