



## OPEN ACCESS

EDITED BY  
Pauline Douglas,  
Ulster University, United Kingdom

REVIEWED BY  
Vincenzo Parrino,  
University of Messina, Italy  
Audrey Valverde,  
Fonds de Dotation Clinatéc, France

\*CORRESPONDENCE  
Qixing Zhong  
✉ existenzqx@gmail.com  
Yingqian Zhang  
✉ 18190727710@163.com

†These authors have contributed  
equally to this work

SPECIALTY SECTION  
This article was submitted to  
Nutrition, Psychology and Brain  
Health,  
a section of the journal  
Frontiers in Nutrition

RECEIVED 18 July 2022

ACCEPTED 14 December 2022

PUBLISHED 06 January 2023

CITATION  
Zhao B, Jia X, Feng H, Tang C,  
Huang Y, Zhao Z, Hao J, Li H, Du J,  
Liu Y, Bao X, Zhong Z, Zhang Y and  
Zhong Q (2023) Nutrient  
combinations exhibit universal  
antianxiety, antioxidant,  
neuro-protecting,  
and memory-improving activities.  
*Front. Nutr.* 9:996692.  
doi: 10.3389/fnut.2022.996692

COPYRIGHT  
© 2023 Zhao, Jia, Feng, Tang, Huang,  
Zhao, Hao, Li, Du, Liu, Bao, Zhong,  
Zhang and Zhong. This is an  
open-access article distributed under  
the terms of the [Creative Commons  
Attribution License \(CC BY\)](https://creativecommons.org/licenses/by/4.0/). The use,  
distribution or reproduction in other  
forums is permitted, provided the  
original author(s) and the copyright  
owner(s) are credited and that the  
original publication in this journal is  
cited, in accordance with accepted  
academic practice. No use, distribution  
or reproduction is permitted which  
does not comply with these terms.

# Nutrient combinations exhibit universal antianxiety, antioxidant, neuro-protecting, and memory-improving activities

Bangcheng Zhao<sup>1†</sup>, Xiuzhen Jia<sup>2†</sup>, Haotian Feng<sup>2</sup>,  
Cheng Tang<sup>3</sup>, Yixin Huang<sup>4</sup>, Zifu Zhao<sup>2</sup>, Jingyu Hao<sup>2</sup>,  
Haoqiu Li<sup>2</sup>, Jinrui Du<sup>2</sup>, Yan Liu<sup>2</sup>, Xingyu Bao<sup>2</sup>, Zhihui Zhong<sup>1,5</sup>,  
Yingqian Zhang<sup>1,5\*</sup> and Qixing Zhong<sup>1,3\*</sup>

<sup>1</sup>Laboratory of Non-Human Primate Disease Modeling Research, State Key Laboratory of Biotherapy, West China Hospital, Sichuan University, Chengdu, China, <sup>2</sup>Inner Mongolia Dairy Technology Research Institute Co., Ltd., Yili Innovation Center, Inner Mongolia Yili Industrial Group Co., Ltd., Hohhot, China, <sup>3</sup>Sichuan SAFE Pharmaceutical Technology Co., Ltd., Chengdu, China, <sup>4</sup>Department of Biological Sciences, College of Biological Science and Technology, Agricultural University of Hunan, Changsha, China, <sup>5</sup>Sichuan Kangcheng Biotech Co., Inc., Chengdu, China

Anxiety disorders are the most common mental disorders and, without proper treatment, may lead to severe conditions: e.g., somatic disorders or permanent damage to central nervous system. Although there are drugs in clinical trials, this study focuses on exploring the efficacy of nutrients in treating these diseases. We built different zebrafish models and screened several nutrient combinations for their antianxiety, antioxidant, neuro-protecting, and memory-improving activities. Our results showed that the combinations of nutrients (e.g., Walnut Peptides + Theanine at 14.2 + 33.3 µg/ml) have similar or better activities than the positive control drugs. In addition, we discovered that the effects of the nutrients in the above four aspects were universal and highly related. This study is noteworthy as it suggested that nutrients could be healthier and greener drug alternatives and provide similar or better universal treatments for anxiety and related conditions.

## KEYWORDS

nutrients, zebrafish, antianxiety, antioxidant, neuroprotection, memory-improving

## 1. Introduction

Anxiety disorders are the most common mental disorders that generally begin before or during early adulthood. Major characteristics of anxiety disorder include excessive fear and anxiety about threats or their prevention. In this condition, the brain circuits that respond to danger are dysfunctional. Anxiety disorders are influenced

by genetic, environmental factors and epigenetic interactions. It is also common for anxiety disorders to be comorbid with other somatic disorders and mental disorders (e.g., depression) (1). Unlike the state of anxiety, anxiety disorders impair individuals' daily life performance, resulting in high costs of public health care worldwide (2). According to the ICD-10 classification, there are eight types of anxiety disorders. Among them, specific (isolated) phobias are the most common anxiety disorders, with a 12-month prevalence of 10.3%, followed by social anxiety disorder (SAD, also called social phobia; 2.7%) and general anxiety disorder (GAD; 2.2%) (3, 4). While there continues to be extensive research on treating other mental disorders (e.g., depression and schizophrenia) (5), new treatments for anxiety disorders are still needed.

In addition, anxiety disorders are known to be associated with brain damage (6). Effective brain-protective strategies are thus needed during the disease's progression. Up to now, no specific drug is available to remission the symptoms of these diseases. Nevertheless, nutritional samples supplemented with food extracts were reported to have such effects recently (7). In addition, studies have shown that nutrients can often outperform drugs in achieving health goals as they do without any side effects, with which prescription drugs are often riddled (8). Recently, the use of nutrients such as tryptophan, vitamin B6, B12, folic acid, and glutamic acid has drawn much attention in the research of anti-depression and antianxiety (7, 9). Despite this, identifying more nutrients for their antianxiety and neuroprotective activities is still needed and requires low-cost and high-throughput screening techniques (9).

In this study, we built anxiety, oxidative stress (OS), nervous system injury (NSI), and Alzheimer's disease (AD) zebrafish models. With these models, we investigated several nutrients and combinations for their antianxiety, antioxidant, neuro-protecting and memory-improving capabilities. Our results demonstrated that using nutrient combinations (e.g., Walnut Peptides + Theanine at 14.2 + 33.3  $\mu\text{g/ml}$ ) as healthier and greener drug alternatives could provide similar or better universal treatments for anxiety and related conditions.

## 2. Materials and methods

### 2.1. Experimental model animals

In this study, wild-type AB strain zebrafish were bred in natural pairs. Zebrafish aged four days post-fertilization (dpf) were chosen for antianxiety activities and memory-improving [responsiveness and acetylcholinesterase (AChE) production] evaluation. Zebrafish aged one dpf were used to evaluate the samples' protective abilities to the central nervous system (CNS). Translucence melanin allele of Albino-type zebrafish bred in natural pairs aged three dpf were used to evaluate the antioxidant efficacy.

All zebrafish were raised in 28°C fish farming water (water quality: 200 mg of instant sea salt per 1 L reverse osmosis water, conductivity: 450–550  $\mu\text{S/cm}$ ; pH: 6.5–8.5; hardness: 50–100 mg/L  $\text{CaCO}_3$ ) as culture, license number of experimental animals used: SYXK (Zhejiang) 2022-0004. The feeding practice was carried out following the requirements of the international AAALAC certification (certification number: 001458).

### 2.2. Model establishment and grouping

The anxiety zebrafish model was established by adding 1-(3-chlorophenyl) piperazine hydrochloride (mCPP, 20.0  $\mu\text{g/ml}$ , 1 h incubation at 28°C and washed off) (10, 11). After that, in the positive drug group, Selegiline was added (20.0  $\mu\text{g/ml}$ , 24 h incubation at 28°C). The OS model was established by adding menadione (2.25  $\mu\text{M}$ , 22 h incubation at 28°C) to the culture. In the positive drug group, N-Acetyl-L-cysteine (NAC) was also added (62.5  $\mu\text{g/ml}$ , 22 h incubation at 28°C). The zebrafish NSI model was established by adding Mycophenolate mofetil (0.4  $\mu\text{M}$ , 48 h incubation at 28°C) to the culture. In the positive drug group, Glutathione was also added (615  $\mu\text{g/ml}$ , 48 h incubation at 28°C). The zebrafish AD model was established by adding aluminum chloride (140  $\mu\text{M}$ , 24 h incubation at 28°C) to the culture. Donepezil hydrochloride was also added to the positive drug group (3.33  $\mu\text{g/ml}$ , 24 h incubation at 28°C). The nutrients in each test were incubated under the same condition as their respective positive drug group. The control (blank control, culture-only) was set up simultaneously with the other groups.

### 2.3. Sample information

Four positive drugs were used in this experiment: Selegiline, NAC, Glutathione, and Donepezil hydrochloride are commercially available synthetic chemicals. The nutrients, including Stachyose, Lactic acid bacteria-*Lactobacillus Plantarum* (PS128), Walnut Peptide (WP), Desert Cistanche (DC), and Theanine (Th) were all plant extracts. Casein Peptides (CP) were originated from milk proteins. All the nutrients are commercially available. Their combinations were nutrient samples with determined concentrations. The names and concentrations of the positive drugs, individual nutrients and combinations tested were summarized in **Table 1**. Their doses in zebrafish and the estimated doses in humans were also listed.

### 2.4. Zebrafish behavioral test

In this test, four dpf wild-type AB zebrafish were randomly selected and raised in the six-well plates with 30 fish per well (for

TABLE 1 The names, origins and doses of the samples tested.

Group	Name	Origin	Human dose (estimated)	Zebrafish dose ( $\mu\text{g/ml}$ )
<b>Positive drugs</b>	Selegiline	Chemical substance (Orion Corporation, Finland)	N.A.	20
	N-acetyl-L-cysteine (NAC)	Chemical substance (Shanghai Aladdin Biochemical Technology Co., Ltd)	N.A.	62.5
	Glutathione	Chemical substance (Sigma)	N.A.	615
	Donepezil hydrochloride	Chemical substance (Eisai China Inc.)	N.A.	3.33
<b>Nutrients</b>	Stachyose	The plant extract, a galactose derivative of sucrose (Xi'an APP-Chem (Tech) Co., Ltd)	3 g/day	500
	Lactic acid bacteria- <i>Lactobacillus Plantarum</i> (PS 128)	Traditional fermented mustard products of Taiwan (Asian Probiotics and Prebiotics corporation)	$1.8 \times 10^{12}$ CFU/g	1,000
	Walnut peptides (WP)	The plant extract, bioactive peptide extracted from the protein of walnut residues (Sinphar group Co.)	0.75 g/day	125
	Desert cistanche (DC)	The plant extract, tonic traditional Chinese medicine (Sinphar group Co.)	0.75 g/day	125
	Casein peptides (CP)	Milk (Guangdong Huapeptides Biotechnology Co., Ltd.)	0.6 g/day	100
	Theanine (Th)	The natural amino acid in green tea (Shanghai Novanat Co., Ltd)	400 mg/day	66.6
	<b>Combinations</b>	Stachyose + PS128	N.A.	$0.5 \text{ g/day} + 9 \times 10^{11} \text{ CFU/g}$
$1.5 \text{ g/day} + 9 \times 10^{11} \text{ CFU/g}$				$250 + 500$
$3 \text{ g/day} + 9 \times 10^{11} \text{ CFU/g}$				$500 + 500$
WP + DC		N.A.	$0.375 + 0.375 \text{ g/day}$	$62.5 + 62.5$
			$0.1875 + 0.562 \text{ g/day}$	$31.2 + 93.7$
			$0.562 + 0.1875 \text{ g/day}$	$93.7 + 31.2$
WP + CP		N.A.	$0.085 + 0.15 \text{ g/day}$	$14.2 + 25$
			$0.17 + 0.3 \text{ g/day}$	$28.4 + 50$
			$0.34 + 0.6 \text{ g/day}$	$56.7 + 100$
WP + Th		N.A.	$85 + 200 \text{ mg/day}$	$14.2 + 33.3$
			$170 + 400 \text{ mg/day}$	$28.4 + 66.6$

N.A., not applicable, CFU, colony-forming unit.

all groups). After treatments, all zebrafish were transferred into a 96-well plate (one tail/well) and 200  $\mu\text{l}$  of culture solution was added to each well. A behavioral analyzer was then used to detect the total moving distance of zebrafish for further analysis.

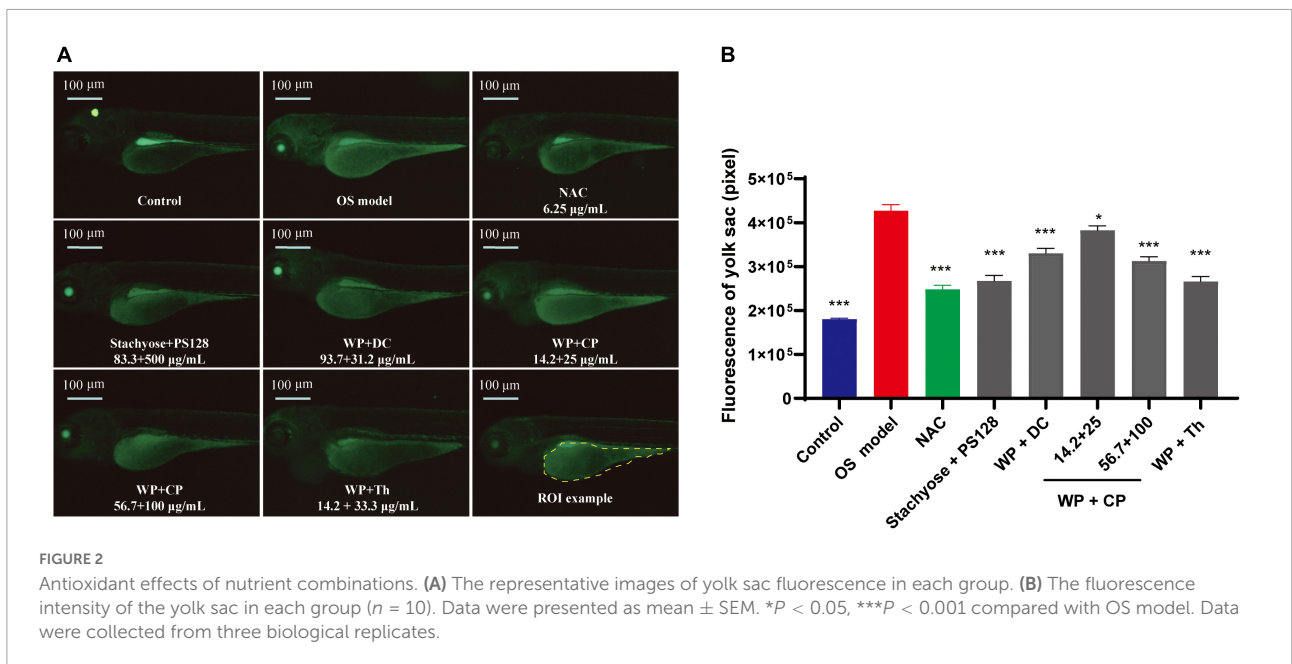
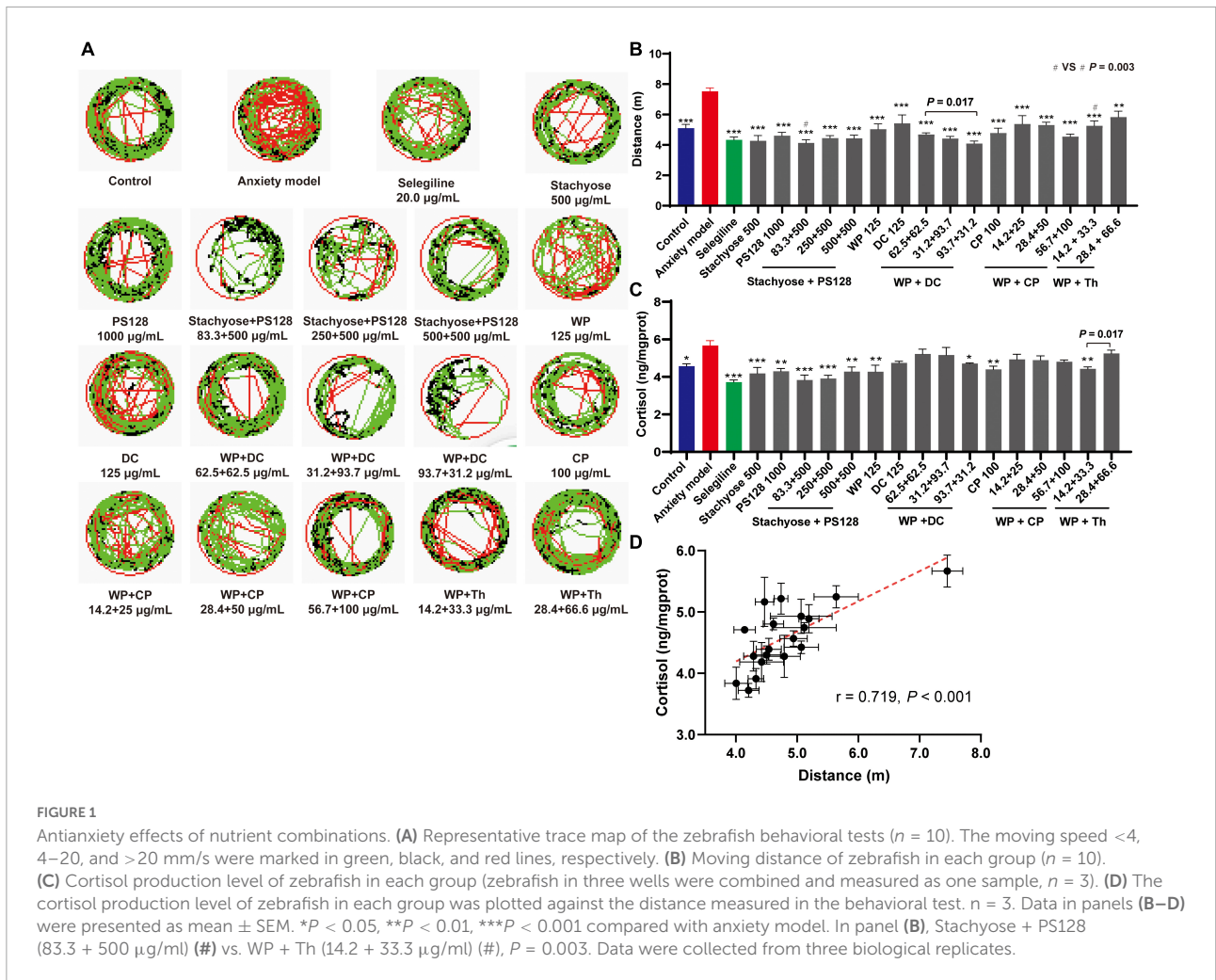
## 2.5. Cortisol production measurement

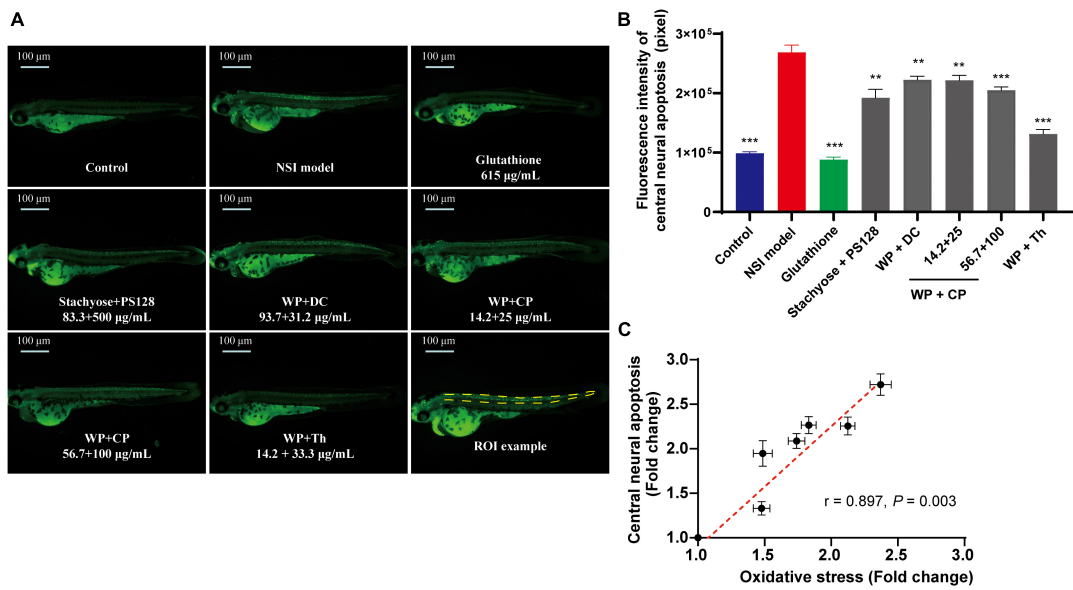
In this test, the wild-type AB strain zebrafish of four dpf were randomly selected and raised in the six-well plate, with 30 zebrafish per well (for all groups). After treatments, the cortisol concentration of zebrafish (three replicates per treatment) was measured using the enzyme-linked immunosorbent assay (ELISA kit, [Supplementary Table 1](#):

Instruments and consumables). The data were then collected and analyzed.

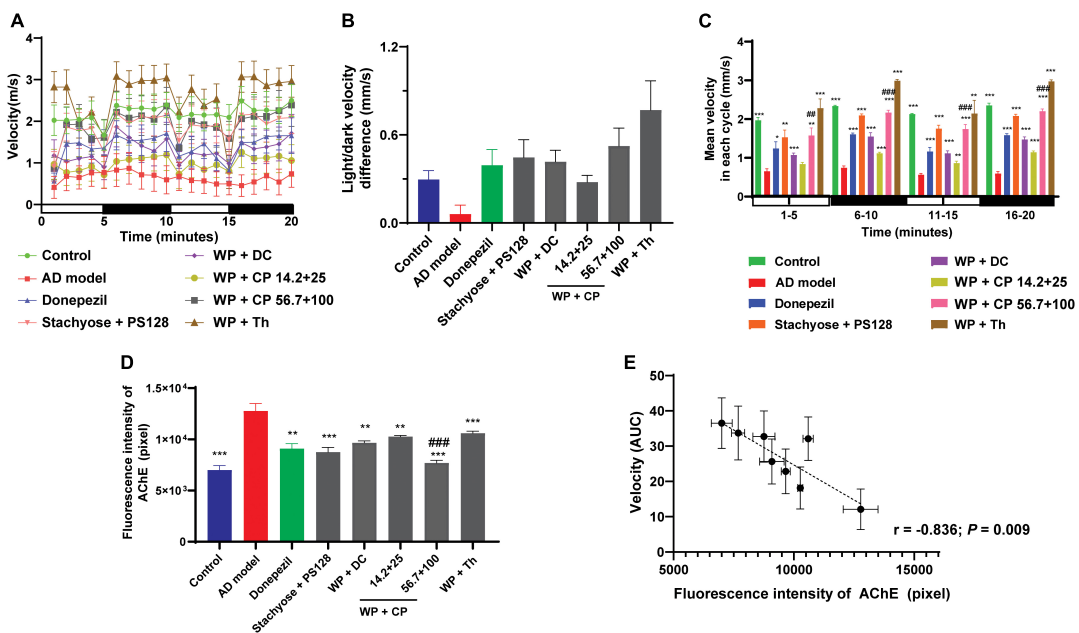
## 2.6. Antioxidant effect evaluation

The translucent albino zebrafish with three dpf melanin allele mutations were randomly selected and raised in six-well plates. Thirty zebrafish were kept in each well (for all groups). After treatments, zebrafish were transferred into 24-well plates and stained with specific reactive oxygen species (ROS) fluorescent dye. After staining, 10 zebrafish were randomly selected from each test group and placed under a fluorescence microscope for imaging. Nis-elements D 3.20

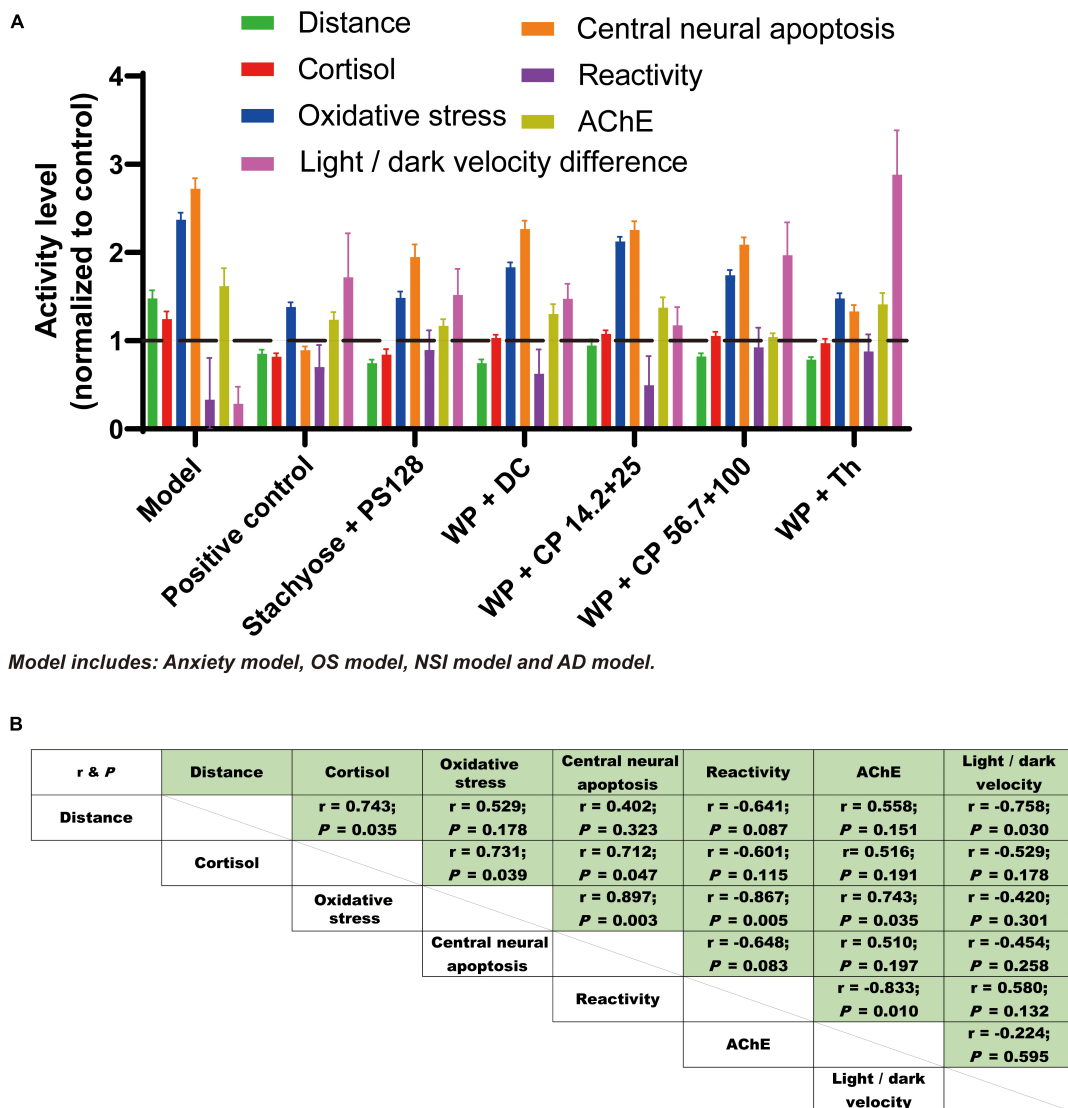




**FIGURE 3** Central neuroprotective effect of nutrient combinations. **(A)** The representative fluorescence images of central neural apoptosis in zebrafish. **(B)** The quantification of fluorescence intensity of central neural apoptosis in each group.  $n = 10$ ,  $**P < 0.01$ ,  $***P < 0.001$ . **(C)** The oxidative stress (from **Figure 2B**, value was normalized to the control) was plotted against the central neural apoptosis level (normalized to the control), ( $r = 0.897, P = 0.003$ ). Data in panels **(B,C)** were presented as mean  $\pm$  SEM.  $**P < 0.01$ ,  $***P < 0.001$  compared with NSI model. Data were collected from three biological replicates.



**FIGURE 4** Memory-improving effects of nutrients. **(A)** The lines represented the average moving speed of zebrafish per minute under light and in dark environments for 20 min ( $n = 12$ ). **(B)** The difference in velocity in light (0–5 and 10–15 min) and dark (5–10 and 15–20 min) was measured ( $n = 12$ ). **(C)** The histogram of zebrafish's average movement velocity in each cycle (5 min per cycle,  $n = 12$ ). **(D)** The fluorescence intensity of AChE in each group ( $n = 6$ ). **(E)** The intensity of AChE was plotted against the AUC of the mean velocity from panel **(A)** ( $n = 6, r = -0.836, P = 0.009$ ). Data in panels **(B,C)** were presented as mean  $\pm$  SEM.  $*P < 0.05$ ,  $**P < 0.01$ ,  $***P < 0.001$  compared with AD model;  $###P < 0.001$ ,  $####P < 0.001$  compared with WP + CP (14.2 + 25 µg/ml). Data were collected from three biological replicates.



**FIGURE 5**  
The effects of nutrient combinations were universal and related. (A) Results of all the effects from the test groups were consolidated and presented in bar chart. The four models, including anxiety, OS, NSI and AD, were shown as "Model" for short. Data were normalized to the control (value of which was normalized to 1) of each test and presented as mean ± SEM. (B) The effects tested from test groups were plotted against each other. The r-value and P-value of each plot are shown in panel (B).

advanced image processing software was used for analysis. The fluorescence intensity at the zebrafish yolk sac was measured for further analysis.

## 2.7. CNS protective effect evaluation

Zebrafish of the wild-type AB strain of one dpf were randomly selected and raised in six-well plates with 30 zebrafish per well (for all groups). After treatments, zebrafish were stained with acridine orange (AO, [Supplementary Table 1](#): Instruments and consumables). After staining, 10 zebrafish were randomly

selected from each group and placed under a fluorescence microscope for imaging. Images were processed by Nis-elements D 3.20 advanced image processing software. After that, the fluorescence intensity in the zebrafish CNS was measured.

## 2.8. Memory improvement

### 2.8.1. Responsiveness

The wild-type AB strain of four dpf zebrafish was randomly selected and raised in 6-well plates, 30 zebrafish per well (for all groups). After treatments, 10 zebrafish in each group

were randomly selected and studied. The behavioral analyzer measured the zebrafish's average moving speed per minute under light and in dark environments for further analysis.

### 2.8.2. AChE measurement

Zebrafish of the wild-type AB strain of four dpf were randomly selected and raised in six-well plates with 30 zebrafish per well (for all groups). After treatments, an AChE assay kit was used to analyze zebrafish by ELISA. The AChE-fluorescence value was measured for further analysis.

## 2.9. Statistical analysis

Statistical analysis was conducted using SPSS v.20 software (IBM Ltd., UK). Data following normal distributions were represented as means  $\pm$  standard errors of the mean (SEM). Differences among groups were analyzed by one-way ANOVA, followed by the *post hoc* Tukey Dunnett's multiple comparison test. In the non-parametric test, the Kruskal–Wallis single-factor ANOVA test (K samples) was used. Comparative analysis of the two groups: independent *t*-tests and non-parametric tests were used for normal distributions. Mann–Whitney tests were used for non-normal distributions. The correlations between each effect were analyzed statistically by Pearson's correlation. The area under curve (AUC) of velocity in 20 min was used for correlations between reactivity and other effects. When putting all the indexes together in one graph, we normalized every index to control to compare the full impact of each combination. *P* values less than 0.05 were considered significant in all analyses. Data were collected from at least three biological replicates.

## 3. Results

### 3.1. The nutrient combinations exhibited antianxiety effects

We used mCPP to increase zebrafish's anxiety-like behaviors and stimulate the production of cortisol (10, 12). The zebrafish's movement (representative trace maps in **Figure 1A** and **Supplementary Figure 1A**) reflected the zebrafish's anxiety level (13). From the results in **Figure 1B** and **Supplementary 1B**, the distance in the model group was significantly longer than the control ( $P < 0.001$ ), indicating that the zebrafish anxiety model was effectively established. As expected, zebrafish exhibited a shorter distance in the Selegiline (an irreversible monoamine oxidase (MAO)-B inhibitor that increases 5-HT levels) (14) group than in the model or the control. Based on the preliminary screening (**Supplementary Figure 1B**), we selected several nutrients and their combinations for further tests.

**Figure 1B** revealed that all the individual nutrients and combinations exhibited shorter distances than the model group, indicating their antianxiety effects. Among them, Stachyose at

500  $\mu\text{g}/\text{mL}$  was the most effective nutrient, with comparable activity to the positive drug. For the combinations, firstly, we noticed that when the ratio of WP + DC was adjusted based on weight (1:1, 1:3, and 3:1), their effects varied and, at 93.7 + 31.2  $\mu\text{g}/\text{ml}$  (this concentration was selected for downstream tests) showed the highest capability which is comparable to the positive drug. Secondly, the effects of the combinations were dose-specific but not dose-dependent in all groups. For instance, in Stachyose + PS128 group and WP + Th group, the increase of both components' concentrations did not promote their antianxiety capabilities. Thus, in Stachyose + PS128 and WP + Th groups we selected the lowest concentrations (83.3 + 500 and 14.2 + 33.3  $\mu\text{g}/\text{ml}$ , Stachyose + PS128 is more effective,  $P = 0.003$ , **Figure 1B**) for downstream tests. Nevertheless, the concentration increases in the combination of WP + CP promoted the antianxiety effect, showing a preliminary dose dependence.

The production of cortisol in each group was also measured to show the zebrafish's anxiety level (15). As expected, most tested nutrients and combinations showed lower cortisol levels than the model group, with Stachyose + PS128 (83.3 + 500  $\mu\text{g}/\text{ml}$ ) being the most effective combination (**Figure 1C**). Surprisingly, specific concentrations of WP + DC and WP + CP combinations did not inhibit the production of cortisol, which was not consistent with the zebrafish's moving distance. Despite this, a positive correlation ( $r = 0.719$ ,  $P < 0.001$ ) was still observed between the distance and the cortisol level (**Figure 1D**), showing that the antianxiety effects assessments were reliable.

### 3.2. The nutrient combinations were effective in antioxidation

It was reported that biological processes such as oxidative stress are partly affected by mood states (16). Therefore, we continued to investigate the antioxidant effects of the nutrients. Menadione was used to induce oxidative stress, which triggered green fluorescence expression in the yolk sac of zebrafish (**Figure 2A**). The increase in fluorescence intensity represents a decrease in antioxidant function (17). The intensity (**Figure 2B**) was observed to be much higher in the model than in the control, indicating that the model establishment was successful. All the combinations showed antioxidant effects. Although none of them could recover the model to the level of the control, Stachyose + PS128 and WP + Th combinations showed similar effects as the positive control drug NAC, a glutathione precursor, which modulates glutamatergic transmission and targets oxidative pathways (18). Their antioxidant effects were also affected by concentrations: in WP + CP, the higher concentration at 56.7 + 100  $\mu\text{g}/\text{ml}$  was more effective than the lower concentration, indicating a preliminary dose-dependence (**Figure 2B**).

### 3.3. The nutrient combinations showed central neuroprotective effects

It was also reported that there are links between anxiety, oxidative stress and neuron damage (19, 20). Thus, we continued to investigate the central neuroprotective effect of nutrients. Mycophenolate mofetil was used to induce NSI in zebrafish, which triggered green fluorescence (Figure 3A) in apoptotic cells at CNS (21). Firstly, in the model group, the fluorescence intensity (Figure 3B) was almost three times higher than the control, showing the model establishment was successful. Secondly, the combination of WP + Th showed the strongest activity in reducing central neural apoptosis, close to the positive drug Glutathione, whose depletion is a common feature of apoptotic cell death (22). Unlike the antianxiety tests, the other combinations (WP + DC, WP + CP, and Stachyose + PS128) exhibited a similar but much lower protective effect than WP + Th. A preliminary dose-dependent effect was observed in WP + CP and further tests with more concentrations are needed. Noteworthy, when we plotted the antioxidant effect of the nutrients against their central neural apoptosis level, a good positive correlation was established ( $r = 0.897$ ,  $P = 0.003$ , Figure 3C), showing that both effects from the nutrients were highly related.

### 3.4. The nutrient combinations improved zebrafish's memory

Apart from the above tests, we further investigated the memory-improving abilities of the nutrients, as anxiety was reported to cause memory damage (23). During model establishment, aluminum chloride was used to build zebrafish's AD model: Excessive intake of aluminum chloride causes toxic effects on the nervous system, resulting in abnormal zebrafish behavior (24). It also destroys the cholinergic nerve function, increases the production of amyloid, reduces learning ability and causes memory loss (24, 25). Donepezil hydrochloride, an AChE inhibitor, was used as the positive drug in this test. The nutrients' memory-improving abilities were evaluated by measuring the velocity of zebrafish using the response capability test (26). From the graph shown in Figure 4A, the mean velocity of the model group was the lowest of all, demonstrating the effectiveness of the modeling. The results showed that the nutrients improved the mean velocity, which was slower and less stable under light (0–5 and 10–15 min) than in the dark (5–10 and 15–20 min). WP + CP significantly improved zebrafish's response capability, with a preliminary concentration-dependent effect. It is noteworthy that WP + Th showed the most substantial capability in improving velocity, even recovered to a higher level than the control.

Furthermore, zebrafish with nervous system damage were reported to have slower swimming speed; But after treatment,

their swimming speed was recovered with the stimulation of light-dark alternation (27). Consistent with this report, the difference in velocity between light and dark was much higher in nutrient combinations (e.g., WP + Th) than in the model (Figure 4B). The mean velocity was further broken down into cycles of 5 min in Figure 4C. The patterns of the results in each period were similar, further proved that the effects of nutrients in the shorter period are consistent. Another crucial memory-improving index was the production of AChE (28), the intensity of which (Figure 4D) confirmed the effectiveness of all the combinations, with WP + CP at a higher concentration being the most effective. When we plotted the AChE intensity against the AUC of the mean velocity of all groups, a good negative correlation was observed ( $r = -0.836$ ,  $P = 0.009$ , Figure 4E), indicating the memory-improving assessments were reliable.

### 3.5. The effects of nutrient combinations were universal and highly-related

With all these data in hand, we further analyzed the relationships between different effects of the nutrient combinations. The results of all effects were consolidated in Figure 5A, from which we observed that the pattern of the effects from test groups are similar and most of the nutrients improved their respective models. Among them, WP + Th was almost the most promising in all tests. When the value of individual effect was plotted against each other, good correlations (17 out of 21 have absolute  $r$  value larger than 0.5, representative plots were shown in Supplementary Figure 2) were observed (Figure 5B), suggesting the effects of the nutrient combinations were universal and highly related.

## 4. Discussion

In this study, we used different zebrafish models to identify nutrient combinations as potential drug alternatives for treating anxiety and related conditions. In the antianxiety test, Stachyose + PS128 (83.3 + 500  $\mu\text{g/ml}$ ) exhibited similar capability (Figures 1B, C) as the positive drug Selegiline. Stachyose is a soluble carbohydrate that works as a probiotic that reduces the negative impacts on antibiotic-destroyed microbiota (29) and improves long-term potentiation impairment caused by stress through the gut-brain axis (30). PS128 improved stress, anxiety and insomnia in humans (31). It could serve as a therapeutic adjuvant for treating major depressive disorder (32). These effects might be related to ameliorated inflammation and oxidative stress through microbiota modulation and related metabolites (33). In preliminary screening, PS128 at 500  $\mu\text{g/ml}$  showed an antianxiety effect (Supplementary Figure 1), and Stachyose is reported to be an absorption enhancer (34).



Therefore, we speculate that PS128 is the more effective component while Stachyose plays an auxiliary role.

In the downstream antioxidant, neuro-protecting and memory-improving tests, three positive drugs rescued their respective models via different mechanisms of action. Our study showed that WP + Th, with a relatively lower concentration of 14.2 + 33.3  $\mu\text{g/ml}$ , was the most effective in the above three tests, with similar or better activities than these drugs. WP has been reported to promote sleep quality by regulating neurotransmitters in the brain tissue in mice (35). It could also enhance memory, cognition and improve sleep quality in clinical trials (36). Th, a non-protein amino acid abundantly present in tea leaves, has a similar structure as glutamate and glutamine that has been shown to improve anxiety, sleep and cognitive function, as well as reduce oxidative stress (37). The mechanism might be associated with its cerebro-protective effect, the neuroprotective effect and its glutamine carrier for inhibiting the combination of extracellular glutamine with neurons (38) or regulating the gamma-aminobutyric acid (GABA) receptor (39). We thus speculate that WP + Th might have a synergistic regulatory effect on neurotransmitters in the brain. Furthermore, in the aluminum chloride-induced AD model, the WP + Th group showed the best memory-improving abilities, even better than the control (Figures 5A–C), indicating WP + Th may have a potential effect on improving memory in other animals or even in the human context, which implies a great commercial value in the memory-improving food market.

In this study, we found a significantly high correlation between distance and light/dark velocity (Figure 5B), which was in line with the previous research (40). Oxidative stress is the essential pathophysiological process in hypoxia and aging. It causes glial activation, neurodegeneration, neurotransmitter/receptor dysregulation and induces CNS disorders (depression, anxiety, and dementia) (41). In our study, positive correlations were also found between oxidative stress and central neural apoptosis, as well as oxidative stress and AChE level, indicating that oxidative stress, central neural apoptosis and AChE production were reciprocal causation in the anxiety process. Noteworthy, not in many studies were these four effects studied together, let alone analyzing the correlations between them. In the following studies, we will further investigate the relationships between these four effects and the causation.

Zebrafish are widely used in CNS-related studies as they have human-like CNS: similar main structure of the brain, identical physiology and neurochemistry, etc. (42). Studies also compared the zebrafish and mouse models of anxiety. They also proved the predictive power of zebrafish for behavioral research (43). Since mammals are more genetically and physiologically similar to humans (44), further animal studies using rodents and large animals are also needed prior to human trials.

As most animal behavioral tests are subjective and unstable (45), using different behavioral tests to evaluate and recognize

emotions is recommended. However, due to time constraints, only two behavioral tests were used in this study to assess anxiety and memory loss. We couldn't perform more cognitive tests like the novel dark diving test, the T-maze test, or the object recognition test. In the following rodents experiment, we would select more behavioral tests to evaluate the nutrients and combinations on anxiety, recognition and memory.

## Data availability statement

The original contributions presented in this study are included in the article/Supplementary material, further inquiries can be directed to the corresponding authors.

## Author contributions

XJ, YZ, and QZ designed the experiments. BZ, CT, YH, JD, and XB performed the experiment. HF and ZiZ analyzed the data. ZhZ, JH, HL, and YL contributed to the reagents, nutrients, and nutrient combinations. BZ, YZ, and QZ prepared the manuscript. All authors have read and approved the final manuscript.

## Conflict of interest

XJ, HF, ZiZ, JH, HL, JD, YL, and XB are employed by Inner Mongolia Yili Industrial Group Co., Ltd. CT and QZ are employed by Sichuan SAFE Pharmaceutical Technology Co., Ltd. ZhZ and YZ are employed by Sichuan Kangcheng Biotech Co., Inc.

The remaining authors declare that the research was conducted without any commercial or financial relationships construed as a potential conflict of interest.

## Publisher's note

All claims expressed in this article are solely those of the authors and do not necessarily represent those of their affiliated organizations, or those of the publisher, the editors and the reviewers. Any product that may be evaluated in this article, or claim that may be made by its manufacturer, is not guaranteed or endorsed by the publisher.

## Supplementary material

The Supplementary Material for this article can be found online at: <https://www.frontiersin.org/articles/10.3389/fnut.2022.996692/full#supplementary-material>

## References

- Henning M, Subic-Wrana C, Wiltink J, Beutel M. Anxiety disorders in patients with somatic diseases. *Psychosom Med.* (2020) 82:287–95. doi: 10.1097/psy.0000000000000779
- Penninx B, Pine D, Holmes E, Reif A. Anxiety disorders. *Lancet.* (2021) 397:914–27. doi: 10.1016/s0140-6736(21)00359-7
- Bandelow B, Werner A, Kopp I, Rudolf S, Wiltink J, Beutel M. The German guidelines for the treatment of anxiety disorders: first revision. *Eur Arch Psychiatry Clin Neurosci.* (2022) 272:571–82. doi: 10.1007/s00406-021-01324-1
- Kessler R, Petukhova M, Sampson N, Zaslavsky A, Wittchen H. Twelve-month and lifetime prevalence and lifetime morbid risk of anxiety and mood disorders in the United States. *Int J Methods Psychiatr Res.* (2012) 21:169–84. doi: 10.1002/mpr.1359
- U.S. National Library of Medicine. *Anxiety Disorder Clinical Trials [Internet]*. (2022). Available online at: [https://clinicaltrials.gov/ct2/results?cond=Anxiety+Disorder&age\\_v=&gndr=&type=&rslt=&Search=Apply](https://clinicaltrials.gov/ct2/results?cond=Anxiety+Disorder&age_v=&gndr=&type=&rslt=&Search=Apply) (accessed July 10, 2022).
- Mah L, Szabuniewicz C, Fiocco A. Can anxiety damage the brain? *Curr Opin Psychiatry.* (2016) 29:56–63. doi: 10.1097/ycp.0000000000000223
- Kris-Etherton P, Petersen K, Hibbeln J, Hurley D, Kolick V, Peoples S, et al. Nutrition and behavioral health disorders: depression and anxiety. *Nutr Rev.* (2021) 79:247–60. doi: 10.1093/nutrit/naaa025
- Rebecca Freese MD. *Root Cause Medicine Health Coaching [Internet]*. (2022). Available online at: <https://www.rebeccafreesemd.com/blog/prescription-drugs-vs-nutrition-lifestyle> (accessed Jun 18, 2022).
- Norwitz N, Naidoo U. Nutrition as metabolic treatment for anxiety. *Front Psychiatry.* (2021) 12:598119. doi: 10.3389/fpsy.2021.598119
- Hackler E, Turner G, Gresch P, Sengupta S, Deutch A, Avison M, et al. 5-Hydroxytryptamine<sub>2C</sub> receptor contribution to m-chlorophenylpiperazine and N-methyl-beta-carboline-3-carboxamide-induced anxiety-like behavior and limbic brain activation. *J Pharmacol Exp Ther.* (2007) 320:1023–9. doi: 10.1124/jpet.106.113357
- Mingzhu D, Jiaqi S, Jiali Z, Xiaoyu Z, YiQiao X, Yong Z, et al. *A Method to Test the Efficacy of Health Food in Relieving Anxiety*. CN112136726B *People's Republic of China*. Beijing: State Intellectual Property Office (2022).
- Jaremka L, Glaser R, Loving T, Malarkey W, Stowell J, Kiecolt-Glaser J. Attachment anxiety is linked to alterations in cortisol production and cellular immunity. *Psychol Sci.* (2013) 24:272–9. doi: 10.1177/0956797612452571
- Buccafusco JJ editor. *Frontiers in neuroscience. Methods of Behavior Analysis in Neuroscience*. Boca Raton, FL: CRC Press/Taylor & Francis (2009).
- Kasai S, Yoshihara T, Lopatina O, Ishihara K, Higashida H. Selegiline ameliorates depression-like behavior in mice lacking the CD157/BST1 gene, a risk factor for Parkinson's disease. *Front Behav Neurosci.* (2017) 11:75. doi: 10.3389/fnbeh.2017.00075
- Tu X, Li Y, Chen Q, Shen Y, Liu Z. Tributyltin enhanced anxiety of adult male zebrafish through elevating cortisol level and disruption in serotonin, dopamine and gamma-aminobutyric acid neurotransmitter pathways. *Ecotoxicol Environ Saf.* (2020) 203:111014. doi: 10.1016/j.ecoenv.2020.111014
- Rowland T, Perry B, Upthegrove R, Barnes N, Chatterjee J, Gallacher D, et al. Neurotrophins, cytokines, oxidative stress mediators and mood state in bipolar disorder: systematic review and meta-analyses. *Br J Psychiatry.* (2018) 213:514–25. doi: 10.1192/bjp.2018.144
- Bladen C, Kozlowski D, Dynan W. Effects of low-dose ionizing radiation and menadione, an inducer of oxidative stress, alone and in combination in a vertebrate embryo model. *Radiat Res.* (2012) 178:499–503. doi: 10.1667/rr3042.2
- Mocelin R, Marcon M, D'Ambros S, Mattos J, Sachtet A, Siebel A, et al. N-acetylcysteine reverses anxiety and oxidative damage induced by unpredictable chronic stress in zebrafish. *Mol Neurobiol.* (2019) 56:1188–95. doi: 10.1007/s12035-018-1165-y
- Shal B, Khan A, Naveed M, Ullah Khan N, Ihsan Ul H, D AlSharari S, et al. Effect of 25-methoxy hispidol A isolated from *Poncirus trifoliata* against bacteria-induced anxiety and depression by targeting neuroinflammation, oxidative stress and apoptosis in mice. *Biomed Pharmacother.* (2019) 111:209–23. doi: 10.1016/j.biopha.2018.12.047
- Dong X, Lu K, Lin P, Che H, Li H, Song L, et al. *Saccharina japonica* ethanol extract ameliorates depression/anxiety-like behavior by inhibiting inflammation, oxidative stress, and apoptosis in dextran sodium sulfate induced ulcerative colitis mice. *Front Nutr.* (2021) 8:784532. doi: 10.3389/fnut.2021.784532
- Zhou M, Chen J, Meng K, Zhang Y, Zhang M, Lu P, et al. Production of bioactive recombinant human fibroblast growth factor 12 using a new transient expression vector in *E. coli* and its neuroprotective effects. *Appl Microbiol Biotechnol.* (2021) 105:5419–31. doi: 10.1007/s00253-021-1430-8
- Franco R, Cidlowski J. Apoptosis and glutathione: beyond an antioxidant. *Cell Death Differ.* (2009) 16:1303–14. doi: 10.1038/cdd.2009.107
- Nephew B, Chumachenko S, Forester B. The role of anxiety in the integrative memory model. *Behav Brain Sci.* (2020) 42:e293. doi: 10.1017/s0140525x19001900
- Kaur K, Narang R, Singh S. AICl induced learning and memory deficit in zebrafish. *Neurotoxicology.* (2022) 92:67–76. doi: 10.1016/j.neuro.2022.07.004
- Roberts A, Bill B, Glanzman D. Learning and memory in zebrafish larvae. *Front Neural Circuits.* (2013) 7:126. doi: 10.3389/fncir.2013.00126
- Senger M, Seibt K, Ghisleni G, Dias R, Bogo M, Bonan C. Aluminum exposure alters behavioral parameters and increases acetylcholinesterase activity in zebrafish (*Danio rerio*) brain. *Cell Biol Toxicol.* (2011) 27:199–205. doi: 10.1007/s10565-011-9181-y
- Steenbergen P, Richardson M, Champagne D. Patterns of avoidance behaviours in the light/dark preference test in young juvenile zebrafish: a pharmacological study. *Behav Brain Res.* (2011) 222:15–25. doi: 10.1016/j.bbr.2011.03.025
- Braida D, Ponzoni L, Martucci R, Sparatore F, Gotti C, Sala M. Role of neuronal nicotinic acetylcholine receptors (nAChRs) on learning and memory in zebrafish. *Psychopharmacology.* (2014) 231:1975–85. doi: 10.1007/s00213-013-3340-1
- Xi M, Zhao S, Ge W, Chen Y, Cui X, Sun Q. Effects of stachyose on the intestinal microbiota and barrier in antibiotic-treated mice. *J Funct Foods.* (2021) 83:104493. doi: 10.1016/j.jff.2021.104493
- Huang Y, Li D, Wang C, Sun N, Zhou W. Stachyose alleviates corticosterone-induced long-term potentiation impairment via the gut-brain axis. *Front Pharmacol.* (2022) 13:799244. doi: 10.3389/fphar.2022.799244
- Wu S, Wu C, Tsai P, Cheng L, Hsu C, Shan I, et al. Psychobiotic supplementation of PS128(TM) improves stress, anxiety, and insomnia in highly stressed information technology specialists: a pilot study. *Front Nutr.* (2021) 8:614105. doi: 10.3389/fnut.2021.614105
- Chen H, Kuo P, Hsu C, Chiu Y, Liu Y, Lu M, et al. Psychophysiological effects of *Lactobacillus plantarum* PS128 in patients with major depressive disorder: a preliminary 8-week open trial. *Nutrients.* (2021) 13:3731. doi: 10.3390/nu13113731
- Huang W, Pan C, Wei C, Huang H. *Lactobacillus plantarum* PS128 improves physiological adaptation and performance in triathletes through gut microbiota modulation. *Nutrients.* (2020) 12:2315. doi: 10.3390/nu12082315
- Li W, Huang D, Gao A, Yang X. Stachyose increases absorption and hepatoprotective effect of tea polyphenols in high fructose-fed mice. *Mol Nutr Food Res.* (2016) 60:502–10. doi: 10.1002/mnfr.201500547
- Chen X, Jia X, Zhang Y, Zhao Z, Hao J, Li H, et al. The combined use of gamma-aminobutyric acid and walnut peptide enhances sleep in mice. *Ann Palliat Med.* (2021) 10:11074–82. doi: 10.21037/apm-21-2798
- Yeh A, Chao C, Huang W, Lin H, Wang C. Walnut (*Juglans regia* L.) oligopeptide effects on enhancing memory, cognition and improving sleep quality in teenagers and elderly people in a randomized double-blind controlled trial. *Nat Prod Commun.* (2022) 17:1934578X221089065. doi: 10.1177/1934578X221089065
- Türközü D, Şanlıer N. L-theanine, unique amino acid of tea, and its metabolism, health effects, and safety. *Crit Rev Food Sci Nutr.* (2017) 57:1681–7. doi: 10.1080/10408398.2015.1016141
- Kakuda T. Neuroprotective effects of theanine and its preventive effects on cognitive dysfunction. *Pharmacol Res.* (2011) 64:162–8. doi: 10.1016/j.phrs.2011.03.010
- Zhang Y, Jia X, Chen X, Liu Y, Zhao Z, Hao J, et al. L-theanine and neumexin mixture improves sleep quality and modulates brain neurotransmitter levels in mice. *Ann Palliat Med.* (2021) 10:4572–81. doi: 10.21037/apm-21-663

40. LeDoux J, Daw N. Surviving threats: neural circuit and computational implications of a new taxonomy of defensive behaviour. *Nat Rev Neurosci.* (2018) 19:269–82. doi: 10.1038/nrn.2018.22
41. Mendiola A, Ryu J, Bardehle S, Meyer-Franke A, Ang K, Wilson C, et al. Transcriptional profiling and therapeutic targeting of oxidative stress in neuroinflammation. *Nat Immunol.* (2020) 21:513–24. doi: 10.1038/s41590-020-0654-0
42. Kalueff A, Echevarria D, Stewart A. Gaining translational momentum: more zebrafish models for neuroscience research. *Prog Neuropsychopharmacol Biol Psychiatry.* (2014) 55:1–6. doi: 10.1016/j.pnpbp.2014.01.022
43. Maciag M, Michalak A, Skalicka-Wozniak K, Zykubek M, Ciszewski A, Budzynska B. Zebrafish and mouse models for anxiety evaluation – A comparative study with xanthotoxin as a model compound. *Brain Res Bull.* (2020) 165:139–45. doi: 10.1016/j.brainresbull.2020.09.024
44. Howe K, Clark M, Torroja C, Torrance J, Berthelot C, Muffato M, et al. The zebrafish reference genome sequence and its relationship to the human genome. *Nature.* (2013) 496:498–503. doi: 10.1038/nature12111
45. Li Q, Zhao B, Li W, He Y, Tang X, Zhang T, et al. Effects of repeated drug administration on behaviors in normal mice and fluoxetine efficacy in chronic unpredictable mild stress mice. *Biochem Biophys Res Commun.* (2022) 615:36–42. doi: 10.1016/j.bbrc.2022.05.041