



OPEN ACCESS

EDITED BY

Bartosz Sekula,
Lodz University of Technology, Poland

REVIEWED BY

Milosz Ruszkowski,
Polish Academy of Sciences, Poland
Tomáš Koval,
Institute of Biotechnology (ASCR), Czechia
Zhipu Luo,
Soochow University, China

*CORRESPONDENCE

Lesa J. Beamer
✉ beamerl@missouri.edu

RECEIVED 19 June 2024

ACCEPTED 31 July 2024

PUBLISHED 19 August 2024

CITATION

Owuocha LF, Mitchum MG and Beamer LJ
(2024) Structural insights into binding of
polyglutamylated tetrahydrofolate by serine
hydroxymethyltransferase 8 from soybean.
Front. Plant Sci. 15:1451839.
doi: 10.3389/fpls.2024.1451839

COPYRIGHT

© 2024 Owuocha, Mitchum and Beamer. This is an open-access article distributed under the terms of the [Creative Commons Attribution License \(CC BY\)](https://creativecommons.org/licenses/by/4.0/). The use, distribution or reproduction in other forums is permitted, provided the original author(s) and the copyright owner(s) are credited and that the original publication in this journal is cited, in accordance with accepted academic practice. No use, distribution or reproduction is permitted which does not comply with these terms.

Structural insights into binding of polyglutamylated tetrahydrofolate by serine hydroxymethyltransferase 8 from soybean

Luckio F. Owuocha¹, Melissa G. Mitchum² and Lesa J. Beamer^{1*}

¹Department of Biochemistry, University of Missouri, Columbia, MO, United States, ²Department of Plant Pathology and Institute of Plant Breeding, Genetics, and Genomics, University of Georgia, Athens, GA, United States

Tetrahydrofolate and its derivatives participate in one-carbon transfer reactions in all organisms. The cellular form of tetrahydrofolate (THF) is modified by multiple glutamate residues and polyglutamylation plays a key role in organellar and cellular folate homeostasis. In addition, polyglutamylation of THF is known to increase the binding affinity to enzymes in the folate cycle, many of which can utilize polyglutamylated THF as a substrate. Here, we use X-ray crystallography to provide a high-resolution view of interactions between the enzyme serine hydroxymethyltransferase (SHMT), which provides one carbon precursors for the folate cycle, and a polyglutamylated form of THF. Our 1.7 Å crystal structure of soybean SHMT8 in complex with diglutamylated 5-formyl-THF reveals, for the first time, a structural rearrangement of a loop at the entrance to the folate binding site accompanied by the formation of novel specific interactions between the enzyme and the diglutamyl tail of the ligand. Biochemical assays show that additional glutamate moieties on the folate ligand increase both enzyme stability and binding affinity. Together these studies provide new information on SHMT structure and function and inform the design of anti-folate agents.

KEYWORDS

enzyme, enzyme structure, polyglutamylation, structural biology, structure-function, X-ray crystallography, crystal structure

Abbreviations: cv, cultivar; DIGLU, diGlu-FTHF; FTHF, 5-formyl-THF; PABA, p-aminobenzoic acid; PDB, Protein Data Bank; PLP, pyridoxal 5-phosphate; SHMT, serine hydroxymethyltransferase; THF, (6S)-tetrahydrofolate.

Introduction

Folates act as donors and acceptors in one-carbon metabolism and play essential metabolic roles in all organisms. In most cells, tetrahydrofolate is modified by a variable number of glutamate residues linked as amides through the γ -carboxyl group, a covalent modification known as polyglutamylation. Polyglutamylation of THF has known roles in cellular homeostasis and regulation of folate metabolism (McGuire and Bertino, 1981; Schirch and Strong, 1989). As polyglutamylated THF (polyGlu-THF) does not cross cellular membranes, this modification serves to maintain distinct pools of folate in different cellular compartments and also blocks export of THF from cells (Figure 1). The number of glutamates linked to folate is variable depending on organism, cell type, and sub-cellular location, ranging from one to more than 15 (Garza-Aguilar et al., 2020), but is often around five to six. Polyglutamylation of folate affects diverse processes, such as maintenance of the mitochondrial genome (Cherest et al., 2000), chromatin silencing (Zhou et al., 2013) and fruit development and ripening (Garza-Aguilar et al., 2020). Folate polyglutamylation has been linked to substrate channeling for some enzymes in the folate cycle (Schirch and Strong, 1989), and is a consideration in the design of anti-folate agents (Ruszkowski et al., 2019; Katinas et al., 2024).

The enzyme serine hydroxymethyltransferase (SHMT) plays a key role in folate-mediated one carbon metabolism, providing precursors for multiple metabolic pathways. SHMT catalyzes the reversible conversion of L-serine and THF into glycine and 5,10-methylene THF. SHMT is highly conserved in evolution, utilizes pyridoxal 5-phosphate (PLP) as a co-factor and can accept polyGlu-THF as a substrate (Matthews et al., 1982; Schirch and Strong, 1989; Strong et al., 1989). Prior studies of SHMT have indicated that polyGlu-THF binds to the enzyme with higher affinity than the monoglutamylated form (Schirch and Ropp, 1967; Matthews et al., 1982; Rebeille et al., 1994; Huang et al., 1998; Wei et al., 2013). However, despite relevance to enzyme function and folate metabolism, structural interactions between SHMT and polyGlu-THF are poorly characterized (Fu et al., 2003). These are of

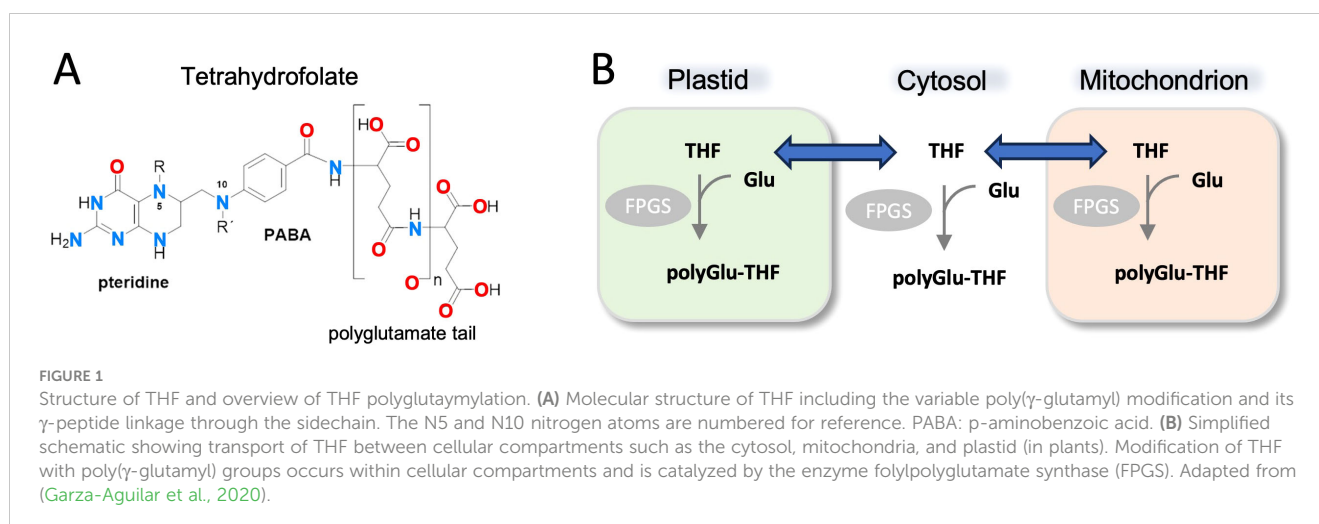
particular importance for inhibitor design, as SHMT is a target for antibacterial, antimalarial, anti-cancer, and herbicide agents (Schwertz et al., 2017, 2018; Batool et al., 2020; Cuthbertson et al., 2021; Zarou et al., 2021; Makino et al., 2022; Jin et al., 2023; Situ et al., 2023; Li et al., 2024).

Here, we have used X-ray crystallography and biochemical studies to gain insight into the interactions of polyGlu-THF with SHMT8, a cytosolic enzyme isoform from *Glycine max* (soybean). We present a 1.7 Å resolution structure of soybean SHMT8 in ternary complex with PLP-glycine (PLP-Gly) and the diglutamylated form of 5-formyl-THF (diGlu-FTHF). Through comparisons with the known complex with (monoglutamylated) FTHF (PDB ID: 6UXJ) (Korasick et al., 2020), we identify interactions specific to the SHMT8 – diGlu-FTHF complex, including a conformational change in a key loop at the entrance of the folate binding site. The novel loop conformer enables multiple interactions with atoms in the two glutamate moieties that are not present in the complex with FTHF. Biochemical studies of enzyme thermal stability and folate binding affinity support observations from the crystal structure. Implications for the design of anti-folate inhibitors for SHMT are discussed.

Material and methods

Protein purification and crystallization

Soybean SHMT8 (cv. Essex) was expressed in *E. coli* and purified as previously described (Korasick et al., 2020). For crystallization experiments, SHMT8 samples were prepared at 10 mg mL⁻¹ in 25 mM HEPES, pH 7.5, 50 mM NaCl, and 0.5 mM Tris (carboxyethyl)phosphine (Hampton Research) and supplemented with 0.25 mM PLP (Sigma Aldrich). To obtain a ternary complex with PLP-Gly and diGlu- or tetraGlu-FTHF (Schircks Laboratories, Bauma, Switzerland), stock solutions of ligands were prepared in the same buffer as the protein. Glycine at 20 mM and diGlu-FTHF or tetraGlu-FTHF at 6 mM or 8 mM final concentration, respectively, were added to the protein. Crystallization screens



were performed at 19°C using the hanging-drop vapor-diffusion method with a 1:1 ratio of the protein-ligand solution to the reservoir solution (total volume 4 μ l). Initial crystals with diGlu-FTHF were obtained from condition 92 of the Index screen (Hampton Research) containing 0.1 M magnesium formate dihydrate and 15% (w/v) PEG 3350. Microseeding was done to increase crystal size, using a 1:3:4 ratio of micro seeds: protein: reservoir solution (total volume 4 μ l). Data collection quality crystals with glycine and diGlu-FTHF were obtained in 0.1 M magnesium formate dihydrate and 13 - 17% (w/v) PEG 3350 within 48 hours. Data collection quality crystals were not obtained with tetraGlu-FTHF. Crystals were cryoprotected through the addition of 100% (v/v) ethylene glycol to the crystallization drop to a final concentration of 30% (v/v) ethylene glycol and flash-cooled in liquid nitrogen.

X-ray diffraction data collection, phasing, and refinement

X-ray diffraction data were collected at the Advanced Light Source at beamline 4.2.2 using a Pilatus 3 6M detector in shutterless mode. The data set consists of 720 images spanning 180°. The data were integrated and scaled with XDS (Kabsch, 2010), and intensities merged and converted to amplitudes with Aimless (Evans and Murshudov, 2013). Initial phases for the diGlu-FTHF complex with SHMT8 were determined through Fourier synthesis and refinement was begun using the structure of SHMT8 bound to FTHF (PDB ID: 6UXJ; 100% sequence identity) (Korasick et al., 2020) as the template, after removal of ligands and water molecules. The model was improved using the PHENIX software package (Adams et al., 2010) via iterative rounds of refinement with phenix.refine (Afonine et al., 2012) and manual building in COOT (Emsley and Cowtan, 2004). The structures were validated using MolProbity (Chen et al., 2010) and the wwPDB validation service (Gore et al., 2017). Modeling of ligands was validated with polder omit maps (Liebschner et al., 2017). Data collection and refinement statistics may be found in Table 1.

Folate binding assay

The binding affinity of polyGlu-FTHF compounds to SHMT8 was determined as previously reported (Korasick et al., 2020). Briefly, single enzyme solutions at 20 μ M were prepared with diGlu-, tetraGlu-, or hexaGlu-FTHF (Schircks Laboratories) at concentrations ranging from 10 - 80 μ M. (Assays with Forrest SHMT8 were only done with tetraGlu-FTHF). The glycine concentration was held constant at 5 mM. Protein and ligand solutions were mixed in a ratio of 1:1 in a 96-well plate. The plate was analyzed by an absorbance scan from 450-550 nm in a BioTek Epoch II plate reader following the formation of a peak at 500 nm, consistent with the formation of the quinonoid intermediate and representative of the total ternary complex in the enzyme solution (Strong et al., 1989; Cai et al., 1995). The absorbance at 500 nm was

TABLE 1 X-ray diffraction data collection and refinement statistics.

Space group	$P2_1$
Unit cell parameters (\AA , °)	a = 86.208, b = 89.02, c = 146.19 β = 90.536
Wavelength (\AA)	1.07216
Resolution (\AA)	43.1 - 1.69 (1.75 - 1.69)
Total reflections	822007 (27295)
Unique reflections	238721 (10106)
Multiplicity	3.4 (2.7)
Completeness (%)	96.72 (87.07)
Mean I/σ	8.6 (0.6)
Wilson B-factor (\AA^2)	23.49
$R_{\text{merge}}(I)$	0.066 (1.057)
$R_{\text{meas}}(I)$	0.091 (1.442)
$R_{\text{pin}}(I)$	0.048 (0.873)
$CC_{1/2}$	0.997 (0.314)
R_{cryst}	0.1881 (0.2976)
R_{free}^*	0.2160 (0.3231)
Number of non-hydrogen atoms	16518
macromolecules	14564
ligands	476
solvent	1478
Protein residues	1888
rmsd bonds (\AA)	0.007
rmsd angles (°)	0.97
Ramachandran favored (%)	97.45
Ramachandran allowed (%)	2.55
Ramachandran outliers (%)	0.00
Clashscore	4.35
Average B-factor (\AA^2)	29.40
macromolecules	28.54
ligands	29.78
solvent	37.74
PDB code	8TQF

Statistics for the highest-resolution shell are shown in parentheses. *5% test set used for R_{free} calculations.

baseline subtracted from the absorbance at 540 nm. Data were analyzed using Origin 2023 by plotting absorbance versus polyGlu-FTHF concentration. Data for FTHF binding were fit to the Michaelis-Menten equation, using $K_d = K_m$. Due to apparent non-Michaelis-Menten behavior, data for binding of the diGlu-, tetraGlu-, and hexaGlu-FTHF were fit to the substrate inhibition equation in Origin 2023. Errors represent the uncertainties of the parameters generated by the fitting program for the respective equations.

Thermal shift assays

SHMT8 samples were diluted to 1.0 mg/mL (20 μ M) in 50 mM HEPES, pH 7.4, 0.5 mM TCEP, and 50 mM NaCl in the presence and absence of various ligands. A total of six protein samples were prepared: protein in the absence of ligands; protein with glycine; and protein with glycine and FTHF, diGlu-, tetraGlu-, or hexaGlu-FTHF. The final concentrations for protein, glycine, and various forms of FTHF were 10 μ M, 12.5 μ M, and 1.25 μ M, respectively. The samples were incubated with SYPRO Orange dye from the Applied Biosystems Protein Thermal Shift kit per the manufacturer's recommendation for 1 hour at 4°C. A Quant Studio 3 Real-Time PCR System was employed to raise the temperature from 20°C to 99°C in intervals of 0.1°C, with a 10-second hold between each step. Experiments were conducted in triplicate, averaged, and fluorescence values normalized as described by (Andreotti et al., 2015). Curves were plotted using Origin 2023. $T_{0.5}$ was determined as the midpoint of the normalized fluorescence response by fitting to the Boltzmann equation; errors reported are standard error of mean (SEM), where $SEM = s/\sqrt{n}$, s is standard deviation and n is number of observations.

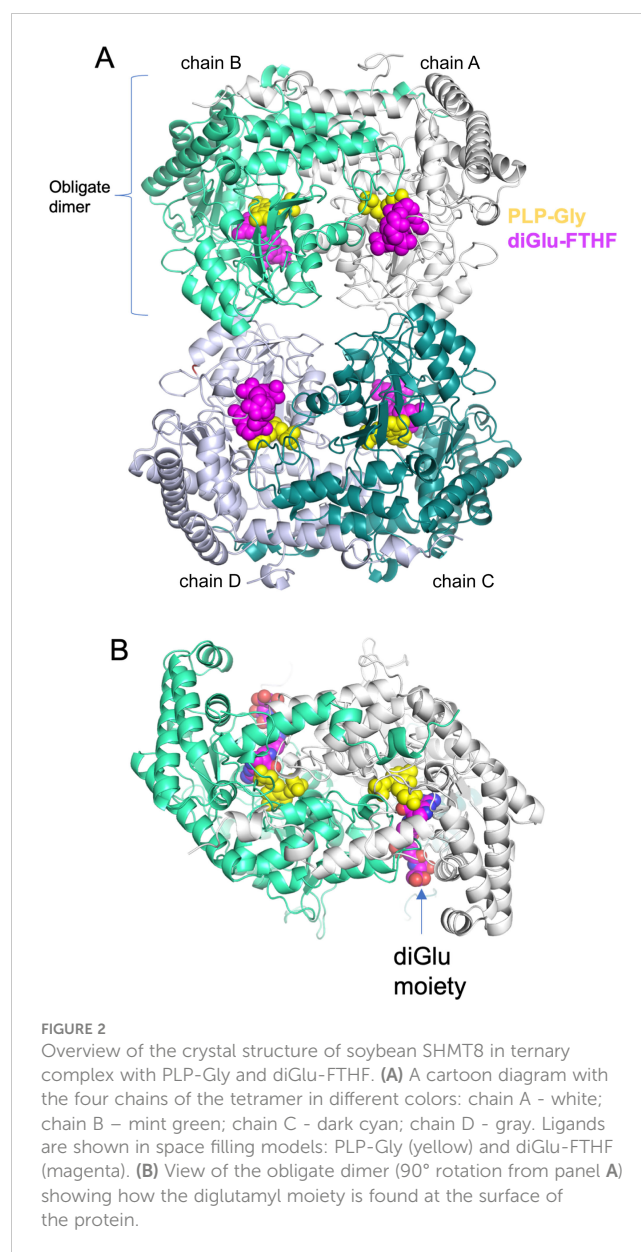
Software used

Molecular figures were prepared using PyMol (DeLano, 2002). Surface electrostatic potential was calculated at pH 7.0 using the PDB2PQR and APBS servers at: <https://server.poissonboltzmann.org/> using default parameters (Jurrus et al., 2018) and displayed using PyMol (DeLano, 2002). Animation was created using the morph tool of ChimeraX (Meng et al., 2023).

Results

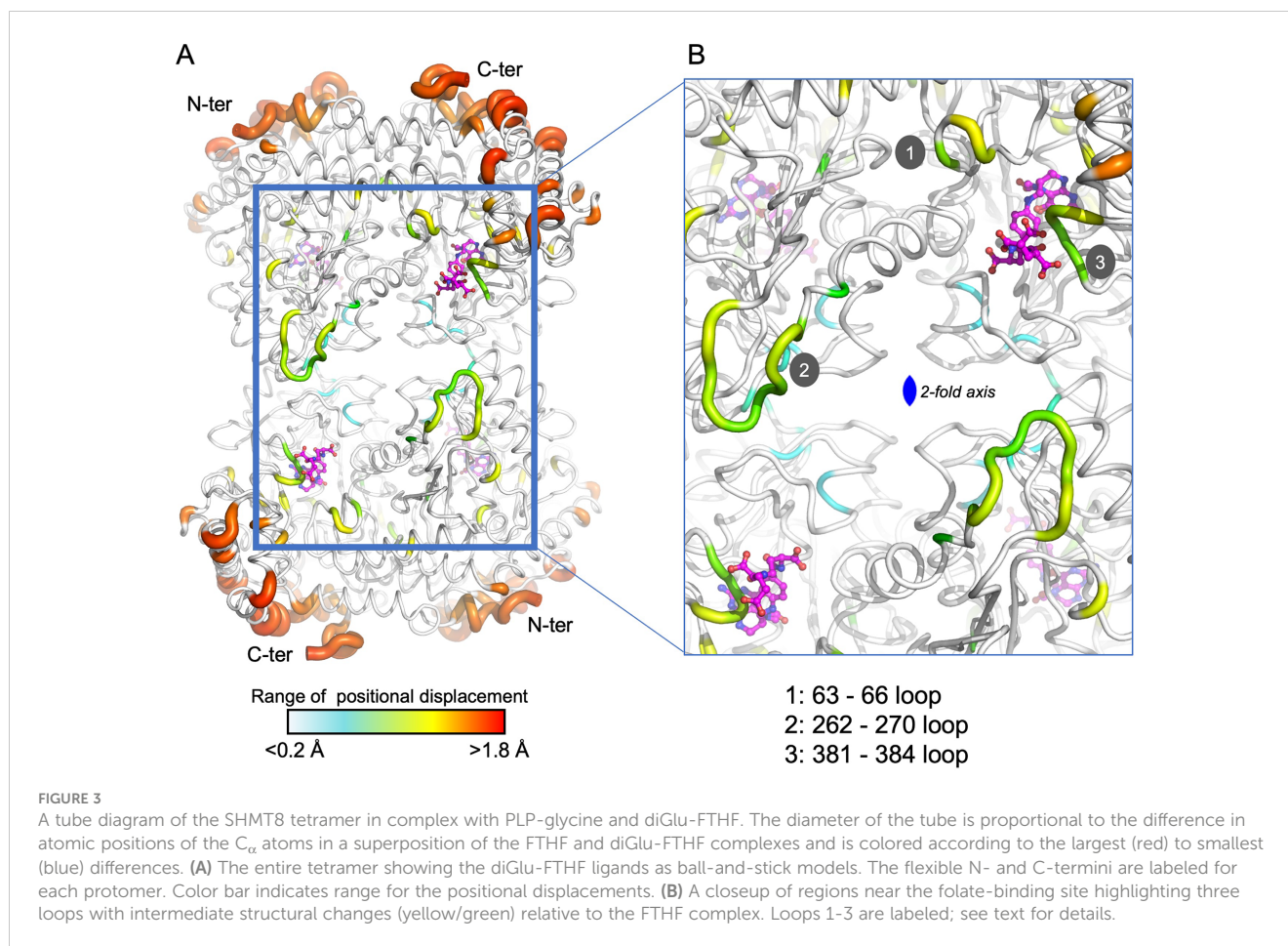
Overview of SHMT8 structure and its THF-binding site

Previous structural studies of soybean SHMT8 have provided detailed snapshots of the enzyme, representative of different stages of its multi-step reaction: the resting state of the enzyme with PLP; the enzyme bound to the PLP-Gly intermediate; and a ternary complex of the enzyme with PLP-Gly and the substrate analog FTHF (Korasick et al., 2020). These structures showed that, similar to SHMT from other eukaryotes, soybean SHMT8 adopts a tetrameric assembly, verified in solution by small-angle X-ray scattering and analytical ultracentrifugation (Korasick et al., 2020). The tetramer is composed of two obligate dimers (Figure 2). The two protomers within an obligate dimer are tightly intertwined, and residues from both polypeptide chains contribute to each active site (Figure 2B). In the ternary complex, PLP-Gly is in a deeply buried pocket at the interface of the two polypeptide chains. The FTHF substrate analog binds with its pteridine ring adjacent to PLP, as necessary for catalysis, while the para-amino benzoic acid (PABA) lies in a hydrophobic channel. The glutamate moiety of FTHF is positioned at the entrance of the THF



binding site and is largely exposed to solvent. For a more detailed discussion of the SHMT8 catalytic site, see (Korasick et al., 2020).

In this study, we have determined the crystal structure of soybean SHMT8 in complex with diGlu-FTHF and PLP-Gly at 1.7 Å resolution (Table 1). The diGlu-FTHF complex (PDB ID: 8TQF) crystallizes isomorphously with the previously determined FTHF ternary complex (PDB ID: 6UXJ) in space group $P2_1$ with a single tetramer in the asymmetric unit. Both the PLP-Gly and diGlu-FTHF ligands are bound in all four active sites of the tetramer with overall occupancies of 1.0, and have similar binding poses to the ternary complex with FTHF. A superposition of the polypeptide chains in FTHF and diGlu-FTHF complexes yields a C_{α} root mean square deviation (rmsd) of 0.48 Å over 1892 residues, highlighting their overall structural similarity. However, several minor conformational changes occur relative to the FTHF structure (Figure 3). Aside from residues in the flexible N- and C-termini of the protomers (red/orange in Figure 3A), these changes are



generally clustered in/around the entrance of the folate binding site (see loops 1, 3 in green/yellow in Figure 3B). A small shift is also seen in the nearby extended loop comprising residues 262-270 (loop 2). These changes are similar in all four polypeptide chains of the tetramer, maintaining the symmetry observed in the ternary complex with FTHF (Korasick et al., 2020).

Conformational change of the THF-binding loop and Leu383

Of the three loops noted above, one is of particular interest in SHMT8 function: loop 3, which spans residues 381-384 and has also been called the THF-binding loop (residues 377-385) (Korasick et al., 2020). This loop was previously noted for conformational flexibility/changes in SHMT8. In particular, it adopts an ordered, closed conformation in the SHMT8 ternary complex with PLP-Gly and FTHF, when compared to structures without bound FTHF where it is largely disordered (Korasick et al., 2020, 2024). Moreover, two amino acid polymorphisms of SHMT8 that flank the THF-binding site and reduce its flexibility were shown to interfere with folate binding (Korasick et al., 2020), demonstrating its functional importance.

In the SHMT8 complex with diGlu-FTHF, we identify an additional conformational change of the THF-binding loop

specifically associated with the presence of second glutamate moiety (Glu_2) of the ligand. As shown in Figure 4, the loop closes in more tightly against the bound diGlu-FTHF. This is apparent from changes in the position of the backbone of 1-2 Å (Figure 4A) as well as in the sidechain of Leu383, a residue in the middle of the loop, which undergoes a significant rotation with a resulting change of ~5 Å in the position of the terminal carbon atoms. In the diGlu-FTHF complex (Figure 4B), the Leu383 sidechain (chain A) packs against the ring of Tyr68 (chain B), making a potential CH - π hydrogen bond (Supplementary Figure 1) (Brandl et al., 2001). Another hydrogen bond is found between the sidechain of Ser381 and a backbone oxygen of Glu_2 . In addition, two hydrogen bonds are formed between the backbone amides of residues 382 and 383 and the γ -carbonyl of the first glutamate moiety (Glu_1). A water-mediated contact is found between a carboxyl oxygen of Glu_1 and the sidechain hydroxyl group of Tyr68.

A detailed comparison of enzyme-ligands contacts in the SHMT8 ternary complexes with FTHF (PDB ID: 6UXJ) and diGlu-FTHF (PDB ID: 8TQF) (Table 2) shows that contacts to the pteridine ring of the THF are very similar, while differences emerge in the contacts to the PABA and Glu_1 moieties. For example, a direct contact between the N atom of PABA and Tyr68 in the FTHF complex is replaced by a water-mediated contact between Tyr68 and an oxygen of Glu_1 in the diGlu-FTHF complex. Other changes are apparent (Table 2; Supplementary

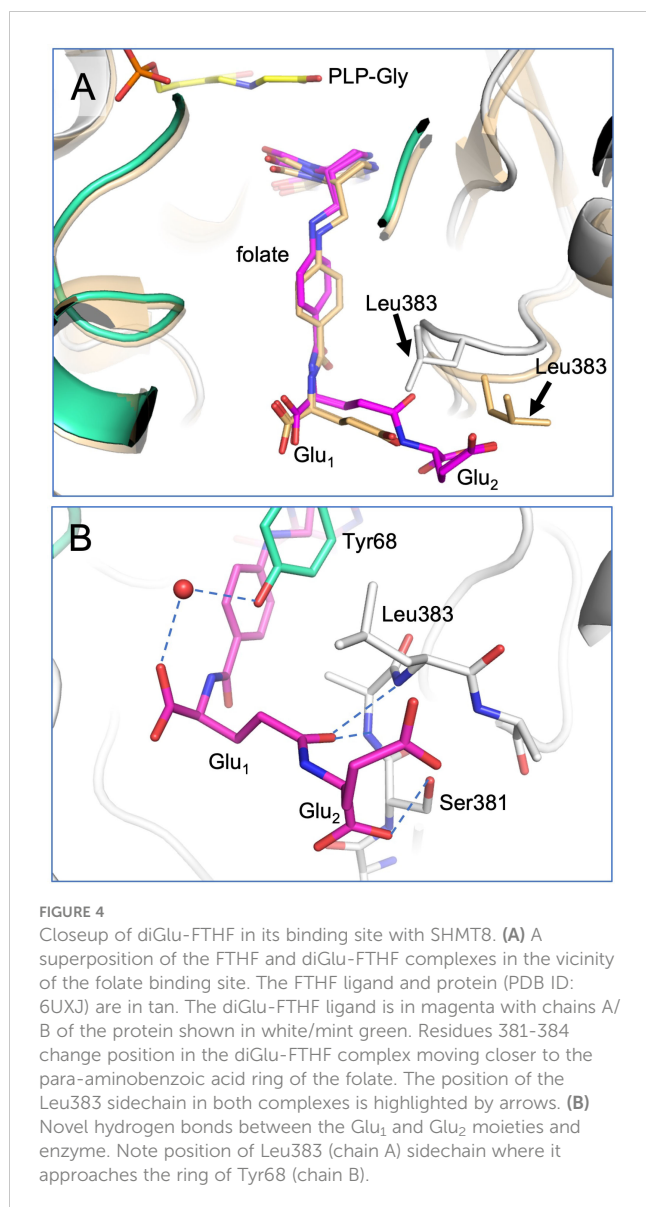


Figure 2), with the majority being new contacts between the enzyme and diGlu-FTHF, as described above. We note that while Glu₁ is present in the SHMT8 complex with FTHF, the corresponding contacts are not found, showing that the presence of Glu₂ is responsible for the novel contacts (e.g., to OEB and O12 atom on Table 2).

Polyglutamylation of THF increases enzyme stability and folate binding affinity

To provide further insight into SHMT interactions with polyGlu-THF, we investigated the potential effect of various ligands on the thermal stability of SHMT8. In addition to Gly and FTHF, three polyGlu derivatives of FTHF were tested: di-, tetra-, and hexaGlu-FTHF. $T_{0.5}$ values were determined using a thermal shift assay (TSA) (Table 3, Figure 5A). SHMT8 and SHMT8 + Gly showed similar $T_{0.5}$. In contrast, addition of FTHF ligands produces significant increases

in thermal stability, with changes in $T_{0.5}$ ranging from 9.2 to 18.3°C. The greatest increase in enzyme stability was found for binding of hexaGlu-FTHF, while the smallest was for FTHF. This trend is consistent with previous studies of mammalian SHMT enzymes with various polyGlu-FTHF ligands that show a trend of increased binding affinity with increasing length of the polyglutamate modification (Matthews et al., 1982; Strong and Schirch, 1989; Huang et al., 1998; Fu et al., 2003).

Binding affinities for soybean SHMT8 were also determined for di-, tetra-, and hexaGlu-FTHF using a classical spectroscopic assay. This assay monitors the formation of an absorbance peak at 500 nm resulting from formation of a quinonoid species of PLP that accumulates in the presence of bound FTHF (Florini and Vestling, 1957). Data were collected at a single concentration of glycine and dissociation constants (K_d) determined for the various FTHF compounds (Table 3, Figure 5B). Data for FTHF binding were fit to the Michaelis-Menten equation. Due to apparent non-Michaelis-Menten behavior (Figure 5B) of unknown origin, curves for the polyGlu-FTHF species were fit to the substrate inhibition equation. These data show an approximately 3-fold increase in binding affinity to SHMT8 for tetra- and hexaGlu-FTHF over FTHF. In this assay, the K_d for FTHF and diGlu-FTHF is similar, but due to the different models for fitting, these values may not be directly comparable. Note that the slopes on Figure 5B suggest higher affinity binding of diGlu-FTHF than FTHF.

We also conducted binding studies with a double amino variant of soybean SHMT8 found in the soybean cultivar known as Forrest (Liu et al., 2017). These two amino acid polymorphisms (P130R/N358Y) in Forrest SHMT8 are associated with resistance to the soybean cyst nematode (Liu et al., 2012) and previous work has shown that Forrest SHMT8 is highly impaired in binding folate (Korasick et al., 2020). To investigate whether the higher binding affinity of polyGlu-THF might overcome the THF-binding defect of Forrest SHMT8, we assessed FTHF binding using the spectroscopic assay described above. However, no absorbance at 500 nm could be measured (Figure 5B, purple line), showing that the defect in THF-binding of Forrest SHMT8 extends to the natural, polyglutamylated form of the substrate found in plant cells.

Discussion

Polyglutamylation of THF is key to its retention in cells and its localization to various sub-cellular compartments (Green and Matthews, 2007; Mehrshahi et al., 2010). In addition to this essential biological role, polyglutamylation of THF affects interactions with enzymes in the folate cycle. The association of polyGlu-THF with various folate-dependent enzymes has been proposed to increase the stability of the cellular folate pool, since bound folate is less susceptible to oxidative degradation (Orsomando et al., 2005; Mehrshahi et al., 2010). Previous studies suggest that polyglutamylation of THF also affects the kinetic properties of various enzymes in folate metabolism and may control the flux of one-carbon units towards different metabolic pathways (Schirch and Strong, 1989). This modification is therefore an important regulator of THF metabolism and homeostasis in plants and other organisms.

TABLE 2 SHMT8 hydrogen bond contacts in the ternary complexes with FTHF and diGlu-FTHF.

Ligand atom	Protein residue & atom	Protein Chain	FTHF/A* (Å)	FTHF/B* (Å)	DIGLU/A* (Å)	DIGLU/B* (Å)
Pteridine ring contacts						
N1	N374 ND2	A	3.11	3.11	3.23	3.17
NA2	L129 O	A	2.97	2.90	2.89	2.90
	G133 O	A	3.09	3.04	2.97	3.16
N3	G133 O	A	2.53	2.68	2.77	2.65
O4	L135 N	A	2.90	3.11	2.97	2.81
O5B	E61 OE1	B	2.87	–	2.62	–
	E61 OE2	B	2.56	–	2.85	–
	Y69 OH	B	3.28	–	3.28	–
	H134 NE2	A	2.90	–	2.86	–
N8	N374 OD1	A	2.81	2.83	2.66	2.76
PABA/glutamate contacts						
O	Y139 OH	A	2.56	2.71	2.92	2.94
N/NG1	Y68 OH	B	2.69	2.73	–	–
O11	Water		–	–	2.69	2.69
	(Y68 OH)					
O2/O21	K145 NZ	A	–	–	2.98	2.89
	Water (K145 NZ)		2.62	2.63	–	–
OEB	A382 N	A	–	–	2.90	2.95
	L383 N	A	–	–	2.89	2.86
O12	S381	A	–	–	2.76	2.82

Hydrogen bonds determined by Contact (CCP4) (Winn et al., 2011) for the ligand bound primarily to chain A of PDB IDs: 6UXJ and 8TQF. Additional contacts made by residues in chain B of the obligate dimer are also listed. DIGLU, diGlu-FTHF. *Both ligands were modeled as two conformers (A and B) of approximately equal occupancy due to evidence for two positions of the O5 formyl group that required small shifts in multiple atoms of the pteridine ring. Ligand atom names separated by slash (/) indicates alternate designation for same atom in the two different ligands. Dash indicates missing contact. Water-mediated contacts to atoms in the PABA/glutamate moieties that are conserved in all four active sites are included in the list (participating protein residue in parentheses below). See Supplementary Figure 2 for schematics with ligand atom names.

TABLE 3 Melting temperatures ($T_{0.5}$) and dissociation constants for binding of various forms of polyGlu-FTHF to soybean SHMT8.

	FTHF species	$T_{0.5}$ (°C)	$\Delta T_{0.5}$	K_d (μ M)
SHMT8	–	56.1 \pm 0.1	–	–
SHMT8 + Gly	–	55.2 \pm 0.1	-0.9	–
SHMT8 + Gly	FTHF	65.3 \pm 0.0	9.2	21 \pm 2*
SHMT8 + Gly	diGlu-FTHF	71.6 \pm 0.1	15.5	20 \pm 3
SHMT8 + Gly	tetraGlu-FTHF	72.0 \pm 0.1	15.9	7 \pm 1
SHMT8 + Gly	hexaGlu-FTHF	74.4 \pm 0.1	18.3	8 \pm 2

* K_d for FTHF was determined by fitting to the Michaelis-Menten equation. Due to apparent non-Michaelis-Menten behavior, dissociation constants for the polyGlu-FTHF species were fit to the substrate inhibition equation.

Our previously characterized SHMT8 structures enable detailed comparisons with the diGlu-FTHF complex determined in this study, allowing elucidation of changes associated specifically with the polyglutamate modification. These include the formation of specific enzyme contacts to the diglutamyl tail of FTHF, as well as identification of a novel conformer of the functionally critical THF-binding loop. This conformer, including the large rearrangement of the Leu383 side chain, has not been observed in other crystal structures of SHMT8 or in other SHMT ligand complexes with FTHF. The unique conformer of the THF-binding loop associated with binding of the diglutamylated ligand further highlights the importance of this flexible loop in SHMT function. The novel interactions between diGlu-FTHF and SHMT8 are interesting to consider in the context of the large SHMT enzyme superfamily. Most residues in the active site of SHMT, including those surrounding the PLP and pteridine ring of the folate, are highly conserved (Supplementary Figure 3) (Scarsdale et al., 2000; Korasick et al., 2020). On the other hand, residues in the THF-binding loop that interact with the diglutamyl tail of FTHF

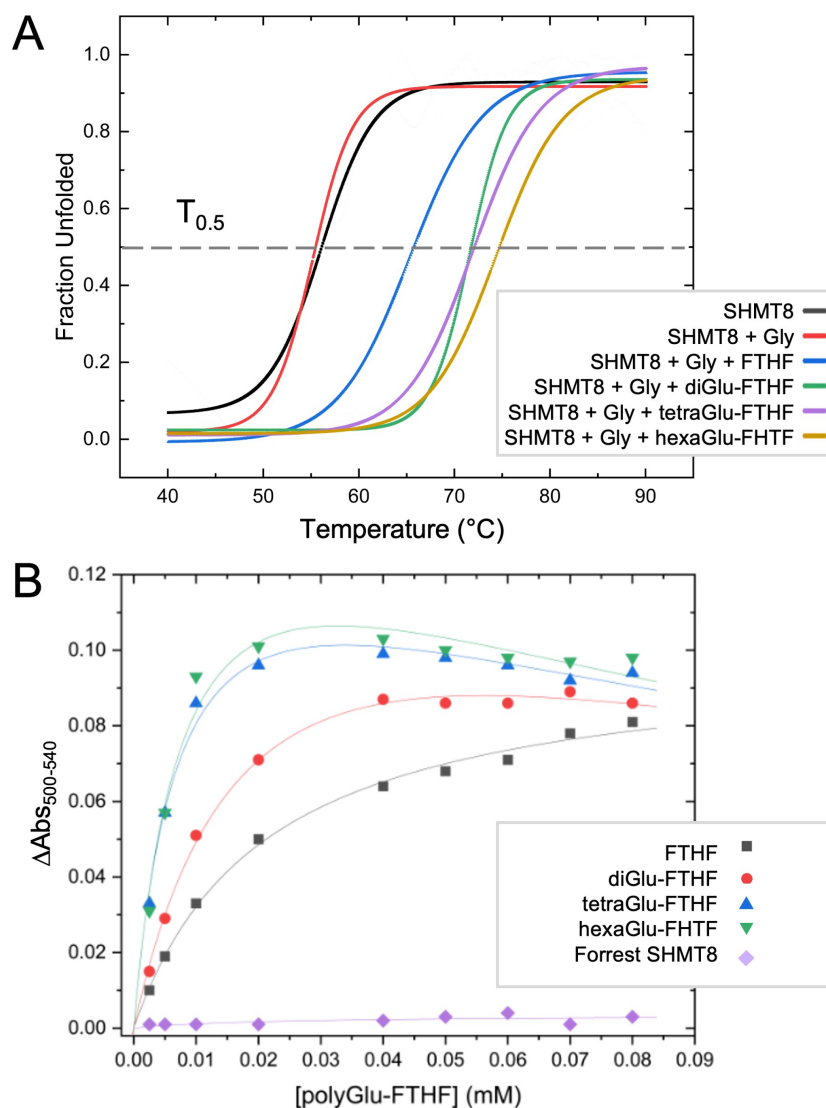


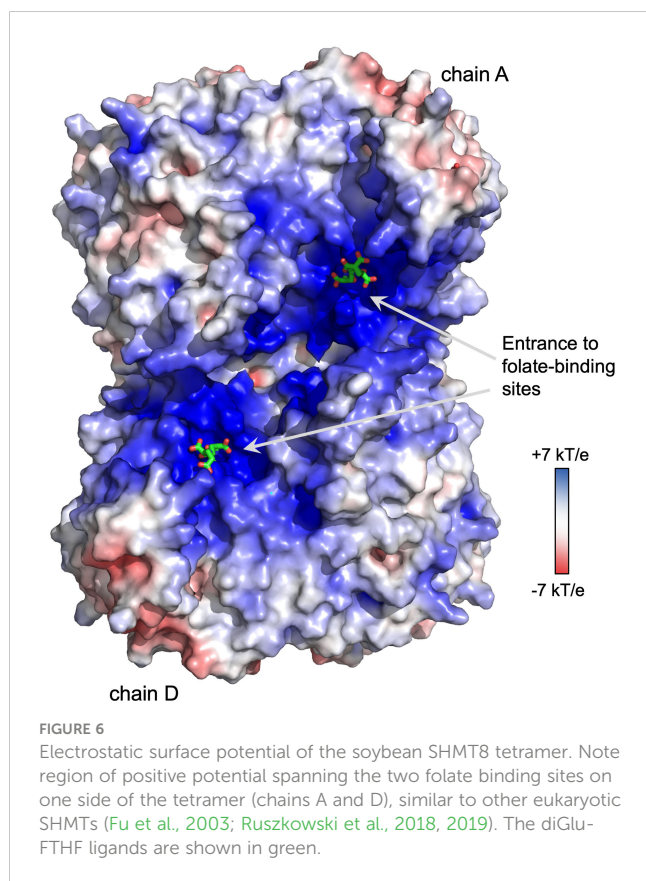
FIGURE 5

Thermal shift and folate binding data for soybean SHMT with polyglutamylated THF. (A) Heat induced melting profiles of SHMT8 in the presence of various ligands. Curves displayed are calculated from the average of three measurements. See panel for key. $T_{0.5}$ (gray line) corresponds to 50% unfolded protein. (B) Change in absorbance monitoring binding of various polyGlu-FTHF species. All assays done with SHMT8 from cv. Essex except for the purple line, which was Forrest SHMT8 as noted on key.

identified here have generally low to moderate conservation. This is perhaps not surprising as most of the contacts to the glutamates are made by backbone atoms of the protein and are therefore not sequence specific. We note, however, that Tyr68 – the residue involved in contacts with the Leu383 sidechain – is the first residue in a highly conserved YYGG sequence motif in the SHMT family (Supplementary Figure 3). The importance of this tyrosine in the activity of human SHMT2 (corresponding residue Tyr105) has been shown through mutagenesis (Katinas et al., 2024).

Prior to this study, the structural details of interactions between polyglutamylated THF and SHMT were largely uncharacterized. The 2.7 Å crystal structure of rabbit SHMT bound to triGlu-FTHF has been reported (Fu et al., 2003), however, electron density for the triglutamyl tail of the ligand is weak (Supplementary Figure 4), and there are other indicators of questionable quality in this structure.

Thus, it is difficult to draw firm conclusions about interactions with triGlu-FTHF in this complex. In more recent work examining antifolate inhibitors of human SHMT2, crystal structures of two polyGlu derivatives were determined at resolutions of 2.80 and 2.72 Å (Katinas et al., 2024). These structures lack enzyme contacts to this region, but as the inhibitor scaffold differs from folate, their binding mode may not fully reflect that of polyGlu-THF. Neither study found a conformational change of the THF-binding loop as seen in the SHMT8 complex with diGlu-FTHF. In addition, we note that only half the active sites in the other complexes contain bound ligand (Fu et al., 2003; Katinas et al., 2024), compared with the four fully occupied active sites of the SHMT8 complex bound to diGlu-FTHF. Additional work will be needed to determine whether there are genuine differences between the soybean and mammalian SHMT complexes.



The biochemical data presented here complements knowledge gained from various crystal structures of soybean SHMT8. Melting temperatures from TSA show that the stability of the SHMT8-ligand complexes increases substantially in the presence of FTHF relative to ligand-free or PLP-Gly bound enzyme. This is consistent with a variety of small structural changes, including ordering of the THF-binding loop, that occur upon FTHF binding, as noted in the previously determined SHMT8 ternary complex (Korasick et al., 2020). Binding of diGlu-FTHF results in additional stabilization, presumably reflecting the further closure of the THF-binding loop and additional enzyme-ligand contacts. Longer polyGlu tails of the ligand indicate only minor stabilization by TSA but do show increased binding affinity in the FTHF binding assay. Although not visualized in our crystal structure with diGlu-FTHF, the ligand is positioned such that an extended polyGlu tail would be near a region of positive electrostatic charge that runs across the surface of the tetramer, roughly spanning the entrances of the THF-binding sites in chains A and D (Figure 6). This feature is highly conserved in the enzyme superfamily and has been previously suggested to interact with polyGlu-THF (Fu et al., 2003; Ruskowski et al., 2018, 2019). A better understanding of the interactions between SHMT and polyglutamylated THF is highly relevant for inhibitor design. In general, SHMT is a target for antimicrobial (Batool et al., 2020; Jin et al., 2023), antimalarial (Witschel et al., 2015; Schwertz et al., 2017, 2018; Maenpuen et al., 2023) and herbicide agents (Witschel et al., 2015; Li et al., 2024). Human SHMT has also been recognized as a promising target for development of new chemotherapeutics due to the high demand for one-carbon units in cancer cells (Cuthbertson

et al., 2021; Zarou et al., 2021; Makino et al., 2022; Situ et al., 2023). Our studies suggest that compounds whose binding permits the conformational change of the THF-binding loop observed in the SHMT8 complex might enable higher affinity binding. Given appropriate closure/rearrangement of the loop, inhibitors modified by polyglutamylation could potentially take advantage of the additional enzyme-ligand interactions as well as the positive electrostatic surface patch of the enzyme. Identifying ligand scaffolds compatible with the loop closure would be a new consideration in the design of tight-binding inhibitors to SHMT. The high-resolution soybean SHMT8 complex with diGlu-FTHF provides a high-quality structural template for future molecular modelling and inhibitor design efforts.

Data availability statement

The datasets presented in this study can be found in online repositories. The names of the repository/repositories and accession number(s) can be found below: <https://doi.org/10.2210/pdb8TQF/pdb>.

Author contributions

LO: Conceptualization, Formal analysis, Investigation, Methodology, Validation, Writing – review & editing. MM: Funding acquisition, Project administration, Resources, Writing – review & editing. LB: Conceptualization, Formal analysis, Funding acquisition, Investigation, Methodology, Project administration, Resources, Supervision, Validation, Visualization, Writing – original draft, Writing – review & editing.

Funding

The author(s) declare financial support was received for the research, authorship, and/or publication of this article. This work was supported by a joint NSF/USDA award IOS 2152548/NIFA 2021-67013-35887 to LB and MM. LO was the recipient of a Wayne L. Ryan fellowship from the University of Missouri Department of Biochemistry.

Acknowledgments

We thank Jack Tanner for helpful discussions and Jay Nix of the Advanced Light Source Beamline 4.2.2 for assistance with X-ray data collection. This research used resources of the Advanced Light Source, which is a Department of Energy Office of Science User Facility under contract no. DE-AC02-05CH11231. Molecular graphics and analyses performed with UCSF ChimeraX, developed by the Resource for Biocomputing, Visualization, and Informatics at the University of California, San Francisco, with support from National Institutes of Health R01-GM129325 and the Office of Cyber Infrastructure and Computational Biology, National Institute of Allergy and Infectious Disease.

Conflict of interest

The authors declare that the research was conducted in the absence of any commercial or financial relationships that could be construed as a potential conflict of interest.

Publisher's note

All claims expressed in this article are solely those of the authors and do not necessarily represent those of their affiliated

organizations, or those of the publisher, the editors and the reviewers. Any product that may be evaluated in this article, or claim that may be made by its manufacturer, is not guaranteed or endorsed by the publisher.

Supplementary material

The Supplementary Material for this article can be found online at: <https://www.frontiersin.org/articles/10.3389/fpls.2024.1451839/full#supplementary-material>

References

- Adams, P. D., Afonine, P. V., Bunkóczi, G., Chen, V. B., Davis, I. W., Echols, N., et al. (2010). PHENIX: A comprehensive Python-based system for macromolecular structure solution. *Acta Crystallographica Section D: Biol. Crystallogr.* 66, 213–221. doi: 10.1107/S0907444909052925
- Afonine, P. V., Grosse-Kunstleve, R. W., Echols, N., Headd, J. J., Moriarty, N. W., Mustyakimov, M., et al. (2012). Towards automated crystallographic structure refinement with *phenix.refine*. *Acta Crystallogr. D Biol. Crystallogr.* 68, 352–367. doi: 10.1107/S0907444912001308
- Andreotti, G., Monticelli, M., and Cubellis, M. V. (2015). Looking for protein stabilizing drugs with thermal shift assay. *Drug testing Anal.* 7, 831–834. doi: 10.1002/dta.1798
- Batool, N., Ko, K. S., Chaurasia, A. K., and Kim, K. K. (2020). Functional identification of serine hydroxymethyltransferase as a key gene involved in lysostaphin resistance and virulence potential of staphylococcus aureus strains. *Int. J. Mol. Sci.* 21, 1–20. doi: 10.3390/ijms21239135
- Brandl, M., Weiss, M. S., Jabs, A., Sühnel, J., and Hilgenfeld, R. (2001). C-H... π -interactions in proteins. *J. Mol. Biol.* 307, 357–377. doi: 10.1006/jmbi.2000.4473
- Cai, K., Schirch, D., and Schirch, V. (1995). The affinity of pyridoxal 5'-phosphate for folding intermediates of Escherichia coli serine hydroxymethyltransferase. *J. Biol. Chem.* 270, 19294–19299. doi: 10.1074/jbc.270.33.19294
- Chen, V. B., Arendall, W. B., Headd, J. J., Keedy, D. A., Immormino, R. M., Kapral, G. J., et al. (2010). MolProbity: all-atom structure validation for macromolecular crystallography. *Acta Crystallographica Section D Biol. Crystallogr.* 66, 12–21. doi: 10.1107/S0907444909042073
- Cherest, H., Thomas, D., and Surdin-Kerjan, Y. (2000). Polyglutamylated folate coenzymes is necessary for methionine biosynthesis and maintenance of intact mitochondrial genome in *Saccharomyces cerevisiae*. *J. Biol. Chem.* 275, 14056–14063. doi: 10.1074/jbc.275.19.14056
- Cuthbertson, C. R., Arabzade, Z., Bankhead, A., Kyani, A., and Neamati, N. (2021). A review of small-molecule inhibitors of one-carbon enzymes: SHMT2 and MTHFD2 in the spotlight. *ACS Pharmacol. Trans. Sci.* 4, 624–646. doi: 10.1021/acspstsci.0c00223
- DeLano, W. L. (2002). *The PyMOL Molecular Graphics System, Version 3.0*. Schrödinger, LLC. Schrödinger LLC www.pymol.org Version 1. <http://www.pymol.org>. doi: 10.1002/citellike-article-id:240061
- Emsley, P., and Cowtan, K. (2004). Coot: Model-building tools for molecular graphics. *Acta Crystallographica Section D: Biol. Crystallogr.* 60, 2126–2132. doi: 10.1107/S0907444904019158
- Evans, P. R., and Murshudov, G. N. (2013). How good are my data and what is the resolution? *Acta Crystallographica Section D Biol. Crystallogr.* 69, 1204–1214. doi: 10.1107/S0907444913000061
- Florini, J. R., and Vestling, C. S. (1957). Graphical determination of the dissociation constants for two-substrate enzyme systems. *BBA - Biochim. Biophys. Acta* 25, 575–578. doi: 10.1016/0006-3002(57)90529-2
- Fu, T., Scarsdale, J. N., Kazanina, G., Schirch, V., Wright, H. T., and Shmt, S. (2003). Location of the pteroylpolylglutamate-binding site on rabbit cytosolic serine hydroxymethyltransferase. *J. Biol. Chem.* 278, 2645–2653. doi: 10.1074/jbc.M210649200
- Garza-Aguilar, S. M., García-Salinas, C., Mejía-Ponce, P. M., Licona-Cassani, C., Ramos-Parra, P. A., and Díaz de la Garza, R. I. (2020). The complexity of folate polyglutamylated profiles in plants: Postharvest ripening and ethylene modulate polyglutamylated profiles in climacteric fruits plus systematic analysis of the glutamyl tail-editing enzymes. *Scientia Hort.* 273, 109588. doi: 10.1016/j.scienta.2020.109588
- Gore, S., Sanz García, E., Hendrickx, P. M. S., Gutmanas, A., Westbrook, J. D., Yang, H., et al. (2017). Validation of structures in the protein data bank. *Structure* 25, 1916–1927. doi: 10.1016/j.str.2017.10.009
- Green, J. M., and Matthews, R. G. (2007). Folate biosynthesis, reduction, and polyglutamylated and the interconversion of folate derivatives. *EcoSal Plus* 2. doi: 10.1128/ecosalplus.3.6.3.6
- Huang, T., Wang, C., Maras, B., Barra, D., and Schirch, V. (1998). Thermodynamic analysis of the binding of the polyglutamate chain of 5-formyltetrahydropteroylpolylglutamates to serine hydroxymethyltransferase. *Biochemistry* 37, 13536–13542. doi: 10.1021/bi980827u
- Jin, Q., Xie, X., Zhai, Y., and Zhang, H. (2023). Mechanisms of folate metabolism-related substances affecting Staphylococcus aureus infection. *Int. J. Med. Microbiol.* 313, 151577. doi: 10.1016/j.ijmm.2023.151577
- Jurrus, E., Engel, D., Star, K., Monson, K., Brandi, J., Felberg, L. E., et al. (2018). Improvement to the APBS biomolecular solvation software suite. *Protein Sci.* 27, 112–128. doi: 10.1002/pro.3280
- Kabsch, W. (2010). Software XDS for image rotation, recognition and crystal symmetry assignment. *Acta Crystallogr. Sect. D: Biol. Crystallogr.* 66, 125–132. doi: 10.1107/S0907444909047337
- Katinas, J. M., Nayeem, M., Schneider, M., Shah, K., Fifer, A. N., Klapper, L. M., et al. (2024). Structural characterization of 5-substituted pyrrolo[3,2-d]pyrimidine antifolate inhibitors in complex with human serine hydroxymethyl transferase 2. *Biochemistry* 63, 545–562. doi: 10.1021/acs.biochem.3c00613
- Korasick, D. A., Kandoth, P. K., Tanner, J. J., Mitchum, M. G., and Beamer, L. J. (2020). Impaired folate binding of serine hydroxymethyltransferase 8 from soybean underlies resistance to the soybean cyst nematode. *J. Biol. Chem.* 295, 3708–3718. doi: 10.1074/jbc.RA119.012256
- Korasick, D. A., Owuocha, L. F., Kandoth, P. K., Tanner, J. J., Mitchum, M. G., and Beamer, L. J. (2024). Structural and functional analysis of two SHMT8 variants associated with soybean cyst nematode resistance. *FEBS J.* 291, 323–337. doi: 10.1111/febs.16971
- Li, Z., Wang, M., Bai, H., Wang, H., Han, J., An, L., et al. (2024). Serine hydroxymethyl transferase is a binding target of caprylic acid: Uncovering a novel molecular target for a herbicide and for producing caprylic acid-tolerant crops. *eLife* 13, RP94853. doi: 10.7554/eLife.94853.1
- Liebschner, D., Afonine, P. V., Moriarty, N. W., Poon, B. K., Sobolev, O. V., Terwilliger, T. C., et al. (2017). Polder maps: Improving OMIT maps by excluding bulk solvent. *Acta Crystallographica Section D: Struct. Biol.* 73, 148–157. doi: 10.1107/S2059798316018210
- Liu, S., Kandoth, P. K., Lakhssassi, N., Kang, J., Colantonio, V., Heinz, R., et al. (2017). The soybean GmSNAP18 gene underlies two types of resistance to soybean cyst nematode. *Nat. Commun.* 8, 1–11. doi: 10.1038/ncomms14822
- Liu, S., Kandoth, P. K., Warren, S. D., Yeckel, G., Heinz, R., Alden, J., et al. (2012). A soybean cyst nematode resistance gene points to a new mechanism of plant resistance to pathogens. *Nature* 492, 256–260. doi: 10.1038/nature11651
- Maenpuen, S., Mee-udorn, P., Pinthong, C., Athipornchai, A., Phiwaok, K., Watchasit, S., et al. (2023). Mangiferin is a new potential antimicrobial and anticancer drug for targeting serine hydroxymethyltransferase. *Arch. Biochem. Biophys.* 745, 109712. doi: 10.1016/j.abb.2023.109712
- Makino, Y., Oe, C., Iwama, K., Suzuki, S., Nishiyama, A., Hasegawa, K., et al. (2022). Serine hydroxymethyltransferase as a potential target of antibacterial agents acting synergistically with one-carbon metabolism-related inhibitors. *Commun. Biol.* 5, 619. doi: 10.1038/s42003-022-03555-x
- Matthews, R. G., Ross, J., Baugh, C. M., Cook, J. D., and Davis, L. (1982). Interactions of pig liver serine hydroxymethyltransferase with methyltetrahydropteroylpolylglutamate

- inhibitors and with tetrahydropteroylpolyglutamate substrates. *Biochemistry* 21, 1230–1238. doi: 10.1021/bi00535a019
- McGuire, J. J., and Bertino, J. R. (1981). Enzymatic synthesis and function of folypolyglutamates. *Mol. Cell. Biol.* 38, 19–48. doi: 10.1007/BF00235686
- Mehrshahi, P., Gonzalez-jorge, S., Akhtar, T. A., Ward, J. L., Santoyo-castelazo, A., Susan, E., et al. (2010). Functional analysis of folate polyglutamylation and its essential role in plant metabolism and development. *Plant J.* 64, 267–279. doi: 10.1111/tpj.2010.64.issue-2
- Meng, E. C., Goddard, T. D., Pettersen, E. F., Couch, G. S., Pearson, Z. J., Morris, J. H., et al. (2023). UCSF CHIMERA X: Tools for structure building and analysis. *Protein Sci.* 32, e4792. doi: 10.1002/pro.4792
- Orsomando, G., de la Garza, R. D., Green, B. J., Peng, M., Rea, P. A., Ryan, T. J., et al. (2005). Plant γ -glutamyl hydrolases and folate polyglutamates. *J. Biol. Chem.* 280, 28877–28884. doi: 10.1074/jbc.M504306200
- Rebeille, F., Neuburger, M., and Douce, R. (1994). Interaction between glycine decarboxylase, serine hydroxymethyltransferase and tetrahydrofolate polyglutamates in pea leaf mitochondria. *Biochem. J.* 302, 223–228. doi: 10.1042/bj3020223
- Ruszkowski, M., Sekula, B., Ruszkowska, A., Contestabile, R., Nogues, I., Sebastiana, A., et al. (2019). Structural basis of methotrexate and pemetrexed action on serine hydroxymethyltransferases revealed using plant models. *Sci. Rep.* 9, 19614. doi: 10.1038/s41598-019-56043-4
- Ruszkowski, M., Sekula, B., Ruszkowska, A., and Dauter, Z. (2018). Chloroplastic serine hydroxymethyltransferase from *Medicago truncatula*: A structural characterization. *Front. Plant Sci.* 9. doi: 10.3389/fpls.2018.00584
- Scarsdale, J. N., Radaev, S., Kazanina, G., Schirch, V., and Wright, H. T. (2000). Crystal structure at 2.4 Å resolution of *E. coli* serine hydroxymethyltransferase in complex with glycine substrate and 5-formyl tetrahydrofolate. *J. Mol. Biol.* 296, 155–168. doi: 10.1006/jmbi.1999.3453
- Schirch, L., and Ropp, M. (1967). Serine transhydroxymethylase. Affinity of tetrahydrofolate compounds for the enzyme and enzyme-glycine complex. *Biochemistry* 6, 253–257. doi: 10.1021/bi00853a039
- Schirch, V., and Strong, W. B. (1989). Interaction of folypolyglutamates with enzymes in one-carbon metabolism. *Arch. Biochem. Biophys.* 2, 371–380. doi: 10.1016/0003-9861(89)90120-3
- Schwartz, G., Witschel, M. C., Rottmann, M., Bonnert, R., Leartsakulpanich, U., Chitnumsub, P., et al. (2017). Antimalarial inhibitors targeting serine hydroxymethyltransferase (SHMT) with *in vivo* efficacy and analysis of their binding mode based on X-ray cocrystal structures. *J. Medicinal Chem.* 60, 4840–4860. doi: 10.1021/acs.jmedchem.7b00008
- Schwartz, G., Witschel, M. C., Rottmann, M., Leartsakulpanich, U., Chitnumsub, P., Jaruwat, A., et al. (2018). Potent inhibitors of plasmodial serine hydroxymethyltransferase (SHMT) featuring a spirocyclic scaffold. *ChemMedChem* 13, 931–943. doi: 10.1002/cmde.201800053
- Situ, Y., Zhang, J., Liao, W., Liang, Q., Lu, L., Xu, Q., et al. (2023). SHMT as a potential therapeutic target for renal cell carcinoma. *Front. Biosci. (Landmark Ed)* 28, 196. doi: 10.31083/j.fbl2809196
- Strong, W. B., Cook, R., and Schirch, V. (1989). Interaction of tetrahydropteroylpolyglutamates with two enzymes from mitochondria. *Serine Hydroxymethyltransferase Biochem.* 28, 106–114. doi: 10.1021/bi00427a016
- Strong, W. B., and Schirch, V. (1989). *In vitro* conversion of formate to serine: effect of tetrahydropteroylpolyglutamates and serine hydroxymethyltransferase on the rate of 10-formyltetrahydrofolate synthetase. *Biochemistry* 28, 9430–9439. doi: 10.1021/bi00450a028
- Wei, Z., Sun, K., Sandoval, F. J., Cross, J. M., Gordon, C., Kang, C., et al. (2013). Folate polyglutamylation eliminates dependence of activity on enzyme concentration in mitochondrial serine hydroxymethyltransferases from *Arabidopsis thaliana*. *Arch. Biochem. Biophys.* 536, 87–96. doi: 10.1016/j.abb.2013.06.004
- Winn, M. D., Ballard, C. C., Cowtan, K. D., Dodson, E. J., Emsley, P., Evans, P. R., et al. (2011). Overview of the CCP4 suite and current developments. *Acta Crystallographica Section D: Biol. Crystallogr.* 67, 235–242. doi: 10.1107/S0907444910045749
- Witschel, M. C., Rottmann, M., Schwab, A., Leartsakulpanich, U., Chitnumsub, P., Seet, M., et al. (2015). Inhibitors of plasmodial serine hydroxymethyltransferase (SHMT): Cocrystal structures of pyrazolopyrans with potent blood- and liver-stage activities. *J. Medicinal Chem.* 58, 3117–3130. doi: 10.1021/jm501987h
- Zarou, M. M., Vazquez, A., and Vignir Helgason, G. (2021). Folate metabolism: a re-emerging therapeutic target in hematological cancers. *Leukemia* 35, 1539–1551. doi: 10.1038/s41375-021-01189-2
- Zhou, H.-R., Zhang, F.-F., Ma, Z.-Y., Huang, H.-W., Jiang, L., Cai, T., et al. (2013). Folate polyglutamylation is involved in chromatin silencing by maintaining global DNA methylation and histone H3K9 dimethylation in *Arabidopsis*. *Plant Cell* 25, 2545–2559. doi: 10.1105/tpc.113.114678